

# PURDUE — FORT WAYNE —

## PURDUE FORT WAYNE RECORD

OVERALL: 6-20	LOSS-6
SUMMIT LEAGUE: 2-12	LOSS-6
NON-LEAGUE: 4-8	LOSS-1
HOME: 5-7	LOSS-2
AWAY: 1-13	LOSS-10
NEUTRAL: 0-0	LOSS-1

## 2018-19 SCHEDULE

### NOVEMBER (3-5)

6	IU KOKOMO	W, 87-50
8	at Western Michigan	L, 69-61
12	TAYLOR	W, 84-74
15	at Eastern Illinois	L, 72-63
18	at Purdue	L, 78-44
20	at Evansville	W, 72-66
24	SIUE	L, 57-49
29	at Loyola-Chicago	L, 81-67

### DECEMBER (1-5)

1	at Milwaukee	L, 70-48
8	Eastern Michigan	L, 87-72
16	Goshen	W, 86-45
19	Valparaiso	L, 68-64
28	at North Dakota State	L, 70-54
30	at North Dakota	L, 79-60

### JANUARY (2-5)

3	SOUTH DAKOTA STATE	L, 85-52
9	ORAL ROBERTS	L, 72-61
12	at South Dakota	L, 69-51
19	at Western Illinois	L, 73-59
24	OMAHA	W, 56-48
26	DENVER	W, 70-55
30	at Oral Roberts	L, 66-56

### FEBRUARY (0-5)

2	SOUTH DAKOTA	L, 71-49
6	WESTERN ILLINOIS	L, 90-61
13	at Denver	L, 82-62
16	at Omaha	L, 70-61
20	at South Dakota State	L, 92-68
28	NORTH DAKOTA	5 P.M.

### MARCH (0-0)

2	NORTH DAKOTA STATE	2 P.M.
SUMMIT LEAGUE TOURNAMENT (Mar. 8-11)		
8-9	Quarterfinals	TBD
10	Semifinals	TBD
11	Championship	TBD

• Summit League Matches

CAPS/BOLD = Home Matches | All Times Eastern

## PURDUE FORT WAYNE REFERENCES

As a part of university changes beginning July 1, 2018, we respectfully ask to refer to any athletic-related subjects as "Purdue Fort Wayne" or the "Purdue Fort Wayne Mastodons." **PLEASE DO NOT IN ANY CONTEXT** refer to any team as "IPFW" or "Indiana University - Purdue University Fort Wayne" as it **no longer exists**. Please **do not** use "Lady 'Dons" when referring to women's teams.



# WOMEN'S BASKETBALL

## PURDUE FORT WAYNE MASTODONS

6-20, 2-12 SUMMIT LEAGUE

VS

## NORTH DAKOTA FIGHTING HAWKS

10-17, 5-9 SUMMIT LEAGUE



### LAST GAME:

L, 92-68 at South Dakota State (Feb. 20)

### COACH:

Niecee Nelson | 3rd Season

### SCORING LEADER:

De'Jour Young | 12.5 ppg

### REBOUNDING LEADER:

Sh'Toya Sanders | 7.0 rpg

### ASSIST LEADER:

Anna Lappenküper | 2.5 apg

### STEAL LEADER:

Anna Lappenküper | 1.5 spg

### BLOCK LEADER:

Sh'Toya Sanders | 1.6 bpg

### TALE OF THE TAPE

CATEGORY	'DONS	UND
POINTS SCORED	62.2	65.4
POINTS ALLOWED	70.7	72.8
FG PCT.	.404	.394
OPP. FG PCT.	.428	.426
3-POINT PCT.	.317	.258
OPP. 3-POINT PCT.	.334	.361
FREE THROW PCT.	.667	.713
REBOUNDS	34.1	38.6
REBOUND MARGIN	-2.1	+3.9
ASSISTS	10.8	12.3
TURNOVERS	17.1	17.9
STEALS	6.8	6.5
BLOCKED SHOTS	4.3	3.8

### LAST GAME:

L, 92-91 (OT) vs Denver (Feb. 23)

### COACH:

Travis Brewster | 7th Season

### SCORING LEADER:

Lexi Klabo | 19.1 ppg

### REBOUNDING LEADER:

Lexi Klabo | 8.4 rpg

### ASSIST LEADER:

Alaina Jarnot | 2.8 apg

### STEAL LEADER:

Jill Morton | 1.3 spg

### BLOCK LEADER:

Lexi Klabo | 1.6 bpg

## GAMEDAY INFORMATION

WHEN: February 28 | 5 p.m.

WHERE: Fort Wayne, Ind. | Gates Sports Center (1,800)

LIVE STATS: Purdue Fort Wayne Live Stats

LIVE AUDIO: Purdue Fort Wayne Broadcast

LIVE VIDEO: Purdue Fort Wayne Broadcast

SERIES HISTORY: North Dakota leads 2-0

LAST MEETING: North Dakota 79, Purdue Fort Wayne 60 | January 3, 2019 | Fort Wayne, Ind.

## MASTODON PROBABLE STARTERS (SUBJECT TO CHANGE)



**Jaelencia Williams** 6-2 So.

Indianapolis, Ind. / Southport

GP	GS	PPG	RPG	Ast	FG%	3FG%	FT%
26	7	8.8	5.08	8	.494	.000	.538



**Hannah Albrecht** 5-7 Jr.

Crown Point, Ind. / Crown Point H.S. / Saint Joseph's (IN)

GP	GS	PPG	RPG	Ast	FG%	3FG%	FT%
26	25	8.2	2.58	40	.386	.361	.821



**Anna Lappenküper** 5-8 Jr.

Herne, Germany / Otto Hahn Gymnasium

GP	GS	PPG	RPG	Ast	FG%	3FG%	FT%
26	26	5.3	2.42	66	.358	.290	.636



**De'Jour Young** 5-7 Sr.

Fort Wayne, Ind. / Concordia Lutheran

GP	GS	PPG	RPG	Ast	FG%	3FG%	FT%
26	26	12.5	6.42	55	.438	.341	.698



**Kierstyn Repp** 5-10 So.

Archbold, Ohio / Archbold

GP	GS	PPG	RPG	Ast	FG%	3FG%	FT%
26	23	9.7	2.19	22	.359	.335	.875

[GoMastodons.com/WBBstats](http://GoMastodons.com/WBBstats)



@MastodonWBB

@GoMastodons

#GoDons

## 2018-19 SUMMIT LEAGUE STANDINGS

(as of 2/24/2019)

Team	Summit				Overall					
	Rec.	Pct.	PF	PA	Rec.	Pct.	PF	PA	Last 10	Strk.
South Dakota State	14-1	0.933	1235	905	22-6	0.786	2204	1762	10-0	Won 12
South Dakota	12-2	0.857	1126	861	24-4	0.857	2163	1646	9-1	Lost 1
Oral Roberts	9-6	0.600	1088	1033	16-12	0.571	2018	1910	6-4	Won 3
Denver	8-6	0.571	1104	1046	15-12	0.556	2176	2043	5-5	Won 1
Western Illinois	8-6	0.571	1095	1071	12-15	0.444	2054	2090	7-3	Lost 2
North Dakota	5-9	0.357	959	1068	10-17	0.370	1765	1966	2-8	Lost 3
North Dakota State	4-10	0.286	820	1024	7-19	0.269	1504	1825	2-8	Won 1
Omaha	2-12	0.143	797	1014	8-19	0.296	1593	1778	2-8	Lost 1
Purdue Fort Wayne	2-12	0.143	820	1022	6-20	0.231	1617	1839	2-8	Lost 6

## 2018-19 SUMMIT LEAGUE PLAYERS OF THE WEEK

Date	Player	Pos.	School	Feb. 12	Lexi Klabo	F	North Dakota
Nov. 12	Taylor Frederick	F	South Dakota	Feb. 18	Tagyn Larson	F	South Dakota State
Nov. 19	Macy Miller	G	South Dakota State	Feb. 25	Macy Miller	G	South Dakota State
Nov. 26	Madison Nelson	F	Denver	Mar. 5			
Dec. 3	Lexi Klabo	F	North Dakota				
Dec. 10	Hannah Sjerven	C	South Dakota				
Dec. 17	Ciara Duffy	G	South Dakota				
Dec. 22	Taylor Higginbotham	G	Western Illinois				
Dec. 31	Lexi Klabo	F	North Dakota				
Jan. 7	Lauren Loven	G	Denver				
Jan. 15	Myah Selland	F	South Dakota State				
Jan. 21	Olivia Kaufmann	G	Western Illinois				
Jan. 28	<i>De'Jour Young</i>	<i>G</i>	<i>Purdue Fort Wayne</i>				
	Keni Jo Lippe	G	Oral Roberts				
Feb. 4	Taylor Higginbotham	G	Western Illinois				

## SUMMIT LEAGUE COMPOSITE SCHEDULE

### Saturday, January 5

Western Illinois 64, Oral Roberts 68  
North Dakota 66, Denver 87

### Sunday, January 6

South Dakota State 98, South Dakota 105  
North Dakota State 61, Omaha 78

### Wednesday, January 9

Denver 59, South Dakota State 76  
Omaha 57, North Dakota 68

### Friday, January 11

Western Illinois 60, North Dakota State 68

### Saturday, January 12

Oral Roberts 55, South Dakota State 68

### Sunday, January 13

Western Illinois 92, North Dakota 80

### Wednesday, January 16

Omaha 70, Western Illinois 78

### Thursday, January 17

North Dakota State 54, Denver 81

### Friday, January 18

South Dakota State 66, North Dakota 48  
South Dakota 76, Oral Roberts 72

### Sunday, January 20

North Dakota 57, North Dakota State 69  
Oral Roberts 76, Denver 93  
South Dakota 80, Omaha 49

### Wednesday, January 23

North Dakota State at South Dakota State

### Thursday, January 24

South Dakota at North Dakota

### Saturday, January 26

Western Illinois 49, South Dakota 92  
North Dakota State 72, Oral Roberts 101  
Omaha 47, South Dakota State 81

### Wednesday, January 30

Peru State 44, Omaha 91

### Thursday, January 31

South Dakota State 83, Denver 67

### Friday, February 1

North Dakota 90, Western Illinois 111

### Saturday, February 2

South Dakota State 74, Oral Roberts 65

### Sunday, February 3

North Dakota State 70, Western Illinois 82  
North Dakota 69, Omaha 68

### Wednesday, February 6

Denver 66, Oral Roberts 74  
Omaha 33, South Dakota 78

### Thursday, February 7

North Dakota State 58, North Dakota 70

### Saturday, February 9

Denver 87, North Dakota State 67  
Oral Roberts 64, South Dakota 75  
North Dakota 58, South Dakota State 81  
Western Illinois 79, Omaha 67

### Wednesday, February 13

Oral Roberts 65, North Dakota State 54  
South Dakota State 82, Omaha 38

### Saturday, February 16

South Dakota State 88, North Dakota State 48  
Oral Roberts 80, North Dakota 58  
South Dakota 83, Western Illinois 61

### Thursday, February 21

Denver 58, South Dakota 73

### Saturday, February 23

Denver 92, North Dakota 91  
Omaha 48, North Dakota State 55  
Oral Roberts 92, Western Illinois 85

### Sunday, February 24

South Dakota 78, South Dakota State 82

### Thursday, February 28

Western Illinois at Denver 2 P.M.  
Omaha at Oral Roberts 6 P.M.  
North Dakota State at South Dakota 6:30 P.M.

### Saturday, March 2

North Dakota at South Dakota 2 P.M.  
Western Illinois at South Dakota State 3 P.M.  
Omaha at Denver 8 P.M.

## PURDUE FORT WAYNE AT A GLANCE

### GENERAL INFO

Address	2101 E. Coliseum Blvd.
City/Zip	Fort Wayne, IN / 46805
Founded	1964
Enrollment	10,414
Nickname	Mastodons
Colors	Gold and Black
Affiliation	NCAA Division I
Conference	The Summit League
Chancellor	Dr. Ron Elsenbaumer
Athletic Director	Kelley Hartley Hutton

### MEDIA SERVICES

Asst. Director / WBB Contact	Brian Alden
E-mail	aldenbs@pfw.edu
Office Phone	(260) 481-6646
Cell Phone	(859) 468-8963
Office Fax	(260) 481-6002

### COACHING STAFF

Head Coach	Niecee Nelson
Alma Mater 'Yr.	Concordia Portland '02
Record at School/Yrs.	15-68 / 3rd
Career Record/Yrs.	Same
Assistant Coach	Marcie Alberts (6th season)
Alma Mater 'Yr.	Ohio State '97
Assistant Coach	Haley Seibert (4th season)
Alma Mater 'Yr.	IPFW '15
Assistant Coach	Akilah Sims (1st season)
Alma Mater 'Yr.	IUPUI '16

### SEASON IN REVIEW

2017-18 Overall Record	4-24
2017-18 Summit Record/Finish	1-13 / 8th
Letterwinners Returning/Lost	7 / 5
Starters Returning/Lost	4 / 1
Newcomers	5

### HISTORY

First Year of Varsity Basketball	1976-77
First Year of NCAA Division I Basketball	2001-02
First Year in The Summit League	2007-08
All-Time Record	471-672
All-Time Division I Record	167-355
All-Time Summit League Record	73-124
All-time NCAA Tournament Record	0-3
Last NCAA Appearance	3/7/1996
Result	L, 71-79 vs. Lake Superior State
Years in Post-Season play	12
Last Post-Season Game	3/19/2014 (WBI)
Result	L, 84-71 at UIC

First Varsity Game	12/9/76 at Huntington; L, 41-38
500th Game	1/9/97 at Saint Joseph's (IN); W, 73-61
750th Game	1/25/06 vs. Butler; L, 70-60
1,000th Game	3/19/14 at UIC; L, 84-71

First Program Victory	12/11/76 vs. Grace; W, 72-31
250th Program Victory	2/10/96 at Kentucky Wesleyan; W, 91-76

### Conference/Membership Affiliations

AIAW Independent	1976-77 to 1981-82
NCAA D-III Independent	1982-83 to 1983-84
NCAA D-II Great Lakes Valley Conference	1984-85 to 2000-01
NCAA D-I Independent	2001-02 to 2006-07
NCAA D-I The Summit League	2007-08 to present



# PURDUE FORT WAYNE MASTODONS ROSTER

No.	Name	Ht.	Pos.	Cl.	Hometown	High School / Previous School
00	Jaelencia Williams ( <i>JUH-len-see-uh</i> )	6-2	C	So.	Indianapolis, Ind.	Southport
3	Sierra Bell	5-7	G	Jr.	Danville, Ill.	Schlarman Academy / Northeast Community College
4	Ellie Dykstra	6-1	F	Fr.	Byron Center Mich.	Byron Center
5	Hannah Hess	5-10	G	R-So.	Oregon, Ohio	Clay
10	Hannah Albrecht	5-7	G	Jr.	Crown Point, Ind.	Crown Point / Saint Joseph's (IN)
12	Anna Lappenküper ( <i>AHH-nuh LAH-pen-cooper</i> )	5-8	G	Jr.	Herne, Germany	Otto Hahn Gymnasium
13	De'Jour Young ( <i>D-zhur</i> )	5-7	G	Sr.	Fort Wayne, Ind.	Concordia Lutheran
14	Sh'Toya Sanders ( <i>SHUH-toy-yuh</i> )	6-0	F	R-Jr.	Fort Wayne, Ind.	Wayne / Chicago State
15	Cam Douglas	5-11	F	Fr.	San Deigo, Calif.	Mount Miguel
23	Amaya Johns ( <i>UH-my-yuh</i> )	5-9	G	Fr.	Plainfield, Ill.	Oswego East
31	Sofia Rajala ( <i>RUH-jah-Luh</i> )	6-0	F	So.	Helsinki, Finland	Mäkelänrinne Sports
32	Kierstyn Repp ( <i>Rep</i> )	5-10	G	So.	Archbold, Ohio	Archbold

**Head Coach:** Niecee Nelson (*KNEE-see*)  
**Assistant Coaches:** Marcie Alberts, Haley Seibert (*sigh-BERT*) and Akilah Sims  
**Graduate Manager:** Kendall Festervand

# NORTH DAKOTA FIGHTING HAWKS ROSTER

No.	Name	Pos.	Ht.	Cl.	Hometown	Previous School
1	Jaclyn Jarnot ( <i>JAR-nott</i> )	F	6-1	Fr.	Brooklyn Park, Minn.	Maranatha Christian Academy
3	Melissa Dailey	G	5-8	Sr.	Portland, Ore.	College of the Siskiyous
4	Jill Morton	G	5-9	Sr.	Edina, Minn.	Edina High School
5	Melissa Leet	C	6-5	So.	Portage, Wis.	Portage
10	Claire Orth	G	5-10	Fr.	Circle Pines, Minn.	Centennial
12	Alaina Jarnot	G	5-7	Jr.	Brooklyn Park, Minn.	Monmouth
15	Faith Dooley	C	6-3	Sr.	Wheatland, N.D.	Central Cass
20	Mikayla Reinke ( <i>REN-key</i> )	G	5-9	So.	Kindred, N.D.	Kindred
21	Megan Dailey	G	5-8	Sr.	Portland, Ore.	College of the Siskiyous
22	Bailey Strand	G	5-10	Sr.	Fergus Falls, Minn.	Kennedy Secondary
24	Julia Fleecs ( <i>Fleece</i> )	F	6-2	So.	Glidden, Iowa	Glidden-Ralston
31	Rachel Garvey	G	5-7	Fr.	Shakopee, Minn.	Shakopee
34	Lexi Klabo ( <i>CLAY-bo</i> )	F	6-2	Sr.	Fargo, N.D.	Davies
35	Tiahna Nicholson	F	6-2	Fr.	Thief River Falls, Minn.	Thief River Falls
54	Juliet Gordon	G	5-11	Fr.	Adelaide, South Australia	

**Head Coach:** Travis Brewster  
**Assistant Coaches:** Mallory Bernhard, John Motherwell and Emily Evers (*EE-vurrs*)

## All-Time Results vs. North Dakota

12/04/1996	A	#2 North Dakota	L, 51-81	Grand Forks, N.D.
12/30/2018	A	North Dakota	L, 60-79	Grand Forks, N.D.

**Overall:** 0-2  
**League:** 0-1  
**Home:** 0-0  
**Away:** 0-2  
**Neutral:** 0-0

# Mastodons vs.

18-19 OPPONENTS	All-Time	Under Nelson
Denver	4-9	1-5
Eastern Illinois	2-4	1-1
Eastern Michigan	0-2	0-1
Evansville	2-1	1-0
Goshen	4-6	1-0
IU Kokomo	1-0	1-0
Loyola-Chicago	1-2	1-1
Milwaukee	2-5	0-2
North Dakota	0-2	0-1
North Dakota State	9-19	1-4
Omaha	7-7	3-3
Oral Roberts	5-16	0-6
Purdue	0-6	0-1
SIUE	9-11	0-1
South Dakota	3-14	0-6
South Dakota State	1-33	0-6
Taylor	7-4	1-0
Valparaiso	5-11	0-1
Western Illinois	10-15	0-6
Western Michigan	1-5	0-2
<b>TOTALS</b>	<b>73-172</b>	<b>11-47</b>

# ON THIS DATE...

## FEBRUARY 28 (4-6)

2015	at Oral Roberts	L 56-84
2013	at Western Illinois	L, 54-73
2011	at Southern Utah	W, 90-68
2009	SOUTHERN UTAH	W, 64-56
2004	at Valparaiso	L, 65-80
1991	at Indianapolis	L, 65-85
1989	WAYNE STATE (MI)	W, 78-66
1987	#7 NORTHERN KENTUCKY	L, 66-97
1985	KENTUCKY WESLEYAN	W, 76-69
1981	SAINT MARY'S (IN)	L, 44-53

# ALL-TIME IN FEBRUARY...

## BY DAY AND LOCATION

Sunday	1-7
Monday	9-15
Tuesday	13-9
Wednesday	10-13
Thursday	38-54
Friday	3-4
Saturday	66-77
Home	85-66
Away	52-111
Neutral	3-2

# ALL-TIME RECORD...

## BY DAY OF THE WEEK

Sunday	16-46
Monday	37-53
Tuesday	48-61
Wednesday	37-58
Thursday	105-134
Friday	33-55
Saturday	191-260

# ALL-TIME RECORD...

## BY MONTH

November	65-94
December	112-152
January	137-216
February	140-180
March	17-30

# Mastodons vs.

SUMMIT LEAGUE	All-Time	Under Nelson
Denver	4-9	1-5
North Dakota	0-2	0-1
North Dakota State	9-19	1-4
Omaha	7-7	3-3
Oral Roberts	5-16	0-6
South Dakota	3-14	0-6
South Dakota State	1-33	0-6
Western Illinois	10-15	0-6
<b>TOTALS</b>	<b>39-115</b>	<b>29-56</b>

## HEAD COACH NIECEE NELSON

Niecee Nelson was appointed as Fort Wayne's women's basketball head coach on April 18, 2016. An assistant coach at the University of San Diego for 11 seasons, she is the 14th head coach in the 40-year history of the program. Nelson is no stranger to Fort Wayne, however, having served as an assistant coach for the Mastodons for one season during 2004-05, after getting her start in coaching as a graduate assistant at the University of Wyoming for two seasons (2002-04).

Nelson helped lead San Diego to an overall record of 222-124 since 2005, including five consecutive 20-win seasons and postseason WNIT appearances. The Toreros, under the direction of head coach Cindy Fisher, made one NCAA Tournament appearance since '05, winning the WCC Tournament in 2008, and have made six overall appearances in the WNIT, first advancing to the event in 2007. USD was 25-8 in 2015-16, tying for the second-most wins in program history while advancing to the third round of the WNIT.

Nelson's on court responsibilities at USD included point guard and shooting guard development, while serving as the program's offensive coordinator. She has helped develop 13 All-WCC First Team guards, including Dominique Conners, a three-time honoree and USD's all-time leader in points and steals. Nelson also helped develop Amanda Rego, the program's only WCC Player of the Year (2006-07), who was the national assist leader that season, and is the school's career leader in assists.

Nelson's off court responsibilities at USD included serving as the program's academic coordinator, budget management and ordering of team equipment, including uniforms and apparel, as well as managing team travel. Additionally, she shared in the duties of recruiting as well as the opponent scouting and game strategy. Nelson has also assisted in creating practice plans and individual workouts.

Nelson was an assistant at Fort Wayne during 2004-05, with primary responsibilities in team travel, post player development, marketing and academic support. Within two months of arriving at Fort Wayne, she was promoted to recruiting coordinator, leading the charge in overseas recruiting into Brazil and Europe.

Prior to Fort Wayne, Nelson served as a graduate assistant at Wyoming with Coach Fisher. She worked closely with the staff and team on practice and game day coaching, individual workouts, academic support, film exchange, and guard and post development.

Nelson earned 2001 NAIA All-America honors at Concordia University in Portland, Oregon. A two-time team captain, she was named to the 2001 Lutheran Brotherhood All-America Team. Nelson was a two-time All-Cascade Conference First Team selection (2001, 2002), and the 1998 Cascade Conference Freshman of the Year.

Nelson graduated from Concordia in 2002 with a Bachelor of Arts degree in Education with an emphasis in Elementary Education, adding minors in Business Marketing and Psychology. She earned a Master of Science degree in Kinesiology and Health with an emphasis in Health Promotion from Wyoming in 2004.

Niecee and her husband, Steve, have two children: son Sebastian and daughter Skyler.

## PURDUE FORT WAYNE IN SUMMIT LEAGUE AND NCAA STATISTICS

TEAM	Statistic	(of 349) NCAA	(of 9) Summit
Assist Turnover Ratio	0.63	300	9
Assists	280	309	9
Assists Per Game	10.8	314	9
Blocked Shots	111	62	2
Blocked Shots Per Game	4.3	57	2
Fewest Fouls	475	217	5
Fewest Turnovers	444	231	8
Field-Goal Percentage	40.4	161	6
Field-Goal Percentage Defense	42.8	299	7
Free Throw Attempts	418	238	7
Free Throws Made	279	255	8
Free-Throw Percentage	66.7	248	9
Personal Fouls Per Game	18.3	237	5
Rebound Margin	-2.1	243	6
Rebounds	890	293	8
Rebounds Per Game	34.23	303	7
Scoring Defense	70.7	299	6
Scoring Margin	-8.5	296	8
Scoring Offense	62.2	236	7
Steals	176	256	7
Steals Per Game	6.8	253	7
Three Pt FG Defense	33.4	284	5
Three-Point Field Goals Made	160	156	6
Three-Point Field Goals Per Game	6.2	156	6
Three-Point Field-Goal Percent	31.7	152	6
Turnover Margin	-3.77	321	8
Turnovers Forced	13.31	318	8
Turnovers Per Game	17.1	235	8

## INDIVIDUAL

	Statistic	NCAA	Summit
<b>Blocked Shots</b>			
Jaelencia Williams	38	94	4
Sh'Toya Sanders	36	107	5
<b>Blocked Shots Per Game</b>			
Sh'Toya Sanders	1.57	78	3
Jaelencia Williams	1.46	95	4
<b>Rebounds Per Game</b>			
Sh'Toya Sanders	7	245	5
<b>Three-Point Field Goals Attempted</b>			
Kierstyn Repp	182	73	4
<b>Three-Point Field Goals Made</b>			
Kierstyn Repp	61	90	5
<b>Three-Point Field Goals Per Game</b>			
Kierstyn Repp	2.35	99	5
<b>Three-Point Field-Goal Percentage</b>			
Kierstyn Repp	33.5	152	8

As of 2/24

Does not include teams reclassifying

## Season and Career Totals 2018-19 Career

### DOUBLE-DOUBLES

De'Jour Young	3	7
Sh'Toya Sanders	2	2
Jaelencia Williams	1	1

### 20-PLUS POINT GAMES

De'Jour Young	4	8
Kierstyn Repp	1	2
Jaelencia Williams	2	2
Hannah Albrecht	1	2
Anna Lappenküper	1	1

### DOUBLE-DIGIT SCORING GAMES

De'Jour Young	19	58
Anna Lappenküper	4	22
Kierstyn Repp	11	21
Jaelencia Williams	8	19
Hannah Albrecht	8	15
Sh'Toya Sanders	11	11
Hannah Hess	3	5
Sierra Bell	2	2

### 10-PLUS REBOUND GAMES

De'Jour Young	3	9
Sh'Toya Sanders	4	4
Jaelencia Williams	1	2

### 5-PLUS ASSIST GAMES

Anna Lappenküper	3	7
De'Jour Young	-	3
Sierra Bell	3	3
Hannah Hess	1	1
Hannah Albrecht	1	1

### 3-PLUS STEAL GAMES

De'Jour Young	4	14
Anna Lappenküper	6	10
Hannah Albrecht	-	3
Sh'Toya Sanders	2	2
Sierra Bell	1	1
Hannah Hess	1	1
Kierstyn Repp	2	2

### 3-PLUS THREE-POINT FG GAMES

Kierstyn Repp	13	23
Anna Lappenküper	2	5
Hannah Hess	3	5
Hannah Albrecht	3	5
De'Jour Young	2	2

### STARTS

De'Jour Young	26	100
Anna Lappenküper	26	75
Hannah Albrecht	25	51
Kierstyn Repp	23	38
Jaelencia Williams	7	22
Sh'Toya Sanders	19	19
Hannah Hess	3	5
Sofia Rajala	-	1
Ellie Dykstra	1	1

### 5-5-5 GAMES

At least 5 in three categories (pts, rbs, ast, stl or blk)		
De'Jour Young	1	4
Sierra Bell	3	3
Jaelencia Williams	1	1
Sh'Toya Sanders	1	1



## Single Game Stat Leaders 2018-19 Career

### TEAM LEADER IN POINTS

De'Jour Young	9	33
Jaelencia Williams	4	11
Kierstyn Repp	4	8
Anna Lappenküper	2	6
Hannah Albrecht	4	6
Sh'Toya Sanders	2	2
Sierra Bell	1	1

### TEAM LEADER IN REBOUNDS

De'Jour Young	8	43
Jaelencia Williams	6	19
Sh'Toya Sanders	13	13
Sierra Bell	2	2
Anna Lappenküper	-	1
Hannah Albrecht	-	1
Kierstyn Repp	-	1

### TEAM LEADER IN ASSISTS

De'Jour Young	7	27
Anna Lappenküper	12	25
Hannah Albrecht	4	15
Sierra Bell	6	6
Hannah Hess	1	2
Jaelencia Williams	1	2
Kierstyn Repp	-	1

### TEAM LEADER IN STEALS

De'Jour Young	8	36
Anna Lappenküper	9	20
Hannah Albrecht	2	9
Hannah Hess	4	9
Sh'Toya Sanders	9	9
Kierstyn Repp	5	8
Jaelencia Williams	-	3
Sierra Bell	4	4
Ellie Dykstra	1	1

### TEAM LEADER IN BLOCKS

Jaelencia Williams	13	29
De'Jour Young	1	21
Sh'Toya Sanders	14	14
Anna Lappenküper	3	6
Kierstyn Repp	2	4
Hannah Hess	-	1
Hannah Albrecht	-	1
Sierra Bell	1	1
Ellie Dykstra	1	1

### POINTS OFF THE BENCH

Jaelencia Williams	14	20
Hannah Hess	6	11
Sierra Bell	8	8
Kierstyn Repp	1	6
De'Jour Young	-	4
Anna Lappenküper	-	3
Sh'Toya Sanders	2	2
Hannah Albrecht	1	1
Ellie Dykstra	1	1
Sh'Toya Sanders	1	1

## Miscellaneous Game Stats

### SCORES FIRST

Fort Wayne	15
Opponents	11

### HOW MASTODONS SCORED FIRST POINT

Free Throw	5
Jumper	9
Layup	4
Three-Pointer	8

### FIRST MASTODON POINT SCORED BY

De'Jour Young	7
Kierstyn Repp	5
Jaelencia Williams	4
Sh'Toya Sanders	4
Hannah Albrecht	3
Anna Lappenküper	2
Sierra Bell	1

### SCORING RUNS OF 10-0 OR BETTER

Fort Wayne	8
Opponents	16

### TIP-OFFS CONTROLLED

Fort Wayne	17
Opponents	9

Sh'Toya Sanders	13/19	(.684)
Jaelencia Williams	4/6	(.666)
Ellie Dykstra	0/1	(.000)

### MASTODONS FIRST SUBSTITUTION

Jaelencia Williams	12
Hannah Hess	11
Sierra Bell	6
Sh'Toya Sanders	4
Kierstyn Repp	1

### PLAYERS FOULED OUT

Fort Wayne	11
Opponents	6

De'Jour Young	2	5
Kierstyn Repp	3	4
Anna Lappenküper	1	3
Sierra Bell	3	3
Hannah Albrecht	1	1
Sh'Toya Sanders	1	1

### THREE- AND FOUR-POINT PLAYS

Fort Wayne	23
Opponents	21

De'Jour Young	4	18
Jaelencia Williams	6	11
Anna Lappenküper	1	5
Sh'Toya Sanders	4	4
Hannah Albrecht	3	4
Sierra Bell	3	3
Hannah Hess	2	2

### BENCH POINTS

Purdue Fort Wayne	479 (18.4 ppg.)
Opponents	503 (19.3 ppg.)

### LARGEST HALFTIME LEAD

27 (48-21) vs Goshen (12/16/18)

### LARGEST HALFTIME DEFICIT

22 (39-17) at Purdue (11/18/18)

### LARGEST WIN

41 (86-45) vs Goshen (12/16/18)

### LARGEST DEFEAT

34 (78-44) at Purdue (11/18/18)

### LARGEST LEAD

45 (77-32, 8:33, 4th) vs Goshen (12/16/18)

### LARGEST DEFICIT

40 (77-37, 3:00, 4th) at Purdue (11/18/18)

### LARGEST DEFICIT OVERCOME TO WIN

5 (54-49, 1:32, 3rd) at Evansville (11/20/18)

### LARGEST LEAD GIVEN UP IN LOSS

8 (twice) MR - (16-8, 2:08, 1st) at Denver (2/13/19)

### MOST CONSECUTIVE POINTS

13, (9:39 - 6:36 1st) vs Goshen (12/16/18)

### MOST CONSECUTIVE POINTS BY OPP.

22 (9:30-1:29, 2nd) at Western Michigan (11/8/18)

### LONGEST WINNING STREAK

2 - 1/24/19 - 1/28/19

### LONGEST LOSING STREAK

7 - 12/19/18 - 1/19/19

### LARGEST HOME CROWD

1,536, vs Denver (1/26/19)

### LARGEST ROAD CROWD

5,970, at Purdue (11/20/18)

### MOST TIME LEADING

39:49, vs Denver (1/26/19)

### MOST TIME LEADING IN LOSS

15:59, at Omaha (2/16/19)

### MOST TIME WITH SCORE TIED

8:28, vs. South Dakota (2/2/19)

### MOST TIME TRAILING

39:47, at South Dakota State (2/20/19)

### MOST LEAD CHANGES

13, vs. Taylor (11/12/18)

### MOST TIE SCORES

9, vs. South Dakota (2/2/19)

## STARTING LINEUPS

Game	G	G	G	G/F	C/F
IU Kokomo	Lappenküper	Young	Albrecht	Repp	Sanders
Western Michigan	Lappenküper	Young	Albrecht	Repp	Sanders
Taylor	Lappenküper	Young	Albrecht	Repp	Sanders
Eastern Illinois	Lappenküper	Young	Albrecht	Repp	Sanders
Purdue	Lappenküper	Young	Hess	Sanders	Williams
Evansville	Lappenküper	Young	Albrecht	Repp	Sanders
SIUE	Lappenküper	Young	Albrecht	Repp	Sanders
Loyola-Chicago	Lappenküper	Young	Hess	Albrecht	Williams
Milwaukee	Lappenküper	Young	Hess	Albrecht	Dykstra
Eastern Michigan	Lappenküper	Young	Albrecht	Repp	Williams
Goshen	Lappenküper	Young	Albrecht	Repp	Williams
Valparaiso	Lappenküper	Young	Albrecht	Repp	Williams
North Dakota State	Lappenküper	Young	Albrecht	Repp	Williams
North Dakota	Lappenküper	Young	Albrecht	Repp	Sanders
South Dakota State	Lappenküper	Young	Albrecht	Repp	Sanders
Oral Roberts	Lappenküper	Young	Albrecht	Repp	Sanders
South Dakota	Lappenküper	Young	Albrecht	Repp	Sanders
Western Illinois	Lappenküper	Young	Albrecht	Repp	Sanders
Omaha	Lappenküper	Young	Albrecht	Repp	Sanders
Denver	Lappenküper	Young	Albrecht	Repp	Sanders
Oral Roberts	Lappenküper	Young	Albrecht	Repp	Sanders
South Dakota	Lappenküper	Young	Albrecht	Repp	Sanders
Western Illinois	Lappenküper	Young	Albrecht	Repp	Sanders
Denver	Lappenküper	Young	Albrecht	Repp	Sanders
Omaha	Lappenküper	Young	Albrecht	Repp	Sanders
South Dakota State	Lappenküper	Young	Albrecht	Repp	Williams
North Dakota					
North Dakota State					

## BY ROTATION

5-13	Lappenküper	Young	Albrecht	Repp	Sanders
0-1	Lappenküper	Young	Hess	Sanders	Williams
0-1	Lappenküper	Young	Hess	Albrecht	Williams
0-1	Lappenküper	Young	Hess	Albrecht	Dykstra
1-4	Lappenküper	Young	Albrecht	Repp	Williams

## BY PLAYER

Lappenküper	6-20
Young	6-20
Albrecht	6-19
Repp	6-16
Sanders	6-14
Williams	1-6
Hess	0-3
Dykstra	0-1

## TOP-10 BENCH SCORERS...

Player	Pts.	Opponent	Date
Jaelencia Williams	23	Oral Roberts	1/9
Jaelencia Williams	16	South Dakota	2/2
Hannah Hess	16	Taylor	11/12
Sierra Bell	15	IU Kokomo	11/6
Sh'Toya Sanders	14	at South Dakota State	2/20
Jaelencia Williams	12	at Oral Roberts	1/30
Kierstyn Repp	12	at Milwaukee	12/1
Hannah Albrecht	12	at Purdue	11/18
Jaelencia Williams	12	Taylor	11/12
Hannah Hess	11	at Western Illinois	1/19
Hannah Hess	11	Eastern Michigan	12/8
Sierra Bell	11	South Dakota State	1/3

## WHY MASTODONS?...

It all started about 10,000 years ago...

That's when mastodons roamed the southern Great Lakes region of North America. These stocky versions of modern elephants reached heights of about ten feet at the shoulder, with tusks that curved upward that were six feet or more in length. Mastodons were browsers who fed mostly on leaves and twigs from small trees and shrubs.

One such mastodon found its final resting place about two miles south of Angola, Indiana, on land that would eventually become part of Orsie Routsong's farm. In the fall of 1968, Routsong decided to expand a small pond on his property. An excavator was hired and instructed to pile the excavated material around the edge of the pond. Several days after the excavation was finished a heavy rain storm pounded the piles of dirt.

The next day, a young neighbor boy of Routsong's discovered a large bone in one of the dirt piles. Routsong knew it was something out of the ordinary, so he called Jack Sunderman, chair of the IPFW Geology Department, to identify the bone, and to ask for advice on what to do with it. Sunderman says his first question was, "How big is the bone," with Routsong's answer being "pretty big, maybe 3 or 4 feet long."

When Sunderman got to the farm, he identified the bone as a leg bone of a mastodon. He told Routsong a skeleton like this would have scientific and instructional value if a large portion of it could be located. Routsong agreed, and also agreed to have the IPFW Geology Department do the excavation. Sunderman got two more faculty members, Geoffrey Matthews and Bernd Erdtmann, and several geology students to help in the project.

After all the mastodon bones were collected, cleaned, and preserved, Routsong agreed to have the adult mastodon skeleton placed on permanent display at IPFW; the skull of a nearby baby mastodon is now on loan to Science Central.

In the spring of 1970, The Communicator (IPFW's student newspaper) began a drive to come up with a mascot for IPFW. Some of the suggested choices included the Boiler-Hoosiers, Warhawks, Marauders, Frontiersmen, Pioneers, Elfs, and Hobbits. Those names and others came from student suggestions. Steve Pettyjohn, who served as the student body president in 1968-69, wrote a letter to the editor about the school mascot. In his letter, Pettyjohn extolled the virtues of choosing the mastodon as IPFW's mascot: "It sounds different, strange - that's exactly why. It's different and yes, even strange. For God's Sakes, let's have the courage to be a little different."

In the meantime, former Indiana Congressman Mark Souder, who served as student body president in 1969-70, recalls being lobbied by the Geology Club to choose the mastodon.

According to Nusbaumer, "Souder appointed a committee in student government to select a name although he was lobbying hard for the mastodon." After some discussion on the subject, Souder says a vote was taken by the committee and the mastodon came out the winner. Souder finished his recollection with these thoughts: "History shows that the advocacy of the geology club was correct. The fast, decisive action of the elected student government—though it did not please everyone and was not a precedent that the University desired to see—has also been upheld by history as IPFW regularly scores high in any list of unique university nicknames; even in this era when everybody strives to be different. We did it decades ago."

## WHAT IS A MASTODON?...(ACCORDING TO WIKIPEDIA)

Mastodons are any species of extinct proboscideans (mammals with tusks and long, muscular trunks) in the genus *Mammot*, distantly related to elephants, that inhabited North and Central America during the late Miocene or late Pliocene up to their extinction at the end of the Pleistocene 10,000 to 11,000 years ago. Mastodons lived in herds and were predominantly forest dwelling animals that fed on a mixed diet of browsing and grazing with a seasonal preference for browsing, in contrast to living elephants that are mostly grazing animals.

Modern reconstructions based on partial and skeletal remains reveal that mastodons were very similar in appearance to elephants and, to a lesser degree, mammoths, though not closely related to either one. Compared to mammoths, mastodons had shorter legs, a longer body and were more heavily muscled, a build similar to that of the current Asian elephants. The average body size of the species was around 2.3 m (7 ft 7 in) in height at the shoulders, corresponding to a large female or a small male, but large males could grow up to 2.8 m (9 ft 2 in) in height and weigh as much as 4.5 tonnes (5 short tons).

<b>PURDUE FORT WAYNE WHEN...</b>	<b>2018-19</b>	<b>NELSON</b>
Overall	6-20	15-68
Home	4-7	11-27
Road	1-13	2-39
Neutral	0-0	1-2
At Memorial Coliseum	0-1	0-3
Wearing White	4-6	6-13
Wearing Grey	1-1	3-4
Wearing Black	1-14	3-16
Wearing Pink	0-0	0-1
Summit League	2-12	5-39
Summit League Home	1-4	4-16
Summit League Road	0-8	0-23
Non-League	4-8	10-28
Non-League Home	3-3	7-11
Non-League Road	1-5	2-16
Following a win	1-5	1-14
Following a loss	4-15	13-49
Against top 25 (AP) teams	0-0	0-1
Against Mid-Major top 25 teams	0-4	0-17
In Overtime	0-0	0-1
In Multiple Overtimes	0-0	0-0
Regular Season Tournaments	0-0	1-2
Postseason	0-0	0-1
Wins Tip	6-11	11-24
Scores First	4-10	7-21
Leads after 1st quarter	6-5	11-12
Trails after 1st quarter	0-14	3-55
Tied after 1st quarter	0-1	1-1
Leads at half	5-1	11-4
Trails at half	1-19	4-62
Tied at half	0-1	0-2
Leading with 5:00 left	6-0	13-0
Trailing with 5:00 left	0-19	2-67
Tied with 5:00 left	0-1	0-1
Shoots ≥ 50%	3-0	5-0
Shoots < 50%	3-20	10-68
Opponent shoots ≥ 50%	0-7	1-27
Opponent shoots < 50%	6-13	14-41
Shoots better than opp.	6-4	12-6
Shoots worse than opp.	0-16	3-62
Makes 5+ 3-Pt. shots	5-14	12-36
Makes 9+ 3-Pt. shots	1-3	4-7
More 3-Pt. made than opp.	5-7	11-22
Has equal 3-Pt. made	0-4	0-9
Fewer 3-Pt. made than opp.	1-9	4-36
Shoots 3-Pt. better than opp.	6-7	13-19
Shoots 3-Pt. worse than opp.	0-13	2-49
Shoots 3-Pt. 35% or better	2-6	10-19
Shoots 3-Pt. less than 35%	4-14	5-49
Opp. Shoots 3-Pt. 35% or better	1-10	3-45
Opp. Shoots 3-Pt. less than 35%	5-10	12-23
More FTs made than opp.	3-6	11-18
Has equal FTs made	0-1	0-3
Fewer FTs made than opp.	3-13	4-17
Out-rebounds opp.	3-7	9-21
Has equal rebounds	1-1	2-2
Is out-rebounded	2-12	4-45
More turnovers than opp.	1-14	6-49
Has equal turnovers as opp.	0-3	0-5
Fewer turnovers than opp.	5-3	9-14
More assists than opp.	5-4	6-9
Has equal assists	0-1	2-2
Fewer assists than opp.	1-15	7-57
More blocks than opp.	5-8	8-15
Has equal blocks	1-3	2-6
Fewer blocks than opp.	0-9	5-47
More steals than opp.	4-5	9-17
Has equal steals	0-3	0-7
Fewer steals than opp.	2-12	6-44
More fouls than opp.	3-13	5-48
Has equal fouls	1-3	1-3
Fewer fouls than opp.	2-4	9-17

Plays a team with ≥ .500 record	4-13	8-51
Plays a team with < .500 record	2-7	7-17
Plays in the state of Indiana	6-8	13-32
Plays outside Indiana	0-12	2-36
Plays in Eastern Time Zone	5-9	13-38
Plays in Central Time Zone	1-10	2-27
Plays in Mountain Time Zone	0-1	0-3
Plays in Pacific Time Zone	0-0	0-0
Plays during the day	3-11	8-36
Plays at night (5pm or later)	3-9	7-32
Plays in November	3-5	7-16
Plays in December	1-5	4-17
Plays in January	2-5	4-17
Plays in February	0-5	1-17
Plays in March	0-0	0-1
Plays on Sunday	1-2	2-5
Plays on Monday	1-0	1-3
Plays on Tuesday	2-0	3-5
Plays on Wednesday	0-6	2-15
Plays on Thursday	1-4	1-12
Plays on Friday	0-1	1-4
Plays on Saturday	1-7	5-24
Attendance is ≤ 999	5-14	14-47
Attendance is ≥ 1,000	1-6	1-21
Margin is 1 point	0-0	1-0
Margin is between 2-5	0-1	2-1
Margin is between 6-10	3-5	6-10
Margin is between 11-20	1-8	4-28
Margin is more than 20	2-6	2-27
Scores ≤ 49 pts.	0-4	0-17
Scores 50-59 pts.	1-5	1-30
Scores 60-69 pts.	0-10	3-16
Scores 70-79 pts.	2-1	7-4
Scores 80-89 pts.	3-0	3-1
Scores 90-99 pts.	0-0	1-0
Scores 100+ pts.	0-0	0-0
Opponent Scores ≤ 49 pts.	2-0	2-1
Opponent scores 50-59 pts.	2-1	5-2
Opponent scores 60-69 pts.	1-4	4-20
Opponent scores 70-79 pts.	1-9	4-27
Opponent scores 80-89 pts.	0-4	0-12
Opponent scores 90-99 pts.	0-2	0-3
Opponent scores 100+ pts.	0-0	0-2
Force 20 or more turnovers	3-0	4-4
Commit 15 or more turnovers	5-13	8-42
Make 10 or more steals	3-2	5-5
Starters outscore opp. starters	5-1	11-3
≤ 2 players score 10+ pts.	1-10	3-45
3 players score 10+ pts.	1-5	2-16
4+ players score 10+ pts.	4-4	10-6
1+ player with 20+ points	4-4	5-12
1+ player with 10+ rebounds	2-5	2-13
1+ player with double-double	1-4	1-8
1+ player with 5+ 3-Pt. made	0-1	0-4
1+ player fouls out	1-9	5-26
More bench points	3-10	9-27
Has equal bench points	0-0	0-1
Fewer bench points	3-10	6-39
More points in the paint	3-3	7-8
Has equal points in the paint	0-1	0-2
Fewer points in the paint	3-16	8-58
More points off turnovers	5-4	10-10
Has equal points off turnovers	0-1	1-3
Fewer points off turnovers	1-15	4-54
More 2nd chance points	2-9	8-26
Has equal 2nd chance points	1-1	1-2
Fewer 2nd chance points	3-10	6-40
More fast break points	3-5	5-11
Has equal fast break points	1-2	1-8
Fewer fast break points	2-13	9-49
Longest Winning Streak	2	2
Longest Losing Streak	7	11
Current Streak	L6	

## PLAYER OF THE WEEK...

Senior guard De'Jour Young earned her first career Summit League Player of the Week honor as announced by the league on January 28.

Young earned Player of the Week honors after leading the Mastodons to back-to-back wins over Omaha and Denver. For the week, she averaged 19.5 points, 4.5 rebounds, 1.5 assists, and 1.5 steals, all while shooting 68.2% from the field. Young kicked off the week scoring a career-high 25 points in a 56-48 win over the Mavericks. She pulled down six rebounds while shooting 10-of-15 (66.7%) from the floor. Young concluded the weekend with 14 points on 71.4% shooting, helping the 'Dons to a 70-55 win against Denver. Young and the Mastodons held the Pioneers to 26.2% shooting on the night, their lowest total in almost four years.

## 20-15...

Jaelencia Williams earned her first career double-double against Oral Roberts on Jan 9. Williams finished the night with 23 points, 15 rebounds, and four blocks. She became the first Mastodon to finish with 20 and 15 in a game since Stefanie Mauk on Dec. 22, 2012 against Rochester. Her 23 points and 15 rebounds were both career highs.

## #BEATTYPE1 GAME...

The Summit League and its member institutions are teaming up to bring awareness to type 1 diabetes. Currently, there are 1.25 million Americans battling type 1 diabetes. While the condition occurs at every age and in every race, most of those diagnosed are children. More than 70,000 children under the age of 14 are newly diagnosed with this life-changing condition each year.

- Nearly 10 percent of Americans are affected by diabetes, with over one million new diagnoses made each year.

- Type 1 diabetes is typically diagnosed in juveniles and those affected juveniles stay on insulin therapy for life.

## WELCOME TO THE CLUB...

Senior De'Jour Young become the 20th member of the Mastodons' 1,000-point club on Dec. 19 against Valparaiso. Kierstyn Repp hit Young with a bounce pass down the lane for a layup at the 6:53 mark of the second quarter. Young went on to finish with a career- and game-high 14 rebounds, to go along with 13 points. She's the first Mastodons since now assistant coach Haley Seibert joined the club on Dec. 6, 2014.

1.	2,358	Lisa Miller	1988-92
2.	2,107	Lindy Jones	1992-96
3.	1,730	Johnna Lewis-Carlisle	2004-08
4.	1,676	Amanda Hyde	2010-14
5.	1,589	Leah Sheets	1994-98
6.	1,572	Amy Gearlds	1999-04
7.	1,527	Robin Scott	1987-91
8.	1,480	Teena Merrell	1986-90
9.	1,386	Haley Seibert	2011-15
10.	1,293	Rhonda Unverferth	1982-85
11.	1,246	Jordan Zuppe	2007-11
12.	1,243	Stephanie Rosado	2009-12
13.	1,225	Anne Boese	2008-12
14.	1,169	<b>De'Jour Young</b>	<b>2015-present</b>
15.	1,168	Pam Edwards	1989-92,93-94
16.	1,153	Ashley Johnson	2003-07
17.	1,128	Chelsey Jackson	2007-11
18.	1,106	Jennie Newhard	1992-96
19.	1,076	Jamie Holderman	1999-01
20.	1,018	Courtney Nicley	2001-05





## SWATTING MORE FLIES...

The Mastodons reached double-digit blocks for the second time this season, but this time, they tied the program record with 11 blocks against Goshen on Dec. 16. The 11 blocks tied a program mark which has been reach twice before, Nov. 23, 2010 against Indiana Tech and Dec. 2, 2005 against Kalamazoo. Individually, Jaelencia Williams five blocks are the most by a Mastodon since Ariana Simmons also had five against Ball State on Dec. 29, 2013.

## HASTA LA VISTA, BASKETBALL...

The Mastodons were a swatting machine in its season opener, as the 'Dons finished with 10 blocks against IU Kokomo. Their 10 blocks are tied for third most in program history, as the 'Dons had had 11 blocks twice. The Last time the Mastodons finished with double-digit blocks as a team came on Nov. 23, 2010 when they had 11 against Indiana Tech.

## STOP! THIEF!...

In her first game as a Mastodon, Sierra Bell became only the third player in program history with eight or more steals, when she made eight against IU Kokomo on Nov. 6. The last player to have at least eight was Kayla Drake, whom set a program record with 10 steals at South Dakota State on Jan. 22, 2011.

## MAKING THE ROUNDS...

Of the current 32 Division I basketball conferences, Purdue Fort Wayne has taken on at least one school, currently or when they played, in all but four of those leagues. The four remaining conferences the Mastodons have yet to play are: Colonial Athletic Association, Ivy League, Southwestern Athletic Conference, and West Coast Conference. Three other leagues (Big Sky Conference, Pacific 12 Conference, and Southland Conference) Purdue Fort Wayne played a current member while they were a part of another conference.

## SEASON OPENERS...

With its season-opening victory over IU Kokomo, the Purdue Fort Wayne women's basketball team improved its all-time record to 17-26 in season openers. The last time the 'Dons won a season opener came during the 2015-16 season when they defeated Trine.

## SUMMIT LEAGUE PRESEASON POLL...

Purdue Fort Wayne was picked to finish ninth in the Summit League preseason poll of the league's head coaches. The Mastodons received 181 points as coaches were not allowed to vote for their own teams.

South Dakota State was tabbed as the preseason favorite to win the 2018-19 Summit League Championship, receiving 24 first-place votes to finish atop the poll with 624 points.

### 2018-19 Summit League Preseason Poll

Place	Team	Points (1st)
1.	South Dakota State	624 (24)
2.	South Dakota	557 (9)
3.	Western Illinois	469
4.	Oral Roberts	435
5.	Denver	431
6.	North Dakota	380
7.	North Dakota State	271
8.	Omaha	233
9.	Purdue Fort Wayne	181

### Preseason Player of the Year:

Macy Miller – South Dakota State

### First Team

Name	School	Pos.	Year
Macy Miller	South Dakota State	G	Sr.
Madison Guebert	South Dakota State	G	Sr.
Ciara Duffy	South Dakota	G	Jr.
Allison Arens	South Dakota	G	Sr.
Taylor Higginbotham	Western Illinois	G	Sr.
Lexi Klabo	North Dakota	F	Sr.

### Second Team

Name	School	Pos.	Year
Myah Selland	South Dakota State	G/F	So.
Maya Mayberry	Oral Roberts	G	So.
Claire Gritt	Denver	G	So.
Madison Mckeever	South Dakota	G	Jr.
Tagyn Laron	South Dakota State	F	Jr.

## WOMEN'S MID-MAJOR POLL...

(Feb. 19)

Rank	School	Rec.	Pts.
1	<b>South Dakota (27)</b>	<b>23-3</b>	<b>770</b>
2	FGCU (2)	21-4	712
3	Gonzaga (1)	22-3	697
4	<b>South Dakota State</b>	<b>20-5</b>	<b>696</b>
5	Drake (1)	18-5	663
6	BYU	20-5	601
7	Central Michigan	18-6	542
8	Bucknell	21-4	540
9	James Madison	19-4	531
10	Ohio	21-3	462
11	Quinnipiac	19-6	443
12	Wright State	20-6	435
13	Belmont	20-5	376
14	Drexel	18-5	366
15	Miami	19-4	361
16	Buffalo	17-6	319
17	Penn	16-4	252
18	Stephen F. Austin	21-3	233
19	Maine	19-7	178
20	American	16-8	142
21	Green Bay	17-7	141
22	Saint Mary's	18-8	108
23	Princeton	13-9	71
24	Missouri State	15-8	66
25	Youngstown State	20-6	61

**OTHERS RECEIVING VOTES:** Marist 52, UC Davis 43, Lamar 32, Mercer 26, Rider 22, North Carolina A&T 18, Little Rock 17, Toledo 17, Kent State 13, South Alabama 12, New Mexico State 11, Pepperdine 10, Portland State 7, Troy 7, UT Arlington 7, Radford 5, Idaho State 4, IUPUI 3, Harvard 1, Northern Illinois 1, UC Irvine 1.

## ACTIVE CAREER LEADERS...

<b>Points</b>	De'Jour Young, 1,169
<b>Rebounds</b>	De'Jour Young, 588
<b>Field Goals Made</b>	De'Jour Young, 421
<b>3-Pointers Made</b>	Kierstyn Repp, 122
<b>Free Throws Made</b>	De'Jour Young, 264
<b>Assists</b>	De'Jour Young, 193
<b>Steals</b>	De'Jour Young, 132
<b>Blocked Shots</b>	Jaelencia Williams, 64
<b>Games Played</b>	De'Jour Young, 111
<b>Games Started</b>	De'Jour Young, 100
<b>Minutes Played</b>	De'Jour Young, 3,307

## Gates Center Attendance Records

1.	1/19/2002	Toledo	1,827
2.	12/10/2006	Indiana	1,801
3.	<b>1/26/2019</b>	<b>Denver</b>	<b>1,536</b>
4.	11/19/2004	Bowling Green	1,438
5.	11/21/2017	UIC	1,289
6.	12/29/2013	Ball State	1,278
7.	1/24/2015	Denver	1,215
8.	1/13/1996	Southern Indiana	1,150
9.	12/6/2014	Northern Kentucky	1,147
10.	12/6/2012	Purdue	1,124

## PURDUE FORT WAYNE WINS VS. LOSSES...

Category	Wins	Losses
Points per game	75.8	58.1
Opp. points per game	56.3	75.1
FG pct.	.489	.378
Opp. field goal pct.	.320	.461
3 pt. FG pct.	.327	.315
Opp. 3 pt. FG pct.	.237	.367
Free throw pct.	.685	.661
Opp. Free throw pct.	.652	.741
Rebounds per game	36.7	33.3
Opp. Rebounds per game	37.5	35.8
Rebound margin	-0.8	-2.5
Assists per game	12.8	10.2
Opp. Assists per game	8.8	15.5
Turnovers per game	16.8	17.2
Opp. Turnovers per game	19.0	11.6
Turnover margin	+2.2	-5.6
Steals per game	10.5	5.7
Opp. Steals per game	7.7	8.7
Blocks per game	7.5	3.3
Opp. Blocks per game	2.7	3.4
Fouls per game	18.2	18.3
Opp. Fouls per game	17.7	15.5



## PURDUE FORT WAYNE INDIVIDUAL GAME HIGHS

Points	25	De'Jour Young vs Omaha (01/24/19)
Field Goals Made	10	De'Jour Young vs Omaha (01/24/19)
Field Goal Att.	17	De'Jour Young at North Dakota State (12/28/18)
FG Pct (min 6 made)	1.000 (6-6)	Jaelencia Williams vs Valparaiso (12/19/18)
3-Point FG Made	5	Kierstyn Repp at Eastern Illinois (11/15/18)
3-Point FG Att.	12	Kierstyn Repp vs Western Illinois (02/06/19)
3-Pt FG Pct (min 3 made)	.750 (3-4)	Hannah Albrecht at Loyola-Chicago (11/29/18)
Free Throws Made	9	Jaelencia Williams vs Eastern Michigan (12/08/18)
Free Throw Att.	12	Jaelencia Williams vs Eastern Michigan (12/08/18)
FT Pct (min 7 made)	1.000 (7-7)	Sierra Bell vs Oral Roberts (01/09/19)
Rebounds	15	Jaelencia Williams vs Oral Roberts (01/09/19)
Assists	9	Sierra Bell vs Oral Roberts (01/09/19)
Steals	8	Sierra Bell vs IU Kokomo (11/06/18)
Blocked Shots	7	Jaelencia Williams vs Denver (01/26/19)

## PURDUE FORT WAYNE TEAM GAME HIGHS

POINTS	87	IU KOKOMO (11/06/18)
FIELD GOALS MADE	35	GOSHEN (12/16/18)
	35	IU KOKOMO (11/06/18)
FIELD GOAL ATTEMPTS	70	at Western Illinois (01/19/19)
FIELD GOAL PERCENTAGE	.565 (35-62)	IU KOKOMO (11/06/18)
3 PT FIELD GOALS MADE	11	at Western Illinois (01/19/19)
	11	at Loyola-Chicago (11/29/18)
	11	at Eastern Illinois (11/15/18)
3 PT FG ATTEMPTS	31	at Western Illinois (01/19/19)
3 PT FG PERCENTAGE	.524 (11-21)	at Loyola-Chicago (11/29/18)
FREE THROWS MADE	23	EASTERN MICHIGAN (12/08/18)
FREE THROW ATTEMPTS	28	EASTERN MICHIGAN (12/08/18)
FREE THROW PERCENTAGE	.923 (12-13)	at Oral Roberts (01/30/19)
REBOUNDS	55	at Western Illinois (01/19/19)
ASSISTS	17	GOSHEN (12/16/18)
STEALS	17	IU KOKOMO (11/06/18)
BLOCKED SHOTS	11	GOSHEN (12/16/18)
TURNOVERS	26	at Eastern Illinois (11/15/18)
FOULS	27	DENVER (01/26/19)

## PURDUE FORT WAYNE TEAM GAME LOWS

POINTS	44	at Purdue (11/18/18)
FIELD GOALS MADE	13	at Milwaukee (12/01/18)
FIELD GOAL ATTEMPTS	45	SOUTH DAKOTA STATE (01/03/19)
FIELD GOAL PERCENTAGE	.241 (13-54)	at Milwaukee (12/01/18)
3 PT FIELD GOALS MADE	2	SIUE (11/24/18)
3 PT FG ATTEMPTS	12	at Denver (02/13/19)
	12	SOUTH DAKOTA STATE (01/03/19)
	12	ORAL ROBERTS (01/09/19)
3 PT FG PERCENTAGE	.118 (2-17)	SIUE (11/24/18)
FREE THROWS MADE	3	at Western Illinois (01/19/19)
FREE THROW ATTEMPTS	9	at Western Illinois (01/19/19)
FREE THROW PERCENTAGE	.400 (4-10)	at Western Michigan (11/08/18)
REBOUNDS	17	at Loyola-Chicago (11/29/18)
ASSISTS	7	SIUE (11/24/18)
	7	at Western Illinois (01/19/19)
	7	ONAHA (01/24/19)
STEALS	1	at South Dakota State (02/20/19)
	1	at Eastern Illinois (11/15/18)
BLOCKED SHOTS	0	ORAL ROBERTS (01/09/19)
	0	at Western Illinois (01/19/19)
	0	at Western Michigan (11/08/18)
TURNOVERS	11	EASTERN MICHIGAN (12/08/18)
	11	SOUTH DAKOTA STATE (01/03/19)
	11	at Loyola-Chicago (11/29/18)
FOULS	11	at North Dakota State (12/28/18)
	11	at Oral Roberts (01/30/19)
	11	at Evansville (11/20/18)
	11	SOUTH DAKOTA (02/02/19)

## PURDUE FORT WAYNE TEAM RECORDS (MIN. 20 GAMES)

### Record

MOST WINS.....	23 (1995-96)
CONSECUTIVE WINS.....	14 (11/18/95-1/13/96)
MOST HOME WINS.....	12 (1982-83, 1988-89, 1995-96)
CONSECUTIVE HOME WINS.....	12 (12/1/95-2/24/96)
MOST LOSSES .....	24 (1998-99, 2016-17)
CONSECUTIVE LOSSES .....	14 (11/13/98-1/16/99)
MOST GAMES PLAYED .....	31 (2010-11)
LARGEST HOME CROWD (GATES) .....	1,827, Toledo (1/19/02)
LARGEST HOME CROWD (COLISEUM).....	2,500, NDSU (2/26/06)
LARGEST ROAD CROWD .....	9,194, Wichita State (1/18/13)

### Points

GAME HIGH .....	117, vs Tri-State (12/3/88)
SEASON HIGH .....	2,431 (1989-90)
GAME LOW.....	28, Indiana State (12/28/02)
SEASON LOW .....	1,110 (1978-79)

### Field Goals Made

GAME HIGH .....	48, at Southern Indiana (2/7/91)
SEASON HIGH .....	901 (1989-90)
GAME LOW.....	11, Wichita State (11/8/13)
SEASON LOW .....	11, Winthrop (12/23/05)
SEASON LOW .....	443 (1978-79)

### Field Goal Attempts

GAME HIGH .....	92, at Purdue (11/21/04)
SEASON HIGH .....	1,864 (2007-08)
GAME LOW.....	38, Wichita State (11/8/13)
SEASON LOW .....	1,263 (1978-79)

### Field Goal Percentage

GAME HIGH .....	.720 (36-of-50), at IUPUI (1/23/92)
SEASON HIGH .....	.492 (877-1782), (1991-92)
GAME LOW.....	.163 (15-of-92), Purdue (11/21/04)
LOW SEASON .....	.331 (595-1798), (2004-05)

### 3-Point Field Goals Made

GAME HIGH .....	18, at Missouri-St. Louis (2/15/01)
SEASON HIGH .....	271 (2013-14)
GAME LOW.....	0, Several times
SEASON LOW .....	13 (1992-93)

### 3-Point Field Goal Attempts

GAME HIGH .....	48, vs Bowling Green (11/19/04)
SEASON HIGH .....	48, vs Grace (12/11/99)
GAME LOW.....	743 (2013-14)
SEASON LOW .....	0, Several times
SEASON LOW .....	59 (1992-93)

### 3-Point Field Goal Percentage (min. 10 att.)

GAME HIGH ...	.800 (8-of-10), at Cleveland State (1/26/04)
SEASON HIGH .....	.430 (89-207), (1989-90)
GAME LOW.....	.000 (0-of-10), St. Joseph's (1/3/91)
LOW SEASON .....	.220 (44-200), (1997-98)

### Free Throws Made

GAME HIGH .....	42, vs NKU (12/21/95)
SEASON HIGH .....	604 (1995-96)
GAME LOW.....	1, Indianapolis (2/20/97) and (3/6/1993)
SEASON LOW .....	214 (1979-80)

### Free Throw Attempts

GAME HIGH .....	52, vs NKU (12/21/95)
SEASON HIGH .....	52, at Wayne State (11/16/90)
GAME LOW.....	821 (1991-92)
SEASON LOW .....	2, Ashland (2/20/88)
SEASON LOW .....	382 (1982-83)

### Free Throw Percentage (min. 10 made/20 att.)

GAME HIGH .....	1.000 (24-of-24), vs Indiana (11/12/13)
SEASON HIGH .....	.794 (409-515), (2012-13)
GAME LOW.....	.433 (13-of-30), Kentucky (11/21/03)
SEASON LOW .....	.483 (224-464), (1978-79)

## OPPONENT INDIVIDUAL GAME HIGHS

Points	28	Courtne Lewis vs Eastern Michigan (12/08/18)
Field Goals Made	28	Karle Pace at Eastern Illinois (11/15/18)
	10	Danni Nichols at Western Illinois (01/19/19)
	10	Maya Mayberry vs Oral Roberts (01/09/19)
	10	Ae'Rianna Harris at Purdue (11/18/18)
Field Goal Att.	10	Karle Pace at Eastern Illinois (11/15/18)
	19	Karle Pace at Eastern Illinois (11/15/18)
	19	Taylor Steele at Eastern Illinois (11/15/18)
FG Pct (min 6 made)	1.000 (10-10)	Ae'Rianna Harris at Purdue (11/18/18)
3-Point FG Made	6	Courtne Lewis vs Eastern Michigan (12/08/18)
	6	Janae Gonzales at Loyola-Chicago (11/29/18)
	6	Karle Pace at Eastern Illinois (11/15/18)
3-Point FG Att.	11	Becca Buchs vs Taylor (IN) (11/12/18)
3-Pt FG Pct (min 3 made)	1.000 (4-4)	Rylie Gasco Jensen vs South Dakota State (01/03/19)
Free Throws Made	7	Claire Killian at Omaha (02/16/19)
	7	Lexi Klabo at North Dakota (12/30/18)
	7	Sofija Zivaljevic at North Dakota State (12/28/18)
	7	Kayana Traylor at Purdue (11/18/18)
Free Throw Att.	10	Emily Dietz at North Dakota State (12/28/18)
FT Pct (min 7 made)	1.000 (7-7)	Lexi Klabo at North Dakota (12/30/18)
Rebounds	18	Mariah Murdie at Omaha (02/16/19)
Assists	8	Olivia Kaufmann at Western Illinois (01/19/19)
Steals	7	Olivia Kaufmann at Western Illinois (01/19/19)
Blocked Shots	5	Mariah Murdie at Omaha (02/16/19)

## OPPONENT TEAM GAME HIGHS

POINTS	92	at South Dakota State (02/20/19)
FIELD GOALS MADE	34	at South Dakota State (02/20/19)
FIELD GOAL ATTEMPTS	70	at Eastern Illinois (11/15/18)
FIELD GOAL PERCENTAGE	.617 (29-47)	at Loyola-Chicago (11/29/18)
3 PT FIELD GOALS MADE	12	WESTERN ILLINOIS (02/06/19)
	12	EASTERN MICHIGAN (12/08/18)
	12	TAYLOR (IN) (11/12/18)
3 PT FG ATTEMPTS	33	TAYLOR (IN) (11/12/18)
3 PT FG PERCENTAGE	.556 (10-18)	at Loyola-Chicago (11/29/18)
FREE THROWS MADE	21	at North Dakota State (12/28/18)
FREE THROW ATTEMPTS	31	at Purdue (11/18/18)
FREE THROW PERCENTAGE	.929 (13-14)	at Loyola-Chicago (11/29/18)
REBOUNDS	48	DENVER (01/26/19)
ASSISTS	28	at South Dakota State (02/20/19)
STEALS	14	at Denver (02/13/19)
	14	DENVER (01/26/19)
	14	at Western Illinois (01/19/19)
BLOCKED SHOTS	6	at Omaha (02/16/19)
	6	SOUTH DAKOTA STATE (01/03/19)
	6	at Milwaukee (12/01/18)
	6	at Loyola-Chicago (11/29/18)
TURNOVERS	26	IU KOKOMO (11/06/18)
FOULS	24	DENVER (01/26/19)

## OPPONENT TEAM GAME LOWS

POINTS	45	GOSHEN (12/16/18)
FIELD GOALS MADE	14	GOSHEN (12/16/18)
FIELD GOAL ATTEMPTS	47	at Loyola-Chicago (11/29/18)
FIELD GOAL PERCENTAGE	.226 (14-62)	GOSHEN (12/16/18)
3 PT FIELD GOALS MADE	0	at North Dakota (12/30/18)
3 PT FG ATTEMPTS	7	at North Dakota (12/30/18)
3 PT FG PERCENTAGE	.000 (0-7)	at North Dakota (12/30/18)
FREE THROWS MADE	2	at Evansville (11/20/18)
FREE THROW ATTEMPTS	6	at Evansville (11/20/18)
FREE THROW PERCENTAGE	.333 (2-6)	at Evansville (11/20/18)
REBOUNDS	22	SOUTH DAKOTA (02/02/19)
ASSISTS	4	GOSHEN (12/16/18)
STEALS	2	at Loyola-Chicago (11/29/18)
BLOCKED SHOTS	0	TAYLOR (IN) (11/12/18)
TURNOVERS	4	at Western Illinois (01/19/19)
FOULS	9	at Western Illinois (01/19/19)

### Rebounds

GAME HIGH .....	65, vs Shippensburg (11/19/95)
SEASON HIGH .....	1,244 (1991-92)
GAME LOW.....	18, IUPUI (3/2/13)
SEASON LOW .....	132 (1978-79)

### Assists

GAME HIGH .....	31, at Southern Indiana (2/7/91)
SEASON HIGH .....	551 (1994-95)
GAME LOW.....	1, Wichita State (11/8/13)
SEASON LOW .....	1, Hampton (11/29/86)
SEASON LOW .....	125 (1980-81)

### Blocks

GAME HIGH .....	11, vs Indiana Tech (11/23/10)
SEASON HIGH .....	11, vs Kalamazoo (12/2/05)
SEASON HIGH .....	<b>11, vs Goshen (12/16/18)</b>
SEASON HIGH .....	119 (2009-10)
GAME LOW.....	0, Several times
SEASON LOW .....	18 (1986-87)

### Steals

GAME HIGH .....	25, vs Kalamazoo (12/2/05)
SEASON HIGH .....	315 (1990-91)
GAME LOW.....	0, St. Bonaventure (12/2/08)
SEASON LOW .....	0, UMBL (12/20/05)
SEASON LOW .....	188 (2008-09)

### Turnovers

GAME HIGH .....	40, Hampton (12/4/87)
SEASON HIGH .....	655 (1989-99)
GAME LOW.....	5, North Dakota State (1/5/09)
SEASON LOW .....	184 (1980-81)



## PURDUE FORT WAYNE INDIVIDUAL QUARTER HIGHS

Points	13	De'Jour Young, 3rd, at North Dakota State (12/28/18)
FG Made	5 (2x)	De'Jour Young, 3rd, at North Dakota State (12/28/18)
FG Att.	9	MR - De'Jour Young, 3rd, at North Dakota State (12/28/18)
3-Pt FG Made	3	Hannah Hess, 3rd, at Western Illinois (1/19/19)
3-P FG Att.	5 (2x)	MR - Kierstyn Repp, 2nd, vs Western Illinois (2/6/19)
FT Made	6	Hannah Albrecht, 4th, vs Denver (1/26/19)
FT Att.	8	Hannah Albrecht, 4th, vs Denver (1/26/19)
Rebounds	8	Sh'Toya Sanders, 3rd, at Western Illinois (1/19/19)
Offensive Rebounds	5	Sh'Toya Sanders, 3rd, at Western Illinois (1/19/19)
Defensive Rebounds	5 (2x)	MR - De'Jour Young, 3rd, vs Valparaiso (12/19/18)
Fouls	4 (2x)	MR - Sierra Bell, 4th, vs Oral Roberts (1/9/19)
Assists	4	Anna Lappenkuper, 1st, vs Goshen (12/16/18)
Blocked Shots	4 (2x)	MR - Jaelencia Williams, 3rd, vs Denver (1/26/19)
Steals	3 (5x)	MR - De'Jour Young, 3rd, vs Western Illinois (2/6/19)

## PURDUE FORT WAYNE TEAM QUARTER HIGHS

Points	26	1st, vs Goshen (12/16/18)
1st Quarter Points	26	vs Goshen (12/16/18)
2nd Quarter Points	24	vs IU Kokomo (11/6/18)
3rd Quarter Points	24	vs Taylor (11/12/18)
4th Quarter Points	24	vs Western Illinois (2/6/19)
Fewest Points (Non-OT)	3	1st, at Milwaukee (12/1/18)
FG Made	11	2nd, vs IU Kokomo (11/6/18)
FG Att.	23	2nd, at Omaha (2/16/19)
Highest FG Pct.	.733 (11-15)	2nd, vs IU Kokomo (11/6/18)
Lowest FG Pct.	.000 (0-12)	1st, at Milwaukee (12/1/18)
3-Pt FG Made	4 (3x)	MR - 3rd, at Western Illinois (1/9/19)
3-Pt FG Att.	9 (2x)	MR - 4th, at Western Illinois (1/19/19)
3-Pt FG Pct. (2 made)	1.000 (3-3)	1st, vs South Dakota (2/2/19)
FT Made	11	4th, at North Dakota (12/30/18)
FT Att.	14	4th, vs Eastern Michigan (12/8/18)
FT Pct (6 made)	1.000 (7-7) (2x)	MR - 4th, vs Western Illinois (2/6/19)
Rebounds	18	3rd, at Western Illinois (1/19/18)
Offensive Rebounds	9 (2x)	MR - 4th, at Western Illinois (1/19/19)
Defensive Rebounds	11 (2x)	MR - 1st, vs Oral Roberts (1/9/19)
Fouls	10 (3x)	MR - 4th, vs Denver (1/26/19)
Assists	6 (4x)	MR - 4th, at North Dakota State (12/30/18)
Turnovers	13	1st, at Eastern Illinois (11/15/18)
Blocked Shots	6	1st, vs Oral Roberts (1/9/19)
Steals	7	4th, vs IU Kokomo (11/6/18)

## OPPONENT INDIVIDUAL QUARTER HIGHS

Points	17	Mariah Murdie, 4th, vs Omaha (1/24/19)
FG Made	6	Mariah Murdie, 4th, vs Omaha (1/24/19)
FG Att.	9	Mariah Murdie, 4th, vs Omaha (1/24/19)
3-Pt FG Made	4	Janae Gonzales, 1st, at Loyola-Chicago (11/29/18)
3-P FG Att.	5	Courtne Lewis, 1st, vs Eastern Michigan (12/8/18)
FT Made	6	Claire Killian, 4th, at Omaha (2/16/19)
FT Att.	8	Emily Dietz, 4th, at North Dakota State (12/28/18)
Rebounds	7	Mariah Murdie, 2nd, at Omaha (2/16/19)
Offensive Rebounds	3 (7x)	MR - Grace White, 1st, vs Denver (1/26/19)
Defensive Rebounds	6	Taylor Higginbotham, 2nd, vs Western Illinois (2/6/19)
Fouls	4	Claire Gritt, 4th, vs Denver (1/26/19)
Assists	5 (2x)	MR - Macy Miller, 1st, at South Dakota State (2/20/19)
Blocked Shots	3 (3x)	MR - Mariah Murdie, 2nd, at Omaha (2/16/19)
Steals	3 (3x)	MR - Taylor Frederick, 2nd, vs South Dakota (2/2/19)

## OPPONENT TEAM QUARTER HIGHS

Points	31 (2x)	MR - vs Western Illinois (2/6/19)
1st Quarter Points	26 (2x)	MR - at Oral Roberts (1/30/19)
2nd Quarter Points	31	at North Dakota (12/30/18)
3rd Quarter Points	26	vs South Dakota State (1/3/19)
4th Quarter Points	31	vs Western Illinois (2/6/19)
Fewest Points (Non-OT)	4	2nd, vs Omaha (1/24/19)
FG Made	12	2nd, at North Dakota (12/30/18)
FG Att.	23	2nd, at Eastern Illinois (11/15/18)
Highest FG Pct.	.857 (6-7)	4th, at Milwaukee (12/1/18)
Lowest FG Pct.	.091 (1-11)	2nd, vs Omaha (1/24/19)
3-Pt FG Made	5 (4x)	MR - 4th, at Denver (2/13/19)
3-Pt FG Att.	10 (3x)	MR - 1st, at Denver (2/13/19)
3-Pt FG Pct. (2 made)	.833 (5-6) (2x)	MR - 4th, at Denver (2/13/19)
FT Made	12	4th, at North Dakota State (12/28/18)
FT Att.	18	4th, at North Dakota State (12/30/18)
FT Pct (6 made)	1.000 (10-10)	4th, vs Eastern Michigan (12/8/18)
Rebounds	18	1st, at South Dakota State (2/20/19)
Offensive Rebounds	8 (3x)	MR - 1st, at South Dakota State (2/20/19)
Defensive Rebounds	11	3rd, at Milwaukee (12/1/18)
Fouls	12	4th, vs Denver (1/26/19)
Assists	9 (2x)	MR - 1st, at South Dakota State (2/20/19)
Turnovers	9	1st, vs Denver (1/26/19)
Blocked Shots	4 (2x)	MR - 2nd, at Omaha (2/16/19)
Steals	8	4th, vs Denver (1/26/19)

## PURDUE FORT WAYNE INDIVIDUAL RECORDS

<b>Points</b>	
GAME.....	43, Lindy Jones at St. Joseph's (1/27/96)
.....	43, Amanda Hyde at Southern Illinois (11/29/12)
SEASON.....	752, Lisa Miller (1991-92)
CAREER.....	2358, Lisa Miller (1988-92)

### Scoring Average

SEASON.....	26.0, Lindy Jones (1995-96)
CAREER.....	21.2, Lisa Miller (1988-92)

### Field Goals Made

GAME.....	18, Lindy Jones at St. Joseph's (1/27/96)
SEASON.....	243, Lisa Miller (1991-92)
CAREER.....	808, Lisa Miller (1988-92)

### Field Goals Attempted

GAME.....	30, Lindy Jones at St. Joseph's (1/27/96)
SEASON.....	537, Johnna Lewis-Carlisle (2007-08)
CAREER.....	1658, Johnna Lewis-Carlisle (2004-08)

### Field Goal Percentage (min. 10 att.)

GAME.....	.909 (10-of-11), Stephanie Rosado at Centenary (12/31/10)
SEASON..	.578 (170-294), Rhonda Unverferth (1984-85)
CAREER.....	.561 (216-385), Amy Neuhouser (1988-90)

### 3-Point Field Goals Made

GAME.....	9, Jamie Holderman vs SIUE (2/1/01)
.....	9, Jamie Holderman at Bellarmine (1/13/00)
SEASON.....	96, Anne Boese (2009-10)
CAREER.....	301, Anne Boese (2008-12)

### 3-Point Field Goals Attempted

GAME.....	17, Anne Boese at Oral Roberts (12/29/10)
.....	17, Jordan Zuppe vs Toledo (11/29/08)
.....	17, Jamie Holderman at Missouri-St. Louis (2/15/01)
SEASON.....	236, Amy Gearlds, (2003-04)
CAREER.....	768, Anne Boese, (2008-12)

### 3-Point Field Goal Percentage (min. 5 att.)

GAME.....	1.000 (6-of-6), Hilary O'Connell vs UMBC (12/20/05)
SEASON.....	.461 (41-89), Trish Fleming (2000-01)
CAREER.....	.413 (229-555), Haley Seibert (2011-15)

### Free Throws Made

GAME....	22, Ashley Johnson vs North Dakota State (2/26/06)
SEASON.....	266, Lisa Miller, (1991-92)
CAREER.....	741, Lisa Miller, (1988-92)

### Free Throw Attempts

GAME.....	24, Lisa Miller at Wayne State (11/16/90)
SEASON.....	336, Lisa Miller, (1991-92)
CAREER.....	922, Lisa Miller, (1988-92)

### Free Throw Percentage (min. 9 att.)

GAME...	1.000 (14-of-14) Haley Seibert vs NKU (12/6/14)
.....	1.000 (14-of-14) Amanda Hyde vs Indiana (11/12/13)
.....	1.000 (14-of-14) Amanda Hyde vs Purdue (12/6/12)
.....	1.000 (14-of-14) Lisa Miller vs St. Joseph's (1/2/92)
.....	1.000 (14-of-14) Lisa Miller vs Tri-State (12/3/88)
SEASON.....	.914 (127-139), Haley Seibert (2014-15)
CAREER.....	.868 (315-363), Haley Seibert (2011-15)

### Rebounds

GAME.....	23, Vereba Bibbs vs UALR (11/28/03)
SEASON.....	280, Pam Edwards, (1991-92)
CAREER.....	937, Lisa Miller, (1988-92)

### Rebound Average

SEASON.....	10.9, Ann McCleneghen (1979-80)
CAREER.....	8.4, Lisa Miller (1988-92)

### Assists

GAME....	15, Wendy Recker vs Southern Indiana (1/28/95)
SEASON.....	197, Wendy Recker, (1994-95)
CAREER.....	419, Wendy Recker, (1993-96)

### Assists Average

SEASON.....	7.3, Wendy Recker (1994-95)
CAREER.....	5.1, Wendy Recker (1993-96)

### Blocks

GAME.....	8, Stephanie Rosado Indiana Tech (11/23/10)
SEASON.....	47, Stephanie Rosado, (2010-11)
CAREER.....	130, Jennie Newhard, (1992-96)

### Blocks Average

SEASON.....	1.6, Jennie Newhard (1993-94)
.....	1.6, Shalauna McMillan (1996-97)
CAREER.....	1.3, Jennie Newhard (1992-96)

### Steals

GAME..	10, Kayla Drake at South Dakota State (1/22/11)
SEASON.....	80, Sue Hendricks, (1980-81)
CAREER.....	249, Lindy Jones, (1992-96)

### Steals Average

SEASON.....	3.5, Sue Hendricks (1980-81)
CAREER.....	2.8, Laure Renninger (1982-84)

### Games Played

SEASON.....	31, Amanda Hyde (2010-11)
.....	31, Stephanie Rosado (2010-11)
.....	31, Erin Murphy (2010-11)
.....	31, Anne Boese (2010-11)
.....	31, Jordan Zuppe (2010-11)
CAREER.....	121, Jordan Zuppe (2007-11)

### Games Started

SEASON.....	31, Anne Boese (2010-11)
.....	31, Stephanie Rosado (2010-11)
.....	31, Jordan Zuppe (2010-11)
CAREER.....	118, Jordan Zuppe (2007-11)



THE LAST TIME PURDUE FORT WAYNE...  
IN THE RANKINGS

Was Ranked .....	No. 18, 3/7/1996
Played a Ranked (AP) Team .....	at No. 23 Michigan, 12/16/2017 (L, 77-45)
Defeated a Ranked (AP) Team .....	at No. 21 Michigan State, 12/1/2013 (W, 81-76)

CONSECUTIVE GAME STREAKS

Won 5+ Consecutive Games .....	Dec. 31, 2010 - Jan. 24, 2011 (6 straight)
Won 10+ Consecutive Games .....	Nov. 18, 1995 - Jan. 13, 1996 (14 straight)
Lost 5+ Consecutive Games .....	Jan. 30, 2019 - present (6 straight)
Lost 10+ Consecutive Games .....	Jan. 13, 2018- Mar. 3, 2018 (11 straight)

SCORING

Scored 20-24 points .....	Hannah Albrecht (21), at Omaha, 2/16/2019
Scored 25-29 points .....	Josie Fisher (28), at Western Illinois, 2/4/2016
Scored 30-39 points .....	Kamilah Carter (30), vs. North Dakota State, 2/27/2016
Scored ≥ 40 points .....	Amanda Hyde (41), at SIUE, 11/26/2013
Freshman Scored 25+ points .....	Josie Fisher (28), at Western Illinois, 2/4/2016
Came off the bench to score 20 .....	Jaelencia Williams (23), vs. Oral Roberts, 1/9/2019
Consecutive 25 point games .....	Amanda Hyde, (28), vs. Denver, 3/9/2014; (25), at UIC, 3/19/2014
Hit game-winning shot under :30 .....	Anna Lappenküper (FG/0.00.0) vs. Quincy, 11/25/2017
Four-point play .....	Courtney Ogle, 2-18, 2nd quarter, at IUPUI, 2/21/2016
Two players scored 20 points .....	Josie Fisher (28) and Kamilah Carter (22), at Western Illinois, 2/4/2016
Three players scored 20 points .....	vs. Omaha, 3/1/2014

.....	Haley Seibert (23), Ariana Simmons (22), Amanda Hyde (20)
None in double figures .....	at Western Michigan, 12/6/2016
One in double figures .....	Jaelencia Williams (16), vs. South Dakota, 2/2/2019
Two in double figures .....	Jaelencia Williams (23) and Sh'Toya Sanders (12), vs. Oral Roberts, 1/9/2019
Three in double figures .....	at South Dakota State, 2/20/2019
.....	Kierstyn Repp (16), Sh'Toya Sanders (14) and De'Jour Young (11)

Four in double figures .....	at Omaha, 2/16/2019
.....	Hannah Albrecht (21), De'Jour Young (10), Kierstyn Repp (10) and Sh'Toya Sanders (10)
Five in double figures .....	vs. IU Kokomo, 11/6/2018De'Jour Young (22),
.....	Sierra Bell (15), Sh'Toya Sanders (13), Kierstyn Repp (13) and Jaelencia Williams (10)

Six in double figures .....	vs. Loyola-Chicago, 11/12/2017; Hannah Albrecht (16), De'Jour Young (12),
.....	KeShyra McCarver (12), Kierstyn Repp (12), Anna Lappenküper (12) and Jaelencia Williams (11)

Scored ≥ 25 points/quarter .....	26, 1st quarter, vs. Goshen, 12/16/2018
Scored ≥ 50 points/half .....	50, 2nd half, vs. Eastern Illinois, 12/8/2017
Scored ≥ 100 points .....	101, vs. Indiana Tech, 12/1/2013
Scored ≥ 100 points/road game .....	112, at Indiana-South Bend, 1/9/2002
Scored ≥ 100 points/neutral site .....	106, vs. Western Illinois, 3/10/2013 (@ Souix Falls, S.D.)
Scored < 10 points/quarter .....	8, 3rd quarter, at Denver, 2/13/2019
Scored ≤ 20 points/half .....	18, 1st half, vs. Western Illinois, 2/6/2019
Scored ≤ 30 points/half .....	28, 1st half, at Omaha, 2/16/2019
Scored < 50 points/game .....	49, vs. South Dakota, 2/2/2019
Overcame 10-point deficit to win .....	10, vs. North Dakota State, 31-21 (4:48, 2nd), 2/11/2017
Overcame 15-point deficit to win .....	17, at IUPUI, 40-23 (19:17, 2nd), 12/23/2004
Won by 40 or more points .....	52, vs. Grace, 91-39, 11/16/15

FIELD GOAL SHOOTING

Shot ≥ 60%/quarter .....	.615 (8-of-13), 2nd quarter, at South Dakota State, 2/20/2019
Shot ≥ 70%/quarter .....	.714 (9-of-18), 2nd quarter, vs. Goshen, 12/16/2018
Shot ≥ 60%/half .....	.667 (20-of-30), 1st half, vs. Goshen, 12/16/2018
Shot ≥ 70%/half .....	.727 (16-of-22), 2nd half, vs. Eastern Illinois, 12/8/2017
Shot ≥ 60%/game .....	.708 (34-of-48), vs. Eastern Illinois, 12/8/2017
Shot ≥ 70%/game .....	.708 (34-of-48), vs. Eastern Illinois, 12/8/2017
Shot ≤ 20%/quarter .....	.182 (2-of-11), 3rd quarter, vs. South Dakota, 2/2/2019
Shot ≤ 20%/half .....	.194 (6-of-31), 1st half, at North Dakota State, 12/28/2018
Shot ≤ 30%/quarter .....	.294 (5-of-17), 1st quarter, at South Dakota State, 2/20/2019
Shot ≤ 30%/half .....	.217 (5-of-23), 2nd half, vs. South Dakota, 2/2/2019
Shot ≤ 30%/game .....	.241 (13-of-54), at Milwaukee, 12/1/2018
Shot ≤ 30%/game and won .....	.288 (15-of-52), vs. Oral Roberts, 2/17/2016
Shot ≥ 50%/game and lost .....	.532 (25-of-47), at South Dakota State, 2/8/2015

THREE-POINTERS

Made 6 .....	Kierstyn Repp (6), at Coastal Carolina, 12/4/2017
Made 7 .....	Kierstyn Repp (7), at North Dakota State, 1/20/2018
Made 8 .....	Anne Boese (8), vs. Butler, 11/20/2011
Made 9 .....	Jamie Holderman (9), vs. SIU-Edwardsville, 2/1/2001
Attempted ≥ 10 .....	Kierstyn Repp (12), vs. Western Illinois, 2/6/2019
Attempted ≥ 15 .....	Anne Boese (17), at Oral Roberts, 12/29/2010
Purdue Fort Wayne Made ≥ 15 .....	16, at Chicago State, 12/4/2014
Purdue Fort Wayne Did not make a three-pointer .....	at Western Michigan, 12/6/2016
Purdue Fort Wayne Attempted ≥ 30 .....	31, at Western Illinois, 1/19/2019
Purdue Fort Wayne Attempted ≥ 44 .....	48, vs. Bowling Green, 11/19/2004
Purdue Fort Wayne Shot 60% (min. 10 att.) .....	.600 (6-of-10), vs. Defiance, 11/12/2016

FREE THROWS

Made 10-of-10 or better .....	10-10, Josie Fisher, vs. North Dakota State, 2/27/2016
Purdue Fort Wayne Shot 90% (min. 10 att.) .....	.923 (12-of-13), at Oral Roberts, 1/30/2019
Purdue Fort Wayne Shot ≤ 50% .....	.500 (4-of-8), at South Dakota, 1/12/2019
Purdue Fort Wayne Made ≥ 40 .....	40 (attempted 48) vs. Southern Indiana, 2/6/1992
Purdue Fort Wayne Made ≤ 5 FTs .....	2 (attempted 3), at Western Illinois, 1/19/2019
Purdue Fort Wayne Attempted ≥ 50 FTs .....	52 (made 42), vs. Northern Kentucky, 12/21/1995
Purdue Fort Wayne Attempted ≤ 5 FTs .....	2 (made 3), at Western Illinois, 1/19/2019

MINUTES PLAYED

Played every minute .....	40, Kierstyn Repp, vs. Eastern Michigan, 12/8/2018
Two or more played every minute .....	at Loyola-Chicago, 11/29/2018
.....	40, Hannah Albrecht and De'Jour Young

REBOUNDS

Had ≥ 10 rebounds .....	Sh'Toya Sanders (12) and De'Jour Young (10), at Omaha, 2/16/2019
Two Players Had ≥ 10 rebounds .....	vs. USC Upstate, 11/21/2015
.....	Courtney Ogle (10) and De'Jour Young (10)
Three Players Had ≥ 10 rebounds .....	at Saint Joseph's (IN), 2/9/1999
.....	Angie Womack (12), Katie Bruening (12), and Laura Douglas (10)
Had ≥ 15 rebounds .....	Keanna Gary (16), at Denver, 1/9/2016
Had ≥ 20 rebounds .....	Verea Bibbs (23), vs. UALR, 11/28/2003
Had 10 rebounds in consecutive games .....	Sh'Toya Sanders
.....	(11), vs. Omaha, 1/24/2019 and (12) vs. Denver, 1/26/2019
Had 10 rebounds in three consecutive games .....	Keanna Gary
.....	(16) vs. Western Illinois, 1/7/2016; (16), at Denver, 1/9/2016; and (11) vs. South Dakota State, 1/13/2016
Had 10 rebounds in four consecutive games .....	Keanna Gary
.....	(10), vs. IUPUI, 1/1/2016; (16), vs. Western Illinois, 1/7/2016;
.....	(16), at Denver, 1/9/2016; and (11) vs. South Dakota State, 1/13/2016
Had 10 rebounds in five consecutive games .....	Lisa Miller
.....	(13) at Kentucky Wesleyan, 2/18/1989; (10) vs. Northern Kentucky, 2/23/1989;
.....	(13) vs. Ashland, 2/25/1989; (16) vs. Wayne State, 2/28/1989; and (12) vs. Taylor, 11/17/1989
Purdue Fort Wayne had ≥ 50 rebounds .....	55, at Western Illinois, 1/19/2019
Purdue Fort Wayne had ≥ 60 rebounds .....	65, vs. Shippensburg, 11/19/1995

DOUBLE-DOUBLES

Last Player .....	Sh'Toya Sanders (10 pts/12 rbs) and De'Jour Young (10pts/10rbs) at Omaha, 2/16/2019
Freshman .....	KeShyra McCarver (22 pts/14 rbs), at Illinois, 11/14/2014
Points & Assists .....	Sh'Toya Sanders (10 pts/12 rbs) and De'Jour Young (10pts/10rbs) at Omaha, 2/16/2019
Points & Rebounds .....	Maggie Bruening (12 pts/10 ast), vs. Morehead State, 1/5/2004
Points & Steals .....	Kayla Drake (27 pts/10 stl), at South Dakota State, 1/22/2011
Rebounds & Assists .....	Lindsay Wertz (10 rbs/10 ast), at Quincy, 2/17/2001
Double-double in consecutive games .....	Keanna Gary
.....	(10 pts/10 rbs), vs. IUPUI, 1/1/2016; (10 pts/16 rbs), vs. Western Illinois, 1/7/2016
Double-double in three consecutive games .....	Stephanie Rosado
.....	(14 pts/10 rbs), vs. Akron, 11/15/2010; (22 pts/12 rbs), at Youngstown State, 11/20/2010;
.....	(31 pts/13 rbs), vs. Indiana Tech, 11/23/2010
Double-double in four consecutive games .....	Sarah Turner
.....	(16 pts/11 rbs), vs. Ashland, 1/4/1988; (22 pts/13 rbs), vs. Lewis, 1/9/1988;
.....	(15 pts/10 rbs), vs. Huntington 1/16/1988; (17 pts/10 rbs), vs. Kentucky Wesleyan, 1/21/1988
Two players had double-doubles .....	at Omaha, 2/16/2019
.....	De'Jour Young (10 pts/10 rbs) and Sh'Toya Sanders (10 pts/12 rbs)

Three players had double-doubles .....	vs. Taylor, 11/17/1989 (@ Huntington, Ind.)
.....	Lisa Miller (20 pts/12 rbs), Robin Scott (14 pts/10 rbs), and Pam Edwards (11 pts/11 rbs)
30 points and 10 rebounds .....	Amanda Hyde (35 pts/10 rbs), at North Dakota State, 1/9/2014
20 points and 15 rebounds .....	Jaelencia Williams (23 pts/15 rbs), vs. Oral Roberts, 1/9/2019
30 points and 15 rebounds .....	Pam Edwards (31 pts/18 rbs), vs. Ashland, 1/25/1992

ASSISTS

Had ≥ 8 assists .....	Sierra Bell (9), vs. Oral Roberts, 1/9/2019
Had ≥ 9 assists .....	Sierra Bell (9), vs. Oral Roberts, 1/9/2019
Had ≥ 10 assists .....	Jordan Zuppe (11), vs. Oral Roberts, 1/29/2011
Had ≥ 15 assists .....	Wendy Recker (15), vs. Southern Indiana, 1/28/1995
Had 10 assists in consecutive games .....	Maggie Bruening
.....	(10), vs. Morehead State, 1/5/2004; (10), vs. Air Force, 1/7/2004
Purdue Fort Wayne had 20-24 assists .....	20, vs. Kent State, 11/19/2015
Purdue Fort Wayne had 25-29 assists .....	28, vs. Kalamazoo, 12/2/2005
Purdue Fort Wayne had ≥ 30 assists .....	31, vs. Southern Indiana, 2/7/1991
Purdue Fort Wayne had ≤ 5 assists .....	5, vs. South Dakota State, 2/24/2018

BLOCKED SHOTS

Blocked 5-6 shots .....	Sh'Toya Sanders (5), at Western Illinois, 1/19/2019
Blocked ≥ 7 shots .....	Jaelencia Williams (7), vs. Denver, 1/26/2019
Purdue Fort Wayne blocked ≥ 10 shots .....	10, vs. Oral Roberts, 1/9/2019

STEALS

Had 5 steals .....	Rachel Rinehart vs. Western Illinois, 12/28/2016
Had 6 steals .....	De'Jour Young vs. Western Illinois, 2/6/2019
Had 7 steals .....	Haley Seibert at North Dakota State, 1/17/2015
Had ≥ 8 steals .....	Sierra Bell (8), vs. IU Kokomo, 11/6/2018
Two Players Had ≥ 5 steals .....	at Milwaukee, 12/28/2015
.....	Rachel Rinehart (6) and Josie Fisher (5)
Had 5 steals in consecutive games .....	Kayla Drake
.....	(10), at South Dakota State, 1/22/2011; (6), at North Dakota State, 1/24/2011
Purdue Fort Wayne had ≥ 20 steals .....	21, at Milwaukee, 12/28/2015

TURNOVERS

Committed ≥ 20 turnovers .....	24, at Denver, 2/13/2019
Committed ≥ 25 turnovers .....	26, at Eastern Illinois, 11/15/2018
Committed ≤ 5 turnovers .....	5, at Western Illinois, 2/4/2016
Committed < 10 turnovers .....	9, at Denver, 2/4/2017

OVERTIME

Played an OT game .....	at Coastal Carolina (L, 64-58), 12/4/2017
Played multiple overtimes .....	at North Dakota State (W, 98-89, 2ot), 1/9/2014
Won an OT game .....	at North Dakota State (W, 98-89, 2ot), 1/9/2014
Won in multiple overtimes .....	at North Dakota State (W, 98-89, 2ot), 1/9/2014
Won an OT game at home .....	vs. UMKC (W, 82-76), 12/3/2011
Won an OT game at neutral site .....	vs. Western Illinois (W, 106-101, 2ot), 3/10/2013
Won an OT game on the road .....	at North Dakota State (W, 98-89, 2ot), 1/9/2014
Lost an OT game .....	at Coastal Carolina (L, 64-58), 12/4/2017
Lost in multiple overtimes .....	at Hampton (L, 78-77, 2ot), 12/19/2010
Lost an OT game at home .....	vs. Detroit (L, 81-74), 12/2/2014
Lost an OT game on the road .....	at Coastal Carolina (L, 64-58), 12/4/2017







SEASON HIGH	CATEGORY	CAREER HIGH
30, vs. Eastern Michigan, 12/8/2018	Minutes	30, vs. Eastern Michigan, 12/8/2018
23, vs. Oral Roberts, 1/9/2019	Points	23, vs. Oral Roberts, 1/9/2019
15, vs. Oral Roberts, 1/9/2019	Rebounds	15, vs. Oral Roberts, 1/9/2019
3, at Milwaukee, 12/1/2018	Assists	3, two times
1, three times	Steals	2, at Belmont, 12/16/2017
7, vs. Denver, 1/26/2019	Blocks	7, vs. Denver, 1/26/2019
9, vs. Oral Roberts, 1/9/2019	FG Made	9, vs. Oral Roberts, 1/9/2019
14, two times	FG Attempts	14, three times
—	3-PT Made	1, two times
—	3-PT Attempts	1, three times
9, vs. Eastern Michigan, 12/8/2018	FT Made	9, vs. Eastern Michigan, 12/8/2018
12, vs. Eastern Michigan, 12/8/2018	FT Attempts	12, vs. Eastern Michigan, 12/8/2018

## CAREER NOTES

- Majoring in Visual Communication Design

## PRIOR TO FORT WAYNE

- Led her team in scoring with 15.7 points, 9.3 rebounds and 1.9 blocks per game
- Was an All-Conference Indiana First-Team selection
- Named to the Indiana Basketball Coaches Association Large School All-State Team

## ABOUT INDIANAPOLIS, INDIANA

- Is the capital and largest city of the state of Indiana, founded in 1821
- Home of the NFL's Indianapolis Colts and NBA's Indiana Pacers
- The long list of notable people from greater Indianapolis include: Jane Pauley, Brendan Fraser, Steve McQueen, Gordon Hayward, Oscar Robertson, John Wooden and David Letterman

## ABOUT SOUTHPORT HIGH SCHOOL

- Nickname is the Cardinals
- Notable alumni include former ABA and Naismith Memorial Basketball Hall of Famer Louie Dampier, former MLB player Chuck Klein, soap opera star Terry Lester, and current outfielder for the Philadelphia Phillies Cameron Perkins

## CAREER VS. NORTH DAKOTA

Season	gp-gs	min/avg	Total fg-fga	pct	3-Point fg-fga	pct	F-Throws ft-fga	pct	Rebounds off	def	tot	avg	pf	fo	ast	to	blk	stl	Scoring pts	avg
2018-19	1-0	16/16.0	5-9	.556	0-0	.000	0-0	.000	2	3	5	5.0	1	0	0	1	1	0	10	10.0
TOTAL	1-0	16/16.0	5-9	.556	0-0	.000	0-0	.000	2	3	5	5.0	1	0	0	1	1	0	10	10.0

SINGLE-GAME HIGHS [all-time ranking]:  
 Points: 10, at North Dakota -- 12/30/18  
 Rebounds: 5, at North Dakota -- 12/30/18  
 Blocks: 1, at North Dakota -- 12/30/18  
 FG made: 5, at North Dakota -- 12/30/18  
 FG attempts: 9, at North Dakota -- 12/30/18

## SEASON STATS

Opponent	Date	gs	min	Total fg-fga	pct	3-Pointers 3fg-fga	pct	Free throws ft-fga	pct	Rebounds				pf	a	t/o	blk	stl	pts	avg
IU KOKOMO	11/06/18		15	5-8	.625	0-0	.000	0-3	.000	1	3	4	4.0	1	0	2	1	0	10	10.0
at Western Michigan	11/08/18		12	3-8	.375	0-0	.000	3-4	.750	2	1	3	3.5	2	0	2	0	1	9	9.5
TAYLOR (IN)	11/12/18		23	5-5	1.000	0-0	.000	2-4	.500	4	1	5	4.0	2	0	1	3	0	12	10.3
at Eastern Illinois	11/15/18		16	3-4	.750	0-0	.000	1-3	.333	1	6	7	4.8	2	0	3	2	0	7	9.5
at Purdue	11/18/18	*	20	2-4	.500	0-0	.000	1-6	.167	0	2	2	4.2	4	0	2	1	0	5	8.6
at Evansville	11/20/18		16	2-4	.500	0-0	.000	3-8	.375	2	1	3	4.0	1	0	1	1	0	7	8.3
SIUE	11/24/18		15	2-3	.667	0-0	.000	4-5	.800	0	1	1	3.6	3	0	0	1	0	8	8.3
at Loyola-Chicago	11/29/18	*	9	2-4	.500	0-0	.000	0-0	.000	0	2	2	3.4	2	0	2	0	0	4	7.8
at Milwaukee	12/01/18		28	2-10	.200	0-0	.000	4-8	.500	4	4	8	3.9	4	3	4	2	1	8	7.8
EASTERN MICHIGAN	12/08/18	*	30	6-12	.500	0-0	.000	9-12	.750	3	3	6	4.1	3	1	1	0	0	21	9.1
GOSHEN	12/16/18	*	24	5-8	.625	0-0	.000	3-4	.750	3	6	9	4.5	3	1	7	5	0	13	9.5
VALPARAISO	12/19/18	*	26	6-6	1.000	0-0	.000	3-7	.429	7	1	8	4.8	4	0	1	0	1	15	9.9
at North Dakota State	12/28/18	*	11	0-5	.000	0-0	.000	0-0	.000	1	3	4	4.8	2	0	0	0	0	0	9.2
at North Dakota	12/30/18		16	5-9	.556	0-0	.000	0-0	.000	2	3	5	4.8	1	0	1	1	0	10	9.2
SOUTH DAKOTA STATE	01/03/19		16	3-5	.600	0-0	.000	0-2	.000	2	5	7	4.9	4	0	3	0	0	6	9.0
ORAL ROBERTS	01/09/19		27	9-14	.643	0-0	.000	5-8	.625	4	11	15	5.6	4	2	6	4	0	23	9.9
at South Dakota	01/12/19		15	2-4	.500	0-0	.000	0-3	.000	1	4	5	5.5	4	0	1	1	0	4	9.5
at Western Illinois	01/19/19		13	4-7	.571	0-0	.000	1-1	1.000	5	0	5	5.5	1	0	0	0	0	9	9.5
OMAHA	01/24/19		18	4-7	.571	0-0	.000	1-2	.500	1	4	5	5.5	3	0	1	0	0	9	9.5
DENVER	01/26/19		17	2-7	.286	0-0	.000	0-0	.000	0	4	4	5.4	3	1	2	7	1	4	9.2
at Oral Roberts	01/30/19		24	3-6	.500	0-0	.000	6-6	1.000	1	4	5	5.4	3	0	1	1	0	12	9.3
SOUTH DAKOTA	02/02/19		29	5-14	.357	0-2	.000	6-8	.750	3	3	6	5.4	1	0	0	2	0	16	9.6
WESTERN ILLINOIS	02/06/19		10	1-5	.200	0-0	.000	0-2	.000	3	0	3	5.3	3	0	2	1	0	2	9.3
at Denver	02/13/19		16	1-3	.333	0-0	.000	2-4	.500	1	3	4	5.3	3	0	3	1	0	4	9.1
at Omaha	02/16/19		10	2-6	.333	0-0	.000	0-0	.000	1	0	1	5.1	3	0	2	1	0	4	8.9
at South Dakota State	02/20/19	*	16	2-6	.333	0-0	.000	2-4	.500	2	3	5	5.1	3	0	1	3	0	6	8.8
Totals		7	472	86-174	.494	0-2	.000	56-104	.538	54	78	132	5.1	69	8	49	38	4	228	8.8

Games played: 26  
 Minutes/game: 18.2  
 Points/game: 8.8  
 FG Pct: 49.4  
 3FG Pct: 0.0  
 FT Pct: 53.8

Rebounds/game: 5.1  
 Assists/game: 0.3  
 Turnovers/game: 1.9  
 Assist/turnover ratio: 0.2  
 Steals/game: 0.2  
 Blocks/game: 1.5

## CAREER STATS

Season	gp-gs	min/avg	Total fg-fga	pct	3-Point fg-fga	pct	F-Throws ft-fga	pct	Rebounds off	def	tot	avg	pf	fo	ast	to	blk	stl	Scoring pts	avg
2017-18	28-15	518/18.5	91-190	.479	2-3	.667	45-66	.682	60	77	137	4.9	48	0	10	44	26	7	229	8.2
2018-19	26-7	472/18.2	86-174	.494	0-2	.000	56-104	.538	54	78	132	5.1	69	0	8	49	38	4	228	8.8
TOTAL	54-22	990/18.3	177-364	.486	2-5	.400	101-170	.594	114	155	269	5.0	117	0	18	93	64	11	457	8.5



3

SIERRA BELL

Junior | 5-7

Danville, Ill.

Schlarman Academy

Northeast Community College

GUARD

SEASON HIGH	CATEGORY	CAREER HIGH
30, vs. Oral Roberts, 1/9/2019	Minutes	30, vs. Oral Roberts, 1/9/2019
15, vs. IU Kokomo, 11/6/2018	Points	15, vs. IU Kokomo, 11/6/2018
8, vs. IU Kokomo, 11/6/2018	Rebounds	8, vs. IU Kokomo, 11/6/2018
9, vs. Oral Roberts, 1/9/2019	Assists	9, vs. Oral Roberts, 1/9/2019
8, vs. IU Kokomo, 11/6/2018	Steals	8, vs. IU Kokomo, 11/6/2018
1, two times	Blocks	1, two times
5, vs. IU Kokomo, 11/6/2018	FG Made	5, vs. IU Kokomo, 11/6/2018
10, at Western Michigan, 11/8/2018	FG Attempts	10, at Western Michigan, 11/8/2018
2, two times	3-PT Made	2, two times
6, vs. South Dakota, 2/2/2019	3-PT Attempts	6, vs. South Dakota, 2/2/2019
7, two times	FT Made	7, two times
10, vs. South Dakota State, 1/3/2019	FT Attempts	10, vs. South Dakota State, 1/3/2019

## CAREER NOTES

- Transferred in for the 2018-19 season
- Majoring in Criminal Justice

## PRIOR TO FORT WAYNE

- Played at Northeast Community College in Norfolk, Nebraska for two seasons
- In 2017-18, led the team in assists (3.3 per game) and steals (1.9 per game). Averaged 10.7 points per game
- Named to the Iowa Community College Athletic Conference's (ICCAC) 2017-18 Division I All-Region First Team

## CAREER VS. NORTH DAKOTA

Season	gp-gs	min/avg	Total fg-fga	pct	3-Point fg-fga	pct	F-Throws ft-fta	pct	off	def	tot	avg	pf	fo	ast	to	blk	stl	Scoring pts	avg
2018-19	1-0	8/8.0	1-5	.200	0-1	.000	4-4	1.000	0	1	1	1.0	2	0	1	3	0	1	6	6.0
TOTAL	1-0	8/8.0	1-5	.200	0-1	.000	4-4	1.000	0	1	1	1.0	2	0	1	3	0	1	6	6.0

SINGLE-GAME HIGHS [all-time ranking]:

Points: 6, at North Dakota -- 12/30/18  
Rebounds: 1, at North Dakota -- 12/30/18  
Assists: 1, at North Dakota -- 12/30/18  
Steals: 1, at North Dakota -- 12/30/18  
FG made: 1, at North Dakota -- 12/30/18  
FG attempts: 5, at North Dakota -- 12/30/18  
3FG attempts: 1, at North Dakota -- 12/30/18  
FT made: 4, at North Dakota -- 12/30/18

FT attempts: 4, at North Dakota -- 12/30/18

## SEASON STATS

Opponent	Date	gs	min	Total		3-Pointers		Free throws		Rebounds										
				fg-fga	pct	3fg-fga	pct	ft-fta	pct	off	def	tot	avg	pf	a	t/o	blk	stl	pts	avg
IU KOKOMO	11/06/18		22	5-8	.625	1-1	1.000	4-4	1.000	3	5	8	8.0	3	5	6	0	8	15	15.0
at Western Michigan	11/08/18		21	4-10	.400	0-2	.000	0-0	.000	0	5	5	6.5	3	3	1	0	2	8	11.5
TAYLOR (IN)	11/12/18		13	1-8	.125	0-3	.000	2-2	1.000	0	2	2	5.0	4	2	1	0	1	4	9.0
at Purdue Illinois	11/15/18		13	3-5	.600	2-3	.667	0-0	.000	1	1	2	4.3	2	1	2	0	0	8	8.8
at Purdue	11/18/18		13	0-3	.000	0-1	.000	1-2	.500	0	0	0	3.4	2	1	1	0	0	1	7.2
at Evansville	11/20/18		6	0-0	.000	0-0	.000	0-0	.000	0	2	2	3.2	0	0	1	1	0	0	6.0
SIUE	11/24/18		16	2-5	.400	0-1	.000	4-5	.800	1	4	5	3.4	2	3	2	0	0	8	6.3
at Loyola-Chicago	11/29/18		18	3-9	.333	0-0	.000	1-3	.333	1	0	1	3.1	4	3	2	1	2	7	6.4
at Milwaukee	12/01/18		dnp	-	-	-	-	-	-	-	-	-	-	-	-	-	-	-	-	-
EASTERN MICHIGAN	12/08/18		dnp	-	-	-	-	-	-	-	-	-	-	-	-	-	-	-	-	-
GOSHEN	12/16/18		dnp	-	-	-	-	-	-	-	-	-	-	-	-	-	-	-	-	-
VALPARAISO	12/19/18		dnp	-	-	-	-	-	-	-	-	-	-	-	-	-	-	-	-	-
at North Dakota State	12/28/18		11	1-5	.200	0-0	.000	0-0	.000	0	3	3	3.1	2	0	2	0	0	2	5.9
at North Dakota	12/30/18		8	1-5	.200	0-1	.000	4-4	1.000	0	1	1	2.9	2	1	3	0	1	6	5.9
SOUTH DAKOTA STATE	01/03/19		25	2-3	.667	0-1	.000	7-10	.700	1	1	2	2.8	4	3	2	0	0	11	6.4
ORAL ROBERTS	01/09/19		30	1-6	.167	0-1	.000	7-7	1.000	2	3	5	3.0	5	9	4	0	0	9	6.6
at South Dakota	01/12/19		27	4-5	.800	1-1	1.000	0-0	.000	0	4	4	3.1	2	3	3	0	1	9	6.8
at Western Illinois	01/19/19		15	0-5	.000	0-2	.000	0-0	.000	3	2	5	3.2	0	2	1	0	0	0	6.3
OMAHA	01/24/19		12	1-5	.200	0-0	.000	5-6	.833	0	0	0	3.0	3	2	2	0	2	7	6.3
DENVER	01/26/19		17	2-6	.333	0-2	.000	2-2	1.000	1	0	1	2.9	5	3	5	0	1	6	6.3
at Oral Roberts	01/30/19		18	3-6	.500	1-2	.500	2-2	1.000	0	2	2	2.8	3	0	3	0	0	9	6.5
SOUTH DAKOTA	02/02/19		25	2-7	.286	2-6	.333	2-2	1.000	0	6	6	3.0	0	6	10	0	0	8	6.6
WESTERN ILLINOIS	02/06/19		17	1-5	.200	0-2	.000	0-0	.000	1	0	1	2.9	5	2	1	0	1	2	6.3
at Denver	02/13/19		14	1-1	1.000	0-0	.000	0-0	.000	0	2	2	2.9	2	3	5	0	0	2	6.1
at Omaha	02/16/19		13	1-6	.167	1-3	.333	0-0	.000	0	2	2	2.8	3	1	2	0	0	3	6.0
at South Dakota State	02/20/19		dnp	-	-	-	-	-	-	-	-	-	-	-	-	-	-	-	-	-
Totals		0	354	38-113	.336	8-32	.250	41-49	.837	14	45	59	2.8	56	53	59	2	19	125	6.0

Games played: 21  
Minutes/game: 16.9  
Points/game: 6.0  
FG Pct: 33.6  
3FG Pct: 25.0  
FT Pct: 83.7

Rebounds/game: 2.8  
Assists/game: 2.5  
Turnovers/game: 2.8  
Assist/turnover ratio: 0.9  
Steals/game: 0.9  
Blocks/game: 0.1

## CAREER STATS

Season	gp-gs	min/avg	Total fg-fga	pct	3-Point fg-fga	pct	F-Throws ft-fta	pct	off	def	tot	avg	pf	fo	ast	to	blk	stl	Scoring pts	avg
2018-19	21-0	354/16.9	38-113	.336	8-32	.250	41-49	.837	14	45	59	2.8	56	3	53	59	2	19	125	6.0
TOTAL	21-0	354/16.9	38-113	.336	8-32	.250	41-49	.837	14	45	59	2.8	56	3	53	59	2	19	125	6.0



ELLIE  
**DYKSTRA**

Freshman | 6-1  
 Byron Center Mich.  
 Byron Center

**FORWARD**

4

## CAREER NOTES

- Majoring in Business
- Uncle Jeff played football at Western Michigan for four years, other uncle Todd played football for four seasons at Saginaw Valley State, brother Mitchell played baseball at Muskegon Community College.

## PRIOR TO FORT WAYNE

- Three-time Class A All-Ottawa-Kent Conference selection
- Three-time All-Area honoree
- Named a Basketball Coaches Association of Michigan Class A Honorable Mention her last two seasons
- Averaged 13.9 points, 6.0 rebounds, 4.4 assists and 3.2 steals her junior year.

## CAREER VS. NORTH DAKOTA

Season	gp-gs	min/avg	Total		3-Point		F-Throws		Rebounds				Scoring						
			fg-fga	pct	fg-fga	pct	ft-fa	pct	off	def	tot	avg	pf	fo	ast	to	blk	stl	pts
2018-19	1-0	6/6.0	0-0	.000	0-0	.000	0-0	.000	0	0	0	0.0	1	0	0	0	0	0	0
TOTAL	1-0	6/6.0	0-0	.000	0-0	.000	0-0	.000	0	0	0	0.0	1	0	0	0	0	0	0

SINGLE-GAME HIGHS [all-time ranking]:

## SEASON STATS

Opponent	Date	gs	min	Total		3-Pointers		Free throws		Rebounds				pf	a	t/o	blk	stl	pts	avg
				fg-fga	pct	3fg-fga	pct	ft-fa	pct	off	def	tot	avg							
IU KOKOMO	11/06/18	17	1-1	1.000	0-0	.000	0-0	.000	.000	2	5	7	7.0	0	0	2	2	0	2	2.0
at Western Michigan	11/08/18	2	0-0	.000	0-0	.000	0-0	.000	.000	0	1	1	4.0	1	1	1	0	0	0	1.0
TAYLOR (IN)	11/12/18	2	0-0	.000	0-0	.000	0-0	.000	1-2	.500	1	2	3.3	2	0	0	0	0	1	1.0
at Eastern Illinois	11/15/18	1	0-0	.000	0-0	.000	0-0	.000	0-0	.000	0	0	0	2.5	1	0	1	0	0	0.8
at Purdue	11/18/18	7	0-1	.000	0-0	.000	0-0	.000	0-0	.000	0	0	0	2.0	0	0	0	1	0	0.6
at Evansville	11/20/18	1	0-0	.000	0-0	.000	0-0	.000	0-0	.000	0	0	0	1.7	0	0	0	0	0	0.5
SIUE	11/24/18	dnp	-	-	-	-	-	-	-	-	-	-	-	-	-	-	-	-	-	-
at Loyola-Chicago	11/29/18	11	1-3	.333	0-0	.000	0-0	.000	0-0	.000	0	0	0	1.4	1	0	0	0	2	0.7
at Milwaukee	12/01/18	5	0-1	.000	0-1	.000	0-0	.000	0-0	.000	0	0	0	1.3	1	0	0	0	0	0.6
EASTERN MICHIGAN	12/08/18	10	3-4	.750	0-0	.000	0-0	.000	0-0	.000	0	1	1	1.2	0	0	0	0	6	1.2
GOSHEN	12/16/18	19	2-2	1.000	0-0	.000	0-0	.000	0-0	.000	1	1	2	1.3	4	0	0	1	4	1.5
VALPARAISO	12/19/18	2	1-1	1.000	0-0	.000	0-0	.000	0-0	.000	0	0	0	1.2	2	0	0	0	2	1.5
at North Dakota State	12/28/18	6	1-3	.333	0-1	.000	0-0	.000	0-0	.000	1	0	1	1.2	0	0	1	0	0	1.6
at North Dakota	12/30/18	6	0-0	.000	0-0	.000	0-0	.000	0-0	.000	0	0	0	1.1	1	0	0	0	0	1.5
SOUTH DAKOTA STATE	01/03/19	11	0-3	.000	0-0	.000	1-2	.500	1	0	1	1	1.1	2	0	1	0	2	1	1.4
ORAL ROBERTS	01/09/19	14	0-2	.000	0-0	.000	0-0	.000	0-0	.000	0	1	1	1.1	0	0	1	1	0	1.3
at South Dakota	01/12/19	6	0-1	.000	0-0	.000	0-0	.000	1	0	1	1	1.1	1	0	0	0	0	0	1.3
at Western Illinois	01/19/19	5	0-0	.000	0-0	.000	0-0	.000	1	0	1	1	1.1	2	0	1	1	0	0	1.2
OMAHA	01/24/19	dnp	-	-	-	-	-	-	-	-	-	-	-	-	-	-	-	-	-	-
DENVER	01/26/19	1	0-0	.000	0-0	.000	0-0	.000	0	0	0	0	1.0	0	0	0	0	0	0	1.1
at Oral Roberts	01/30/19	dnp	-	-	-	-	-	-	-	-	-	-	-	-	-	-	-	-	-	-
SOUTH DAKOTA	02/02/19	1	0-0	.000	0-0	.000	0-0	.000	0	0	0	0	0.9	0	0	0	0	0	0	1.1
WESTERN ILLINOIS	02/06/19	4	0-0	.000	0-0	.000	0-0	.000	0	1	1	1	1.0	0	0	1	0	0	0	1.0
at Denver	02/13/19	5	0-2	.000	0-0	.000	0-0	.000	1	0	1	1	1.0	1	0	1	1	0	0	1.0
at Omaha	02/16/19	dnp	-	-	-	-	-	-	-	-	-	-	-	-	-	-	-	-	-	-
at South Dakota State	02/20/19	12	2-2	1.000	0-0	.000	1-2	.500	0	2	2	2	1.0	0	0	0	0	0	5	1.1
Totals		1	148	11-26	.423	0-2	.000	3-6	.500	9	13	22	1.0	19	1	10	6	4	25	1.1

Games played: 22  
Minutes/game: 6.7  
Points/game: 1.1  
FG Pct: 42.3  
3FG Pct: 0.0  
FT Pct: 50.0

Rebounds/game: 1.0  
Assists/game: 0.0  
Turnovers/game: 0.5  
Assist/turnover ratio: 0.1  
Steals/game: 0.2  
Blocks/game: 0.3

## CAREER STATS

			Total		3-Point		F-Throws		Rebounds										Scoring	
Season	gp-gs	min/avg	fg-fga	pct	fg-fga	pct	ft-fa	pct	off	def	tot	avg	pf	fo	ast	to	blk	stl	pts	avg
2018-19	22-1	148/6.7	11-26	.423	0-2	.000	3-6	.500	9	13	22	1.0	19	0	1	10	6	4	25	1.1
TOTAL	22-1	148/6.7	11-26	.423	0-2	.000	3-6	.500	9	13	22	1.0	19	0	1	10	6	4	25	1.1

SEASON HIGH	CATEGORY	CAREER HIGH
19, vs. Goshen, 12/16/2018.....	Minutes.....	19, vs. Goshen, 12/16/2018
6, vs. Eastern Michigan, 12/8/2018.....	Points.....	6, vs. Eastern Michigan, 12/8/2018
7, vs. IU Kokomo, 11/6/2018.....	Rebounds.....	7, vs. IU Kokomo, 11/6/2018
1, at Western Michigan, 11/8/2018.....	Assists.....	1, at Western Michigan, 11/8/2018
2, vs. South Dakota State, 1/3/2019.....	Steals.....	2, vs. South Dakota State, 1/3/2019
2, vs. IU Kokomo, 11/6/2018.....	Blocks.....	2, vs. IU Kokomo, 11/6/2018
3, vs. Eastern Michigan, 12/8/2018.....	FG Made.....	3, vs. Eastern Michigan, 12/8/2018
4, vs. Eastern Michigan, 12/8/2018.....	FG Attempts.....	4, vs. Eastern Michigan, 12/8/2018
.....	3-PT Made.....	.....
1, at Milwaukee, 12/1/2018.....	3-PT Attempts.....	1, at Milwaukee, 12/1/2018
1, three times.....	FT Made.....	1, three times
2, three times.....	FT Attempts.....	2, three times

## ABOUT BYRON CENTER, MICHIGAN

- Population of 5,822
- Located about 14 miles south-southwest of Grand Rapids.

## ABOUT BYRON CENTER HIGH SCHOOL

- Nickname is the Bulldogs





5

HANNAH

HESS

R-Sophomore | 5-10

Oregon, Ohio

Clay

GUARD

SEASON HIGH	CATEGORY	CAREER HIGH
37, vs. Taylor, 11/12/2018.....	Minutes.....	37, vs. Taylor, 11/12/2018
16, vs. Taylor, 11/12/2018.....	Points.....	16, vs. Taylor, 11/12/2018
7, three times.....	Rebounds.....	7, three times
7, at Eastern Illinois, 11/15/2018.....	Assists.....	7, at Eastern Illinois, 11/15/2018
3, vs. Taylor, 11/12/2018.....	Steals.....	3, vs. Taylor, 11/12/2018
1, two times.....	Blocks.....	1, three times
6, vs. Taylor, 11/12/2018.....	FG Made.....	6, vs. Taylor, 11/12/2018
11, vs. Taylor, 11/12/2018.....	FG Attempts.....	14, vs. Western Illinois, 12/30/2017
4, vs. Taylor, 11/12/2018.....	3-PT Made.....	4, vs. Taylor, 11/12/2018
8, vs. Taylor, 11/12/2018.....	3-PT Attempts.....	10, vs. Western Illinois, 12/30/2017
3, vs. Eastern Michigan, 12/8/2018.....	FT Made.....	3, two time
3, vs. Eastern Michigan, 12/8/2018.....	FT Attempts.....	3, two times

## CAREER NOTES

- Missed the 2016-17 season due to injury, used a reshirt season
- Majoring in Biology

## PRIOR TO FORT WAYNE

- Named to the 2015-16 Division I All-Ohio First Team
- Averaged 16.0 points and 4.0 rebounds per game as a senior
- Was a two-time First Team All-Three Rivers Athletic Conference and First Team All-District selection
- Named the District 7 Player of the Year in her final season at Clay

## CAREER VS. NORTH DAKOTA

Season	gp-gs	min/avg	Total		3-Point		F-Throws			Rebounds			Scoring						
			fg-fga	pct	fg-fga	pct	ft-fga	pct		off	def	tot	avg	pts	pts	avg			
2018-19	1-0	13/13.0	0-3	.000	0-2	.000	2-2	1.000		0	2	2	2.0	0	0	2	3	0	1
TOTAL	1-0	13/13.0	0-3	.000	0-2	.000	2-2	1.000		0	2	2	2.0	0	0	2	3	0	1

SINGLE-GAME HIGHS [all-time ranking]:

Points: 2, at North Dakota -- 12/30/18

Rebounds: 2, at North Dakota -- 12/30/18

Assists: 2, at North Dakota -- 12/30/18

Steals: 1, at North Dakota -- 12/30/18

FG attempts: 3, at North Dakota -- 12/30/18

3FG attempts: 2, at North Dakota -- 12/30/18

FT made: 2, at North Dakota -- 12/30/18

FT attempts: 2, at North Dakota -- 12/30/18

## SEASON STATS

Opponent	Date	gs	min	Total		3-Pointers		Free throws		Rebounds			pf	a	t/o	blk	stl	pts	avg		
				fg-fga	pct	3fg-fga	pct	ft-fga	pct	off	def	tot								avg	
IU KOKOMO	11/06/18		13	1-3	.333	0-1	.000	0-0	.000	0	1	1	1.0	3	1	1	0	1	2	2.0	
at Western Michigan	11/08/18		22	4-7	.571	1-2	.500	0-0	.000	0	2	2	1.5	1	0	0	0	1	9	5.5	
TAYLOR (IN)	11/12/18		37	6-11	.545	4-8	.500	0-0	.000	1	6	7	3.3	2	3	3	1	3	16	9.0	
at Eastern Illinois	11/15/18		31	3-6	.500	2-5	.400	0-0	.000	0	2	2	3.0	2	7	2	1	0	8	8.8	
at Purdue	11/18/18	*	25	3-8	.375	3-7	.429	0-0	.000	0	1	1	2.6	2	2	2	0	2	9	8.8	
at Evansville	11/20/18		13	1-2	.500	0-1	.000	0-0	.000	0	3	3	2.7	0	1	0	0	1	2	7.7	
SIUE	11/24/18		14	1-5	.200	1-3	.333	0-0	.000	0	3	3	2.7	2	0	2	0	0	3	7.0	
at Loyola-Chicago	11/29/18	*	25	1-4	.250	1-4	.250	0-0	.000	0	1	1	2.5	2	2	1	0	0	3	6.5	
at Milwaukee	12/01/18		29	1-5	.200	1-3	.333	2-2	1.000	1	6	7	3.0	4	2	1	0	0	5	6.3	
EASTERN MICHIGAN	12/08/18		29	4-6	.667	0-1	.000	3-3	1.000	0	4	4	3.1	1	1	2	0	1	11	6.8	
GOSHEN	12/16/18		16	4-7	.571	1-3	.333	0-0	.000	0	2	2	3.0	2	0	1	0	2	9	7.0	
VALPARAISO	12/19/18		17	0-4	.000	0-3	.000	1-2	.500	0	2	2	2.9	3	1	2	0	0	1	6.5	
at North Dakota State	12/28/18		24	2-6	.333	0-3	.000	0-0	.000	1	1	2	2.8	2	1	1	0	0	4	6.3	
at North Dakota	12/30/18		13	0-3	.000	0-2	.000	2-2	1.000	0	2	2	2.8	0	2	3	0	1	2	6.0	
SOUTH DAKOTA STATE	01/03/19		7	0-1	.000	0-1	.000	0-0	.000	1	0	1	2.7	0	0	2	0	0	0	5.6	
ORAL ROBERTS	01/09/19		dnp	-	-	-	-	-	-	-	-	-	-	-	-	-	-	-	-	-	
at South Dakota	01/12/19		1	0-0	.000	0-0	.000	0-0	.000	0	0	0	2.5	0	0	0	0	0	0	5.3	
at Western Illinois	01/19/19		17	4-9	.444	3-5	.600	0-0	.000	3	4	7	2.8	3	0	1	0	1	11	5.6	
OMAHA	01/24/19		26	1-5	.200	0-2	.000	0-0	.000	2	2	4	2.8	0	0	1	0	0	2	5.4	
DENVER	01/26/19		24	1-3	.333	1-2	.500	2-2	1.000	0	3	3	2.8	2	0	2	0	0	5	5.4	
at Oral Roberts	01/30/19		25	0-3	.000	0-3	.000	2-2	1.000	1	2	3	2.9	0	0	0	0	0	2	5.2	
SOUTH DAKOTA	02/02/19		10	0-1	.000	0-0	.000	0-0	.000	0	0	0	2.7	0	0	2	0	0	0	5.0	
WESTERN ILLINOIS	02/06/19		17	0-4	.000	0-4	.000	0-0	.000	1	1	2	2.7	2	1	1	0	1	0	4.7	
at Denver	02/13/19		dnp	-	-	-	-	-	-	-	-	-	-	-	-	-	-	-	-	-	
at Omaha	02/16/19		10	0-1	.000	0-0	.000	0-0	.000	0	1	1	2.6	0	1	0	0	0	0	4.5	
at South Dakota State	02/20/19		25	2-4	.500	0-1	.000	1-1	1.000	1	2	3	2.6	2	1	1	0	1	5	4.5	
Totals			3	470	39-108	.361	18-64	.281	13-14	.929	12	51	63	2.6	35	26	31	2	15	109	4.5

Games played: 24  
Minutes/game: 19.6  
Points/game: 4.5  
FG Pct: .36.1  
3FG Pct: 28.1  
FT Pct: 92.9

Rebounds/game: 2.6  
Assists/game: 1.1  
Turnovers/game: 1.3  
Assist/turnover ratio: 0.8  
Steals/game: 0.6  
Blocks/game: 0.1

## CAREER STATS

		Total		3-Point		F-Throws		Rebounds											Scoring	
Season	gp-gs	min/avg	fg-fga	pct	fg-fga	pct	ft-fa	pct	off	def	tot	avg	pf	fo	ast	to	blk	stl	pts	avg
2017-18	27-2	364/13.5	34-113	.301	21-78	.269	8-9	.889	5	28	33	1.2	18	0	15	25	2	10	97	3.6
2018-19	24-3	470/19.6	39-108	.361	18-64	.281	13-14	.929	12	51	63	2.6	35	0	26	31	2	15	109	4.5
TOTAL	51-5	834/16.4	73-221	.330	39-142	.275	21-23	.913	17	79	96	1.9	53	0	41	56	4	25	206	4.0

## 15 2018-19 PURDUE FORT WAYNE WOMEN'S BASKETBALL GAME NOTES



@MastodonWBB



10

HANNAH ALBRECHT

Junior | 5-7

Crown Point, Ind.

Crown Point

Saint Joseph's (IN)

GUARD

SEASON HIGH	CATEGORY	CAREER HIGH
40, at Loyola-Chicago, 11/29/2018	Minutes	43, vs. William Jewell, 2/11/2017 *
21, at Omaha, 2/16/2019	Points	23, at Maryville, 1/5/2017 *
6, two times	Rebounds	7, two times *
5, vs. Valparaiso, 12/19/2018	Assists	8, vs. Bellarmine, 1/28/2017 *
2, at Western Michigan, 11/8/2018	Steals	3, six times *
—	Blocks	2, at Truman State, 2/4/2017 *
8, at Omaha, 2/16/2019	FG Made	10, vs. Bellarmine, 1/28/2017 *
15, at Milwaukee, 12/1/2018	FG Attempts	16, vs. Bellarmine, 1/28/2017 *
3, three times	3-PT Made	3, eight times *
6, three times	3-PT Attempts	7, four times *
8, vs. Denver, 1/26/2019	FT Made	8, vs. Denver, 1/26/2019
10, vs. Denver, 1/26/2019	FT Attempts	10, vs. Denver, 1/26/2019

\* = Includes while at Saint Joseph's

## CAREER NOTES

- Transferred in for the 2017-18 season
- Majoring in Marketing
- Brothers Spike played at Michigan and Purdue, and Stephen played at Toledo and Brown; father Chuck played at Vincennes and Purdue Calumet; grandfather Charles played briefly at Indiana.

## PRIOR TO FORT WAYNE

- Played one season at Saint Joseph's (IN) before it closed in May of 2017
- Named Third Team All-Great Lakes Valley Conference (GLVC)
- Named to the GLVC All-Freshman Team

## CAREER VS. NORTH DAKOTA

Season	gp-gs	min/avg	Total fg-fga	pct	3-Point fg-fga	pct	F-Throws ft-fga	pct	Rebounds off	def	tot	avg	pf	fo	ast	to	blk	stl	pts	avg
2018-19	1-1	31/31.0	2-9	.222	1-3	.333	4-4	1.000	1	0	1	1.0	4	0	2	1	0	0	9	9.0
TOTAL	1-1	31/31.0	2-9	.222	1-3	.333	4-4	1.000	1	0	1	1.0	4	0	2	1	0	0	9	9.0

SINGLE-GAME HIGHS [all-time ranking]:  
 Points: 9, at North Dakota -- 12/30/18  
 Rebounds: 1, at North Dakota -- 12/30/18  
 Assists: 2, at North Dakota -- 12/30/18  
 FG made: 2, at North Dakota -- 12/30/18  
 FG attempts: 9, at North Dakota -- 12/30/18  
 3FG made: 1, at North Dakota -- 12/30/18  
 3FG attempts: 3, at North Dakota -- 12/30/18

FT made: 4, at North Dakota -- 12/30/18  
 FT attempts: 4, at North Dakota -- 12/30/18

## SEASON STATS

Opponent	Date	gs	min	Total		3-Pointers		Free throws		Rebounds				pf	a	t/o	blk	stl	pts	avg		
				fg-fga	pct	3fg-fga	pct	ft-fga	pct	off	def	tot	avg									
IU KOKOMO	11/06/18	*	28	3-5	.600	0-1	.000	0-0	.000	0	1	1	1.0	1	2	2	0	1	6	6.0		
at Western Michigan	11/08/18	*	17	0-0	.000	0-0	.000	0-0	.000	0	1	1	1.0	2	1	1	0	2	0	3.0		
TAYLOR (IN)	11/12/18	*	35	6-10	.600	2-3	.667	0-0	.000	0	1	1	1.0	1	1	3	0	0	14	6.7		
at Eastern Illinois	11/15/18	*	29	2-8	.250	1-3	.333	1-2	.500	0	2	2	1.3	1	1	4	0	0	6	6.5		
at Purdue	11/18/18	*	22	4-9	.444	2-4	.500	2-2	1.000	0	1	1	1.2	2	0	3	0	0	12	7.6		
at Evansville	11/20/18	*	31	2-7	.286	0-1	.000	1-1	1.000	2	4	6	2.0	3	3	0	0	0	5	7.2		
SIUE	11/24/18	*	36	3-8	.375	0-3	.000	1-2	.500	0	1	1	1.9	2	2	1	0	0	7	7.1		
at Loyola-Chicago	11/29/18	*	40	6-13	.462	3-4	.750	0-0	.000	0	2	2	1.9	1	2	2	0	1	15	8.1		
at Milwaukee	12/01/18	*	39	3-15	.200	1-6	.167	2-2	1.000	0	4	4	2.1	1	2	3	0	0	9	8.2		
EASTERN MICHIGAN	12/08/18	*	17	0-2	.000	0-1	.000	0-0	.000	0	0	0	1.9	5	2	3	0	0	0	7.4		
GOSHEN	12/16/18	*	27	5-10	.500	1-3	.333	0-0	.000	2	0	2	1.9	2	1	1	0	1	11	7.7		
VALPARAISO	12/19/18	*	35	3-8	.375	0-2	.000	0-0	.000	1	2	3	2.0	0	5	1	0	1	6	7.6		
at North Dakota State	12/28/18	*	23	2-6	.333	2-2	1.000	0-0	.000	0	4	4	2.2	4	1	1	0	0	6	7.5		
at North Dakota	12/30/18	*	31	2-9	.222	1-3	.333	4-4	1.000	1	0	1	2.1	4	2	1	0	0	9	7.6		
SOUTH DAKOTA STATE	01/03/19	*	20	3-4	.750	1-1	1.000	0-0	.000	0	5	5	2.3	1	0	3	0	0	7	7.5		
ORAL ROBERTS	01/09/19	*	16	2-3	.667	2-2	1.000	0-0	.000	1	1	2	2.3	1	0	4	0	0	6	7.4		
at South Dakota	01/12/19	*	28	2-5	.400	1-2	.500	0-0	.000	1	1	2	2.2	3	1	3	0	0	5	7.3		
at Western Illinois	01/19/19	*	31	6-13	.462	3-5	.600	1-2	.500	1	3	4	2.3	4	2	3	0	0	16	7.8		
OMAHA	01/24/19	*	39	1-5	.200	1-3	.333	1-2	.500	0	2	2	2.3	2	1	3	0	1	4	7.6		
DENVER	01/26/19	*	40	5-13	.385	0-4	.000	8-10	.800	1	5	6	2.5	1	4	4	0	1	18	8.1		
at Oral Roberts	01/30/19	*	20	1-2	.500	1-1	1.000	0-0	.000	0	1	1	2.4	0	2	2	0	0	3	7.9		
SOUTH DAKOTA	02/02/19	*	22	0-4	.000	0-2	.000	0-0	.000	1	1	2	2.4	1	1	3	0	0	0	7.5		
WESTERN ILLINOIS	02/06/19	*	35	3-11	.273	1-3	.333	5-5	1.000	1	4	5	2.5	4	2	4	0	1	12	7.7		
at Denver	02/13/19	*	34	3-7	.429	0-1	.000	1-2	.500	0	5	5	2.6	1	0	2	0	0	7	7.7		
at Omaha	02/16/19	*	34	8-14	.571	3-6	.500	2-2	1.000	1	1	2	2.6	3	0	2	0	1	21	8.2		
at South Dakota State	02/20/19	*	32	3-11	.273	0-6	.000	3-3	1.000	0	2	2	2.6	1	2	2	0	1	9	8.2		
Totals			25	761		78-202	.386	26-72	.361	32-39	.821	13	54	67	2.6	51	40	61	0	11	214	8.2

Games played: 26  
 Minutes/game: 29.3  
 Points/game: 8.2  
 FG Pct: .38.6  
 3FG Pct: 36.1  
 FT Pct: 82.1

Rebounds/game: 2.6  
 Assists/game: 1.5  
 Turnovers/game: 2.3  
 Assist/turnover ratio: 0.7  
 Steals/game: 0.4

## CAREER STATS

Season	gp-gs	min/avg	Total fg-fga	pct	3-Point fg-fga	pct	F-Throws ft-fga	pct	Rebounds off	def	tot	avg	pf	fo	ast	to	blk	stl	pts	avg
2016-17*	29-26	301/10.4	95-225	.422	31-92	.337	48-55	.873	10	64	74	2.6	48	1	48	47	5	29	269	9.3
2017-18	27-26	835/30.9	67-172	.390	23-55	.418	39-47	.830	6	72	78	2.9	47	0	53	56	5	20	196	7.3
2018-19	26-25	761/29.3	78-202	.386	26-72	.361	32-39	.821	13	54	67	2.6	51	1	40	61	0	11	214	8.2
TOTAL	53-51	1596/30.1	145-374	.388	49-127	.386	71-86	.826	19	126	145	2.7	98	1	93	117	5	31	410	7.7
All*	82-77	1897/23.1	240-599	.401	80-219	.365	119-141	.844	29	190	219	2.7	146	2	141	164	10	60	679	8.3

\* include statistics from Saint Joseph's

@MastodonWBB



2018-19 PURDUE FORT WAYNE WOMEN'S BASKETBALL GAME NOTES 16



12

ANNA LAPPENKÜPER

Junior | 5-9  
 Herne, Germany  
 Otto Hahn Gymnasium

GUARD

## CAREER NOTES

- 2016-17 Summit League Academic Honor Roll
- Majoring in Management

## PRIOR TO FORT WAYNE

- Member of the U20 German National team that won the 2017 FIBA U20 Women's European Championship, Division B title
- Team captain of the German U16 team that won gold in Division B at the 2014 FIBA Women's European Championship

## CAREER VS. NORTH DAKOTA

Season	gp-gs		min/avg		Total fg-fga		pct	3-Point fg-fga		pct	F-Throws ft-fga		pct	Rebounds off def tot avg				Scoring pf fo ast to blk stl pts avg			
2018-19	1-1		36	36.0	3-4		.750	1-1		1.000	1-1		1.000	1	3	4	4.0	4	0	2	4
TOTAL	1-1		36	36.0	3-4		.750	1-1		1.000	1-1		1.000	1	3	4	4.0	4	0	2	4

SINGLE-GAME HIGHS [all-time ranking]:

Points: 8, at North Dakota -- 12/30/18  
Rebounds: 4, at North Dakota -- 12/30/18  
Assists: 2, at North Dakota -- 12/30/18  
Steals: 4, at North Dakota -- 12/30/18  
FG made: 3, at North Dakota -- 12/30/18  
FG attempts: 4, at North Dakota -- 12/30/18  
3FG made: 1, at North Dakota -- 12/30/18

3FG attempts: 1, at North Dakota -- 12/30/18  
FT made: 1, at North Dakota -- 12/30/18  
FT attempts: 1, at North Dakota -- 12/30/18

## SEASON STATS

Opponent	Date	gs	min	Total		3-Pointers		Free throws		Rebounds				pf	a	t/o	blk	stl	pts	avg	
				fg-fga	pct	3fg-fga	pct	ft-fga	pct	off	def	tot	avg								
IU KOKOMO	11/06/18	*	30	1-4	.250	0-2	.000	0-0	.000	0	5	5	5.0	2	6	2	0	2	2	2.0	
at Western Michigan	11/08/18	*	40	1-5	.200	1-2	.500	0-0	.000	2	1	3	4.0	2	4	4	0	2	3	2.5	
TAYLOR (IN)	11/12/18	*	29	4-9	.444	1-3	.333	0-0	.000	1	2	3	3.7	0	4	4	0	2	9	4.7	
at Eastern Illinois	11/15/18	*	24	1-3	.333	0-0	.000	0-0	.000	2	2	4	3.8	0	2	5	1	0	2	4.0	
at Purdue	11/18/18	*	32	3-8	.375	1-4	.250	0-2	.000	1	1	2	3.4	3	2	2	0	1	7	4.6	
at Evansville	11/20/18	*	35	3-5	.600	0-1	.000	4-4	1.000	0	4	4	3.5	2	4	3	2	1	10	5.5	
SIUE	11/24/18	*	28	2-3	.667	1-2	.500	0-0	.000	2	4	6	3.9	1	0	3	0	1	5	5.4	
at Loyola-Chicago	11/29/18	*	29	3-10	.300	3-6	.500	0-0	.000	0	2	2	3.6	3	4	2	1	0	9	5.9	
at Milwaukee	12/01/18	*	25	1-5	.200	1-2	.500	1-2	.500	2	1	3	3.6	2	1	1	0	1	4	5.7	
EASTERN MICHIGAN	12/08/18	*	34	2-9	.222	1-5	.200	0-0	.000	1	1	2	3.4	3	2	1	0	3	5	5.6	
GOSHEN	12/16/18	*	31	1-4	.250	1-4	.250	0-0	.000	2	0	2	3.3	2	7	1	0	2	3	5.4	
VALPARAISO	12/19/18	*	38	5-11	.455	2-4	.500	0-0	.000	1	1	2	3.2	2	4	4	0	3	12	5.9	
at North Dakota State	12/28/18	*	31	2-5	.400	0-1	.000	0-0	.000	0	1	1	3.0	5	5	1	1	3	4	5.8	
at North Dakota	12/30/18	*	36	3-4	.750	1-1	1.000	1-1	1.000	1	3	4	3.1	4	2	4	0	4	8	5.9	
SOUTH DAKOTA STATE	01/03/19	*	30	1-5	.200	0-1	.000	0-0	.000	0	1	1	2.9	3	1	4	0	1	2	5.7	
ORAL ROBERTS	01/09/19	*	31	1-3	.333	1-2	.500	0-0	.000	1	3	4	3.0	1	0	2	0	0	3	5.5	
at South Dakota	01/12/19	*	32	4-10	.400	3-6	.500	0-0	.000	0	1	1	2.9	1	1	6	0	1	11	5.8	
at Western Illinois	01/19/19	*	37	1-6	.167	0-4	.000	0-0	.000	1	4	5	3.0	3	1	5	0	0	2	5.6	
OMAHA	01/24/19	*	28	2-6	.333	0-1	.000	0-0	.000	0	0	0	2.8	0	2	3	0	3	4	5.5	
DENVER	01/26/19	*	22	1-2	.500	1-2	.500	1-2	.500	0	1	1	2.8	4	1	3	0	0	4	5.5	
at Oral Roberts	01/30/19	*	24	1-6	.167	0-3	.000	0-0	.000	0	0	0	2.6	0	3	0	0	1	2	5.3	
SOUTH DAKOTA	02/02/19	*	24	1-1	1.000	0-0	.000	0-0	.000	0	1	1	2.5	0	1	2	0	3	2	5.1	
WESTERN ILLINOIS	02/06/19	*	26	0-4	.000	0-1	.000	0-0	.000	2	1	3	2.6	0	3	3	0	2	0	4.9	
at Denver	02/13/19	*	37	8-11	.727	0-2	.000	4-7	.571	0	1	1	2.5	1	2	6	0	2	20	5.5	
at Omaha	02/16/19	*	32	0-3	.000	0-1	.000	3-4	.750	0	3	3	2.5	3	4	2	1	0	3	5.4	
at South Dakota State	02/20/19	*	25	1-6	.167	0-2	.000	0-0	.000	0	0	0	2.4	2	0	4	1	1	2	5.3	
Totals			26	790	53-148	.358	18-62	290	14-22	.636	19	44	63	2.4	49	66	77	7	39	138	5.3

Games played: 26  
Minutes/game: 30.4  
Points/game: 5.3  
FG Pct: 35.8  
3FG Pct: 29.0  
FT Pct: 63.6

Rebounds/game: 2.4  
Assists/game: 2.5  
Turnovers/game: 3.0  
Assist/turnover ratio: 0.9  
Steals/game: 1.5  
Blocks/game: 0.3

## CAREER STATS

Season	gp-gs		min/avg		Total fg-fga		pct	3-Point fg-fga		pct	F-Throws ft-fga		pct	Rebounds off def tot avg				pf	fo	ast	to	blk	stl	Scoring pts avg	
2016-17	29-24		888	30.6	75-206		.364	19-79		.241	24-34		.706	10	64	74	2.6	62	2	46	84	2	26	193	6.7
2017-18	27-27		783	29.0	68-188		.362	18-61		.295	39-47		.830	26	36	62	2.3	66	0	54	58	2	16	193	7.1
2018-19	26-26		790	30.4	53-148		.358	18-62		.290	14-22		.636	19	44	63	2.4	49	1	66	77	7	39	138	5.3
TOTAL	82-77		2461	30.0	196-542		.362	55-202		.272	77-103		.748	55	144	199	2.4	177	3	166	219	11	81	524	6.4

SEASON HIGH	CATEGORY	CAREER HIGH
40, at Western Michigan, 11/8/2018	Minutes	40, three times
20, at Denver, 2/13/2019	Points	20, at Denver, 2/13/2019
5, two times	Rebounds	6, at Illinois, 11/10/2017
7, vs. Goshen, 12/16/2018	Assists	7, two times
4, at North Dakota, 12/30/2018	Steals	4, at North Dakota, 12/30/2018
2, at Evansville, 11/20/2018	Blocks	2, at Evansville, 11/20/2018
8, at Denver, 2/13/2019	FG Made	8, at Denver, 2/13/2019
11, two times	FG Attempts	15, at South Dakota State, 1/5/2017
3, two times	3-PT Made	3, four times
6, two times	3-PT Attempts	10, at South Dakota State, 1/5/2017
4, at Evansville, 11/20/2018	FT Made	8, vs. Loyola-Chicago, 11/12/2017
7, at Denver, 2/13/2019	FT Attempts	9, vs. Loyola-Chicago, 11/12/2017

## ABOUT HERNE, GERMANY

- Home to the Cranger Kirmes funfair every first week of August. The second largest carnival in Germany with an average of around 4,500,000 visitors. Its origins can be traced back to the 15th century

## ABOUT GERMANY

- Population: 82,175,700, 16th largest in the world | Official language is German
- East Germany and West Germany reunified on October 3, 1990
- Is the largest music market in Europe and home to German-born music composers Johann Sebastian Bach and Ludwig van Beethoven
- Known as a leading automobile haven of the world include Mercedes-Benz, BMW, Volkswagen, Audi and Porsche





De'JOUR  
YOUNG

Senior | 5-7  
 Fort Wayne, Ind.  
 Concordia Lutheran

GUARD

13

## CAREER NOTES

- Majoring in Criminal Justice

## PRIOR TO FORT WAYNE

- Led Concordia to the Summit Athletic Conference tournament title in 2015
- Averaged 18.5 points, 7.1 rebounds, 2.6 assists, and 1.5 steals per game
- Was a 2015 First Team All-SAC
- Was a 2015 All-Northeast Indiana First Team honoree

## CAREER VS. NORTH DAKOTA

			Total		3-Point		F-Throws		Rebounds										Scoring	
Season	gp-gs	min/avg	fg-fga	pct	fg-fga	pct	ft-fa	pct	off	def	tot	avg	pf	fo	ast	to	blk	stl	pts	avg
2018-19	1-1	36/36.0	3-12	.250	1-3	.333	3-4	.750	0	5	5	5.0	4	0	3	4	0	1	10	10.0
TOTAL	1-1	36/36.0	3-12	.250	1-3	.333	3-4	.750	0	5	5	5.0	4	0	3	4	0	1	10	10.0

SINGLE-GAME HIGHS [all-time ranking]:  
Points: 10, at North Dakota -- 12/30/18  
Rebounds: 5, at North Dakota -- 12/30/18  
Assists: 3, at North Dakota -- 12/30/18  
Steals: 1, at North Dakota -- 12/30/18  
FG made: 3, at North Dakota -- 12/30/18  
FG attempts: 12, at North Dakota -- 12/30/18  
3FG made: 1, at North Dakota -- 12/30/18  
3FG attempts: 3, at North Dakota -- 12/30/18

FT made: 3, at North Dakota -- 12/30/18  
FT attempts: 4, at North Dakota -- 12/30/18

## SEASON STATS

Opponent	Date	gs	min	Total		3-Pointers		Free throws		Rebounds			pf	a	t/o	blk	stl	pts	avg		
				fg-fga	pct	3fg-fga	pct	ft-fga	pct	off	def	tot								avg	
IU KOKOMO	11/06/18	*	24	7-10	.700	1-2	.500	7-10	.700	3	1	4	4.0	3	1	1	2	1	22	22.0	
at Western Michigan	11/08/18	*	31	6-10	.600	2-2	1.000	0-4	.000	2	5	7	5.5	5	1	6	0	1	14	18.0	
TAYLOR (IN)	11/12/18	*	31	6-11	.545	1-2	.500	7-8	.875	4	4	8	6.3	2	2	1	1	2	20	18.7	
at Eastern Illinois	11/15/18	*	31	2-8	.250	1-3	.333	2-2	1.000	2	7	9	7.0	2	1	5	0	0	7	15.8	
at Purdue	11/18/18	*	32	1-7	.143	0-1	.000	2-2	1.000	3	2	5	6.6	3	4	0	0	2	4	13.4	
at Evansville	11/20/18	*	39	7-13	.538	2-6	.333	3-4	.750	1	6	7	6.7	3	1	2	1	4	19	14.3	
SIUE	11/24/18	*	36	1-11	.091	0-2	.000	2-4	.500	1	5	6	6.6	2	2	4	0	2	4	12.9	
at Loyola-Chicago	11/29/18	*	40	6-11	.545	3-6	.500	3-5	.600	1	2	3	6.1	1	3	1	0	1	18	13.5	
at Milwaukee	12/01/18	*	37	2-10	.200	2-7	.286	4-6	.667	2	1	3	5.8	1	0	1	1	1	10	13.1	
EASTERN MICHIGAN	12/08/18	*	40	2-6	.333	0-2	.000	8-9	.889	3	4	7	5.9	3	2	6	0	3	12	13.0	
GOSHEN	12/16/18	*	26	8-10	.800	0-1	.000	3-3	1.000	3	5	8	6.1	1	4	3	2	3	19	13.5	
VALPARAISO	12/19/18	*	35	4-11	.364	1-5	.200	4-7	.571	4	10	14	6.8	4	2	5	0	0	13	13.5	
at North Dakota State	12/28/18	*	32	8-17	.471	1-1	1.000	2-2	1.000	4	2	6	6.7	3	2	2	1	0	19	13.9	
at North Dakota	12/30/18	*	36	3-12	.250	1-3	.333	3-4	.750	0	5	5	6.6	4	3	4	0	1	10	13.6	
SOUTH DAKOTA STATE	01/03/19	*	34	3-6	.500	1-3	.333	3-4	.750	0	2	2	6.3	0	3	3	0	1	10	13.4	
ORAL ROBERTS	01/09/19	*	27	0-6	.000	0-2	.000	1-2	.500	3	5	8	6.4	4	4	2	3	0	1	12.6	
at South Dakota	01/12/19	*	34	4-9	.444	1-4	.250	0-0	.000	1	3	4	6.2	1	2	4	0	1	9	12.4	
at Western Illinois	01/19/19	*	35	5-14	.357	3-6	.500	0-0	.000	3	11	14	6.7	3	1	3	0	0	13	12.4	
OMAHA	01/24/19	*	37	10-15	.667	2-3	.667	3-4	.750	3	3	6	6.6	3	2	4	0	1	25	13.1	
DENVER	01/26/19	*	27	5-7	.714	2-4	.500	2-4	.500	2	1	3	6.5	3	1	4	0	2	14	13.2	
at Oral Roberts	01/30/19	*	32	1-7	.143	1-5	.200	0-0	.000	0	7	7	6.5	3	0	3	0	1	3	12.7	
SOUTH DAKOTA	02/02/19	*	28	4-10	.400	1-3	.333	0-0	.000	2	3	5	6.4	4	2	0	0	1	9	12.5	
WESTERN ILLINOIS	02/06/19	*	32	6-11	.545	1-3	.333	4-4	1.000	2	3	5	6.3	1	2	3	0	6	17	12.7	
at Denver	02/13/19	*	36	4-11	.364	0-4	.000	3-3	1.000	3	6	9	6.5	3	4	2	0	2	11	12.6	
at Omaha	02/16/19	*	37	5-10	.500	0-2	.000	0-1	.000	5	5	10	6.6	5	3	3	1	1	10	12.5	
at South Dakota State	02/20/19	*	32	4-7	.571	2-3	.667	1-4	.250	1	1	2	6.4	1	3	1	0	1	11	12.5	
Totals			26	861	114-260	.438	29-85	.341	67-96	.698	58	109	167	6.4	68	55	73	12	38	324	12.5

Games played: 26  
Minutes/game: 33.1  
Points/game: 12.5  
FG Pct: 43.8  
3FG Pct: 34.1  
FT Pct: 69.8

Rebounds/game: 6.4  
Assists/game: 2.1  
Turnovers/game: 2.8  
Assist/turnover ratio: 0.8  
Steals/game: 1.5  
Blocks/game: 0.5

## CAREER STATS

				Total		3-Point		F-Throws		Rebounds										Scoring	
Season	gp-gs	min/avg		fg-fga	pct	fg-fga	pct	ft-fa	pct	off	def	tot	avg	pf	fo	ast	to	blk	stl	pts	avg
2015-16	30-21	688/22.9		72-176	.409	8-19	.421	51-72	.708	55	52	107	3.6	69	1	34	34	8	33	203	6.8
2016-17	29-29	910/31.4		134-327	.410	12-62	.194	74-87	.851	56	101	157	5.4	77	2	59	68	6	27	354	12.2
2017-18	26-24	848/32.6		101-280	.361	14-65	.215	72-101	.713	64	93	157	6.0	53	0	45	74	16	34	288	11.1
2018-19	26-26	861/33.1		114-260	.438	29-85	.341	67-96	.698	58	109	167	6.4	68	2	55	73	12	38	324	12.5
TOTAL	111-100	3307/29.8		421-1043	.404	63-231	.273	264-356	.742	233	355	588	5.3	267	5	193	249	42	132	1169	10.5

@MastodonWBB



2018-19 PURDUE FORT WAYNE WOMEN'S BASKETBALL GAME NOTES 18

SEASON HIGH	CATEGORY	CAREER HIGH
40, at Loyola-Chicago, 11/29/2018	Minutes	40, three times
25, vs. Omaha, 1/24/2019	Points	25, vs. Omaha, 1/24/2019
14, two times	Rebounds	14, two times
4, four times	Assists	5, three times
6, vs. Western Illinois, 2/6/2019	Steals	6, vs. Western Illinois, 2/6/2019
3, vs. Oral Roberts, 1/9/2019	Blocks	3, two times
10, vs. Omaha, 1/24/2019	FG Made	10, vs. Omaha, 1/24/2019
17, at North Dakota, 12/30/2018	FG Attempts	19, vs. Maryville, 12/19/2017
3, two times	3-PT Made	3, three times
7, at Milwaukee, 12/1/2018	3-PT Attempts	8, vs. Maryville, 12/19/2017
8, vs. Eastern Michigan, 12/8/2018	FT Made	8, two times
10, vs. IU Kokomo, 11/6/2018	FT Attempts	10, three times



14

Sh'TOYA SANDERS

R-Junior | 6-0  
Fort Wayne, Ind.  
Wayne  
Chicago State  
**FORWARD**

## CAREER NOTES

- Sat out the 2017-18 season due to transfer rules
- Majoring in Criminal Justice

## PRIOR TO FORT WAYNE

- Played two seasons at Chicago State (2015-16 and 2016-17)
- Named the Western Athletic Conference Player of the Week on 11/28/2016
- Had 23 rebounds at Northern Illinois on 11/22/2016, which were fifth most by a Division I player that season

## CAREER VS. NORTH DAKOTA

			Total		3-Point		F-Throws			Rebounds										Scoring	
Season	gp-gs	min/avg	fg-fga	pct	fg-fga	pct	ft-fa	pct	off	def	tot	avg	pf	fo	ast	to	blk	stl	pts	avg	
2018-19	1-1	26/26.0	4-7	.571	0-0	.000	4-6	.667	3	5	8	8.0	1	0	0	3	0	0	12	12.0	
TOTAL	1-1	26/26.0	4-7	.571	0-0	.000	4-6	.667	3	5	8	8.0	1	0	0	3	0	0	12	12.0	

SINGLE-GAME HIGHS [all-time ranking]:  
Points: 12, at North Dakota -- 12/30/18  
Rebounds: 8, at North Dakota -- 12/30/18  
FG made: 4, at North Dakota -- 12/30/18  
FG attempts: 7, at North Dakota -- 12/30/18  
FT made: 4, at North Dakota -- 12/30/18  
FT attempts: 6, at North Dakota -- 12/30/18

## SEASON STATS

Opponent	Date	gs	min	Total		pct	3-Pointers		pct	Free throws		pct	Rebounds				pf	a	t/o	blk	stl	pts	avg
				fg-fga			3fg-fga			ft-fa			off	def	tot	avg							
IU KOKOMO	11/06/18	*	17	6-8	.750	0-0	.000	1-3	.333	0	4	4	4.0	3	0	2	3	1	13	13.0			
at Western Michigan	11/08/18	*	24	4-11	.364	0-0	.000	1-2	.500	5	6	11	7.5	4	0	0	0	0	9	11.0			
TAYLOR (IN)	11/12/18	*	15	0-2	.000	0-0	.000	1-1	1.000	2	1	3	6.0	4	0	1	1	2	1	7.7			
at Eastern Illinois	11/15/18	*	23	3-5	.600	0-0	.000	2-2	1.000	2	2	4	5.5	3	2	2	0	0	8	7.8			
at Purdue	11/18/18	*	21	1-7	.143	0-0	.000	0-0	.000	3	2	5	5.4	3	0	2	0	2	2	6.6			
at Evansville	11/20/18	*	23	6-16	.375	0-0	.000	1-3	.333	6	2	8	5.8	1	1	2	2	2	13	7.7			
SIUE	11/24/18	*	25	4-8	.500	0-0	.000	4-5	.800	1	6	7	6.0	4	0	3	2	1	12	8.3			
at Loyola-Chicago	11/29/18	19	3-3	1.000	0-0	.000	0-0	.000	2	3	5	5.9	3	2	1	1	2	6	8.0				
at Milwaukee	12/01/18	dnp	-	-	-	-	-	-	-	-	-	-	-	-	-	-	-	-	-	-	-		
EASTERN MICHIGAN	12/08/18	dnp	-	-	-	-	-	-	-	-	-	-	-	-	-	-	-	-	-	-	-		
GOSHEN	12/16/18	dnp	-	-	-	-	-	-	-	-	-	-	-	-	-	-	-	-	-	-	-		
VALPARAISO	12/19/18	10	1-3	.333	0-0	.000	0-2	.000	0	3	3	5.6	2	0	0	2	1	2	7.3				
at North Dakota State	12/28/18	27	4-8	.500	0-0	.000	1-6	.167	3	6	9	5.9	3	0	3	1	2	9	7.5				
at North Dakota	12/30/18	*	26	4-7	.571	0-0	.000	4-6	.667	3	5	8	6.1	1	0	3	0	0	12	7.9			
SOUTH DAKOTA STATE	01/03/19	*	23	3-9	.333	0-0	.000	1-2	.500	3	5	8	6.3	3	0	2	0	2	7	7.8			
ORAL ROBERTS	01/09/19	*	27	6-12	.500	0-0	.000	0-4	.000	2	6	8	6.4	2	0	1	2	1	12	8.2			
at South Dakota	01/12/19	*	21	2-6	.333	0-0	.000	4-5	.800	2	3	5	6.3	3	2	0	1	1	8	8.1			
at Western Illinois	01/19/19	*	12	0-3	.000	0-0	.000	0-0	.000	5	4	9	6.5	3	0	2	5	0	0	7.6			
OMAHA	01/24/19	*	23	1-3	.333	0-0	.000	3-4	.750	2	9	11	6.8	2	0	1	3	3	5	7.4			
DENVER	01/26/19	*	23	5-7	.714	0-0	.000	0-3	.000	5	7	12	7.1	4	0	1	0	3	10	7.6			
at Oral Roberts	01/30/19	*	26	4-8	.500	0-0	.000	2-3	.667	3	2	5	6.9	3	1	2	3	0	10	7.7			
SOUTH DAKOTA	02/02/19	*	22	2-4	.500	0-0	.000	1-2	.500	3	2	5	6.8	3	0	5	2	1	5	7.6			
WESTERN ILLINOIS	02/06/19	*	23	5-6	.833	0-0	.000	2-3	.667	1	7	8	6.9	3	0	2	1	0	12	7.8			
at Denver	02/13/19	*	23	5-6	.833	0-1	.000	0-1	.000	2	5	7	6.9	5	0	4	1	0	10	7.9			
at Omaha	02/16/19	*	28	3-15	.200	0-0	.000	4-6	.667	6	6	12	7.1	4	0	3	5	2	10	8.0			
at South Dakota State	02/20/19	20	5-8	.625	0-0	.000	4-5	.800	2	2	4	7.0	4	0	2	1	1	14	8.3				
Totals		19	501	77-165	.467	0-1	.000	36-68	.529	63	98	161	7.0	70	8	44	36	27	190	8.3			

Games played: 23  
Minutes/game: 21.8  
Points/game: 8.3  
FG Pct: .467  
3FG Pct: 0.0  
FT Pct: 52.9

Rebounds/game: 7.0  
Assists/game: 0.3  
Turnovers/game: 1.9  
Assist/turnover ratio: 0.2  
Steals/game: 1.2  
Blocks/game: 1.6

## CAREER STATS

			Total			3-Point		F-Throws			Rebounds				include statistics from entires							Scoring	
Season	gp-gs	min/avg	fg-fga	pct		fg-fga	pct	ft-fa	pct		off	def	tot	avg	pf	fo	ast	to	blk	stl	pts	avg	
2015-16*	29-28	742/25.6	99-217	.456		0-0	.000	41-74	.554		77	105	182	6.3	93	4	25	70	47	43	239	8.2	
2016-17*	7-7	215/30.7	36-100	.360		2-7	.286	38-56	.679		25	44	69	9.9	26	2	4	14	29	14	112	16.0	
2018-19	23-19	501/21.8	77-165	.467		0-1	.000	36-68	.529		63	98	161	7.0	70	1	8	44	36	27	190	8.3	
TOTAL	23-19	501/21.8	77-165	.467		0-1	.000	36-68	.529		63	98	161	7.0	70	1	8	44	36	27	190	8.3	
All*	59-54	1458/24.7	212-482	.440		2-8	.250	115-198	.581		165	247	412	7.0	189	7	37	128	112	84	541	9.2	

\* include statistics from Chicago State

## 19 2018-19 PURDUE FORT WAYNE WOMEN'S BASKETBALL GAME NOTES



@MastodonWBB

SEASON HIGH	CATEGORY	CAREER HIGH
28, at Omaha, 2/16/2019	Minutes	38, four times *
14, at South Dakota State, 2/20/2019	Points	38, at Northern Illinois, 11/22/2016 *
12, two times	Rebounds	23, at Northern Illinois, 11/22/2016 *
2, three times	Assists	3, three times *
3, two times	Steals	5, three times *
5, two times	Blocks	6, two times *
6, three times	FG Made	11, at Northern Illinois, 11/22/2016 *
16, at Evansville, 11/20/2018	FG Attempts	22, at Northern Illinois, 11/22/2016 *
—	3-PT Made	1, two times *
—	3-PT Attempts	3, at Ball State, 12/1/2016 *
4, five times	FT Made	15, at Northern Illinois, 11/22/2016 *
6, three times	FT Attempts	19, at Northern Illinois, 11/22/2016 *

\* = While at Chicago State

## ABOUT FORT WAYNE, INDIANA

- Incorporated on February 22, 1840, and is the second largest city in the state. The nickname, The Summit City, is due to its location at the zenith of the locks on the canal
- Also home to the ECHL's Fort Wayne Komets, the Midwest League's Fort Wayne TinCaps, and the NBA G League's Fort Wayne Mad Ants
- Original home to the Fort Wayne Pistons, before moving to Detroit. Was also home to the Fort Wayne Daisies of the All-American Girls Professional Baseball League

## ABOUT WAYNE HIGH SCHOOL

- Nickname is the Generals
- Notable alumni include founder of Sweetwater Sound Chuck Surack, actress Molly Hagen, and former Detroit Lion Roosevelt Barnes



15

CAMARA DOUGLAS

Freshman | 5-11

San Deigo, Calif.

Mount Miguel

FORWARD

SEASON HIGH	CATEGORY	CAREER HIGH
6, vs. Goshen, 12/16/2018	Minutes	6, vs. Goshen, 12/16/2018
4, vs. Goshen, 12/16/2018	Points	4, vs. Goshen, 12/16/2018
2, vs. Goshen, 12/16/2018	Rebounds	2, vs. Goshen, 12/16/2018
	Assists	
	Steals	
	Blocks	
1, vs. Goshen, 12/16/2018	FG Made	1, vs. Goshen, 12/16/2018
3, vs. Goshen, 12/16/2018	FG Attempts	3, vs. Goshen, 12/16/2018
	3-PT Made	
	3-PT Attempts	
2, vs. Goshen, 12/16/2018	FT Made	2, vs. Goshen, 12/16/2018
2, vs. Goshen, 12/16/2018	FT Attempts	2, vs. Goshen, 12/16/2018

## CAREER NOTES

- Majoring in Computer Engineering Tech

## PRIOR TO FORT WAYNE

- Averaged 17.8 points, 9.5 rebounds, 2.5 steals and 1.5 blocks per game
- Named both the Grossmont - Hills League and All-East County Player of the Year
- Named to the All-California Interscholastic First Team her senior year
- Named to the first team's for the All-Grossmont - Hills League, San Diego Hoops Report and All-East County
- Earned First Team honors on both the All-Grossmont - Hills League team and All-East County team her junior year

## ABOUT SAN DEIGO, CALIFORNIA

- Population of 1,419,516 | Established 1769
- Eighth-largest city in the United States and second-largest in California
- Home to MLB's San Diego Padres. Former home of the NFL's San Diego Chargers, NBA's San Diego Rockets and San Diego Clippers, and the ABA's San Diego Conquistadors/Sails

## ABOUT MOUNT MIGUEL HIGH SCHOOL

- Nickname is the Matadors
- Notable alumni include former Pittsburgh Pirates pitcher Jeff Karstens, NFL offensive tackle Khalif Barnes, Television actor Matt Bradford, NFL safety Robert Griffith, and NFL defensive lineman Ogemdi Nwagburo

## SEASON STATS

Opponent	Date	gs	min	Total fg-fga	pct	3-Pointers 3fg-fga	pct	Free throws ft-fta	pct	Rebounds off	def	tot	avg	pf	a	t/o	blk	stl	pts	avg
IU KOKOMO	11/06/18	dnp	-	-	-	-	-	-	-	-	-	-	-	-	-	-	-	-	-	-
at Western Michigan	11/08/18	dnp	-	-	-	-	-	-	-	-	-	-	-	-	-	-	-	-	-	-
TAYLOR (IN)	11/12/18	dnp	-	-	-	-	-	-	-	-	-	-	-	-	-	-	-	-	-	-
at Eastern Illinois	11/15/18	dnp	-	-	-	-	-	-	-	-	-	-	-	-	-	-	-	-	-	-
at Evansville	11/20/18	dnp	-	-	-	-	-	-	-	-	-	-	-	-	-	-	-	-	-	-
SIUE	11/24/18	dnp	-	-	-	-	-	-	-	-	-	-	-	-	-	-	-	-	-	-
at Loyola-Chicago	11/29/18	dnp	-	-	-	-	-	-	-	-	-	-	-	-	-	-	-	-	-	-
at Milwaukee	12/01/18	dnp	-	-	-	-	-	-	-	-	-	-	-	-	-	-	-	-	-	-
EASTERN MICHIGAN	12/08/18	dnp	-	-	-	-	-	-	-	-	-	-	-	-	-	-	-	-	-	-
GOSHEN	12/16/18	6	1-3	.333	0-0	.000	2-2	1.000	1	1	2	2.0	3	0	0	1	0	4	4.0	
VALPARAISO	12/19/18	dnp	-	-	-	-	-	-	-	-	-	-	-	-	-	-	-	-	-	-
at North Dakota State	12/28/18	dnp	-	-	-	-	-	-	-	-	-	-	-	-	-	-	-	-	-	-
at North Dakota	12/30/18	dnp	-	-	-	-	-	-	-	-	-	-	-	-	-	-	-	-	-	-
SOUTH DAKOTA STATE	01/03/19	2	0-1	.000	0-0	.000	0-0	.000	0	1	1	1.5	1	0	0	0	0	0	2.0	
ORAL ROBERTS	01/09/19	dnp	-	-	-	-	-	-	-	-	-	-	-	-	-	-	-	-	-	-
at South Dakota	01/12/19	dnp	-	-	-	-	-	-	-	-	-	-	-	-	-	-	-	-	-	-
at Western Illinois	01/19/19	dnp	-	-	-	-	-	-	-	-	-	-	-	-	-	-	-	-	-	-
OMAHA	01/24/19	dnp	-	-	-	-	-	-	-	-	-	-	-	-	-	-	-	-	-	-
DENVER	01/26/19	dnp	-	-	-	-	-	-	-	-	-	-	-	-	-	-	-	-	-	-
at Oral Roberts	01/30/19	dnp	-	-	-	-	-	-	-	-	-	-	-	-	-	-	-	-	-	-
SOUTH DAKOTA	02/02/19	dnp	-	-	-	-	-	-	-	-	-	-	-	-	-	-	-	-	-	-
WESTERN ILLINOIS	02/06/19	dnp	-	-	-	-	-	-	-	-	-	-	-	-	-	-	-	-	-	-
at Denver	02/13/19	dnp	-	-	-	-	-	-	-	-	-	-	-	-	-	-	-	-	-	-
at Omaha	02/16/19	dnp	-	-	-	-	-	-	-	-	-	-	-	-	-	-	-	-	-	-
at South Dakota State	02/20/19	dnp	-	-	-	-	-	-	-	-	-	-	-	-	-	-	-	-	-	-
Totals		0	8	1-4	.250	0-0	.000	2-2	1.000	1	2	3	1.5	4	0	0	1	0	4	2.0

Games played: 2  
 Minutes/game: 4.0  
 Points/game: 2.0  
 FG Pct: 25.0  
 FT Pct: 100.0

Rebounds/game: 1.5  
 Blocks/game: 0.5

## CAREER STATS

Season	gp-gs	min/avg	Total fg-fga	pct	3-Point fg-fga	pct	F-Throws ft-fta	pct	Rebounds off	def	tot	avg	pf	fo	ast	to	blk	stl	Scoring pts	avg
2018-19	2-0	8/4.0	1-4	.250	0-0	.000	2-2	1.000	1	2	3	1.5	4	0	0	0	1	0	4	2.0
TOTAL	2-0	8/4.0	1-4	.250	0-0	.000	2-2	1.000	1	2	3	1.5	4	0	0	0	1	0	4	2.0





**AMAYA  
JOHNS**

23

Freshman | 5-9  
Plainfield, Ill.  
Oswego East

**GUARD**

SEASON HIGH	CATEGORY	CAREER HIGH
8, vs. Goshen, 12/16/2018	Minutes	8, vs. Goshen, 12/16/2018
2, two times	Points	2, two times
1, three times	Rebounds	1, three times
	Assists	
1, vs. IU Kokomo, 11/6/2018	Steals	1, vs. IU Kokomo, 11/6/2018
1, vs. IU Kokomo, 11/6/2018	Blocks	1, vs. IU Kokomo, 11/6/2018
1, two times	FG Made	1, two times
3, two times	FG Attempts	3, two times
	3-PT Made	
1, two times	3-PT Attempts	1, two times
	FT Made	
	FT Attempts	

## CAREER NOTES

- Majoring in General Studies
- Father Jemal played football at Central State

## PRIOR TO FORT WAYNE

- Was a 2016-17 All-Southwest Prairie Conference selection
- Named to the Record/Ledger Second Team All-Area as a junior
- Averaged 10.0 points, 4.0 rebounds and 1.7 assists per game her senior year
- Set a school record for free throws made in a season with 71

## ABOUT PLAINFIELD, ILLINOIS

- Population of 39,581
- Is a village that includes land in Plainfield and Wheatland townships

## ABOUT OSWEGO EAST HIGH SCHOOL

- Nickname is the Wolves

## SEASON STATS

Opponent	Date	gs	min	Total		3-Pointers		Free throws		Rebounds				pf	a	t/o	blk	stl	pts	avg
				fg-fga	pct	3fg-fga	pct	ft-fa	pct	off	def	tot	avg							
IU KOKOMO	11/06/18		4	1-3	.333	0-1	.000	0-0	.000	0	1	1	1.0	0	0	0	1	1	2	2.0
at Western Michigan	11/08/18		dnp	-	-	-	-	-	-	-	-	-	-	-	-	-	-	-	-	-
TAYLOR (IN)	11/12/18		1	0-1	.000	0-1	.000	0-0	.000	0	0	0	0.5	0	0	1	0	0	0	1.0
at Eastern Illinois	11/15/18		dnp	-	-	-	-	-	-	-	-	-	-	-	-	-	-	-	-	-
at Evansville	11/20/18		dnp	-	-	-	-	-	-	-	-	-	-	-	-	-	-	-	-	-
SIUE	11/24/18		dnp	-	-	-	-	-	-	-	-	-	-	-	-	-	-	-	-	-
at Loyola-Chicago	11/29/18		dnp	-	-	-	-	-	-	-	-	-	-	-	-	-	-	-	-	-
at Milwaukee	12/01/18		dnp	-	-	-	-	-	-	-	-	-	-	-	-	-	-	-	-	-
EASTERN MICHIGAN	12/08/18		dnp	-	-	-	-	-	-	-	-	-	-	-	-	-	-	-	-	-
GOSHEN	12/16/18		8	1-3	.333	0-0	.000	0-0	.000	0	1	1	0.7	0	0	0	0	0	2	1.3
VALPARAISO	12/19/18		dnp	-	-	-	-	-	-	-	-	-	-	-	-	-	-	-	-	-
at North Dakota State	12/28/18		dnp	-	-	-	-	-	-	-	-	-	-	-	-	-	-	-	-	-
at North Dakota	12/30/18		dnp	-	-	-	-	-	-	-	-	-	-	-	-	-	-	-	-	-
SOUTH DAKOTA STATE	01/03/19		0	0-0	.000	0-0	.000	0-0	.000	0	0	0	0.5	0	0	0	0	0	0	1.0
ORAL ROBERTS	01/09/19		dnp	-	-	-	-	-	-	-	-	-	-	-	-	-	-	-	-	-
at South Dakota	01/12/19		1	0-0	.000	0-0	.000	0-0	.000	0	1	1	0.6	1	0	0	0	0	0	0.8
at Western Illinois	01/19/19		dnp	-	-	-	-	-	-	-	-	-	-	-	-	-	-	-	-	-
OMAHA	01/24/19		dnp	-	-	-	-	-	-	-	-	-	-	-	-	-	-	-	-	-
DENVER	01/26/19		dnp	-	-	-	-	-	-	-	-	-	-	-	-	-	-	-	-	-
at Oral Roberts	01/30/19		dnp	-	-	-	-	-	-	-	-	-	-	-	-	-	-	-	-	-
SOUTH DAKOTA	02/02/19		dnp	-	-	-	-	-	-	-	-	-	-	-	-	-	-	-	-	-
WESTERN ILLINOIS	02/06/19		dnp	-	-	-	-	-	-	-	-	-	-	-	-	-	-	-	-	-
at Denver	02/13/19		dnp	-	-	-	-	-	-	-	-	-	-	-	-	-	-	-	-	-
at Omaha	02/16/19		dnp	-	-	-	-	-	-	-	-	-	-	-	-	-	-	-	-	-
at South Dakota State	02/20/19		dnp	-	-	-	-	-	-	-	-	-	-	-	-	-	-	-	-	-
Totals		0	14	2-7	.286	0-2	.000	0-0	.000	0	3	3	0.6	1	0	1	1	1	4	0.8

Games played: 5  
 Minutes/game: 2.8  
 Points/game: 0.8  
 FG Pct: 28.6  
 3FG Pct: 0.0

Rebounds/game: 0.6  
 Turnovers/game: 0.2  
 Steals/game: 0.2  
 Blocks/game: 0.2

## CAREER STATS

Season	gp-gs	min/avg	Total fg-fga	pct	3-Point fg-fga	pct	F-Throws ft-fta	pct	Rebounds off def tot	avg	pf	fo	ast	to	blk	stl	Scoring pts	avg
2018-19	5-0	14/2.8	2-7	.286	0-2	.000	0-0	.000	0	3	3	0.6	1	0	0	1	4	0.8
<b>TOTAL</b>	<b>5-0</b>	<b>14/2.8</b>	<b>2-7</b>	<b>.286</b>	<b>0-2</b>	<b>.000</b>	<b>0-0</b>	<b>.000</b>	<b>0</b>	<b>3</b>	<b>3</b>	<b>0.6</b>	<b>1</b>	<b>0</b>	<b>0</b>	<b>1</b>	<b>4</b>	<b>0.8</b>



**SOFIA  
RAJALA**

31

Sophomore | 6-0  
 Helsinki, Finland  
 Mäkelänrinne Sports

**FORWARD**

SEASON HIGH	CATEGORY	CAREER HIGH
5, vs. Goshen, 12/16/2018	Minutes	10, vs. Oral Roberts, 1/4/2018
2, at South Dakota, 1/12/2019	Points	4, at South Dakota, 1/13/2018
1, two times	Rebounds	2, three times
1, vs. Goshen, 12/16/2018	Assists	1, vs. Goshen, 12/16/2018
	Steals	
	Blocks	
1, at South Dakota, 1/12/2019	FG Made	1, three times
1, two times	FG Attempts	3, at #23 Michigan, 12/16/2017
	3-PT Made	1, vs. Western Illinois, 12/30/2017
	3-PT Attempts	3, at #23 Michigan, 12/16/2017
1, vs. Goshen, 12/16/2018	FT Made	4, at South Dakota, 1/13/2018
2, vs. Goshen, 12/16/2018	FT Attempts	4, at South Dakota, 1/13/2018

## CAREER NOTES

- Majoring in Psychology

## PRIOR TO FORT WAYNE

- Named to the Finnish National team in 2016
- Previously a member of the U16 and U18 Finnish National teams
- Led her team in scoring at the 2016 U18 European Championships
- Named the 2017 Finnish Korisliiga League Rookie of the Year

## ABOUT HELSINKI, FINLAND

- Population 642,045 | • Is the capital of Finland
- Helsinki is more known for its Art Nouveau architecture. It is considered the Design Capital of the world

## ABOUT FINLAND

- Population 5,509,717 | • Official language is Finnish
- Earn its Independence from Russia on December 6, 1917
- Finland is one of the countries with the most mature population. Half of voters are estimated to be over 50 years old
- In terms of medals and gold medals won per capita, Finland is the best performing country in Olympic history

## SEASON STATS

Opponent	Date	gs	min	Total fg-fga	pct	3-Pointers 3fg-fga	pct	Free throws ft-fa	pct	Rebounds off def tot	avg	pf	a	t/o	blk	stl	pts	avg
IU KOKOMO	11/06/18		dnp	-	-	-	-	-	-	-	-	-	-	-	-	-	-	-
at Western Michigan	11/08/18		dnp	-	-	-	-	-	-	-	-	-	-	-	-	-	-	-
TAYLOR (IN)	11/12/18		dnp	-	-	-	-	-	-	-	-	-	-	-	-	-	-	-
at Eastern Illinois	11/15/18		dnp	-	-	-	-	-	-	-	-	-	-	-	-	-	-	-
at Evansville	11/20/18		dnp	-	-	-	-	-	-	-	-	-	-	-	-	-	-	-
SIUE	11/24/18		dnp	-	-	-	-	-	-	-	-	-	-	-	-	-	-	-
at Loyola-Chicago	11/29/18		dnp	-	-	-	-	-	-	-	-	-	-	-	-	-	-	-
at Milwaukee	12/01/18	1		0-0	.000	0-0	.000	0-0	.000	0	0	0	0.0	0	0	0	0	0.0
EASTERN MICHIGAN	12/08/18		dnp	-	-	-	-	-	-	-	-	-	-	-	-	-	-	-
GOSHEN	12/16/18	5		0-0	.000	0-0	.000	1-2	.500	0	1	1	0.5	1	1	1	0	1
VALPARAISO	12/19/18		dnp	-	-	-	-	-	-	-	-	-	-	-	-	-	-	-
at North Dakota State	12/28/18		dnp	-	-	-	-	-	-	-	-	-	-	-	-	-	-	-
at North Dakota	12/30/18		dnp	-	-	-	-	-	-	-	-	-	-	-	-	-	-	-
SOUTH DAKOTA STATE	01/03/19	1		0-0	.000	0-0	.000	0-0	.000	0	0	0	0.3	0	0	0	0	0.3
ORAL ROBERTS	01/09/19		dnp	-	-	-	-	-	-	-	-	-	-	-	-	-	-	-
at South Dakota	01/12/19	3		1-1	1.000	0-0	.000	0-0	.000	1	0	1	0.5	0	0	0	0	2
at Western Illinois	01/19/19		dnp	-	-	-	-	-	-	-	-	-	-	-	-	-	-	-
OMAHA	01/24/19		dnp	-	-	-	-	-	-	-	-	-	-	-	-	-	-	-
DENVER	01/26/19		dnp	-	-	-	-	-	-	-	-	-	-	-	-	-	-	-
at Oral Roberts	01/30/19		dnp	-	-	-	-	-	-	-	-	-	-	-	-	-	-	-
SOUTH DAKOTA	02/02/19		dnp	-	-	-	-	-	-	-	-	-	-	-	-	-	-	-
WESTERN ILLINOIS	02/06/19		dnp	-	-	-	-	-	-	-	-	-	-	-	-	-	-	-
at Denver	02/13/19		dnp	-	-	-	-	-	-	-	-	-	-	-	-	-	-	-
at Omaha	02/16/19		dnp	-	-	-	-	-	-	-	-	-	-	-	-	-	-	-
at South Dakota State	02/20/19	2		0-1	.000	0-0	.000	0-0	.000	0	0	0	0.4	1	0	0	0	0.6
Totals		0	12	1-2	.500	0-0	.000	1-2	.500	1	1	2	0.4	2	1	1	0	0.6

Games played: 5  
 Minutes/game: 2.4  
 Points/game: 0.6  
 FG Pct: 50.0  
 FT Pct: 50.0

Rebounds/game: 0.4  
 Assists/game: 0.2  
 Turnovers/game: 0.2  
 Assist/turnover ratio: 1.0

## CAREER STATS

Season	gp-gs	min/avg	Total fg-fga	pct	3-Point fg-fga	pct	F-Throws ft-fa	pct	Rebounds off def tot	avg	pf	fo	ast	to	blk	stl	Scoring pts	avg
2017-18	10-1	52/5.2	3-12	.250	1-6	.167	6-6	1.000	5	2	7	0.7	7	0	0	5	13	1.3
2018-19	5-0	12/2.4	1-2	.500	0-0	.000	1-2	.500	1	1	2	0.4	2	0	1	1	3	0.6
TOTAL	15-1	64/4.3	4-14	.286	1-6	.167	7-8	.875	6	3	9	0.6	9	0	1	6	16	1.1



**KIERSTYN  
REPP**

Sophomore | 5-10  
 Archbold, Ohio  
 Archbold

32

GUARD

## CAREER NOTES

- Majoring in Business

## PRIOR TO FORT WAYNE

- Set school records for most three-point field goals made in a game (9), season (87) and in a career (180)
- Named All-NWOAL, Crescent News, District 7 and All-Northwest District Division III Player of the Year

## CAREER VS. NORTH DAKOTA

Season	gp-gs	min/avg	Total		3-Point		F-Throws			Rebounds				Scoring						
			fg-fga	pct	fg-fga	pct	ft-fga	pct		off	def	tot	avg	pts	pts	avg				
2018-19	1-1	28/28.0	1-11	.091	1-7	.143	0-0	.000		0	2	2	2.0	5	1	0	0	1	0	3
TOTAL	1-1	28/28.0	1-11	.091	1-7	.143	0-0	.000		0	2	2	2.0	5	1	0	0	1	0	3

SINGLE-GAME HIGHS [all-time ranking]:

Points: 3, at North Dakota -- 12/30/18

Rebounds: 2, at North Dakota -- 12/30/18

Blocks: 1, at North Dakota -- 12/30/18

FG made: 1, at North Dakota -- 12/30/18

FG attempts: 11, at North Dakota -- 12/30/18

3FG made: 1, at North Dakota -- 12/30/18

3FG attempts: 7, at North Dakota -- 12/30/18

## SEASON STATS

Opponent	Date	gs	min	Total		3-Pointers		Free throws		Rebounds				pf	a	t/o	blk	stl	pts	avg	
				fg-fga	pct	3fg-fga	pct	ft-fga	pct	off	def	tot	avg								
IU KOKOMO	11/06/18	*	30	5-12	.417	3-10	.300	0-0	.000	0	2	2	2.0	3	1	2	1	2	13	13.0	
at Western Michigan	11/08/18	*	31	3-8	.375	3-7	.429	0-0	.000	0	4	4	3.0	2	0	2	0	1	9	11.0	
TAYLOR (IN)	11/12/18	*	14	3-5	.600	1-3	.333	0-0	.000	0	2	2	2.7	2	1	1	1	0	7	9.7	
at Eastern Illinois	11/15/18	*	32	6-13	.462	5-10	.500	0-0	.000	0	4	4	3.0	2	1	2	0	1	17	11.5	
at Purdue	11/18/18	*	28	2-12	.167	0-6	.000	0-0	.000	0	1	1	2.6	5	0	2	1	1	4	10.0	
at Evansville	11/20/18	*	36	5-11	.455	4-9	.444	2-2	1.000	0	7	7	3.3	1	3	3	0	0	16	11.0	
SIUE	11/24/18	*	30	1-7	.143	0-6	.000	0-0	.000	0	4	4	3.4	2	0	0	0	0	2	9.7	
at Loyola-Chicago	11/29/18	*	9	1-1	1.000	1-1	1.000	0-0	.000	0	0	0	3.0	0	0	0	0	0	3	8.9	
at Milwaukee	12/01/18	*	36	4-8	.500	3-6	.500	1-2	.500	0	2	2	2.9	1	0	0	0	2	12	9.2	
EASTERN MICHIGAN	12/08/18	*	40	5-10	.500	4-8	.500	3-4	.750	0	0	0	2.6	1	0	2	0	3	17	10.0	
GOSHEN	12/16/18	*	38	8-16	.500	4-9	.444	0-0	.000	0	2	2	2.5	1	3	1	2	0	20	10.9	
VALPARAISO	12/19/18	*	37	4-13	.308	3-10	.300	2-2	1.000	0	1	1	2.4	1	2	2	0	0	13	11.1	
at North Dakota State	12/28/18	*	35	2-9	.222	2-6	.333	2-2	1.000	0	2	2	2.4	2	2	0	0	0	8	10.8	
at North Dakota	12/30/18	*	28	1-11	.091	1-7	.143	0-0	.000	0	2	2	2.4	5	0	0	1	0	3	10.3	
SOUTH DAKOTA STATE	01/03/19	*	31	3-8	.375	2-5	.400	0-0	.000	0	1	1	2.3	1	1	1	0	0	8	10.1	
ORAL ROBERTS	01/09/19	*	28	2-7	.286	1-5	.200	2-2	1.000	0	0	0	2.1	3	1	0	0	0	7	9.9	
at South Dakota	01/12/19	*	32	1-7	.143	1-6	.167	0-0	.000	0	2	2	2.1	0	0	0	0	0	3	9.5	
at Western Illinois	01/19/19	*	35	3-13	.231	2-9	.222	0-0	.000	0	3	3	2.2	2	1	2	0	0	8	9.4	
OMAHA	01/24/19	*	17	0-5	.000	0-3	.000	0-0	.000	0	2	2	2.2	1	0	0	0	0	0	8.9	
DENVER	01/26/19	*	29	3-9	.333	3-8	.375	0-0	.000	0	3	3	2.2	5	1	2	0	1	9	9.0	
at Oral Roberts	01/30/19	*	31	6-12	.500	3-7	.429	0-0	.000	1	3	4	2.3	2	2	0	0	2	15	9.2	
SOUTH DAKOTA	02/02/19	*	39	3-5	.600	3-5	.600	0-0	.000	0	1	1	2.2	2	0	2	0	0	9	9.2	
WESTERN ILLINOIS	02/06/19	*	36	6-16	.375	4-12	.333	0-0	.000	0	1	1	2.2	1	1	1	0	2	16	9.5	
at Denver	02/13/19	*	35	2-9	.222	2-8	.250	2-2	1.000	0	0	0	2.1	2	1	1	0	3	8	9.5	
at Omaha	02/16/19	*	36	4-10	.400	2-8	.250	0-0	.000	0	3	3	2.1	2	0	0	0	0	10	9.5	
at South Dakota State	02/20/19	*	36	6-11	.545	4-8	.500	0-0	.000	1	3	4	2.2	2	1	1	0	0	16	9.7	
Totals			23	809	89-248	.359	61-182	.335	14-16	.875	2	55	57	2.2	51	22	27	6	18	253	9.7

Games played: 26

Minutes/game: 31.1

Points/game: 9.7

FG Pct: 35.9

3FG Pct: 33.5

FT Pct: 87.5

Rebounds/game: 2.2

Assists/game: 0.8

Turnovers/game: 1.0

Assist/turnover ratio: 0.8

Steals/game: 0.7

Blocks/game: 0.2

## CAREER STATS

			Total		3-Point		F-Throws		Rebounds											Scoring	
Season	gp-gs	min/avg	fg-fga	pct	fg-fga	pct	ft-fga	pct	off	def	tot	avg	pf	fo	ast	to	blk	stl	pts	avg	
2017-18	28-14	750/26.8	75-220	.341	61-183	.333	11-15	.733	12	58	70	2.5	53	1	19	33	4	12	222	7.9	
2018-19	26-23	809/31.1	89-248	.359	61-182	.335	14-16	.875	2	55	57	2.2	51	3	22	27	6	18	253	9.7	
TOTAL	54-37	1559/28.9	164-468	.350	122-365	.334	25-31	.806	14	113	127	2.4	104	4	41	60	10	30	475	8.8	

SEASON HIGH	CATEGORY	CAREER HIGH
40, vs. Eastern Michigan, 12/8/2018	Minutes	40, vs. Eastern Michigan, 12/8/2018
20, vs. Goshen, 12/16/2018	Points	23, at North Dakota State, 1/20/2018
7, at Evansville, 11/20/2018	Rebounds	7, at Evansville, 11/20/2018
3, two times	Assists	3, two times
3, two times	Steals	3, two times
2, vs. Goshen, 12/16/2018	Blocks	2, two times
8, vs. Goshen, 12/16/2018	FG Made	8, two times
16, two times	FG Attempts	16, two times
5, at Eastern Illinois, 11/15/2018	3-PT Made	7, at North Dakota State, 1/20/2018
12, vs. Western Illinois, 2/6/2019	3-PT Attempts	13, at Coastal Carolina, 12/4/2017
3, vs. Eastern Michigan, 12/8/2018	FT Made	3, three times
4, vs. Eastern Michigan, 12/8/2018	FT Attempts	5, vs. UIC, 11/21/2017

## ABOUT ARCHBOLD, OHIO

- Population 4,346 | Founded 1866
- A more well known former residents of Archbold include current NASCAR driver Sam Hornish Jr.
- Home to Sauder Woodworking Company, fifth largest residential furniture manufacturer in America and the world's leading manufacturer of ready-to-assemble furniture.

## ABOUT ARCHBOLD HIGH SCHOOL

- Nicknamed the Blue Streaks.
- Holds eight state titles across four difference sports.
- Women's basketball owns 11 NWOAL championship titles



# PURDUE FORT WAYNE SEASON STATS

RECORD:	OVERALL	HOME	AWAY	NEUTRAL
ALL GAMES	6-20	5-7	1-13	0-0
CONFERENCE	2-12	2-4	0-8	0-0
NON-CONFERENCE	4-8	3-3	1-5	0-0

#	Player	gp-gs	min	avg	Total		3-Point		F-Throw		Rebounds				pf	dq	a	to	blk	stl	pts	avg
					fg-fga	fg%	3fg-fga	3fg%	ft-fa	ft%	off	def	tot	avg								
00	Jaelencia Williams	26-7	472	18.2	86-174	.494	0-2	.000	56-104	.538	54	78	132	5.1	69	0	8	49	38	4	228	8.8
03	Sierra Bell	21-0	354	16.9	38-113	.336	8-32	.250	41-49	.837	14	45	59	2.8	56	3	53	59	2	19	125	6.0
04	Ellie Dykstra	22-1	148	6.7	11-26	.423	0-2	.000	3-6	.500	9	13	22	1.0	19	0	1	10	6	4	25	1.1
05	Hannah Hess	24-3	470	19.6	39-108	.361	18-64	.281	13-14	.929	12	51	63	2.6	35	0	26	31	2	15	109	4.5
10	Hannah Albrecht	26-25	761	29.3	78-202	.386	26-72	.361	32-39	.821	13	54	67	2.6	51	1	40	61	0	11	214	8.2
12	Anna Lappenkuper	26-26	790	30.4	53-148	.358	18-62	.290	14-22	.636	19	44	63	2.4	49	1	66	77	7	39	138	5.3
13	De'Jour Young	26-26	861	33.1	114-260	.438	29-85	.341	67-96	.698	58	109	167	6.4	68	2	55	73	12	38	324	12.5
14	Sh'Toya Sanders	23-19	501	21.8	77-165	.467	0-1	.000	36-68	.529	63	98	161	7.0	70	1	8	44	36	27	190	8.3
15	Camara Douglas	2-0	8	4.0	1-4	.250	0-0	.000	2-2	1.000	1	2	3	1.5	4	0	0	0	1	0	4	2.0
23	Amaya Johns	5-0	14	2.8	2-7	.286	0-2	.000	0-0	.000	0	3	3	0.6	1	0	0	1	1	1	4	0.8
31	Sofia Rajala	5-0	12	2.4	1-2	.500	0-0	.000	1-2	.500	1	1	2	0.4	2	0	1	1	0	0	3	0.6
32	Kierstyn Repp	26-23	809	31.1	89-248	.359	61-182	.335	14-16	.875	2	55	57	2.2	51	3	22	27	6	18	253	9.7
Team											43	45	88				11					
Total.....		26	5200		589-1457	.404	160-504	.317	279-418	.667	289	598	887	34.1	475	11	280	444	111	176	1617	62.2
Opponents.....		26	5200		656-1534	.428	173-518	.334	354-491	.721	321	621	942	36.2	415	6	363	346	84	220	1839	70.7

TEAM STATISTICS	PFW	OPP
SCORING	1617	1839
Points per game	62.2	70.7
Scoring margin	-8.5	-
FIELD GOALS-ATT	589-1457	656-1534
Field goal pct	.404	.428
3 POINT FG-ATT	160-504	173-518
3-point FG pct	.317	.334
3-pt FG made per game	6.2	6.7
FREE THROWS-ATT	279-418	354-491
Free throw pct	.667	.721
F-Throws made per game	10.7	13.6
REBOUNDS	887	942
Rebounds per game	34.1	36.2
Rebounding margin	-2.1	-
ASSISTS	280	363
Assists per game	10.8	14.0
TURNOVERS	444	346
Turnovers per game	17.1	13.3
Turnover margin	-3.8	-
Assist/turnover ratio	0.6	1.0
STEALS	176	220
Steals per game	6.8	8.5
BLOCKS	111	84
Blocks per game	4.3	3.2
ATTENDANCE	6234	15980
Home games-Avg/Game	12-520	14-1141
Neutral site-Avg/Game	-	0-0

Date	Opponent		Score	Att.
11/06/18	IU KOKOMO	w	87-50	983
11/08/18	at Western Michigan	L	61-69	560
11/12/18	TAYLOR (IN)	w	84-74	441
11/15/18	at Eastern Illinois	L	63-72	139
11/18/18	at Purdue	L	44-78	5970
11/20/18	at Evansville	w	72-66	294
11/24/18	SIUE	L	49-57	351
11/29/18	at Loyola-Chicago	L	67-81	1203
12/01/18	at Milwaukee	L	48-70	481
12/08/18	EASTERN MICHIGAN	L	72-87	351
12/16/18	GOSHEN	w	86-45	181
12/19/18	VALPARAISO	L	64-68	449
* 12/28/18	at North Dakota State	L	54-70	280
* 12/30/18	at North Dakota	L	60-79	1333
* 01/03/19	SOUTH DAKOTA STATE	L	52-85	529
* 01/09/19	ORAL ROBERTS	L	61-72	302
* 01/12/19	at South Dakota	L	51-69	2105
* 01/19/19	at Western Illinois	L	59-73	521
* 01/24/19	OMAHA	w	56-48	418
* 01/26/19	DENVER	w	70-55	1536
* 01/30/19	at Oral Roberts	L	56-66	1002
* 02/02/19	SOUTH DAKOTA	L	49-71	345
* 02/06/19	WESTERN ILLINOIS	L	61-90	348
* 02/13/19	at Denver	L	62-82	201
* 02/16/19	at Omaha	L	61-70	437
* 02/20/19	at South Dakota State	L	68-92	1454

\* = Conference game

^ = at Memorial Coliseum

Score by Periods	1st	2nd	3rd	4th	Totals
Purdue Fort Wayne	369	367	426	455	1617
Opponents	432	463	458	486	1839

# PURDUE FORT WAYNE SUMMIT LEAGUE STATS

RECORD:	OVERALL	HOME	AWAY	NEUTRAL
ALL GAMES	2-12	2-4	0-8	0-0
CONFERENCE	2-12	2-4	0-8	0-0
NON-CONFERENCE	0-0	0-0	0-0	0-0

#	Player	gp-gs	min	avg	Total		3-Point		F-Throw		Rebounds				pf	dq	a	to	blk	stl	pts	avg
					fg-fga	fg%	3fg-fga	3fg%	ft-fta	ft%	off	def	tot	avg								
00	Jaelencia Williams	14-2	238	17.0	43-98	.439	0-2	.000	23-40	.575	27	47	74	5.3	38	0	3	23	22	1	109	7.8
03	Sierra Bell	13-0	232	17.8	20-65	.308	5-21	.238	29-33	.879	8	26	34	2.6	36	3	35	43	0	6	74	5.7
04	Ellie Dykstra	11-0	71	6.5	3-13	.231	0-1	.000	2-4	.500	5	4	9	0.8	7	0	0	6	3	2	8	0.7
05	Hannah Hess	12-0	199	16.6	10-40	.250	4-23	.174	7-7	1.000	10	18	28	2.3	11	0	6	14	0	4	31	2.6
10	Hannah Albrecht	14-14	405	28.9	41-107	.383	16-41	.390	25-30	.833	8	35	43	3.1	30	0	18	37	0	5	123	8.8
12	Anna Lappenkuper	14-14	415	29.6	26-72	.361	6-27	.222	9-14	.643	5	20	25	1.8	27	1	26	45	3	21	67	4.8
13	De'Jour Young	14-14	459	32.8	62-142	.437	16-46	.348	22-32	.688	29	57	86	6.1	38	1	32	38	5	18	162	11.6
14	Sh'Toya Sanders	14-12	324	23.1	49-102	.480	0-1	.000	26-50	.520	42	69	111	7.9	43	1	3	31	25	16	124	8.9
15	Camara Douglas	1-0	2	2.0	0-1	.000	0-0	.000	0-0	.000	0	1	1	1.0	1	0	0	0	0	0	0	0.0
23	Amaya Johns	2-0	1	0.5	0-0	.000	0-0	.000	0-0	.000	0	1	1	0.5	1	0	0	0	0	0	0	0.0
31	Sofia Rajala	3-0	6	2.0	1-2	.500	0-0	.000	0-0	.000	1	0	1	0.3	1	0	0	0	0	0	2	0.7
32	Kierstyn Repp	14-14	448	32.0	42-132	.318	30-97	.309	6-6	1.000	2	26	28	2.0	30	2	11	10	1	8	120	8.6
Team											24	22	46					8				
Total.....		14	2800		297-774	.384	77-259	.297	149-216	.690	161	326	487	34.8	263	8	134	255	59	81	820	58.6
Opponents.....		14	2800		368-834	.441	86-268	.321	200-272	.735	165	338	503	35.9	219	4	194	157	46	134	1022	73.0

TEAM STATISTICS	PFW	OPP
SCORING	820	1022
Points per game	58.6	73.0
Scoring margin	-14.4	-
FIELD GOALS-ATT	297-774	368-834
Field goal pct	.384	.441
3 POINT FG-ATT	77-259	86-268
3-point FG pct	.297	.321
3-pt FG made per game	5.5	6.1
FREE THROWS-ATT	149-216	200-272
Free throw pct	.690	.735
F-Throws made per game	10.6	14.3
REBOUNDS	487	503
Rebounds per game	34.8	35.9
Rebounding margin	-1.1	-
ASSISTS	134	194
Assists per game	9.6	13.9
TURNOVERS	255	157
Turnovers per game	18.2	11.2
Turnover margin	-7.0	-
Assist/turnover ratio	0.5	1.2
STEALS	81	134
Steals per game	5.8	9.6
BLOCKS	59	46
Blocks per game	4.2	3.3
ATTENDANCE	3478	7333
Home games-Avg/Game	6-580	8-917
Neutral site-Avg/Game	-	0-0

Date	Opponent		Score	Att.
* 12/28/18	at North Dakota State	L	54-70	280
* 12/30/18	at North Dakota	L	60-79	1333
* 01/03/19	SOUTH DAKOTA STATE	L	52-85	529
* 01/09/19	ORAL ROBERTS	L	61-72	302
* 01/12/19	at South Dakota	L	51-69	2105
* 01/19/19	at Western Illinois	L	59-73	521
* 01/24/19	OMAHA	W	56-48	418
* 01/26/19	DENVER	W	70-55	1536
* 01/30/19	at Oral Roberts	L	56-66	1002
* 02/02/19	SOUTH DAKOTA	L	49-71	345
* 02/06/19	WESTERN ILLINOIS	L	61-90	348
* 02/13/19	at Denver	L	62-82	201
* 02/16/19	at Omaha	L	61-70	437
* 02/20/19	at South Dakota State	L	68-92	1454

\* = Conference game

^ = at Memorial Coliseum

Score by Periods	1st	2nd	3rd	4th	Totals
Purdue Fort Wayne	193	173	214	240	820
Opponents	237	248	264	273	1022

## TV/RADIO ROSTER



**#00 JAELENCIA WILLIAMS**  
6-2 | Center | So.  
Indianapolis, Indiana



**#3 SIERRA BELL**  
5-7 | Guard | Jr.  
Danville, Illinois



**#4 ELLIE DYKSTRA**  
6-1 | Forward | Fr.  
Byron Center, Michigan



**#5 HANNAH HESS**  
5-10 | Guard | R-So.  
Oregon, Ohio



**#10 HANNAH ALBRECHT**  
5-7 | Guard | Jr.  
Crown Point, Indiana



**#12 ANNA LAPPENKÜPER**  
5-9 | Guard | Jr.  
Herne, Germany



**#13 De'JOUR YOUNG**  
5-7 | Guard | Sr.  
Fort Wayne, Indiana



**#14 SH'TOYA SANDERS**  
6-0 | Forward | R-Jr.  
Fort Wayne, Indiana



**#15 CAMARA DOUGLAS**  
5-11 | Forward | Fr.  
San Diego, California



**#23 AMAYA JOHNS**  
5-9 | Guard | Fr.  
Plainfield, Illinois



**#31 SOFIA RAJALA**  
6-0 | Forward | So.  
Helsinki, Finland



**#32 KIERSTYN REPP**  
5-10 | Guard | So.  
Archbold, Ohio



**NIECEE NELSON**  
Head Coach  
Head Coach (3rd Season)  
Concordia Portland '02



**MARCIE ALBERTS**  
Assistant Coach  
Ohio State '97



**HALEY SEIBERT**  
Assistant Coach  
IPFW '15



**AKILAH SIMS**  
Assistant Coach  
IUPUI '16



**KENDALL FESTERVAND**  
Graduate Manager  
U of Texas at Dallas '18

## PRONUNCIATIONS

#00 - Jaelencia - JUH-len-see-uh

#12 - Anna Lappenküper - AHH-nuh LAH-pen-cooper

#13 - De'Jour - D-zuhr

#14 Sh'Toya - SHU-toy-yuh

#23 Amaya - UH-my-uh

#31 - Rajala - RUH-jah-Luh

#32 - Repp - Rep

Niecee - KNEE-see

Seibert - sigh-BURT





# PURDUE FORT WAYNE MASTODONS

OVERALL	LEAGUE	NON-LEAGUE	HOME	AWAY	NEUTRAL
6-20	2-12	4-8	5-7	1-13	0-0

**Head Coach:** Niecee Nelson  
**Alma Mater:** Concordia (OR) '02  
Record at Fort Wayne: 15-68 (3 years)  
**42nd Season in Program History**  
**All-Time Record:** 471-672

**Assistant Coaches:** Marcie Alberts,  
Haley Seibert and Akilah Sims  
**Team Captains:** De'Jour Young



## 00 • JAELENCIA WILLIAMS • (JUH-len-see-uh) • C • Fr. • 6-2 • Indianapolis, Ind. • Southport

Season	GP	GS	MPG	Pts	PPG	RPG	Ast	Blk	Stl	FG%	3FG%	FT%
	26	7	18.2	228	8.8	5.08	8	38	4	.494	.000	.538
Career	GP	GS	MPG	Pts	PPG	RPG	Ast	Blk	Stl	FG%	3FG%	FT%
	54	22	18.3	457	8.5	4.98	18	64	11	.486	.400	.594

Season High	Career High	Career Notes
23, vs Oral Roberts, 1/9/19	Pts.....23, vs Oral Roberts, 1/9/19	Double-Double.....1
15, vs Oral Roberts, 1/9/19	Reb.....15, vs Oral Roberts, 1/9/19	20-point games.....12
3, at Milwaukee, 12/1/18	Ast.....3, two times	10-point games.....20
1, three times	Stl.....2, at Belmont, 11/15/17	10-rebound games.....2
7, vs Denver, 1/26/19	Blk.....7, vs Denver, 1/26/19	Games with a block.....36
9, vs Oral Roberts, 1/9/19	FG.....9, vs Oral Roberts, 1/9/19	5-5 games.....1
9, vs Eastern Michigan, 12/8/18	FT.....9, vs Eastern Michigan, 12/8/18	



## 3 • SIERRA BELL • G • Jr. • 5-7 • Danville, Ill. • Northeast C.C.

Season	GP	GS	MPG	Pts	PPG	RPG	Ast	Blk	Stl	FG%	3FG%	FT%
	21	0	16.9	125	6.0	2.81	53	2	19	.336	.250	.837
Career	GP	GS	MPG	Pts	PPG	RPG	Ast	Blk	Stl	FG%	3FG%	FT%
	21	0	16.9	125	6.0	2.81	53	2	19	.336	.250	.837

Season High	Career High	Career Notes
15, vs IU Kokomo, 11/6/18	Pts.....15, vs IU Kokomo, 11/6/18	10-point games.....2
8, vs IU Kokomo, 11/6/18	Reb.....8, vs IU Kokomo, 11/6/18	5-point games.....13
9, vs Oral Roberts, 1/9/19	Ast.....9, vs Oral Roberts, 1/9/19	5-rebound games.....6
8, vs IU Kokomo, 11/6/18	Stl.....8, vs IU Kokomo, 11/6/18	5-assist games.....3
5, vs IU Kokomo, 11/6/18	FG.....5, vs IU Kokomo, 11/6/18	3-steal games.....1
2, two times	3PT.....2, two times	5-5 games.....3
7, two times	FT.....7, two times	



## 4 • ELLIE DYKSTRA • F • Fr. • 6-1 • Byron Center Mich. • Byron Center

Season	GP	GS	MPG	Pts	PPG	RPG	Ast	Blk	Stl	FG%	3FG%	FT%
	22	1	6.7	25	1.1	1.00	1	6	4	.423	.000	.500
Career	GP	GS	MPG	Pts	PPG	RPG	Ast	Blk	Stl	FG%	3FG%	FT%
	22	1	6.7	25	1.1	1.00	1	6	4	.423	.000	.500

Season High	Career High	Career Notes
6, vs Eastern Michigan, 12/8/18	Pts.....6, vs Eastern Michigan, 12/8/18	5-point games.....2
7, vs IU Kokomo, 11/6/18	Reb.....7, vs IU Kokomo, 11/6/18	5-rebound games.....1
1, at Western Michigan, 11/8/18	Ast.....1, at Western Michigan, 11/8/18	
2, vs South Dakota State, 1/3/19	Stl.....2, vs South Dakota State, 1/3/19	
2, vs IU Kokomo, 11/6/18	Blk.....2, vs IU Kokomo, 11/6/18	
3, vs Eastern Michigan, 12/8/18	FG.....3, vs Eastern Michigan, 12/8/18	
1, two times	FT.....1, two times	



## 5 • HANNAH HESS • G • So. • 5-9 • Oregon, Ohio • Clay H.S.

Season	GP	GS	MPG	Pts	PPG	RPG	Ast	Blk	Stl	FG%	3FG%	FT%
	24	3	19.6	109	4.5	2.63	26	2	15	.361	.281	.929
Career	GP	GS	MPG	Pts	PPG	RPG	Ast	Blk	Stl	FG%	3FG%	FT%
	51	5	16.4	206	4.0	1.88	41	4	25	.330	.275	.913

Season High	Career High	Career Notes
16, vs Taylor, 11/12/18	Pts.....16, vs Taylor, 11/12/18	10-point games.....5
7, three times	Reb.....7, three times	5-point games.....19
7, at Eastern Illinois, 11/15/18	Ast.....7, at Eastern Illinois, 11/15/18	5-rebound games.....4
3, vs Taylor, 11/12/18	Stl.....3, vs Taylor, 11/12/18	3-three's games.....5
6, vs Taylor, 11/12/18	FG.....6, vs Taylor, 11/12/18	3-steal games.....1
4, vs Taylor, 11/12/18	3PT.....4, vs Taylor, 11/12/18	
3, vs Eastern Michigan, 12/8/18	FT.....3, two times	



## 10 • HANNAH ALBRECHT • G • Fr. • 5-7 • Crown Point, Ind. • Saint Joseph's (IN)

Season	GP	GS	MPG	Pts	PPG	RPG	Ast	Blk	Stl	FG%	3FG%	FT%
	26	25	29.3	214	8.2	2.58	40	0	11	.386	.361	.821
Career	GP	GS	MPG	Pts	PPG	RPG	Ast	Blk	Stl	FG%	3FG%	FT%
	53	51	30.1	410	7.7	2.74	93	5	31	.388	.386	.826

Season High	Career High	Career Notes
21, at Omaha, 2/16/19	Pts.....23, at Maryville, 1/5/17 *	20-point games.....2
6, two times	Reb.....7, two times *	10-point games.....16
5, vs Valparaiso, 12/19/18	Ast.....8, vs Bellarmine, 1/28/17 *	5-rebound games.....9
2, at Western Michigan 11/8/18	Stl.....3, six times *	5-assist games.....2
8, at Omaha, 2/16/19	FG.....10, vs Bellarmine, 12/8/17 *	3-three's games.....5
3, three times	3PT.....3, eight times *	3-steal games.....2
8, vs Denver, 1/26/19	FT.....8, vs Denver, 1/26/19	



## 12 • ANNA LAPPENKÜPER • (AHH-nuh LAH-pen-cooper) • G • So. • 5-8 • Herne, Germany • Otto Hahn Gymnasium

Season	GP	GS	MPG	Pts	PPG	RPG	Ast	Blk	Stl	FG%	3FG%	FT%
	26	26	30.4	138	5.3	2.42	66	7	39	.358	.290	.636
Career	GP	GS	MPG	Pts	PPG	RPG	Ast	Blk	Stl	FG%	3FG%	FT%
	82	77	30.0	524	6.4	2.43	166	11	81	.362	.272	.748

Season High	Career High	Career Notes
20, at Denver, 2/13/19	Pts.....20, at Denver, 2/13/19	10-point games.....1
5, two times	Reb.....6, at Illinois, 11/10/17	10-point games.....22
7, vs Goshen, 12/16/18	Ast.....7, two times	5-rebound games.....8
4, at North Dakota, 12/30/18	Stl.....4, at North Dakota, 12/30/18	5-assist games.....8
8, at Denver, 2/13/19	FG.....8, at Denver, 2/13/19	3-three's games.....5
3, two times	3PT.....3, five times	3-steal games.....8
4, two times	FT.....8, vs Loyola-Chicago, 11/12/17	



## 13 • De'JOUR YOUNG • (D-zhur) • G • Jr. • 5-7 • Fort Wayne, Ind. • Concordia Lutheran

Season	GP	GS	MPG	Pts	PPG	RPG	Ast	Blk	Stl	FG%	3FG%	FT%
	26	26	33.1	324	12.5	6.42	55	12	38	.438	.341	.698
Career	GP	GS	MPG	Pts	PPG	RPG	Ast	Blk	Stl	FG%	3FG%	FT%
	111	100	29.8	1169	10.5	5.30	193	42	132	.404	.273	.742

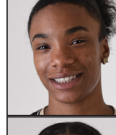
Season High	Career High	Career Notes
25, vs Omaha, 1/24/19	Pts.....25, vs Omaha, 1/24/19	Double-Double.....6
14, two times	Reb.....14, two times	20-point games.....9
4, four times	Ast.....5, three times	10-point games.....58
6, vs Western Illinois, 2/6/19	Stl.....6, vs Western Illinois, 2/6/19	10-rebound games.....8
10, vs Omaha, 1/24/19	FG.....10, vs Omaha, 1/24/19	5-assist games.....3
3, at Loyola-Chicago, 11/29/18	3PT.....3, two times	5-5 games.....4
8, vs Eastern Michigan, 12/8/18	FT.....8, two times	



## 14 • Sh'TOYA SANDERS • (SHU-toy-yuh) • F • Jr. • 6-0 • Fort Wayne, Ind. • Chicago State

Season	GP	GS	MPG	Pts	PPG	RPG	Ast	Blk	Stl	FG%	3FG%	FT%
	23	19	21.8	190	8.3	7.00	8	36	27	.467	.000	.529
Career	GP	GS	MPG	Pts	PPG	RPG	Ast	Blk	Stl	FG%	3FG%	FT%
	23	19	21.8	190	8.3	7.00	8	36	27	.467	.000	.529

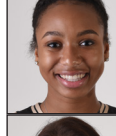
Season High	Career High	Career Notes
14, at South Dakota State, 2/20/19	Pts.....38, at Northern Illinois, 11/22/16 *	Double-Double.....2
12, two times	Reb.....23, at Northern Illinois, 11/22/16 *	10-point games.....11
2, three times	Ast.....3, three times *	5-point games.....18
3, two times	Stl.....5, three times *	10-rebound games.....4
5, two times	Blk.....5, two times *	5-rebound games.....17
6, three times	FG.....11, at Northern Illinois, 11/22/16 *	Games with a block.....15
4, five times	FT.....15, at Northern Illinois, 11/22/16 *	



## 15 • CAM DOUGLAS • F • Fr. • 5-11 • San Diego, Calif. • Mount Miguel

Season	GP	GS	MPG	Pts	PPG	RPG	Ast	Blk	Stl	FG%	3FG%	FT%
	2	0	4.0	4	2.0	1.50	0	1	0	.250	.000	1.000
Career	GP	GS	MPG	Pts	PPG	RPG	Ast	Blk	Stl	FG%	3FG%	FT%
	2	0	4.0	4	2.0	1.50	0	1	0	.250	.000	1.000

Season High	Career High	Career Notes
4, vs Goshen, 12/16/18	Pts.....4, vs Goshen, 12/16/18	
2, vs Goshen, 12/16/18	Reb.....2, vs Goshen, 12/16/18	
1, vs Goshen, 12/16/18	Ast.....1, vs Goshen, 12/16/18	
1, vs Goshen, 12/16/18	Blk.....1, vs Goshen, 12/16/18	
1, vs Goshen, 12/16/18	FG.....1, vs Goshen, 12/16/18	
2, vs Goshen, 12/16/18	FT.....2, vs Goshen, 12/16/18	

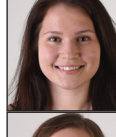


## 23 • AMAYA JOHNS • (UH-my-uh) • G • Fr. • 5-9 • Plainfield, Ill. • Oswego East

Season	GP	GS	MPG	Pts	PPG	RPG	Ast	Blk	Stl	FG%	3FG%	FT%
	5	0	2.8	4	0.8	0.60	0	1	1	.286	.000	.000
Career	GP	GS	MPG	Pts	PPG	RPG	Ast	Blk	Stl	FG%	3FG%	FT%
	5	0	2.8	4	0.8	0.60	0	1	1	.286	.000	.000

31 SOFIA BALAJA / DIUH iah Luhl, E-Er -6.0- Helsinki, Finland, Mäkelänpolttor Sport

Season High	Career High	Career Notes
2, two times	Pts.....2, two times	
1, three times	Reb.....1, three times	
1, two times	Ast.....1, two times	
1, two times	Stl.....1, two times	
1, two times	FG.....1, two times	
1, two times	3PT.....1, two times	
1, two times	FT.....1, two times	



## 31 • SOFIA RAJALA • (RUH-jah-Luh) • F • Fr. • 6-0 • Helsinki, Finland • Mäkelänrinne Sports

Season	GP	GS	MPG	Pts	PPG	RPG	Ast	Blk	Stl	FG%	3FG%	FT%
	5	0	2.4	3	0.6	0.40	1	0	0	.500	.000	.500
Career	GP	GS	MPG	Pts	PPG	RPG	Ast	Blk	Stl	FG%	3FG%	FT%
	15	1	4.3	16	1.1	0.60	1	0	0	.286	.167	.875

32. KIERSTYN REPP. (Bon). G. Fr. 5-10. Archbold, Ohio. Archbold

Season High	Career High	Career Notes
2, at South Dakota, 1/12/19	Pts.....4, at South Dakota, 1/13/18	Member of the Finish National Team.
1, two times	Reb.....2, three times	
1, vs Goshen, 12/16/18	Ast.....1, vs Goshen, 12/16/18	
1, at South Dakota, 1/12/19	Blk.....1, two times	Missed most of the 2017-18 season due to injury.
1, vs Goshen, 12/16/18	FG.....1, vs Western Illinois, 12/30/17	
1, vs Goshen, 12/16/18	3PT.....4, at South Dakota, 1/13/18	
1, vs Goshen, 12/16/18	FT.....4, at South Dakota, 1/13/18	



## 32 • KIERSTYN REPP • (Rep) • G • Fr. • 5-10 • Archbold, Ohio • Archbold

Season	GP	GS	MPG	Pts	PPG	RPG	Ast	Blk	Stl	FG%	3FG%	FT%
	26	23	31.1	253	9.7	2.19	22	6	18	.359	.335	.875
Career	GP	GS	MPG	Pts	PPG	RPG	Ast	Blk	Stl	FG%	3FG%	FT%
	54	37	28.9	475	8.8	2.35	41	10	30	.350	.334	.806

**NIECEE NELSON** • Head Coach • **Career Record:** 15-68 • **Alma Mater:** Concordia Portland '01

Season High	Career High	Career Notes
20, vs Goshen, 12/16/18	Pts.....23, at North Dakota State, 1/20/18	20-point games.....2
7, at Evansville, 11/20/18	Reb.....7, at Evansville, 11/20/18	10-point games.....21
3, two times	Ast.....3, two times	5-point games.....35
3, two times	Stl.....3, two times	3-steal games.....2
8, vs Goshen, 12/16/18	FG.....8, two times	3-three's games.....23
5, at Eastern Illinois, 11/15/18	3PT.....7, at North Dakota State, 1/20/18	Games with a 3.....39
3, vs Eastern Michigan, 12/8/18	FT.....3, three times	



## NIECEE NELSON • Head Coach • Career Record: 15-68 • Alma Mater: Concordia Portland '02

• KNEE-see • Enters 3rd season at the helm of the program. Named head coach on April 18, 2016.  
• 14th head coach in program history. • Was an assistant at Fort Wayne during 2004-05 season.  
• Played four years at Concordia. 2000-01 NAIA All-American and 1997-98 Conference Freshman of the Year.

• Was an assistant coach at the University of San Diego for 11 seasons.  
• Helped lead San Diego to an overall record of 222-124 since 2005, including five consecutive 20-win seasons and WNIT appearances.  
• Niecee and her husband, Steve, have two children: son Sebastian and daughter Skyler.