

PURDUE — FORT WAYNE —

PURDUE FORT WAYNE RECORD

OVERALL: 4-10	LOSS-3
SUMMIT LEAGUE: 0-2	LOSS-12
NON-LEAGUE: 4-8	LOSS-1
HOME: 3-3	LOSS-1
AWAY: 1-7	LOSS-4
NEUTRAL: 0-0	LOSS-1

2018-19 SCHEDULE

NOVEMBER (3-5)

6	IU KOKOMO	W, 87-50
8	at Western Michigan	L, 69-61
12	TAYLOR	W, 84-74
15	at Eastern Illinois	L, 72-63
18	at Purdue	L, 78-44
20	at Evansville	W, 72-66
24	SIUE	L, 57-49
29	at Loyola-Chicago	L, 81-67

DECEMBER (1-5)

1	at Milwaukee	L, 70-48
8	Eastern Michigan	L, 87-72
16	Goshen	W, 86-45
19	Valparaiso	L, 68-64
28	at North Dakota State	L, 70-54
30	at North Dakota	L, 79-60

JANUARY (0-0)

3	SOUTH DAKOTA STATE	5 P.M.
9	ORAL ROBERTS	7 P.M.
12	at South Dakota	2 P.M.
19	at Western Illinois	5:30 P.M.
23	OMAHA	7 P.M.
26	DENVER	3 P.M.
30	at Oral Roberts	8 P.M.

FEBRUARY (0-0)

2	SOUTH DAKOTA	2 P.M.
6	WESTERN ILLINOIS	7 P.M.
13	at Denver	9 P.M.
16	at Omaha	2 P.M.
20	at South Dakota State	8 P.M.
28	NORTH DAKOTA	5 P.M.

MARCH (0-0)

2	NORTH DAKOTA STATE	2 P.M.
SUMMIT LEAGUE TOURNAMENT (Mar. 8-11)		
8-9	Quarterfinals	TBD
10	Semifinals	TBD
11	Championship	TBD

• Summit League Matches

CAPS/BOLD = Home Matches | All Times Eastern

PURDUE FORT WAYNE REFERENCES

As a part of university changes beginning July 1, 2018, we respectfully ask to refer to any athletic-related subjects as "Purdue Fort Wayne" or the "Purdue Fort Wayne Mastodons." **PLEASE DO NOT IN ANY CONTEXT** refer to any team as "IPFW" or "Indiana University - Purdue University Fort Wayne" as it **no longer exists**. Please **do not** use "Lady 'Dons" when referring to women's teams.

WOMEN'S BASKETBALL

PURDUE FORT WAYNE MASTODONS

4-10, 0-2 SUMMIT LEAGUE

VS

SOUTH DAKOTA STATE JACKRABBITS

9-5, 1-0 SUMMIT LEAGUE



LAST GAME:

L, 79-60 at North Dakota (Dec. 30)

COACH:

Niecee Nelson | 3rd Season

SCORING LEADER:

De'Jour Young | 13.6 ppg

REBOUNDING LEADER:

De'Jour Young | 6.6 rpg

ASSIST LEADER:

Anna Lappenküper | 3.4 apg

STEAL LEADER:

Anna Lappenküper | 1.8 spg

BLOCK LEADER:

Jaelencia Williams | 1.2 bpg

TALE OF THE TAPE

CATEGORY	'DONS	SDSU
POINTS SCORED	65.1	75.9
POINTS ALLOWED	69.0	67.2
FG PCT.	.413	.476
OPP. FG PCT.	.418	.400
3-POINT PCT.	.333	.366
OPP. 3-POINT PCT.	.337	.339
FREE THROW PCT.	.657	.749
REBOUNDS	33.6	38.1
REBOUND MARGIN	-3.7	+6.2
ASSISTS	11.9	17.1
TURNOVERS	15.6	14.2
STEALS	7.6	7.1
BLOCKED SHOTS	4.1	3.1

LAST GAME:

W, 93-84 at Western Illinois (Dec. 28)

COACH:

Aaron Johnston | 19th Season

SCORING LEADER:

Macy Miller | 17.1 ppg

REBOUNDING LEADER:

Tagyn Larson | 5.9 rpg

ASSIST LEADER:

Myah Selland | 3.6 apg

STEAL LEADER:

Macy Miller | 1.4 spg

BLOCK LEADER:

Tagyn Larson | 1.1 bpg

GAMEDAY INFORMATION

WHEN: January 3 | 5 p.m.

WHERE: Fort Wayne, Ind. | Memorial Coliseum (12,000)

LIVE STATS: Purdue Fort Wayne Live Stats

LIVE AUDIO: Purdue Fort Wayne Stretch Internet

LIVE VIDEO: Purdue Fort Wayne Broadcast

SERIES HISTORY: South Dakota State leads 31-1

LAST MEETING: South Dakota State 77, Purdue Fort Wayne 55 | February 24, 2018 | Fort Wayne, Ind.

MASTODON PROBABLE STARTERS (SUBJECT TO CHANGE)



Jaelencia Williams 6-2 So.
Indianapolis, Ind. / Southport

GP	GS	PPG	RPG	Ast	FG%	3FG%	FT%
14	6	9.2	4.79	5	.533	.000	.516



Hannah Albrecht 5-7 Jr.
Crown Point, Ind. / Crown Point H.S. / Saint Joseph's (IN)

GP	GS	PPG	RPG	Ast	FG%	3FG%	FT%
14	13	7.6	2.07	25	.373	.361	.846



Anna Lappenküper 5-8 Jr.
Herne, Germany / Otto Hahn Gymnasium

GP	GS	PPG	RPG	Ast	FG%	3FG%	FT%
14	14	5.9	3.07	47	.376	.351	.667



De'Jour Young 5-7 Sr.
Fort Wayne, Ind. / Concordia Lutheran

GP	GS	PPG	RPG	Ast	FG%	3FG%	FT%
14	14	13.6	6.57	28	.429	.349	.714



Kierstyn Repp 5-10 So.
Archbold, Ohio / Archbold

GP	GS	PPG	RPG	Ast	FG%	3FG%	FT%
14	11	10.3	2.36	13	.368	.347	.833

GoMastodons.com/WBBstats



@MastodonWBB
@GoMastodons
#GoDons

2018-19 SUMMIT LEAGUE STANDINGS

(as of 1/1/2018)

Team	Summit				Overall					
	Rec.	Pct.	PF	PA	Rec.	Pct.	PF	PA	Last 10	Strk.
South Dakota	1-0	1.000	67	41	13-2	0.867	1104	826	9-1	Won 1
South Dakota State	1-0	1.000	93	84	9-5	0.643	1062	941	6-4	Won 1
Oral Roberts	1-0	1.000	71	56	8-6	0.571	1001	933	7-3	Won 1
North Dakota	1-0	1.000	79	60	6-8	0.429	885	958	5-5	Won 3
Denver	1-1	0.500	173	155	8-7	0.533	1245	1152	4-6	Lost 1
Western Illinois	1-1	0.500	171	171	5-10	0.333	1130	1190	4-6	Won 1
North Dakota State	1-1	0.500	111	121	4-10	0.286	795	922	2-8	Lost 1
Omaha	0-2	0.000	124	166	5-9	0.357	829	886	4-6	Lost 5
Purdue Fort Wayne	0-2	0.000	114	149	4-10	0.286	911	966	2-8	Lost 3

2018-19 SUMMIT LEAGUE PLAYERS OF THE WEEK

Date	Player	Pos.	School	Feb. 18	Feb. 25
Nov. 12	Taylor Frederick	F	South Dakota		
Nov. 19	Macy Miller	G	South Dakota State		
Nov. 26	Madison Nelson	F	Denver		
Dec. 3	Lexi Klabo	F	North Dakota		
Dec. 10	Hannah Sjerven	C	South Dakota		
Dec. 17	Ciara Duffy	G	South Dakota		
Dec. 22	Taylor Higginbotham	G	Western Illinois		
Dec. 31	Lexi Klabo	F	North Dakota		
Jan. 7					
Jan. 15					
Jan. 21					
Jan. 28					
Feb. 4					
Feb. 12					

SUMMIT LEAGUE COMPOSITE SCHEDULE

Friday, December 14

Bradley 80, Omaha 60
Oral Roberts 73, Sam Houston State 62
Savannah State 49, South Dakota State 97

Saturday, December 15

South Dakota 74, Missouri 61
Denver 71, Nebraska 96

Sunday, December 16

North Dakota State 51, Valparaiso 48
Oral Roberts 74, Houston Baptist 56

Tuesday, December 18

South Dakota State 88, Montana State 67

Wednesday, December 19

Samford 87, Denver 83
North Dakota 63, Stetson 74
Grambling 53, South Dakota 67
San Francisco 75, North Dakota State 42

Thursday, December 20

Western Michigan 50, North Dakota 62
Loyola Marymount 40, South Dakota 67
UTEP 84, Western Illinois 72
South Dakota State 70, Wyoming 77

Friday, December 21

North Dakota State 59, Stetson 60
North Dakota 100, San Francisco 97
Denver 79, Colorado State 84
Indiana 68, South Dakota 60
Furman 78, Western Illinois 85
Oral Roberts 69, Oklahoma State 89
Omaha 50, UNI 79

Friday, December 28

Denver 95, Omaha 68
South Dakota State 93, Western Illinois 84

Sunday, December 30

South Dakota 67, North Dakota State 41
Oral Roberts 71, Omaha 56
Denver 78, Western Illinois 87

Wednesday, January 2

North Dakota at Oral Roberts 8 P.M.

Thursday, January 3

South Dakota at Denver 9 P.M.

Saturday, January 5

Western Illinois at Oral Roberts 3 P.M.
North Dakota at Denver 8 P.M.

Sunday, January 6

South Dakota State at South Dakota 2 P.M.
North Dakota State at Omaha 3 P.M.

Wednesday, January 9

Denver at South Dakota State 8 P.M.
Omaha at North Dakota TBA

Friday, January 11

Western Illinois at North Dakota State 8 P.M.

Saturday, January 12

Oral Roberts at South Dakota State 3 P.M.

Sunday, January 13

Western Illinois at North Dakota TBA

Wednesday, January 16

Omaha at Western Illinois TBA

Thursday, January 17

North Dakota State at Denver 9 P.M.

Friday, January 18

Friday, January 18
South Dakota State at North Dakota 8 P.M.
South Dakota at Oral Roberts 8 P.M.

Sunday, January 20

North Dakota at North Dakota State 2 P.M.
Oral Roberts at Denver 3 P.M.
South Dakota at Omaha 3 P.M.

Wednesday, January 23

North Dakota State at South Dakota State 8 P.M.

Thursday, January 24

South Dakota at North Dakota 8 P.M.

Saturday, January 26

Western Illinois at South Dakota 2 P.M.
North Dakota State at Oral Roberts 3 P.M.
Omaha at South Dakota State 3 P.M.

Wednesday, January 30

Waldorf at North Dakota State 7 P.M.

Thursday, January 31

South Dakota State at Denver 9 P.M.

Friday, February 1

North Dakota at Western Illinois TBA

PURDUE FORT WAYNE AT A GLANCE

GENERAL INFO

Address	2101 E. Coliseum Blvd.
City/Zip	Fort Wayne, IN / 46805
Founded	1964
Enrollment	10,414
Nickname	Mastodons
Colors	Gold and Black
Affiliation	NCAA Division I
Conference	The Summit League
Chancellor	Dr. Ron Elsenbaumer
Athletic Director	Kelley Hartley Hutton

MEDIA SERVICES

Asst. Director / WBB Contact	Brian Alden
E-mail	aldenbs@pfw.edu
Office Phone	(260) 481-6646
Cell Phone	(859) 468-8963
Office Fax	(260) 481-6002

COACHING STAFF

Head Coach	Niecee Nelson
Alma Mater 'Yr.	Concordia Portland '02
Record at School/Yrs.	13-58 / 3rd
Career Record/Yrs.	Same
Assistant Coach	Marcie Alberts (6th season)
Alma Mater 'Yr.	Ohio State '97
Assistant Coach	Haley Seibert (4th season)
Alma Mater 'Yr.	IPFW '15
Assistant Coach	Akilah Sims (1st season)
Alma Mater 'Yr.	IUPUI '16

SEASON IN REVIEW

2017-18 Overall Record	4-24
2017-18 Summit Record/Finish	1-13 / 8th
Letterwinners Returning/Lost	7 / 5
Starters Returning/Lost	4 / 1
Newcomers	5

HISTORY

First Year of Varsity Basketball	1976-77
First Year of NCAA Division I Basketball	2001-02
First Year in The Summit League	2007-08
All-Time Record	469-662
All-Time Division I Record	165-345
All-Time Summit League Record	71-114
All-time NCAA Tournament Record	0-3
Last NCAA Appearance	3/7/1996
Result	L, 71-79 vs. Lake Superior State
Years in Post-Season play	12
Last Post-Season Game	3/19/2014 (WBI)
Result	L, 84-71 at UIC

First Varsity Game	12/9/76 at Huntington; L, 41-38
500th Game	1/9/97 at Saint Joseph's (IN); W, 73-61
750th Game	1/25/06 vs. Butler; L, 70-60
1,000th Game	3/19/14 at UIC; L, 84-71

First Program Victory	12/11/76 vs. Grace; W, 72-31
250th Program Victory	2/10/96 at Kentucky Wesleyan; W, 91-76

Conference/Membership Affiliations

AIAW Independent	1976-77 to 1981-82
NCAA D-III Independent	1982-83 to 1983-84
NCAA D-II Great Lakes Valley Conference	1984-85 to 2000-01
NCAA D-I Independent	2001-02 to 2006-07
NCAA D-I The Summit League	2007-08 to present

PURDUE FORT WAYNE MASTODONS ROSTER

No.	Name	Ht.	Pos.	Cl.	Hometown	High School / Previous School
00	Jaelencia Williams (<i>JUH-len-see-uh</i>)	6-2	C	So.	Indianapolis, Ind.	Southport
3	Sierra Bell	5-7	G	Jr.	Danville, Ill.	Schlarman Academy / Northeast Community College
4	Ellie Dykstra	6-1	F	Fr.	Byron Center Mich.	Byron Center
5	Hannah Hess	5-10	G	R-So.	Oregon, Ohio	Clay
10	Hannah Albrecht	5-7	G	Jr.	Crown Point, Ind.	Crown Point / Saint Joseph's (IN)
12	Anna Lappenküper (<i>AHH-nuh LAH-pen-cooper</i>)	5-8	G	Jr.	Herne, Germany	Otto Hahn Gymnasium
13	De'Jour Young (<i>D-zhur</i>)	5-7	G	Sr.	Fort Wayne, Ind.	Concordia Lutheran
14	Sh'Toya Sanders (<i>SHUH-toy-yuh</i>)	6-0	F	R-Jr.	Fort Wayne, Ind.	Wayne / Chicago State
15	Cam Douglas	5-11	F	Fr.	San Deigo, Calif.	Mount Miguel
23	Amaya Johns (<i>UH-my-yuh</i>)	5-9	G	Fr.	Plainfield, Ill.	Oswego East
31	Sofia Rajala (<i>RUH-jah-Luh</i>)	6-0	F	So.	Helsinki, Finland	Mäkelänrinne Sports
32	Kierstyn Repp (<i>Rep</i>)	5-10	G	So.	Archbold, Ohio	Archbold

Head Coach: Niecee Nelson (*KNEE-see*)
Assistant Coaches: Marcie Alberts, Haley Seibert (*sigh-BERT*) and Akilah Sims
Graduate Manager: Kendall Festervand

SOUTH DAKOTA STATE JACKRABBITS ROSTER

No.	Name	Pos.	Ht.	Cl.	Hometown	Previous School
2	Rylie Cascio Jensen	G	5-10	Jr.	Fremont, Neb.	Nebraska
3	Lindsey Theuninck	G	5-7	R-Fr.	Mankato, Minn.	Mankato Loyola
10	Lauren Rongisch	G	5-7	Fr.	Omaha, Neb.	Millard West
11	Madison Guebert	G	5-8	Sr.	Apple Valley, Minn.	Eastview
12	Macy Miller	G	6-0	R-Sr.	Mitchell	Mitchell
21	Tylee Irwin	G	6-0	So.	Wahpeton, N.D.	Wahpeton
24	Tagyn Larson	F	6-2	R-Jr.	Sioux Falls, S.D.	Iowa
30	Jordan Ferrand	F	6-2	Fr.	White Bear Lake, Minn.	White Bear Lake
32	Sydney Palmer	G/F	5-11	Sr.	Pierre, S.D.	Pierre T.F. Riggs
33	Paiton Burckhard	F	6-0	Fr.	Aberdeen, S.D.	Aberdeen Central
35	Sydney Stapleton	G	5-10	Fr.	Blaine, Minn.	Centennial
44	Myah Selland	G/F	6-2	So.	Letcher, S.D.	Sanborn Central
50	Megan Bultsma	C	6-3	Jr.	Plankinton, S.D.	Mt. Vernon
52	Addison Hirschman	C	6-2	Fr.	Kingsley, Iowa	Kingsley-Pierson

Head Coach: Aaron Johnston
Assistant Coaches: Mike Jewett, Carissa Thielbar and Megan Lueck

All-Time Results vs. South Dakota State

01/29/2005	H	SOUTH DAKOTA STATE	L, 73-90	Fort Wayne, Ind.
01/19/2006	A	South Dakota State	L, 53-74	Brookings, S.D.
02/24/2006	H	SOUTH DAKOTA STATE	L, 52-72	Fort Wayne, Ind.
02/10/2007	A	South Dakota State	L, 51-103	Brookings, S.D.
03/01/2007	H	SOUTH DAKOTA STATE	L, 58-70	Fort Wayne, Ind.
01/05/2008	A	South Dakota State	L, 62-68	Brookings, S.D.
02/04/2008	H	SOUTH DAKOTA STATE	L, 72-74	Fort Wayne, Ind.
01/03/2009	H	#21 SOUTH DAKOTA STATE	L, 48-71	Fort Wayne, Ind.
02/02/2009	A	#19 South Dakota State	L, 56-83	Brookings, S.D.
01/25/2010	A	South Dakota State	L, 62-83	Brookings, S.D.
02/20/2010	H	SOUTH DAKOTA STATE	L, 65-76	Fort Wayne, Ind.
03/07/2010	N	South Dakota State	L, 52-93	Sioux Falls, S.D.
01/22/2011	A	South Dakota State	W, 70-67 OT	Brookings, S.D.
02/21/2011	H	SOUTH DAKOTA STATE	L, 47-50	Fort Wayne, Ind.
03/07/2011	N	South Dakota State	L, 67-70	Sioux Falls, S.D.
12/31/2011	A	South Dakota State	L, 58-81	Brookings, S.D.
01/28/2012	H	SOUTH DAKOTA STATE	L, 66-76	Fort Wayne, Ind.
03/03/2012	N	South Dakota State	L, 59-80	Sioux Falls, S.D.
01/12/2013	H	SOUTH DAKOTA STATE	L, 64-66	Fort Wayne, Ind.
02/07/2013	A	South Dakota State	L, 62-72	Brookings, S.D.
03/11/2013	N	South Dakota State	L, 59-86	Sioux Falls, S.D.
01/11/2014	A	South Dakota State	L, 60-77	Brookings, S.D.
02/06/2014	H	SOUTH DAKOTA STATE	L, 66-77	Fort Wayne, Ind.
01/10/2015	H	SOUTH DAKOTA STATE	L, 64-65	Fort Wayne, Ind.
02/08/2015	A	South Dakota State	L, 68-89	Brookings, S.D.
01/13/2016	H	SOUTH DAKOTA STATE	L, 42-61	Fort Wayne, Ind.
02/13/2016	A	South Dakota State	L, 64-92	Brookings, S.D.
03/05/2016	N	South Dakota State	L, 60-80	Sioux Falls, S.D.
01/05/2017	A	South Dakota State	L, 51-73	Brookings, S.D.
02/18/2017	H	SOUTH DAKOTA STATE	L, 59-76	Fort Wayne, Ind.
01/27/2018	A	South Dakota State	L, 49-105	Brookings, S.D.
02/24/2018	H	SOUTH DAKOTA STATE	L, 55-77	Fort Wayne, Ind.

Overall: 1-31
League: 1-21
Home: 0-14
Away: 1-12
Neutral: 0-5

3 2018-19 PURDUE FORT WAYNE WOMEN'S BASKETBALL GAME NOTES

ON THIS DATE... JANUARY 3 (2-3)

2009	#21 SOUTH DAKOTA STATE	L, 48-71
2007	INDIANA-SOUTH BEND	W, 79-46
1991	at Saint Joseph's (IN)	L, 61-87
1990	TAYLOR (IN)	W, 93-69
1987	INDIANAPOLIS	L, 73-79

ALL-TIME IN JANUARY... BY DAY AND LOCATION

Sunday	2-4
Monday	17-20
Tuesday	9-17
Wednesday	11-15
Thursday	37-50
Friday	2-12
Saturday	56-95

Home	83-97
Away	52-111
Neutral	0-4

ALL-TIME RECORD... BY DAY OF THE WEEK

Sunday	16-46
Monday	37-53
Tuesday	48-61
Wednesday	37-53
Thursday	104-133
Friday	33-55
Saturday	190-256

ALL-TIME RECORD... BY MONTH

November	65-94
December	112-152
January	135-212
February	140-174
March	17-30

Mastodons vs.

18-19 OPPONENTS	All-Time	Under Nelson
Denver	3-8	0-4
Eastern Illinois	2-4	1-1
Eastern Michigan	0-2	0-1
Evansville	2-1	1-0
Goshen	4-6	1-0
IU Kokomo	1-0	1-0
Loyola-Chicago	1-2	1-1
Milwaukee	2-5	0-2
North Dakota	0-2	0-1
North Dakota State	9-19	1-4
Omaha	6-6	2-2
Oral Roberts	5-14	0-4
Purdue	0-6	0-1
SIUE	9-11	0-1
South Dakota	3-12	0-4
South Dakota State	1-31	0-4
Taylor	7-4	1-0
Valparaiso	5-11	0-1
Western Illinois	10-13	0-4
Western Michigan	1-5	0-2
TOTALS	71-162	9-37

Mastodons vs.

SUMMIT LEAGUE	All-Time	Under Nelson
Denver	3-8	0-4
North Dakota	0-2	0-1
North Dakota State	9-19	1-4
Omaha	6-6	2-2
Oral Roberts	5-14	0-4
South Dakota	3-12	0-4
South Dakota State	1-31	0-4
Western Illinois	10-13	0-4
TOTALS	112-92	27-46

HEAD COACH NIECEE NELSON

Niecee Nelson was appointed as Fort Wayne's women's basketball head coach on April 18, 2016. An assistant coach at the University of San Diego for 11 seasons, she is the 14th head coach in the 40-year history of the program. Nelson is no stranger to Fort Wayne, however, having served as an assistant coach for the Mastodons for one season during 2004-05, after getting her start in coaching as a graduate assistant at the University of Wyoming for two seasons (2002-04).

Nelson helped lead San Diego to an overall record of 222-124 since 2005, including five consecutive 20-win seasons and postseason WNIT appearances. The Toreros, under the direction of head coach Cindy Fisher, made one NCAA Tournament appearance since '05, winning the WCC Tournament in 2008, and have made six overall appearances in the WNIT, first advancing to the event in 2007. USD was 25-8 in 2015-16, tying for the second-most wins in program history while advancing to the third round of the WNIT.

Nelson's on court responsibilities at USD included point guard and shooting guard development, while serving as the program's offensive coordinator. She has helped develop 13 All-WCC First Team guards, including Dominique Conners, a three-time honoree and USD's all-time leader in points and steals. Nelson also helped develop Amanda Rego, the program's only WCC Player of the Year (2006-07), who was the national assist leader that season, and is the school's career leader in assists.

Nelson's off court responsibilities at USD included serving as the program's academic coordinator, budget management and ordering of team equipment, including uniforms and apparel, as well as managing team travel. Additionally, she shared in the duties of recruiting as well as the opponent scouting and game strategy. Nelson has also assisted in creating practice plans and individual workouts.

Nelson was an assistant at Fort Wayne during 2004-05, with primary responsibilities in team travel, post player development, marketing and academic support. Within two months of arriving at Fort Wayne, she was promoted to recruiting coordinator, leading the charge in overseas recruiting into Brazil and Europe.

Prior to Fort Wayne, Nelson served as a graduate assistant at Wyoming with Coach Fisher. She worked closely with the staff and team on practice and game day coaching, individual workouts, academic support, film exchange, and guard and post development.

Nelson earned 2001 NAIA All-America honors at Concordia University in Portland, Oregon. A two-time team captain, she was named to the 2001 Lutheran Brotherhood All-America Team. Nelson was a two-time All-Cascade Conference First Team selection (2001, 2002), and the 1998 Cascade Conference Freshman of the Year.

Nelson graduated from Concordia in 2002 with a Bachelor of Arts degree in Education with an emphasis in Elementary Education, adding minors in Business Marketing and Psychology. She earned a Master of Science degree in Kinesiology and Health with an emphasis in Health Promotion from Wyoming in 2004.

Niecee and her husband, Steve, have two children: son Sebastian and daughter Skyler.

PURDUE FORT WAYNE IN SUMMIT LEAGUE AND NCAA STATISTICS

TEAM	Statistic	(of 349) NCAA	(of 9) Summit
Assist Turnover Ratio	0.76	206	5
Assists	167	153	8
Assists Per Game	11.9	255	8
Blocked Shots	57	44	2
Blocked Shots Per Game	4.1	80	2
Fewest Fouls	257	315	5
Fewest Turnovers	219	257	4
Field-Goal Percentage	41.3	132	4
Field-Goal Percentage Defense	41.8	267	7
Free Throw Attempts	233	102	6
Free Throws Made	153	121	7
Free-Throw Percentage	65.7	242	9
Personal Fouls Per Game	18.4	219	5
Rebound Margin	-3.6	270	7
Rebounds	474	145	8
Rebounds Per Game	33.86	311	7
Scoring Defense	69	271	7
Scoring Margin	-3.9	248	5
Scoring Offense	65.1	180	6
Steals	107	121	4
Steals Per Game	7.6	200	4
Three Pt FG Defense	33.7	287	7
Three-Point Field Goals Attempted	276	86	6
Three-Point Field Goals Made	92	70	6
Three-Point Field Goals Per Game	6.6	129	6
Three-Point Field-Goal Percent	33.3	94	5
Turnover Margin	-0.5	210	5
Turnovers Forced	15.14	256	6
Turnovers Per Game	15.6	137	5

INDIVIDUAL

	Statistic	NCAA	Summit
Assist Turnover Ratio			
Anna Lappenküper	1.27	242	7
Blocked Shots			
Jaelencia Williams	17	101	4
Blocked Shots Per Game			
Jaelencia Williams	1.21	163	4
Sh'Toya Sanders	1.09	196	6
Final Points			
De'Jour Young	191	154	11
Free Throw Attempts			
De'Jour Young	70	49	5
Jaelencia Williams	64	78	7
Free Throws Made			
De'Jour Young	50	59	5
Free-Throw Percentage			
De'Jour Young	71.4	250	8
Minutes Played			
De'Jour Young	469:55	41	4
Anna Lappenküper	442:25	85	10
Kierstyn Repp	424:40	139	15
Steals			
Anna Lappenküper	25	127	3
Three-Point Field Goals Attempted			
Kierstyn Repp	98	42	3
Three-Point Field Goals Made			
Kierstyn Repp	34	51	4
Three-Point Field Goals Per Game			
Kierstyn Repp	2.43	103	4
Three-Point Field-Goal Percentage			
Kierstyn Repp	34.7	165	6

As of 1/1

Does not include teams reclassifying

Season and Career Totals 2018-19 Career

DOUBLE-DOUBLES

De'Jour Young	1	5
---------------	---	---

20-PLUS POINT GAMES

De'Jour Young	3	7
Kierstyn Repp	1	2
Hannah Albrecht	-	1
Jaelencia Williams	1	1

DOUBLE-DIGIT SCORING GAMES

De'Jour Young	11	50
Anna Lappenküper	2	20
Jaelencia Williams	5	16
Kierstyn Repp	7	17
Hannah Albrecht	4	11
Hannah Hess	2	4
Sh'Toya Sanders	4	4
Sierra Bell	1	1

10-PLUS REBOUND GAMES

De'Jour Young	1	7
Jaelencia Williams	-	1
Sh'Toya Sanders	1	1

5-PLUS ASSIST GAMES

Anna Lappenküper	3	7
De'Jour Young	-	3
Sierra Bell	1	1
Hannah Hess	1	1
Hannah Albrecht	1	1

3-PLUS STEAL GAMES

De'Jour Young	3	13
Anna Lappenküper	4	8
Hannah Albrecht	-	3
Sierra Bell	1	1
Hannah Hess	1	1
Kierstyn Repp	1	1

3-PLUS THREE-POINT FG GAMES

Kierstyn Repp	8	18
Anna Lappenküper	1	4
Hannah Hess	2	4
Hannah Albrecht	1	3
De'Jour Young	1	1

STARTS

De'Jour Young	14	88
Anna Lappenküper	14	63
Hannah Albrecht	13	39
Kierstyn Repp	11	26
Jaelencia Williams	6	21
Sh'Toya Sanders	8	8
Hannah Hess	3	5
Sofia Rajala	-	1
Ellie Dykstra	1	1

5-5-5 GAMES

At least 5 in three categories (pts, rbs, ast, stl or blk)		
De'Jour Young	-	3
Sierra Bell	1	1
Jaelencia Williams	1	1

Single Game Stat Leaders 2018-19 Career

TEAM LEADER IN POINTS

De'Jour Young	7	31
Jaelencia Williams	2	9
Kierstyn Repp	2	6
Anna Lappenküper	-	4
Hannah Albrecht	1	3
Sh'Toya Sanders	2	2

TEAM LEADER IN REBOUNDS

De'Jour Young	5	40
Jaelencia Williams	2	15
Sh'Toya Sanders	7	7
Anna Lappenküper	-	1
Hannah Albrecht	-	1
Kierstyn Repp	-	1
Sierra Bell	1	1

TEAM LEADER IN ASSISTS

De'Jour Young	3	23
Anna Lappenküper	8	21
Hannah Albrecht	2	13
Hannah Hess	1	2
Jaelencia Williams	1	2
Kierstyn Repp	-	1
Sierra Bell	1	1

TEAM LEADER IN STEALS

De'Jour Young	5	33
Anna Lappenküper	5	16
Hannah Albrecht	1	8
Hannah Hess	2	7
Kierstyn Repp	3	6
Jaelencia Williams	-	3
Sierra Bell	3	3
Sh'Toya Sanders	2	2

TEAM LEADER IN BLOCKS

Jaelencia Williams	6	22
De'Jour Young	1	21
Anna Lappenküper	3	6
Sh'Toya Sanders	6	6
Kierstyn Repp	2	4
Hannah Hess	-	1
Hannah Albrecht	-	1
Sierra Bell	1	1

POINTS OFF THE BENCH

Jaelencia Williams	4	13
Hannah Hess	5	10
Kierstyn Repp	1	6
De'Jour Young	-	4
Sierra Bell	4	4
Anna Lappenküper	-	3
Sh'Toya Sanders	2	2
Hannah Albrecht	1	1
Ellie Dykstra	1	1

Miscellaneous Game Stats

SCORES FIRST

Fort Wayne	8
Opponents	6

HOW MASTODONS SCORED FIRST POINT

Free Throw	2
Jumper	4
Layup	3
Three-Pointer	5

FIRST MASTODON POINT SCORED BY

Kierstyn Repp	4
Jaelencia Williams	3
Hannah Albrecht	2
De'Jour Young	2
Sierra Bell	1
Sh'Toya Sanders	1
Anna Lappenküper	1

SCORING RUNS OF 10-0 OR BETTER

Fort Wayne	8
Opponents	11

TIP-OFFS CONTROLLED

Fort Wayne	10
Opponents	4

Sh'Toya Sanders	6/8	(.714)
Jaelencia Williams	4/5	(.800)
Ellie Dykstra	0/1	(.000)

MASTODONS FIRST SUBSTITUTION

Hannah Hess	8
Jaelencia Williams	4
Sh'Toya Sanders	3
Sierra Bell	2
Kierstyn Repp	1

PLAYERS FOULED OUT

Fort Wayne	5
Opponents	2

De'Jour Young	1	4
Anna Lappenküper	1	3
Kierstyn Repp	2	3
Hannah Albrecht	1	1

THREE- AND FOUR-POINT PLAYS

Fort Wayne	13
Opponents	8

De'Jour Young	4	18
Jaelencia Williams	3	8
Anna Lappenküper	1	5
Hannah Albrecht	1	2
Sierra Bell	2	2
Hannah Hess	1	1
Sh'Toya Sanders	1	1

BENCH POINTS

Purdue Fort Wayne	273 (19.5 ppg.)
Opponents	267 (19.1 ppg.)

LARGEST HALFTIME LEAD

27 (48-21) vs Goshen (12/16/18)

LARGEST HALFTIME DEFICIT

22 (39-17) at Purdue (11/18/18)

LARGEST WIN

41 (86-45) vs Goshen (12/16/18)

LARGEST DEFEAT

34 (78-44) at Purdue (11/18/18)

LARGEST LEAD

45 (77-32, 8:33, 4th) vs Goshen (12/16/18)

LARGEST DEFICIT

40 (77-37, 3:00, 4th) at Purdue (11/18/18)

LARGEST DEFICIT OVERCOME TO WIN

5 (54-49, 1:32, 3rd) at Evansville (11/20/18)

LARGEST LEAD GIVEN UP IN LOSS

8 (18-10, 9:51, 2nd) at Western Michigan (11/8/18)

MOST CONSECUTIVE POINTS

13, (9:39 - 6:36 1st) vs Goshen (12/16/18)

MOST CONSECUTIVE POINTS BY OPP.

22 (9:30-1:29, 2nd) at Western Michigan (11/8/18)

LONGEST WINNING STREAK

LONGEST LOSING STREAK

4 (11/24-12/8)

LARGEST HOME CROWD

983, vs IU Kokomo (11/6/18)

LARGEST ROAD CROWD

5,970, at Purdue (11/20/18)

MOST TIME LEADING

39:39, vs Goshen (12/16/18)

MOST TIME LEADING IN LOSS

8:25, at Western Michigan (11/8/18)

MOST TIME WITH SCORE TIED

7:48, at Western Michigan (11/8/18)

MOST TIME TRAILING

39:34, at Milwaukee (12/1/18)

MOST LEAD CHANGES

13, vs. Taylor (11/12/18)

MOST TIE SCORES

7, at Western Michigan (11/8/18)

STARTING LINEUPS

Game	G	G	G	G/F	C/F
IU Kokomo	Lappenküper	Young	Albrecht	Repp	Sanders
Western Michigan	Lappenküper	Young	Albrecht	Repp	Sanders
Taylor	Lappenküper	Young	Albrecht	Repp	Sanders
Eastern Illinois	Lappenküper	Young	Albrecht	Repp	Sanders
Purdue	Lappenküper	Young	Hess	Sanders	Williams
Evansville	Lappenküper	Young	Albrecht	Repp	Sanders
SIUE	Lappenküper	Young	Albrecht	Repp	Sanders
Loyola-Chicago	Lappenküper	Young	Hess	Albrecht	Williams
Milwaukee	Lappenküper	Young	Hess	Albrecht	Dykstra
Eastern Michigan	Lappenküper	Young	Albrecht	Repp	Williams
Goshen	Lappenküper	Young	Albrecht	Repp	Williams
Valparaiso	Lappenküper	Young	Albrecht	Repp	Williams
North Dakota State	Lappenküper	Young	Albrecht	Repp	Williams
South Dakota	Lappenküper	Young	Albrecht	Repp	Sanders
South Dakota State					
Oral Roberts					
South Dakota					
Western Illinois					
Omaha					
Denver					
Oral Roberts					
South Dakota					
Western Illinois					
Denver					
Omaha					
South Dakota State					
North Dakota					
North Dakota State					

BY ROTATION

3-4	Lappenküper	Young	Albrecht	Repp	Sanders
0-1	Lappenküper	Young	Hess	Sanders	Williams
0-1	Lappenküper	Young	Hess	Albrecht	Williams
0-1	Lappenküper	Young	Hess	Albrecht	Dykstra
1-3	Lappenküper	Young	Albrecht	Repp	Williams

BY PLAYER

Lappenküper	4-10
Young	4-10
Albrecht	4-9
Repp	4-7
Sanders	3-5
Williams	1-5
Hess	0-3
Dykstra	0-1

TOP-10 BENCH SCORERS...

Player	Pts.	Opponent	Date
Hannah Hess	16	Taylor	11/12
Sierra Bell	15	IU Kokomo	11/6
Kierstyn Repp	12	at Milwaukee	12/1
Hannah Albrecht	12	at Purdue	11/18
Jaelencia Williams	12	Taylor	11/12
Hannah Hess	11	Eastern Michigan	12/8
Jaelencia Williams	10	IU Kokomo	11/6
Jaelencia Williams	10	at North Dakota	12/30
Hannah Hess	9	at Western Michigan	11/8
Jaelencia Williams	9	at Western Michigan	11/8
Hannah Hess	9	Goshen	12/16
Sh'Toya Sanders	9	at North Dakota State	12/28

WHY MASTODONS?...

It all started about 10,000 years ago...

That's when mastodons roamed the southern Great Lakes region of North America. These stocky versions of modern elephants reached heights of about ten feet at the shoulder, with tusks that curved upward that were six feet or more in length. Mastodons were browsers who fed mostly on leaves and twigs from small trees and shrubs.

One such mastodon found its final resting place about two miles south of Angola, Indiana, on land that would eventually become part of Orsie Routsong's farm. In the fall of 1968, Routsong decided to expand a small pond on his property. An excavator was hired and instructed to pile the excavated material around the edge of the pond. Several days after the excavation was finished a heavy rain storm pounded the piles of dirt.

The next day, a young neighbor boy of Routsong's discovered a large bone in one of the dirt piles. Routsong knew it was something out of the ordinary, so he called Jack Sunderman, chair of the IPFW Geology Department, to identify the bone, and to ask for advice on what to do with it. Sunderman says his first question was, "How big is the bone," with Routsong's answer being "pretty big, maybe 3 or 4 feet long."

When Sunderman got to the farm, he identified the bone as a leg bone of a mastodon. He told Routsong a skeleton like this would have scientific and instructional value if a large portion of it could be located. Routsong agreed, and also agreed to have the IPFW Geology Department do the excavation. Sunderman got two more faculty members, Geoffrey Matthews and Bernd Erdtmann, and several geology students to help in the project.

After all the mastodon bones were collected, cleaned, and preserved, Routsong agreed to have the adult mastodon skeleton placed on permanent display at IPFW; the skull of a nearby baby mastodon is now on loan to Science Central.

In the spring of 1970, The Communicator (IPFW's student newspaper) began a drive to come up with a mascot for IPFW. Some of the suggested choices included the Boiler-Hoosiers, Warhawks, Marauders, Frontiersmen, Pioneers, Elfs, and Hobbits. Those names and others came from student suggestions. Steve Pettyjohn, who served as the student body president in 1968-69, wrote a letter to the editor about the school mascot. In his letter, Pettyjohn extolled the virtues of choosing the mastodon as IPFW's mascot: "It sounds different, strange - that's exactly why. It's different and yes, even strange. For God's Sakes, let's have the courage to be a little different."

In the meantime, former Indiana Congressman Mark Souder, who served as student body president in 1969-70, recalls being lobbied by the Geology Club to choose the mastodon.

According to Nusbaumer, "Souder appointed a committee in student government to select a name although he was lobbying hard for the mastodon." After some discussion on the subject, Souder says a vote was taken by the committee and the mastodon came out the winner. Souder finished his recollection with these thoughts. "History shows that the advocacy of the geology club was correct. The fast, decisive action of the elected student government—though it did not please everyone and was not a precedent that the University desired to see—has also been upheld by history as IPFW regularly scores high in any list of unique university nicknames; even in this era when everybody strives to be different. We did it decades ago."

WHAT IS A MASTODON?...(ACCORDING TO WIKIPEDIA)

Mastodons are any species of extinct proboscideans (mammals with tusks and long, muscular trunks) in the genus *Mammot*, distantly related to elephants, that inhabited North and Central America during the late Miocene or late Pliocene up to their extinction at the end of the Pleistocene 10,000 to 11,000 years ago. Mastodons lived in herds and were predominantly forest dwelling animals that fed on a mixed diet of browsing and grazing with a seasonal preference for browsing, in contrast to living elephants that are mostly grazing animals.

Modern reconstructions based on partial and skeletal remains reveal that mastodons were very similar in appearance to elephants and, to a lesser degree, mammoths, though not closely related to either one. Compared to mammoths, mastodons had shorter legs, a longer body and were more heavily muscled, a build similar to that of the current Asian elephants. The average body size of the species was around 2.3 m (7 ft 7 in) in height at the shoulders, corresponding to a large female or a small male, but large males could grow up to 2.8 m (9 ft 2 in) in height and weigh as much as 4.5 tonnes (5 short tons).

PURDUE FORT WAYNE WHEN...	2018-19	NELSON			
Overall	4-10	13-58	Plays a team with ≥.500 record	3-6	7-44
Home	2-3	9-23	Plays a team with <.500 record	1-4	6-14
Road	1-7	2-33	Plays in the state of Indiana	4-4	11-28
Neutral	0-0	1-2	Plays outside Indiana	0-6	2-29
At Memorial Coliseum	0-0	0-2	Plays in Eastern Time Zone	3-5	11-34
Wearing White	2-2	4-9	Plays in Central Time Zone	1-5	2-22
Wearing Grey	1-1	3-4	Plays in Mountain Time Zone	0-0	0-2
Wearing Black	1-7	3-10	Plays in Pacific Time Zone	0-0	0-0
Wearing Pink	0-0	0-1	Plays during the day	1-7	6-32
Summit League	0-2	3-29	Plays at night (5pm or later)	2-3	6-26
Summit League Home	0-0	3-12	Plays in November	3-5	7-16
Summit League Road	0-2	0-17	Plays in December	1-5	4-17
Non-League	4-8	10-28	Plays in January	0-0	2-12
Non-League Home	3-3	7-11	Plays in February	0-0	1-12
Non-League Road	1-5	2-16	Plays in March	0-0	0-1
Following a win	0-4	0-13	Plays on Sunday	1-2	2-5
Following a loss	3-6	12-40	Plays on Monday	1-0	1-3
Against top 25 (AP) teams	0-0	0-1	Plays on Tuesday	2-0	3-5
Against Mid-Major top 25 teams	0-0	0-13	Plays on Wednesday	0-1	2-10
In Overtime	0-0	0-1	Plays on Thursday	0-3	0-11
In Multiple Overtimes	0-0	0-0	Plays on Friday	0-1	1-4
Regular Season Tournaments	0-0	1-2	Plays on Saturday	0-3	4-20
Postseason	0-0	0-1	Attendance is ≤ 999	4-7	13-40
Wins Tip	4-6	9-19	Attendance is ≥ 1,000	0-3	0-18
Scores First	2-6	5-17	Margin is 1 point	0-0	1-0
Leads after 1st quarter	4-2	9-9	Margin is between 2-5	0-1	2-1
Trails after 1st quarter	0-8	3-49	Margin is between 6-10	2-3	5-8
Tied after 1st quarter	0-0	1-0	Margin is between 11-20	0-4	3-24
Leads at half	3-0	9-3	Margin is more than 20	2-2	2-24
Trails at half	1-10	4-53	Scores ≤ 49 pts.	0-3	0-16
Tied at half	0-0	0-1	Scores 50-59 pts.	0-1	0-26
Leading with 5:00 left	4-0	11-0	Scores 60-69 pts.	0-5	3-11
Trailing with 5:00 left	0-9	2-57	Scores 70-79 pts.	1-1	6-4
Tied with 5:00 left	0-1	0-1	Scores 80-89 pts.	3-0	3-1
Shoots ≥ 50%	3-0	5-0	Scores 90-99 pts.	0-0	1-0
Shoots < 50%	1-10	8-58	Scores 100+ pts.	0-0	0-0
Opponent shoots ≥ 50%	0-3	1-23	Opponent Scores ≤ 49 pts.	1-0	1-1
Opponent shoots < 50%	4-7	12-35	Opponent scores 50-59 pts.	1-1	4-2
Shoots better than opp.	4-3	10-5	Opponent scores 60-69 pts.	1-2	4-18
Shoots worse than opp.	0-7	3-53	Opponent scores 70-79 pts.	1-5	4-23
Makes 5+ 3-Pt. shots	4-7	11-29	Opponent scores 80-89 pts.	0-2	0-10
Makes 9+ 3-Pt. shots	1-2	4-6	Opponent scores 90-99 pts.	0-0	0-1
More 3-Pt. made than opp.	3-3	9-18	Opponent scores 100+ pts.	0-0	0-2
Has equal 3-Pt. made	0-4	0-9	Force 20 or more turnovers	2-0	3-4
Fewer 3-Pt. made than opp.	1-3	4-31	Commit 15 or more turnovers	3-6	6-35
Shoots 3-Pt. better than opp.	4-4	11-16	Make 10 or more steals	2-1	4-4
Shoots 3-Pt. worse than opp.	0-6	2-42	Starters outscore opp. starters	3-0	9-2
Shoots 3-Pt. 35% or better	2-3	10-16	≤ 2 players score 10+ pts.	0-6	2-41
Shoots 3-Pt. less than 35%	2-7	3-42	3 players score 10+ pts.	0-1	1-12
Opp. Shoots 3-Pt. 35% or better	1-4	3-39	4+ players score 10+ pts.	4-2	10-4
Opp. Shoots 3-Pt. less than 35%	3-6	10-19	1+ player with 20+ points	3-1	4-9
More FTs made than opp.	2-3	10-15	1+ player with 10+ rebounds	0-2	0-10
Has equal FTs made	0-1	0-3	1+ player with double-double	0-1	0-5
Fewer FTs made than opp.	2-6	3-10	1+ player with 5+ 3-Pt. made	0-1	0-4
Out-rebounds opp.	3-3	9-17	1+ player fouls out	0-5	4-22
Has equal rebounds	1-0	2-1	More bench points	3-5	9-22
Is out-rebounded	0-7	2-40	Has equal bench points	0-0	0-1
More turnovers than opp.	0-5	5-40	Fewer bench points	1-5	4-34
Has equal turnovers as opp.	0-2	0-4	More points in the paint	3-2	7-7
Fewer turnovers than opp.	4-3	8-14	Has equal points in the paint	0-1	0-2
More assists than opp.	3-2	4-7	Fewer points in the paint	1-7	6-49
Has equal assists	0-1	2-2	More points off turnovers	4-2	9-8
Fewer assists than opp.	1-7	7-49	Has equal points off turnovers	0-1	1-3
More blocks than opp.	4-1	7-8	Fewer points off turnovers	0-7	3-46
Has equal blocks	0-2	1-5	More 2nd chance points	2-5	8-22
Fewer blocks than opp.	0-7	5-45	Has equal 2nd chance points	0-0	0-1
More steals than opp.	3-4	8-16	Fewer 2nd chance points	2-5	5-35
Has equal steals	0-3	0-7	More fast break points	3-2	5-8
Fewer steals than opp.	1-3	5-35	Has equal fast break points	1-2	1-8
More fouls than opp.	2-6	4-41	Fewer fast break points	0-6	7-42
Has equal fouls	1-1	1-1	Longest Winning Streak	1	1
Fewer fouls than opp.	1-3	8-16	Longest Losing Streak	4	11
			Current Streak	L3	

WELCOME TO THE CLUB...

Senior De'Jour Young became the 20th member of the Mastodons' 1,000-point club on Dec. 19 against Valparaiso. Kierstyn Repp hit Young with a bounce pass down the lane for a layup at the 6:53 mark of the second quarter. Young went on to finish with a career- and game-high 14 rebounds, to go along with 13 points. She's the first Mastodons since now assistant coach Haley Seibert joined the club on Dec. 6, 2014.

1.	2,358	Lisa Miller	1988-92
2.	2,107	Lindy Jones	1992-96
3.	1,730	Johnna Lewis-Carlisle	2004-08
4.	1,676	Amanda Hyde	2010-14
5.	1,589	Leah Sheets	1994-98
6.	1,572	Amy Gearlds	1999-04
7.	1,527	Robin Scott	1987-91
8.	1,480	Teena Merrell	1986-90
9.	1,386	Haley Seibert	2011-15
10.	1,293	Rhonda Unverferth	1982-85
11.	1,246	Jordan Zuppe	2007-11
12.	1,243	Stephanie Rosado	2009-12
13.	1,225	Anne Boese	2008-12
14.	1,168	Pam Edwards	1989-92,93-94
15.	1,153	Ashley Johnson	2003-07
16.	1,128	Chelsey Jackson	2007-11
17.	1,106	Jennie Newhard	1992-96
18.	1,076	Jamie Holderman	1999-01
19.	1,018	Courtney Nicley	2001-05
20.	1,007	De'Jour Young	2015-present

SWATTING MORE FLIES...

The Mastodons reached double-digit blocks for the second time this season, but this time, they tied the program record with 11 blocks against Goshen on Dec. 16. The 11 blocks tied a program mark which has been reached twice before, Nov. 23, 2010 against Indiana Tech and Dec. 2, 2005 against Kalamazoo. Individually, Jaelencia Williams five blocks are the most by a Mastodon since Ariana Simmons also had five against Ball State on Dec. 29, 2013.

HASTA LA VISTA, BASKETBALL...

The Mastodons were a swatting machine in its season opener, as the 'Dons finished with 10 blocks against IU Kokomo. Their 10 blocks are tied for third most in program history, as the 'Dons had had 11 blocks twice. The last time the Mastodons finished with double-digit blocks as a team came on Nov. 23, 2010 when they had 11 against Indiana Tech.

STOP! THIEF!...

In her first game as a Mastodon, Sierra Bell became only the third player in program history with eight or more steals, when she made eight against IU Kokomo on Nov. 6. The last player to have at least eight was Kayla Drake, whom set a program record with 10 steals at South Dakota State on Jan. 22, 2011.

MAKING THE ROUNDS...

Of the current 32 Division I basketball conferences, Purdue Fort Wayne has taken on at least one school, currently or when they played, in all but four of those leagues. The four remaining conferences the Mastodons have yet to play are: Colonial Athletic Association, Ivy League, Southwestern Athletic Conference, and West Coast Conference. Three other leagues (Big Sky Conference, Pacific 12 Conference, and Southland Conference) Purdue Fort Wayne played a current member while they were a part of another conference.



SEASON OPENERS...

With its season-opening victory over IU Kokomo, the Purdue Fort Wayne women's basketball team improved its all-time record to 17-26 in season openers. The last time the 'Dons won a season opener came during the 2015-16 season when they defeated Trine.

SUMMIT LEAGUE PRESEASON POLL...

Purdue Fort Wayne was picked to finish ninth in the Summit League preseason poll of the league's head coaches. The Mastodons received 181 points as coaches were not allowed to vote for their own teams.

South Dakota State was tabbed as the preseason favorite to win the 2018-19 Summit League Championship, receiving 24 first-place votes to finish atop the poll with 624 points.

2018-19 Summit League Preseason Poll

Place	Team	Points (1st)
1.	South Dakota State	624 (24)
2.	South Dakota	557 (9)
3.	Western Illinois	469
4.	Oral Roberts	435
5.	Denver	431
6.	North Dakota	380
7.	North Dakota State	271
8.	Omaha	233
9.	Purdue Fort Wayne	181

Preseason Player of the Year:

Macy Miller – South Dakota State

First Team

Name	School	Pos.	Year
Macy Miller	South Dakota State	G	Sr.
Madison Guebert	South Dakota State	G	Sr.
Ciara Duffy	South Dakota	G	Jr.
Allison Arens	South Dakota	G	Sr.
Taylor Higginbotham	Western Illinois	G	Sr.
Lexi Klabo	North Dakota	F	Sr.

Second Team

Name	School	Pos.	Year
Myah Selland	South Dakota State	G/F	So.
Maya Mayberry	Oral Roberts	G	So.
Claire Gritt	Denver	G	So.
Madison McKeever	South Dakota	G	Jr.
Tagyn Laron	South Dakota State	F	Jr.

WOMEN'S MID-MAJOR POLL...

(Dec. 26)

Rank	School	Rec.	Pts.
1	Gonzaga (31)	11-1	775
2	South Dakota	12-2	711
3	Drake	8-4	702
4	South Dakota State	8-4	655
5	Central Michigan	8-2	634
6	Buffalo	8-3	633
7	FGCU	10-3	552
8	Ohio	10-0	551
9	Bucknell	9-2	550
10	Marist	9-3	492
11	Penn	7-2	433
12	Drexel	7-3	406
13	Northeastern	10-1	338
14	Green Bay	6-4	330
15	Wright State	8-4	281
16	Belmont	7-3	271
17	Maine	7-3	252
18	James Madison	7-4	271
19	Saint Mary's	7-4	207
20	Princeton	7-7	183
21	BYU	8-3	155
22	UC Irvine	9-2	128
23	South Alabama	11-0	121
24	Toledo	8-3	87
25	Quinnipiac	5-5	85

OTHERS RECEIVING VOTES: Troy 75, Miami 40, Bradley 38, Little Rock 37, IUPUI 33, Portland State 28, Loyola Marymount 21, New Mexico State 12, Pacific 12, UT Martin 7, Stony Brook 6, American 5, UC Davis 5, Northern Colorado 4, Morehead State 1, Stephen F. Austin 1, Youngstown State 1.

ACTIVE CAREER LEADERS...

Points	De'Jour Young, 1,036
Rebounds	De'Jour Young, 513
Field Goals Made	De'Jour Young, 370
3-Pointers Made	Kierstyn Repp, 95
Free Throws Made	De'Jour Young, 247
Assists	De'Jour Young, 166
Steals	De'Jour Young, 115
Blocked Shots	Jaelencia Williams, 43
Games Played	De'Jour Young, 99
Games Started	De'Jour Young, 88
Minutes Played	De'Jour Young, 2,916

Gates Center Attendance Records

1.	1/19/2002	Toledo	1,827
2.	12/10/2006	Indiana	1,801
3.	11/19/2004	Bowling Green	1,438
4.	11/21/2017	UIC	1,289
5.	12/29/2013	Ball State	1,278
6.	1/24/2015	Denver	1,215
7.	1/13/1996	Southern Indiana	1,150
8.	12/6/2014	Northern Kentucky	1,147
9.	12/6/2012	Purdue	1,124
10.	11/12/2013	Indiana	1,085

PURDUE FORT WAYNE WINS VS. LOSSES...

Category	Wins	Losses
Points per game	82.2	58.2
Opp. points per game	58.8	73.1
FG pct.	.518	.367
Opp. field goal pct.	.333	.456
3 pt. FG pct.	.342	.330
Opp. 3 pt. FG pct.	.281	.367
Free throw pct.	.686	.644
Opp. Free throw pct.	.636	.739
Rebounds per game	38.5	31.7
Opp. Rebounds per game	35.5	38.0
Rebound margin	+3.0	-6.3
Assists per game	14.8	10.8
Opp. Assists per game	10.3	16.0
Turnovers per game	15.8	15.9
Opp. Turnovers per game	19.5	13.4
Turnover margin	+3.7	-2.5
Steals per game	11.0	6.3
Opp. Steals per game	6.5	7.2
Blocks per game	8.8	2.2
Opp. Blocks per game	2.5	3.7
Fouls per game	17.0	18.9
Opp. Fouls per game	15.5	16.6

PURDUE FORT WAYNE INDIVIDUAL GAME HIGHS

Points	22	De'Jour Young vs IU Kokomo (11/06/18)
Field Goals Made	8	De'Jour Young at North Dakota State (12/28/18)
	8	Kierstyn Repp vs Goshen (12/16/18)
	8	De'Jour Young vs Goshen (12/16/18)
Field Goal Att.	17	De'Jour Young at North Dakota State (12/28/18)
FG Pct (min 6 made)	1.000 (6-6)	Jaelencia Williams vs Valparaiso (12/19/18)
3-Point FG Made	5	Kierstyn Repp at Eastern Illinois (11/15/18)
3-Point FG Att.	10	Kierstyn Repp vs Valparaiso (12/19/18)
	10	Kierstyn Repp at Eastern Illinois (11/15/18)
	10	Kierstyn Repp vs IU Kokomo (11/06/18)
3-Pt FG Pct (min 3 made)	.750 (3-4)	Hannah Albrecht at Loyola-Chicago (11/29/18)
Free Throws Made	9	Jaelencia Williams vs Eastern Michigan (12/08/18)
Free Throw Att.	12	Jaelencia Williams vs Eastern Michigan (12/08/18)
FT Pct (min 6 made)	.889 (8-9)	De'Jour Young vs Eastern Michigan (12/08/18)
Rebounds	14	De'Jour Young vs Valparaiso (12/19/18)
Assists	7	Anna Lappenkuper vs Goshen (12/16/18)
	7	Hannah Hess at Eastern Illinois (11/15/18)
Steals	8	Sierra Bell vs IU Kokomo (11/06/18)
Blocked Shots	5	Jaelencia Williams vs Goshen (12/16/18)

PURDUE FORT WAYNE TEAM GAME HIGHS

POINTS	87	IU KOKOMO (11/06/18)
FIELD GOALS MADE	35	GOSHEN (12/16/18)
	35	IU KOKOMO (11/06/18)
FIELD GOAL ATTEMPTS	64	at North Dakota State (12/28/18)
FIELD GOAL PERCENTAGE	.565 (35-62)	IU KOKOMO (11/06/18)
3 PT FIELD GOALS MADE	11	at Loyola-Chicago (11/29/18)
	11	at Eastern Illinois (11/15/18)
3 PT FG ATTEMPTS	25	at Milwaukee (12/01/18)
3 PT FG PERCENTAGE	.524 (11-21)	at Loyola-Chicago (11/29/18)
FREE THROWS MADE	23	EASTERN MICHIGAN (12/08/18)
FREE THROW ATTEMPTS	28	EASTERN MICHIGAN (12/08/18)
FREE THROW PERCENTAGE	.857 (18-21)	at North Dakota (12/30/18)
REBOUNDS	41	at Eastern Illinois (11/15/18)
ASSISTS	17	GOSHEN (12/16/18)
STEALS	17	IU KOKOMO (11/06/18)
BLOCKED SHOTS	11	GOSHEN (12/16/18)
TURNOVERS	26	at Eastern Illinois (11/15/18)
FOULS	24	at Purdue (11/18/18)

PURDUE FORT WAYNE TEAM GAME LOWS

POINTS	44	at Purdue (11/18/18)
FIELD GOALS MADE	13	at Milwaukee (12/01/18)
FIELD GOAL ATTEMPTS	49	EASTERN MICHIGAN (12/08/18)
FIELD GOAL PERCENTAGE	.241 (13-54)	at Milwaukee (12/01/18)
3 PT FIELD GOALS MADE	2	SIUE (11/24/18)
3 PT FG ATTEMPTS	14	at North Dakota State (12/28/18)
3 PT FG PERCENTAGE	.118 (2-17)	SIUE (11/24/18)
FREE THROWS MADE	4	at Western Michigan (11/08/18)
	4	at Loyola-Chicago (11/29/18)
FREE THROW ATTEMPTS	8	at Loyola-Chicago (11/29/18)
FREE THROW PERCENTAGE	.400 (4-10)	at Western Michigan (11/08/18)
REBOUNDS	17	at Loyola-Chicago (11/29/18)
ASSISTS	7	SIUE (11/24/18)
STEALS	1	at Eastern Illinois (11/15/18)
BLOCKED SHOTS	0	at Western Michigan (11/08/18)
	0	EASTERN MICHIGAN (12/08/18)
TURNOVERS	11	at Loyola-Chicago (11/29/18)
	11	at North Dakota State (12/28/18)
FOULS	11	at Evansville (11/20/18)

OPPONENT INDIVIDUAL GAME HIGHS

Points	28	Courtne Lewis vs Eastern Michigan (12/08/18)
Field Goals Made	28	Karle Pace at Eastern Illinois (11/15/18)
	10	Ae'Rianna Harris at Purdue (11/18/18)
	10	Karle Pace at Eastern Illinois (11/15/18)
Field Goal Att.	19	Karle Pace at Eastern Illinois (11/15/18)
	19	Taylor Steele at Eastern Illinois (11/15/18)
FG Pct (min 6 made)	1.000 (10-10)	Ae'Rianna Harris at Purdue (11/18/18)
3-Point FG Made	6	Courtne Lewis vs Eastern Michigan (12/08/18)
	6	Janee Gonzales at Loyola-Chicago (11/29/18)
	6	Karle Pace at Eastern Illinois (11/15/18)
3-Point FG Att.	11	Becca Buchs vs Taylor (IN) (11/12/18)
3-Pt FG Pct (min 3 made)	.800 (4-5)	Natalia Pineda vs Eastern Michigan (12/08/18)
Free Throws Made	7	Lexi Klabo at North Dakota (12/30/18)
	7	Sofija Zivaljevic at North Dakota State (12/28/18)
Free Throw Att.	10	Kayana Traylor at Purdue (11/18/18)
FT Pct (min 6 made)	1.000 (7-7)	Lexi Klabo at North Dakota (12/30/18)
Rebounds	12	Abby O'Connor at Loyola-Chicago (11/29/18)
	12	Allie Troeckler vs SIUE (11/24/18)
Assists	7	Jenna Annechiarico vs Eastern Michigan (12/08/18)
	7	Anna Newman at Evansville (11/20/18)
Steals	4	Claire Orth at North Dakota (12/30/18)
	4	Addison Stoller vs Valparaiso (12/19/18)
	4	Kira Arthofer at Eastern Illinois (11/15/18)
Blocked Shots	3	Lexi Klabo at North Dakota (12/30/18)
	3	Ryaen Johnson at Milwaukee (12/01/18)
	3	Kaylan Coffman at Evansville (11/20/18)
	3	Nina Farkic at Western Michigan (11/08/18)

OPPONENT TEAM GAME HIGHS

POINTS	87	EASTERN MICHIGAN (12/08/18)
FIELD GOALS MADE	31	at North Dakota (12/30/18)
FIELD GOAL ATTEMPTS	70	at Eastern Illinois (11/15/18)
FIELD GOAL PERCENTAGE	.617 (29-47)	at Loyola-Chicago (11/29/18)
3 PT FIELD GOALS MADE	12	EASTERN MICHIGAN (12/08/18)
	12	TAYLOR (IN) (11/12/18)
3 PT FG ATTEMPTS	33	TAYLOR (IN) (11/12/18)
3 PT FG PERCENTAGE	.556 (10-18)	at Loyola-Chicago (11/29/18)
FREE THROWS MADE	21	at North Dakota State (12/28/18)
FREE THROW ATTEMPTS	31	at Purdue (11/18/18)
FREE THROW PERCENTAGE	.929 (13-14)	at Loyola-Chicago (11/29/18)
REBOUNDS	46	SIUE (11/24/18)
ASSISTS	22	at Loyola-Chicago (11/29/18)
	22	at Purdue (11/18/18)
STEALS	12	at Eastern Illinois (11/15/18)
BLOCKED SHOTS	6	at Milwaukee (12/01/18)
	6	at Loyola-Chicago (11/29/18)
TURNOVERS	26	IU KOKOMO (11/06/18)
FOULS	22	at North Dakota (12/30/18)

OPPONENT TEAM GAME LOWS

POINTS	45	GOSHEN (12/16/18)
FIELD GOALS MADE	14	GOSHEN (12/16/18)
FIELD GOAL ATTEMPTS	47	at Loyola-Chicago (11/29/18)
FIELD GOAL PERCENTAGE	.226 (14-62)	GOSHEN (12/16/18)
3 PT FIELD GOALS MADE	0	at North Dakota (12/30/18)
3 PT FG ATTEMPTS	7	at North Dakota (12/30/18)
3 PT FG PERCENTAGE	.000 (0-7)	at North Dakota (12/30/18)
FREE THROWS MADE	2	at Evansville (11/20/18)
FREE THROW ATTEMPTS	6	at Evansville (11/20/18)
FREE THROW PERCENTAGE	.333 (2-6)	at Evansville (11/20/18)
REBOUNDS	28	TAYLOR (IN) (11/12/18)
	28	EASTERN MICHIGAN (12/08/18)
ASSISTS	4	GOSHEN (12/16/18)
STEALS	2	at Loyola-Chicago (11/29/18)
BLOCKED SHOTS	0	TAYLOR (IN) (11/12/18)
TURNOVERS	8	at Eastern Illinois (11/15/18)
FOULS	10	GOSHEN (12/16/18)
	10	at North Dakota State (12/28/18)

PURDUE FORT WAYNE TEAM RECORDS (MIN. 20 GAMES)

Record

MOST WINS.....	23 (1995-96)
CONSECUTIVE WINS.....	14 (11/18/95-1/13/96)
MOST HOME WINS.....	12 (1982-83, 1988-89, 1995-96)
CONSECUTIVE HOME WINS.....	12 (12/1/95-2/24/96)
MOST LOSSES	24 (1998-99, 2016-17)
CONSECUTIVE LOSSES	14 (11/13/98-1/16/99)
MOST GAMES PLAYED.....	31 (2010-11)
LARGEST HOME CROWD (GATES)	1,827, Toledo (1/19/02)
LARGEST HOME CROWD (COLISEUM).....	2,500, NDSU (2/26/06)
LARGEST ROAD CROWD	9,194, Wichita State (11/8/13)

Points

GAME HIGH	117, vs Tri-State (12/3/88)
SEASON HIGH	2,431 (1989-90)
GAME LOW.....	28, Indiana State (12/28/02)
SEASON LOW	1,110 (1978-79)

Field Goals Made

GAME HIGH	48, at Southern Indiana (2/7/91)
SEASON HIGH	901 (1989-90)
GAME LOW.....	11, Wichita State (11/8/13)
SEASON LOW	11, Winthrop (12/23/05)
SEASON LOW	443 (1978-79)

Field Goal Attempts

GAME HIGH	92, at Purdue (11/21/04)
SEASON HIGH	1,864 (2007-08)
GAME LOW.....	38, Wichita State (11/8/13)
SEASON LOW	1,263 (1978-79)

Field Goal Percentage

GAME HIGH720 (36-of-50), at IUPUI (1/23/92)
SEASON HIGH492 (877-1782), (1991-92)
GAME LOW.....	.163 (15-of-92), Purdue (11/21/04)
LOW SEASON331 (595-1798), (2004-05)

3-Point Field Goals Made

GAME HIGH	18, at Missouri-St. Louis (2/15/01)
SEASON HIGH	271 (2013-14)
GAME LOW.....	0, Several times
SEASON LOW	13 (1992-93)

3-Point Field Goal Attempts

GAME HIGH	48, vs Bowling Green (11/19/04)
SEASON HIGH	48, vs Grace (12/11/99)
GAME LOW.....	743 (2013-14)
SEASON LOW	0, Several times
SEASON LOW59 (1992-93)

3-Point Field Goal Percentage (min. 10 att.)

GAME HIGH800 (8-of-10), at Cleveland State (1/26/04)
SEASON HIGH430 (89-207), (1989-90)
GAME LOW.....	.000 (0-of-10), St. Joseph's (1/3/91)
LOW SEASON220 (44-200), (1997-98)

Free Throws Made

GAME HIGH	42, vs NKU (12/21/95)
SEASON HIGH	604 (1995-96)
GAME LOW.....	1, Indianapolis (2/20/97) and (3/6/1993)
SEASON LOW	214 (1979-80)

Free Throw Attempts

GAME HIGH	52, vs NKU (12/21/95)
SEASON HIGH	52, at Wayne State (11/16/90)
GAME LOW.....	821 (1991-92)
SEASON LOW	2, Ashland (2/20/88)
SEASON LOW	382 (1982-83)

Free Throw Percentage (min. 10 made/20 att.)

GAME HIGH	1.000 (24-of-24), vs Indiana (11/12/13)
SEASON HIGH794 (409-515), (2012-13)
GAME LOW.....	.433 (13-of-30), Kentucky (11/21/03)
SEASON LOW483 (224-464), (1978-79)

Rebounds

GAME HIGH	65, vs Shippensburg (11/19/95)
SEASON HIGH	1,244 (1991-92)
GAME LOW.....	18, IUPUI (3/2/13)
SEASON LOW	132 (1978-79)

Assists

GAME HIGH	31, at Southern Indiana (2/7/91)
SEASON HIGH	551 (1994-95)
GAME LOW.....	1, Wichita State (11/8/13)
SEASON LOW	1, Hampton (11/29/86)
SEASON LOW	125 (1980-81)

Blocks

GAME HIGH	11, vs Indiana Tech (11/23/10)
SEASON HIGH	11, vs Kalamazoo (12/2/05)
SEASON HIGH	11, vs Goshen (12/16/18)
SEASON HIGH	119 (2009-10)
GAME LOW.....	0, Several times
SEASON LOW	18 (1986-87)

Steals

GAME HIGH	25, vs Kalamazoo (12/2/05)
SEASON HIGH	315 (1990-91)
GAME LOW.....	0, St. Bonaventure (12/2/08)
SEASON LOW	0, UMBC (12/20/05)
SEASON LOW	188 (2008-09)

Turnovers

GAME HIGH	40, Hampton (12/4/87)
SEASON HIGH	655 (1989-99)
GAME LOW.....	5, North Dakota State (1/5/09)
SEASON LOW	184 (1980-81)



PURDUE FORT WAYNE INDIVIDUAL QUARTER HIGHS

Points	13	De'Jour Young, 3rd, at North Dakota State (12/28/18)
FG Made	5 (2x)	De'Jour Young, 3rd, at North Dakota State (12/28/18)
FG Att.	9	MR - De'Jour Young, 3rd, at North Dakota State (12/28/18)
3-Pt FG Made	2	Many times
3-P FG Att.	5	Kierstyn Repp, 4th, vs Valparaiso (12/19/18)
FT Made	4 (4x)	MR - Jaelencia Williams, 3rd, vs Eastern Michigan (12/8/18)
FT Att.	6	Jaelencia Williams, 1st, at Evansville (11/20/18)
Rebounds	6 (2x)	MR - De'Jour Young, 4th, vs Taylor (11/12/18)
Offensive Rebounds	3 (2x)	MR - Sh'Toya Sanders, 3rd, at North Dakota (12/30/18)
Defensive Rebounds	5 (2x)	MR - De'Jour Young, 3rd, vs Valparaiso (12/19/18)
Fouls	4	Anna Lappenkuper, 4th, at North Dakota State (12/28/18)
Assists	4	Anna Lappenkuper, 1st, vs Goshen (12/16/18)
Blocked Shots	3	Jaelencia Williams, 1st, vs Goshen (12/16/18)
Steals	3 (2x)	MR - Sierra Bell, 4th, vs IU Kokomo (11/6/18)

PURDUE FORT WAYNE TEAM QUARTER HIGHS

Points	26	1st, vs Goshen (12/16/18)
1st Quarter Points	26	vs Goshen (12/16/18)
2nd Quarter Points	24	vs IU Kokomo (11/6/18)
3rd Quarter Points	24	vs Taylor (11/12/18)
4th Quarter Points	23 (2x)	MR - vs Taylor (11/12/18)
Fewest Points (Non-OT)	3	1st, at Milwaukee (12/1/18)
FG Made	11	2nd, vs IU Kokomo (11/6/18)
FG Att.	18 (3x)	MR - 3rd, vs Goshen (12/16/18)
Highest FG Pct.	.733 (11-15)	2nd, vs IU Kokomo (11/6/18)
Lowest FG Pct.	.000 (0-12)	1st, at Milwaukee (12/1/18)
3-Pt FG Made	4 (2x)	MR - 2nd, at Milwaukee (12/1/18)
3-Pt FG Att.	10	2nd, vs Taylor (11/12/18)
3-Pt FG Pct. (2 made)	.800 (4-5)	2nd, at Milwaukee (12/1/18)
FT Made	11	4th, at North Dakota (12/30/18)
FT Att.	14	4th, vs Eastern Michigan (12/8/18)
FT Pct (6 made)	1.000 (7-7)	3rd, vs Eastern Michigan (12/8/18)
Rebounds	15	3rd, vs Goshen (12/16/18)
Offensive Rebounds	7	4th, at Milwaukee (12/1/18)
Defensive Rebounds	11	3rd, vs Goshen (12/16/18)
Fouls	10 (2x)	MR - 4th, at North Dakota State (12/28/18)
Assists	6 (4x)	MR - 4th, at North Dakota State (12/30/18)
Turnovers	13	1st, at Eastern Illinois (11/15/18)
Blocked Shots	5	1st, vs Goshen (12/16/18)
Steals	7	4th, vs IU Kokomo (11/6/18)

OPPONENT INDIVIDUAL QUARTER HIGHS

Points	16	Janae Gonzales, 1st, at Loyola-Chicago (11/29/18)
FG Made	5 (2x)	MR - Janae Gonzales, 1st, at Loyola-Chicago (11/29/18)
FG Att.	7 (3x)	MR - Courtnee Lewis, 1st, vs Eastern Michigan (12/8/18)
3-Pt FG Made	4	Janae Gonzales, 1st, at Loyola-Chicago (11/29/18)
3-P FG Att.	5	Courtnee Lewis, 1st, vs Eastern Michigan (12/8/18)
FT Made	5	Emily Dietz, 4th, at North Dakota State (12/28/18)
FT Att.	8	Emily Dietz, 4th, at North Dakota State (12/28/18)
Rebounds	5 (3x)	MR - Abby O'Connor, 2nd, at Loyola-Chicago (11/29/18)
Offensive Rebounds	3 (5x)	MR - Julia Fleecs, 4th, at North Dakota (12/30/18)
Defensive Rebounds	5	Abby O'Connor, 2nd, at Loyola-Chicago (11/29/18)
Fouls	3	Lizzie Odegard, 4th, at Milwaukee (12/1/18)
Assists	5	Kayana Traylor, 2nd, at Purdue (11/18/18)
Blocked Shots	3 (2x)	MR - Ryaen Johnson, 4th, at Milwaukee (12/1/18)
Steals	3	Addison Stoller, 2nd, vs Valparaiso (12/19/18)

OPPONENT TEAM QUARTER HIGHS

Points	31	2nd, at North Dakota (12/30/18)
1st Quarter Points	25	at Eastern Illinois (11/15/18)
2nd Quarter Points	31	at North Dakota (12/30/18)
3rd Quarter Points	24	vs Eastern Michigan (12/8/18)
4th Quarter Points	29	at Loyola-Chicago (11/29/18)
Fewest Points (Non-OT)	6	4th, at Eastern Illinois (11/15/18)
FG Made	12	2nd, at North Dakota (12/30/18)
FG Att.	23	2nd, at Eastern Illinois (11/15/18)
Highest FG Pct.	.857 (6-7)	4th, at Milwaukee (12/1/18)
Lowest FG Pct.	.125 (2-16)	1st, vs Goshen (12/16/18)
3-Pt FG Made	5	3rd, vs Eastern Michigan (12/8/18)
3-Pt FG Att.	10	3rd, at Western Michigan (11/8/18)
3-Pt FG Pct. (2 made)	.833 (5-6)	3rd, vs Eastern Michigan (12/8/18)
FT Made	12	4th, at North Dakota State (12/28/18)
FT Att.	18	4th, at North Dakota State (12/30/18)
FT Pct (6 made)	1.000 (9-9)	4th, vs Eastern Michigan (12/8/18)
Rebounds	15	3rd, at Milwaukee (12/1/18)
Offensive Rebounds	8	1st, vs Goshen (12/16/18)
Defensive Rebounds	11	3rd, at Milwaukee (12/1/18)
Fouls	8	4th, at Evansville (11/20/18)
Assists	9	2nd, at Purdue (11/18/18)
Turnovers	8 (2x)	MR - 4th, at Milwaukee (12/1/18)
Blocked Shots	4	4th, at Loyola-Chicago (11/29/18)
Steals	5 (2x)	MR - 1st, at Eastern Illinois (11/15/18)

PURDUE FORT WAYNE INDIVIDUAL RECORDS

Points
GAME..... 43, Lindy Jones at St. Joseph's (1/27/96)
..... 43, Amanda Hyde at Southern Illinois (11/29/12)
SEASON..... 752, Lisa Miller (1991-92)
CAREER..... 2358, Lisa Miller (1988-92)

Scoring Average
SEASON..... 26.0, Lindy Jones (1995-96)
CAREER..... 21.2, Lisa Miller (1988-92)

Field Goals Made
GAME..... 18, Lindy Jones at St. Joseph's (1/27/96)
SEASON..... 243, Lisa Miller (1991-92)
CAREER..... 808, Lisa Miller (1988-92)

Field Goals Attempted
GAME..... 30, Lindy Jones at St. Joseph's (1/27/96)
SEASON..... 537, Johnna Lewis-Carlisle (2007-08)
CAREER..... 1658, Johnna Lewis-Carlisle (2004-08)

Field Goal Percentage (min. 10 att.)
GAME..... .909 (10-of-11), Stephanie Rosado at Centenary (12/31/10)
SEASON.. .578 (170-294), Rhonda Unverferth (1984-85)
CAREER..... .561 (216-385), Amy Neuhouser (1988-90)

3-Point Field Goals Made
GAME..... 9, Jamie Holderman vs SIUE (2/1/01)
..... 9, Jamie Holderman at Bellarmine (1/13/00)
SEASON..... 96, Anne Boese (2009-10)
CAREER..... 301, Anne Boese (2008-12)

3-Point Field Goals Attempted
GAME..... 17, Anne Boese at Oral Roberts (12/29/10)
..... 17, Jordan Zuppe vs Toledo (11/29/08)
..... 17, Jamie Holderman at Missouri-St. Louis (2/15/01)
SEASON..... 96, Anne Boese, (2009-10)
CAREER..... 768, Anne Boese, (2008-12)

3-Point Field Goal Percentage (min. 5 att.)
GAME..... 1.000 (6-of-6), Hilary O'Connell vs UMBC (12/20/05)
SEASON..... .461 (41-89), Trish Fleming (2000-01)
CAREER..... .413 (229-555), Haley Seibert (2011-15)

Free Throws Made
GAME.... 22, Ashley Johnson vs North Dakota State (2/26/06)
SEASON..... 266, Lisa Miller, (1991-92)
CAREER..... 741, Lisa Miller, (1988-92)

Free Throw Attempts
GAME..... 24, Lisa Miller at Wayne State (11/16/90)
SEASON..... 336, Lisa Miller, (1991-92)
CAREER..... 922, Lisa Miller, (1988-92)

Free Throw Percentage (min. 9 att.)
GAME... 1.000 (14-of-14) Haley Seibert vs NKU (12/6/14)
..... 1.000 (14-of-14) Amanda Hyde vs Indiana (11/12/13)
..... 1.000 (14-of-14) Amanda Hyde vs Purdue (12/6/12)
..... 1.000 (14-of-14) Lisa Miller vs St. Joseph's (1/2/92)
..... 1.000 (14-of-14) Lisa Miller vs Tri-State (12/3/88)
SEASON..... .914 (127-139), Haley Seibert (2014-15)
CAREER..... .868 (315-363), Haley Seibert (2011-15)

Rebounds
GAME..... 23, Vereba Bibbs vs UALR (11/28/03)
SEASON..... 280, Pam Edwards, (1991-92)
CAREER..... 937, Lisa Miller, (1988-92)

Rebound Average
SEASON..... 10.9, Ann McCleneghen (1979-80)
CAREER..... 8.4, Lisa Miller (1988-92)

Assists
GAME... 15, Wendy Recker vs Southern Indiana (1/28/95)
SEASON..... 197, Wendy Recker, (1994-95)
CAREER..... 419, Wendy Recker, (1993-96)

Assists Average
SEASON..... 7.3, Wendy Recker (1994-95)
CAREER..... 5.1, Wendy Recker (1993-96)

Blocks
GAME..... 8, Stephanie Rosado Indiana Tech (11/23/10)
SEASON..... 47, Stephanie Rosado, (2010-11)
CAREER..... 130, Jennie Newhard, (1992-96)

Blocks Average
SEASON..... 1.6, Jennie Newhard (1993-94)
..... 1.6, Shalauna McMillan (1996-97)
CAREER..... 1.3, Jennie Newhard (1992-96)

Steals
GAME.. 10, Kayla Drake at South Dakota State (1/22/11)
SEASON..... 80, Sue Hendricks, (1980-81)
CAREER..... 249, Lindy Jones, (1992-96)

Steals Average
SEASON..... 3.5, Sue Hendricks (1980-81)
CAREER..... 2.8, Laure Renninger (1982-84)

Games Played
SEASON..... 31, Amanda Hyde (2010-11)
..... 31, Stephanie Rosado (2010-11)
..... 31, Erin Murphy (2010-11)
..... 31, Anne Boese (2010-11)
..... 31, Jordan Zuppe (2010-11)
CAREER..... 121, Jordan Zuppe (2007-11)

Games Started
SEASON..... 31, Anne Boese (2010-11)
..... 31, Stephanie Rosado (2010-11)
..... 31, Jordan Zuppe (2010-11)
CAREER..... 118, Jordan Zuppe (2007-11)

THE LAST TIME PURDUE FORT WAYNE...
IN THE RANKINGS

Was Ranked	No. 18, 3/7/1996
Played a Ranked (AP) Team	at No. 23 Michigan, 12/16/2017 (L, 77-45)
Defeated a Ranked (AP) Team	at No. 21 Michigan State, 12/1/2013 (W, 81-76)

CONSECUTIVE GAME STREAKS

Won 5+ Consecutive Games	Dec. 31, 2010 - Jan. 24, 2011 (6 straight)
Won 10+ Consecutive Games	Nov. 18, 1995 - Jan. 13, 1996 (14 straight)
Lost 5+ Consecutive Games	Jan. 13, 2018 - Mar. 3, 2018 (11 straight)
Lost 10+ Consecutive Games	Jan. 13, 2018- Mar. 3, 2018 (11 straight)

SCORING

Scored 20-24 points	Kierstyn Repp (20), vs. Goshen, 12/16/2018
Scored 25-29 points	Josie Fisher (28), at Western Illinois, 2/4/2016
Scored 30-39 points	Kamilah Carter (30), vs. North Dakota State, 2/27/2016
Scored ≥ 40 points	Amanda Hyde (41), at SIUE, 11/26/2013
Freshman Scored 25+ points	Josie Fisher (28), at Western Illinois, 2/4/2016
Came off the bench to score 20	Kierstyn Repp (23), at North Dakota State, 1/20/2018
Consecutive 25 point games	Amanda Hyde, (28), vs. Denver, 3/9/2014; (25), at UIC, 3/19/2014
Hit game-winning shot under :30	Anna Lappenküper (FG/0:00.0) vs. Quincy, 11/25/2017
Four-point play	Courtney Ogle, 2-18, 2nd quarter, at IUPUI, 2/21/2016
Two players scored 20 points	Josie Fisher (28) and Kamilah Carter (22), at Western Illinois, 2/4/2016
Three players scored 20 points	vs. Omaha, 3/1/2014

.....	Haley Seibert (23), Ariana Simmons (22), Amanda Hyde (20)
None in double figures	at Western Michigan, 12/6/2016
One in double figures	De'Jour Young (19), at North Dakota State, 12/28/2018
Two in double figures	Kiertyn Repp (12) and De'Jour Young (10), at Milwaukee, 12/1/2018
Three in double figures	at North Dakota, 12/30/2018

.....	Sh'Toya Sanders (12), De'Jour Young (10) and Jaelencia Williams (10)
Four in double figures	vs. Valparaiso, 12/19/2018
.....	Jaelencia Williams (15), Kierstyn Repp (13), De'Jour Young (13) and Anna Lappenküper (12)
Five in double figures	vs. IU Kokomo, 11/6/2018De'Jour Young (22),

.....	Sierra Bell (15), Sh'Toya Sanders (13), Kierstyn Repp (13) and Jaelencia Williams (11)
Six in double figures	vs. Loyola-Chicago, 11/12/2017; Hannah Albrecht (16), De'Jour Young (12),
.....	KeShyra McCarver (12), Kierstyn Repp (12), Anna Lappenküper (12) and Jaelencia Williams (11)

Scored ≥ 25 points/quarter	26, 1st quarter, vs. Goshen, 12/16/2018
Scored ≥ 50 points/half	50, 2nd half, vs. Eastern Illinois, 12/8/2017
Scored ≥ 100 points	101, vs. Indiana Tech, 12/11/2013
Scored ≥ 100 points/road game	112, at Indiana-South Bend, 1/9/2002
Scored ≥ 100 points/neutral site	106, vs. Western Illinois, 3/10/2013 (@ Souix Falls, S.D.)
Scored < 10 points/quarter	4, 2nd quarter, at North Dakota State, 12/28/2018
Scored ≤ 20 points/half	13, 1st half, at North Dakota State, 12/28/2018
Scored ≤ 30 points/half	23, 1st half, at North Dakota, 12/30/2018
Scored < 50 points/game	48, at Milwaukee, 12/1/2018
Overcame 10-point deficit to win	10, vs. North Dakota State, 31-21 (4:48, 2nd), 2/11/2017
Overcame 15-point deficit to win	17, at IUPUI, 40-23 (19:17, 2nd), 12/23/2004
Won by 40 or more points	52, vs. Grace, 91-39, 11/16/15

FIELD GOAL SHOOTING

Shot ≥ 60%/quarter	714 (9-of-18), 2nd quarter, vs. Goshen, 12/16/2018
Shot ≥ 70%/quarter	714 (9-of-18), 2nd quarter, vs. Goshen, 12/16/2018
Shot ≥ 60%/half	667 (20-of-30), 1st half, vs. Goshen, 12/16/2018
Shot ≥ 70%/half	727 (16-of-22), 2nd half, vs. Eastern Illinois, 12/8/2017
Shot ≥ 60%/game	708 (34-of-48), vs. Eastern Illinois, 12/8/2017
Shot ≥ 70%/game	708 (34-of-48), vs. Eastern Illinois, 12/8/2017
Shot ≤ 20%/quarter	143 (2-of-14), 2nd quarter, at North Dakota State, 12/28/2018
Shot ≤ 20%/half	194 (6-of-31), 1st half, at North Dakota State, 12/28/2018
Shot ≤ 30%/quarter	286 (4-of-18), 2nd quarter, at North Dakota, 12/30/2018
Shot ≤ 30%/half	290 (9-of-31), 1st half, at North Dakota, 12/30/2018
Shot ≤ 30%/game	241 (13-of-54), at Milwaukee, 12/1/2018
Shot ≤ 30%/game and won	288 (15-of-52), vs. Oral Roberts, 2/17/2016
Shot ≥ 50%/game and lost	532 (25-of-47), at South Dakota State, 2/8/2015

THREE-POINTERS

Made 6	Kierstyn Repp (6), at Coastal Carolina, 12/4/2017
Made 7	Kierstyn Repp (7), at North Dakota State, 1/20/2018
Made 8	Anne Boese (8), vs. Butler, 11/20/2011
Made 9	Jamie Holderman (9), vs. SIU-Edwardsville, 2/1/2001
Attempted ≥ 10	Kierstyn Repp (10), vs. Valparaiso, 12/19/2018
Attempted ≥ 15	Anne Boese (17), at Oral Roberts, 12/29/2010
Purdue Fort Wayne Made ≥ 15	16, at Chicago State, 12/4/2014
Purdue Fort Wayne Did not make a three-pointer	at Western Michigan, 12/6/2016
Purdue Fort Wayne Attempted ≥ 30	30, at North Dakota State, 1/20/2018
Purdue Fort Wayne Attempted ≥ 44	48, vs. Bowling Green, 11/19/2004
Purdue Fort Wayne Shot 60% (min. 10 att.)600 (6-of-10), vs. Defiance, 11/12/2016

FREE THROWS

Made 10-of-10 or better	10-10, Josie Fisher, vs. North Dakota State, 2/27/2016
Purdue Fort Wayne Shot 90% (min. 10 att.)905 (19-of-21), vs. Omaha, 1/9/2018
Purdue Fort Wayne Shot ≤ 50%	500 (5-of-10), at North Dakota State, 12/28/2018
Purdue Fort Wayne Made ≥ 40	40 (attempted 48) vs. Southern Indiana, 2/6/1992
Purdue Fort Wayne Made ≤ 5 FTs	4 (attempted 8), at Loyola-Chicago, 11/29/2018
Purdue Fort Wayne Attempted ≥ 50 FTs	52 (made 42), vs. Northern Kentucky, 12/21/1995
Purdue Fort Wayne Attempted ≤ 5 FTs	5 (made 4), vs. Western Illinois, 12/28/2016

MINUTES PLAYED

Played every minute	40, Kierstyn Repp, vs. Eastern Michigan, 12/8/2018
Two or more played every minute	at Loyola-Chicago, 11/29/2018
.....	40, Hannah Albrecht and De'Jour Young

REBOUNDS

Had ≥ 10 rebounds	De'Jour Young (14), vs. Valparaiso, 12/19/2018
Two Players Had ≥ 10 rebounds	vs. USC Upstate, 11/21/2015
.....	Courtney Ogle (10) and De'Jour Young (10)
Three Players Had ≥ 10 rebounds	at Saint Joseph's (IN), 2/9/1999
.....	Angie Womack (12), Katie Bruening (12), and Laura Douglas (10)
Had ≥ 15 rebounds	Keanna Gary (16), at Denver, 1/9/2016
Had ≥ 20 rebounds	Verea Bibbs (23), vs. UALR, 11/28/2003
Had 10 rebounds in consecutive games	Keanna Gary
.....	(16), at Denver, 1/9/2016 and (11) vs. South Dakota State, 1/13/2016
Had 10 rebounds in three consecutive games	Keanna Gary
.....	(16) vs. Western Illinois, 1/7/2016; (16), at Denver, 1/9/2016; and (11) vs. South Dakota State, 1/13/2016
Had 10 rebounds in four consecutive games	Keanna Gary
.....	(10), vs. IUPUI, 1/1/2016; (16), vs. Western Illinois, 1/7/2016;
.....	(16), at Denver, 1/9/2016; and (11) vs. South Dakota State, 1/13/2016
Had 10 rebounds in five consecutive games	Lisa Miller
.....	(13) at Kentucky Wesleyan, 2/18/1989; (10) vs. Northern Kentucky, 2/23/1989;
.....	(13) vs. Ashland, 2/25/1989; (16) vs. Wayne State, 2/28/1989; and (12) vs. Taylor, 11/17/1989
Purdue Fort Wayne had ≥ 50 rebounds	52, vs. Detroit , 12/2/2014
Purdue Fort Wayne had ≥ 60 rebounds	65, vs. Shippensburg, 11/19/1995

DOUBLE-DOUBLES

Last Player	De'Jour Young (13 pts/14 rbs), vs. Valparaiso, 12/19/2018
Freshman	KeShyra McCarver (22 pts/14 rbs), at Illinois, 11/14/2014
Points & Assists	De'Jour Young (13 pts/14 rbs), vs. Valparaiso, 12/19/2018
Points & Assists	Maggie Bruening (12 pts/10 ast), vs. Morehead State, 1/5/2004
Points & Steals	Kayla Drake (27 pts/10 stl), at South Dakota State, 1/22/2011
Rebounds & Assists	Lindsay Wertz (10 rbs/10 ast), at Quincy, 2/17/2001
Double-double in consecutive games	Keanna Gary
.....	(10 pts/10 rbs), vs. IUPUI, 1/1/2016; (10 pts/16 rbs), vs. Western Illinois, 1/7/2016
Double-double in three consecutive games	Stephanie Rosado
.....	(14 pts/10 rbs), vs. Akron, 11/15/2010; (22 pts/12 rbs), at Youngstown State, 11/20/2010;
.....	(31 pts/13 rbs), vs. Indiana Tech, 11/23/2010
Double-double in four consecutive games	Sarah Turner
.....	(16 pts/11 rbs), vs. Ashland, 1/4/1988; (22 pts/13 rbs), vs. Lewis, 1/9/1988;
.....	(15 pts/10 rbs), vs. Huntington 1/16/1988; (17 pts/10 rbs), vs. Kentucky Wesleyan, 1/21/1988
Two players had double-doubles	at North Dakota State, 1/9/2014
.....	Amanda Hyde (35 pts/10 rbs) and Stefanie Mauk (12 pts/10 rbs)
Three players had double-doubles	vs. Taylor, 11/17/1989 (@ Huntington, Ind.)
.....	Lisa Miller (20 pts/12 rbs), Robin Scott (14 pts/10 rbs), and Pam Edwards (11 pts/11 rbs)
30 points and 10 rebounds	Amanda Hyde (35 pts/10 rbs), at North Dakota State, 1/9/2014
20 points and 15 rebounds	Stefanie Mauk (20 pts/15 rbs), vs. Rochester, 12/22/2012
30 points and 15 rebounds	Pam Edwards (31 pts/18 rbs), vs. Ashland, 1/25/1992

ASSISTS

Had ≥ 8 assists	Rachel Rinehart (8), vs. Western Illinois, 1/2/2015
Had ≥ 9 assists	Amanda Hyde (9), at Detroit, 12/21/2013
Had ≥ 10 assists	Jordan Zuppe (11), vs. Oral Roberts, 1/29/2011
Had ≥ 15 assists	Wendy Recker (15), vs. Southern Indiana, 1/28/1995
Had 10 assists in consecutive games	Maggie Bruening
.....	(10), vs. Morehead State, 1/5/2004; (10), vs. Air Force, 1/7/2004
Purdue Fort Wayne had 20-24 assists	20, vs. Kent State, 11/19/2015
Purdue Fort Wayne had 25-29 assists	28, vs. Kalamazoo, 12/2/2005
Purdue Fort Wayne had ≥ 30 assists	31, vs. Southern Indiana, 2/7/1991
Purdue Fort Wayne had ≤ 5 assists	5, vs. South Dakota State, 2/24/2018

BLOCKED SHOTS

Blocked 5-6 shots	Jaelencvia Williams (5), vs. Goshen, 12/16/2018
Blocked ≥ 7 shots	Stephanie Rosado (8), vs. Indiana Tech, 11/23/2010
Fort Wayne blocked ≥ 10 shots	11, vs. Goshen, 12/16/2018

STEALS

Had 5 steals	Rachel Rinehart vs. Western Illinois, 12/28/2016
Had 6 steals	Rachel Rinehart vs. Oral Roberts, 1/21/2017
Had 7 steals	Haley Seibert at North Dakota State, 1/17/2015
Had ≥ 8 steals	Sierra Bell (8), vs. IU Kokomo, 11/6/2018
Two Players Had ≥ 5 steals	at Milwaukee, 12/28/2015
.....	Rachel Rinehart (6) and Josie Fisher (5)
Had 5 steals in consecutive games	Kayla Drake
.....	(10), at South Dakota State, 1/22/2011; (6), at North Dakota State, 1/24/2011
Purdue Fort Wayne had ≥ 20 steals	21, at Milwaukee, 12/28/2015

TURNOVERS

Committed ≥ 20 turnovers	26, at Eastern Illinois, 11/15/2018
Committed ≥ 25 turnovers	26, at Eastern Illinois, 11/15/2018
Committed ≤ 5 turnovers	5, at Western Illinois, 2/4/2016
Committed < 10 turnovers	9, at Denver, 2/4/2017

OVERTIME

Played an OT game	at Coastal Carolina (L, 64-58), 12/4/2017
Played multiple overtimes	at North Dakota State (W, 98-89, 2ot), 1/9/2014
Won an OT game	at North Dakota State (W, 98-89, 2ot), 1/9/2014
Won in multiple overtimes	at North Dakota State (W, 98-89, 2ot), 1/9/2014
Won an OT game at home	vs. UMKC (W, 82-76), 12/3/2011
Won an OT game at neutral site	vs. Western Illinois (W, 106-101, 2ot), 3/10/2013
Won an OT game on the road	at North Dakota State (W, 98-89, 2ot), 1/9/2014
Lost an OT game	at Coastal Carolina (L, 64-58), 12/4/2017
Lost in multiple overtimes	at Hampton (L, 78-77, 2ot), 12/19/2010
Lost an OT game at home	vs. Detroit (L, 81-74), 12/2/2014
Lost an OT game on the road	at Coastal Carolina (L, 64-58), 12/4/2017





00

JAELENCIA WILLIAMS

Sophomore | 6-2

Indianapolis, Ind.

Southport

CENTER

CAREER NOTES

- Majoring in Visual Communication Design

PRIOR TO FORT WAYNE

- Led her team in scoring with 15.7 points, 9.3 rebounds and 1.9 blocks per game
- Was an All-Conference Indiana First-Team selection
- Named to the Indiana Basketball Coaches Association Large School All-State Team

CAREER VS. SOUTH DAKOTA STATE

			Total		3-Point		F-Throws			Rebounds											Scoring	
Season	gp-gs	min/avg	fg-fga	pct	fg-fga	pct	ft-fga	pct	off	def	tot	avg	pf	fo	ast	to	blk	stl	pts	avg		
2017-18	2-1	43/21.5	9-18	.500	1-1	1.000	8-13	.615	6	6	12	6.0	7	0	1	3	2	1	27	13.5		
TOTAL	2-1	43/21.5	9-18	.500	1-1	1.000	8-13	.615	6	6	12	6.0	7	0	1	3	2	1	27	13.5		

SINGLE-GAME HIGHS [all-time ranking]:

Points: 14, South Dakota State -- 02/24/18

Rebounds: 6, at South Dakota State -- 01/27/18; South Dakota State -- 02/24/18

Assists: 1, at South Dakota State -- 01/27/18

Steals: 1, South Dakota State -- 02/24/18

Blocks: 1, at South Dakota State -- 01/27/18; South Dakota State -- 02/24/18

FG made: 5, South Dakota State -- 02/24/18

FG attempts: 10, at South Dakota State -- 01/27/18

3FG made: 1, at South Dakota State -- 01/27/18

3FG attempts: 1, at South Dakota State -- 01/27/18

FT made: 4, at South Dakota State -- 01/27/18; South Dakota State -- 02/24/18

FT attempts: 8, at South Dakota State -- 01/27/18

SEASON STATS

Opponent	Date	gs		min	Total		3-Pointers		Free throws		Rebounds				pf	a	t/o	blk	stl	pts	avg
		q1	q2		fg-fga	pct	3fg-fga	pct	ft-fga	pct	off	def	tot	avg							
IU KOKOMO	11/06/18			15	5-8	.625	0-0	.000	0-3	.000	1	3	4	4.0	1	0	2	1	0	10	10.0
at Western Michigan	11/08/18			12	3-8	.375	0-0	.000	3-4	.750	2	1	3	3.5	2	0	2	0	1	9	9.5
TAYLOR (IN)	11/12/18			23	5-5	1.000	0-0	.000	2-4	.500	4	1	5	4.0	2	0	1	3	0	12	10.3
at Eastern Illinois	11/15/18			16	3-4	.750	0-0	.000	1-3	.333	1	6	7	4.8	2	0	3	2	0	7	9.5
at Purdue	11/18/18	*		20	2-4	.500	0-0	.000	1-6	.167	0	2	2	4.2	4	0	2	1	0	5	8.6
at Evansville	11/20/18			16	2-4	.500	0-0	.000	3-8	.375	2	1	3	4.0	1	0	1	1	0	7	8.3
SIUE	11/24/18			15	2-3	.667	0-0	.000	4-5	.800	0	1	1	3.6	3	0	0	1	0	8	8.3
at Loyola-Chicago	11/29/18	*		9	2-4	.500	0-0	.000	0-0	.000	0	2	2	3.4	2	0	2	0	0	4	7.8
at Milwaukee	12/01/18			28	2-10	.200	0-0	.000	4-8	.500	4	4	8	3.9	4	3	4	2	1	8	7.8
EASTERN MICHIGAN	12/08/18	*		30	6-12	.500	0-0	.000	9-12	.750	3	3	6	4.1	3	1	1	0	0	21	9.1
GOSHEN	12/16/18	*		24	5-8	.625	0-0	.000	3-4	.750	3	6	9	4.5	3	1	7	5	0	13	9.5
VALPARAISO	12/19/18	*		26	6-6	1.000	0-0	.000	3-7	.429	7	1	8	4.8	4	0	1	0	1	15	9.9
at North Dakota State	12/28/18	*		11	0-5	.000	0-0	.000	0-0	.000	1	3	4	4.8	2	0	0	0	0	0	9.2
at North Dakota	12/30/18			16	5-9	.556	0-0	.000	0-0	.000	2	3	5	4.8	1	0	1	1	0	10	9.2
Totals		6	261		48-90	.533	0-0	.000	33-64	.516	30	37	67	4.8	34	5	27	17	3	129	9.2

Games played: 14
Minutes/game: 18.6
Points/game: 9.2
FG Pct: 53.3
FT Pct: 51.6

Rebounds/game: 4.8
Assists/game: 0.4
Turnovers/game: 1.9
Assist/turnover ratio: 0.2
Steals/game: 0.2
Blocks/game: 1.2

CAREER STATS

			Total		3-Point		F-Throws		Rebounds											Scoring	
Season	gp-gs	min/avg	fg-fga	pct	fg-fga	pct	ft-fga	pct	off	def	tot	avg	pf	fo	ast	to	blk	stl	pts	avg	
2017-18	28-15	518/18.5	91-190	.479	2-3	.667	45-66	.682	60	77	137	4.9	48	0	10	44	26	7	229	8.2	
2018-19	14-6	261/18.6	48-90	.533	0-0	.000	33-64	.516	30	37	67	4.8	34	0	5	27	17	3	129	9.2	
TOTAL	42-21	779/18.5	139-280	.496	2-3	.667	78-130	.600	90	114	204	4.9	82	0	15	71	43	10	358	8.5	

SEASON HIGH	CATEGORY	CAREER HIGH
30, vs. Eastern Michigan, 12/8/2018.....	Minutes.....	30, vs. Eastern Michigan, 12/8/2018
21, vs. Eastern Michigan, 12/8/2018.....	Points.....	21, vs. Eastern Michigan, 12/8/2018
9, vs. Goshen, 12/16/2018.....	Rebounds.....	10, at Illinois, 11/10/2017
3, at Milwaukee, 12/1/2018.....	Assists.....	3, two times
1, three times.....	Steals.....	2, at Belmont, 12/16/2017
5, vs. Goshen, 12/16/2018.....	Blocks.....	5, vs. Goshen, 12/16/2018
6, two times.....	FG Made.....	7, vs. South Dakota, 3/3/2018
12, vs. Eastern Michigan, 12/8/2018.....	FG Attempts ..	14, vs. Loyola-Chicago, 11/12/2017
.....	3-PT Made.....	1, two times
.....	3-PT Attempts.....	1, three times
9, vs. Eastern Michigan, 12/8/2018.....	FT Made.....	9, vs. Eastern Michigan, 12/8/2018
12, vs. Eastern Michigan, 12/8/2018.....	FT Attempts ..	12, vs. Eastern Michigan, 12/8/2018

ABOUT INDIANAPOLIS, INDIANA

- Is the capital and largest city of the state of Indiana, founded in 1821
- Home of the NFL's Indianapolis Colts and NBA's Indiana Pacers
- The long list of notable people from greater Indianapolis include: Jane Pauley, Brendan Fraser, Steve McQueen, Gordon Hayward, Oscar Robertson, John Wooden and David Letterman

ABOUT SOUTHPORT HIGH SCHOOL

- Nickname is the Cardinals
- Notable alumni include former ABA and Naismith Memorial Basketball Hall of Famer Louie Dampier, former MLB player Chuck Klein, soap opera star Terry Lester, and current outfielder for the Philadelphia Phillies Cameron Perkins



3

SIERRA
BELL

Junior | 5-7
Danville, Ill.
Schlarman Academy
Northeast Community College

GUARD

SEASON HIGH	CATEGORY	CAREER HIGH
22, vs. IU Kokomo, 11/6/2018	Minutes	22, vs. IU Kokomo, 11/6/2018
15, vs. IU Kokomo, 11/6/2018	Points	15, vs. IU Kokomo, 11/6/2018
8, vs. IU Kokomo, 11/6/2018	Rebounds	8, vs. IU Kokomo, 11/6/2018
5, vs. IU Kokomo, 11/6/2018	Assists	5, vs. IU Kokomo, 11/6/2018
8, vs. IU Kokomo, 11/6/2018	Steals	8, vs. IU Kokomo, 11/6/2018
1, two times	Blocks	1, two times
5, vs. IU Kokomo, 11/6/2018	FG Made	5, vs. IU Kokomo, 11/6/2018
10, at Western Michigan, 11/8/2018	FG Attempts	10, at Western Michigan, 11/8/2018
2, at Eastern Illinois, 11/15/2018	3-PT Made	2, at Eastern Illinois, 11/15/2018
3, two times	3-PT Attempts	3, two times
4, three times	FT Made	4, three times
5, vs. SIUE, 11/24/2018	FT Attempts	5, vs. SIUE, 11/24/2018

CAREER NOTES

- Transferred in for the 2018-19 season
- Majoring in Criminal Justice

PRIOR TO FORT WAYNE

- Played at Northeast Community College in Norfolk, Nebraska for two seasons
- In 2017-18, led the team in assists (3.3 per game) and steals (1.9 per game). Averaged 10.7 points per game
- Named to the Iowa Community College Athletic Conference's (ICCAC) 2017-18 Division I All-Region First Team

ABOUT DANVILLE, ILLINOIS

- Founded in 1827 | Population of 33,027
- Notable people from Danville include: Gene Hackman, Dick Van Dyke, Jerry Van Dyke, Robin Yount and Irving Azoff

ABOUT SCHLARMAN ACADEMY

- Nickname is the Hilltoppers
- Notable alumni include former NFL player Zeke Bratkowski

SEASON STATS

Opponent	Date	gs	min	Total		3-Pointers		Free throws		Rebounds				pf	a	t/o	blk	stl	pts	avg
				fg-fga	pct	3fg-fga	pct	ft-fta	pct	off	def	tot	avg							
IU KOKOMO	11/06/18		22	5-8	.625	1-1	1.000	4-4	1.000	3	5	8	8.0	3	5	6	0	8	15	15.0
at Western Michigan	11/08/18		21	4-10	.400	0-2	.000	0-0	.000	0	5	5	6.5	3	3	1	0	2	8	11.5
TAYLOR (IN)	11/12/18		13	1-8	.125	0-3	.000	2-2	1.000	0	2	2	5.0	4	2	1	0	1	4	9.0
at Eastern Illinois	11/15/18		13	3-5	.600	2-3	.667	0-0	.000	1	1	2	4.3	2	1	2	0	0	8	8.8
at Purdue	11/18/18		13	0-3	.000	0-1	.000	1-2	.500	0	0	0	3.4	2	1	1	0	0	1	7.2
at Evansville	11/20/18		6	0-0	.000	0-0	.000	0-0	.000	0	2	2	3.2	0	0	1	1	0	0	6.0
SIUE	11/24/18		16	2-5	.400	0-1	.000	4-5	.800	1	4	5	3.4	2	3	2	0	0	8	6.3
at Loyola-Chicago	11/29/18		18	3-9	.333	0-0	.000	1-3	.333	1	0	1	3.1	4	3	2	1	2	7	6.4
at Milwaukee	12/01/18		dnp	-	-	-	-	-	-	-	-	-	-	-	-	-	-	-	-	-
EASTERN MICHIGAN	12/08/18		dnp	-	-	-	-	-	-	-	-	-	-	-	-	-	-	-	-	-
GOSHEN	12/16/18		dnp	-	-	-	-	-	-	-	-	-	-	-	-	-	-	-	-	-
VALPARAISO	12/19/18		dnp	-	-	-	-	-	-	-	-	-	-	-	-	-	-	-	-	-
at North Dakota State	12/28/18		11	1-5	.200	0-0	.000	0-0	.000	0	3	3	3.1	2	0	2	0	0	2	5.9
at North Dakota	12/30/18		8	1-5	.200	0-1	.000	4-4	1.000	0	1	1	2.9	2	1	3	0	1	6	5.9
Totals		0	141	20-58	.345	3-12	.250	16-20	.800	6	23	29	2.9	24	19	21	2	14	59	5.9

Games played: 10
 Minutes/game: 14.1
 Points/game: 5.9
 FG Pct: 34.5
 3FG Pct: 25.0
 FT Pct: 80.0

Rebounds/game: 2.9
 Assists/game: 1.9
 Turnovers/game: 2.1
 Assist/turnover ratio: 0.9
 Steals/game: 1.4
 Blocks/game: 0.2

CAREER STATS

Season	gp-gs	min/avg	Total fg-fga	pct	3-Point fg-fga	pct	F-Throws ft-fta	pct	Rebounds off	def	tot	avg	pf	fo	ast	to	blk	stl	Scoring pts	avg
2018-19	10-0	141/14.1	20-58	.345	3-12	.250	16-20	.800	6	23	29	2.9	24	0	19	21	2	14	59	5.9
TOTAL	10-0	141/14.1	20-58	.345	3-12	.250	16-20	.800	6	23	29	2.9	24	0	19	21	2	14	59	5.9



4

ELLIE DYKSTRA

Freshman | 6-1
 Byron Center Mich.
 Byron Center

FORWARD

CAREER NOTES

- Majoring in Business
- Uncle Jeff played football at Western Michigan for four years, other uncle Todd played football for four seasons at Saginaw Valley State, brother Mitchell played baseball at Muskegon Community College.

PRIOR TO FORT WAYNE

- Three-time Class A All-Ottawa-Kent Conference selection
- Three-time All-Area honoree
- Named a Basketball Coaches Association of Michigan Class A Honorable Mention her last two seasons
- Averaged 13.9 points, 6.0 rebounds, 4.4 assists and 3.2 steals her junior year.

SEASON HIGH	CATEGORY	CAREER HIGH
19, vs. Goshen, 12/16/2018.....	Minutes.....	19, vs. Goshen, 12/16/2018
6, vs. Eastern Michigan, 12/8/2018.....	Points.....	6, vs. Eastern Michigan, 12/8/2018
7, vs. IU Kokomo, 11/6/2018.....	Rebounds.....	7, vs. IU Kokomo, 11/6/2018
1, at Western Michigan, 11/8/2018.....	Assists.....	1, at Western Michigan, 11/8/2018
1, two times.....	Steals.....	1, two times
2, vs. IU Kokomo, 11/6/2018.....	Blocks.....	2, vs. IU Kokomo, 11/6/2018
3, vs. Eastern Michigan, 12/8/2018.....	FG Made.....	3, vs. Eastern Michigan, 12/8/2018
4, vs. Eastern Michigan, 12/8/2018.....	FG Attempts.....	4, vs. Eastern Michigan, 12/8/2018
.....	3-PT Made.....
1, at Milwaukee, 12/1/2018.....	3-PT Attempts.....	1, at Milwaukee, 12/1/2018
1, vs. Taylor, 11/12/2018.....	FT Made.....	1, vs. Taylor, 11/12/2018
2, vs. Taylor, 11/12/2018.....	FT Attempts.....	2, vs. Taylor, 11/12/2018

ABOUT BYRON CENTER, MICHIGAN

- Population of 5,822
- Located about 14 miles south-southwest of Grand Rapids.

ABOUT BYRON CENTER HIGH SCHOOL

- Nickname is the Bulldogs

SEASON STATS

Opponent	Date	gs	min	Total		3-Pointers		Free throws		Rebounds				pf	a	t/o	blk	stl	pts	avg
				fg-fga	pct	3fg-fga	pct	ft-fa	pct	off	def	tot	avg							
IU KOKOMO	11/06/18	17		1-1	1.000	0-0	.000	0-0	.000	2	5	7	7.0	0	0	2	2	0	2	2.0
at Western Michigan	11/08/18	2		0-0	.000	0-0	.000	0-0	.000	0	1	1	4.0	1	1	1	0	0	0	1.0
TAYLOR (IN)	11/12/18	2		0-0	.000	0-0	.000	1-2	.500	1	1	2	3.3	2	0	0	0	0	1	1.0
at Eastern Illinois	11/15/18	1		0-0	.000	0-0	.000	0-0	.000	0	0	0	2.5	1	0	1	0	0	0	0.8
at Purdue	11/18/18	7		0-1	.000	0-0	.000	0-0	.000	0	0	0	2.0	0	0	0	0	1	0	0.6
at Evansville	11/20/18	1		0-0	.000	0-0	.000	0-0	.000	0	0	0	1.7	0	0	0	0	0	0	0.5
SIUE	11/24/18	dnf		-	-	-	-	-	-	-	-	-	-	-	-	-	-	-	-	-
at Loyola-Chicago	11/29/18	11		1-3	.333	0-0	.000	0-0	.000	0	0	0	1.4	1	0	0	0	0	2	0.7
at Milwaukee	12/01/18	*	5	0-1	.000	0-1	.000	0-0	.000	0	0	0	1.3	1	0	0	0	0	0	0.6
EASTERN MICHIGAN	12/08/18	10		3-4	.750	0-0	.000	0-0	.000	0	1	1	1.2	0	0	0	0	0	6	1.2
GOSHEN	12/16/18	19		2-2	1.000	0-0	.000	0-0	.000	1	1	2	1.3	4	0	0	1	1	4	1.5
VALPARAISO	12/19/18	2		1-1	1.000	0-0	.000	0-0	.000	0	0	0	1.2	2	0	0	0	0	2	1.5
at North Dakota State	12/28/18	6		1-3	.333	0-1	.000	0-0	.000	1	0	1	1.2	0	0	1	0	0	2	1.6
at North Dakota	12/30/18	6		0-0	.000	0-0	.000	0-0	.000	0	0	0	1.1	1	0	0	0	0	0	1.5
Totals		1	89	9-16	.563	0-2	.000	1-2	.500	5	9	14	1.1	13	1	5	3	2	19	1.5

Games played: 13
 Minutes/game: 6.8
 Points/game: 1.5
 FG Pct: 56.3
 3FG Pct: 0.0
 FT Pct: 50.0

Rebounds/game: 1.1
 Assists/game: 0.1
 Turnovers/game: 0.4
 Assist/turnover ratio: 0.2
 Steals/game: 0.2
 Blocks/game: 0.2

CAREER STATS

			Total		3-Point		F-Throws		Rebounds											Scoring	
Season	gp-gs	min/avg	fg-fga	pct	fg-fga	pct	ft-fa	pct	off	def	tot	avg	pf	fo	ast	to	blk	stl	pts	avg	
2018-19	13-1	89/6.8	9-16	.563	0-2	.000	1-2	.500	5	9	14	1.1	13	0	1	5	3	2	19	1.5	
TOTAL	13-1	89/6.8	9-16	.563	0-2	.000	1-2	.500	5	9	14	1.1	13	0	1	5	3	2	19	1.5	



5

HANNAH
HESS

R-Sophomore | 5-10
Oregon, Ohio
Clay

GUARD

SEASON HIGH	CATEGORY	CAREER HIGH
37, vs. Taylor, 11/12/2018.....	Minutes.....	37, vs. Taylor, 11/12/2018
16, vs. Taylor, 11/12/2018.....	Points.....	16, vs. Taylor, 11/12/2018
7, two times.....	Rebounds.....	7, two times
7, at Eastern Illinois, 11/15/2018.....	Assists.....	7, at Eastern Illinois, 11/15/2018
3, vs. Taylor, 11/12/2018.....	Steals.....	3, vs. Taylor, 11/12/2018
1, two times.....	Blocks.....	1, three times
6, vs. Taylor, 11/12/2018.....	FG Made.....	6, vs. Taylor, 11/12/2018
11, vs. Taylor, 11/12/2018.....	FG Attempts.....	14, vs. Western Illinois, 12/30/2017
4, vs. Taylor, 11/12/2018.....	3-PT Made.....	4, vs. Taylor, 11/12/2018
8, vs. Taylor, 11/12/2018.....	3-PT Attempts.....	10, vs. Western Illinois, 12/30/2017
3, vs. Eastern Michigan, 12/8/2018.....	FT Made.....	3, two time
3, vs. Eastern Michigan, 12/8/2018.....	FT Attempts.....	3, two times

CAREER NOTES

- Missed the 2016-17 season due to injury, used a reshirt season
- Majoring in Biology

PRIOR TO FORT WAYNE

- Named to the 2015-16 Division I All-Ohio First Team
- Averaged 16.0 points and 4.0 rebounds per game as a senior
- Was a two-time First Team All-Three Rivers Athletic Conference and First Team All-District selection
- Named the District 7 Player of the Year in her final season at Clay

ABOUT OREGON, OHIO

- Population of 20,291 | Motto: "A City of Opportunity"
- Is part of the industrial suburb of Toledo, Ohio
- Home to the Sundance Drive-In, one of the last in the region

ABOUT CLAY HIGH SCHOOL

- Nickname is the Bulldogs
- Notable alumni include NFL Offensive Guard for the Indianapolis Colts Eric Herman, and MLB player A.J. Achter and Chinese Professional Baseball League Jutsin Thomas

CAREER VS. SOUTH DAKOTA STATE

Season	gp-gs	min/avg	Total		3-Point		F-Throws			Rebounds				Scoring							
			fg-fga	pct	fg-fga	pct	ft-fa	pct		off	def	tot	avg	pf	fo	ast	to	blk	stl	pts	avg
2017-18	2-0	40/20.0	4-9	.444	2-5	.400	0-0	.000		0	7	7	3.5	1	0	0	1	0	3	10	5.0
TOTAL	2-0	40/20.0	4-9	.444	2-5	.400	0-0	.000		0	7	7	3.5	1	0	0	1	0	3	10	5.0

SINGLE-GAME HIGHS [all-time ranking]:

Points: 6, South Dakota State -- 02/24/18

Rebounds: 5, South Dakota State -- 02/24/18

Steals: 2, at South Dakota State -- 01/27/18

FG made: 2, at South Dakota State -- 01/27/18; South Dakota State -- 02/24/18

FG attempts: 5, South Dakota State -- 02/24/18

3FG made: 2, South Dakota State -- 02/24/18

3FG attempts: 4, South Dakota State -- 02/24/18

SEASON STATS

Opponent	Date	gs	min	Total		3-Pointers		Free throws		Rebounds				pf	a	t/o	blk	stl	pts	avg
				fg-fga	pct	3fg-fga	pct	ft-fa	pct	off	def	tot	avg							
IU KOKOMO	11/06/18		13	1-3	.333	0-1	.000	0-0	.000	0	1	1	1.0	3	1	1	0	1	2	2.0
at Western Michigan	11/08/18		22	4-7	.571	1-2	.500	0-0	.000	0	2	2	1.5	1	0	0	0	1	9	5.5
TAYLOR (IN)	11/12/18		37	6-11	.545	4-8	.500	0-0	.000	1	6	7	3.3	2	3	3	1	3	16	9.0
at Eastern Illinois	11/15/18		31	3-6	.500	2-5	.400	0-0	.000	0	2	2	3.0	2	7	2	1	0	8	8.8
at Purdue	11/18/18	*	25	3-8	.375	3-7	.429	0-0	.000	0	1	1	2.6	2	2	2	0	2	9	8.8
at Evansville	11/20/18		13	1-2	.500	0-1	.000	0-0	.000	0	3	3	2.7	0	1	0	0	1	2	7.7
SIUE	11/24/18		14	1-5	.200	1-3	.333	0-0	.000	0	3	3	2.7	2	0	2	0	0	3	7.0
at Loyola-Chicago	11/29/18	*	25	1-4	.250	1-4	.250	0-0	.000	0	1	1	2.5	2	2	1	0	0	3	6.5
at Milwaukee	12/01/18	*	29	1-5	.200	1-3	.333	2-2	1.000	1	6	7	3.0	4	2	1	0	0	5	6.3
EASTERN MICHIGAN	12/08/18		29	4-6	.667	0-1	.000	3-3	1.000	0	4	4	3.1	1	1	2	0	1	11	6.8
GOSHEN	12/16/18		16	4-7	.571	1-3	.333	0-0	.000	0	2	2	3.0	2	0	1	0	2	9	7.0
VALPARAISO	12/19/18		17	0-4	.000	0-3	.000	1-2	.500	0	2	2	2.9	3	1	2	0	0	1	6.5
at North Dakota State	12/28/18		24	2-6	.333	0-3	.000	0-0	.000	1	1	2	2.8	2	1	1	0	0	4	6.3
at North Dakota	12/30/18		13	0-3	.000	0-2	.000	2-2	1.000	0	2	2	2.8	0	2	3	0	1	2	6.0
Totals		3	308	31-77	.403	14-46	.304	8-9	.889	3	36	39	2.8	26	23	21	2	12	84	6.0

Games played: 14
Minutes/game: 22.0
Points/game: 6.0
FG Pct: 40.3
3FG Pct: 30.4
FT Pct: 88.9

Rebounds/game: 2.8
Assists/game: 1.6
Turnovers/game: 1.5
Assist/turnover ratio: 1.1
Steals/game: 0.9
Blocks/game: 0.1

CAREER STATS

Season	gp-gs	min/avg	Total		3-Point		F-Throws		Rebounds				Scoring							
			fg-fga	pct	fg-fga	pct	ft-fa	pct	off	def	tot	avg	pf	fo	ast	to	blk	stl	pts	avg
2017-18	27-2	364/13.5	34-113	.301	21-78	.269	8-9	.889	5	28	33	1.2	18	0	15	25	2	10	97	3.6
2018-19	14-3	308/22.0	31-77	.403	14-46	.304	8-9	.889	3	36	39	2.8	26	0	23	21	2	12	84	6.0
TOTAL	41-5	672/16.4	65-190	.342	35-124	.282	16-18	.889	8	64	72	1.8	44	0	38	46	4	22	181	4.4



10

HANNAH

ALBRECHT

Junior | 5-7

Crown Point, Ind.

Crown Point

Saint Joseph's (IN)

GUARD

CAREER NOTES

- Transferred in for the 2017-18 season
- Majoring in Marketing
- Brothers Spike played at Michigan and Purdue, and Stephen played at Toledo and Brown; father Chuck played at Vincennes and Purdue Calumet; grandfather Charles played briefly at Indiana.

PRIOR TO FORT WAYNE

- Played one season at Saint Joseph's (IN) before it closed in May of 2017
- Named Third Team All-Great Lakes Valley Conference (GLVC)
- Named to the GLVC All-Freshman Team

CAREER VS. SOUTH DAKOTA STATE

			Total		3-Point		F-Throws			Rebounds											Scoring	
Season	gp-gs	min/avg	fg-fga	pct	fg-fga	pct	ft-fga	pct	off	def	tot	avg	pf	fo	ast	to	blk	stl	pts	avg		
2017-18	2-2	54/27.0	3-17	.176	2-4	.500	3-4	.750	1	5	6	3.0	1	0	3	1	0	0	11	5.5		
TOTAL	2-2	54/27.0	3-17	.176	2-4	.500	3-4	.750	1	5	6	3.0	1	0	3	1	0	0	11	5.5		

SINGLE-GAME HIGHS [all-time ranking]:

Points: 7, South Dakota State -- 02/24/18

Rebounds: 4, South Dakota State -- 02/24/18

Assists: 2, South Dakota State -- 02/24/18

FG made: 2, South Dakota State -- 02/24/18

FG attempts: 10, South Dakota State -- 02/24/18

3FG made: 1, at South Dakota State -- 01/27/18; South Dakota State -- 02/24/18

3FG attempts: 3, at South Dakota State -- 01/27/18

FT made: 2, South Dakota State -- 02/24/18

FT attempts: 2, at South Dakota State -- 01/27/18; South Dakota State -- 02/24/18

SEASON STATS

Opponent	Date	gs	min	Total		3-Pointers		Free throws		Rebounds				pf	a	t/o	blk	stl	pts	avg
				fg-fga	pct	3fg-fga	pct	ft-fga	pct	off	def	tot	avg							
IU KOKOMO	11/06/18	*	28	3-5	.600	0-1	.000	0-0	.000	0	1	1	1.0	1	2	2	0	1	6	6.0
at Western Michigan	11/08/18	*	17	0-0	.000	0-0	.000	0-0	.000	0	1	1	1.0	2	1	1	0	2	0	3.0
TAYLOR (IN)	11/12/18	*	35	6-10	.600	2-3	.667	0-0	.000	0	1	1	1.0	1	1	3	0	0	14	6.7
at Eastern Illinois	11/15/18	*	29	2-8	.250	1-3	.333	1-2	.500	0	2	2	1.3	1	1	4	0	0	6	6.5
at Purdue	11/18/18	*	22	4-9	.444	2-4	.500	2-2	1.000	0	1	1	1.2	2	0	3	0	0	12	7.6
at Evansville	11/20/18	*	31	2-7	.286	0-1	.000	1-1	1.000	2	4	6	2.0	3	3	0	0	0	5	7.2
SIUE	11/24/18	*	36	3-8	.375	0-3	.000	1-2	.500	0	1	1	1.9	2	2	1	0	0	7	7.1
at Loyola-Chicago	11/29/18	*	40	6-13	.462	3-4	.750	0-0	.000	0	2	2	1.9	1	2	2	0	1	15	8.1
at Milwaukee	12/01/18	*	39	3-15	.200	1-6	.167	2-2	1.000	0	4	4	2.1	1	2	3	0	0	9	8.2
EASTERN MICHIGAN	12/08/18	*	17	0-2	.000	0-1	.000	0-0	.000	0	0	0	1.9	5	2	3	0	0	0	7.4
GOSHEN	12/16/18	*	27	5-10	.500	1-3	.333	0-0	.000	2	0	2	1.9	2	1	1	0	1	11	7.7
VALPARAISO	12/19/18	*	35	3-8	.375	0-2	.000	0-0	.000	1	2	3	2.0	0	5	1	0	1	6	7.6
at North Dakota State	12/28/18	*	23	2-6	.333	2-2	1.000	0-0	.000	0	4	4	2.2	4	1	1	0	0	6	7.5
at North Dakota	12/30/18	*	31	2-9	.222	1-3	.333	4-4	1.000	1	0	1	2.1	4	2	1	0	0	9	7.6
Totals		13	410	41-110	.373	13-36	.361	11-13	.846	6	23	29	2.1	29	25	26	0	6	106	7.6

Games played: 14
Minutes/game: 29.3
Points/game: 7.6
FG Pct: 37.3
3FG Pct: 36.1
FT Pct: 84.6

Rebounds/game: 2.1
Assists/game: 1.8
Turnovers/game: 1.9
Assist/turnover ratio: 1.0
Steals/game: 0.4

SEASON HIGH	CATEGORY	CAREER HIGH
40, at Loyola-Chicago, 11/29/2018	Minutes	43, vs. William Jewell, 2/11/2017 *
15, at Loyola-Chicago, 11/29/2018	Points	23, at Maryville, 1/5/2017 *
6, at Evansville, 11/20/2018	Rebounds	7, two times *
5, vs. Valparaiso, 12/19/2018	Assists	8, vs. Bellarmine, 1/28/2017 *
2, at Western Michigan, 11/8/2018	Steals	3, six times *
—	Blocks	2, at Truman State, 2/4/2017 *
6, two times	FG Made	10, vs. Bellarmine, 1/28/2017 *
15, at Milwaukee, 12/1/2018	FG Attempts	16, vs. Bellarmine, 1/28/2017 *
3, at Loyola-Chicago, 11/29/2018	3-PT Made	3, six times *
6, at Milwaukee, 12/1/2018	3-PT Attempts	7, four times *
4, at North Dakota, 12/30/2018	FT Made	7, vs. Denver, 1/6/2018
4, at North Dakota, 12/30/2018	FT Attempts	7, vs. Denver, 1/6/2018

* = Includes while at Saint Joseph's

ABOUT CROWN POINT, INDIANA

- Population of 27,317 | Incorporated 1868 | Nickname: Hub of Lake County
- Some of the more well known residents and former residents of Crown Point include World War I General William G. Hann and billionaire entrepreneur Dean White
- Used as a set location to film for the movie Public Enemies

ABOUT CROWN POINT HIGH SCHOOL

- Nickname is the Bulldogs
- Notable alumni include Indiana Supreme Court justice Geoffrey G. Slaughter, astronaut Jerry L. Ross, and former professional baseball player and now analyst on the MLB network Dan Plesac

CAREER STATS

		Total				3-Point		F-Throws		Rebounds				Scoring							
Season	gp-gs	min/avg	fg-fga	pct	fg-fga	pct	ft-fga	pct	off	def	tot	avg	pts	pts	avg	pf	fo	ast	to	blk	stl
2016-17*	29-26	301/10.4	95-225	.422	31-92	.337	48-55	.873	10	64	74	2.6	48	1	48	47	5	29	269	9.3	
2017-18	27-26	835/30.9	67-172	.390	23-55	.418	39-47	.830	6	72	78	2.9	47	0	53	56	5	20	196	7.3	
2018-19	14-13	410/29.3	41-110	.373	13-36	.361	11-13	.846	6	23	29	2.1	29	1	25	26	0	6	106	7.6	
TOTAL	41-39	1245/30.4	108-282	.383	36-91	.396	50-60	.833	12	95	107	2.6	76	1	78	82	5	26	302	7.4	
All*	70-65	1546/22.1	203-507	.400	67-183	.366	98-115	.852	22	159	181	2.6	124	2	126	129	10	55	571	8.2	

* include statistics from Saint Joseph's



12

ANNA LAPPENKÜPER

Junior | 5-9
 Herne, Germany
 Otto Hahn Gymnasium

GUARD

CAREER NOTES

- 2016-17 Summit League Academic Honor Roll
- Majoring in Management

PRIOR TO FORT WAYNE

- Member of the U20 German National team that won the 2017 FIBA U20 Women's European Championship, Division B title
- Team captain of the German U16 team that won gold in Division B at the 2014 FIBA Women's European Championship

CAREER VS. SOUTH DAKOTA STATE

Season	gp-gs	min/avg	Total		3-Point		F-Throws		Rebounds				Other Stats							Scoring	
			fg-fga	pct	fg-fga	pct	ft-fa	pct	off	def	tot	avg	pf	fo	ast	to	blk	stl	pts	avg	
2016-17	2-2	58/29.0	7-21	.333	4-15	.267	0-0	.000	0	5	5	2.5	6	0	1	4	0	2	18	9.0	
2017-18	2-2	46/23.0	1-6	.167	1-3	.333	0-0	.000	1	3	4	2.0	2	0	1	3	0	0	3	1.5	
TOTAL	4-4	104/26.0	8-27	.296	5-18	.278	0-0	.000	1	8	9	2.3	8	0	2	7	0	2	21	5.3	

SINGLE-GAME HIGHS (all-time ranking):

Points: 12, at South Dakota State -- 01/05/17

Rebounds: 4, at South Dakota State -- 01/05/17

Assists: 1, at South Dakota State -- 01/27/18; South Dakota State -- 02/18/17

Steals: 2, at South Dakota State -- 01/05/17

FG made: 5, at South Dakota State -- 01/05/17

FG attempts: 15, at South Dakota State -- 01/05/17

3FG made: 2, at South Dakota State -- 01/05/17; South Dakota State -- 02/18/17

3FG attempts: 10, at South Dakota State -- 01/05/17

SEASON STATS

Opponent	Date	gs	min	Total		3-Pointers		Free throws		Rebounds				pf	a	t/o	blk	stl	pts	avg	
				fg-fga	pct	3fg-fga	pct	ft-fa	pct	off	def	tot	avg								
IU KOKOMO	11/06/18	*	30	1-4	.250	0-2	.000	0-0	.000	0	5	5	5.0	2	6	2	0	2	2	2.0	
at Western Michigan	11/08/18	*	40	1-5	.200	1-2	.500	0-0	.000	2	1	3	4.0	2	4	4	0	2	3	2.5	
TAYLOR (IN)	11/12/18	*	29	4-9	.444	1-3	.333	0-0	.000	1	2	3	3.7	0	4	4	0	2	9	4.7	
at Eastern Illinois	11/15/18	*	24	1-3	.333	0-0	.000	0-0	.000	2	2	4	3.8	0	2	5	1	0	2	4.0	
at Purdue	11/18/18	*	32	3-8	.375	1-4	.250	0-2	.000	1	1	2	3.4	3	2	2	0	1	7	4.6	
at Evansville	11/20/18	*	35	3-5	.600	0-1	.000	4-4	1.000	0	4	4	3.5	2	4	3	2	1	10	5.5	
SIUE	11/24/18	*	28	2-3	.667	1-2	.500	0-0	.000	2	4	6	3.9	1	0	3	0	1	5	5.4	
at Loyola-Chicago	11/29/18	*	29	3-10	.300	3-6	.500	0-0	.000	0	2	2	3.6	3	4	2	1	0	9	5.9	
at Milwaukee	12/01/18	*	25	1-5	.200	1-2	.500	1-2	.500	2	1	3	3.6	2	1	1	0	1	4	5.7	
EASTERN MICHIGAN	12/08/18	*	34	2-9	.222	1-5	.200	0-0	.000	1	1	2	3.4	3	2	1	0	3	5	5.6	
GOSHEN	12/16/18	*	31	1-4	.250	1-4	.250	0-0	.000	2	0	2	3.3	2	7	1	0	2	3	5.4	
VALPARAISO	12/19/18	*	38	5-11	.455	2-4	.500	0-0	.000	1	1	2	3.2	2	4	4	0	3	12	5.9	
at North Dakota State	12/28/18	*	31	2-5	.400	0-1	.000	0-0	.000	0	1	1	3.0	5	5	1	1	3	4	5.8	
at North Dakota	12/30/18	*	36	3-4	.750	1-1	1.000	1-1	1.000	1	3	4	3.1	4	2	4	0	4	8	5.9	
Totals			14	442	32-85	.376	13-37	.351	6-9	.667	15	28	43	3.1	31	47	37	5	25	83	5.9

Games played: 14
Minutes/game: 31.6
Points/game: 5.9
FG Pct: 37.6
3FG Pct: 35.1
FT Pct: 66.7

Rebounds/game: 3.1
Assists/game: 3.4
Turnovers/game: 2.6
Assist/turnover ratio: 1.3
Steals/game: 1.8
Blocks/game: 0.4

CAREER STATS

Season	gp-gs	min/avg	Total		pct	3-Point		pct	F-Throws		pct	Rebounds				pf	fo	ast	to	blk	stl	Scoring	
			fg-fga			fg-fga			ft-fa			off	def	tot	avg							pts	avg
2016-17	29-24	888/30.6	75-206		.364	19-79		.241	24-34		.706	10	64	74	2.6	62	2	46	84	2	26	193	6.7
2017-18	27-27	783/29.0	68-188		.362	18-61		.295	39-47		.830	26	36	62	2.3	66	0	54	58	2	16	193	7.1
2018-19	14-14	442/31.6	32-85		.376	13-37		.351	6-9		.667	15	28	43	3.1	31	1	47	37	5	25	83	5.9
TOTAL	70-65	2113/30.2	175-479		.365	50-177		.282	69-90		.767	51	128	179	2.6	159	3	147	179	9	67	469	6.7

17 2018-19 PURDUE FORT WAYNE WOMEN'S BASKETBALL GAME NOTES



@MastodonWBB

SEASON HIGH	CATEGORY	CAREER HIGH
40, at Western Michigan, 11/8/2018.....	Minutes.....	40, three times
12, vs. Valparaiso, 12/19/2018.....	Points.....	19, at Xavier, 11/29/2017
5, vs. IU Kokomo, 11/6/2018.....	Rebounds.....	6, at Illinois, 11/10/2017
7, vs. Goshen, 12/16/2018.....	Assists.....	7, two times
4, at North Dakota, 12/30/2018.....	Steals.....	4, at North Dakota, 12/30/2018
2, at Evansville, 11/20/2018.....	Blocks.....	2, at Evansville, 11/20/2018
5, vs. Valparaiso, 12/19/2018.....	FG Made.....	7, at Xavier, 11/29/2017
11, vs. Valparaiso, 12/19/2018.....	FG Attempts...15, at South Dakota State, 1/5/2017	
3, at Loyola-Chicago, 11/29/2018.....	3-PT Made.....	3, four times
6, at Loyola-Chicago, 11/29/2018.....	3-PT Attempts...10, at South Dakota State, 1/5/2017	
4, at Evansville, 11/20/2018.....	FT Made.....	8, vs. Loyola-Chicago, 11/12/2017
4, at Evansville, 11/20/2018.....	FT Attempts.....	9, vs. Loyola-Chicago, 11/12/2017

ABOUT HERNE, GERMANY

- Home to the Cranger Kirmes funfair every first week of August. The second largest carnival in Germany with an average of around 4,500,000 visitors. Its origins can be traced back to the 15th century

ABOUT GERMANY

- Population: 82,175,700, 16th largest in the world | Official language is German
- East Germany and West Germany reunified on October 3, 1990
- Is the largest music market in Europe and home to German-born music composers Johann Sebastian Bach and Ludwig van Beethoven
- Known as a leading automobile haven of the world include Mercedes-Benz, BMW, Volkswagen, Audi and Porsche



De'JOUR
YOUNG

13

Senior | 5-7

Fort Wayne, Ind.

Concordia Lutheran

GUARD

CAREER NOTES

- Majoring in Criminal Justice

PRIOR TO FORT WAYNE

- Led Concordia to the Summit Athletic Conference tournament title in 2015
- Averaged 18.5 points, 7.1 rebounds, 2.6 assists, and 1.5 steals per game
- Was a 2015 First Team All-SAC
- Was a 2015 All-Northeast Indiana First Team honoree

CAREER VS. SOUTH DAKOTA STATE

Season	gp-gs	min/avg	Total		3-Point		F-Throws		Rebounds				Scoring							
			fg-fga	pct	fg-fga	pct	ft-fga	pct	off	def	tot	avg	pf	fo	ast	to	blk	stl	pts	avg
2015-16	3-3	66/22.0	5-13	.385	1-3	.333	4-6	.667	3	7	10	3.3	7	0	1	3	1	1	15	5.0
2016-17	2-2	54/27.0	6-14	.429	0-2	.000	3-4	.750	0	9	9	4.5	9	1	5	5	0	3	15	7.5
2017-18	1-1	29/29.0	2-7	.286	1-3	.333	0-0	.000	3	1	4	4.0	2	0	2	2	1	1	5	5.0
TOTAL	6-6	149/24.8	13-34	.382	2-8	.250	7-10	.700	6	17	23	3.8	18	1	8	10	2	5	35	5.8

SINGLE-GAME HIGHS [all-time ranking]:

Points: 9, South Dakota State -- 01/13/16; South Dakota State -- 02/18/17

Rebounds: 6, at South Dakota State -- 01/05/17; vs South Dakota State -- 03/05/16

Assists: 5, at South Dakota State -- 01/05/17

Steals: 2, at South Dakota State -- 01/05/17

Blocks: 1, at South Dakota State -- 01/27/18; vs South Dakota State -- 03/05/16

FG made: 3, at South Dakota State -- 01/05/17; South Dakota State -- 02/18/17

FG attempts: 9, at South Dakota State -- 01/05/17

3FG made: 1, South Dakota State -- 01/13/16; at South Dakota State -- 01/27/18

3FG attempts: 3, at South Dakota State -- 01/27/18

FT made: 4, South Dakota State -- 01/13/16

FT attempts: 4, South Dakota State -- 01/13/16; South Dakota State -- 02/18/17

SEASON STATS

Opponent	Date	gs	min	Total		3-Pointers		Free throws		Rebounds				pf	a	t/o	blk	stl	pts	avg	
				fg-fga	pct	3fg-fga	pct	ft-fga	pct	off	def	tot	avg								
IU KOKOMO	11/06/18	*	24	7-10	.700	1-2	.500	7-10	.700	3	1	4	4.0	3	1	1	2	1	22	22.0	
at Western Michigan	11/08/18	*	31	6-10	.600	2-2	1.000	0-4	.000	2	5	7	5.5	5	1	6	0	1	14	18.0	
TAYLOR (IN)	11/12/18	*	31	6-11	.545	1-2	.500	7-8	.875	4	4	8	6.3	2	2	1	1	2	20	18.7	
at Eastern Illinois	11/15/18	*	31	2-8	.250	1-3	.333	2-2	1.000	2	7	9	7.0	2	1	5	0	0	7	15.8	
at Purdue	11/18/18	*	32	1-7	.143	0-1	.000	2-2	1.000	3	2	5	6.6	3	4	0	0	2	4	13.4	
at Evansville	11/20/18	*	39	7-13	.538	2-6	.333	3-4	.750	1	6	7	6.7	3	1	2	1	4	19	14.3	
SIUE	11/24/18	*	36	1-11	.091	0-2	.000	2-4	.500	1	5	6	6.6	2	2	4	0	2	4	12.9	
at Loyola-Chicago	11/29/18	*	40	6-11	.545	3-6	.500	3-5	.600	1	2	3	6.1	1	3	1	0	1	18	13.5	
at Milwaukee	12/01/18	*	37	2-10	.200	2-7	.286	4-6	.667	2	1	3	5.8	1	0	1	1	1	10	13.1	
EASTERN MICHIGAN	12/08/18	*	40	2-6	.333	0-2	.000	8-9	.889	3	4	7	5.9	3	2	6	0	3	12	13.0	
GOSHEN	12/16/18	*	26	8-10	.800	0-1	.000	3-3	1.000	3	5	8	6.1	1	4	3	2	3	19	13.5	
VALPARAISO	12/19/18	*	35	4-11	.364	1-5	.200	4-7	.571	4	10	14	6.8	4	2	5	0	0	13	13.5	
at North Dakota State	12/28/18	*	32	8-17	.471	1-1	1.000	2-2	1.000	4	2	6	6.7	3	2	2	1	0	19	13.9	
at North Dakota	12/30/18	*	36	3-12	.250	1-3	.333	3-4	.750	0	5	5	6.6	4	3	4	0	1	10	13.6	
Totals			14	470	63-147	.429	15-43	.349	50-70	.714	33	59	92	6.6	37	28	41	8	21	191	13.6

Games played: 14
Minutes/game: 33.6
Points/game: 13.6
FG Pct: 42.9
3FG Pct: 34.9
FT Pct: 71.4

Rebounds/game: 6.6
Assists/game: 2.0
Turnovers/game: 2.9
Assist/turnover ratio: 0.7
Steals/game: 1.5
Blocks/game: 0.6

CAREER STATS

Season			Total		3-Point		F-Throws		Rebounds									Scoring		
	gp-gs	min/avg	fg-fga	pct	fg-fga	pct	ft-fga	pct	off	def	tot	avg	pf	fo	ast	to	blk	stl	pts	avg
2015-16	30-21	688/22.9	72-176	.409	8-19	.421	51-72	.708	55	52	107	3.6	69	1	34	34	8	33	203	6.8
2016-17	29-29	910/31.4	134-327	.410	12-62	.194	74-87	.851	56	101	157	5.4	77	2	59	68	6	27	354	12.2
2017-18	26-24	848/32.6	101-280	.361	14-65	.215	72-101	.713	64	93	157	6.0	53	0	45	74	16	34	288	11.1
2018-19	14-14	470/33.6	63-147	.429	15-43	.349	50-70	.714	33	59	92	6.6	37	1	28	41	8	21	191	13.6

@MastodonWBB



2018-19 PURDUE FORT WAYNE WOMEN'S BASKETBALL GAME NOTES 18

SEASON HIGH	CATEGORY	CAREER HIGH
40, at Loyola-Chicago, 11/29/2018	Minutes	40, three times
22, vs. IU Kokomo, 11/6/2018	Points	23, vs. Eastern Illinois, 12/8/2017
14, vs. Valparaiso, 12/19/2018	Rebounds	14, vs. Valparaiso, 12/19/2018
4, two times	Assists	5, three times
4, at Evansville, 11/20/2018	Steals	5, vs. Grace, 11/16/2015
2, two times	Blocks	3, vs. Denver, 1/6/2018
8, two times	FG Made	9, vs. Eastern Illinois, 12/8/2017
17, at North Dakota, 12/30/2018	FG Attempts	19, vs. Maryville, 12/19/2017
3, at Loyola-Chicago, 11/29/2018	3-PT Made	3, two times
7, at Milwaukee, 12/1/2018	3-PT Attempts	8, vs. Maryville, 12/19/2017
8, vs. Eastern Michigan, 12/8/2018	FT Made	8, two times
10, vs. IU Kokomo, 11/6/2018	FT Attempts	10, three times

ABOUT FORT WAYNE, INDIANA

- Incorporated on February 22, 1840, and is the second largest city in the state. The nickname, The Summit City, is due to its location at the zenith of the locks on the canal
- Also home to the ECHL's Fort Wayne Komets, the Midwest League's Fort Wayne TinCaps, and the NBA G League's Fort Wayne Mad Ants
- Original home to the Fort Wayne Pistons, before moving to Detroit. Was also home to the Fort Wayne Daisies of the All-American Girls Professional Baseball League

ABOUT CONCORDIA LUTHERAN HIGH SCHOOL

- Nickname is the Cadets
- Notable alumni include leading NFL agent Eugene Parker, sixth round MLB draft pick Brian Reith, and Professional mixed martial artist and former UFC fighter Dave Herman



14

Sh'TOYA SANDERS

R-Junior | 6-0
Fort Wayne, Ind.
Wayne
Chicago State

FOWARD

CAREER NOTES

- Sat out the 2017-18 season due to transfer rules
- Majoring in Criminal Justice

PRIOR TO FORT WAYNE

- Played two seasons at Chicago State (2015-16 and 2016-17)
- Named the Western Athletic Conference Player of the Week on 11/28/2016
- Had 23 rebounds at Northern Illinois on 11/22/2016, which were fifth most by a Division I player that season

SEASON HIGH	CATEGORY	CAREER HIGH
27, at North Dakota State, 12/28/2018	Minutes	38, four times *
13, two times	Points	38, at Northern Illinois, 11/22/2016 *
11, at Western Michigan, 11/8/2018	Rebounds	23, at Northern Illinois, 11/22/2016 *
2, two times	Assists	3, three times *
2, four times	Steals	5, three times *
3, vs. IU Kokomo, 11/6/2018	Blocks	6, two times *
6, two times	FG Made	11, at Northern Illinois, 11/22/2016 *
16, at Evansville, 11/20/2018	FG Attempts	22, at Northern Illinois, 11/22/2016 *
—	3-PT Made	1, two times *
—	3-PT Attempts	3, at Ball State, 12/1/2016 *
4, two times	FT Made	15, at Northern Illinois, 11/22/2016 *
6, two times	FT Attempts	19, at Northern Illinois, 11/22/2016 *

* = While at Chicago State

ABOUT FORT WAYNE, INDIANA

- Incorporated on February 22, 1840, and is the second largest city in the state. The nickname, The Summit City, is due to its location at the zenith of the locks on the canal
- Also home to the ECHL's Fort Wayne Komets, the Midwest League's Fort Wayne TinCaps, and the NBA G League's Fort Wayne Mad Ants
- Original home to the Fort Wayne Pistons, before moving to Detroit. Was also home to the Fort Wayne Daisies of the All-American Girls Professional Baseball League

ABOUT WAYNE HIGH SCHOOL

- Nickname is the Generals
- Notable alumni include founder of Sweetwater Sound Chuck Surack, actress Molly Hagen, and former Detroit Lion Roosevelt Barnes

SEASON STATS

Opponent	Date	gs	min	Total		3-Pointers		Free throws		Rebounds				pf	a	t/o	blk	stl	pts	avg
				fg-fga	pct	3fg-fga	pct	ft-flt	pct	off	def	tot	avg							
IU KOKOMO	11/06/18	*	17	6-8	.750	0-0	.000	1-3	.333	0	4	4	4.0	3	0	2	3	1	13	13.0
at Western Michigan	11/08/18	*	24	4-11	.364	0-0	.000	1-2	.500	5	6	11	7.5	4	0	0	0	0	9	11.0
TAYLOR (IN)	11/12/18	*	15	0-2	.000	0-0	.000	1-1	1.000	2	1	3	6.0	4	0	1	1	2	1	7.7
at Eastern Illinois	11/15/18	*	23	3-5	.600	0-0	.000	2-2	1.000	2	2	4	5.5	3	2	2	0	0	8	7.8
at Purdue	11/18/18	*	21	1-7	.143	0-0	.000	0-0	.000	3	2	5	5.4	3	0	2	0	2	2	6.6
at Evansville	11/20/18	*	23	6-16	.375	0-0	.000	1-3	.333	6	2	8	5.8	1	1	2	2	2	13	7.7
SIUE	11/24/18	*	25	4-8	.500	0-0	.000	4-5	.800	1	6	7	6.0	4	0	3	2	1	12	8.3
at Loyola-Chicago	11/29/18		19	3-3	1.000	0-0	.000	0-0	.000	2	3	5	5.9	3	2	1	1	2	6	8.0
at Milwaukee	12/01/18	dnp	-	-	-	-	-	-	-	-	-	-	-	-	-	-	-	-	-	-
EASTERN MICHIGAN	12/08/18	dnp	-	-	-	-	-	-	-	-	-	-	-	-	-	-	-	-	-	-
GOSHEN	12/16/18	dnp	-	-	-	-	-	-	-	-	-	-	-	-	-	-	-	-	-	-
VALPARAISO	12/19/18		10	1-3	.333	0-0	.000	0-2	.000	0	3	3	5.6	2	0	0	2	1	2	7.3
at North Dakota State	12/28/18		27	4-8	.500	0-0	.000	1-6	.167	3	6	9	5.9	3	0	3	1	2	9	7.5
at North Dakota	12/30/18	*	26	4-7	.571	0-0	.000	4-6	.667	3	5	8	6.1	1	0	3	0	0	12	7.9
Totals		8	230	36-78	.462	0-0	.000	15-30	.500	27	40	67	6.1	31	5	19	12	13	87	7.9

Games played: 11
Minutes/game: 20.9
Points/game: 7.9
FG Pct: 46.2
FT Pct: 50.0

Rebounds/game: 6.1
Assists/game: 0.5
Turnovers/game: 1.7
Assist/turnover ratio: 0.3
Steals/game: 1.2
Blocks/game: 1.1

CAREER STATS

		Total				3-Point		F-Throws			Rebounds				* include statistics from Chicago State							Scoring	
Season	gp-gs	min/avg	fg-fga	pct	fg-fga	pct	ft-fa	pct	off	def	tot	avg	pf	fo	ast	to	blk	stl	pts	avg			
2015-16*	29-28	742/25.6	99-217	.456	0-0	.000	41-74	.554	77	105	182	6.3	93	4	25	70	47	43	239	8.2			
2016-17*	7-7	215/30.7	36-100	.360	2-7	.286	38-56	.679	25	44	69	9.9	26	2	4	14	29	14	112	16.0			
2018-19	11-8	230/20.9	36-78	.462	0-0	.000	15-30	.500	27	40	67	6.1	31	0	5	19	12	13	87	7.9			
TOTAL	11-8	230/20.9	36-78	.462	0-0	.000	15-30	.500	27	40	67	6.1	31	0	5	19	12	13	87	7.9			
All*	47-43	1187/25.3	171-395	.433	2-7	.286	94-160	.588	129	189	318	6.8	150	6	34	103	88	70	438	9.3			

19 2018-19 PURDUE FORT WAYNE WOMEN'S BASKETBALL GAME NOTES



15

CAMARA DOUGLAS

Freshman | 5-11
San Diego, Calif.
Mount Miguel

FORWARD

SEASON HIGH	CATEGORY	CAREER HIGH
6, vs. Goshen, 12/16/2018	Minutes	6, vs. Goshen, 12/16/2018
4, vs. Goshen, 12/16/2018	Points	4, vs. Goshen, 12/16/2018
2, vs. Goshen, 12/16/2018	Rebounds	2, vs. Goshen, 12/16/2018
	Assists	
	Steals	
	Blocks	
1, vs. Goshen, 12/16/2018	FG Made	1, vs. Goshen, 12/16/2018
3, vs. Goshen, 12/16/2018	FG Attempts	3, vs. Goshen, 12/16/2018
	3-PT Made	
	3-PT Attempts	
2, vs. Goshen, 12/16/2018	FT Made	2, vs. Goshen, 12/16/2018
2, vs. Goshen, 12/16/2018	FT Attempts	2, vs. Goshen, 12/16/2018

CAREER NOTES

- Majoring in Computer Engineering Tech

PRIOR TO FORT WAYNE

- Averaged 17.8 points, 9.5 rebounds, 2.5 steals and 1.5 blocks per game
- Named both the Grossmont - Hills League and All-East County Player of the Year
- Named to the All-California Interscholastic First Team her senior year
- Named to the first team's for the All-Grossmont - Hills League, San Diego Hoops Report and All-East County
- Earned First Team honors on both the All-Grossmont - Hills League team and All-East County team her junior year

ABOUT SAN DIEGO, CALIFORNIA

- Population of 1,419,516 | Established 1769
- Eighth-largest city in the United States and second-largest in California
- Home to MLB's San Diego Padres. Former home of the NFL's San Diego Chargers, NBA's San Diego Rockets and San Diego Clippers, and the ABA's San Diego Conquistadors/Sails

ABOUT MOUNT MIGUEL HIGH SCHOOL

- Nickname is the Matadors
- Notable alumni include former Pittsburgh Pirates pitcher Jeff Karstens, NFL offensive tackle Khalif Barnes, Television actor Matt Bradford, NFL saftey Robert Griffith, and NFL defensive lineman Ogemdi Nwagbuo

SEASON STATS

Opponent	Date	gs	min	Total		3-Pointers		Free throws		Rebounds				pf	a	t/o	blk	stl	pts	avg
				fg-fga	pct	3fg-fga	pct	ft-fa	pct	off	def	tot	avg							
IU KOKOMO	11/06/18	dnp	-	-	-	-	-	-	-	-	-	-	-	-	-	-	-	-	-	
at Western Michigan	11/08/18	dnp	-	-	-	-	-	-	-	-	-	-	-	-	-	-	-	-	-	
TAYLOR (IN)	11/12/18	dnp	-	-	-	-	-	-	-	-	-	-	-	-	-	-	-	-	-	
at Eastern Illinois	11/15/18	dnp	-	-	-	-	-	-	-	-	-	-	-	-	-	-	-	-	-	
at Evansville	11/20/18	dnp	-	-	-	-	-	-	-	-	-	-	-	-	-	-	-	-	-	
SIUE	11/24/18	dnp	-	-	-	-	-	-	-	-	-	-	-	-	-	-	-	-	-	
at Loyola-Chicago	11/29/18	dnp	-	-	-	-	-	-	-	-	-	-	-	-	-	-	-	-	-	
at Milwaukee	12/01/18	dnp	-	-	-	-	-	-	-	-	-	-	-	-	-	-	-	-	-	
EASTERN MICHIGAN	12/08/18	dnp	-	-	-	-	-	-	-	-	-	-	-	-	-	-	-	-	-	
GOSHEN	12/16/18	6		1-3	.333	0-0	.000	2-2	1.000	1	1	2	2.0	3	0	0	1	0	4	4.0
VALPARAISO	12/19/18	dnp	-	-	-	-	-	-	-	-	-	-	-	-	-	-	-	-	-	
at North Dakota State	12/28/18	dnp	-	-	-	-	-	-	-	-	-	-	-	-	-	-	-	-	-	
at North Dakota	12/30/18	dnp	-	-	-	-	-	-	-	-	-	-	-	-	-	-	-	-	-	
Totals		0	6	1-3	.333	0-0	.000	2-2	1.000	1	1	2	2.0	3	0	0	1	0	4	4.0

Games played: 1
Minutes/game: 6.0
Points/game: 4.0
FG Pct: 33.3
FT Pct: 100.0

Rebounds/game: 2.0
Blocks/game: 1.0

CAREER STATS

Season	gp-gs	min/avg	Total fg-fga	pct	3-Point fg-fga	pct	F-Throws ft-fa	pct	Rebounds off def tot	avg	pf	fo	ast	to	blk	stl	Scoring pts	avg
2018-19	1-0	6/6.0	1-3	.333	0-0	.000	2-2	1.000	1	1	2	2.0	3	0	0	0	4	4.0
TOTAL	1-0	6/6.0	1-3	.333	0-0	.000	2-2	1.000	1	1	2	2.0	3	0	0	0	4	4.0



**AMAYA
JOHNS**

23

Freshman | 5-9
 Plainfield, Ill.
 Oswego East

GUARD

CAREER NOTES

- Majoring in General Studies
- Father Jemal played football at Central State

PRIOR TO FORT WAYNE

- Was a 2016-17 All-Southwest Prairie Conference selection
- Named to the Record/Ledger Second Team All-Area as a junior
- Averaged 10.0 points, 4.0 rebounds and 1.7 assists per game her senior year
- Set a school record for free throws made in a season with 71

SEASON HIGH	CATEGORY	CAREER HIGH
8, vs. Goshen, 12/16/2018	Minutes	8, vs. Goshen, 12/16/2018
2, two times	Points	2, two times
1, two times	Rebounds	1, two times
	Assists	
1, vs. IU Kokomo, 11/6/2018	Steals	1, vs. IU Kokomo, 11/6/2018
1, vs. IU Kokomo, 11/6/2018	Blocks	1, vs. IU Kokomo, 11/6/2018
1, two times	FG Made	1, two times
3, two times	FG Attempts	3, two times
	3-PT Made	
1, two times	3-PT Attempts	1, two times
	FT Made	
	FT Attempts	

ABOUT PLAINFIELD, ILLINOIS

- Population of 39,581
- Is a village that includes land in Plainfield and Wheatland townships

ABOUT OSWEGO EAST HIGH SCHOOL

- Nickname is the Wolves

SEASON STATS

Opponent	Date	gs	min	Total		3-Pointers		Free throws		Rebounds				pf	a	t/o	blk	stl	pts	avg
				fg-fga	pct	3fg-fga	pct	ft-fa	pct	off	def	tot	avg							
IU KOKOMO	11/06/18	4		1-3	.333	0-1	.000	0-0	.000	0	1	1	1.0	0	0	0	1	1	2	2.0
at Western Michigan	11/08/18	dnp		-	-	-	-	-	-	-	-	-	-	-	-	-	-	-	-	-
TAYLOR (IN)	11/12/18	1		0-1	.000	0-1	.000	0-0	.000	0	0	0	0.5	0	0	1	0	0	0	1.0
at Eastern Illinois	11/15/18	dnp		-	-	-	-	-	-	-	-	-	-	-	-	-	-	-	-	-
at Evansville	11/20/18	dnp		-	-	-	-	-	-	-	-	-	-	-	-	-	-	-	-	-
SIUE	11/24/18	dnp		-	-	-	-	-	-	-	-	-	-	-	-	-	-	-	-	-
at Loyola-Chicago	11/29/18	dnp		-	-	-	-	-	-	-	-	-	-	-	-	-	-	-	-	-
at Milwaukee	12/01/18	dnp		-	-	-	-	-	-	-	-	-	-	-	-	-	-	-	-	-
EASTERN MICHIGAN	12/08/18	dnp		-	-	-	-	-	-	-	-	-	-	-	-	-	-	-	-	-
GOSHEN	12/16/18	8		1-3	.333	0-0	.000	0-0	.000	0	1	1	0.7	0	0	0	0	0	2	1.3
VALPARAISO	12/19/18	dnp		-	-	-	-	-	-	-	-	-	-	-	-	-	-	-	-	-
at North Dakota State	12/28/18	dnp		-	-	-	-	-	-	-	-	-	-	-	-	-	-	-	-	-
at North Dakota	12/30/18	dnp		-	-	-	-	-	-	-	-	-	-	-	-	-	-	-	-	-
Totals		0	13	2-7	.286	0-2	.000	0-0	.000	0	2	2	0.7	0	0	1	1	1	4	1.3

Games played: 3
 Minutes/game: 4.3
 Points/game: 1.3
 FG Pct: 28.6
 3FG Pct: 0.0

Rebounds/game: 0.7
 Turnovers/game: 0.3
 Steals/game: 0.3
 Blocks/game: 0.3

CAREER STATS

			Total		3-Point		F-Throws		Rebounds											Scoring	
Season	gp-gs	min/avg	fg-fga	pct	fg-fga	pct	ft-fa	pct	off	def	tot	avg	pf	fo	ast	to	blk	stl	pts	avg	
2018-19	3-0	13/4.3	2-7	.286	0-2	.000	0-0	.000	0	2	2	0.7	0	0	0	1	1	1	4	1.3	
TOTAL	3-0	13/4.3	2-7	.286	0-2	.000	0-0	.000	0	2	2	0.7	0	0	0	1	1	1	4	1.3	



**SOFIA
RAJALA**

Sophomore | 6-0
 Helsinki, Finland
 Mäkelänrinne Sports

31

FORWARD

CAREER NOTES

- Majoring in Psychology

PRIOR TO FORT WAYNE

- Named to the Finnish National team in 2016
- Previously a member of the U16 and U18 Finnish National teams
- Led her team in scoring at the 2016 U18 European Championships
- Named the 2017 Finnish Korisliiga League Rookie of the Year

CAREER VS. SOUTH DAKOTA STATE

			Total		3-Point		F-Throws		Rebounds											Scoring	
Season	gp-gs	min/avg	fg-fga	pct	fg-fga	pct	ft-fa	pct	off	def	tot	avg	pf	fo	ast	to	blk	stl	pts	avg	
2017-18	1-0	8/8.0	1-4	.250	0-1	.000	0-0	.000	1	0	1	1.0	0	0	0	0	0	0	2	2.0	
TOTAL	1-0	8/8.0	1-4	.250	0-1	.000	0-0	.000	1	0	1	1.0	0	0	0	0	0	0	2	2.0	

SINGLE-GAME HIGHS [all-time ranking]:
Points: 2, at South Dakota State -- 01/27/18
Rebounds: 1, at South Dakota State -- 01/27/18
FG made: 1, at South Dakota State -- 01/27/18
FG attempts: 4, at South Dakota State -- 01/27/18
3FG attempts: 1, at South Dakota State -- 01/27/18

SEASON STATS

Opponent	Date	gs	min	Total		3-Pointers		Free throws		Rebounds				pf	a	t/o	blk	stl	pts	avg
				fg-fga	pct	3fg-fga	pct	ft-fga	pct	off	def	tot	avg							
IU KOKOMO	11/06/18		dnp	-	-	-	-	-	-	-	-	-	-	-	-	-	-	-	-	
at Western Michigan	11/08/18		dnp	-	-	-	-	-	-	-	-	-	-	-	-	-	-	-	-	
TAYLOR (IN)	11/12/18		dnp	-	-	-	-	-	-	-	-	-	-	-	-	-	-	-	-	
at Eastern Illinois	11/15/18		dnp	-	-	-	-	-	-	-	-	-	-	-	-	-	-	-	-	
at Evansville	11/20/18		dnp	-	-	-	-	-	-	-	-	-	-	-	-	-	-	-	-	
SIUE	11/24/18		dnp	-	-	-	-	-	-	-	-	-	-	-	-	-	-	-	-	
at Loyola-Chicago	11/29/18		dnp	-	-	-	-	-	-	-	-	-	-	-	-	-	-	-	-	
at Milwaukee	12/01/18		1	0-0	.000	0-0	.000	0-0	.000	0	0	0	0.0	0	0	0	0	0	0.0	
EASTERN MICHIGAN	12/08/18		dnp	-	-	-	-	-	-	-	-	-	-	-	-	-	-	-	-	
GOSHEN	12/16/18		5	0-0	.000	0-0	.000	1-2	.500	0	1	1	0.5	1	1	1	0	0	0.5	
VALPARAISO	12/19/18		dnp	-	-	-	-	-	-	-	-	-	-	-	-	-	-	-	-	
at North Dakota State	12/28/18		dnp	-	-	-	-	-	-	-	-	-	-	-	-	-	-	-	-	
at North Dakota	12/30/18		dnp	-	-	-	-	-	-	-	-	-	-	-	-	-	-	-	-	
Totals		0	6	0-0	.000	0-0	.000	1-2	.500	0	1	1	0.5	1	1	1	0	0	0.5	

Games played: 2
Minutes/game: 3.0
Points/game: 0.5
FT Pct: 50.0

Rebounds/game: 0.5
Assists/game: 0.5
Turnovers/game: 0.5
Assist/turnover ratio: 1.0

SEASON HIGH	CATEGORY	CAREER HIGH
5, vs. Goshen, 12/16/2018	Minutes	10, vs. Oral Roberts, 1/4/2018
1, vs. Goshen, 12/16/2018	Points	4, at South Dakota, 1/13/2018
1, vs. Goshen, 12/16/2018	Rebounds	2, three times
1, vs. Goshen, 12/16/2018	Assists	1, vs. Goshen, 12/16/2018
	Steals	
	Blocks	
	FG Made	1, two times
	FG Attempts	3, at #23 Michigan, 12/16/2017
	3-PT Made	1, vs. Western Illinois, 12/30/2017
	3-PT Attempts	3, at #23 Michigan, 12/16/2017
1, vs. Goshen, 12/16/2018	FT Made	4, at South Dakota, 1/13/2018
2, vs. Goshen, 12/16/2018	FT Attempts	4, at South Dakota, 1/13/2018

ABOUT HELSINKI, FINLAND

- Population 642,045 | • Is the capital of Finland
- Helsinki is more known for its Art Nouveau architecture. It is considered the Design Capital of the world

ABOUT FINLAND

- Population 5,509,717 | • Official language is Finnish
- Earn its Independence from Ruissia on December 6, 1917
- Finland is one of the countries with the most mature population. Half of voters are estimated to be over 50 years old
- In terms of medals and gold medals won per capita, Finland is the best performing country in Olympic history

CAREER STATS

			Total		3-Point		F-Throws		Rebounds											Scoring	
Season	gp-gs	min/avg	fg-fga	pct	fg-fga	pct	ft-fa	pct	off	def	tot	avg	pf	fo	ast	to	blk	stl	pts	avg	
2017-18	10-1	52/5.2	3-12	.250	1-6	.167	6-6	1.000	5	2	7	0.7	7	0	0	5	0	0	13	1.3	
2018-19	2-0	6/3.0	0-0	.000	0-0	.000	1-2	.500	0	1	1	0.5	1	0	1	1	0	0	1	0.5	
TOTAL	12-1	58/4.8	3-12	.250	1-6	.167	7-8	.875	5	3	8	0.7	8	0	1	6	0	0	14	1.2	



**KIERSTYN
REPP**

Sophomore | 5-10
 Archbold, Ohio
 Archbold

32

GUARD

CAREER NOTES

- Majoring in Business

PRIOR TO FORT WAYNE

- Set school records for most three-point field goals made in a game (9), season (87) and in a career (180)
- Named All-NWOAL, Crescent News, District 7 and All-Northwest District Division III Player of the Year

CAREER VS. SOUTH DAKOTA STATE

Season	gp-gs	min/avg	Total		3-Point		F-Throws		Rebounds				Scoring						
			fg-fga	pct	fg-fga	pct	ft-fga	pct	off	def	tot	avg	pts	pts	avg	pts	pts	avg	pts
2017-18	2-0	62/31.0	11-24	.458	7-17	.412	0-0	.000	1	2	3	1.5	2	0	2	3	0	1	29 14.5
TOTAL	2-0	62/31.0	11-24	.458	7-17	.412	0-0	.000	1	2	3	1.5	2	0	2	3	0	1	29 14.5

SINGLE-GAME HIGHS [all-time ranking]:

Points: 16, at South Dakota State -- 01/27/18

Rebounds: 3, at South Dakota State -- 01/27/18

Assists: 1, at South Dakota State -- 01/27/18; South Dakota State -- 02/24/18

Steals: 1, at South Dakota State -- 01/27/18

FG made: 6, at South Dakota State -- 01/27/18

FG attempts: 12, at South Dakota State -- 01/27/18; South Dakota State -- 02/24/18

ABOUT ARCHBOLD, OHIO

- Population 4,346 | Founded 1866
- A more well known former residents of Archbold include current NASCAR driver Sam Hornish Jr.
- Home to Sauder Woodworking Company, fifth largest residential furniture manufacturer in America and the world's leading manufacturer of ready-to-assemble furniture.

ABOUT ARCHBOLD HIGH SCHOOL

- Nicknamed the Blue Streaks.
- Holds eight state titles across four difference sports.
- Women's basketball owns 11 NWOAL championship titles

SEASON STATS

Opponent	Date	gs	min	Total		3-Pointers		Free throws		Rebounds				pf	a	t/o	blk	stl	pts	avg
				fg-fga	pct	3fg-fga	pct	ft-fga	pct	off	def	tot	avg							
IU KOKOMO	11/06/18	*	30	5-12	.417	3-10	.300	0-0	.000	0	2	2	2.0	3	1	2	1	2	13	13.0
at Western Michigan	11/08/18	*	31	3-8	.375	3-7	.429	0-0	.000	0	4	4	3.0	2	0	2	0	1	9	11.0
TAYLOR (IN)	11/12/18	*	14	3-5	.600	1-3	.333	0-0	.000	0	2	2	2.7	2	1	1	1	0	7	9.7
at Eastern Illinois	11/15/18	*	32	6-13	.462	5-10	.500	0-0	.000	0	4	4	3.0	2	1	2	0	1	17	11.5
at Purdue	11/18/18	*	28	2-12	.167	0-6	.000	0-0	.000	0	1	1	2.6	5	0	2	1	1	4	10.0
at Evansville	11/20/18	*	36	5-11	.455	4-9	.444	2-2	1.000	0	7	7	3.3	1	3	3	0	0	16	11.0
SIUE	11/24/18	*	30	1-7	.143	0-6	.000	0-0	.000	0	4	4	3.4	2	0	0	0	0	2	9.7
at Loyola-Chicago	11/29/18	*	9	1-1	1.000	1-1	1.000	0-0	.000	0	0	0	3.0	0	0	0	0	0	3	8.9
at Milwaukee	12/01/18	*	36	4-8	.500	3-6	.500	1-2	.500	0	2	2	2.9	1	0	0	0	0	12	9.2
EASTERN MICHIGAN	12/08/18	*	40	5-10	.500	4-8	.500	3-4	.750	0	0	0	2.6	1	0	2	0	3	17	10.0
GOSHEN	12/16/18	*	38	8-16	.500	4-9	.444	0-0	.000	0	2	2	2.5	1	3	1	2	0	20	10.9
VALPARAISO	12/19/18	*	37	4-13	.308	3-10	.300	2-2	1.000	0	1	1	2.4	1	2	2	0	0	13	11.1
at North Dakota State	12/28/18	*	35	2-9	.222	2-6	.333	2-2	1.000	0	2	2	2.4	2	2	0	0	0	8	10.8
at North Dakota	12/30/18	*	28	1-11	.091	1-7	.143	0-0	.000	0	2	2	2.4	5	0	0	1	0	3	10.3
Totals			11	424	50-136	.368	34-98	.347	10-12	.833	0	33	33	2.4	28	13	17	6	10	144 10.3

Games played: 14

Minutes/game: 30.3

Points/game: 10.3

FG Pct: 36.8

3FG Pct: 34.7

FT Pct: 83.3

Rebounds/game: 2.4

Assists/game: 0.9

Turnovers/game: 1.2

Assist/turnover ratio: 0.8

Steals/game: 0.7

Blocks/game: 0.4

CAREER STATS

Season	gp-gs	min/avg	Total		3-Point		F-Throws		Rebounds				pf	fo	ast	to	blk	stl	Scoring	
			fg-fga	pct	fg-fga	pct	ft-fga	pct	off	def	tot	avg							pts	avg
2017-18	28-14	750/26.8	75-220	.341	61-183	.333	11-15	.733	12	58	70	2.5	53	1	19	33	4	12	222	7.9
2018-19	14-11	424/30.3	50-136	.368	34-98	.347	10-12	.833	0	33	33	2.4	28	2	13	17	6	10	144	10.3
TOTAL	42-25	1174/28.0	125-356	.351	95-281	.338	21-27	.778	12	91	103	2.5	81	3	32	50	10	22	366	8.7

PURDUE FORT WAYNE SEASON STATS

RECORD:	OVERALL	HOME	AWAY	NEUTRAL
ALL GAMES	4-10	3-3	1-7	0-0
CONFERENCE	0-2	0-0	0-2	0-0
NON-CONFERENCE	4-8	3-3	1-5	0-0

#	Player	gp-gs	min	avg	Total		3-Point		F-Throw		Rebounds				pf	dq	a	to	blk	stl	pts	avg
					fg-fga	fg%	3fg-fga	3fg%	ft-fga	ft%	off	def	tot	avg								
00	Jaelencia Williams	14-6	261	18.6	48-90	.533	0-0	.000	33-64	.516	30	37	67	4.8	34	0	5	27	17	3	129	9.2
03	Sierra Bell	10-0	141	14.1	20-58	.345	3-12	.250	16-20	.800	6	23	29	2.9	24	0	19	21	2	14	59	5.9
04	Ellie Dykstra	13-1	89	6.8	9-16	.563	0-2	.000	1-2	.500	5	9	14	1.1	13	0	1	5	3	2	19	1.5
05	Hannah Hess	14-3	308	22.0	31-77	.403	14-46	.304	8-9	.889	3	36	39	2.8	26	0	23	21	2	12	84	6.0
10	Hannah Albrecht	14-13	410	29.3	41-110	.373	13-36	.361	11-13	.846	6	23	29	2.1	29	1	25	26	0	6	106	7.6
12	Anna Lappenkuper	14-14	442	31.6	32-85	.376	13-37	.351	6-9	.667	15	28	43	3.1	31	1	47	37	5	25	83	5.9
13	De'Jour Young	14-14	470	33.6	63-147	.429	15-43	.349	50-70	.714	33	59	92	6.6	37	1	28	41	8	21	191	13.6
14	Sh'Toya Sanders	11-8	230	20.9	36-78	.462	0-0	.000	15-30	.500	27	40	67	6.1	31	0	5	19	12	13	87	7.9
15	Camara Douglas	1-0	6	6.0	1-3	.333	0-0	.000	2-2	1.000	1	1	2	2.0	3	0	0	0	1	0	4	4.0
23	Amaya Johns	3-0	13	4.3	2-7	.286	0-2	.000	0-0	.000	0	2	2	0.7	0	0	0	1	1	1	4	1.3
31	Sofia Rajala	2-0	6	3.0	0-0	.000	0-0	.000	1-2	.500	0	1	1	0.5	1	0	1	1	0	0	1	0.5
32	Kierstyn Repp	14-11	424	30.3	50-136	.368	34-98	.347	10-12	.833	0	33	33	2.4	28	2	13	17	6	10	144	10.3
Team											28	25	53				3					
Total.....		14	2800		333-807	.413	92-276	.333	153-233	.657	154	317	471	33.6	257	5	167	219	57	107	911	65.1
Opponents.....		14	2800		341-815	.418	92-273	.337	192-269	.714	178	344	522	37.3	228	2	200	212	47	98	966	69.0

TEAM STATISTICS	PFW	OPP
SCORING	911	966
Points per game	65.1	69.0
Scoring margin	-3.9	-
FIELD GOALS-ATT	333-807	341-815
Field goal pct	.413	.418
3 POINT FG-ATT	92-276	92-273
3-point FG pct	.333	.337
3-pt FG made per game	6.6	6.6
FREE THROWS-ATT	153-233	192-269
Free throw pct	.657	.714
F-Throws made per game	10.9	13.7
REBOUNDS	471	522
Rebounds per game	33.6	37.3
Rebounding margin	-3.6	-
ASSISTS	167	200
Assists per game	11.9	14.3
TURNOVERS	219	212
Turnovers per game	15.6	15.1
Turnover margin	-0.5	-
Assist/turnover ratio	0.8	0.9
STEALS	107	98
Steals per game	7.6	7.0
BLOCKS	57	47
Blocks per game	4.1	3.4
ATTENDANCE	2756	10260
Home games-Avg/Game	6-459	8-1282
Neutral site-Avg/Game	-	0-0

Date	Opponent		Score	Att.
11/06/18	IU KOKOMO	w	87-50	983
11/08/18	at Western Michigan	L	61-69	560
11/12/18	TAYLOR (IN)	w	84-74	441
11/15/18	at Eastern Illinois	L	63-72	139
11/18/18	at Purdue	L	44-78	5970
11/20/18	at Evansville	w	72-66	294
11/24/18	SIUE	L	49-57	351
11/29/18	at Loyola-Chicago	L	67-81	1203
12/01/18	at Milwaukee	L	48-70	481
12/08/18	EASTERN MICHIGAN	L	72-87	351
12/16/18	GOSHEN	w	86-45	181
12/19/18	VALPARAISO	L	64-68	449
* 12/28/18	at North Dakota State	L	54-70	280
* 12/30/18	at North Dakota	L	60-79	1333

* - Conference game

Score by Periods	1st	2nd	3rd	4th	Totals
Purdue Fort Wayne	197	209	248	257	911
Opponents	225	267	227	247	966

PURDUE FORT WAYNE SUMMIT LEAGUE STATS

RECORD:	OVERALL	HOME	AWAY	NEUTRAL
ALL GAMES	0-2	0-0	0-2	0-0
CONFERENCE	0-2	0-0	0-2	0-0
NON-CONFERENCE	0-0	0-0	0-0	0-0

#	Player	gp-gs	min	avg	Total		3-Point		F-Throw		Rebounds											
					fg-fga	fg%	3fg-fga	3fg%	ft-fa	ft%	off	def	tot	avg	pf	dq	a	to	blk	stl	pts	avg
00	Jaelencia Williams	2-1	27	13.5	5-14	.357	0-0	.000	0-0	.000	3	6	9	4.5	3	0	0	1	1	0	10	5.0
03	Sierra Bell	2-0	19	9.5	2-10	.200	0-1	.000	4-4	1.000	0	4	4	2.0	4	0	1	5	0	1	8	4.0
04	Ellie Dykstra	2-0	12	6.0	1-3	.333	0-1	.000	0-0	.000	1	0	1	0.5	1	0	0	1	0	0	2	1.0
05	Hannah Hess	2-0	37	18.5	2-9	.222	0-5	.000	2-2	1.000	1	3	4	2.0	2	0	3	4	0	1	6	3.0
10	Hannah Albrecht	2-2	54	27.0	4-15	.267	3-5	.600	4-4	1.000	1	4	5	2.5	8	0	3	2	0	0	15	7.5
12	Anna Lappenkuper	2-2	67	33.5	5-9	.556	1-2	.500	1-1	1.000	1	4	5	2.5	9	1	7	5	1	7	12	6.0
13	De' Jour Young	2-2	68	34.0	11-29	.379	2-4	.500	5-6	.833	4	7	11	5.5	7	0	5	6	1	1	29	14.5
14	Sh'Toya Sanders	2-1	53	26.5	8-15	.533	0-0	.000	5-12	.417	6	11	17	8.5	4	0	0	6	1	2	21	10.5
32	Kierstyn Repp	2-2	63	31.5	3-20	.150	3-13	.231	2-2	1.000	0	4	4	2.0	7	1	2	0	1	0	11	5.5
Team											9	2	11									
Total.....		2	400		41-124	.331	9-31	.290	23-31	.742	26	45	71	35.5	45	2	21	30	5	12	114	57.0
Opponents.....		2	400		53-115	.461	5-23	.217	38-50	.760	22	61	83	41.5	32	0	31	23	9	12	149	74.5

TEAM STATISTICS	PFW	OPP
SCORING	114	149
Points per game	57.0	74.5
Scoring margin	-17.5	-
FIELD GOALS-ATT	41-124	53-115
Field goal pct	.331	.461
3 POINT FG-ATT	9-31	5-23
3-point FG pct	.290	.217
3-pt FG made per game	4.5	2.5
FREE THROWS-ATT	23-31	38-50
Free throw pct	.742	.760
F-Throws made per game	11.5	19.0
REBOUNDS	71	83
Rebounds per game	35.5	41.5
Rebounding margin	-6.0	-
ASSISTS	21	31
Assists per game	10.5	15.5
TURNOVERS	30	23
Turnovers per game	15.0	11.5
Turnover margin	-3.5	-
Assist/turnover ratio	0.7	1.3
STEALS	12	12
Steals per game	6.0	6.0
BLOCKS	5	9
Blocks per game	2.5	4.5
ATTENDANCE	0	1613
Home games-Avg/Game	0-0	2-806
Neutral site-Avg/Game	-	0-0

Date	Opponent	Score	Att.
* 12/28/18	at North Dakota State	L 54-70	280
* 12/30/18	at North Dakota	L 60-79	1333

* - Conference game

Score by Periods	1st	2nd	3rd	4th	Totals
Purdue Fort Wayne	21	15	36	42	114
Opponents	30	52	33	34	149

TV/RADIO ROSTER



#00 JAELENCIA WILLIAMS
6-2 | Center | So.
Indianapolis, Indiana



#3 SIERRA BELL
5-7 | Guard | Jr.
Danville, Illinois



#4 ELLIE DYKSTRA
6-1 | Forward | Fr.
Byron Center, Michigan



#5 HANNAH HESS
5-10 | Guard | R-So.
Oregon, Ohio



#10 HANNAH ALBRECHT
5-7 | Guard | Jr.
Crown Point, Indiana



#12 ANNA LAPPENKÜPER
5-9 | Guard | Jr.
Herne, Germany



#13 De'JOUR YOUNG
5-7 | Guard | Sr.
Fort Wayne, Indiana



#14 SH'TOYA SANDERS
6-0 | Forward | R-Jr.
Fort Wayne, Indiana



#15 CAMARA DOUGLAS
5-11 | Forward | Fr.
San Diego, California



#23 AMAYA JOHNS
5-9 | Guard | Fr.
Plainfield, Illinois



#31 SOFIA RAJALA
6-0 | Forward | So.
Helsinki, Finland



#32 KIERSTYN REPP
5-10 | Guard | So.
Archbold, Ohio



NIECEE NELSON
Head Coach
Head Coach (3rd Season)
Concordia Portland '02



MARCIE ALBERTS
Assistant Coach
Ohio State '97



HALEY SEIBERT
Assistant Coach
IPFW '15



AKILAH SIMS
Assistant Coach
IUPUI '16



KENDALL FESTERVAND
Graduate Manager
U of Texas at Dallas '18

PRONUNCIATIONS

#00 - Jaelencia - JUH-len-see-uh

#12 - Anna Lappenküper - AHH-nuh LAH-pen-cooper

#13 - De'Jour - D-zuhr

#14 Sh'Toya - SHU-toy-yuh

#23 Amaya - UH-my-uh

#31 - Rajala - RUH-jah-Luh

#32 - Repp - Rep

Niecee - KNEE-see

Seibert - sigh-BURT



PURDUE FORT WAYNE MASTODONS

OVERALL	LEAGUE	NON-LEAGUE	HOME	AWAY	NEUTRAL
4-10	0-2	4-8	3-3	1-7	0-0

Head Coach: Niecee Nelson
Alma Mater: Concordia (OR) '02
Record at Fort Wayne: 13-58 (3 years)
42nd Season in Program History
All-Time Record: 469-662

Assistant Coaches: Marcie Alberts,
Haley Seibert and Akilah Sims
Team Captains: De'Jour Young



00 • JAELENCIA WILLIAMS • (JUH-len-see-uh) • C • Fr. • 6-2 • Indianapolis, Ind. • Southport

Season	GP	GS	MPG	Pts	PPG	RPG	Ast	Blk	Stl	FG%	3FG%	FT%
	14	6	18.6	129	9.2	4.79	5	17	3	.533	.000	.516
Career	GP	GS	MPG	Pts	PPG	RPG	Ast	Blk	Stl	FG%	3FG%	FT%
	42	21	18.5	358	8.5	4.86	15	43	10	.496	.667	.600

Season High	Career High
21, vs Eastern Michigan, 12/8/18	21, vs Eastern Michigan, 12/8/18
9, vs Goshen, 12/16/18	10, at Illinois, 11/10/17
3, at Milwaukee, 12/1/18	3, two times
1, three times	2, at Belmont, 11/15/17
5, vs Goshen, 12/16/18	5, vs Goshen, 12/16/18
6, two times	7, vs South Dakota, 3/3/18
9, vs Eastern Michigan, 12/8/18	9, vs Eastern Michigan, 12/8/18

Career Notes
20-point games.....11
10-point games.....17
10-rebound games.....1
5-rebound games.....21
Games with a block.....28
5-5 games.....1



3 • SIERRA BELL • G • Jr. • 5-7 • Danville, Ill. • Northeast C.C.

Season	GP	GS	MPG	Pts	PPG	RPG	Ast	Blk	Stl	FG%	3FG%	FT%
	10	0	14.1	59	5.9	2.90	19	2	14	.345	.250	.800
Career	GP	GS	MPG	Pts	PPG	RPG	Ast	Blk	Stl	FG%	3FG%	FT%
	10	0	14.1	59	5.9	2.90	19	2	14	.345	.250	.800

Season High	Career High
15, vs IU Kokomo, 11/6/18	15, vs IU Kokomo, 11/6/18
8, vs IU Kokomo, 11/6/18	8, vs IU Kokomo, 11/6/18
5, vs IU Kokomo, 11/6/18	5, vs IU Kokomo, 11/6/18
8, vs IU Kokomo, 11/6/18	8, vs IU Kokomo, 11/6/18
5, vs IU Kokomo, 11/6/18	5, vs IU Kokomo, 11/6/18
5, at Eastern Illinois, 11/15/18	3PT, 2, at Eastern Illinois, 11/15/18
4, three times	FT, 4, three times

Career Notes
10-point games.....1
5-point games.....6
5-rebound games.....3
5-assist games.....1
3-steal games.....1
5-5 games.....1



4 • ELLIE DYKSTRA • F • Fr. • 6-1 • Byron Center Mich. • Byron Center

Season	GP	GS	MPG	Pts	PPG	RPG	Ast	Blk	Stl	FG%	3FG%	FT%
	13	1	6.8	19	1.5	1.08	1	3	2	.563	.000	.500
Career	GP	GS	MPG	Pts	PPG	RPG	Ast	Blk	Stl	FG%	3FG%	FT%
	13	1	6.8	19	1.5	1.08	1	3	2	.563	.000	.500

Season High	Career High
6, vs Eastern Michigan, 12/8/18	6, vs Eastern Michigan, 12/8/18
7, vs IU Kokomo, 11/6/18	7, vs IU Kokomo, 11/6/18
1, at Western Michigan, 11/8/18	1, at Western Michigan, 11/8/18
1, two times	1, two times
2, vs IU Kokomo, 11/6/18	2, vs IU Kokomo, 11/6/18
3, vs Eastern Michigan, 12/8/18	3, vs Eastern Michigan, 12/8/18
1, vs Taylor, 11/12/18	1, vs Taylor, 11/12/18

Career Notes
5-point games.....1
5-rebound games.....1



5 • HANNAH HESS • G • So. • 5-9 • Oregon, Ohio • Clay H.S.

Season	GP	GS	MPG	Pts	PPG	RPG	Ast	Blk	Stl	FG%	3FG%	FT%
	14	3	22.0	84	6.0	2.79	23	2	12	.403	.304	.889
Career	GP	GS	MPG	Pts	PPG	RPG	Ast	Blk	Stl	FG%	3FG%	FT%
	41	5	16.4	181	4.4	1.76	38	4	22	.342	.282	.889

Season High	Career High
16, vs Taylor, 11/12/18	16, vs Taylor, 11/12/18
7, two times	7, two times
7, at Eastern Illinois, 11/15/18	7, at Eastern Illinois, 11/15/18
3, vs Taylor, 11/12/18	3, vs Taylor, 11/12/18
6, vs Taylor, 11/12/18	6, vs Taylor, 11/12/18
4, vs Taylor, 11/12/18	4, vs Taylor, 11/12/18
3, vs Eastern Michigan, 12/8/18	3, two times

Career Notes
10-point games.....4
5-point games.....16
5-rebound games.....3
3-three's games.....4
3-steal games.....1



10 • HANNAH ALBRECHT • G • Fr. • 5-7 • Crown Point, Ind. • Saint Joseph's (IN)

Season	GP	GS	MPG	Pts	PPG	RPG	Ast	Blk	Stl	FG%	3FG%	FT%
	14	13	29.3	106	7.6	2.07	25	0	6	.373	.361	.846
Career	GP	GS	MPG	Pts	PPG	RPG	Ast	Blk	Stl	FG%	3FG%	FT%
	41	39	30.4	302	7.4	2.61	78	5	26	.383	.396	.833

Season High	Career High
15, at Loyola-Chicago, 11/29/18	23, at Maryville, 1/5/17 *
6, at Evansville, 11/20/18	6, vs Valparaiso, 12/19/18
5, vs Valparaiso, 12/19/18	8, vs Bellarmine, 1/28/17 *
1, two times	3, six times *
6, two times	10, vs Bellarmine, 1/28/17 *
3, at Loyola-Chicago, 11/29/18	3, six times *
4, at North Dakota, 12/30/18	7, vs Denver, 1/6/18

Career Notes
20-point games.....1
10-point games.....12
5-rebound games.....6
5-assist games.....2
3-three's games.....3
3-steal games.....2



12 • ANNA LAPPENKUPER • (AHH-nuh LAH-pen-cooper) • G • So. • 5-8 • Herne, Germany • Otto Hahn Gymnasium

Season	GP	GS	MPG	Pts	PPG	RPG	Ast	Blk	Stl	FG%	3FG%	FT%
	14	14	31.6	83	5.9	3.07	47	5	25	.376	.351	.667
Career	GP	GS	MPG	Pts	PPG	RPG	Ast	Blk	Stl	FG%	3FG%	FT%
	70	65	30.2	469	6.7	2.56	147	9	67	.365	.282	.767

Season High	Career High
12, vs Valparaiso, 12/19/18	19, at Xavier, 11/29/17
5, vs IU Kokomo, 11/6/18	6, at Illinois, 11/10/17
7, vs Goshen, 12/16/18	7, two times
5, at North Dakota, 12/30/18	4, at North Dakota, 12/30/18
5, vs Valparaiso, 12/19/18	7, at Xavier, 11/29/17
3, at Loyola-Chicago, 11/29/18	3PT, 3, four times
4, at Evansville, 11/20/18	FT, 8, vs Loyola-Chicago, 11/12/17

Career Notes
10-point games.....20
5-point games.....45
5-rebound games.....7
5-assist games.....8
3-three's games.....4
3-steal games.....6



13 • De'JOUR YOUNG • (D-zhur) • G • Jr. • 5-7 • Fort Wayne, Ind. • Concordia Lutheran

Season	GP	GS	MPG	Pts	PPG	RPG	Ast	Blk	Stl	FG%	3FG%	FT%
	14	14	33.6	191	13.6	6.57	28	8	21	.429	.349	.714
Career	GP	GS	MPG	Pts	PPG	RPG	Ast	Blk	Stl	FG%	3FG%	FT%
	99	88	29.5	1036	10.5	5.18	166	38	115	.398	.259	.748

Season High	Career High
22, vs IU Kokomo, 11/6/18	23, vs Eastern Illinois, 12/8/17
14, vs Valparaiso, 12/19/18	14, vs Valparaiso, 12/19/18
4, two times	5, three times
4, at Evansville, 11/20/18	5, vs Grace, 11/16/2015
8, two times	9, vs Eastern Illinois, 12/8/17
3, at Loyola-Chicago, 11/29/18	3PT, 3, two times
8, vs Eastern Michigan, 12/8/18	FT, 8, two times

Career Notes
Double-Double.....5
20-point games.....8
10-point games.....51
10-rebound games.....7
5-assist games.....3
5-5 games.....3



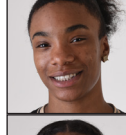
14 • Sh'TOYA SANDERS • (SHU-toy-yuh) • F • Jr. • 6-0 • Fort Wayne, Ind. • Chicago State

Season	GP	GS	MPG	Pts	PPG	RPG	Ast	Blk	Stl	FG%	3FG%	FT%
	11	8	20.9	87	7.9	6.09	5	12	13	.462	.000	.500
Career	GP	GS	MPG	Pts	PPG	RPG	Ast	Blk	Stl	FG%	3FG%	FT%
	11	8	20.9	87	7.9	6.09	5	12	13	.462	.000	.500

15 CAMPBELL, C. (D/IL) (Lb) 5' 5" 5-11, San Diego, Calif. Mount Miguel

Season High	Career High
13, two times	38, at Northern Illinois, 11/22/16 *
11, at Western Michigan, 11/8/18	23, at Northern Illinois, 11/22/16 *
2, two times	3, three times
3, four times	5, three times *
3, vs IU Kokomo, 11/6/18	6, two times *
6, two times	FG, 11, at Northern Illinois, 11/22/16 *
4, two times	FT, 15, at Northern Illinois, 11/22/16 *

Career Notes
10-point games.....4
5-point games.....8
10-rebound games.....1
5-rebound games.....7
Games with a block.....6

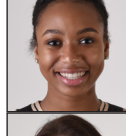


15 • CAM DOUGLAS • (RUH-jah-Luh) • F • Fr. • 5-11 • San Deigo, Calif. • Mount Miguel

Season	GP	GS	MPG	Pts	PPG	RPG	Ast	Blk	Stl	FG%	3FG%	FT%
Career	GP	GS	MPG	Pts	PPG	RPG	Ast	Blk	Stl	FG%	3FG%	FT%

Season High	Career High
4, vs Goshen, 12/16/18	4, vs Goshen, 12/16/18
2, vs Goshen, 12/16/18	2, vs Goshen, 12/16/18
1, vs Goshen, 12/16/18	1, vs Goshen, 12/16/18
1, vs Goshen, 12/16/18	1, vs Goshen, 12/16/18
2, vs Goshen, 12/16/18	2, vs Goshen, 12/16/18

Career Notes



23 • AMAYA JOHNS • (UH-my-uh) • G • Fr. • 5-9 • Plainfield, Ill. • Oswego East

Season	GP	GS	MPG	Pts	PPG	RPG	Ast	Blk	Stl	FG%	3FG%	FT%
	3	0	4.3	4	1.3	0.67	0	1	1	.286	.000	.000
Career	GP	GS	MPG	Pts	PPG	RPG	Ast	Blk	Stl	FG%	3FG%	FT%
	3	0	4.3	4	1.3	0.67	0	1	1	.286	.000	.000

31 SOFIA RAJALA • (R/IIH-igh-Iuh) • F • Fr • 6-0 • Helsinki, Finland • Mäkelänrinne Sports

Season High	Career High
2, two times	2, two times
1, two times	1, two times
1, two times	1, two times
1, two times	1, two times
	3PT, 1, two times
	FT, 1, two times

Career Notes



31 • SOFIA RAJALA • (RUH-jah-Luh) • F • Fr. • 6-0 • Helsinki, Finland • Mäkelänrinne Sports

Season	GP	GS	MPG	Pts	PPG	RPG	Ast	Blk	Stl	FG%	3FG%	FT%
2	0	3.0	1	0.5	0.50	1	0	0	.000	.000	.500	
Career	GP	GS	MPG	Pts	PPG	RPG	Ast	Blk	Stl	FG%	3FG%	FT%
12	1	4.8	14	1.2	0.67	1	0	0	.250	.167	.875	

32 • KIERSTYN REPP • (Rep) • G • Fr • 5-10 • Archbold, Ohio • Archbold

Season High	Career High
1, vs Goshen, 12/16/18	4, at South Dakota, 1/13/18
1, vs Goshen, 12/16/18	2, three times
1, vs Goshen, 12/16/18	1, vs Goshen, 12/16/18
	1, two times
	1, two times
	3PT, 1, two times
1, vs Goshen, 12/16/18	FT, 4, at South Dakota, 1/13/18

Career Notes
Member of the Finish National Team.
Missed most of the 2017-18 season due to injury.



32 • KIERSTYN REPP • (Rep) • G • Fr. • 5-10 • Archbold, Ohio • Archbold

Season	14	11	30.3	144	10.3	2.36	13	6	10	.368	.347	.833
Career	GP	GS	MPG	Pts	PPG	RPG	Ast	Blk	Stl	FG%	3FG%	FT%
	42	25	28.0	366	8.7	2.45	32	10	22	.351	.338	.778

NIECEE NELSON • Head Coach • **Career Record:** 13-58 • **Alma Mater:** Concordia Portland '01

Season High	Career High
20, vs Goshen, 12/16/18	23, at North Dakota State, 1/20/18
7, at Evansville, 11/20/18	7, at Evansville, 11/20/18
3, two times	3, two times
3, vs Eastern Michigan, 12/8/18	3, vs Eastern Michigan, 12/8/18
8, vs Goshen, 12/16/18	8, two times
5, at Eastern Illinois, 11/15/18	3PT, 7, at North Dakota State, 1/20/18
3, vs Eastern Michigan, 12/8/18	FT, 3, three times

Career Notes
20-point games.....2
10-point games.....17
5-point games.....27
3-steal games.....1
3-three's games.....18
Games with a 3.....29



NIECEE NELSON • Head Coach • Career Record: 13-58 • Alma Mater: Concordia Portland '02

• KNEE-see • Enters 3rd season at the helm of the program. Named head coach on April 18, 2016.
• 14th head coach in program history. • Was an assistant at Fort Wayne during 2004-05 season.
• Played four years at Concordia. 2000-01 NAIA All-American and 1997-98 Conference Freshman of the Year.

• Was an assistant coach at the University of San Diego for 11 seasons.
• Helped lead San Diego to an overall record of 222-124 since 2005, including five consecutive 20-win seasons and WNIT appearances.
• Niecee and her husband, Steve, have two children: son Sebastian and daughter Skyler.