



OMAHA VOLLEYBALL

For Immediate Release: Thursday, Sept. 28, 2017 • Contact: Bonnie Ryan • Email: bryan@omavs.com • Office: (402) 554-3267

Social Media: omahavb @omahavb @omavs/@omahavb omahavolleyball

2017 SCHEDULE/RESULTS

Date	Opponent	Time (CT)
------	----------	-----------

CYCLONE INVITATIONAL

Aug. 25	vs. New Mexico	L, 3-0
Aug. 26	at Iowa State	L, 3-0
	vs. Kent State	L, 3-0

HAWKEYE CLASSIC

Sept. 1	at Iowa	L, 0-3
	vs. Indiana State	W, 3-1
Sept. 2	vs. Indiana State	W, 3-2

DRAKE INVITATIONAL

Sept. 7	at Drake	L, 3-2
Sept. 8	vs. San Jose State	L, 3-1
	vs. Montana	L, 3-0
Sept. 9	vs. Southeast Missouri	W, 3-1

OMAHA CHALLENGE

Sept. 14	Kansas State (BA)	L, 3-1
Sept. 15	Northern Iowa (BA)	L, 3-1
Sept. 16	#10 Nebraska (BA)	L, 3-0

Sept. 22	South Dakota State* (BA)	W, 3-0
Sept. 29	at Western Illinois*	7 p.m.
Oct. 1	at Fort Wayne*	Noon
Oct. 3	Denver* (BA)	7 p.m.
Oct. 7	South Dakota* (BA)	5 p.m.
Oct. 13	at North Dakota State*	7 p.m.
Oct. 15	at Oral Roberts*	1 p.m.
Oct. 20	at South Dakota State*	7 p.m.
Oct. 27	Western Illinois* (SF)	7 p.m.
Oct. 28	Fort Wayne* (SF)	5 p.m.
Nov. 3	at South Dakota*	7 p.m.
Nov. 5	at Denver*	3 p.m.
Nov. 10	Oral Roberts* (SF)	7 p.m.
Nov. 12	North Dakota State* (SF)	2 p.m.
Nov. 17-19	at Summit League Championship	TBA

* - Denotes Summit League game • All home games listed in **bold italics** and played at Baxter Arena or Sapp Fieldhouse, as designated.

MEDIA AVAILABILITY

Student-athletes and coaches are available for interviews after practice or by arrangement through the Omaha athletic communications office. All volleyball interview requests must be arranged through Associate Director of Communications Bonnie Ryan at least one day in advance.



OMAHA SET FOR WEEKEND ROAD SWING



OMAHA MAVERICKS

Record: 4-10 (0-0 Summit League)
Head Coach: Rose Shires (28th Year)
Record at School: 487-375
Career Record: Same
Last Match: W, 3-0 vs. SDSU (9/22)

Statistical Leaders

Kills: Mackenzie Horkey -- 2.60 K/S
Assists: Sydney O'Shaughnessy -- 9.78 A/S
Digs: Claire Mountjoy -- 4.47 D/S
Blocks: Bella Sade -- 0.98 B/S
Aces: Sydney O'Shaughnessy -- 0.35 SA/S



WESTERN ILLINOIS LEATHERNECKS

Record: 5-11 (0-2 Summit League)
Head Coach: Kelly Richardson (3rd Year)
Record at School: 12-67
Career Record: 88-158 (10th Year)
Last Game: L, 3-1 at Oral Roberts (9/24)

All-Time Series: UNO leads 6-4

Last Meeting:
 UNO won 3-2 in Macomb, Ill. (11/13/16)



FORT WAYNE MASTODONS

Record: 8-9 (0-2 Summit League)
Head Coach: Steve Florio (4th Year)
Record at School: 41-72
Career Record: Same
Last Game: L, 3-2 at Denver (9/24)

All-Time Series: FW leads 10-1

Last Meeting:
 FW won 3-1 in Fort Wayne, Ind. (10/23/16)

THIS WEEKEND'S SCHEDULE

Friday, Sept. 29 • OMAHA at WESTERN ILLINOIS • 7 p.m. • Western Hall -- Macomb, Ill.

Live Stats: OMavs.com • Live Video: OMavs.com • Live Audio: None • TV: None • Radio: None

Sunday, Oct. 1 • OMAHA at FORT WAYNE • Noon CT • Gates Sports Center -- Fort Wayne, Ind.

Live Stats: OMavs.com • Live Video: OMavs.com • Live Audio: OMavs.com • TV: None • Radio: None

This Weekend

The Omaha volleyball team makes its first Summit League road swing this weekend, visiting Western Illinois and Fort Wayne. The Mavericks face the Leathernecks on Friday, Sept. 29 at 7 p.m., followed by a Noon CT match against the Mastodons on Sunday, Oct. 1. Live stats, audio and video, as available, will be linked on OMavs.com.

Quick Hits

- Omaha secured its first home win and its first sweep of the year with a 3-0 victory over South Dakota State last Friday. It marked the Mavericks' first sweep since Nov. 20, 2015.
- The victory was also Omaha's second conference-opening win since joining the Summit League in 2012.
- Junior Abby Bergsten's .565 attack percentage against SDSU was the second-highest of any Maverick this season.
- The Mavericks welcomed 10,525 fans to the Omaha Challenge over three days at Baxter Arena, Sept. 14-16. The tournament finale saw a crowd of 5,351 fans for the match between No. 10 Nebraska and Omaha, marking the largest volleyball crowd in Baxter Arena history.
- Omaha was picked to finish in a tie for fifth in the 2017 Summit League Preseason Poll. It finished seventh in the league standings in 2016.
- Head coach Rose Shires, the winningest coach in program history, is in her 28th year at Omaha.
- Senior Sydney O'Shaughnessy has led the Mavericks in double-doubles each of the last three seasons with 19 in her freshman campaign, 24 as a sophomore and 13 more as a junior. Her 63 career double-doubles are the most of any active Maverick.
- O'Shaughnessy is the only Maverick with All-Summit honors on her resume, as she was a 2015 all-league performer.
- Omaha returns eight letterwinners, including four starters, from 2016.
- All-time, Omaha is 1,023-603-7.

WHEN REFERRING TO THE MAVERICKS

As part of a university-wide rebranding effort that began in 2011, media and fans are reminded to refer to the school as the "University of Nebraska Omaha," "Omaha" or "UNO." "Nebraska Omaha" and "Nebraska-Omaha" are no longer acceptable references.



Primary Logo



Secondary Logo

MAVERICKS VS. OTHER CONFERENCES

Big 12 0-2
Iowa State 0-1
Kansas State 0-1

Big Sky 0-1
Montana 0-1

Big Ten 0-2
Iowa 0-1
Nebraska 0-1

MAC 0-1
Kent State 0-1

Missouri Valley 2-2
Drake 0-1
Indiana State 2-0
Northern Iowa 0-1

Mountain West 0-2
New Mexico 0-1
San Jose State 0-1

Ohio Valley 1-0
Southeast Missouri 1-0

2017 OMAHA VOLLEYBALL ROSTER

No.	Name	Cl.	Pos.	Ht.	Hometown (High School)
1	Sydney O'Shaughnessy	Sr.	S	5-8	Omaha, Neb. (Marian)
2	Kelli Nee	Fr.	S	5-8	Powhatan, Va. (Powhatan)
3	Abby Bergsten	Jr.	OH	6-1	Council Bluffs, Iowa (Lewis Central/Iowa Western CC)
4	Chloe Dousette	So.	OH	6-2	St. Paul, Minn. (Cretin-Derham Hall)
6	Bella Sade	Fr.	MB	6-2	Marion, Iowa (Marion)
8	Claire Mountjoy	Fr.	L	5-5	Omaha, Neb. (Elkhorn)
9	Abigayle Meyer	Fr.	RS	6-2	Murdock, Neb. (Elmwood-Murdock)
10	Gessica Gdowski	So.	OH	6-1	Fremont, Neb. (Fremont)
11	Anna Blaschko	Fr.	MB	6-1	Shakopee, Minn. (Shakopee)
14	Daria Taylor	So.	MB	6-2	Rock Island, Ill. (Rock Island)
15	Amanda Conlin	Sr.	MB	6-2	Glendale, Ariz. (Deer Valley)
17	Mackenzie Horkey	Jr.	OH	5-9	Jordan, Minn. (Southwest Christian)
24	Meagen Roth	So.	RS	6-0	Lincoln, Neb. (Lincoln Southeast)
27	Ellie Brown	So.	MB	6-1	Holdrege, Neb. (Holdrege)

Head Coach: Rose Shires (28th Year) • **Assistant Coaches:** Elena Pietro (3rd Year), Micah Rhodes (1st Year)

Volunteer Assistant Coach: Gina Mancuso (1st Year)

PRONUNCIATION GUIDE

Anna Blaschko: BLASH-ko • **Chloe Dousette:** doo-SET • **Gessica Gdowski:** JESS-ick-uh guh-DOW-skee

Sydney O'Shaughnessy: O-SHAW-ness-EE • **Gina Mancuso:** man-CUE-so • **Elena Pietro:** PEE-tro

Meagen Roth: MAY-gen • **Daria Taylor:** DAR-ee-uh

Scouting the Western Illinois Leathernecks

Western Illinois enters the week with a record of 5-11 (0-2 Summit League) after a 3-1 loss at Oral Roberts last Sunday and looks to snap a six-match losing streak. Emma Norris leads the Leathernecks with 2.70 kills per set, while Mackenzie Steckler and Emilee Dechant have a team-high 1.00 blocks per set. Claire Grove has 4.27 digs per set, which ranks fourth in the league behind Omaha's Claire Mountjoy (4.47 d/s).

Head coach Kelly Richardson is in her third season at WIU with a record of 12-67 and a career mark of 88-158.

Omaha leads the all-time series with WIU, 6-4. Their last meeting came Nov. 13, 2016 in Macomb, Ill., where the Mavericks won 3-2.

Scouting the Fort Wayne Mastodons

Fort Wayne enters the week with a record of 8-9 (0-2 Summit League) after a 3-2 loss at Denver last Sunday and looks to snap a three-match losing skid. Nicole Rightnowar leads the Mastodons with 3.33 kills per set, and Madison Jaqua's 9.50 assists per set are fourth in the league.

Head coach Steve Florio is in his fourth season at Fort Wayne and totes a career record of 41-72.

Fort Wayne leads the all-time series with Omaha, 10-1. Their last meeting came Oct. 23, 2016 in Fort Wayne, Ind., where the Mastodons won 3-1.

Last Time Out: Omaha Sweeps Jackrabbits to Open Summit League Play

Omaha secured its first sweep of the season to open Summit League play last Friday, defeating South Dakota State 3-0 (25-15, 25-17, 25-15) at Baxter Arena.

Junior Abby Bergsten led the Mavericks with a season-high-tying 15 kills on a season-best .565 hitting efficiency. Junior Mackenzie Horkey recorded her fifth double-double of the year with 12 kills and 12 digs alongside two blocks.

Senior Sydney O'Shaughnessy put up a match-high 36 assists with nine digs and three aces, and freshman Claire Mountjoy tallied a match-high 14 scoops and two aces. Freshman Bella Sade paced the Mavericks at the net with five blocks.

Omaha outhit SDSU .289 to .051 and outblocked the Jacks 7-3. SDSU's team hitting percentage was the lowest of any Maverick opponent in 2017.

Mavericks Take All-Tournament Honors

Over the opening month of play, five Mavericks have earned all-tournament recognition.

Freshman Claire Mountjoy opened her career at the Cyclone Invitational (Aug. 25-26), averaging 5.56 digs per set. Mountjoy appeared in all nine sets over the weekend and tallied double-figure digs in all three matches: 18 vs. New



THE 2017 MAVERICKS (L-R): Bella Sade, Abigayle Meyer, Daria Taylor, Gessica Gdowski, Meagen Roth, Anna Blaschko, Sydney O'Shaughnessy, Claire Mountjoy, Kelli Nee, Mackenzie Horkey, Abby Bergsten, Ellie Brown, Amanda Conlin, Chloe Dousette.

Mexico, 15 at Iowa State and 17 vs. Kent State. For her performance, the Elkhorn, Neb., native was named to the Cyclone Invitational All-Tournament Team.

Senior Sydney O'Shaughnessy and freshman Bella Sade both took home the hardware at the Hawkeye Classic (Sept. 1-2), as both were named to the all-tournament team. O'Shaughnessy averaged 10.25 assists, 2.83 digs, 0.42 blocks, 0.67 aces and 1.00 kills per set for the weekend, adding a pair of double-doubles and reaching a career high with 59 assists vs. Indiana State. Sade averaged 2.75 kills and 0.75 blocks per set while hitting .368 over three matches.

Junior Abby Bergsten picked up recognition with a spot on the Drake Invitational All-Tournament Team (Sept. 7-9), averaging 3.18 kills, 0.64 digs and 0.45 blocks per set. She achieved a season-high 15 kills vs. Montana, hitting .343.

Junior Mackenzie Horkey was the last Maverick to earn all-tournament plaudits, as she earned a spot on the team at the Omaha Challenge (Sept. 14-16). Horkey averaged a team-best 2.00 kills and 2.18 digs per set, and she had a double-double against UNI with 13 kills and 12 digs, followed by a team-high nine kills vs. No. 10 Nebraska.

Sydney's Smashing Milestones

Senior Sydney O'Shaughnessy is making her mark in the record books, as she has 3,687 career assists to her credit to rank fifth in school history. Her next target on the list is Kylie Lebeda (2000-03), who had 3,951.

O'Shaughnessy also moved into the top 20 in Summit League history for career assists last weekend, as she is now 17th on the list.

O'Shaughnessy passed both the 1,000 career digs and 3,000 career assists marks at the end of her junior season. She was the first Maverick since Amy Steffel (1993-96) to put up at least 3,000 assists and 1,000 digs in a career.

Mack's Back

Junior outside hitter Mackenzie Horkey earned a medical redshirt after suffering a season-ending injury six matches into the 2016 season. The Jordan, Minn., native started the first six matches of 2016, averaging 3.35 kills and 3.55 digs per set.

In 2017, Horkey has picked up right where she left off, averaging a team-leading 2.60 kills per set with seven double-figure kill efforts and fifth double-doubles. She put up a season-high 17 kills with 13 digs vs. Indiana State (Sept. 2), then followed with 12 kills and a season-high 17 digs vs. Drake (Sept. 7).

Standout Starts

Freshmen Bella Sade and Anna Blaschko have both had a standout start to their collegiate careers, and both have served as starting middle blockers for the Mavericks.

Sade has a team-leading 0.98 blocks per set and is fourth on the team with 2.35 kills per set while hitting .265. Her 19 kills vs. SEMO on Sept. 9 were the second-highest total of any Maverick this season, while her seven blocks were also the second-highest single-match mark by a UNO player.

Blaschko has averaged 2.12 kills per set with a team-high .328 hitting efficiency and is second on the team with 0.86 blocks per set. Entering this weekend, she is the Summit League leader in solo blocks (15).

SUMMIT LEAGUE STANDINGS

Through Matches of Sept. 24, 2017

School	Conf	Overall
North Dakota State.....	2-0.....	11-3
Oral Roberts.....	2-0.....	5-9
Denver.....	1-0.....	10-3
Omaha.....	1-0.....	4-10
South Dakota.....	1-1.....	7-7
Fort Wayne.....	0-2.....	8-9
Western Illinois.....	0-2.....	5-11
South Dakota State.....	0-2.....	2-13

SUMMIT LEAGUE PLAYERS OF THE WEEK

OFFENSIVE

Date.....	Player(s) (School(s))
Aug. 28.....	Kayla Principato (Denver)
Sept. 5.....	Brianna Rasmusson (North Dakota State)
Sept. 11.....	Laura Milos (Oral Roberts)
Sept. 18.....	Kelly Law (South Dakota)
Sept. 25.....	Laura Milos (Oral Roberts)

DEFENSIVE

Date.....	Player(s) (School(s))
Aug. 28.....	Mikaela Purnell (North Dakota State)
Sept. 5.....	Bella Lien (North Dakota State)
Sept. 11.....	Mikaela Purnell (North Dakota State)
Sept. 18.....	Mikaela Purnell (North Dakota State)
Sept. 25.....	Anne Rasmussen (South Dakota)

OMAHA'S ACTIVE CAREER LEADERS

Matches Played.....	Sydney O'Shaughnessy.....	106
Sets Played.....	Sydney O'Shaughnessy.....	406
Total Attacks.....	Mackenzie Horkey.....	2,385
Kills.....	Mackenzie Horkey.....	731
Assists.....	Sydney O'Shaughnessy.....	3,687
Digs.....	Sydney O'Shaughnessy.....	1,190
Service Aces.....	Sydney O'Shaughnessy.....	119
Solo Blocks.....	Amanda Conlin.....	20
Assisted Blocks.....	Sydney O'Shaughnessy.....	147
Total Blocks.....	Sydney O'Shaughnessy.....	152
Double-Doubles.....	Sydney O'Shaughnessy.....	63

MAVERICKS ON THE CAREER CHARTS

CAREER ASSISTS

1. Amy Steffel.....	1993-96.....	5,482
2. Emily Myers.....	2008-11.....	4,102
3. Pam Largen.....	1988-91.....	3,984
4. Kylie Lebeda.....	2000-03.....	3,951
5. Sydney O'Shaughnessy.....	2014-present.....	3,687
6. Bethany Tygert.....	1997-00.....	3,380
7. Wendy Melcher.....	1980-83.....	3,343
8. Christie Johnson.....	2002-05.....	3,019
9. Darla Melcher.....	1986-87.....	2,628
10. Katie Agnew.....	2004-07.....	2,359

MAVERICKS BY THE NUMBERS

OVERALL

Record	4-10
Home	1-3
Away	0-3
Neutral	3-4
vs. Top 10 Teams	0-1
vs. Top 25 Teams	0-1
vs. Teams Receiving Top 25 Votes	0-1
vs. Unranked Teams	4-8

BY SETS

3 Sets	1-6
4 Sets	2-3
5 Sets	1-1

BY KILLS

Leading in Kills	2-2
Trailing in Kills	0-8
Tied in Kills	2-0

BY DIGS

Leading in Digs	2-1
Trailing in Digs	1-9
Tied in Digs	1-0

BY BLOCKS

Leading in Blocks	1-5
Trailing in Blocks	2-4
Tied in Blocks	1-1

BY HITTING PERCENTAGE

Leading in Hitting Percentage	4-1
Trailing in Hitting Percentage	0-9
Tied in Hitting Percentage	0-0
Hitting .300 or Above	1-0
Hitting Between .200 and .299	3-2
Hitting Between .100 and .199	0-6
Hitting Below .100	0-2
Opponent Hitting .300 or Above	0-2
Opponent Hitting Between .200 and .299	1-6
Opponent Hitting Between .100 and .199	2-2
Opponent Hitting Below .100	1-0
Opponent Hitting Below .000	0-0

BY SERVICE ACES

Leading in Service Aces	2-5
Trailing in Service Aces	2-4
Tied in Service Aces	0-1

What Makes Up the Mavericks

- Omaha returns eight letterwinners from the 2016 season, including four starters.
- UNO returns 53 percent of its total offensive production from last season, as this year's returners accounted for 725 of the Mavericks' 1,366 kills.
- The Mavericks also return 72 percent of their total blocking production from last year, with the returners credited for 237 out of 331 stops.
- Dousette is UNO's top returning hitter, having averaged 3.00 kills per set last year.
- Dousette was named to the 2016 Summit League All-Freshmen Team.
- The Mavericks are made up of five freshmen, five sophomores, two juniors and two seniors.
- Omaha's roster includes six players from Nebraska, three from Minnesota, two from Iowa and one apiece from Illinois, Arizona and Virginia.

Dousette Doing Her Part

Sophomore outside hitter Chloe Dousette had a delayed start to her freshman season due to injury, but finally hit the court last September and never looked back. The St. Paul, Minn., native went on to earn Summit League All-Newcomer Team recognition after appearing in 15 matches with seven starts, and she averaged 3.00 kills per set with nine double-figure kill efforts. Dousette led the Mavericks in kills in 10 of the last 12 matches of the year.

Dousette made her 2017 season debut at the Hawkeye Classic (Sept. 1-2) and had an immediate impact, helping the Mavericks to a pair of wins over Indiana State. In the first match against the Sycamores, Dousette had 11 kills with 12 digs, and she followed that with another double-double on 21 kills and 14 digs with two blocks and three aces.

Dousette's 21-kill effort matched her career high, and she owns the Omaha's last four 20+ kill performances, having tallied three as a freshman.

Double-Double Tracker

The Mavericks owned a combined 34 double-doubles last season, led by 13 from setter Sydney O'Shaughnessy.

Through the first month of the 2017 season, O'Shaughnessy's 63 career double-doubles are the most of any active Maverick.

Player	2014	2015	2016	2017	Career
Abby Bergsten	---	---	---	1	1
Chloe Dousette	---	---	---	2	2
Mackenzie Horkey	8	13	1	5	27
Sydney O'Shaughnessy	19	24	13	7	63
Meagen Roth	---	---	3	2	5

The Division I Years

Omaha has shown steady growth in a variety of areas since it embarked on its Division I era seven years ago. Below is a look at how UNO has stacked up as a team in each of its Division I seasons since 2011-12:

	2011	2012	2013	2014	2015	2016	2017
Record	5-23	6-22	7-22	14-9	19-13	8-22	4-10
Hitting Percentage	.127	.163	.141	.196	.205	.157	.184
Kills Per Set	10.9	11.4	11.0	12.0	13.2	11.8	12.3
Assists Per Set	10.2	10.7	10.4	11.1	12.3	11.0	11.3
Service Aces Per Set	1.1	1.5	1.3	1.2	1.3	1.2	1.3
Digs Per Set	15.6	15.0	14.9	15.2	17.6	16.1	15.6
Blocks Per Set	1.8	1.9	2.2	2.3	2.2	1.6	1.9

Fresh Faces

The Mavericks have welcomed a transfer and five true freshmen to the roster this season: junior outside hitter Abby Bergsten (Council Bluffs, Iowa), freshman libero Claire Mountjoy (Omaha, Neb.), freshman setter Kelli Nee (Powhatan, Va.), freshman right side hitter Abigayle Meyer (Murdock, Neb.), freshmen middle blockers Bella Sade (Marion, Iowa) and Anna Blaschko (Shakopee, Minn.).

Bergsten began her collegiate career with two seasons at Iowa Western Community College, where she was a two-time ICCAC All-Region selection. She helped IWCC to a national runner-up finish in 2016 and was second on the team with 3.43 kills per set while ranking 10th nationally with a .364 hitting percentage.

Nee was a two-time all-state selection at Powhatan High School. Sade, named a Top 50 Junior by PrepVolleyball.com, was also an all-state pick and helped Marion High School to a state semifinalist finish in 2014, followed by state quarterfinalist finishes in 2015 and 2016. Blaschko, a product of Shakopee High School, was an all-state honoree and

paced her team in blocks and hitting percentage three consecutive seasons.

Mountjoy was an all-conference outside hitter at Elkhorn High School, where she was part of three straight state tournament appearances. Meyer, who also hails from Nebraska, picked up all-state an honorable mention award as a senior at Elmwood-Murdock High School.

2017 Slate Takes Mavericks Around the Nation

Omaha's 2017 schedule includes 27 matches against 20 different opponents, and the team will play in eight states across the country. UNO will square off with opponents from seven other conferences, with three from the Missouri Valley, two each from the Big Ten, Big 12 and Mountain West and one apiece from the MAC, Big Sky and Ohio Valley. Five opponents -- Nebraska, Iowa State, K-State, Northern Iowa and Denver -- played in the 2016 NCAA Tournament.

Entering 2017, the Mavericks have never faced three of their opponents: New Mexico, Kent State and Montana. UNO holds a combined all-time record of 190-174 over all teams on the slate this season.

Academic Accolades

Omaha earned the American Volleyball Coaches Association Team Academic Award for the 18th straight year, the AVCA announced in July. As a team, the Mavericks recorded a 3.73 GPA during the 2016-17 academic year to garner the annual honor.

UNO's academic effort was highlighted by 10 volleyball student-athletes making the Dean's List or Chancellor's List and three who held 4.0 GPAs for the academic year. The 2016-17 year marked both the 18th straight and 21st overall time the team earned the AVCA's annual award.

Shires Guides Mavericks as Winningest Coach in School History

Head coach Rose Shires is the all-time winningest coach in 47 years of UNO volleyball history. In her 28th year at the helm of the Maverick program, Shires owns a career record of 487-375 (.565), with the most wins of the five coaches who have served at Omaha.

The 1996 AVCA National Coach of the Year and a two-time conference coach of the year, Shires has enjoyed tremendous success as UNO's guide. The 1996 campaign saw her lead UNO to a national championship as well as its first North Central Conference championship since 1987, followed by an Elite Eight appearance in 1997. In NCAA Tournament play, Shires' squads have combined for 11 appearances and a 10-10 postseason mark.

Shires is assisted by assistant coach Elena Pietro, who is in her third season, assistant coach Micah Rhodes, in his first year, and volunteer assistant coach Gina Mancuso, who is in her first year on the Maverick staff.

Summit League Preseason Poll Announced

Omaha was picked to finish in a tie for fifth in the 2017 Summit League Preseason Coaches' Poll, the conference office announced Aug. 17. Defending league champion Denver was selected as the league's favorite after collecting five first-place votes and 47 total points. South Dakota finished second with three-first place votes and 45 points, while Oral Roberts claimed the third spot with 35 points. Fort Wayne (33) came in fourth, with Omaha (22) and North Dakota State (22) knotted for fifth. South Dakota State (12) and Western Illinois (eight) rounded out the poll.

Home Sweet Home Advantage

The 2017 season will see Omaha play 10 home contests, including seven conference tilts. UNO will play at two venues, with six matches at Baxter Arena and four matches at Sapp Fieldhouse.

Omaha has earned at least five home wins in each of the last three seasons, tallying five in 2014, seven in 2015 and five in 2016.

No Longer the Newcomers

In 2017-18, Omaha is in its third year with full Summit League and NCAA Division I postseason eligibility. The Mavericks competed as a reclassifying Division I school from 2011-14, and they officially joined the Summit League in 2012. During the reclassification period, UNO was ineligible for the league tournament and NCAA postseason play, but played a full regular-season conference schedule in its final three transitional years before assuming full eligibility in 2015-16.

Up Next

Omaha returns to action on Tuesday, Oct. 3, hosting Denver at 7 p.m. at Baxter Arena. Links to live stats, audio and video will be available on OMavs.com.

THE LAST TIME...

OMAHA AS A TEAM...

Won a match 3-0
vs. South Dakota State (9/22/17)

Won a match 3-1
vs. SEMO (9/9/17)

Won a match 3-2
vs. Indiana State (9/2/17)

Lost a match 3-0
vs. No. 10 Nebraska (9/16/17)

Lost a match 3-1
vs. UNI (9/15/17)

Lost a match 3-2
at Drake (9/7/17)

Had 100 kills in a match
100 vs. Northern Colorado (10/26/99)

Had 200 attacks in a match
208 vs. Fort Wayne (9/23/16)

Had .400 or better hitting
.410 vs. St. Edward's (10/2/10)

Had 10 or more service aces
10 vs. Indiana State (9/1/17)

Had 20 or more total blocks
20 at Nebraska-Kearney (9/9/09)

Had 100 or more digs
101 at IUPUI (11/14/15)

AN INDIVIDUAL MAVERICK...

Had 20 or more kills
Chloe Dousette -- 21 vs. Indiana State (9/2/17)

Had 30 or more kills
Tracy Ankeny -- 35 at Augustana (11/3/00)

Had 50 or more assists
Sydney O'Shaughnessy -- 50 vs. SEMO (9/9/17)

Had 10 or more blocks
Amanda Conlin -- 10 vs. Murray State (9/17/16)

Had 25 or more digs
Claire Mountjoy -- 28 vs. UNI (9/15/17)

Had 35 or more digs
Angie Reicks -- 46 vs. Central Missouri (11/13/09)

Had 5 or more service aces
Kimberly Bailey -- 5 vs. Oral Roberts (11/20/15)

Had a Double-Double
Mackenzie Horkey -- vs. South Dakota State (9/22/17)

Had a Triple-Double
Michaela Schimmer -- vs. South Dakota (11/15/13)

2017 OVERALL STATS

RECORD:	OVERALL	HOME	AWAY	NEUTRAL
ALL GAMES	4-10	1-3	0-3	3-4
CONFERENCE	1-0	1-0	0-0	0-0
NON-CONFERENCE	3-10	0-3	0-3	3-4

#	Player	sp	Attack					Set		Serve			re	Dig		Blocking						points
			k	k/s	e	ta	pct	a	a/s	sa	se	sa/s		dig	dig/s	bs	ba	total	blk/s	be	bhe	
17	Mackenzie Horkey	43	112	2.60	56	375	.149	3	0.07	3	7	0.07	8	120	2.79	1	6	7	0.16	0	1	
3	Abby Bergsten	32	83	2.59	34	239	.205	1	0.03	3	9	0.09	4	43	1.34	0	12	12	0.38	0	0	-
4	Chloe Dousette	23	55	2.39	24	200	.155	5	0.22	8	5	0.35	9	42	1.83	0	6	6	0.26	1	0	-
6	Bella Sade	51	120	2.35	43	291	.265	1	0.02	8	28	0.16	0	31	0.61	5	45	50	0.98	5	2	-
11	Anna Blaschko	51	108	2.12	32	232	.328	1	0.02	0	2	0.00	0	2	0.04	15	29	44	0.86	5	0	-
24	Meagen Roth	32	53	1.66	22	161	.193	12	0.38	8	16	0.25	6	70	2.19	0	8	8	0.25	0	0	-
15	Amanda Conlin	19	22	1.16	12	64	.156	2	0.11	1	6	0.05	0	14	0.74	0	12	12	0.63	3	2	-
1	Sydney O'Shaughnessy	51	38	0.75	16	123	.179	499	9.78	18	22	0.35	0	146	2.86	2	18	20	0.39	7	6	-
9	Abigayle Meyer	22	16	0.73	21	77	-.065	2	0.09	4	9	0.18	1	33	1.50	1	11	12	0.55	0	0	-
14	Daria Taylor	3	2	0.67	1	10	.100	0	0.00	0	0	0.00	0	3	1.00	0	1	1	0.33	1	0	-
10	Gessica Gdowski	27	18	0.67	19	110	-.009	3	0.11	6	11	0.22	5	64	2.37	0	2	2	0.07	0	0	-
8	Claire Mountjoy	51	0	0.00	1	2	-.500	46	0.90	7	11	0.14	14	228	4.47	0	0	0	0.00	0	0	-
	TEAM	-	-	-	-	-	-	-	-	-	-	-	10	-	-	-	-	-	-	-	-	-
	OMAHA	51	627	12.29	281	1884	.184	575	11.27	66	126	1.29	57	796	15.61	24	150	99.0	1.94	22	11	-
	Opponents	51	649	12.73	259	1824	.214	599	11.75	57	71	1.12	66	851	16.69	20	146	93.0	1.82	24	17	-

Team Statistics	OMAHA	OPP
ATTACK		
Kills	627	649
Errors	281	259
Total Attacks	1884	1824
Attack Pct	.184	.214
Kills/Set	12.3	12.7
SET		
Assists	575	599
Assists/Set	11.3	11.7
SERVE		
Aces	66	57
Errors	126	71
Aces/Set	1.3	1.1
SERVE RECEPTIONS		
Errors	57	66
Errors/Set	1.1	1.3
DEFENSE		
Digs	796	851
Digs/Set	15.6	16.7
BLOCKING		
Block Solo	24	20
Block Assist	150	146
Total Blocks	99.0	93.0
Blocks/Set	1.9	1.8
Block Errors	22	24
Ball handling errors	11	17
ATTENDANCE		
Total	10606	3610
Dates/Avg Per Date	4/2652	3/1203
Neutral site #/Avg	7/76	
Current win streak	1	-
Home win streak	1	-

Date	Opponent	Score	Score by set	Att.
Aug 25	vs New Mexico	L 0-3	21-25,17-25,20-25	0
Aug 26	at Iowa State	L 0-3	9-25,21-25,23-25	1865
Aug 26	vs Kent State	L 0-3	18-25,23-25,21-25	0
Sep 01	at IOWA	L 0-3	18-25,14-25,18-25	1086
Sep 01	vs INS	w 3-1	25-19,26-24,23-25,25-20	382
Sep 02	vs INS	w 3-2	24-26,25-22,23-25,25-13,15-9	150
#Sep 07	at Drake	L 2-3	25-11,25-16,21-25,17-25,13-15	659
#Sep 08	vs San Jose State	L 1-3	16-25,28-26,16-25,15-25	0
#Sep 08	vs Montana	L 0-3	23-25,23-25,19-25	0
#Sep 09	vs Southeast Missouri	w 3-1	23-25,30-28,25-14,25-23	0
Sep 14	KANSAS STATE	L 1-3	22-25,18-25,25-18,18-25	1514
Sep 15	UNI	L 1-3	14-25,25-19,18-25,22-25	3061
Sep 16	#10 NEBRASKA	L 0-3	24-26,15-25,13-25	5351
*Sep 22	SOUTH DAKOTA STATE	w 3-0	25-15,25-17,25-15	680

Record in 3-set matches: 1-6

Record in 4-set matches: 2-3

Record in 5-set matches: 1-1

2017 SUMMIT LEAGUE STATS

RECORD:	OVERALL	HOME	AWAY	NEUTRAL
ALL GAMES	1-0	1-0	0-0	0-0
CONFERENCE	1-0	1-0	0-0	0-0
NON-CONFERENCE	0-0	0-0	0-0	0-0

##	Player	sp	Attack					Set		Serve			re	Dig		Blocking					bhe	points
			k	k/s	e	ta	pct	a	a/s	sa	se	sa/s		dig	dig/s	bs	ba	total	blk/s	be		
3	Abby Bergsten	3	15	5.00	2	23	.565	0	0.00	0	0	0.00	0	1	0.33	0	1	1	0.33	0	0	-
17	Mackenzie Horkey	3	12	4.00	3	25	.360	0	0.00	0	0	0.00	0	12	4.00	0	2	2	0.67	0	0	-
15	Amanda Conlin	1	2	2.00	0	4	.500	0	0.00	0	0	0.00	0	0	0.00	0	0	0	0.00	1	1	-
6	Bella Sade	3	4	1.33	2	10	.200	0	0.00	0	3	0.00	0	0	0.00	0	5	5	1.67	1	0	-
11	Anna Blaschko	3	4	1.33	3	10	.100	0	0.00	0	0	0.00	0	0	0.00	2	0	2	0.67	0	0	-
24	Meagen Roth	3	3	1.00	3	13	.000	1	0.33	1	1	0.33	0	6	2.00	0	2	2	0.67	0	0	-
1	Sydney O'Shaughnessy	3	2	0.67	1	9	.111	36	12.00	3	2	1.00	0	9	3.00	0	0	0	0.00	1	0	-
14	Daria Taylor	1	0	0.00	0	2	.000	0	0.00	0	0	0.00	0	0	0.00	0	0	0	0.00	1	0	-
10	Gessica Gdowski	3	0	0.00	0	1	.000	1	0.33	0	0	0.00	0	3	1.00	0	0	0	0.00	0	0	-
8	Claire Mountjoy	3	0	0.00	0	0	.000	3	1.00	2	0	0.67	0	14	4.67	0	0	0	0.00	0	0	-
	#TM	-	-	-	-	-	-	-	-	-	-	-	0	-	-	-	-	-	-	-	-	-
	OMAHA	3	42	14.00	14	97	.289	41	13.67	6	6	2.00	0	45	15.00	2	10	7.0	2.33	4	1	-
	Opponents	3	25	8.33	20	98	.051	25	8.33	0	2	0.00	6	37	12.33	1	4	3.0	1.00	3	2	-

Team Statistics	OMAHA	OPP
ATTACK		
Kills	42	25
Errors	14	20
Total Attacks	97	98
Attack Pct	.289	.051
Kills/Set	14.0	8.3
SET		
Assists	41	25
Assists/Set	13.7	8.3
SERVE		
Aces	6	0
Errors	6	2
Aces/Set	2.0	0.0
SERVE RECEPTIONS		
Errors	0	6
Errors/Set	0.0	2.0
DEFENSE		
Digs	45	37
Digs/Set	15.0	12.3
BLOCKING		
Block Solo	2	1
Block Assist	10	4
Total Blocks	7.0	3.0
Blocks/Set	2.3	1.0
Block Errors	4	3
Ball handling errors	1	2
ATTENDANCE		
Total	680	0
Dates/Avg Per Date	1/680	0/0
Neutral site #/Avg	0/0	
Current win streak	1	-
Home win streak	1	-

Date	Opponent	Score	Score by set	Att.
*Sep 22	SOUTH DAKOTA STATE	w 3-0	25-15,25-17,25-15	680

Record in 3-set matches: 1-0
 Record in 4-set matches: 0-0
 Record in 5-set matches: 0-0

2017 MATCH-BY-MATCH TEAM STATS

Date	Opponent	sp	attack				set			serve				recept			dig	blocking				bhe	points	score
			k	e	ta	pct	a	ta	pct	sa	se	ta	pct	re	ta	pct		bs	ba	be	total			
Aug 25, 2017	vs New Mexico	3	40	23	127	.134	33	-	-	2	10	-	-	4	-	-	54	0	4	2	2.0	3	-	0-3
Aug 26, 2017	at Iowa State	3	30	20	109	.092	30	-	-	3	6	-	-	2	-	-	44	1	8	1	5.0	1	-	0-3
Aug 26, 2017	vs Kent State	3	31	17	127	.110	30	-	-	3	7	-	-	5	-	-	51	0	18	1	9.0	0	-	0-3
Sep 01, 2017	at IOWA	3	27	19	110	.073	24	-	-	6	8	-	-	5	-	-	45	1	4	1	3.0	1	-	0-3
Sep 01, 2017	vs INS	4	58	16	163	.258	52	-	-	10	11	-	-	5	-	-	71	2	6	0	5.0	0	-	3-1
Sep 02, 2017	vs INS	5	73	14	165	.358	64	-	-	7	12	-	-	9	-	-	78	5	14	0	12.0	0	-	3-2
Sep 07, 2017	at Drake	5	58	21	173	.214	55	-	-	7	13	-	-	1	-	-	83	4	20	1	14.0	1	-	2-3
Sep 08, 2017	vs San Jose State	4	48	19	124	.234	43	-	-	6	6	-	-	8	-	-	42	1	8	0	5.0	1	-	1-3
Sep 08, 2017	vs Montana	3	35	21	112	.125	31	-	-	2	9	-	-	2	-	-	41	1	6	2	4.0	1	-	0-3
Sep 09, 2017	vs Southeast Missouri	4	63	29	145	.234	56	-	-	5	11	-	-	7	-	-	49	0	16	3	8.0	0	-	3-1
Sep 14, 2017	KANSAS STATE	4	46	22	160	.150	43	-	-	4	12	-	-	1	-	-	80	4	10	4	9.0	1	-	1-3
Sep 15, 2017	UNI	4	47	29	170	.106	45	-	-	2	7	-	-	6	-	-	79	1	18	1	10.0	0	-	1-3
Sep 16, 2017	NEBRASKA	3	29	17	102	.118	28	-	-	3	8	-	-	2	-	-	34	2	8	2	6.0	1	-	0-3
Sep 22, 2017	SOUTH DAKOTA STATE	3	42	14	97	.289	41	-	-	6	6	-	-	0	-	-	45	2	10	4	7.0	1	-	3-0
Omaha		51	627	281	1884	.184	575	-	-	66	126	-	-	57	-	-	796	24	150	22	99.0	11	-	
		51	649	259	1824	.214	599	-	-	57	71	-	-	66	-	-	851	20	146	24	93.0	17	-	

Sets played: 51
 Kills per set: 12.29
 Assists per set: 11.27

Service aces per set: 1.29
 Digs per set: 15.61
 Blocks per set: 1.94

Ball handling errors per set: 0.22
 Reception errors per set: 1.12

2017 MATCH-BY-MATCH COMPARISON STATS

Date	Opponent	Score	Kills	Errors	TA	Hit%	Assists	SA	SE	RE	Digs	Blocks	BS	BA	BE	BHE
Aug 25, 2017	vs New Mexico	0-3	40 / 35	23 / 9	127 / 102	.134 / .255	33 / 33	2 / 4	10 / 4	4 / 2	54 / 55	2.0 / 9.0	0 / 2	4 / 14	2 / 1	3 / 2
Aug 26, 2017	at Iowa State	0-3	30 / 45	20 / 14	109 / 107	.092 / .290	30 / 43	3 / 2	6 / 2	2 / 3	44 / 55	5.0 / 7.0	1 / 1	8 / 12	1 / 1	1 / 2
Aug 26, 2017	vs Kent State	0-3	31 / 45	17 / 20	127 / 119	.110 / .210	30 / 43	3 / 5	7 / 4	5 / 3	51 / 66	9.0 / 3.0	0 / 0	18 / 6	1 / 1	0 / 2
Sep 01, 2017	at IOWA	0-3	27 / 40	19 / 11	110 / 103	.073 / .282	24 / 40	6 / 5	8 / 4	5 / 6	45 / 54	3.0 / 6.0	1 / 2	4 / 8	1 / 2	1 / 0
Sep 01, 2017	vs INS	3-1	58 / 52	16 / 19	163 / 155	.258 / .213	52 / 47	10 / 5	11 / 6	5 / 10	71 / 73	5.0 / 5.0	2 / 2	6 / 6	0 / 0	0 / 0
Sep 02, 2017	vs INS	3-2	73 / 56	14 / 24	165 / 171	.358 / .187	64 / 47	7 / 9	12 / 4	9 / 7	78 / 67	12.0 / 5.0	5 / 1	14 / 8	0 / 0	0 / 0
Sep 07, 2017	at Drake	2-3	58 / 54	21 / 27	173 / 181	.214 / .149	55 / 50	7 / 1	13 / 6	1 / 7	83 / 86	14.0 / 7.0	4 / 1	20 / 12	1 / 2	1 / 1
Sep 08, 2017	vs San Jose State	1-3	48 / 59	19 / 14	124 / 120	.234 / .375	43 / 54	6 / 8	6 / 6	8 / 6	42 / 48	5.0 / 7.0	1 / 0	8 / 14	0 / 1	1 / 0
Sep 08, 2017	vs Montana	0-3	35 / 42	21 / 19	112 / 109	.125 / .211	31 / 38	2 / 2	9 / 6	2 / 2	41 / 50	4.0 / 5.0	1 / 0	6 / 10	2 / 4	1 / 2
Sep 09, 2017	vs Southeast Missouri	3-1	63 / 42	29 / 23	145 / 124	.234 / .153	56 / 36	5 / 7	11 / 6	7 / 5	49 / 46	8.0 / 13.0	0 / 3	16 / 20	3 / 4	0 / 3
Sep 14, 2017	KANSAS STATE	1-3	46 / 56	22 / 21	160 / 168	.150 / .208	43 / 51	4 / 1	12 / 10	1 / 4	80 / 83	9.0 / 8.0	4 / 3	10 / 10	4 / 2	1 / 2
Sep 15, 2017	UNI	1-3	47 / 51	29 / 25	170 / 163	.106 / .160	45 / 49	2 / 6	7 / 6	6 / 2	79 / 83	10.0 / 9.0	1 / 4	18 / 10	1 / 1	0 / 0
Sep 16, 2017	NEBRASKA	0-3	29 / 47	17 / 13	102 / 104	.118 / .327	28 / 43	3 / 2	8 / 5	2 / 3	34 / 48	6.0 / 6.0	2 / 0	8 / 12	2 / 2	1 / 1
Sep 22, 2017	SOUTH DAKOTA STATE	3-0	42 / 25	14 / 20	97 / 98	.289 / .051	41 / 25	6 / 0	6 / 2	0 / 6	45 / 37	7.0 / 3.0	2 / 1	10 / 4	4 / 3	1 / 2

Note: Match totals are displayed in the format TEAM/OPPONENT for each category

2017 OVERALL/LEAGUE STATS

OVERALL										CONFERENCE									
#	Player	gp	Attack				Set			pts/s	gp	Attack				Set			pts/s
			k	k/s	e	ta	pct	a	a/s			k	k/s	e	ta	pct	a	a/s	
17	Mackenzie Horkey	43	112	2.60	56	375	.149	3	0.07	-	3	12	4.00	3	25	.360	0	0.00	-
3	Abby Bergsten	32	83	2.59	34	239	.205	1	0.03	-	3	15	5.00	2	23	.565	0	0.00	-
4	Chloe Dousette	23	55	2.39	24	200	.155	5	0.22	-	-	-	-	-	-	-	-	-	-
6	Bella Sade	51	120	2.35	43	291	.265	1	0.02	-	3	4	1.33	2	10	.200	0	0.00	-
11	Anna Blaschko	51	108	2.12	32	232	.328	1	0.02	-	3	4	1.33	3	10	.100	0	0.00	-
24	Meagen Roth	32	53	1.66	22	161	.193	12	0.38	-	3	3	1.00	3	13	.000	1	0.33	-
15	Amanda Conlin	19	22	1.16	12	64	.156	2	0.11	-	1	2	2.00	0	4	.500	0	0.00	-
1	Sydney O'Shaughn	51	38	0.75	16	123	.179	499	9.78	-	3	2	0.67	1	9	.111	36	12.00	-
9	Abigayle Meyer	22	16	0.73	21	77	-.065	2	0.09	-	-	-	-	-	-	-	-	-	-
14	Daria Taylor	3	2	0.67	1	10	.100	0	0.00	-	1	0	0.00	0	2	.000	0	0.00	-
10	Gessica Gdowski	27	18	0.67	19	110	-.009	3	0.11	-	3	0	0.00	0	1	.000	1	0.33	-
8	Claire Mountjoy	51	0	0.00	1	2	-.500	46	0.90	-	3	0	0.00	0	0	.000	3	1.00	-
	OMAHA.....	51	627	12.29	281	1884	.184	575	11.27	-	3	42	14.00	14	97	.289	41	13.67	-
	Opponents.....	51	649	12.73	259	1824	.214	599	11.75	-	3	25	8.33	20	98	.051	25	8.33	-

Player	Serve				Dig		Blocking			
	sa	sa/s	se	re	dig	dig/s	bs	ba	total	b/s
Mackenzie Horkey	3	0.07	7	8	120	2.79	1	6	7	0.16
Abby Bergsten	3	0.09	9	4	43	1.34	0	12	12	0.38
Chloe Dousette	8	0.35	5	9	42	1.83	0	6	6	0.26
Bella Sade	8	0.16	28	0	31	0.61	5	45	50	0.98
Anna Blaschko	0	0.00	2	0	2	0.04	15	29	44	0.86
Meagen Roth	8	0.25	16	6	70	2.19	0	8	8	0.25
Amanda Conlin	1	0.05	6	0	14	0.74	0	12	12	0.63
Sydney O'Shaughn	18	0.35	22	0	146	2.86	2	18	20	0.39
Abigayle Meyer	4	0.18	9	1	33	1.50	1	11	12	0.55
Daria Taylor	0	0.00	0	0	3	1.00	0	1	1	0.33
Gessica Gdowski	6	0.22	11	5	64	2.37	0	2	2	0.07
Claire Mountjoy	7	0.14	11	14	228	4.47	0	0	0	0.00
TEAM	-	-	-	10	-	-	-	-	-	-
OMAHA.....	66	1.29	126	57	796	15.61	24	150	99.0	1.94
Opponents.....	57	1.12	71	66	851	16.69	20	146	93.0	1.82

sa	Serve				Dig		Blocking			
	sa	sa/s	se	re	dig	dig/s	bs	ba	total	b/s
0	0.00	0	0	0	12	4.00	0	2	2	0.67
0	0.00	0	0	0	1	0.33	0	1	1	0.33
-	-	-	-	-	-	-	-	-	-	-
0	0.00	3	0	0	0	0.00	0	5	5	1.67
0	0.00	0	0	0	0	0.00	2	0	2	0.67
1	0.33	1	0	0	6	2.00	0	2	2	0.67
0	0.00	0	0	0	0	0.00	0	0	0	0.00
3	1.00	2	0	0	9	3.00	0	0	0	0.00
-	-	-	-	-	-	-	-	-	-	-
0	0.00	0	0	0	0	0.00	0	0	0	0.00
0	0.00	0	0	0	3	1.00	0	0	0	0.00
2	0.67	0	0	0	14	4.67	0	0	0	0.00
-	-	-	-	0	-	-	-	-	-	-
6	2.00	6	0	0	45	15.00	2	10	7.0	2.33
0	0.00	2	6	6	37	12.33	1	4	3.0	1.00

MAVERICK CAREER AND SEASON HIGHS

#1 SYDNEY O'SHAUGHNESSY

Kills
Season: 5 (vs. Indiana State, 9/2/17)
Career: 7
(Twice, last at Western Illinois, 10/20/15)

Assists
Season: 59 (vs. Indiana State, 9/2/17)
Career: Same

Service Aces
Season: 3
(3 times, last vs. South Dakota State, 9/22/17)
Career: 5 (vs. North Dakota State, 10/23/15)

Digs
Season: 20 (vs. Kansas State, 9/14/17)
Career: 26 (vs. Drake, 8/30/14)

Blocks
Season: 4 (at Drake, 9/7/17)
Career: 6
(3 times, last at Oral Roberts, 10/2/16)

#2 KELLI NEE

Kills
Season: ---
Career: ---

Assists
Season: ---
Career: ---

Service Aces
Season: ---
Career: ---

Digs
Season: ---
Career: ---

Blocks
Season: ---
Career: ---

#3 ABBY BERGSTEN

Kills
Season: 15
(Twice, last vs. South Dakota State, 9/22/17)
Career: Same

Assists
Season: 1 (vs. Kansas State, 9/14/17)
Career: Same

Service Aces
Season: 3 (3 times, last vs. UNI, 9/15/17)
Career: Same

Digs
Season: 13 (vs. Kansas State, 9/14/17)
Career: Same

Blocks
Season: 4 (vs. Kent State, 8/26/17)
Career: Same

#4 CHLOE DOUSETTE

Kills
Season: 21 (vs. Indiana State, 9/2/17)
Career: Same
(3 times, last vs. Indiana State, 9/2/17)

Assists
Season: 2 (vs. Indiana State, 9/2/17)
Career: Same

Service Aces
Season: 3 (vs. Indiana State, 9/2/17)
Career: Same

Digs
Season: 14 (vs. Indiana State, 9/2/17)
Career: Same

Blocks
Season: 2
(Twice, last vs. San Jose State, 9/8/17)
Career: Same
(5 times, last vs. Indiana State, 9/2/17)

#6 BELLA SADE

Kills
Season: 19 (vs. SEMO, 9/9/17)
Career: Same

Assists
Season: 1 (vs. UNI, 9/15/17)
Career: Same

Service Aces
Season: 3 (vs. Kansas State, 9/14/17)
Career: Same

Digs
Season: 5
(Twice, last vs. Kansas State, 9/14/17)
Career: Same

Blocks
Season: 7 (vs. SEMO, 9/9/17)
Career: ---

#8 CLAIRE MOUNTJOY

Kills
Season: ---
Career: ---

Assists
Season: 8 (vs. Kansas State, 9/14/17)
Career: Same

Service Aces
Season: 2
(Twice, last vs. South Dakota State, 9/22/17)
Career: Same

Digs
Season: 28 (vs. UNI, 9/15/17)
Career: ---

Blocks
Season: ---
Career: ---

#9 ABIGAYLE MEYER

Kills
Season: 5
(Twice, last vs. Kent State, 8/26/17)
Career: Same

Assists
Season: 1 (Twice, last at Drake, 9/7/17)
Career: Same

Service Aces
Season: 3 (vs. San Jose State, 9/8/17)
Career: Same

Digs
Season: 15 (vs. Indiana State, 9/2/17)
Career: Same

Blocks
Season: 5 (vs. Indiana State, 9/2/17)
Career: Same

#10 GESSICA GDOWSKI

Kills
Season: 8 (vs. Kansas State, 9/14/17)
Career: 13 (Twice, last vs. IUPUI, 11/21/15)

Assists
Season: 1 (Twice, last vs. SEMO, 9/9/17)
Career: 4 (vs. North Dakota State, 10/23/15)

Service Aces
Season: 3 (at Drake, 9/7/17)
Career: Same
(Twice, last at Drake, 9/7/17)

Digs
Season: 20 (at Drake, 9/7/17)
Career: Same

Blocks
Season: 1 (Twice, last vs. UNI, 9/15/17)
Career: 5 (vs. IUPUI, 11/21/15)

#11 ANNA BLASCHKO

Kills
Season: 15 (vs. Indiana State, 9/2/17)
Career: Same

Assists
Season: 1 (vs. Montana, 9/8/17)
Career: Same

Service Aces
Season: ---
Career: ---

Digs
Season: 1 (Twice, last vs. SEMO, 9/9/17)
Career: Same

Blocks
Season: 8 (at Drake, 9/7/17)
Career: Same

#14 DARIA TAYLOR

Kills
Season: 2 (vs. Montana, 9/8/17)
Career: 5 (vs. Murray State, 9/17/16)

Assists
Season: ---
Career: ---

Service Aces
Season: ---
Career: ---

Digs
Season: 3 (vs. Montana, 9/8/17)
Career: Same

Blocks
Season: 1 (vs. Montana, 9/8/17)
Career: 7 (vs. Murray State, 9/17/16)

#15 AMANDA CONLIN

Kills
Season: 5
(3 times, last vs. UNI, 9/15/17)
Career: 11 (vs. Drake, 9/3/16)

Assists
Season: 1 (Twice, last vs. UNI, 9/15/17)
Career: 1
(7 times, last vs. UNI, 9/15/17)

Service Aces
Season: 1 (vs. San Jose State, 9/8/17)
Career: 3 (vs. South Dakota, 10/14/16)

Digs
Season: 4 (Twice, last vs. UNI, 9/15/17)
Career: 8 (at Western Illinois, 11/12/16)

Blocks
Season: 6 (vs. UNI, 9/15/17)
Career: 10 (vs. Murray State, 9/17/16)

#17 MACKENZIE HORKEY

Kills
Season: 17 (vs. Indiana State, 9/2/17)
Career: 27 (vs. Ball State, 9/2/16)

Assists
Season: 1
(3 times, last at Drake, 9/7/17)
Career: 3 (vs. Central Arkansas, 8/29/15)

Service Aces
Season: 1
(3 times, last vs. Indiana State, 9/1/17)
Career: 2
(5 times, last vs. Oral Roberts, 11/20/15)

Digs
Season: 17 (at Drake, 9/7/17)
Career: 20 (vs. IUPUI, 11/21/15)

Blocks
Season: 2
(Twice, last vs. South Dakota State, 9/22/17)
Career: 4
(Twice, last vs. Incarnate Word, 11/22/14)

#24 MEAGEN ROTH

Kills
Season: 15 (vs. Indiana State, 9/1/17)
Career: Same
(Twice, last vs. Indiana State, 9/1/17)

Assists
Season: 3
(Twice, last vs. Indiana State, 9/1/17)
Career: Same

Service Aces
Season: 2 (at Iowa, 9/1/17)
Career: 4 (at Western Illinois, 11/12/16)

Digs
Season: 14 (vs. Kansas State, 9/14/17)
Career: 19 (vs. Ball State, 9/2/16)

Blocks
Season: 2
(4 times, vs. South Dakota State, 9/22/17)
Career: 4 (at Western Illinois, 11/12/16)

#27 ELLIE BROWN

Kills
Season: ---
Career: 14 (vs. Oral Roberts, 11/6/16)

Assists
Season: ---
Career: 1
(6 times, last vs. North Dakota State, 10/16/16)

Service Aces
Season: ---
Career: ---

Digs
Season: ---
Career: 3 (at Oral Roberts, 10/2/16)

Blocks
Season: ---
Career: 8 (at Oral Roberts, 10/2/16)

2017 OMAHA PHOTO ROSTER



SYDNEY O'SHAUGHNESSY
S • Sr. • 5-8
Omaha, Neb.



KELLI NEE
S • Fr. • 5-8
Powhatan, Va.



ABBY BERGSTEN
OH • Jr. • 6-1
Council Bluffs, Iowa



CHLOE DOUSETTE
OH • So. • 6-2
St. Paul, Minn.



BELLA SADE
MB • Fr. • 6-2
Marion, Iowa



CLAIRE MOUNTJOY
L • Fr. • 5-5
Omaha, Neb.



ABIGAYLE MEYER
RS • Fr. • 6-2
Murdock, Neb.



JESSICA GDOWSKI
OH • So. • 6-1
Fremont, Neb.



ANNA BLASCHKO
MB • Fr. • 6-1
Shakopee, Minn.



DARIA TAYLOR
MB • So. • 6-2
Rock Island, Ill.



AMANDA CONLIN
MB • Sr. • 6-2
Glendale, Ariz.



MACKENZIE HORKEY
OH • Jr. • 5-9
Jordan, Minn.



MEAGEN ROTH
RS • So. • 6-0
Lincoln, Neb.



ELLIE BROWN
MB • So. • 6-1
Holdrege, Neb.



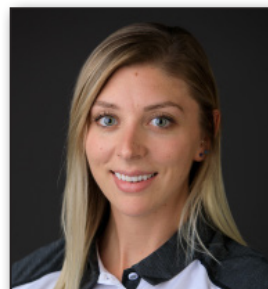
ROSE SHIRES
Head Coach
28th Year



ELENA PIETRO
Assistant Coach
3rd Year



MICAH RHODES
Assistant Coach
1st Year



GINA MANCUSO
Volunteer Assistant Coach
1st Year