



2016-17 Belmont Women's Basketball Game Notes



@BelmontWBB

2016 NCAA TOURNAMENT PARTICIPANT | 2016 OVC TOURNAMENT CHAMPIONS | #BRUINSOMETHINGSPECIAL

2016-17 Schedule/Results

(0-0, 0-0 OVC)

11/11	at Fort Wayne	10:00 a.m.
11/13	at [5/8] Louisville	1:00 p.m.
11/16	at Troy	12:00 p.m.
11/19	at UAB	2:00 p.m.
11/22	GREEN BAY	6:00 p.m.
11/25	1-Fresno State	2:00 p.m.
11/26	1-Loyola Marymount	5:30 p.m.
11/29	LIPSCOMB	5:00 p.m.
12/2	TREVECCA	11:00 a.m.
12/5	at Samford	6:00 p.m.
12/14	at Minnesota	12:00 p.m.
12/18	IUPUI	4:00 p.m.
12/22	at Presbyterian	11:00 a.m.
12/29	^*at Eastern Illinois	6:00 p.m.
12/31	^*at Austin Peay	12:00 p.m.
1/5	UT MARTIN (ESPNU)	4:00 p.m.
1/7	^*SEMO	5:00 p.m.
1/11	^*EASTERN KENTUCKY	6:00 p.m.
1/14	^*at Morehead St.	4:30 p.m.
1/18	^*at Jacksonville St.	7:00 p.m.
1/21	^*TENNESSEE TECH	1:00 p.m.
1/28	^*at Tennessee St.	5:30 p.m.
2/1	^*SIUE	7:00 p.m.
2/4	^*at Murray State	6:00 p.m.
2/8	^*JACKSONVILLE ST.	6:00 p.m.
2/11	^*at Tennessee Tech	5:30 p.m.
2/15	^*at Eastern Kentucky	6:00 p.m.
2/18	^*MOREHEAD ST.	6:00 p.m.
2/25	^*TENNESSEE ST.	3:00 p.m.
3/2-5	OVC Tournament	TBA

*Ohio Valley Conference games

Home games in bold and CAPS

Times listed are Central

^Coverage on OVC Digital Network

1- LMU Thanksgiving Classic Los Angeles, Calif.

Belmont Bruins (0-0, 0-0 OVC)

Friday, Nov. 11 | at Fort Wayne (0-0, 0-0 Summit League)

Sunday, Nov. 13 | at [5/8] Louisville (0-0, 0-0 ACC)

Belmont (0-0, 0-0 OVC)

Bruins *Based on 15-16 season

Head CoachCameron Newbauer
Record at school52-44 (4th season)
Scoring Leader Smith, 13.8
Assist Leader Maggard, 5.3
Rebounding Leader McCabe, 7.3



Fort Wayne (0-0, 0-0 SL)

Mastadons *Based on 15-16 season

Head CoachNiece Nelson
Record at school0-0 (1st season)
Scoring Leader Young, 6.8
Assist Leader Rinehart, 2.9
Rebounding Leader Rinehart, 3.9



[5/8] Louisville (0-0, 0-0 ACC)

Cardinals *Based on 15-16 season

Head CoachJeff Walz
Record at school234-85 (10th season)
Scoring LeaderHines-Allen, 17.6
Assist Leader Moore, 4.4
Rebounding LeaderHines-Allen, 8.4



SETTING THE SCENE

OVC Favorite Bruins Begin 16.17 Journey

Fresh off one of the best seasons in program history, the Belmont University women's basketball team kicks off its 2016-17 campaign this Friday, Nov. 11 when it travels to Fort Wayne. After matching up the Mastadons on Friday, the Bruins will travel to [5/8] Louisville for a Sunday afternoon clash with the Cardinals of the ACC. Friday marks the first of four-straight road games to open the year for Belmont.

ATHLETIC MEDIA RELATIONS

WBB Contact: Sam Stolte

Email: samuel.stolte@pop.belmont.edu

Office Phone: 615-460-8023

Cell Phone: 618-971-7976

Web Page: BelmontBruins.com

Twitter: @BelmontWBB

Instagram: @BelmontWBB

No.	Name	Pos.	Ht.	Cl.	Hometown/ Last School	PPG	RPG	APG	Notes	*2015-16 stats
0	Kia Perry	G	5-5	SR	Gallatin, Tenn./Station Camp HS	0.0	0.0	0.0	Returning from injury	
3	Frankie Joubran	F	6-1	SR	Detroit, Mich./Goodrich HS	6.0	4.9	.5	741 points scored in career	
12	Sierra Jones	G	5-9	JR	Huntsville, Ala./Madison Academy	8.3	3.4	2.1	Started 16 games last year	
14	*Lauren Thompson	F	6-1	SR	Franklin, Tenn./Christ Presbyterian Academy	8.5	4.8	.9	.582 FG% last season	
21	Paris Lawson	G	5-9	R-FR	Murfreesboro, Tenn./Oakland HS	3.3	1.8	1.7	Returning from injured	
23	*Kylee Smith	F	5-11	R-JR	Alpharetta, Ga./Vanderbilt	13.8	5.8	3.5	Preseason All-OVC Selection	
24	*Jenny Roy	F	5-11	SO	Brentwood, Tenn./Brentwood HS	6.2	4.6	2.1	Started 16 games last year	
30	Ellie Harmeyer	F	6-0	SO	Kenosha, Wisc./Shoreland Lutheran	6.4	4.2	.6	83% FT shooter last year	
31	Maura Muensterman	F	6-0	R-SO	Evansville, Ind./Indiana	0.0	0.0	0.0	Indiana University transfer	
33	*Darby Maggard	G	5-5	SO	Larwill, Ind./Canterbury HS	12.5	3.8	5.3	Preseason All-OVC Selection	
34	Hannah Harmeyer	G	5-8	R-JR	Kenosha, Wis./Wisc. Lutheran	0.0	0.0	0.0	Sister of Ellie Harmeyer	
50	*Sally McCabe	F	6-3	JR	Mt. Juliet, Tenn./Mt. Juliet HS	12.2	7.3	1.7	Preseason All-OVC Selection	
55	Maddie Wright	F	6-1	FR	Chattanooga, Tenn./Boyd-Buchanan HS	0.0	0.0	0.0	Lone true freshman on team	

*Indicates projected starter (2015-16 stats)

2016-17 Belmont Women's Basketball

GENERAL INFORMATION

Name of School:Belmont University
City:.....Nashville, Tenn.
Founded:.....1890
Enrollment:.....7,771
Nickname:.....Bruins
Colors:Navy, Red and White
Home Court:Curb Event Center
Capacity:5,000
Affiliation:.....NCAA Division I
Conference:.....Ohio Valley
President:Dr. Robert C. Fisher
Alma Mater, Year:Henderson State, 1970
Athletics Director:Scott Corley
Alma Mater, Year:Belmont, 1990
Assistant AD/SWA:Renee Schultz
Alma Mater, Year:Belmont, 2001
Athletic Department Phone: .615-460-6420
Ticket Office Phone:.....615-460-8062

PROGRAM HISTORY

First Year of Program:1968
Overall All-Time Record:855-501(.638)
NCAA-I Record (1997-pres): .316-217(.593)
Last Postseason Result:L/60-74
 2016 NCAA Tournament vs. No. 4 Michigan St.
Conference Regular Season Titles3
Conference Tournament Titles2
NCAA Tournament Appearances2
Postseason WNIT Appearances7
WBI Appearances1
NAIA Tournament Appearances4

MEDIA INFO

WBB Contact: Sam Stolte
Email: samuel.stolte@pop.belmont.edu
Phone (C): 618-971-7976
Website: BelmontBruins.com
Twitter:twitter.com/BelmontWBB
Instagram:instagram.com/BelmontWBB
Press Row Phone:615-460-8554

COACHING STAFF

Head Coach:.....Cameron Newbauer
Alma Mater, Year: Fort Wayne, 2001
Record at Belmont (Years): 52-44, 4th year
Overall Record (Years):.....Same
Newbauer's Phone:615-460-6264
Assistant Coaches (Alma Mater, Year)
 Lindy La Rocque (Stanford, 2012)
 Jamey Givens (Florida State, 2008)
 Amy Malo (Vanderbilt, 2009)
Graduate Assistant: Scott Schmelzer
 (Butler, 2013)
Athletic Trainer: Jeremy Tisdale



11 of BU's 12 home games will be streamed live on the OVC Digital Network (Jan. 5 vs. UT Martin will be broadcast nationally on ESPNU). All nine conference road games will be appear on OVC DN as well.

Bruins Voted OVC Preseason No.1

The Belmont University women's basketball team has been selected as the overall Ohio Valley Conference champion, as the league office unveiled its 2016-17 Women's Basketball Predicted Order of Finish at OVC Basketball Media Day on Oct. 26. Off the heels of its first NCAA Tournament berth since 2007, Belmont received 21 of the 24 first place votes. UT Martin, last season's regular season champ, received one first place vote while Eastern Kentucky registered two as the Skyhawks and Colonels finished second and third, respectively in the preseason poll. Three Bruins earned Preseason All-OVC nods as Darby Maggard (Larwill, Ind.), Sally McCabe (Mt. Juliet, Tenn.) and Kylee Smith (Alpharetta, Ga.) all garnered the honor. Belmont was the only program to feature three Preseason honorees and one of just two squads to boast more than one player on the 10 player list. Belmont was also tabbed as the overall OVC champion in the media poll released Oct. 21 and O'Bannon and Murray State's Ke'Shunan James were tabbed Preseason Co-Players of the Year in the poll voted on by 14 media members.

Bruins Earn Preseason Top 25 Votes

For the first time in program history, the Belmont University women's basketball team has received votes in the Associated Press Preseason Top 25, as this season's first poll was published Nov. 1. Belmont received four votes which is the most its garnered in program history. Since rising to the Division I ranks in 1997, Belmont has received votes in national polls three times including last season's votes in the AP Top 25 poll in early March. Last season's votes were the program's first since late January of 2007 when the Bruins appeared in the USA Today Coaches Poll.

Bruins Earn Spot on espnW Preseason Mid-major Poll

The Bruins came in at No. 7 in the espnW Preseason Mid-Major Poll which was published on Nov. 3. South Dakota State was the preseason No. 1 while Western Kentucky checked in at No. 2. Green Bay, who Belmont will host in Nashville on Nov. 22, was pegged at No. 5.

Bruins Return Core in 16-17

Belmont returns all five starters from a season ago, including its top nine scorers along with 98% of its scoring, 98% of its rebounding and 97% of its assists from last season's team.

Fort Wayne Series History

Belmont leads the all-time series with Fort Wayne by a tally of 2-0. The last meeting occurred back in the 2006-07 season, when Bruins held on for a 79-74 victory in Nashville.

Fort Wayne Connection

When Belmont takes the court on Friday it will be a special moment for both Belmont head coach Cameron Newbauer and sophomore guard Darby Maggard as each have ties back to Fort Wayne. Newbauer, a 2001 graduate of Fort Wayne (formerly referred to as IPFW), expects to have many friends and family in attendance including his grandmother. Maggard attended Fort Wayne Canterbury HS where she was named Indiana Miss Basketball Runner-up and a McDonald's All-America nominee.

BU..... Inside the Matchup FW
Based on 2015-16 stats

24-9.....	Overall Record.....	7-23
74.7.....	Scoring Offense.....	65.5
63.6.....	Scoring Defense	70.6
+11.1.....	Scoring Margin.....	-5.1
43.3.....	Rebounding.....	34.7
+10.2.....	Rebound Margin.....	-3.9
44.8.....	FG Percentage.....	37.9
38.3.....	FG Percentage Def.....	44.8
37.4.....	3FG Percentage	32.0
32.0.....	3FG Percentage Def.....	33.1
72.3.....	FT Percentage.....	70.2
17.3.....	Assists/Game	11.3
14.3.....	Turnovers/Game.....	14.8
4.8.....	Steals/Game.....	9.3
3.3.....	Blocks/Game.....	1.9

Fort Wayne Focus

Fort Wayne returns three starters and six letterwinners from last season's 7-23 squad. The Mastadons were picked to finish ninth in the Summit this season.

2016-17 OVC Standings

SCHOOL	OVC	OVERALL
UT Martin	0-0	0-0
Belmont	0-0	0-0
SIUE	0-0	0-0
Eastern Kentucky	0-0	0-0
Southeast Missouri	0-0	0-0
Murray State	0-0	0-0
Austin Peay	0-0	0-0
Tennessee State	0-0	0-0
Tennessee Tech	0-0	0-0
Jacksonville State	0-0	0-0
Morehead State	0-0	0-0
Eastern Illinois	0-0	0-0

Belmont Bruins Alphabetical Roster

<u>No.</u>	<u>Name</u>	<u>Pos.</u>	<u>Ht.</u>	<u>Cl.</u>	<u>Hometown/Last School</u>	<u>Major</u>
30	Ellie Harmeyer	F	6-0	SO	Kenosha, Wisc./Shoreland Lutheran	Nursing
34	Hannah Harmeyer	G	5-8	R-SO	Kenosha, Wisc./Wisc. Lutheran College	Nursing
12	Sierra Jones	G	5-9	JR	Huntsville, Ala./Madison Academy	Mathematics
3	Frankie Joubran	F	6-1	SR	Goodrich, Mich./Goodrich HS	Public Relations
21	Paris Lawson	G	5-9	R-FR	Murfreesboro, Tenn./Oakland HS	Mass Comm.
33	Darby Maggard	G	5-5	SO	Larwill, Ind./Canterbury HS	Psychology
50	Sally McCabe	C	6-3	JR	Mt. Juliet, Tenn./Mt. Juliet HS	Psychology
31	Maura Muensterman	G	6-0	R-SO	Evansville, Ind./Indiana	Marketing
0	Kia Perry	G	5-5	SR	Gallatin, Tenn./Station Camp HS	Exercise Science
24	Jenny Roy	F	5-11	SO	Brentwood, Tenn./Brentwood HS	Marketing
23	Kylee Smith	F	5-11	R-JR	Alpharetta, Ga./Vanderbilt	Business Admin.
14	Lauren Thompson	F	6-1	SR	Franklin, Tenn./Christ Presbyterian	Marketing
55	Maddie Wright	F	6-1	FR	Chattanooga, Tenn./Boyd-Buchanan HS	Nursing



Head Coach: Cameron Newbauer (Fort Wayne, 2001)

Assistant Coaches:

Lindy La Rocque (Stanford, 2012)

Jamey Givens (Florida State, 2008)

Amy Malo (Vanderbilt, 2009)



Pronunciation Guide

Frankie Joubran Juh-BRAHN
Maura Muensterman Mawr-ruh MIN-ster-man
Kia Perry KEY-ah
Kylee Smith KY-lee

Class By Class Breakdown

Seniors(3): Joubran, Perry, Thompson

Juniors (3): Jones, McCabe, Smith (RS)

Sophomores (5): E. Harmeyer, H. Harmeyer (RS), Maggard, Muensterman (RS)

Freshmen (2): Paris Lawson (RS), Maddie Wright



FRONT ROW (LEFT TO RIGHT) #14 LAUREN THOMPSON, #30 ELLIE HARMeyer, #3 FRANKIE JOUBRAN, #50 SALLY MCCABE, #21 PARIS LAWSON AND #55 MADDIE WRIGHT

BACK ROW (LEFT TO RIGHT) #12 SIERRA JONES, #23 KYLEE SMITH, #34 HANNAH HARMeyer, #0 KIA PERRY, #33 DARBY MAGGARD, #24 JENNY ROY AND #31 MAURA MUENSTERMAN

Bruins on the Map

Alabama (1): Sierra Jones

Georgia (1): Kylee Smith

Indiana (2): Maura Muensterman, Darby Maggard

Michigan (1): Frankie Joubran

Tennessee (6): Paris Lawson, Sally McCabe, Kia Perry, Jenny Roy, Lauren Thompson, Maddie Wright

Wisconsin (2): Ellie Harmyer, Hannah Harmyer

The Bruins' Record When...

Scoring 80+	0-0
Scoring 70-79	0-0
Scoring 60-69	0-0
Scoring fewer than 60	0-0
Opponent scores 80+	0-0
Opponent scores 70-79	0-0
Opponent scores 60-69	0-0
Opponent scores less than 60	0-0
Outrebounding opponent	0-0
Outrebounded by opponent	0-0
Rebounds Even	0-0
Shooting 50% or better	0-0
Shooting 40%-50%	0-0
Shooting less than 40%	0-0
Opponent shoots at least 50%	0-0
Opponents shooting 40%-50%	0-0
Opponent shoots less than 40%	0-0
Making 7 or more three-pointers	0-0
Making 6 or less three-pointers	0-0
Opponent makes 7 threes or more	0-0
Opponent makes 6 or less threes	0-0
Leading at halftime	0-0
Trailing at halftime	0-0
Tied at halftime	0-0
Game goes into overtime	0-0
Leading with five to play	0-0
Trailing with five to play	0-0
Tied with five to play	0-0
Leading with one to play	0-0
Trailing with one to play	0-0
Tied with one to play	0-0
3 or less players score in double figure	0-0
4 players score in double figures	0-0
5+ players score in double figures	0-0
Forcing 20+ turnovers	0-0
Forcing less than 20 turnovers	0-0
Margin is five points or less	0-0
Margin is 6-10 points	0-0
Margin is 11-15	0-0
Margin is 16-20	0-0
Margin is 21+	0-0

Belmont's Record On:

Monday	0-0
Tuesday	0-0
Wednesday	0-0
Thursday	0-0
Friday	0-0
Saturday	0-0
Sunday	0-0
November	0-0
December	0-0
January	0-0
February	0-0
March	0-0

**The Big Three**

Darby Maggard, Sally McCabe and Kylee Smith were all named All-OVC a season ago and subsequently earned Preseason All-OVC honors this season. After a stellar rookie campaign **Maggard** earned OVC Freshman of the Year honors and was named All-OVC. The freshman floor general was ranked top 50 nationally in seven statistical categories and ranked second in the conference in assists, second in three-pointers made per game and second in assist to turnover ratio. The sharpshooter was Belmont's second leading scorer at 12.5 per game as she started all 33 contests and led the team in minutes played. **McCabe**, the reigning OVC Defensive Player of the Year and 2015-16 All-OVC honoree, put together a solid sophomore season averaging 12.2 points per game, 7.3 rebounds per game while blocking a team-high 59 shots. The Mt. Juliet native was a driving force down the stretch run of the season for Belmont as she was named OVC Tournament MVP and helped lead the team to the largest margin of victory in OVC Tournament history with its 32-point win over Eastern Kentucky to clinch an NCAA berth. **Smith** averaged a team-best 13.8 points per game in 2015-16, earning All-OVC honors along with All-Newcomer status. The Vanderbilt transfer made an immediate impact as her 152 field goals last season were the fifth most in Belmont's NCAA Division I history and her 455 points scored were the fourth most in Belmont's NCAA Division I history.

Back in Louisville

Before joining Belmont, Coach Newbauer served as an assistant coach at the University of Louisville, where he helped the Cardinals to a 29-9 record during the 2012-13 campaign. Earning an NCAA Tournament No. 5 seed that season, Louisville won five consecutive games – including four over nationally-ranked opponents in Purdue, California, Tennessee, and consensus No. 1 Baylor – to reach the National Championship game. Not only did the Cardinals become the first-ever No. 5 seed or higher to win a National Semifinal, it marked Louisville's second National Championship game appearance in five years.

Smith Named OVC Scholar Athlete

Belmont women's basketball student-athlete Kylee Smith was selected as one of the six individuals to receive the Ohio Valley Conference's Scholar-Athlete of the Year Award for 2016-17, the league office announced Oct. 19. Smith became just the third female and the fifth overall Belmont student-athlete to garner the honor. Awarded each fall (but based on the prior year's achievements), the OVC Scholar-Athlete Award is the highest individual honor that can be earned by OVC student-athletes and it is given annually to three men and three women of junior or senior status who have accomplishments in both the classroom and athletic arena, as well as leadership qualities. Smith is the first women's basketball player to garner the award in Belmont's history. Smith is the fifth Belmont student-athlete to earn the OVC Scholar-Athlete Award. To be eligible, honorees must have at least a 3.25 GPA and conduct themselves in a manner which has brought credit to the student-athlete, his or her institution, intercollegiate athletics and the Ohio Valley Conference.

Academic Excellence

Belmont earned the sixth-best team GPA in all of NCAA Division I (3.591) a season ago. The Bruins had the highest team GPA of any team to qualify for the 2016 NCAA Women's Basketball Tournament and was one of only four NCAA Division I programs to be named to the WBCA Honor Roll while earning a bid to the NCAA Tournament (DePaul, Green Bay, St. Bonaventure).

2016-17 OVC Women's Basketball**Predicted Order of Finish**

1. Belmont (21 first-place votes) 241
2. UT Martin (One first-place vote) 220
3. EKU (Two first-place votes) 190
4. SIUE 160
5. Murray State 146
5. Southeast Missouri 146
7. Tennessee State 138
8. Jacksonville State 90
9. Austin Peay 82
10. Morehead State 75
11. Tennessee Tech 70
12. Eastern Illinois 26

Last Time Out | 3/18/2016 | No. 13 Belmont vs. No. 4 Michigan State

Giving a gallant effort in the program's first NCAA Tournament game in nine years, the 13th seeded Belmont women's basketball team fell to fourth seeded Michigan State 74-60 in a NCAA First Round game played Friday afternoon at the Humphrey Coliseum in Starkville, Mississippi. Belmont (24-9) saw two players in double-digit scoring as junior Frankie Joubran (Detroit, Mich.) led with 17 and redshirt sophomore Kylee Smith (Alpharetta, Ga.) posted 16. Freshman Ellie Harmeyer (Kenosha, Wisc.) went 2-for-3 from three on her way to nine points in the game. Freshman Darby Maggard (Larwill, Ind.) put up eight. Belmont showed no signs of awe on the game's biggest stage, matching the Spartans' toughness and execution and standing toe to toe every step of the way. The first half saw the Spartans take leads of eight points in both periods. However, the Bruins closed the gap each time and went to halftime down 34-30. Kylee Smith and Frankie Joubran each led Belmont with nine points. Belmont cut the lead to three at the end of the third quarter but an unfortunate foul called at the buzzer led to Jasmine Hines' two free throws which gave the Spartans 52-47 lead. The start of the fourth saw Michigan State go on a 10-0 run at extend their lead to 15 at 62-47 at 8:38. Belmont could never overcome that MSU run and fell to Spartans by 15.

Belmont vs Michigan State
03/18/16 11:05 a.m. at Starkville, Miss. (Humphrey Coliseum)

Belmont 60 • 24-9

#	Player		Total	3-Pr		Rebounds			PF	TP	A		TO	Blk	Stl	Min
			FG-FGA	FG-FGA	FT-FTA	Off	Def	Tot								
14	THOMPSON, Lauren	f	1-2	0-0	0-0	0	1	1	1	2	0	0	1	0	0	15
24	ROY, Jenny	f	1-6	1-2	0-0	3	6	9	3	3	0	1	0	0	0	34
50	MCCABE, Sally	o	0-8	0-2	0-0	1	1	2	3	0	4	0	1	0	0	21
23	SMITH, Kylee	o	7-16	1-7	1-2	0	2	2	1	16	3	2	0	2	0	36
33	MAGGARD, Darby	o	3-8	1-3	1-1	0	2	2	0	8	4	3	0	2	0	36
03	JOUBRAN, Frankie	o	7-11	0-0	3-5	1	4	5	0	17	0	0	0	0	0	25
05	BLEVINS, Madison	o	0-0	0-0	0-0	0	0	0	0	0	0	0	0	0	0	2
12	JONES, Sierra	o	1-1	1-1	2-2	0	2	2	1	5	0	1	0	0	0	11
15	RCSS, Sam	o	0-0	0-0	0-0	0	1	1	0	0	0	0	0	0	0	2
22	COHLMAYER, Natalie	o	0-0	0-0	0-0	0	0	0	0	0	0	0	0	0	0	2
30	HARMEYER, Ellie	o	2-4	2-3	3-4	0	3	3	3	9	1	2	0	0	0	16
Team						2			5							
Totals			22-56	6-18	10-14	7	25	32	12	60	12	9	2	4	0	200
1st FG %:			6-13	38.0%	2nd FG %:	6-15	40.0%	4th FG %:	6-13	46.2%	Game:		22-56	39.3%	Deadball	
3rd FG %:			2-4	50.0%	5th FG %:	1-3	33.3%	6th FG %:	2-4	50.0%	7-10		33.3%	Rebounds		3
FT %:			0-0	0.0%	6th FT %:	1-2	50.0%									

Michigan State 74 • 25-8

#	Player		Total	3-Pr		Rebounds			PF	TP	A		TO	Blk	Stl	Min
			FG-FGA	FG-FGA	FT-FTA	Off	Def	Tot								
23	Powers, Aerial	f	11-21	4-7	1-3	2	7	9	1	27	4	1	1	2	0	38
45	Taylor, Aiyah	f	1-5	0-0	0-0	2	1	3	1	2	1	2	0	0	0	16
04	Hines, Jasmine	o	9-12	0-0	6-7	5	2	7	3	24	0	3	1	1	0	31
01	Jankoska, Tati	o	3-9	1-5	0-0	0	3	3	3	7	1	1	1	2	0	23
10	Agee, Brandais	o	3-7	0-1	0-0	0	6	6	2	6	1	0	0	0	0	27
02	Miller, Cara	o	0-1	0-0	0-0	0	0	0	0	0	0	0	0	0	0	2
13	Green, Morgan	o	3-6	0-0	0-0	0	2	2	3	6	1	2	0	0	0	34
21	Vesela, Hana	o	0-0	0-0	0-0	0	0	0	0	0	0	0	0	0	0	2
24	Gussert, Lexi	o	0-0	0-0	0-0	0	0	0	0	0	0	0	0	0	0	2
33	Allen, Jenna	o	1-5	0-0	0-0	1	6	7	1	2	2	0	0	0	0	20
55	Johnson, Kennedy	o	0-0	0-0	0-0	0	0	0	1	0	0	1	0	0	0	5
Team						2			2							
Totals			31-66	5-13	7-10	12	27	39	15	74	10	10	3	5	0	200
1st FG %:			8-16	50.0%	2nd FG %:	8-16	50.0%	4th FG %:	8-16	50.0%	Game:		31-66	47.0%	Deadball	
3rd FG %:			1-4	25.0%	5th FG %:	0-1	0.0%	6th FG %:	0-1	0.0%	7-10		70.0%	Rebounds		4
FT %:			0-0	0.0%	6th FT %:	1-1	100.0%									

Officials: Brian Hill, Jack Jones, Melissa Brooks
Technical fouls: Belmont-None, Michigan State-None.
Attendance:
Atlanta official John Fletcher

Score by period	1st	2nd	3rd	4th	Total
Belmont	17	13	17	13	60
Michigan State	20	14	18	22	74

2016-17 Starting Lineup Game-By-Game

Date	Opponent	Score	Starting 5	Leading Scorer	Most Rebounds
11/11	Fort Wayne				
11/13	[5/8] Louisville				
11/16	Troy				
11/19	UAB				
11/22	GREEN BAY				
11/25	Fresno State				
11/26	Loyola Marymount				
11/29	LIPSCOMB				
12/2	Trevecca				
12/5	Samford				
12/14	Minnesota				
12/18	IUPUI				
12/22	Presbyterian				
12/29	Eastern Illinois				
12/31	Austin Peay				
1/5	UT MARTIN				
1/7	SEMO				
1/11	EKU				
1/14	Morehead State				
1/18	Jacksonville State				
1/21	TENNESSEE TECH				
1/28	Tennessee State				
2/1	SIUE				
2/4	Murray State				
2/8	JACKSONVILLE STATE				
2/11	Tennessee Tech				
2/15	EKU				
2/18	MOREHEAD STATE				
2/25	TENNESSEE STATE				



Newbauer by the Numbers

2013-14: 14-18, 10-6
2014-15: 14-17, 11-7
2015-16: 24-9, 13-3

2016-17 Preseason All-OVC Team

Jalen O'Bannon,
Eastern Kentucky*%

Ke'Shunan James,
Murray State*

Kylee Smith,
Belmont*%

Jayda Johnson,
Tennessee State*

Sally McCabe,
Belmont*

Darby Maggard,
Belmont*%

Jessy Ward, UT
Martin#

Bri Mitchell,
Southeast Missouri#

Brianna McQueen,
Morehead State#%

I'mani Davis,
Tennessee State#

**Preseason OVC
Player of the Year:**
Jalen O'Bannon,
Eastern Kentucky

Championship Rout

Last March, Belmont's 32-point victory (95-63) over ECU was the largest margin in OVC Championship game history.

Back in the Dance

Belmont's NCAA Tournament berth last season was its first since 2007.

Home Court Advantage

The Bruins were a perfect 13-0 at the Curb Event Center a season ago.

Belmont in the National Ranks

Belmont ranked Top 50 nationally in a staggering 16 statistical categories, including 12th in assists, per game and three-point field goal percentage, 14th in rebound margin, 27th in scoring offense and 30th in scoring margin.

Spreading the Wealth

In 2015-16 five players averaged at least eight points per game and BU produced seven different leading scorers on the season.

Road Warriors

Belmont begins its 2016-17 campaign with four-straight road games. The Bruins compiled an 8-8 mark in true road games a season ago.

Ferocious Finish

Belmont won 16 of its final 17 Ohio Valley Conference games, including an electrifying three-game run in the 2016 OVC Tournament.

TV Time

Belmont will play three nationally televised games this season, in addition to all of its conference games that will be streamed live on the OVC Digital Network. Belmont's Nov. 13 matchup at Louisville will be featured on the ACC Network Extra, the Bruins Dec. 14 contest at Minnesota will be broadcast on BTN Plus and Belmont's Jan. 5 matchup vs. UT Martin will be broadcast nationally on ESPNU.

Hoosier Homecoming

Then freshman guard Darby Maggard dazzled in her return to her home state of Indiana at IUPUI last season. The Larwill, Ind. native scored a team-high 16 points, added seven rebounds and snatched three steals. Maggard knocked down six field goals and made several highlight plays in the hard-fought loss.

Offensive Explosion

BU's 102 points against Troy last season were the most the program has scored since 1994-95, and the most it has scored in the Division I era.

Underclassmen Uprising

Underclassmen combined to score 82.6 % of the Bruins' points and logged 79.2 % of the total minutes last season.

Crushing it in Conference

In each of Cameron Newbauer's first three seasons at the helm at Belmont, his teams have progressed throughout the season and have played great basketball during the conference season. Newbauer's Bruins have compiled 10-6, 11-7 and 13-3 records in his first three seasons, respectively. Newbauer's winning percentage in OVC play entering this season is .680.

Young Guns

With an average of 28, the Belmont assistant coaching staff features a young, vibrant and up and coming mix of individuals with impressive backgrounds. Lindy La Rocque, Jamey Givens, Amy Malo and graduate assistant Scott Schmelzer combine to form a dynamic support staff for Coach Newbauer.



Cameron Newbauer

Head Coach

Fourth Season

Record at Belmont: 52-44

One of the fastest rising stars in the coaching ranks, Cameron Newbauer became the fourth women's head coach in Belmont women's basketball history in May of 2013.

Newbauer had an impressive first season at the helm of the Bruins, helping the team to return to the

postseason for the first time since 2007, en route to becoming the first Belmont coach to take a team into the postseason in their first year leading the program. BU was the surprise of the Ohio Valley Conference Tournament, closing the regular season winning seven of their last nine contests to finish with a 10-6 mark, snagging the No. 2 seed. Belmont advanced to the finals of any conference tournament for the first time since 2007 and placed a pair on the All-Tournament Team (Katie Carroll and Jordyn Luffman-Hartsfield), the first to receive the honor since the Bruins joined the conference. Two Bruins also received postseason All-Conference honors (Jordyn Luffman-Hartsfield, First Team, and Taylor Mills, All-Newcomer), another program first. At the end of his successful first season as head coach, Newbauer was invited to speak at the highly regarded Nike Villa 7 Consortium in Portland, Ore.

Year two saw the Newbauer-led Bruins return to the OVC Tournament after posting another 10 win conference season to earn the No. 4 seed.

The 2015-16 campaign, Newbauer's third season at the helm, turned out to be one best in program history as he directed the Bruin program to a 24-9 record this past season, which included an OVC Championship, a program-best No. 13 seed in the 2016 NCAA Women's Basketball Tournament, the program's first victory over an Atlantic Coast Conference opponent (Wake Forest) in a decade, and national Top 25 poll votes for the first time in program history. It was a truly historic campaign for Belmont women's basketball, the Bruins ranked Top 50 nationally in a staggering 16 statistical categories, including 12th in assists per game and three-point field goal percentage, 14th in rebound margin, 27th in scoring offense and 30th in scoring margin.

In addition to the landmark victory at Wake Forest, Belmont won 16 of its final 17 Ohio Valley Conference games, including an electrifying three-game run in the 2016 OVC Tournament. The Bruins received rave reviews, and provided stern competition for No. 4 seed and nationally-ranked Michigan State - which featured eventual No. 5 WNBA selection Aerial Powers - in the first round of the NCAA Tournament.

Belmont sported three First Team All-OVC selections in 2015-16 - OVC Tournament Most Valuable Player and Defensive Player of the Year Sally McCabe (Mt. Juliet, Tenn.), OVC Freshman of the Year Darby Maggard (Larwill, Ind.), and OVC Newcomer Team honoree Kylee Smith (Alpharetta, Ga.).

In the classroom, the Bruins have returned to their legacy of excellence. Under Newbauer's tutelage, BU has returned to the prestigious Women's Basketball Coaches Association (WBCA) Academic Top-25 team honor roll, after a nine season absence. In Newbauer's three seasons at the helm, the Bruins have garnered three-straight WBCA Academic Top 25 Honor Roll finishes, ranking 18th, 15th and sixth, respectively. For perspective, only five NCAA Division I programs have ranked 18th or higher each of the last three seasons. Belmont women's

basketball has now received the WBCA Academic Top 25 award eight times. In addition, Belmont sports the highest mark of any team to qualify for the 2016 NCAA Women's Basketball Tournament, and was one of only four NCAA Division I programs to be named to the Honor Roll while earning a bid to the NCAA Tournament (DePaul, Green Bay, St. Bonaventure).

One of the largest feathers in Newbauer's cap is the program's commitment to community service. The Bruins undertake a series of service projects every month throughout the academic calendar and have been recognized by the NCAA for their efforts. In August of 2015, Newbauer and program founder, Betty Wiseman, partnered with Brentwood Baptist Church and took the 2015-16 team to Rio de Janeiro, Brazil, for the ultimate service opportunity. Over the 10 days, BU shared the gospel and their love of basketball with impoverished children in several favelas (Brazilian slums).

Before joining Belmont, Newbauer was most recently an assistant coach at the University of Louisville, where he helped the Cardinals to a 29-9 record during the 2012-13 campaign. Earning an NCAA Tournament No. 5 seed that season, Louisville won five consecutive games - including four over nationally-ranked opponents in Purdue, California, Tennessee, and consensus No. 1 Baylor - to reach the National Championship game. Not only did the Cardinals become the first-ever No. 5 seed or higher to win a National Semifinal, it marked Louisville's second National Championship game appearance in five years. Newbauer contributed to every facet of the Cardinals' program, from recruiting and scouting to on-court instruction and player development.

Prior to joining the Louisville staff, Newbauer spent five seasons as an assistant coach at the University of Georgia, proving to be an integral part of the Lady Bulldogs' brain trust under Hall of Fame head coach Andy Landers. Georgia made five straight NCAA Tournament appearances during Newbauer's time in Athens, including consecutive Sweet 16 appearances in 2010 and 2011. In addition to his service to the Georgia women's basketball program, Newbauer served two stints for the Bulldog men's basketball program; first in 2003-04 as a graduate manager and later from 2005-07 as director of basketball operations.

Postseason success also found Newbauer at Siena College. Serving first as director of basketball operations (2001-03) and later assistant coach (2004-05) under Rob Lanier, Newbauer helped the Saints cut down the nets at the 2002 MAAC Tournament and claim victory in an opening round game in the 2002 NCAA Tournament.

Newbauer has also contributed to USA Basketball, serving as an administrative assistant/manager for the U.S. National Team participating in the 2003 Junior World Championships in Greece. A veteran of several highly-regarded camps, Newbauer has worked Five Star, Eastern Invitational, Duke University and the University of Texas.

A native of Fort Wayne, Ind., Newbauer played one season of basketball at Madonna College, before transferring to IPFW. He earned a bachelor's degree in elementary education in 2001, serving as a student assistant on the basketball staff as a senior. Newbauer also spent time as a varsity coach at Leo High School while completing his undergraduate studies.

Newbauer earned a master's degree in recreation and leisure studies from the University of Georgia in 2009.

He married the former Sarah Millender in 2011 and the couple has two little girls, Chloe and Millie.

Belmont Bruins Basketball Radio/TV Roster



#0 Kia Perry
G 5-5 SR
Gallatin, Tenn.



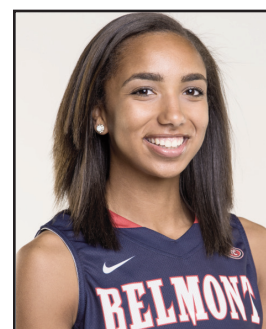
#3 Frankie Joubran
F 6-1 SR
Goodrich, Mich.



#12 Sierra Jones
G 5-9 JR
Huntsville, Ala.



#14 Lauren Thompson
F 6-1 SR
Franklin, Tenn.



#21 Paris Lawson
G 5-9 R-FR
Old Hickory, Tenn.



#23 Kylee Smith
F 5-11 R-JR
Alpharetta, Ga.



#24 Jenny Roy
F 5-11 SO
Brentwood, Tenn.



#30 Ellie Harmeyer
F 6-0 SO
Kenosha, Wisc.



#31 Maura Muensterman
G 6-0 R-SO
Evansville, Ind.



#33 Darby Maggard
G 5-5 SO
Larwill, Ind.



#34 Hannah Harmeyer
G 5-8 R-SO
Kenosha, Wisc.



#50 Sally McCabe
C 6-3 JR
Mt. Juliet, Tenn.



#55 Maddie Wright
F 6-1 FR
Chattanooga, Tenn.



Head Coach
Cameron Newbauer



Assistant Coach
Jamey Givens



Assistant Coach
Lindy La Rocque



Assistant Coach
Amy Malo



Graduate Assistant
Scott Schmelzer

Darby Maggard



SOPH. PG | 12.5 PPG | 5.3 APG | 1ST TEAM ALL-OVC | OVC FRESHMAN OF THE YEAR

NCAA RANKS WITH MAGGARD (15-16)

VICTORIES	24
3-PT FG%	12TH (.374)
ASSIST/TO RATIO	22ND (1.21)
FG%	26TH (.448)
SCORING OFFENSE	27TH (74.7)
SCORING MARGIN	30TH (+11.1)
W-L%	48TH (.727)
TURNOVERS/GM	65TH (14.3)
FT%	83RD (.723)

NCAA RANKS WITHOUT MAGGARD (14-15)

14
133RD (.321)
112TH (0.88)
154TH (.401)
208TH (62.7)
231ST (-3.0)
213TH (.452)
197TH (16.5)
292ND (.649)



Darby Does It

As a freshman, *Darby Maggard* led a Belmont program that won 24 games, earned a No. 13 seed in its first NCAA Tournament appearance since 2007, ranked Top 50 nationally in 16 statistical categories, won conference tournament games by a combined 74 points to claim the 2016 Ohio Valley Conference Women's Basketball Championship, and earned National Top 25 poll votes for the first time in a decade. After a stellar rookie campaign, the espnW Top 100 recruit, earned OVC Freshman of the Year honors and was named All-OVC. She was ranked top 50 nationally in seven statistical categories and within the OVC was second in assists, second in three-pointers made per game and second in assist to turnover ratio. Starting all 33 games as a true freshman, she led the team in minutes played at 1,152 and was second in scoring at 12.5 points per game.

Consider Maggard's impact when comparing the 2015-16 Belmont women's basketball to the season prior (w/ NCAA rank):

2015-16 Season Leaders

Double Digit Points

Sally McCabe	.24
Kylee Smith	.22
Darby Maggard	.21
Lauren Thompson	.15
Sierra Jones	.13
Jenny Roy	.9
Ellie Harmeyer	.8
Frankie Joubran	.6
Natalie Cohlmeier	.1

Double Digit Rebounds

Sally McCabe	.7
Kylee Smith	.4
Ellie Harmeyer	.2
Frankie Joubran	.1
Jenny Roy	.1

Double Digit Assists

Darby Maggard	.4
---------------	----

Double Doubles

Sally McCabe	.6
Kylee Smith	.4
Darby Maggard	.4
Ellie Harmeyer	.1
Frankie Joubran	.1

Games as Leading Scorer

Sally McCabe	.11
Kylee Smith	.8
Darby Maggard	.6
Lauren Thompson	.4
Sierra Jones	.2
Ellie Harmeyer	.1
Frankie Joubran	.1

Games Leading in Assists

Darby Maggard	.23
Kylee Smith	.8
Sierra Jones	.3
Jenny Roy	.2
Paris Lawson	.1
Sally McCabe	.2

Belmont's Record vs. Conferences in 16-17

ACC	.0-0
BIG 10	.0-0
Atlantic Sun	.0-0
Conference USA	.0-0
Horizon	.0-0
MAC	.0-0
MAAC	.0-0
Peach Belt	.0-0
SEC	.0-0
Southern	.0-0
Summit	.0-0
Sun Belt	.0-0
SWAC	.0-0

2016-17 Almanac:

Longest Winning Streak	.0
Longest Losing Streak	.0
Largest Home Crowd	.0-0
Average Home Crowd	.0-0
Most Points Scored	.0-0
Fewest Points Scored	.0-0
Most Points Allowed	.0-0
Fewest Points Allowed	.0-0
Average Points Scored	.0-0
Average Points Allowed	.0-0
Most Rebounds	.0-0
Most Assists	.0-0
Most Steals	.0-0
Most Blocks	.0-0
Average Turnovers	.0-0



Kia Perry
Senior • 5-5 • G • Gallatin,
Tenn. • Station Camp HS

- *Obsessed with the TV show Scandal, wants to be Olivia Pope
- * Has four siblings

As a Junior: Played in 27 games, earning one start ... Averaged 6.0 points per game and 4.9 rebounds ... Averaged 17.7 minutes per game ... Shot 53.5 percent from the field ... Second on the team in field goal percentage (.535) ... Second in rebounds per game (4.9) ... The Michigan native Joubran poured in a team-high 17 points in the Bruins NCAA Tournament loss to Michigan State ... 2015-16 OVC Commissioner's Honor Roll Honoree.

As a Sophomore: Named to the CollegeSportsMadness.com All-OVC Team ... Spent season nationally ranked in rebounds per game (77) and double doubles (top 100) ... In the OVC ranked second in total rebounds and defensive rebounds (6.4), third in field-goal percentage (.522), 12th in offensive rebounds, and 21st in scoring ... Led Belmont in rebounds, field goals made (131), and field-goal percentage ... Second on the team in free throws made (56), total points (319) and points per game ... Played in 29 contests, earning 22 starts ... Averaged 11 points and 8.8 rebounds per game ... Tallied 11 double doubles ... Reached double digits in scoring 19 times ... Netted six or more field goals on eight occasions ... Named to OVC Commissioner's Honor Roll.

As a Redshirt Freshman: Played in all 32 games, earning 26 starts ... Averaged 8.1 points and 7.7 rebounds per contest ... Led the Bruins in rebounds (245) and was second on the team in field goals (104), field-goal percentage (.468) ... Was third on the team in total points (259) ... Played a season-high 36 minutes in the WNIT at Indiana (3/20).

2012-13: After playing nine games, redshirted season due to injury.

Career-high (year)	Season-high
Pts. 5 vs. North Ala. (11/16/14)	--
Rebs. *2 at Denver (11/29)	--
Asst. 4 at IUPUI (11/9/13)	--
Blks. --	--
Stls. *1 vs. North Ala. (11/16/14)	--
FGs *2 vs. North Ala. (11/16/14)	--
FGAs 6 at Wake Forest (12/3/13)	--
3FGs 1 vs. North Ala. (11/16/14)	--
3FGA 3 vs. North Ala. (11/16/14)	--
FTs 2 at Tennessee Tech (2/1/14)	--
FTAs 4 at IUPUI (11/9/13)	--
Mins. 20 at Lipscomb (11/14/13)	--

2016-17 Belmont Women's Basketball



Frankie Joubran
Senior • 6-1 • F •
Goodrich, Mich. •
Goodrich HS

- *Uncle is partial owner of the Detroit Pistons
- *Can make a full court shot with a baseball

As a Junior: Played in 27 games, earning one start ... Averaged 6.0 points per game and 4.9 rebounds ... Averaged 17.7 minutes per game ... Shot 53.5 percent from the field ... Second on the team in field goal percentage (.535) ... Second in rebounds per game (4.9) ... The Michigan native Joubran poured in a team-high 17 points in the Bruins NCAA Tournament loss to Michigan State ... 2015-16 OVC Commissioner's Honor Roll Honoree.

As a Sophomore: Named to the CollegeSportsMadness.com All-OVC Team ... Spent season nationally ranked in rebounds per game (77) and double doubles (top 100) ... In the OVC ranked second in total rebounds and defensive rebounds (6.4), third in field-goal percentage (.522), 12th in offensive rebounds, and 21st in scoring ... Led Belmont in rebounds, field goals made (131), and field-goal percentage ... Averaged 11 points and 8.8 rebounds per game ... Tallied 11 double double ... Named to OVC Commissioner's Honor Roll.

As a Redshirt Freshman: Played in all 32 games, earning 26 starts ... Averaged 8.1 points and 7.7 rebounds per contest ... Led the Bruins in rebounds (245) and was second on the team in field goals (104), field-goal percentage (.468) ... Was third on the team in total points (259) ...

2012-13: After playing nine games, redshirted season due to injury.

#03 JOUBRAN, Frankie																				
Opponent	Date	us	uni	Total	pts	fg	3fg	ft	pts	reb	off	def	tot	ast	blk	stl	pts	reb	ast	
YOUNG-HARRIS	11/13/15	dnp	-	-	-	-	-	-	-	-	-	-	-	-	-	-	-	-	-	
UNB	11/15/15	19	1-6	.167	0-0	.000	2-4	.500	1	3	4	4.0	1	0	2	0	1	4	4.0	
at Ohio State	11/19/15	16	0-3	.000	0-0	.000	1-2	.500	2	3	5	4.5	1	0	3	0	0	1	2.5	
CSU	11/22/15	16	0-2	.000	0-0	.000	2-2	1.000	0	3	3	4.0	0	0	0	0	1	2	2.3	
at Albion A&M	11/24/15	dnp	-	-	-	-	-	-	-	-	-	-	-	-	-	-	-	-	-	
TROY	11/29/15	dnp	-	-	-	-	-	-	-	-	-	-	-	-	-	-	-	-	-	
at LIPSCOMB	12/02/15	dnp	-	-	-	-	-	-	-	-	-	-	-	-	-	-	-	-	-	
at Wake Forest	12/05/15	dnp	-	-	-	-	-	-	-	-	-	-	-	-	-	-	-	-	-	
at Chattanooga	12/06/15	10	3-7	.429	0-0	.000	0-0	.000	0	0	0	3.0	0	0	0	0	0	6	3.3	
at IUPUI	12/08/15	14	2-2	1.000	0-0	.000	1-1	1.000	1	3	4	3.2	1	0	1	0	0	5	3.6	
at Green Bay	12/22/15	23	5-7	.714	0-0	.000	0-3	.000	5	6	11	4.5	4	2	2	0	1	10	4.7	
at WKU	12/29/15	28	2-4	.500	0-0	.000	1-1	1.000	2	3	5	4.6	1	0	0	0	0	5	4.7	
at Southeast Missouri	12/31/15	19	0-2	.000	0-0	.000	1-2	.500	2	7	9	5.1	3	0	1	0	0	1	4.3	
at SIUE	01/05/16	14	2-2	1.000	0-0	.000	0-0	.000	0	3	3	4.3	2	1	0	0	0	4	4.2	
EASTERN ILLINOIS	01/09/16	16	5-7	.714	0-0	.000	0-0	.000	0	3	3	4.7	1	1	1	0	0	10	4.6	
MURRAY STATE	01/04/16	15	3-5	.600	1-1	1.000	0-0	.000	2	2	4	4.6	2	0	1	0	0	7	5.0	
AUSTIN PEAY	01/07/16	17	2-6	.333	0-0	.000	0-1	.000	4	2	6	4.8	3	1	1	0	0	4	4.9	
at Jacksonville State	02/06/16	9	1-3	.333	0-0	.000	0-0	.000	0	1	1	4.5	0	0	1	0	0	2	4.7	
TENNESSEE STATE	02/04/16	23	2-4	.500	0-0	.000	3-5	.600	1	2	3	4.4	2	3	2	0	3	7	4.9	
at Tennessee Tech	01/08/16	33	2-3	.667	0-0	.000	2-4	.500	5	5	10	4.7	2	0	2	1	1	6	4.9	
MOOREHEAD STATE	02/08/16	19	5-6	.833	0-0	.000	0-0	.000	3	3	6	4.8	3	0	1	0	1	10	5.3	
EASTERN KENTUCKY	02/06/16	17	1-4	.250	0-0	.000	2-4	.500	1	7	8	5.0	0	1	0	0	0	4	5.2	
JACKSONVILLE STATE	02/10/16	10	1-2	.500	0-0	.000	2-2	1.000	0	1	1	4.8	0	0	0	0	0	4	5.1	
at Morehead State	02/13/16	12	3-6	.500	0-0	.000	0-2	.000	0	1	1	4.6	2	2	0	0	0	6	5.2	
at UT Martin	02/15/16	14	2-3	.667	0-0	.000	0-0	.000	2	2	4	4.6	2	1	1	0	0	4	5.1	
TENNESSEE TECH	02/26/16	10	1-1	1.000	0-0	.000	0-0	.000	2	6	8	4.7	1	0	2	0	1	2	5.0	
at Eastern Kentucky	02/24/16	23	4-7	.571	0-0	.000	1-1	1.000	0	2	2	4.6	2	0	1	0	0	9	5.1	
at Tennessee State Lady T	02/24/16	18	4-5	.800	0-0	.000	2-3	.667	1	3	4	4.6	0	0	2	0	0	10	5.3	
at Tennessee State	03/02/16	27	4-7	.571	0-0	.000	1-1	1.000	1	6	7	4.7	1	1	1	0	0	9	5.5	
at SIUE	03/04/16	13	1-5	.200	0-0	.000	2-2	1.000	2	5	7	4.8	3	1	0	0	1	4	5.4	
at Eastern Kentucky	03/05/16	19	5-7	.714	0-0	.000	0-4	.000	1	8	9	4.9	1	0	1	1	0	10	5.6	
at Kennesaw State	03/07/16	25	7-11	.636	0-0	.000	3-5	.600	1	4	5	4.9	0	0	0	0	0	17	6.0	
Totals		1	479	68-127	.535	1-1	1.000	26-49	.531	39	94	133	4.9	36	15	27	2	10	163	6.0
Games played: 27																				
Minutes/game: 17.7																				
Assists/game: 6.0																				
Turnovers/game: 1.0																				
FG Pct: 53.5																				
Shots/game: 0.4																				
FT Pct: 53.1																				
Blocks/game: 0.1																				

Games played: 27
Minutes/game: 17.7
Points/game: 6.0
FG Pct: 53.5
3FG Pct: 100.0
FT Pct: 53.1

Rebounds/game: 4.9
Assists/game: 0.6
Turnovers/game: 1.0
Assist/turnover ratio: 0.6
Steals/game: 0.4
Blocks/game: 0.1

Career-high (year)	Season-high
Pts. 22 at Mercer (12/19/14)	--
Rebs. 17 vs. Murray St (1/13/14)	--
Asst. 4 vs. Jacksonville St (1/21/15)	--
Blks. *1 vs. EKU (3/5/16)	--
Stls. 3 vs. Tennessee St (1/23/16)	--
FGs 11 at Mercer (12/19/14)	--
FGAs 15 at Mercer (12/19/14)	--
3FGs *1 vs. Murray (1/14/16)	--
3FGA 3 at Ohio St (11/19/16)	--
FTs 8 at Tennessee Tech (2/1/14)	--
FTAs 9 at Tennessee Tech (2/1/14)	--
Mins. .35 at J'ville St (3/1/14)	--



Sierra Jones
Junior • 5-9 • G •
Huntsville, Ala. • Madison
HS

*Selected for the OVC
leadership summit last season

As a Sophomore: Appeared in all 33 games, and started BU's first 14 ... Averaged 8.3 points per game which was the fifth highest mark on the squad ... One of five Bruins to average at least eight points per game ... Fourth on the team with 67 assists ... One of six Bruins to shoot at least 75% from the charity stripe (79%) ... Contributed 13 double-digit scoring efforts including a season-high 18 points against Trevecca (12/8) ... Grabbed a season-high eight rebounds three times... 2015-16 OVC Commissioner's Honor Roll Honoree.

As a Freshman: Played in all 31 games, earning 13 starts ... Led the Bruins in made free throws and was second assists (8) and free-throw percentage (.763) ... In the OVC was ranked 13th in assists ... Averaged 8.4 points and 2.6 rebounds per game ... Named OVC Freshman of the Week on January 6 ... Scored 10 or more points on 12 occasions ... Perfect at the free-throw line 12 times ... Collected three or more assists 12 times ... Made collegiate debut at Vanderbilt (11/14), scoring seven points ... Earned first collegiate start at Louisville (11/20) ... Named to OVC Commissioner's Honor Roll.

#12 JONES, Sierra

Opponent	Date	pts	reb	ast	fg	3pt	ft	off	def	tot	avg	pts	reb	ast	fg	3pt	ft	off	def	tot	avg
YOU'NG HARRIS	11/7/15	24	2-8	250	1-5	.200	3-3	1.000	2	4	6	6.0	2	3	4	0	8	8.0			
UAB	11/15/15	32	6-12	500	5-8	.625	0-2	.000	0	3	3	4.5	2	5	4	1	0	17	12.5		
at Ohio State	11/19/15	18	0-10	800	0-3	.000	0-0	.000	2	0	2	3.7	4	0	5	0	0	8	8.3		
CSU	11/22/15	29	4-5	800	0-1	.000	0-0	.000	0	7	7	4.5	3	6	9	0	2	8	8.3		
at Abilene A&M	11/24/15	25	4-6	667	1-2	.500	1-1	1.000	1	3	2	4.0	1	3	3	0	2	10	8.6		
TRIOY	11/29/15	21	2-4	500	0-2	.000	4-8	.500	0	3	3	3.8	4	1	5	0	1	8	8.5		
at LIPSCOMB	12/02/15	26	0-7	800	0-6	.000	0-0	.000	1	5	6	4.1	3	5	4	0	1	0	7.3		
at Wake Forest	12/05/15	29	4-7	571	2-3	.667	2-2	1.000	0	5	5	4.3	4	2	4	0	2	12	7.9		
TREVECCA	12/08/15	34	6-13	462	3-9	.333	3-4	.750	4	2	6	4.4	2	7	2	2	0	18	9.0		
at Chattanooga	12/10/15	38	4-9	444	0-1	.000	0-0	.000	2	6	8	4.8	2	0	3	0	1	8	8.9		
at IUPIU	12/18/15	28	2-7	286	1-2	.500	0-0	.000	1	0	1	4.5	4	1	2	0	0	5	8.5		
at Green Bay	12/22/15	34	5-12	417	3-9	.333	2-3	.667	1	4	5	4.4	5	2	5	0	1	15	9.1		
at WKU	12/29/15	29	5-9	556	2-3	.667	5-5	1.000	0	3	3	4.5	5	3	3	0	1	17	9.7		
at Southeast Missouri	12/31/15	26	3-8	375	3-5	.600	2-2	1.000	0	1	1	4.1	4	2	4	0	0	11	9.8		
at SIUE	01/05/16	20	2-10	200	2-4	.250	2-3	.667	1	1	2	4.0	1	2	3	0	0	8	9.7		
EASTERN ILLINOIS	01/09/16	15	3-6	500	1-2	.500	1-2	.500	0	0	0	3.8	3	1	2	0	0	8	9.6		
KUORN AV STATE	01/14/16	26	2-7	286	0-2	.000	1-2	.500	0	4	4	3.8	2	1	3	0	2	5	9.3		
AUSTIN PEAY	01/16/16	10	1-4	250	0-2	.000	0-0	.000	0	1	1	3.6	2	0	1	0	0	2	8.9		
at Jacksonville State	01/20/16	15	0-4	800	0-2	.000	0-0	.000	1	0	1	3.5	0	0	0	0	1	0	8.4		
TENNESSEE STATE	01/24/16	25	7-12	553	1-2	.500	0-1	.000	0	2	2	3.4	2	1	3	0	0	15	8.3		
at Tennessee Tech	01/26/16	20	3-4	375	2-5	.400	4-4	1.000	2	4	6	3.5	2	1	2	0	0	12	8.9		
MOREHEAD STATE	02/03/16	23	4-10	400	0-6	.000	5-5	1.000	1	1	2	3.5	1	2	1	0	1	13	9.1		
EASTERN KENTUCKY	02/06/16	14	1-5	200	1-2	.500	2-3	.667	1	0	1	3.3	3	0	1	0	1	5	8.9		
JACKSONVILLE STATE	02/07/16	17	0-3	800	0-2	.000	4-5	.800	0	1	1	3.3	2	0	1	0	0	4	8.7		
at Morehead State	02/13/16	24	1-9	111	1-4	.250	4-8	1.000	1	4	5	3.3	3	3	2	0	1	11	8.8		
at UT Martin	02/15/16	15	1-4	250	0-2	.000	2-2	1.000	1	1	2	3.3	1	1	3	0	1	4	8.6		
TENNESSEE TECH	02/20/16	22	1-5	200	0-2	.000	2-5	.400	2	1	3	3.3	1	3	0	0	1	4	8.4		
at Eastern Kentucky	02/24/16	25	3-8	375	0-2	.000	4-4	1.000	1	7	8	3.4	1	3	1	0	1	10	8.5		
at Tennessee State Lady TI	02/28/16	26	3-9	333	0-4	.000	4-5	.800	0	1	1	3.3	3	2	3	0	1	10	8.6		
at Tennessee State	03/02/16	30	1-5	200	1-4	.250	3-4	.750	5	3	8	3.5	2	3	2	0	0	6	8.5		
at SIUE	03/04/16	14	2-2	1.000	1-1	1.000	2-2	1.000	0	1	1	3.4	2	1	3	0	1	7	8.4		
at Eastern Kentucky	03/08/16	18	1-4	250	1-1	1.000	5-5	1.000	1	2	3	3.4	2	1	0	1	0	8	8.4		
at Michigan State	03/10/16	11	1-1	1.000	1-1	1.000	2-2	1.000	0	2	2	3.4	1	0	1	0	0	5	8.3		
Totals		16	765	64-233	361	33-114	289	73-92	79.3	31	80	111	3.4	76	68	90	3	22	274	8.3	

Games played: 33
Minutes/game: 23.2
Points/game: 8.3
FG Pct: 36.1
3FG Pct: 28.9
FT Pct: 79.3

Rebounds/game: 3.4
Assists/game: 2.1
Turnovers/game: 2.7
Assist/turnover ratio: 0.8
Steals/game: 0.7
Blocks/game: 0.1

Career-high (year)	Season-high
Pts. 23 vs. Eastern Ky (2/25/14)	--
Rebs. *8 vs. Tennessee St (3/2/16)	--
Asst. 8 at Eastern Illinois (1/10/15)	--
Blks. 2 vs. Trevecca (12/8/15)	--
Stls. 3 at Cleveland St (12/16/14)	--
FGs *7 vs. Tennessee St (1/23/16)	--
FGAs 15 vs. Eastern Ky (2/25/14)	--
3FGs *5 vs. UAB (11/15/15)	--
3FGA *9 at Green Bay (12/22/16)	--
FTs 10 vs. Eastern Ky (2/25/14)	--
FTAs 10 vs. Eastern Ky (2/25/14)	--
Mins. 40 at Jacksonville St (2/11/14)	--



Lauren Thompson
Senior • 6-1 • F • Franklin,
Tenn. • Christ
Presbyterian HS

*Interned at Nike in Oregon lasts
summer

As a Junior: Started 32 of BU's 33 games, but appeared in all of them ... Belmont's fourth leading scorer at 8.5 points per game, one of five Bruins to average at least eight a game ... Belmont's fifth leading rebounder at a 4.8 clip ... Led the Bruins in field goal percentage at .582 ... Tallied double digit point totals in 15 games, her season high was 18 which came at Morehead State (2/13) ... Her .582 field goal percentage last season ranked her 10th all-time and third in Belmont's NCAA Division I history (1997 and on) ... 2015-16 OVC Commissioner's Honor Roll Honoree.

As a Sophomore: Made appearances in all 31 contests, earning 13 starts ... Second on the team in field-goal percentage (.486) ... Scored five or more points on 15 occasions ... Grabbed three or more rebounds 12 times ... Netted a season-high 16 points against Eastern Kentucky (2/25) ... Hit five field goals in OVC Tournament semifinals vs. UT Martin (3/6) ... Named to OVC Commissioner's Honor Roll.

As a Freshman: Played in all 32 games, earning 12 starts ... Averaged 6.7 points and 3.6 rebounds per outing ... Led the Bruins in blocks (17) and field-goal percentage (.500) ... Third on the team in offensive rebounds (58) ... Reached double digits in scoring nine times ... Named to OVC Commissioner's Honor Roll.

#14 THOMPSON, Lauren

Opponent	Date	pts	reb	ast	Total fg-r	3pt-r	Free throws ft-r	off	def	tot	avg	pts	reb	ast	fg-r	3pt-r	ft-r	off	def	tot	avg
YOU'NG HARRIS	11/7/15	25	4-8	500	0-1	.000	2-2	1.000	3	2	5	5.0	1	1	0	2	0	10	10.0		
UAB	11/15/15	31	3-5	600	0-0	.000	1-2	.500	1	5	6	5.5	2	3	2	2	0	7	8.5		
at Ohio State	11/19/15	23	2-3	667	0-0	.000	0-0	.000	2	1	3	4.7	1	2	0	1	0	4	7.0		
CSU	11/22/15	25	8-9	889	0-0	.000	0-0	.000	3	4	7	5.3	0	0	1	2	16	9.3			
at Abilene A&M	11/24/15	25	7-11	636	0-1	.000	0-0	.000	3	3	6	5.4	1	0	0	0	0	14	10.2		
TRIOY	11/29/15	30	2-6	333	0-1	.000	0-0	.000	1	1	2	4.8	0	2	3	0	0	4	9.2		
at LIPSCOMB	12/02/15	30	5-9	556	0-0	.000	0-0	.000	0	9	9	5.4	1	3	3	3	1	10	9.3		
at Wake Forest	12/05/15	32	7-12	583	0-1	.000	0-0	.000	4	2	6	5.5	2	1	0	0	1	14	9.9		
TREVECCA	12/08/15	27	6-8	750	0-0	.000	2-2	1.000	2	2	4	5.3	2	1	0	1	1	14	10.3		
at Chattanooga	12/10/15	32	2-6	333	0-0	.000	2-4	.500	2	0	2	5.0	2	0	3	0	0	6	9.9		
at IUPUI	12/18/15	25	3-7	429	0-1	.000	0-0	.000	3	1	4	4.9	2	0	1	0	1	6	9.5		
at Green Bay	12/22/15	28	0-1	800	0-0	.000	0-0	.000	1	2	3	4.8	1	1	1	0	1	0	8.8		
at WKU	12/29/15	16	0-1	800	0-0	.000	0-0	.000	0	2	2	4.5	0	1	1	0	0	8.1			
at Southeast Missouri	12/31/15	21	3-4	750	0-0	.000	0-0	.000	2	1	3	4.4	2	1	0	0	1	6	7.9		
at SIUE	01/05/16	18	4-8	500	0-0	.000	0-0	.000	2	4	6	4.5	1	0	0	0	0	8	7.9		
EASTERN ILLINOIS	01/09/16	26	4-6	667	0-0	.000	2-4	.500	0	1	1	4.3	3	0	1	0	0	10	8.1		
KUORN AV STATE	01/14/16	21	6-7	857	0-0	.000	0-0	.000	1	3	4	4.3	0	2	0	0	0	12	8.3		
AUSTIN PEAY	01/16/16	19	2-2	1.000	0-0	.000	0-0	.000	0	3	3	4.2	5	0	3	0	0	4	8.1		
at Jacksonville State	01/20/16	26	3-7	429	0-0	.000	0-0	.000	0	4	4	4.2	1	1	2	0	0	6	7.9		
TENNESSEE STATE	01/24/16	24	2-5	400	0-0	.000	2-2	1.000	3	5	8	4.4	1	0	1	1	3	6	7.9		
at Tennessee Tech	01/26/16	21	1-2	500	0-0	.000	2-2	1.000	4	2	6	4.5	3	1	1	1	0	4	7.7		
MOREHEAD STATE	02/03/16	29	7-10	700	0-0	.000	0-1	.000	4	4	8	4.8	3	1	1	2	1	14	9.0		
EASTERN KENTUCKY	02/06/16	27	4-7	571	0-0	.000	1-2	.500	2	6	8	4.8	2	0	2	1	0	9	9.0		
JACKSONVILLE STATE	02/07/16	30	5-9	556	0-0	.000	0-0	.000	2	4	6	4.8	0	3	1	1	2	10	8.1		
at Morehead State	02/13/16	26	8-11	727	0-1	.000	2-4	.500	3	3	6	4.9	1	2	0	1	1	18	8.5		
at UTM Martin	02/15/16	8	2-3	667	0-0	.000	0-0	.000	1	1	2	4.8	3	0	2	0	0	4	8.3		
TENNESSEE TECH	02/20/16	26	3-7	429	0-0	.000	1-2	.500	2	5	7	4.9	2	0	1	1	1	7	8.3		
at Eastern Kentucky	02/24/16	27	7-14	500	0-0	.000	2-2	1.000	4	3	7	4.9	3	1	1	0	0	16	8.5		
at Tennessee State Lady TI	02/26/16	27	6-7	714	0-0	.000	2-3	.667	2	1	3	4.9	1	1	0	0	0	12	8.7		
at Tennessee State	03/02/16	27	3-6	500	0-0	.000	2-4	.500	3	3	6	4.9	1	0	0	0	0	8	8.6		
at SIUE	03/04/16	27	2-10	500	0-0	.000	0-0	.000	1	6	7	5.0	3	1	2	0	10	8.7			
at Eastern Kentucky	03/05/16	19	4-7	571	0-0	.000	2-4	.500	4	1	5	5.0	1	2	1	0	0	10	8.7		
at Michigan State	03/07/16	15	1-2	500	0-0	.000	0-0	.000	0	1	1	4.8	1	0	0	1	0	2	8.5		
Totals		22	102	126	220	60.0	60	60	55	98	43	4.9	20	12	16	12	1	16	121	4.9	



Paris Lawson
RS-Freshman • 5-9 • G •
Murfreesboro, Tenn. •
Oakland HS

*Plays piano
*Attended three different high schools

As a Freshman: Saw action in Belmont's first six contests before an injury caused her to miss the remainder of the campaign ... Scored at least three points in five of those six appearances, while tallying at least two assists in two of the contests ... Put together her best game of her brief season at Ohio State (11/19) when she scored five points, dished out five helpers and picked up four boards ... Averaged 3.3 points and 1.8 rebounds in her 12.2 minutes of action per game ... Knocked down a three-pointer in each of Belmont's first three games of the season ... 2015-16 OVC Commissioner's Honor Roll Honoree.

Prior to Belmont: Prepped at Oakland High under coach Jennifer Grandstaff ... Earned All-State honors ... Played in Tennessee state tournament ... Served as team captain.

#21 LAWSON, Paris

Opponent	Date	pts	reb	ast	blk	stl	TO	PF	FT	3P	FG	pts	reb	ast	blk	stl	TO	PF	FT	3P	FG
YOUNG-HARRIS	11/13/15	16	1-3	.333	1-2	.500	2-2	1.000	0	3	3	3.0	1	3	3	1	0	5	5.0		
UAB	11/15/15	9	1-1	1.000	1-1	1.000	0-0	.000	0	0	0	1.5	0	0	0	0	0	3	4.0		
at Ohio State	11/19/15	19	1-4	.250	1-3	.333	2-2	1.000	0	4	4	2.3	0	5	3	0	0	5	4.3		
CSU	11/22/15	10	0-1	.000	0-0	.000	3-4	.750	0	1	1	2.0	2	0	4	0	0	3	4.0		
at Alabama A&M	11/24/15	16	0-2	.000	0-1	.000	4-4	1.000	1	1	2	2.0	3	2	3	0	0	4	4.0		
TROY	11/25/15	3	0-1	.000	0-0	.000	0-0	.000	0	1	1	1.8	0	0	0	0	0	0	3.3		
at LIPSCOMB	12/02/15	dnp	-	-	-	-	-	-	-	-	-	-	-	-	-	-	-	-	-	-	-
at Wake Forest	12/05/15	dnp	-	-	-	-	-	-	-	-	-	-	-	-	-	-	-	-	-	-	-
at Chattanooga	12/07/15	dnp	-	-	-	-	-	-	-	-	-	-	-	-	-	-	-	-	-	-	-
at IUPUI	12/08/15	dnp	-	-	-	-	-	-	-	-	-	-	-	-	-	-	-	-	-	-	-
at Green Bay	12/09/15	dnp	-	-	-	-	-	-	-	-	-	-	-	-	-	-	-	-	-	-	-
at WKU	12/09/15	dnp	-	-	-	-	-	-	-	-	-	-	-	-	-	-	-	-	-	-	-
at Southeast Missouri	12/09/15	dnp	-	-	-	-	-	-	-	-	-	-	-	-	-	-	-	-	-	-	-
at SIUE	01/05/16	dnp	-	-	-	-	-	-	-	-	-	-	-	-	-	-	-	-	-	-	-
EASTERN ILLINOIS	01/09/16	dnp	-	-	-	-	-	-	-	-	-	-	-	-	-	-	-	-	-	-	-
MURRAY STATE	01/09/16	dnp	-	-	-	-	-	-	-	-	-	-	-	-	-	-	-	-	-	-	-
AUSTIN PEAY	01/09/16	dnp	-	-	-	-	-	-	-	-	-	-	-	-	-	-	-	-	-	-	-
at Jacksonville State	01/09/16	dnp	-	-	-	-	-	-	-	-	-	-	-	-	-	-	-	-	-	-	-
TENNESSEE STATE	01/09/16	dnp	-	-	-	-	-	-	-	-	-	-	-	-	-	-	-	-	-	-	-
at Tennessee Tech	01/09/16	dnp	-	-	-	-	-	-	-	-	-	-	-	-	-	-	-	-	-	-	-
MOREHEAD STATE	02/06/16	dnp	-	-	-	-	-	-	-	-	-	-	-	-	-	-	-	-	-	-	-
EASTERN KENTUCKY	02/06/16	dnp	-	-	-	-	-	-	-	-	-	-	-	-	-	-	-	-	-	-	-
JACKSONVILLE STATE	02/06/16	dnp	-	-	-	-	-	-	-	-	-	-	-	-	-	-	-	-	-	-	-
at Morehead State	02/06/16	dnp	-	-	-	-	-	-	-	-	-	-	-	-	-	-	-	-	-	-	-
at UT Martin	02/06/16	dnp	-	-	-	-	-	-	-	-	-	-	-	-	-	-	-	-	-	-	-
TENNESSEE TECH	02/06/16	dnp	-	-	-	-	-	-	-	-	-	-	-	-	-	-	-	-	-	-	-
at Tennessee State Lady	02/06/16	dnp	-	-	-	-	-	-	-	-	-	-	-	-	-	-	-	-	-	-	-
vs Tennessee State	03/02/16	dnp	-	-	-	-	-	-	-	-	-	-	-	-	-	-	-	-	-	-	-
vs SIUE	03/04/16	dnp	-	-	-	-	-	-	-	-	-	-	-	-	-	-	-	-	-	-	-
vs Eastern Kentucky	03/04/16	dnp	-	-	-	-	-	-	-	-	-	-	-	-	-	-	-	-	-	-	-
vs Michigan State	03/04/16	dnp	-	-	-	-	-	-	-	-	-	-	-	-	-	-	-	-	-	-	-
Totals			0	73	3-12	.250	3-7	.429	11-12	.917	1	10	11	1.8	6	10	13	1	0	2.0	3.3

Games played: 6
Minutes/game: 12.2
Points/game: 3.3
FG Pct: 25.0
3FG Pct: 42.9
FT Pct: 91.7

Rebounds/game: 1.8
Assists/game: 1.7
Turnovers/game: 2.2
Assist/turnover ratio: 0.8
Blocks/game: 0.2

Career-high (year)	Season-high
Pts. *5 vs. Ohio State (11/19/15)	--
Rebs. *4 vs. Ohio State (11/19/15)	--
Asst. *5 vs. Ohio State (11/19/15)	--
Blks. *1 vs. Young Harris (11/13/15)	--
Stls. --	--
FGs *1 vs. Ohio State (11/19/15)	--
FGAs *4 vs. Ohio State (11/19/15)	--
3FGs *1 vs. Ohio State (11/19/15)	--
3FGA *3 vs. Ohio State (11/19/15)	--
FTs 4 at Alabama A&M (11/24/15)	--
FTAs 4 at Alabama A&M (11/24/15)	--
Mins. *19 vs. Ohio State (11/19/15)	--



Kylee Smith
RS-Junior • 5-11 • F •
Alpharetta, Ga. •
Vanderbilt

*Loves all things pink
*Can not have any bumps in her game day pony tail

As a Redshirt Sophomore: First Team All-OVC selection and OVC All-Newcomer team member ... Leading scorer at 13.8 points per game; 23 double figure scoring games ... Grabbed 5.8 rebounds per game which was second the team ... Was among OVC leaders in 9 statistical categories ... Averaged 15.3 points and 7.2 rebounds per game in OVC competition ... Shot 39.6% from three-point land, knocking down 72 treys, the second most on the team ... Second on the team with 117 assists ... Earned OVC Player of the week twice, and was Newcomer of the Week three times ... Eclipsed the 20 points mark on seven occasions ... 14 points, eight rebounds at Ohio State (11/19) ... 24 points, including a 5-for-7 performance from behind the line against Troy, also grabbed six rebounds and dished out five assists (11/29) ... Shot 5-for-7 from three again against Trevecca (12/8), scoring 23 points ... Added her first of four double doubles vs. Trevecca (23 points, 11 rebounds) ... Scored in double digits in seven-straight games and 11 out of 12 during a stretch from late December through January ... Her 152 field goals last season were the fifth most in Belmont's NCAA Division I history and her 455 points scored last season were the fourth most ... 2015-16 OVC Commissioner's Honor Roll Honoree and 2015-16 OVC Academic Medal of Honor recipient.

2014-15: Sat out due to NCAA Transfer Regulations.

#23 SMITH, Kylee

Opponent	Date	pts	reb	ast	blk	stl	TO	PF	FT	3P	FG	pts	reb	ast	blk	stl	TO	PF	FT	3P	FG	
YOUNG-HARRIS	11/13/15	25	2-11	.182	0-3	.000	5-6	.833	2	3	5	5.0	2	4	2	0	0	9	9.0			
UAB	11/15/15	29	2-11	.182	1-6	.167	4-5	.800	2	0	2	3.5	1	4	0	1	9	9.0				
at Ohio State	11/19/15	30	6-15	.400	2-5	.400	0-0	.000	3	5	8	5.0	3	2	3	0	14	10.7				
CSU	11/22/15	19	3-5	.600	1-2	.500	0-0	.000	0	0	0	3.8	0	1	3	0	7	3.8				
at Alabama A&M	11/24/15	25	3-7	.429	0-1	.000	3-3	1.000	2	2	4	3.8	1	2	0	0	9	3.6				
TROY	11/25/15	33	9-15	.600	5-7	.714	1-2	.500	4	2	6	4.2	4	5	2	0	12	12.0				
at LIPSCOMB	12/02/15	25	7-11	.636	2-4	.500	0-0	.000	1	0	1	3.7	1	5	3	0	16	12.6				
at Wake Forest	12/05/15	33	4-15	.267	0-4	.000	1-2	.500	0	4	4	3.8	1	5	2	0	9	12.1				
TR/VEC CA	12/05/15	26	7-13	.538	5-7	.714	4-4	1.000	1	10	11	4.6	2	3	1	1	0	23	13.3			
at Chattanooga	12/07/15	32	3-8	.375	2-3	.667	0-0	.000	2	4	6	4.7	0	4	1	0	1	8	12.8			
at IUPUI	12/08/15	35	3-14	.214	1-8	.125	2-2	1.000	2	3	5	4.7	3	2	0	0	9	12.5				
at Green Bay	12/09/15	36	3-12	.250	3-6	.500	1-5	.200	1	2	3	4.6	2	5	4	1	4	10	12.3			
at WKU	12/09/15	21	4-14	.286	1-6	.167	2-3	.667	1	1	2	4.4	3	0	1	0	11	12.2				
at Southeast Missouri	12/09/15	33	5-14	.357	1-3	.333	1-4	.250	4	4	8	4.6	4	3	0	0	12	12.1				
at SIUE	01/05/16	29	4-12	.333	2-5	.400	1-2	.500	5	1	6	4.7	2	1	3	0	11	12.1				
EASTERN ILLINOIS	01/09/16	30	7-9	.778	4-8	.500	2-2	1.000	3	5	8	4.9	2	3	0	0	20	12.6				
KIARRAY STATE	01/09/16	25	7-14	.500	3-7	.429	6-7	.857	2	4	6	5.0	1	5	1	0	0	23	13.2			
AUSTIN PEAY	01/09/16	38	8-14	.571	5-9	.556	0-0	.000	2	1	3	4.9	1	5	0	0	4	21	13.6			
at Jacksonville State	01/09/16	37	2-10	.200	0-2	.000	2-3	.667	4	3	7	5.0	1	4	0	0	6	13.2				
TENNESSEE STATE	01/09/16	34	4-10	.400	2-4	.500	2-2	1.000	1	5	6	5.1	2	1	2	0	1	12	13.4			
at Tennessee Tech	01/09/16	44	5-15	.333	3-8	.375	5-6	.833	3	5	8	5.2	1	4	5	0	18	13.4				
MOREHEAD STATE	02/06/16	30	7-16	.438	5-9	.556	8-9	.889	5	7	12	5.5	1	7	1	0	1	27	14.0			
EASTERN KENTUCKY	02/06/16	38	4-17	.235	2-4	.500	9-10	.900	4	4	8	5.6	0	3	1	0	19	14.2				
JACKSONVILLE STATE	02/06/16	34	3-8	.375	3-4	.750	0-2	.000	3	2	5	5.6	1	3	3	0	9	14.0				
at Morehead State	02/06/16	33	4-10	.400	1-6	.167	3-3	1.000	2	3	5	5.6	2	5	4	0	3	12	13.9			
at UT Martin	02/06/16	37	5-11	.455	5-9	.556	1-2	.500	2	10	12	5.8	2	5	5	0	16	14.0				
TENNESSEE TECH	02/06/16	29	7-10	.700	4-6	.667	3-4	.750	3	2	5	5.8	3	5	2	0	0	21	14.3			
at Eastern Kentucky	02/06/16	36	4-12	.333	3-4	.750	2-2	1.000	2	9	11	6.0	0	2	2	0	1	13	14.2			
at Tennessee State Lady	02/06/16	24	1-3	.333	0-3	.000	3-4	.750	0	5	5	5.9	1	2	0	0	5	13.9				
vs Tennessee State	03/02/16	35	3-12	.250	0-4	.000	1-2	.500	1	5	6	5.9	0	6	5	0	1	7	13.7			
vs SIUE	03/04/16	33	5-12	.417	2-4	.500	2-2	1.000	2	5	7	6.0	3	4	0	1	14	13.7				
vs Eastern Kentucky	03/04/16	31	4-8	.500	3-6	.500	4-4	1.000	0	3	3	5.9	1	6	1	1	1	15	13.7			
vs Michigan State	03/04/16	36	7-16	.438	1-7	.143	1-2	.500	0	2	2	5.8	1	3	2	0	2	16	13.8			
Totals			32	1035	152-390	.390	72-142	.507	396	79	104	12.0	69	121	190	5.8	52	117	72	3	22	45.5

Games played: 33
Minutes/game: 31.4
Points/game: 13.8
FG Pct: 39.6
3FG Pct: 39.6
FT Pct: 76.0

Rebounds/game: 5.8
Assists/game: 3.5
Turnovers/game: 2.2
Assist/turnover ratio: 1.6
Steals/game: 0.7
Blocks/game: 0.1

Career-high (year)	Season-high
Pts. 27 vs. Morehead St. (2/3/16)	--
Rebs. *12 at UT Martin (2/15/16)	--
Asst. 7 vs. Morehead (2/3/16)	--
Blks. *1 vs. ECU (3/5/16)	--
Stls. 4 vs. Austin Peay (1/16/16)	--
FGs 9 vs. Troy (11/30/15)	--
FGAs *17 vs. ECU (2/6/16)	--
3FGs *5 vs. Morehead (2/3/16)	--
3FGA *9 at UT Martin (2/15/16)	--
FTs 9 vs. ECU (2/6/16)	--
FTAs 10 vs. ECU (2/6/16)	--
Mins. 44 at TTU (1/30/16)	--



Jenny Roy
Sophomore • 5-11 • F •
Brentwood, Tenn. •
Brentwood HS

*Outstanding three sport athlete in high school (volleyball, track and basketball)
*Cousin Brad Bars is a defensive end for the NY Giants

As a Freshman: Averaged 6.2 points and 4.6 rebounds ... Nine double figure scoring games on the year ... Averaged 24.8 minutes, and started 16 games including BU's final six contests ... Shot 46% from the field ... In her first collegiate action, she scored nine points, added nine rebounds, blocked two shots and picked up three steals ... Picked up a season-high 10 rebounds against Cleveland State (11/22) ... Scored in double digits in back-to-back games against Troy (11/29) and Lipscomb (12/2) ... Ran off three-straight double digit point games against Eastern Illinois (1/9) Murray State (1/14), and Austin Peay (1/16) ... Put forth a 12 point, four rebound game at Tennessee Tech (2/20) ... Grabbed nine rebounds in Belmont's NCAA Tournament matchup with Michigan St. (3/18) ... 2015-16 OVC Commissioner's Honor Roll Honoree.

Prior to Belmont: Prepped at Brentwood High under coaches Dandy Peeler and Ronnie Seigenthaler ... Third all-time leading scoring at BHS ... Led team in points, rebounds and blocks as a senior ... Four-time All-State honoree ... Earned All-Region nod twice ... Also played volleyball and track at BHS ... Volleyball Freshman Player of the Year ... Helped team to back-to-back state titles (2013, 2014) ... 2014 District MVP ... All-Region and All-State in volleyball ... Named Tennesseean Volleyball Player of the Year ... State High Jump champion in 2013 ... Earned All-State honors in track.

#24 ROY, Jenny

Component	Date	pts	reb	Total		3-Pointers		Free Throws		Rebounds										
				ft-pts	ft-reb	3ft-pts	3ft-reb	ft-pts	ft-reb	off	def	tot	avg	a	bfo	hls	stl	pts	avg	
YOU'NG-HARRIS	11/13/15	16	4-7	.571	0-1	.000	1-4	.250	5	4	9	3.0	0	0	2	3	9	3.0		
UAB	11/15/15	19	1-3	.333	0-0	.000	3-3	1.000	2	1	3	6.0	3	0	2	0	1	5	7.0	
at Ohio State	11/15/15	20	3-8	.375	1-2	.500	0-0	.000	3	2	5	5.7	2	2	1	0	1	7	7.0	
CSU	11/22/15	28	3-6	.500	0-1	.000	2-5	.400	2	8	10	6.8	1	2	1	1	1	8	7.0	
at Abilene Azkl	11/24/15	20	1-1	1.000	0-0	.000	2-5	.400	1	5	6	6.6	2	2	0	0	1	4	6.0	
TRIOY	11/29/15	27	4-6	.667	1-2	.500	2-2	1.000	0	1	1	5.7	2	4	1	0	0	11	7.0	
at LIPSICOMB	12/02/15	23	5-8	.625	2-2	1.000	2	2	1.000	0	2	2	5.1	1	2	1	0	0	14	8.0
at Wake Forest	12/05/15	20	3-4	.750	0-1	.000	0-0	.000	0	1	1	4.5	3	2	1	0	1	6	8.0	
at Clinchngnng	12/12/15	12	1-2	.500	0-0	.000	0-0	.000	1	2	3	4.4	0	0	0	0	0	2	7.0	
at IUPUI	12/19/15	20	2-2	1.000	0-0	.000	1-2	.500	3	2	5	4.5	3	1	2	1	1	5	7.0	
at Green Bay	12/22/15	12	0-2	.000	0-1	.000	0-0	.000	1	0	1	4.2	0	0	2	0	0	0	6.0	
at WCU	12/29/15	26	2-6	.333	0-1	.000	2-2	1.000	0	0	0	3.8	2	1	2	0	1	6	6.0	
at Southeast Missouri	1/2/16	11	0-3	.000	0-3	.000	0-2	.000	0	0	0	3.5	2	1	2	0	1	0	5.0	
at SIUE	01/05/16	17	0-0	.000	0-0	.000	0-0	.000	2	2	4	3.6	1	4	2	0	1	0	5.0	
EASTERN ILLINOIS	01/09/16	25	4-5	.800	2-3	.667	0-4	.000	3	3	6	3.7	1	7	3	0	2	10	5.0	
KUORAY STATE	01/14/16	21	3-6	.500	1-2	.500	3-4	.750	1	1	2	3.6	3	1	0	0	0	10	6.0	
AUSTIN PEAY	01/16/16	32	4-7	.571	1-5	.333	2-4	.500	2	3	5	3.7	4	5	1	3	1	11	6.0	
at Jacksonville State	01/20/16	29	2-6	.333	0-0	.000	0-0	.000	4	4	8	3.9	1	4	1	0	1	4	6.0	
TENNESSEE STATE	01/24/16	22	2-4	.500	0-1	.000	3-4	.500	2	3	5	4.0	1	3	4	0	0	7	6.0	
at Tennessee Tech	01/29/16	41	4-4	.500	0-1	.000	2-5	.400	3	2	5	4.1	3	2	0	0	1	10	6.0	
MOREHEAD STATE	02/03/16	32	2-4	.500	0-0	.000	1-5	.200	3	3	6	4.1	0	2	0	2	2	6	6.0	
EASTERN KENTUCKY	02/06/16	32	3-6	.500	0-1	.000	1-2	.500	1	2	3	4.1	2	2	1	1	0	7	6.0	
JACKSONVILLE STATE	02/10/16	29	1-5	.200	0-0	.000	0-0	.000	3	5	8	4.3	1	2	0	0	0	2	6.0	
at Morehead State	02/13/16	28	3-6	.500	2-5	.667	3-4	.750	2	1	3	4.3	4	1	1	0	1	11	6.0	
at UT Martin	02/15/16	28	2-4	.500	0-0	.000	1-1	1.000	1	3	4	4.3	1	5	3	0	2	5	6.0	
TENNESSEE TECH	02/20/16	23	4-5	.800	0-0	.000	4-5	.800	2	4	6	4.3	4	1	1	0	1	12	6.0	
at Eastern Kentucky	02/24/16	24	0-4	.000	0-1	.000	0-4	.000	3	4	7	4.4	0	1	1	0	0	6	6.0	
at Tennessee State Lady TI	02/25/16	35	1-3	.333	0-0	.000	0-0	.000	1	2	3	4.4	1	0	3	0	1	2	6.0	
vs Tennessee State	03/02/16	20	1-3	.333	1-1	1.000	0-2	.000	1	2	3	4.3	4	3	0	0	1	3	6.0	
vs SIUE	03/04/16	35	1-2	.500	0-0	.000	5-7	.714	4	2	6	4.4	2	3	1	0	2	7	6.0	
vs Eastern Kentucky	03/05/16	32	4-5	.800	0-0	.000	2-2	1.000	2	4	6	4.4	2	3	3	0	0	10	6.0	
vs Michigan State	03/11/16	34	1-6	.167	1-2	.500	0-0	.000	3	6	9	4.6	3	0	1	0	0	3	6.0	
Totals		16	793	71-152	.467	12-52	.375	45-81	.531	62	84	146	4.6	59	67	40	11	27	197	6.2

Games played: 32
Minutes/game: 24.8
Points/game: 6.2
FG Pct: 46.7
3FG Pct: 37.5
FT Pct: 53.1

Rebounds/game: 4.6
Assists/game: 2.1
Turnovers/game: 1.3
Assist/turnover ratio: 1.7
Steals/game: 0.8
Blocks/game: 0.3

Rebs. 10 vs. Cleveland St. (11/22/15) --
Asst. 5 at UT Martin (2/15/16) --
Blks. 3 vs. Austin Peay (1/16/16) --
Stls. 3 vs. Young Harris (11/13/15) --
FGs 5 at Lipscomb (12/2/15) --
FGAs 8 vs. Morehead (2/3/16) --
3FGs 2 at Morehead St. (2/13/16) --
3FGA 3 at Morehead St. (2/13/16) --
FTs 5 at SIUE (3/4/16) --
FTAs 7 at SIUE (3/4/16) --
Mins. 41 at Tennessee Tech (1/30/16) --



Ellie Harmeyer
Sophomore • 6-0 • F •
Kenosha, Wis. •
Shoreland Lutheran HS

*Gives the hardest high fives on the team
*Younger sister of Hannah Harmeyer

As a Freshman: Averaged 6.4 points and 4.2 boards during her rookie campaign ... Eight double figure scoring games ... Two double digit rebound performances, including a monster 20 point, 10 board performance at Lipscomb (12/2) her lone double-double on the year ... During a stretch in late November through early December, she tallied four-straight double-figure scoring games (Troy, 11/29), (Lipscomb, 12/2), (Wake Forest, 12/6), and (Trevecca, 12/8) ... Scored 13 points and grabbed six rebounds at SIUE (1/5) ... 12 points, eight rebounds at Morehead State (2/3) ... Corralled 10 boards in a season-high 33 minutes of action at UT Martin (2/15) ... Scored nine points against Michigan State in BU's NCAA Tournament contest (3/18) ... 2015-16 OVC Commissioner's Honor Roll Honoree.

Prior to Belmont: Prepped at Shoreland Lutheran High under coach Holly Bahr ... Four year varsity player ... Kenosha County all-time leading scoring record for girls ... Broke SLHS all-time leading scoring record ... Kenosha Holy Rosary 2015 Female Athlete of the Year ... MVP of 2015 Kenosha/Racine All-Star Senior Girls game ... First Team All-State ... First Team All Conference ... Associated Press All-State Team ... Runner-up All-State wing player ... Served as team captain ... Ranked sixth in the state in rebounds and 11th in the state for scoring per game as a senior.

#30 HARMAYER, Ellie

Opponent	Date	pts	reb	Total		3-Points		FreeThrows		Rebounds		pf	a	fto	ftd	pts	avg		
				fg	atfg	3pt	at3pt	ft	atft	orb	tot								
YOU'NG-HARRIS	11/13/15	25	3-7	.429	1-5	.333	2-2	1.000	2	1	3	3.0	3	0	1	0	9	8.5	
UAB	11/15/15	9	3-5	.600	0-1	1.000	1-2	.500	3	1	4	3.5	0	0	0	2	0	8	8.0
at Ohio State	11/15/15	18	2-5	.400	0-1	.000	5-7	.714	2	3	5	4.0	1	0	1	0	0	9	8.7
CSU	11/22/15	16	2-6	.333	0-1	.000	3-3	1.000	1	3	4	4.0	2	0	1	0	0	7	8.3
at Abilene A&M	11/24/15	19	3-8	.375	0-2	.000	1-2	.500	0	5	5	4.2	3	1	1	0	1	7	8.0
TRIOY	11/29/15	21	6-7	.857	2-2	1.000	2-2	1.000	4	4	8	4.8	0	0	1	0	0	16	9.3
at LIPSOMB	12/02/15	22	6-10	.600	4-6	.667	4-4	1.000	4	6	10	5.6	4	1	2	0	0	20	10.9
at Wake Forest	12/05/15	21	4-6	.667	2-2	1.000	2-3	.667	2	2	4	5.4	3	2	2	0	1	12	11.0
TREVECCA	12/08/15	25	3-5	.600	0-1	.000	4-4	1.000	2	7	9	5.8	3	2	1	0	1	10	10.9
at Chattanooga	12/12/15	8	1-4	.250	0-2	.000	0-0	.000	0	1	1	5.3	0	0	0	0	0	2	10.0
at IUPUI	12/19/15	12	1-4	.250	0-2	.000	0-0	.000	1	3	4	5.2	2	0	3	0	0	2	9.3
at Green Bay	12/22/15	15	2-4	.500	1-2	.500	2-2	1.000	1	0	1	4.8	3	1	0	0	1	7	9.1
at WCU	12/29/15	6	1-1	1.000	0-0	.000	0-0	.000	0	1	1	4.5	1	0	1	0	0	2	8.5
at Southeast Missouri	1/2/16	14	0-6	.000	0-1	.000	2-2	1.000	2	1	3	4.4	2	1	1	0	1	2	8.1
at SIUE	01/05/16	19	3-5	.600	1-1	1.000	6-7	.857	2	4	6	4.5	1	2	1	0	0	13	8.4
EASTERN ILLINOIS	01/09/16	16	2-7	.286	2-5	.400	0-0	.000	1	3	4	4.5	4	2	1	0	0	6	8.3
KUORAY STATE	01/14/16	18	0-5	.000	0-1	.000	0-0	.000	1	6	7	4.6	3	1	4	0	1	0	7.8
AUSTIN PEAY	01/16/16	14	0-3	.000	0-1	.000	2-2	1.000	1	2	3	4.6	2	1	2	0	2	7	7.4
at Jacksonville State	01/20/16	12	3-6	.500	1-3	.333	0-0	.000	1	3	4	4.5	2	0	0	0	0	7	7.4
TENNESSEE STATE	01/24/16	10	1-5	.200	1-3	.333	0-0	.000	0	3	3	4.5	1	0	0	0	0	3	7.2
at Tennessee Tech	01/29/16	12	2-7	.286	0-3	.000	0-1	.000	0	1	4	4.4	1	0	3	0	0	4	7.0
MOREHEAD STATE	02/03/16	9	1-4	.250	0-1	.000	0-0	.000	1	1	2	4.3	3	1	0	0	0	2	6.8
EASTERN KENTUCKY	02/06/16	7	0-3	.000	0-1	.000	0-0	.000	0	1	1	4.2	1	0	0	0	1	0	6.5
JACKSONVILLE STATE	02/10/16	4	1-2	.500	0-1	.000	0-0	.000	0	0	0	4.0	1	0	2	0	0	2	6.3
at Morehead State	02/13/16	19	3-3	1.000	2-2	1.000	4-4	1.000	2	6	8	4.2	0	2	2	0	0	12	6.6
at UT Martin	02/15/16	33	2-7	.286	1-3	.333	0-0	.000	4	6	10	4.4	4	1	1	0	0	5	6.5
TENNESSEE TECH	02/20/16	12	1-4	.250	0-2	.000	0-0	.000	1	1	2	4.3	1	0	3	0	0	2	6.3
at Eastern Kentucky	02/24/16	11	1-4	.250	0-2	.000	0-0	.000	0	1	1	4.2	1	0	2	0	0	2	6.2
vs Tennessee State Lady TI	02/25/16	14	3-7	.429	2-4	.500	2-3	.667	1	3	4	4.2	0	1	0	0	0	10	6.3
vs Tennessee State	03/02/16	4	0-1	.000	0-0	.000	0-0	.000	0	2	2	4.1	0	0	1	0	0	0	6.1
vs SIUE	03/04/16	12	4-4	1.000	3-3	1.000	0-0	.000	2	2	4	4.1	2	0	2	0	0	11	6.3
vs Eastern Kentucky	03/05/16	17	2-6	.333	1-2	.500	3-4	.750	4	4	8	4.2	3	2	0	1	0	8	8.3
vs Kennesaw State	03/11/16	16	2-4	.500	2-3	.667	3-4	.750	0	3	3	4.2	3	1	2	0	0	9	6.4
Total		0	0	68.145	115	52.6%	0	10.4%	16	93	188	13.0	90	20	11	4	9	211	6.3



Maura Muensterman
RS- Sophomore • 6-0 • F •
Evansville, Ind. • Indiana

*Sat out 2015-16 season due to NCAA transfer rules
 *Performed National Anthem at a game last season

2015-16: Did not participate due to NCAA transfer rules ...

Prior to Belmont: Spent one year at Indiana University where she came off the bench in 14 contests ... Averaged 0.9 points, 0.9 rebounds per outing ... Prepped at Mater Dei High School for head coach Steve Goans ... Led MDHS to back-to-back state championships in 2012 and 2013, followed by a runner-up finish in 2014 ... Was a runner-up in the 2014 Indiana Miss Basketball voting ... Holds the Indiana high school record for career assists (774) while playing the wing position rather than being a point guard ... Finished career as the 11th-best career scorer in the history of girls high school basketball in the state of Indiana (2,306) ... is the all-time career leading scorer, male or female, in the history of the Southern Indiana Conference ... Three time conference player of the year honoree and three times earned Evansville's All City Metro Player of the Year award ... In all her four years, she never averaged less than 22.0 points per game and never shot less than 54 percent from the field overall or 45 percent from beyond the arc.



Darby Maggard
Sophomore • 5-5 • G •
Larwill, Ind. • Canterbury HS

*Favorite movie is Hoosiers
 * 2015 Indiana Miss Basketball Runner-Up, ESPN100 Recruit

As a Freshman: OVC Freshman of the Year ... First Team All-OVC ... Top 50 nationally in seven statistical categories ... Within the OVC ranks she was second in assists, second in 3PTFG/gm and second in asst/TO ratio ... Belmont's second leading scorer at 12.5 per game ... Started all 33 games as a true freshman, led the team in minutes played at 1,152 ... Led Belmont with 5.3 assists per game ... Shot 42% (137-315) from three-point land and 93% (53-57) from the charity stripe ... Tied for team lead with 27 steals ... Opened the season with three double figure scoring games in Belmont's first four contests ... Scored 16 points in her first ever collegiate game, hitting four three-pointers against (11/13) ... Poured in a season-high 26 points at UT Martin, hitting a season-high eight three-pointers (2/15) ... Scored eight points while dishing out four assists in Belmont's NCAA Tournament matchup with Michigan State (3/18).

Prior to Belmont: Prepped at Fort Wayne Canterbury under coach Wayne Kreiger ... Indiana Miss Basketball Runner-up 2015 ... McDonald's All-America nominee ... Indiana All-Star Team ... 21 Alive Fort Wayne Girls Basketball Player of the Year 2015 ... 2015 News Sentinel Player of the Year ... Set two FWC records -- most points in a single game (47) and most assists (17) ... Set Indiana free-throw percentage single season record, hitting 98.6 percent at the line ... Helped FWC to back-to-back IHSAA state championship titles (2012, 2013) ... Helped FWC to back-to-back IHSAA state runners-up (2014, 2015) ... ESPNW ranked #94.

#33 MAGGARD, Darby

Opponent	Date	us	thru	Total		3-Pointers		Free throws		Rebounds											
				f-g	fta	f-g	fta	f-g	fta	off	def	tot	avg	pf	a	to	blk	stl	pts	avg	
YOUNG-HARRIS	11/03/15	A	26	6-10	.600	4-8	.500	0-0	.000	1	4	5	5.0	0	4	3	0	2	16	16.0	
UAB	11/05/15	A	31	2-4	.500	1-3	.333	0-0	.000	0	6	6	5.5	2	3	2	0	0	5	10.5	
nt Ohio State	11/09/15	A	28	4-12	.333	2-9	.222	0-0	.000	1	3	4	5.0	0	1	4	0	0	10	10.3	
CSU	11/20/15	A	28	3-9	.333	3-9	.333	6-6	1.000	0	4	4	4.8	2	6	4	0	2	15	11.5	
nt Abilene A&M	11/24/15	A	23	0-1	.000	0-1	.000	0-0	.000	0	3	3	4.4	1	3	1	0	0	0	9.2	
TRCY	11/29/15	A	36	6-11	.545	3-8	.375	8-8	1.000	0	5	5	4.5	1	6	2	0	1	23	11.5	
nt LIPSICOMB	12/02/15	A	34	4-9	.444	4-9	.444	0-0	.000	1	7	8	5.0	0	10	4	0	1	12	11.6	
nt Wake Forest	12/05/15	A	37	5-13	.385	3-4	.750	0-0	.000	0	5	5	5.0	1	3	2	0	1	13	11.8	
TR EVEC CA	12/08/15	A	34	3-11	.273	3-8	.375	0-0	.000	0	5	5	5.0	1	9	2	0	1	9	11.4	
nt Cliftonneigh	12/09/15	A	39	2-5	.400	1-4	.250	2-2	1.000	0	6	6	5.1	3	3	2	0	0	7	11.0	
nt IUPUI	12/09/15	A	38	7-13	.538	1-5	.200	1-2	.500	0	2	2	4.8	4	7	4	0	3	16	11.5	
nt Green Bay	12/22/15	A	38	5-11	.455	4-8	.500	2-2	1.000	0	3	3	4.7	1	1	3	0	0	16	11.0	
nt WBU	12/29/15	A	39	6-12	.500	3-6	.500	0-0	.000	1	7	8	4.9	0	6	1	0	0	15	12.1	
nt Southeast Missouri	12/31/15	A	38	4-8	.500	4-7	.571	2-2	1.000	0	2	2	4.7	1	7	2	0	1	14	12.2	
nt SIUE	01/05/16	A	35	1-4	.250	0-2	.000	0-0	.000	0	4	4	4.7	2	4	3	0	1	2	11.5	
EASTERN ILLINOIS	01/09/16	A	31	4-8	.500	3-6	.500	0-0	.000	0	5	5	4.7	3	8	0	0	1	11	11.5	
MURRAY STATE	01/14/16	A	28	7-9	.778	3-6	.500	0-0	.000	0	3	3	4.6	0	6	2	1	1	17	11.9	
AUSTIN PEAY	01/16/16	A	40	8-18	.444	4-8	.500	4-4	1.000	0	6	6	4.7	1	10	1	0	0	24	12.5	
nt Jacksonville State	02/01/16	A	40	1-4	.250	1-1	1.000	2-2	1.000	0	6	6	4.7	0	1	2	0	1	5	12.1	
TENNESSEE STATE	02/04/16	A	39	4-9	.444	2-5	.400	2-2	1.000	0	4	4	4.7	1	10	1	0	0	12	12.1	
nt Tennessee Tech	01/20/16	A	45	7-23	.304	6-17	.353	0-0	.000	0	1	1	4.5	1	2	1	0	0	20	12.5	
KIOWHEAD STATE	02/03/16	A	32	6-11	.545	4-7	.571	2-2	1.000	0	1	1	4.4	0	5	2	0	0	18	12.7	
EASTERN KENTUCKY	02/06/16	A	37	4-7	.571	3-6	.500	6-6	1.000	0	5	5	4.4	1	5	8	0	2	17	12.9	
JACKSONVILLE STATE	02/10/16	A	39	3-9	.333	3-6	.500	2-2	1.000	0	3	3	4.3	2	4	4	0	1	11	12.8	
nt Kiewit State	2/13/16	A	30	3-10	.300	2-8	.250	0-0	.000	0	3	3	4.3	0	7	0	0	1	8	12.6	
nt UT Martin	2/15/16	A	40	9-17	.529	8-15	.533	0-1	.000	0	3	3	4.2	1	6	6	0	0	26	15.2	
TENNESSEE TECH	02/20/16	A	37	0-7	.000	0-5	.000	3-4	.750	0	1	1	4.1	2	2	5	0	2	3	12.8	
nt Eastern Kentucky	02/24/16	A	35	3-7	.429	1-2	.500	0-0	.000	0	2	2	4.0	1	6	3	0	0	7	12.6	
nt Tennessee State Lady T	02/28/16	A	33	3-5	.600	1-1	1.000	2-2	1.000	0	4	4	4.0	1	3	4	0	1	9	12.4	
us Tennessee State	03/02/16	A	35	5-9	.556	2-5	.400	4-4	1.000	0	2	2	4.0	0	3	1	0	1	16	12.6	
us SIUE	03/04/16	A	36	6-13	.462	4-9	.444	2-2	1.000	0	2	2	3.9	1	10	1	0	1	18	12.7	
us Eastern Kentucky	03/05/16	A	35	3-8	.375	0-3	.000	2-3	.667	1	3	4	3.9	0	6	0	1	0	8	12.6	
us Kitchikan State	03/08/16	A	36	3-8	.375	1-3	.333	1-1	1.000	0	2	2	3.8	0	4	3	0	2	8	12.5	
Totals			33	1152	157-315	.495	84-200	.420	53-57	.930	5	122	127	5.8	34	174	80	2	27	41	12.5

Games played: 33
 Minutes/game: 34.9
 Points/game: 12.5
 FG Pct: 48.5
 3FG Pct: 42.0
 FT Pct: 93.0

Rebounds/game: 3.8
 Assists/game: 5.3
 Turnovers/game: 2.4
 Assist/turnover ratio: 2.2
 Steals/game: 0.8
 Blocks/game: 0.1

Career-high (year)	Season-high
Pts. --	--
Rebs. --	--
Asst. --	--
Blks. --	--
Stls. --	--
FGs --	--
FGAs --	--
3FGs --	--
3FGA --	--
FTs --	--
FTAs --	--
Mins. --	--

Career-high (year)	Season-high
Pts. 26 at UT Martin (2/15/16)	--
Rebs. *8 at SIUE (1/5/16)	--
Asst. *10 vs. SIUE (3/4/16)	--
Blks. --	--
Stls. 3 at IUPUI (12/18/15)	--
FGs 9 at UT Martin (2/15/16)	--
FGAs 23 at Tennessee Tech (2/15/16)	--
3FGs 8 at UT Martin (2/15/16)	--
3FGA 17 at TTU (2/15/16)	--
FTs 8 vs. Troy (11/30/15)	--
FTAs 8 vs. Troy (11/30/15)	--
Mins. 45 at Tennessee Tech (1/30/16)	--



Hannah Harmeyer
RS- Sophomore • 5-8
• G • Kenosha, Wis. •
Wisconsin Lutheran College

*Sister Ellie is a sophomore forward on the team
 *Favorite singer is Kenny Chesney

2015-16: Did not play due to NCAA transfer rules ...

Prior to Belmont: Spent one season at Wisconsin Lutheran College ... Made appearances in 24 contests ... Averaged 2.8 points and 0.8 rebounds per outing ... Prepped at Lutheran Shoreland High under coach Holly Bahr ... Second Team All-Metro Classic Conference selection as a junior and senior ... All-Kenosha County selection as a sophomore, junior, and senior ... All-conference honorable mention sophomore year ... Averaged 15 points per game as a senior ... Played in the WBCA All-Star Game ... Served as team captain.



Sally McCabe
Junior • 6-3 • F • Mt.
Juliet, Tenn. • Mt. Juliet HS

*Big fan of the Phantom of the Opera
 *Grandfather Frank won a Gold Medal in 1952 Olympics

As a Sophomore: First Team All-OVC; OVC Defensive POTY ... BU's third leading scorer at 12.2 points per game ... BU's leading rebounder at 7.3 per contest ... Shot 51.1% from the floor (169-331) ... Started all 33 games ... 24 double-figure point games, seven double-figure rebound games ... Notched five double-doubles ... Scored at least 20 points in three games ... Shot 80% from the free throw line ... Scored at least 14 points in seven-straight games from late December through mid January ... 12 point, 13 rebound at Wake Forest (12/6) ... Ohio Valley Conference Co-Player of the Week and College Sports Madness Ohio Valley Women's Basketball Player of the Week (Dec. 7) ... 17 point, 19 board effort at SEMO (12/31) ... OVC Tournament MVP after career-high 23/10 in OVC final (3/5) ...

As a Freshman: Played in all 31 games, earning 19 starts ... Broke freshman record for most rebounds in a single game with 19 ... Finished rookie season nationally ranked 130th in blocked shots per game (1.42) ... In the OVC ranked fifth in blocked shots per game and seventh in field-goal percentage ... Led the Bruins in blocks (44) and was second on the team in rebounds (175), defensive rebounds (131), and field goals made (118) ... Two-time OVC Freshman of the Week (1/27 and 2/17) ... Averaged 8.8 points and 5.6 rebounds per outing ... Reached double digits in scoring on 14 occasions ... Notched three double doubles ... Tallied three or more blocks six times ... Named to OVC Commissioner's Honor Roll.

#50 MCCABE, Sally

Opponent	Date	pts	reb	Total		3-Pointers		Free throws		Rebounds		Off		Def		Tot		Ast		Stl		Bk		Pct	
				fg	ft	fg	ft	fg	ft	fg	ft	fg	ft	fg	ft	fg	ft	fg	ft	fg	ft	fg	ft	fg	ft
YOUNG-HARRIS	11/13/15	21	5-6	.833	0-0	.000	0-0	.000	0-0	1	4	5	5.0	2	0	1	0	0	10	10.0					
UAB	11/15/15	21	2-8	.250	1-2	.500	0-0	.000	2	4	6	5.5	2	0	1	3	0	5	7.5						
at Ohio State	11/19/15	23	1-5	.200	0-0	.000	2-2	1.000	3	3	6	5.7	0	2	0	0	0	4	6.3						
CSU	11/22/15	25	5-11	.455	0-0	.000	0-0	.000	0	8	8	6.3	1	4	0	2	0	10	7.3						
at Abilene Azel	11/24/15	25	9-12	.750	0-0	.000	1-2	.500	3	3	6	6.2	1	1	1	0	2	19	9.6						
TROY	11/29/15	27	5-15	.333	0-0	.000	6-6	1.000	3	8	11	7.0	3	2	2	3	1	16	10.7						
at LIPSCOMB	12/02/15	25	8-10	.800	0-1	.000	2-2	1.000	3	5	8	7.1	1	2	2	2	1	18	11.7						
at Wake Forest	12/05/15	21	5-15	.333	1-1	1.000	1-2	.500	7	6	13	7.9	3	2	2	2	1	12	11.8						
TREVECCA	12/05/15	5	1-2	.500	0-0	.000	0-0	.000	0	1	1	7.1	0	0	0	0	0	2	10.7						
at Chattanooga	12/11/15	27	6-15	.467	0-0	.000	2-3	.667	0	6	6	7.0	3	2	0	1	1	14	11.0						
at IU/PUI	12/11/15	28	5-8	.625	1-3	.333	0-0	.000	0	9	9	7.2	2	1	2	3	0	11	11.0						
at Green Bay	12/22/15	14	2-4	.500	0-1	.000	0-0	.000	2	0	2	6.8	4	1	1	0	0	4	10.4						
at WAKU	12/29/15	29	4-6	.667	0-0	.000	1-1	1.000	1	4	5	6.6	2	1	0	2	0	9	10.3						
at Southeast Missouri	12/31/15	21	8-14	.571	0-1	.000	1-1	1.000	2	7	9	6.8	4	2	0	1	0	17	10.8						
at SIUE	01/05/16	29	6-14	.429	2-6	.333	0-0	.000	2	6	8	6.9	4	1	3	2	0	14	11.0						
EASTERN ILLINOIS	01/09/16	23	6-12	.500	1-2	.500	1-1	1.000	2	6	8	6.9	1	2	0	2	3	10	11.2						
KIUMAY STATE	01/14/16	23	5-6	.833	0-1	.000	0-0	.000	1	8	9	7.1	1	3	0	3	0	10	11.1						
AUSTIN PEAY	01/16/16	30	9-14	.643	1-3	.333	1-1	1.000	1	6	7	7.1	4	1	1	1	1	20	11.6						
at Jacksonville State	02/01/16	32	6-15	.467	0-2	.000	2-3	.667	2	4	6	7.0	2	2	3	4	0	14	11.7						
TENNESSEE STATE	02/04/16	23	7-15	.467	1-2	.500	3-3	1.000	2	4	6	7.0	5	2	1	1	1	18	12.1						
at Tennessee Tech	02/05/16	34	1-10	.100	0-2	.000	4-4	1.000	3	9	12	7.2	5	5	4	4	0	6	11.5						
KIOWHEAD STATE	02/05/16	17	3-8	.375	0-1	.000	0-0	.000	2	3	5	7.1	3	2	2	1	1	6	11.5						
EASTERN KENTUCKY	02/06/16	28	5-15	.333	0-1	.000	1-4	.250	6	7	13	7.3	4	1	1	1	1	11	11.5						
JACKSONVILLE STATE	02/07/16	36	5-10	.500	1-1	1.000	3-4	.750	1	12	13	7.6	2	2	4	4	0	14	11.6						
at Kiewit State	2/15/16	21	5-10	.500	0-2	.000	1-2	.500	2	4	6	7.5	4	1	1	4	1	11	11.6						
at UT Martin	2/15/16	25	7-9	.778	1-3	.333	0-1	.000	1	5	6	7.5	3	1	1	2	0	15	11.7						
TENNESSEE TECH	02/20/16	31	7-14	.500	0-2	.000	0-0	.000	2	10	12	7.6	3	1	4	3	1	14	11.8						
at Eastern Kentucky	02/24/16	19	3-5	.600	1-2	.500	1-2	.500	0	4	4	7.5	3	3	2	0	1	8	11.6						
at Tennessee State Lady TL	2/24/16	25	6-8	.750	1-1	1.000	0-0	.000	1	7	8	7.5	2	2	3	1	0	13	11.7						
vs Tennessee State	03/01/16	20	8-15	.533	0-2	.000	2-2	1.000	2	4	6	7.5	0	1	1	3	0	18	11.9						
vs SIUE	03/04/16	26	7-10	.700	1-2	.500	6-6	1.000	3	3	6	7.4	2	1	1	3	0	21	12.2						
vs Eastern Kentucky	03/05/16	23	7-14	.500	2-2	1.000	7-8	.875	3	7	10	7.5	1	2	0	0	0	23	12.5						
vs Kiewit State	03/11/16	21	0-8	.000	0-2	.000	0-0	.000	1	1	2	7.3	3	4	0	1	0	0	12.2						
Totals		33	790	169-331	.511	15-48	.313	48-60	.800	64	178	242	7.3	82	55	46	59	16	401	12.2					

Games played: 33
 Minutes/game: 24.2
 Points/game: 12.2
 FG Pct: 51.1
 3FG Pct: 31.3
 FT Pct: 88.0

Rebounds/game: 7.3
 Assists/game: 1.7
 Turnovers/game: 1.4
 Assist/turnover ratio: 1.2
 Steals/game: 0.5
 Blocks/game: 1.8

Career-high (year)	Season-high
Pts. --	--
Rebs. --	--
Asst. --	--
Blks. --	--
Stls. --	--
FGs --	--
FGAs --	--
3FGs --	--
3FGA --	--
FTs --	--
FTAs --	--
Mins. --	--

Career-high (year)	Season-high
Pts. 23 vs. EKU (3/5/16)	--
Rebs. 19 at Jax St (2/11/15)	--
Asst. 5 vs. TTU (1/30/16)	--
Blks. 4 vs. Tennessee Tech (1/31/15)	--
Stls. 3 vs. EIU (1/9/16)	--
FGs *9 vs. Austin Peay (1/16/16)	--
FGAs *14 vs. EKU (3/5/16)	--
3FGs *2 vs. EKU (3/5/16)	--
3FGA 6 at SIUE (1/5/16)	--
FTs 7 vs. EKU (3/5/16)	--
FTAs 8 vs. EKU (3/5/16)	--
Mins. 36 vs. Jax St (2/10/16)	--



Maddie Wright
Freshman • 6-1 • F •
Chattanooga, Tenn. •
Boyd-Buchanan HS

*Father Rusty is an assistant football coach at Chattanooga

*Lists Pat Summit as a person she admires

Prior to Belmont: Prior to Belmont: Prepped at Boyd Buchanan High School in Chattanooga, Tenn. under Head Coach Tracey Walker ... Four-time all-district, four-time all-region and four-time all-state tournament (5A) honoree ... Named McDonald's All-American Honorable Mention after her senior campaign ... Tabbed district MVP junior and senior year ... Member of both the 1,000 point and 1,000 rebound club ... Averaged a double double her senior season with 15 points and 12 boards ... Earned National Honor Society, National Spanish Honor Society and Principal's Honor Roll designations during her prep days.

Belmont WBB: A Rich History

Belmont University women's basketball has a rich tradition dating back to 1968. Betty Wiseman, a matriarch at Belmont and a trailblazer for women's in sports at the collegiate level, single-handedly founded the Belmont program. Playing with discarded equipment and traveling in a used van, Wiseman and Belmont cobbled together a modest 10-game schedule in 1968-69. A forerunner to Title IX in 1972, Wiseman forged one of the first women's basketball programs in the southeast, building the then-Rebelette program to national prominence. In year two, Belmont went 17-2, a quickly earned four bids to the Women's National Invitation Tournament (WNIT) during the 1970s. Belmont boasts 24 victories over Power 5 conference opposition, including last season's triumph at Wake Forest. In addition, Belmont is 6-3 all-time against the University of Tennessee Lady Vols. Wiseman has been honored at the NCAA Women's Final Four by the WBCA and was inducted into the Tennessee Sports Hall of Fame in 2004.



Betty Wiseman

Getting To Know Belmont

Being a stone's throw from fame Music Row in Nashville, Belmont has a proud and distinguished history in musical performance. Some notable alumni include: Brad Paisley, Josh Turner, Trisha Yearwood, Stephen Curtis Chapman, Lee Ann Womack, Melinda Doolittle, and former Belmont Baseball pitcher Brian Kelley of Florida Georgia Line. Other notable alumni include: Ian Clark (NBA Golden State Warriors), Brian Baker (ATP tennis), Rachel Smith (former Miss USA/ABC News correspondent), Stu Grimson (NHL), Minnie Pearl (Grand Old Opry/Hee Haw). Since transitioning from NAIA to NCAA Division I in 1996-97 - and joining the Atlantic Sun Conference in 2001-02 prior to the Ohio Valley Conference in the fall of 2012 - Belmont University Athletics has a proud NCAA Tournament history:

-Men's Basketball (7): 2006, 2007, 2008, 2011, 2012, 2013, 2015

-Volleyball (4): 2006, 2008, 2012, 2015

-Baseball (2): 2011, 2012

-Women's Basketball (2): 2007, 2016

-Women's Soccer (1): 2008

-Men's Tennis (1): 2006



Career-high (year)	Season-high
Pts. --	--
Rebs. --	--
Asst. --	--
Blks. --	--
Stls. --	--
FGs --	--
FGAs --	--
3FGs --	--
3FGA --	--
FTs --	--
FTAs --	--
Mins. --	--