

# FORT WAYNE

# WOMEN'S BASKETBALL



## FORT WAYNE MASTODONS

5-21, 2-11 SUMMIT LEAGUE

VS

## SOUTH DAKOTA STATE JACKRABBITS

19-7, 10-4 SUMMIT LEAGUE



### NOVEMBER (1-6)

11/6	INDIANA TECH (EXHIBITION)	W, 78-46
11/11	BELMONT	L, 85-59
11/12	DEFIANCE	W, 76-58
11/14	TRINE	L, 80-71
11/16	at Butler	L, 70-64
11/19	OAKLAND	L, 82-61
11/26	COASTAL CAROLINA	L, 72-57
11/30	at Kent State	L, 66-55

### DECEMBER (2-6)

12/2	at Illinois	L, 56-33
12/6	at Western Michigan	L, 61-35
12/10	at UIC	W, 61-55
<b>WRIGHT STATE INVITATIONAL (DEC. 19-21)</b>		
12/19	vs. Miami (Ohio)	L, 69-47
12/20	at Wright State	L, 62-51
12/21	vs. Eastern Kentucky	W, 69-58
12/28	WESTERN ILLINOIS •	L, 75-53
12/31	at Oral Roberts •	L, 82-56

### JANUARY (1-6)

1/5	at South Dakota State •	L, 73-51
1/7	at North Dakota State •	L, 68-56
1/12	DENVER •	L, 78-72
1/18	at South Dakota •	L, 87-59
1/21	ORAL ROBERTS •	L, 75-59
1/25	OMAHA •	W, 65-62
1/28	IUPUI • (PINK OUT)	L, 62-48

### FEBRUARY (1-3)

2/4	at Denver •	L, 78-50
2/9	SOUTH DAKOTA •	L, 82-55
2/11	NORTH DAKOTA STATE •	W, 72-68
2/15	at Omaha •	L, 63-49
2/18	SOUTH DAKOTA STATE •	4 P.M.
2/22	at Western Illinois •	8 P.M.
2/25	at IUPUI •	3 P.M.

### MARCH (0-0)

<b>SUMMIT LEAGUE TOURNAMENT (Feb. 4-7)</b>		
4-5	Quarterfinals	TBD
6	Semifinals	TBD
7	Championship	TBD

• Summit League Games

**CAPS/BOLD = Home Games | All Times Eastern**

## FORT WAYNE REFERENCES

As a part of the Fort Wayne athletic department's rebranding effort that began in 2016, we respectfully ask to refer to any athletic-related subjects as "Fort Wayne" or the "Fort Wayne Mastodons." Please refer to the school as "IPFW" or "Indiana University - Purdue University Fort Wayne". "IPFW" is not acceptable when referring to the athletic teams. References of "Fort Wayne University" or "University of Fort Wayne" **ARE NOT ACCEPTABLE IN ANY CONTEXT.** Please do not use "Lady 'Dons" when referring to women's teams.



#### LAST GAME:

L, 63-49 at Omaha (Feb. 15)

#### COACH:

Niece Nelson | 1st Season

#### SCORING LEADER:

De'Jour Young | 12.6 ppg

#### REBOUNDING LEADER:

De'Jour Young | 5.2 rpg

#### ASSIST LEADER:

Rachel Rinehart | 2.3 apg

#### STEAL LEADER:

Rachel Rinehart | 1.8 spg

#### BLOCK LEADER:

Selena Lozada | 0.6 bpg

#### TALE OF THE TAPE

CATEGORY	FORT WAYNE	SDSU
POINTS SCORED	57.0	70.2
POINTS ALLOWED	70.3	59.8
FG PCT.	.386	.436
OPP. FG PCT.	.489	.387
3-POINT PCT.	.273	.332
OPP. 3-POINT PCT.	.398	.288
FREE THROW PCT.	.755	.744
REBOUNDS	29.2	38.0
REBOUND MARGIN	-4.3	+4.3
ASSISTS	9.9	14.2
TURNOVERS	15.9	13.3
STEALS	6.7	6.2
BLOCKED SHOTS	1.5	3.7

#### LAST GAME:

L, 83-77 at Western Illinois (Feb. 15)

#### COACH:

Aaron Johnston | 17th Season

#### SCORING LEADER:

Madison Guebert | 15.3 ppg

#### REBOUNDING LEADER:

Clarissa Ober | 7.3 rpg

#### ASSIST LEADER:

Kerri Young | 3.4 apg

#### STEAL LEADER:

Alexis Alexander | 1.2 spg

#### BLOCK LEADER:

Clarissa Ober | 1.3 bpg

## GAMEDAY INFORMATION

**WHEN:** Saturday, February 18 | 4 p.m.

**WHERE:** Fort Wayne, Ind. | Gates Sports Center (1,800)

**LIVE VIDEO:** Fort Wayne Sidarm All-Access

**LIVE AUDIO:** Fort Wayne Stretch Internet | Mike Maahs, play-by-play

**LIVE STATS:** Fort Wayne Sidarm Live Stats

**SERIES HISTORY:** South Dakota State leads 28-1

**LAST MEETING:** South Dakota State won 73-51 | January 5, 2017 | Brookings, S.D.

## MASTODON PROBABLE STARTERS (SUBJECT TO CHANGE)



### Anna Lappenküper

5-8 Fr.

Herne, Germany / Otto Hahn Gymnasium

GP	GS	PPG	RPG	Ast	FG%	3FG%	FT%
26	21	6.6	2.54	41	.365	.242	.697



### De'Jour Young

5-7 So.

Fort Wayne, Ind. / Concordia Lutheran

GP	GS	PPG	RPG	Ast	FG%	3FG%	FT%
26	26	12.6	5.19	53	.413	.200	.852



### Selena Lozada

6-2 Sr.

Perth Amboy, N.J. / Western Guilford / Guilford Technical CC

GP	GS	PPG	RPG	Ast	FG%	3FG%	FT%
24	20	6.6	3.79	11	.386	.500	.577



### Zaria Atkins

5-7 Fr.

Dudley, N.C. / Southern Wayne

GP	GS	PPG	RPG	Ast	FG%	3FG%	FT%
26	20	8.5	2.12	59	.401	.352	.855



### Rachel Rinehart

5-8 Sr.

Angola, Ind. / Angola

GP	GS	PPG	RPG	Ast	FG%	3FG%	FT%
26	25	8.7	3.77	60	.475	.278	.782

## SOUTH DAKOTA STATE PROBABLE STARTERS (SUBJECT TO CHANGE)

#	Name	Ht.	Cl.	Hometown	PPG	RPG	APG	FG%	3FG%	FT%
1	G Alexis Alexander	5-7	Jr.	Brooklyn Park, Minn.	5.2	3.5	2.5	.389	.174	.694
10	G Kerri Young	6-0	Sr.	Mitchell, S.D.	13.6	5.0	3.4	.464	.330	.836
11	G Madison Guebert	5-8	So.	Apple Valley, Minn.	15.3	2.3	1.8	.444	.440	.859
21	C Clarissa Ober	6-2	Sr.	Glencoe, Minn.	9.5	7.3	0.9	.431	.185	.765
45	F Ellie Thompson	6-1	Jr.	Chaska, Minn.	13.0	6.5	1.7	.498	.250	.713

## 2016-17 SUMMIT LEAGUE STANDINGS

(as of 2/17/2017)

Team	Summit				Overall					
	Rec.	Pct.	PF	PA	Rec.	Pct.	PF	PA	Last 10	Strk.
Western Illinois	11-3	0.786	1100	965	21-6	0.778	2173	1802	8-2	Won 6
South Dakota	10-3	0.769	929	782	21-5	0.808	1929	1638	8-2	Won 2
South Dakota State	10-4	0.714	1011	840	19-7	0.731	1824	1556	7-3	Lost 2
IUPUI	9-4	0.692	809	732	19-7	0.731	1740	1482	8-2	Won 2
Omaha	6-7	0.462	863	862	13-13	0.500	1772	1662	5-5	Won 2
Oral Roberts	5-9	0.357	806	899	13-14	0.481	1715	1725	3-7	Lost 3
North Dakota State	4-9	0.308	839	976	6-20	0.231	1667	1930	2-8	Lost 1
Denver	3-10	0.231	809	902	6-20	0.231	1640	1800	3-7	Lost 3
Fort Wayne	2-11	0.154	745	953	5-21	0.192	1483	1828	2-8	Lost 1

## 2016-17 SUMMIT LEAGUE PLAYERS OF THE WEEK

Date	Player	Pos.	School	Jan. 30	Mikale Rogers	C	IUPUI
Nov. 14	Allison Arens	G	South Dakota	Feb. 6	Emily Clemens	G	Western Illinois
Nov. 21	Macy Miller	G	South Dakota State	Feb. 14	Morgan Blumer	G	Western Illinois
	Emily Clemens	G	Western Illinois		Danielle Lawrence	G	IUPUI
Nov. 29	Emily Clemens	G	Western Illinois	Feb. 20			
Dec. 5	Mikale Rogers	C	IUPUI	Feb. 27			
	Maria Martianez	F	Oral Roberts				
Dec. 12	Jaycee Bradley	G	South Dakota				
	Emily Clemens	G	Western Illinois				
Dec. 19	Mikaela Shaw	G	Omaha				
Dec. 26	Mikale Rogers	C	IUPUI				
Jan. 2	Allison Arens	G	South Dakota				
Jan. 9	Taylor Higginbotham	G	Western Illinois				
Jan. 17	Morgan Blumer	G	Western Illinois				
Jan. 23	Madison Guebert	G	South Dakota State				

## SUMMIT LEAGUE COMPOSITE SCHEDULE

### Wednesday, December 28

Ind.-Northwest 36, IUPUI 89  
 Denver 64, South Dakota 70  
 South Dakota State 69, North Dakota State 66  
 Oral Roberts 67, Omaha 65

### Saturday, December 31

North Dakota State 86, Denver 80  
 South Dakota State 62, South Dakota 65  
 Western Illinois 52, IUPUI 66

### Sunday, January 1

York (Neb.) 37, Omaha 106

### Wednesday, January 4

South Dakota 73, North Dakota State 83

### Thursday, January 5

IUPUI 44, Omaha 64  
 Denver 62, Western Illinois 87

### Saturday, January 7

IUPUI 62, South Dakota 75  
 Omaha 64, South Dakota State 76  
 Oral Roberts 72, Western Illinois 76

### Wednesday, January 11

IUPUI 49, South Dakota State 68  
 Western Illinois 78, Omaha 74  
 South Dakota 69, Oral Roberts 47

### Saturday, January 14

South Dakota State 78, Oral Roberts 57  
 Denver 71, IUPUI 49  
 South Dakota 60, Omaha 52  
 North Dakota State 81, Western Illinois 110

### Wednesday, January 18

Omaha 80, North Dakota State 60  
 South Dakota State 72, Denver 63

### Thursday, January 19

Oral Roberts 41, IUPUI 53

### Saturday, January 21

Western Illinois 58, South Dakota State 73  
 Omaha 82, Denver 73  
 North Dakota State 58, IUPUI 71

### Wednesday, January 25

IUPUI 76, Western Illinois 72  
 Denver 47, Oral Roberts 45

### Thursday, January 26

North Dakota State 48, South Dakota 80

### Saturday, January 28

Western Illinois 86, South Dakota 78  
 South Dakota State 82, Omaha 83  
 Oral Roberts 70, North Dakota State 50

### Wednesday, February 1

Western Illinois 76, Oral Roberts 62  
 South Dakota 53, Denver 44

### Thursday, February 2

Omaha 47, IUPUI 79  
 North Dakota State 44, South Dakota State 70

### Saturday, February 4

IUPUI 45, Oral Roberts 54  
 South Dakota 58, South Dakota State 70  
 Omaha 63, Western Illinois 80

### Wednesday, February 8,

Western Illinois 87, North Dakota State 60  
 Oral Roberts 35, South Dakota State 82  
 IUPUI 67, Denver 45

### Saturday, February 11

Omaha 64, Oral Roberts 49  
 South Dakota State 59, IUPUI 64  
 Western Illinois 80, Denver 68

### Wednesday, February 15

South Dakota State 77, Western Illinois 83  
 Denver 58, North Dakota State 67  
 Oral Roberts 50, South Dakota 79

### Saturday, February 18

Omaha at South Dakota 2 P.M.  
 IUPUI at North Dakota State 2 P.M.

### Sunday, February 19

Oral Roberts at Denver 1 P.M.

### Wednesday, February 22

South Dakota at IUPUI 7 P.M.  
 North Dakota State at Omaha 8 P.M.

### Thursday, February 23

Denver at South Dakota State 8 P.M.

### Saturday, February 25

North Dakota State at Oral Roberts 1:30 P.M.  
 Denver at Omaha 3 P.M.  
 South Dakota at Western Illinois 5:30 P.M.

## FORT WAYNE AT A GLANCE

### GENERAL INFO

Address	2101 E. Coliseum Blvd.
City/Zip	Fort Wayne, IN / 46805
Founded	1964
Enrollment	13,459
Nickname	Mastodons
Colors	Royal Blue and White
Affiliation	NCAA Division I
Conference	The Summit League
Chancellor	Vicky Carwein
Athletic Director	Kelley Hartley Hutton

### MEDIA SERVICES

Asst. Director / WBB Contact	Brian Alden
E-mail	aldenbs@ipfw.edu
Office Phone	(260) 481-6646
Cell Phone	(859) 468-8963
Office Fax	(260) 481-6002

### COACHING STAFF

Head Coach	Niecee Nelson
Alma Mater 'Yr.	Concordia Portland '02
Record at School/Yrs.	5-21 / 1st
Career Record/Yrs.	Same
Assistant Coach	Ty Shaw (1st season)
Alma Mater 'Yr.	Albertson '02
Assistant Coach	Marcie Alberts (4th season)
Alma Mater 'Yr.	Ohio State '97
Assistant Coach	Carol Duncan (1st season)
Alma Mater 'Yr.	Purdue '06
Graduate Assistant Coach	Haley Seibert (2nd season)
Alma Mater 'Yr.	IPFW '15

### SEASON IN REVIEW

2015-16 Overall Record	7-23
2015-16 Summit Record/Finish	3-13 / 7th
Letterwinners Returning/Lost	6 / 6
Starters Returning/Lost	3 / 2

### HISTORY

First Year of Basketball	1976-77
First Year of NCAA Division I Basketball	2001-02
First Year in The Summit League	2007-08
All-Time Record	462-622
All-Time Division I Record	155-305
All-Time Summit League Record	70-96
All-time NCAA Tournament Record	0-3
Years in Post-Season play	12
Last Post-Season Game	2013-14 (WBI)
Result	L, 84-71 at UIC

First Varsity Game	12/9/76 at Huntington; L, 41-38
500th Game	1/9/97 at Saint Joseph's (IN); W, 73-61
750th Game	1/25/06 vs. Butler; L, 70-60
1,000th Game	3/19/14 at UIC; L, 84-71

First Program Victory	12/11/76 vs. Grace; W, 72-31
250th Program Victory	2/10/96 at Kentucky Wesleyan; W, 91-76

FORT WAYNE MASTODONS ROSTER

No.	Name	Ht.	Pos.	Cl.	Hometown	High School / Previous School
1	Yuleska Ramirez-Tejeda ( <i>YOU-less-kuh</i> )	5-7	G	Fr.	Cambridge, Mass.	Cambridge Rindge and Latin
2	Nia Thomas ( <i>KNEE-uh</i> )	5-8	G	So.	Liberty Township, Ohio	Lakota East / Lincoln Trail College
3	KeShyra McCarver ( <i>Key-SHY-Ruh</i> )	5-10	F	Jr.	Toledo, Ohio	Whitmer
5	Hannah Hess	5-9	G	Fr.	Oregon, Ohio	Clay
12	Anna Lappenküper ( <i>AHH-nuh LAH-pen-cooper</i> )	5-8	G	Fr.	Herne, Germany	Otto Hahn Gymnasium
13	De'Jour Young ( <i>D-zhur</i> )	5-7	G	So.	Fort Wayne, Ind.	Concordia Lutheran
15	Selena Lozada ( <i>Lo-zaah-duh</i> )	6-2	F	Sr.	Perth Amboy, N.J.	Western Guilford / Guilford Technical CC
21	Isis Parker	6-0	F	So.	Cleveland, Ohio	Solon
22	Zaria Atkins ( <i>ZAR-ee-uh</i> )	5-7	G	Fr.	Dudley, N.C.	Southern Wayne
23	Peyton Fallis ( <i>Fau-liss</i> )	5-10	G	So.	Indianapolis, Ind.	Heritage Christian
31	Rachel Rinehart	5-8	G	Sr.	Angola, Ind.	Angola

<b>Head Coach:</b> Niecee Nelson ( <i>KNEE-see</i> )
<b>Assistant Coaches:</b> Marcie Alberts, Carol Duncan and Ty Shaw
<b>Graduate Assistant Coach:</b> Haley Seibert ( <i>sigh-BERT</i> )

SOUTH DAKOTA STATE JACKRABBITS ROSTER

No.	Name	Ht.	Pos.	Cl.	Hometown	High School / Previous School
0	Chynna Stevens	F	6-0	R-Jr.	Clark, S.D.	Clark-Willow Lake
1	Alexis Alexander	G	5-7	Jr.	Brooklyn Park, Minn.	Champlin Park
3	Annabel Graettinger	G	5-10	R-Fr.	Muscatine, Iowa	Muscatine
10	Kerri Young	G	6-0	Sr.	Mitchell, S.D.	Mitchell
11	Madison Guebert	G	5-8	So.	Apple Valley, Minn.	Eastview
12	Macy Miller	G	6-0	Jr.	Mitchell	Mitchell
20	Ena Viso	G	5-11	Sr.	Copenhagen, Denmark	BK Amager / Northeast CC
21	Clarissa Ober	C	6-2	Sr.	Glencoe, Minn.	Glencoe-Silver Lake
24	Tagyn Larson	F	6-2	R-Fr.	Sioux Falls, S.D.	Roosevelt / Iowa
32	Sydney Palmer	G	5-11	So.	Pierre, S.D.	Pierre T.F. Riggs
33	Sydney Tracy	G	6-0	Fr.	St. Michael, Minn.	St. Michael-Albertsville
35	Tiffaney Flaata	F	6-2	Jr.	Savage, Minn.	Prior Lake
43	Jessica Mieras	C	6-3	So.	Sioux Falls, S.D.	O'Gorman
45	Ellie Thompson	F	6-1	Jr.	Chaska, Minn.	Chaska
50	Megan Bultsma	C	6-3	Fr.	Plankinton, S.D.	Mt. Vernon/Plankinton

<b>Head Coach:</b> Aaron Johnston
<b>Assistant Coaches:</b> Mike Jewett, Katie Falco and Haylie Linn

All-Time Results vs. South Dakota State

1/29/2005	H	SOUTH DAKOTA STATE	L, 73-90	Fort Wayne, Ind.
1/19/2006	A	South Dakota State	L, 53-74	Brookings, S.D.
2/24/2006	H	SOUTH DAKOTA STATE	L, 52-72	Fort Wayne, Ind.
2/10/2007	A	South Dakota State	L, 51-103	Brookings, S.D.
3/1/2007	H	SOUTH DAKOTA STATE	L, 58-70	Fort Wayne, Ind.
1/5/2008	A	South Dakota State	L, 62-68	Brookings, S.D.
2/4/2008	H	SOUTH DAKOTA STATE	L, 72-74 (OT)	Fort Wayne, Ind.
1/3/2009	H	#21 SOUTH DAKOTA STATE	L, 48-71	Fort Wayne, Ind.
2/2/2009	A	#19 South Dakota State	L, 56-83	Brookings, S.D.
1/25/2010	A	South Dakota State	L, 62-83	Brookings, S.D.
2/20/2010	H	SOUTH DAKOTA STATE	L, 65-76	Fort Wayne, Ind.
3/7/2010	N	South Dakota State	L, 52-93	Sioux Falls, S.D.
1/22/2011	A	South Dakota State	W, 70-67 (OT)	Brookings, S.D.
2/21/2011	H	SOUTH DAKOTA STATE	L, 47-50	Fort Wayne, Ind.
3/7/2011	N	South Dakota State	L, 67-70	Sioux Falls, S.D.
12/31/2011	A	South Dakota State	L, 58-81	Brookings, S.D.
1/28/2012	H	SOUTH DAKOTA STATE	L, 66-76	Fort Wayne, Ind.
3/3/2012	N	South Dakota State	L, 59-80	Sioux Falls, S.D.
1/12/2013	H	SOUTH DAKOTA STATE	L, 64-66	Fort Wayne, Ind.
2/7/2013	A	South Dakota State	L, 62-72	Brookings, S.D.
3/11/2013	N	South Dakota State	L, 59-86	Sioux Falls, S.D.
1/11/2014	A	South Dakota State	L, 60-77	Brookings, S.D.
2/6/2014	H	SOUTH DAKOTA STATE	L, 66-77	Fort Wayne, Ind.
1/10/2015	H	SOUTH DAKOTA STATE	L, 64-65	Fort Wayne, Ind.
2/8/2015	A	South Dakota State	L, 68-89	Brookings, S.D.
1/13/2016	H	SOUTH DAKOTA STATE	L, 42-61	Fort Wayne, Ind.
2/13/2016	A	South Dakota State	L, 64-92	Brookings, S.D.
3/5/2016	N	South Dakota State	L, 60-80	Sioux Falls, S.D.
1/5/2017	A	South Dakota State	L, 51-73	Brookings, S.D.

**Overall:** 1-28  
**League:** 1-18  
**Home:** 0-12  
**Away:** 1-11  
**Neutral:** 0-5

ON THIS DATE...

FEBRUARY 18 (6-5)

2012	ORAL ROBERTS	L, 61-62 OT
2006	TEXAS-PAN AMERICAN	W, 62-46
2003	AT TEXAS-PAN AMERICAN	L, 57-71
1999	LEWIS	L, 52-67
1995	SAINT JOSEPH'S (IN)	L, 81-84
1993	AT KENTUCKY STATE	W, 107-41
1989	AT KENTUCKY WESLEYAN	W, 90-66
1988	AT #6 NORTHERN KENTUCKY	L, 64-79
1984	GOSHEN	W, 75-45
1981	GRACE (IN)	W, 53-51
1978	VALPARAISO	W, 61-48

ALL-TIME IN FEBRUARY...

BY DAY AND LOCATION

Sunday	1-5
Monday	9-15
Tuesday	13-9
Wednesday	10-8
Thursday	38-52
Friday	3-4
Saturday	66-72
Home	85-60
Away	52-103
Neutral	3-2

ALL-TIME RECORD...

BY DAY OF THE WEEK

Sunday	14-41
Monday	36-52
Tuesday	45-59
Wednesday	37-48
Thursday	104-125
Friday	32-52
Saturday	190-243

ALL-TIME RECORD...

BY MONTH

November	60-84
December	110-141
January	135-204
February	140-163
March	17-29

Fort Wayne vs.

SUMMIT LEAGUE	All-Time	Under Nelson
Denver	3-6	0-2
IUPUI	12-18	0-1
North Dakota State	9-16	1-1
Omaha	5-5	1-1
Oral Roberts	5-12	0-2
South Dakota	3-10	0-2
South Dakota State	1-28	0-1
Western Illinois	10-10	0-1
<b>TOTALS</b>	<b>48-108</b>	<b>2-11</b>

# HEAD COACH NIECEE NELSON

Niecee Nelson was appointed as Fort Wayne's women's basketball head coach on April 18, 2016. An assistant coach at the University of San Diego for 11 seasons, she is the 14th head coach in the 40-year history of the program. Nelson is no stranger to Fort Wayne, however, having served as an assistant coach for the Mastodons for one season during 2004-05, after getting her start in coaching as a graduate assistant at the University of Wyoming for two seasons (2002-04).

Nelson helped lead San Diego to an overall record of 222-124 since 2005, including five consecutive 20-win seasons and postseason WNIT appearances. The Toreros, under the direction of head coach Cindy Fisher, made one NCAA Tournament appearance since '05, winning the WCC Tournament in 2008, and have made six overall appearances in the WNIT, first advancing to the event in 2007. USD was 25-8 in 2015-16, tying for the second-most wins in program history while advancing to the third round of the WNIT.

Nelson's on court responsibilities at USD included point guard and shooting guard development, while serving as the program's offensive coordinator. She has helped develop 13 All-WCC First Team guards, including Dominique Conners, a three-time honoree and USD's all-time leader in points and steals. Nelson also helped develop Amanda Rego, the program's only WCC Player of the Year (2006-07), who was the national assist leader that season, and is the school's career leader in assists.

Nelson's off court responsibilities at USD included serving as the program's academic coordinator, budget management and ordering of team equipment, including uniforms and apparel, as well as managing team travel. Additionally, she shared in the duties of recruiting as well as the opponent scouting and game strategy. Nelson has also assisted in creating practice plans and individual workouts.

Nelson was an assistant at Fort Wayne during 2004-05, with primary responsibilities in team travel, post player development, marketing and academic support. Within two months of arriving at Fort Wayne, she was promoted to recruiting coordinator, leading the charge in overseas recruiting into Brazil and Europe.

Prior to Fort Wayne, Nelson served as a graduate assistant at Wyoming with Coach Fisher. She worked closely with the staff and team on practice and game day coaching, individual workouts, academic support, film exchange, and guard and post development.

Nelson earned 2001 NAIA All-America honors at Concordia University in Portland, Oregon. A two-time team captain, she was named to the 2001 Lutheran Brotherhood All-America Team. Nelson was a two-time All-Cascade Conference First Team selection (2001, 2002), and the 1998 Cascade Conference Freshman of the Year.

Nelson graduated from Concordia in 2002 with a Bachelor of Arts degree in Education with an emphasis in Elementary Education, adding minors in Business Marketing and Psychology. She earned a Master of Science degree in Kinesiology and Health with an emphasis in Health Promotion from Wyoming in 2004.

Niecee and her husband, Steve, have two children: son Sebastian and daughter Skyler.

# FORT WAYNE IN SUMMIT LEAGUE AND NCAA STATISTICS

TEAM	(of 345)		(of 9)
	Statistic	NCAA	Summit
Assist Turnover Ratio	0.62	294	9
Assists	258	311	9
Assists Per Game	9.9	325	9
Blocked Shots	39	332	9
Blocked Shots Per Game	1.5	333	9
Fewest Fouls	490	282	8
Fewest Turnovers	414	211	8
Field-Goal Percentage	38.6	229	9
Field-Goal Percentage Defense	48.9	344	9
Free Throw Attempts	421	200	6
Free Throws Made	318	117	6
Free-Throw Percentage	75.5	31	4
Personal Fouls Per Game	18.8	248	8
Rebound Margin	-4.3	291	9
Rebounds	759	337	9
Rebounds Per Game	29.19	344	9
Scoring Defense	70.3	297	8
Scoring Margin	-13.3	324	9
Scoring Offense	57	306	9
Steals	175	231	5
Steals Per Game	6.7	256	5
Three Pt FG Defense	39.8	344	9
Three-Point Field Goals Made	83	333	9
Three-Point Field Goals Per Game	3.2	338	9
Three-Point Field-Goal Percentage	27.3	310	9
Turnover Margin	-0.88	215	5
Turnovers Forced	15.04	232	4
Turnovers Per Game	15.9	180	8

## INDIVIDUAL

	NCAA	Summit
<b>Free-Throw Percentage</b>		
Zaria Atkins	85.5	34
De'Jour Young	85.2	39
<b>Steals Per Game</b>		
Rachel Rinehart	1.81	210
As 2/17/2017		
* NCAA rank does not include schools reclassifying		

Gates Center Attendance Records			
1.	1/19/2002	Toledo	1,827
2.	12/10/2006	Indiana	1,801
3.	11/19/2004	Bowling Green	1,438
4.	12/29/2013	Ball State	1,278
5.	1/24/2015	Denver	1,215
6.	1/13/1996	Southern Indiana	1,150
7.	12/6/2014	Northern Kentucky	1,147
8.	12/6/2012	Purdue	1,124
9.	11/12/2013	Indiana	1,085
10.	11/11/2016	Belmont	1,049

# Season and Career Totals

2016-17 Career

<b>DOUBLE-DOUBLES</b>		
De'Jour Young	2	2
KeShyra McCarver	-	1

<b>30-PLUS POINT GAMES</b>		
Rachel Rinehart	-	1

<b>20-PLUS POINT GAMES</b>		
Rachel Rinehart	1	5
KeShyra McCarver	-	3
Peyton Fallis	1	1
De'Jour Young	1	1

<b>DOUBLE-DIGIT SCORING GAMES</b>		
Rachel Rinehart	13	38
De'Jour Young	19	24
Zaria Atkins	10	10
KeShyra McCarver	4	9
Anna Lappenküper	7	7
Selena Lozada	4	6
Peyton Fallis	3	5
Lindley Kistler	1	1
Yuleska Ramirez-Tejeda	1	1

<b>10-PLUS REBOUND GAMES</b>		
De'Jour Young	2	3
KeShyra McCarver	-	1
Rachel Rinehart	1	1

<b>5-PLUS ASSIST GAMES</b>		
Rachel Rinehart	4	17
De'Jour Young	3	3
Zaria Atkins	3	3
Anna Lappenküper	2	2

<b>3-PLUS STEAL GAMES</b>		
Rachel Rinehart	7	15
De'Jour Young	2	6
KeShyra McCarver	1	4
Peyton Fallis	-	2
Zaria Atkins	2	1
Yuleska Ramirez-Tejeda	1	1
Anna Lappenküper	1	1

<b>3-PLUS THREE-POINT FG GAMES</b>		
KeShyra McCarver	-	3
Rachel Rinehart	1	3
Peyton Fallis	1	2
Lindley Kistler	1	1
Anna Lappenküper	1	1
Zaria Atkins	1	1

<b>STARTS</b>		
Rachel Rinehart	25	78
De'Jour Young	26	46
KeShyra McCarver	16	37
Selena Lozada	20	25
Anna Lappenküper	21	21
Zaria Atkins	20	20
Isis Parker	1	2
Peyton Fallis	1	2

<b>5-5-5 GAMES</b>		
At least 5 in three categories (pts, rbs, ast, stl or blk)		
Rachel Rinehart	2	6
De'Jour Young	3	3



## Single Game Stat Leaders

2016-17 Career

### TEAM LEADER IN POINTS

De'Jour Young	14	14
Rachel Rinehart	4	11
Zaria Atkins	4	4
KeShyra McCarver	1	3
Selena Lozada	2	2
Lindley Kistler	1	1
Peyton Fallis	1	1
Anna Lappenküper	1	1

### TEAM LEADER IN REBOUNDS

De'Jour Young	14	20
Rachel Rinehart	3	13
KeShyra McCarver	4	10
Selena Lozada	5	6
Isis Parker	1	2
Lindley Kistler	1	1
Zaria Atkins	1	1
Anna Lappenküper	1	1

### TEAM LEADER IN ASSISTS

Rachel Rinehart	13	37
De'Jour Young	8	12
Zaria Atkins	9	9
Anna Lappenküper	4	4
KeShyra McCarver	-	3
Peyton Fallis	2	2
Isis Parker	1	1

### TEAM LEADER IN STEALS

Rachel Rinehart	11	37
De'Jour Young	6	13
Zaria Atkins	7	7
KeShyra McCarver	5	5
Anna Lappenküper	5	5
Peyton Fallis	1	3
Selena Lozada	4	4
Yuleska Ramirez-Tejeda	2	2
Isis Parker	1	1
Nia Thomas	1	1

### TEAM LEADER IN BLOCKS

Selena Lozada	11	13
De'Jour Young	6	10
KeShyra McCarver	3	7
Isis Parker	5	7
Rachel Rinehart	2	4
Lindley Kistler	2	2
Anna Lappenküper	2	2
Peyton Fallis	-	1
Yuleska Ramirez-Tejeda	1	1

### POINTS OFF THE BENCH

KeShyra McCarver	5	11
Peyton Fallis	6	10
Rachel Rinehart	1	8
Isis Parker	4	5
Yuleska Ramirez-Tejeda	5	5
De'Jour Young	-	3
Anna Lappenküper	3	3
Selena Lozada	3	3
Lindley Kistler	1	1
Zaria Atkins	1	1
Nia Thomas	1	1

## Miscellaneous Game Stats

### SCORES FIRST

Fort Wayne	5
Opponents	21

### HOW FORT WAYNE SCORED FIRST POINT

Free Throw	4
Jumper	6
Layup	15
Three-Pointer	1

### FIRST FORT WAYNE POINT SCORED BY

De'Jour Young	7
KeShyra McCarver	6
Rachel Rinehart	4
Anna Lappenküper	3
Peyton Fallis	2
Zaria Atkins	2
Isis Parker	1
Selena Lozada	1

### SCORING RUNS OF 10-0 OR BETTER

Fort Wayne	4
Opponents	17

### TIP-OFFS CONTROLLED

Fort Wayne	7
Opponents	19

Selena Lozada 4/20 (.200)

KeShyra McCarver 3/6 (.500)

### FORT WAYNE'S FIRST SUBSTITUTION

Isis Parker	11
Peyton Fallis	9
Anna Lappenküper	3
Yuleska Ramirez-Tejeda	3
KeShyra McCarver	3
Zaria Atkins	1
Lindley Kistler	1
Selena Lozada	1

### PLAYERS FOULED OUT

Fort Wayne	14
Opponents	6

Isis Parker	5
Rachel Rinehart	3
Anna Lappenküper	2
KeShyra McCarver	2
Selena Lozada	1
Peyton Fallis	1

### THREE- AND FOUR-POINT PLAYS

Fort Wayne	22
Opponents	25

Rachel Rinehart	9	28
KeShyra McCarver	2	12
De'Jour Young	4	7
Zaria Atkins	4	4
Selena Lozada	3	3
Peyton Fallis	1	2
Isis Parker	1	2
Yuleska Ramirez-Tejeda	1	1

### BENCH POINTS

Fort Wayne	375 (14.4 ppg.)
Opponents	487 (18.7 ppg.)

### LARGEST HALFTIME LEAD

12 (35-23) vs Defiance (11/12/16)

### LARGEST HALFTIME DEFICIT

28 (45-17) vs Miami (Ohio) (12/19/16)

### LARGEST WIN

18 (76-58) vs Defiance (11/12/16)

### LARGEST DEFEAT

28 (2 times)

MR - (78-50) at Denver (2/4/17)

### LARGEST LEAD

19 (42-23, 7:06, 3rd) vs Defiance (11/12/16)

### LARGEST DEFICIT

34 (44-10, 2:43, 2nd) vs Miami (Ohio) (12/19/16)

### LARGEST DEFICIT OVERCOME TO WIN

10 (31-21, 4:48, 2nd) vs North Dakota State (2/11/17)

### LARGEST LEAD GIVEN UP IN LOSS

10 (2 times)

MR - (27-17, 7:07, 2nd) vs. Oakland (11/19/16)

### MOST CONSECUTIVE POINTS

11 (3 times)

MR - (6:07 - 2:34 1st) at South Dakota State (11/5/17)

### MOST CONSECUTIVE POINTS BY OPP.

19 (2:28 1st - 5:32 2nd) vs Miami (Ohio) (12/19/16)

### LONGEST WINNING STREAK

-

### LONGEST LOSING STREAK

7 (2 times)

MR - (12/28/16-1/21/17)

### LARGEST HOME CROWD

1,789 vs Coastal Carolina (11/26/16)

### LARGEST ROAD CROWD

1,611 at South Dakota (1/18/17)

### MOST TIME LEADING

36:48 vs Defiance (11/12/16)

### MOST TIME LEADING IN LOSS

19:41 vs Denver (1/12/17)

### MOST TIME WITH SCORE TIED

9:07 vs. Omaha (1/25/17)

### MOST TIME TRAILING

39:50 at Oral Roberts (12/31/16)

### MOST LEAD CHANGES

10 vs Trine (11/14/16)

### MOST TIE SCORES

12 vs. Omaha (1/25/17)

## STARTING LINEUPS

Game	G	G	G	G/F	F
Indiana Tech (Ex)	Lappenküper	Young	Rinehart	Parker	Lozada
Belmont	Lappenküper	Young	Rinehart	Parker	Lozada
Defiance	Lappenküper	Young	Rinehart	McCarver	Lozada
Trine	Lappenküper	Young	Rinehart	McCarver	Lozada
at Butler	Lappenküper	Young	Rinehart	McCarver	Lozada
Oakland	Lappenküper	Young	Rinehart	Fallis	McCarver
Coastal Carolina	Lappenküper	Young	Rinehart	McCarver	Lozada
at Kent State	Lappenküper	Young	Atkins	McCarver	Lozada
at Illinois	Atkins	Young	Rinehart	McCarver	Lozada
at Western Michigan	Atkins	Young	Rinehart	McCarver	Lozada
at UIC	Atkins	Young	Rinehart	McCarver	Lozada
vs. Miami (Ohio)	Atkins	Young	Rinehart	McCarver	Lozada
at Wright State	Atkins	Young	Rinehart	Lappenküper	McCarver
vs. Eastern Kentucky	Atkins	Young	Rinehart	McCarver	Lozada
Western Illinois	Atkins	Young	Rinehart	Lappenküper	McCarver
at Oral Roberts	Atkins	Young	Rinehart	Lappenküper	McCarver
at South Dakota State	Atkins	Young	Rinehart	Lappenküper	McCarver
at North Dakota State	Atkins	Young	Rinehart	Lappenküper	McCarver
Denver	Atkins	Young	Rinehart	Lappenküper	Lozada
at South Dakota	Atkins	Young	Rinehart	Lappenküper	Lozada
Oral Roberts	Atkins	Young	Rinehart	Lappenküper	Lozada
Omaha	Atkins	Young	Rinehart	Lappenküper	Lozada
IUPUI (Pink Out)	Atkins	Young	Rinehart	Lappenküper	Lozada
at Denver	Atkins	Young	Rinehart	Lappenküper	Lozada
South Dakota	Atkins	Young	Rinehart	Lappenküper	Lozada
North Dakota State	Atkins	Young	Rinehart	Lappenküper	Lozada
at Omaha	Atkins	Young	Rinehart	Lappenküper	Lozada
South Dakota State					
at Western Illinois					
at IUPUI					

## BY ROTATION

0-1	Lappenküper	Young	Rinehart	Parker	Lozada
1-3	Lappenküper	Young	Rinehart	McCarver	Lozada
0-1	Lappenküper	Young	Rinehart	Fallis	McCarver
0-1	Lappenküper	Young	Atkins	McCarver	Lozada
2-3	Atkins	Young	Rinehart	McCarver	Lozada
0-5	Atkins	Young	Rinehart	Lappenküper	McCarver
2-7	Atkins	Young	Rinehart	Lappenküper	Lozada

## Fort Wayne vs.

16-17 OPPONENTS	All-Time	Under Nelson
Belmont	0-3	0-1
Butler	4-6	0-1
Coastal Carolina	2-2	0-1
Defiance	1-1	1-0
Denver	3-6	0-2
Eastern Kentucky	1-1	1-0
Illinois	0-5	0-1
IUPUI	12-18	0-1
Kent State	1-1	0-1
Miami (Ohio)	1-2	0-1
North Dakota State	9-16	1-1
Oakland	8-16	0-1
Omaha	5-5	1-1
Oral Roberts	5-12	0-2
South Dakota	3-10	0-2
South Dakota State	1-28	0-1
Trine	16-5	0-1
UIC	1-3	1-0
Western Illinois	10-10	0-1
Western Michigan	1-4	0-1
Wright State	5-8	0-1
<b>TOTALS</b>	<b>89-162</b>	<b>5-21</b>

## WHY MASTODONS?...

It all started about 10,000 years ago...

That's when mastodons roamed the southern Great Lakes region of North America. These stocky versions of modern elephants reached heights of about ten feet at the shoulder, with tusks that curved upward that were six feet or more in length. Mastodons were browsers who fed mostly on leaves and twigs from small trees and shrubs.

One such mastodon found its final resting place about two miles south of Angola, Indiana, on land that would eventually become part of Orsie Routsong's farm. In the fall of 1968, Routsong decided to expand a small pond on his property. An excavator was hired and instructed to pile the excavated material around the edge of the pond. Several days after the excavation was finished a heavy rain storm pounded the piles of dirt.

The next day, a young neighbor boy of Routsong's discovered a large bone in one of the dirt piles. Routsong knew it was something out of the ordinary, so he called Jack Sunderman, chair of the IPFW Geology Department, to identify the bone, and to ask for advice on what to do with it. Sunderman says his first question was, "How big is the bone," with Routsong's answer being "pretty big, maybe 3 or 4 feet long."

When Sunderman got to the farm, he identified the bone as a leg bone of a mastodon. He told Routsong a skeleton like this would have scientific and instructional value if a large portion of it could be located. Routsong agreed, and also agreed to have the IPFW Geology Department do the excavation. Sunderman got two more faculty members, Geoffrey Matthews and Bernd Erdtmann, and several geology students to help in the project.

After all the mastodon bones were collected, cleaned, and preserved, Routsong agreed to have the adult mastodon skeleton placed on permanent display at IPFW; the skull of a nearby baby mastodon is now on loan to Science Central.

In the spring of 1970, The Communicator (IPFW's student newspaper) began a drive to come up with a mascot for IPFW. Some of the suggested choices included the Boiler-Hoosiers, Warhawks, Marauders, Frontiersmen, Pioneers, Elfs, and Hobbits. Those names and others came from student suggestions. Steve Pettyjohn, who served as the student body president in 1968-69, wrote a letter to the editor about the school mascot. In his letter, Pettyjohn extolled the virtues of choosing the mastodon as IPFW's mascot: "It sounds different, strange - that's exactly why. It's different and yes, even strange. For God's Sakes, let's have the courage to be a little different."

In the meantime, former Indiana Congressman Mark Souder, who served as student body president in 1969-70, recalls being lobbied by the Geology Club to choose the mastodon.

According to Nusbaumer, "Souder appointed a committee in student government to select a name although he was lobbying hard for the mastodon." After some discussion on the subject, Souder says a vote was taken by the committee and the mastodon came out the winner. Souder finished his recollection with these thoughts. "History shows that the advocacy of the geology club was correct. The fast, decisive action of the elected student government—though it did not please everyone and was not a precedent that the University desired to see—has also been upheld by history as IPFW regularly scores high in any list of unique university nicknames; even in this era when everybody strives to be different. We did it decades ago."

## WHAT IS A MASTODON?...

### (ACCORDING TO WIKIPEDIA)

Mastodons are any species of extinct proboscideans (mammals with tusks and long, muscular trunks) in the genus Mammut, distantly related to elephants, that inhabited North and Central America during the late Miocene or late Pliocene up to their extinction at the end of the Pleistocene 10,000 to 11,000 years ago. Mastodons lived in herds and were predominantly forest dwelling animals that fed on a mixed diet of browsing and grazing with a seasonal preference for browsing, in contrast to living elephants that are mostly grazing animals.

Modern reconstructions based on partial and skeletal remains reveal that mastodons were very similar in appearance to elephants and, to a lesser degree, mammoths, though not closely related to either one. Compared to mammoths, mastodons had shorter legs, a longer body and were more heavily muscled, a build similar to that of the current Asian elephants. The average body size of the species was around 2.3 m (7 ft 7 in) in height at the shoulders, corresponding to a large female or a small male, but large males could grow up to 2.8 m (9 ft 2 in) in height and weigh as much as 4.5 tonnes (5 short tons).

<b>FORT WAYNE WHEN...</b>	<b>2016-17</b>	<b>NELSON</b>
Overall	5-21	5-21
Home	3-9	3-9
Road	1-11	1-11
Neutral	1-1	1-1
At Memorial Coliseum	0-2	0-2
Summit League	2-11	2-11
Summit League Home	2-5	2-5
Summit League Road	0-6	0-6
Non-League	3-10	3-10
Non-League Home	1-4	1-4
Non-League Road	1-5	1-5
Following a win	0-5	0-5
Following a loss	5-15	5-15
Against top 25 (AP) teams	0-0	0-0
Against Mid-Major top 25 teams	0-3	0-3
In Overtime	0-0	0-0
In Multiple Overtimes	0-0	0-0
Regular Season Tournaments	1-2	1-2
Postseason	0-0	0-0
Wins Tip	2-5	2-5
Scores First	1-4	1-4
Leads after 1st quarter	2-4	2-4
Trails after 1st quarter	3-17	3-17
Tied after 1st quarter	0-0	0-0
Leads at half	3-3	3-3
Trails at half	2-17	2-17
Tied at half	0-1	0-1
Leading with 5:00 left	4-0	4-0
Trailing with 5:00 left	1-20	1-20
Tied with 5:00 left	0-0	0-0
Shoots 50% or better	0-0	0-0
Shoots less than 50%	5-21	5-21
Opponent shoots ≥ 50%	1-10	1-10
Opponent shoots < 50%	4-11	4-11
Shoots better than opp.	3-1	3-1
Shoots worse than opp.	2-20	2-20
Makes 5+ 3-Pt. shots	3-5	3-5
Makes 9+ 3-Pt. shots	0-0	0-0
More 3-Pt. made than opp.	3-5	3-5
Has equal 3-Pt. made	0-0	0-0
Fewer 3-Pt. made than opp.	2-16	2-16
Shoots 3-Pt. better than opp.	3-3	3-3
Shoots 3-Pt. worse than opp.	2-18	2-18
Shoots 3-Pt. 35% or better	4-6	4-6
Shoots 3-Pt. less than 35%	1-15	1-15
Opp. Shoots 3-Pt. 35% or better	1-19	1-19
Opp. Shoots 3-Pt. less than 35%	4-2	4-2
More FTs made than opp.	5-8	5-8
Has equal FTs made	0-1	0-1
Fewer FTs made than opp.	0-12	0-12
Out-rebounds opp.	4-6	4-6
Has equal rebounds	0-1	0-1
Is out-rebounded	1-14	1-14
More turnovers than opp.	2-12	2-12
Has equal turnovers as opp.	0-0	0-0
Fewer turnovers than opp.	3-9	3-9
More assists than opp.	1-2	1-2
Has equal assists	2-1	2-1
Fewer assists than opp.	2-18	2-18
More blocks than opp.	0-2	0-2
Has equal blocks	1-1	1-1
Fewer blocks than opp.	4-18	4-18
More steals than opp.	4-6	4-6
Has equal steals	0-0	0-0
Fewer steals than opp.	1-15	1-15
More fouls than opp.	1-15	1-15
Has equal fouls	0-0	0-0
Fewer fouls than opp.	4-6	4-6

Plays in the state of Indiana	5-10	5-10
Plays outside Indiana	2-11	2-11
Plays in Eastern Time Zone	4-14	4-14
Plays in Central Time Zone	1-6	1-6
Playe in Mountain Time Zone	0-1	0-1
Plays in Pacific Time Zone	0-0	0-0
Plays during the day	3-11	3-11
Plays at night (5pm or later)	2-10	2-10
Plays in November	1-6	1-6
Plays in December	2-6	2-6
Plays in January	1-6	1-6
Plays in February	1-3	1-3
Plays in March	0-0	0-0
Plays on Sunday	0-0	0-0
Plays on Monday	0-2	0-2
Plays on Tuesday	0-2	0-2
Plays on Wednesday	2-5	2-5
Plays on Thursday	0-3	0-3
Plays on Friday	0-2	0-2
Plays on Saturday	3-7	3-7
Attendance is ≤ 999	5-15	5-15
Attendance is ≥ 1,000	0-6	0-6
Margin is 1 point	0-0	0-0
Margin is between 2-5	2-0	2-0
Margin is between 6-10	2-3	2-3
Margin is between 11-20	1-7	1-7
Margin is more than 20	0-10	0-10
Scores ≤ 49 pts.	0-5	0-5
Scores 50-59 pts.	0-12	0-12
Scores 60-69 pts.	3-2	3-2
Scores 70-79 pts.	2-2	2-2
Scores 80-89 pts.	0-0	0-0
Scores 90-99 pts.	0-0	0-0
Scores 100+ pts.	0-0	0-0
Opponent Scores ≤ 49 pts.	0-0	0-0
Opponent scores 50-59 pts.	3-1	3-1
Opponent scores 60-69 pts.	2-7	2-7
Opponent scores 70-79 pts.	0-7	0-7
Opponent scores 80-89 pts.	0-6	0-6
Opponent scores 90-99 pts.	0-0	0-0
Opponent scores 100+ pts.	0-0	0-0
Force 20 or more turnovers	1-3	1-3
Make 10 or more steals	2-3	2-3
1 or more 20+ point scorer	0-4	0-4
No 20+ point scorer	5-17	5-17
≤ 2 players score 10+ pts.	2-13	2-13
3 players score 10+ pts.	0-7	0-7
4+ players score 10+ pts.	3-1	3-1
≥ 1 player with 10+ reb.	0-3	0-3
≥ 1 player with double-double	0-2	0-2
≥ 1 player with 5+ 3-Pt. made	0-0	0-0
No player with 5+ 3-Pt. made	5-21	5-21
No IPFW player fouls out	2-12	2-12
1+ IPFW player fouls out	3-9	3-9
More bench points	2-6	2-6
Has equal bench points	0-0	0-0
Fewer bench points	3-15	3-15
More points in the paint	3-3	3-3
Has equal points in the paint	0-1	0-1
Fewer points in the paint	2-17	2-17
More points off turnovers	2-4	2-4
Has equal points off turnovers	1-1	1-1
Fewer points off turnovers	2-15	2-15
More 2nd chance points	4-11	4-11
Has equal 2nd chance points	0-1	0-1
Fewer 2nd chance points	1-9	1-9
More fast break points	2-4	2-4
Has equal fast break points	0-4	0-4
Fewer fast break points	3-13	3-13

## BUSY MASTODONS...

The Mastodons opening weekend was a busy one as the team played three games in four days to begin the season. Fort Wayne was the only team in Division I to have played three games through the first four days of the season (Nov. 11-14).

## MAKING THE ROUNDS...

Of the current 32 Division I basketball conferences, Fort Wayne has taken on at least one school, currently or when they played, in all but four of those leagues. The four remaining conferences the Mastodons have yet to play are: Colonial Athletic Association, Ivy League, Southwestern Athletic Conference, and West Coast Conference. Three other leagues (Big Sky Conference, Pacific 12 Conference, and Southland Conference) Fort Wayne played a current member while they were a part of another conference.

## SEASON OPENERS...

The Fort Wayne women's basketball team has an all-time record of 16-25 in its season openers, after falling to Belmont on Nov. 11.

## SUMMIT LEAGUE PRESEASON POLL...

Fort Wayne was picked to finish ninth in the Summit League preseason poll of the league's head coaches. The Mastodons received 80 points as coaches were not allowed to vote for their own teams.

South Dakota State was tabbed as the preseason favorite to win the 2016-17 Summit League Championship, receiving 30 first-place votes to finish atop the poll with 542 points.

### 2016-17 Summit League Preseason Poll

Place	Team	Points (1st)
1.	South Dakota State	542 (30)
2.	IUPUI	438
3.	South Dakota	393 (3)
4.	Oral Roberts	391 (1)
5.	Omaha	325
6.	Western Illinois	250
7.	North Dakota State	156
8.	Denver	150
9.	Fort Wayne	80

### Preseason Player of the Year:

Macy Miller, South Dakota State

### First Team

Name	School	Pos.	Year
Danielle Lawrence	IUPUI	G	Jr.
Macy Miller	South Dakota State	G	Jr.
Clarissa Ober	South Dakota State	C	Sr.
Mikale Rogers	IUPUI	C	Sr.
Mikaela Shaw	Omaha	F	Sr.
Ellie Thompson	South Dakota State	F	Jr.

### Second Team

Name	School	Pos.	Year
Madison Guebert	South Dakota State	G	So.
Faith Ihim	Oral Roberts	F	Jr.
Kaylan Mayberry	Oral Roberts	G	Sr.
Taylor Thunstedt	North Dakota State	G	Jr.
Kerri Young	South Dakota State	G/F	Sr.



## FORT WAYNE INDIVIDUAL GAME HIGHS

Points	22	Peyton Fallis at Butler (11/16/16)
Field Goals Made	10	Rachel Rinehart vs Oral Roberts (01/21/17)
Field Goal Att.	18	De'Jour Young vs Western Illinois (12/28/16)
FG Pct (min 6 made)	.750 (6-8)	Zaria Atkins vs North Dakota State (02/11/17)
3-Point FG Made	4	Peyton Fallis at Butler (11/16/16)
3-Point FG Att.	10	Anna Lappenkuper at South Dakota State (01/05/17)
3-Pt FG Pct (min 2 made)	1.000 (2-2)	Zaria Atkins vs Denver (01/12/17)
	1.000 (2-2)	Zaria Atkins at Kent State (11/30/16)
	1.000 (2-2)	KeShyra McCarver vs Belmont (11/11/16)
Free Throws Made	9	Zaria Atkins vs Eastern Kentucky (12/21/16)
Free Throw Att.	11	Rachel Rinehart at UIC (12/10/16)
FT Pct (min 9 made)	1.000 (9-9)	Zaria Atkins vs Eastern Kentucky (12/21/16)
Rebounds	11	De'Jour Young at Denver (02/04/17)
	11	De'Jour Young vs Denver (01/12/17)
Assists	6	Zaria Atkins vs Omaha (01/25/17)
	6	Rachel Rinehart vs Trine (11/14/16)
Steals	6	Rachel Rinehart vs Oral Roberts (01/21/17)
Blocked Shots	3	Selena Lozada vs Western Illinois (12/28/16)
Turnovers	7	Zaria Atkins vs IUPUI (01/28/17)
	7	Anna Lappenkuper vs Western Illinois (12/28/16)

## FORT WAYNE TEAM GAME HIGHS

POINTS	76	DEFIANCE (11/12/16)
FIELD GOALS MADE	30	DEFIANCE (11/12/16)
FIELD GOAL ATTEMPTS	66	at South Dakota State (01/05/17)
	66	BELMONT (11/11/16)
FIELD GOAL PERCENTAGE	.491 (26-53)	NORTH DAKOTA STATE (02/11/17)
3 PT FIELD GOALS MADE	6	at Butler (11/16/16)
	6	DEFIANCE (11/12/16)
3 PT FG ATTEMPTS	20	at South Dakota State (01/05/17)
	20	TRINE (11/14/16)
3 PT FG PERCENTAGE	.600 (6-10)	DEFIANCE (11/12/16)
FREE THROWS MADE	25	vs Eastern Kentucky (12/21/16)
FREE THROW ATTEMPTS	28	NORTH DAKOTA STATE (02/11/17)
	28	vs Eastern Kentucky (12/21/16)
FREE THROW PERCENTAGE	.944 (17-18)	at South Dakota (01/18/17)
	.944 (17-18)	at Oral Roberts (12/31/16)
REBOUNDS	40	DENVER (01/12/17)
	40	DEFIANCE (11/12/16)
ASSISTS	17	OMAHA (01/25/17)
	17	DEFIANCE (11/12/16)
STEALS	12	at North Dakota State (01/07/17)
	12	OAKLAND (11/19/16)
BLOCKED SHOTS	4	WESTERN ILLINOIS (12/28/16)
	4	TRINE (11/14/16)
TURNOVERS	25	OAKLAND (11/19/16)
FOULS	31	at Kent State (11/30/16)

## FORT WAYNE TEAM GAME LOWS

POINTS	33	at Illinois (12/02/16)
FIELD GOALS MADE	10	at Illinois (12/02/16)
FIELD GOAL ATTEMPTS	37	at Wright State (12/20/16)
FIELD GOAL PERCENTAGE	.232 (13-56)	at Western Michigan (12/06/16)
3 PT FIELD GOALS MADE	0	at Western Michigan (12/06/16)
3 PT FG ATTEMPTS	4	at Oral Roberts (12/31/16)
	4	at Omaha (02/15/17)
3 PT FG PERCENTAGE	.000 (0-13)	at Western Michigan (12/06/16)
FREE THROWS MADE	4	WESTERN ILLINOIS (12/28/16)
	4	IUPUI (01/28/17)
FREE THROW ATTEMPTS	5	WESTERN ILLINOIS (12/28/16)
FREE THROW PERCENTAGE	.500 (4-8)	IUPUI (01/28/17)
REBOUNDS	12	SOUTH DAKOTA (02/09/17)
	19	at Omaha (02/15/17)
ASSISTS	4	at Illinois (12/02/16)
	4	at Western Michigan (12/06/16)
	4	at Oral Roberts (12/31/16)
STEALS	0	DENVER (01/12/17)
BLOCKED SHOTS	0	OAKLAND (11/19/16)
	0	vs Miami (Ohio) (12/19/16)
	0	vs Eastern Kentucky (12/21/16)
	0	ORAL ROBERTS (01/21/17)
	0	IUPUI (01/28/17)
TURNOVERS	9	at South Dakota State (01/05/17)
	9	at North Dakota State (01/07/17)
	9	OMAHA (01/25/17)
	9	at Denver (02/04/17)
FOULS	11	SOUTH DAKOTA (02/09/17)

## OPPONENT INDIVIDUAL GAME HIGHS

Points	31	Kelsey Tietje vs Defiance (11/12/16)
Field Goals Made	13	Kelsey Tietje vs Defiance (11/12/16)
Field Goal Att.	22	Kelsey Tietje vs Defiance (11/12/16)
FG Pct (min 6 made)	1.000 (8-8)	Ellie Thompson at South Dakota State (01/05/17)
	1.000 (6-6)	Jenna Gunn vs IUPUI (01/28/17)
3-Point FG Made	8	Lauren Loven vs Denver (01/12/17)
3-Point FG Att.	11	Lauren Loven vs Denver (01/12/17)
3-Pt FG Pct (min 2 made)	1.000 (3-3)	Marissa Preston at Omaha (02/15/17)
	1.000 (3-3)	Jaycee Bradley vs South Dakota (02/09/17)
	1.000 (3-3)	Kaylan Mayberry at Oral Roberts (12/31/16)
Free Throws Made	12	Briana Johnson at Denver (02/04/17)
Free Throw Att.	14	Briana Johnson at Denver (02/04/17)
FT Pct (min 9 made)	1.000 (10-10)	Maria Martiane vs Oral Roberts (01/21/17)
Rebounds	14	Hannah Little vs Oakland (11/19/16)
Assists	11	Whitney Schalk vs Defiance (11/12/16)
Steals	6	Taylor Gleason vs Oakland (11/19/16)
Blocked Shots	5	Marley Hill at Western Michigan (12/06/16)
Turnovers	9	Larissa Lurken at Kent State (11/30/16)

## OPPONENT TEAM GAME HIGHS

POINTS	87	at South Dakota (01/18/17)
FIELD GOALS MADE	35	SOUTH DAKOTA (02/09/17)
FIELD GOAL ATTEMPTS	63	BELMONT (11/11/16)
FIELD GOAL PERCENTAGE	.625 (35-56)	SOUTH DAKOTA (02/09/17)
3 PT FIELD GOALS MADE	10	at Oral Roberts (12/31/16)
	10	BELMONT (11/11/16)
3 PT FG ATTEMPTS	26	BELMONT (11/11/16)
3 PT FG PERCENTAGE	.714 (10-14)	at Oral Roberts (12/31/16)
FREE THROWS MADE	25	TRINE (11/14/16)
FREE THROW ATTEMPTS	35	TRINE (11/14/16)
FREE THROW PERCENTAGE	1.000 (4-4)	SOUTH DAKOTA (02/09/17)
REBOUNDS	45	at North Dakota State (01/07/17)
	45	BELMONT (11/11/16)
ASSISTS	21	SOUTH DAKOTA (02/09/17)
STEALS	15	OAKLAND (11/19/16)
BLOCKED SHOTS	9	at Denver (02/04/17)
TURNOVERS	22	at North Dakota State (01/07/17)
FOULS	27	at UIC (12/10/16)

## OPPONENT TEAM GAME LOWS

POINTS	55	at UIC (12/10/16)
FIELD GOALS MADE	20	at UIC (12/10/16)
FIELD GOAL ATTEMPTS	42	at Omaha (02/15/17)
FIELD GOAL PERCENTAGE	.367 (22-60)	at Illinois (12/02/16)
3 PT FIELD GOALS MADE	2	COASTAL CAROLINA (11/26/16)
	2	at South Dakota State (01/05/17)
3 PT FG ATTEMPTS	5	COASTAL CAROLINA (11/26/16)
3 PT FG PERCENTAGE	.231 (3-13)	vs Eastern Kentucky (12/21/16)
FREE THROWS MADE	4	SOUTH DAKOTA (02/09/17)
FREE THROW ATTEMPTS	4	SOUTH DAKOTA (02/09/17)
FREE THROW PERCENTAGE	.500 (5-10)	at Illinois (12/02/16)
REBOUNDS	19	IUPUI (01/28/17)
ASSISTS	10	TRINE (11/14/16)
	10	at South Dakota State (01/05/17)
STEALS	3	at South Dakota State (01/05/17)
	3	at North Dakota State (01/07/17)
	3	DENVER (01/12/17)
BLOCKED SHOTS	0	COASTAL CAROLINA (11/26/16)
TURNOVERS	8	at Illinois (12/02/16)
	8	DENVER (01/12/17)
FOULS	11	BELMONT (11/11/16)

## FORT WAYNE TEAM RECORDS (MIN. 20 GAMES)

Record	
MOST WINS.....	23 (1995-96)
MOST LOSSES.....	24 (1998-99)
MOST GAMES PLAYED.....	31 (2010-11)
Points	
GAME HIGH.....	117, vs Tri-State (12/3/88)
SEASON HIGH.....	2,431 (1989-90)
GAME LOW.....	28, Indiana State (12/28/02)
SEASON LOW.....	1,110 (1978-79)
Field Goals Made	
GAME HIGH.....	48, at Southern Indiana (2/7/91)
SEASON HIGH.....	901 (1989-90)
GAME LOW.....	11, Wichita State (11/8/2013)
	11, Winthrop (12/23/05)
SEASON LOW.....	443 (1978-79)
Field Goal Attempts	
GAME HIGH.....	92, at Purdue (11/21/04)
SEASON HIGH.....	1,864 (2007-08)
GAME LOW.....	38, Wichita State (11/8/13)
SEASON LOW.....	1,263 (1978-79)
Field Goal Percentage	
GAME HIGH.....	.720 (36-of-50), at IUPUI (1/23/92)
SEASON HIGH.....	.492 (877-1782), (1991-92)
GAME LOW.....	.163 (15-of-92), Purdue (11/21/04)
LOW SEASON.....	.331 (595-1798), (2004-05)
3-Point Field Goals Made	
GAME HIGH.....	18, at Missouri-St. Louis (2/15/01)
SEASON HIGH.....	271 (2013-14)
GAME LOW.....	0, Several times
SEASON LOW.....	13 (1992-93)

3-Point Field Goal Attempts	
GAME HIGH.....	48, vs Bowling Green (11/19/04)
	48, vs Grace (12/11/99)
SEASON HIGH.....	743 (2013-14)
GAME LOW.....	0, Several times
SEASON LOW.....	59 (1992-93)
3-Point Field Goal Percentage (min. 10 att.)	
GAME HIGH.....	.800 (8-of-10), at Cleveland State (1/26/04)
SEASON HIGH.....	.430 (89-207), (1989-90)
GAME LOW.....	.000 (0-of-10), St. Joseph's (1/3/91)
LOW SEASON.....	.220 (44-200), (1997-98)
Free Throws Made	
GAME HIGH.....	42, vs NKU (12/21/95)
SEASON HIGH.....	604 (1995-96)
GAME LOW.....	1, Indianapolis (2/20/97)
	1, Indianapolis (3/6/1993)
SEASON LOW.....	214 (1979-80)
Free Throw Attempts	
GAME HIGH.....	52, vs NKU (12/21/95)
	52, at Wayne State (11/16/90)
SEASON HIGH.....	821 (1991-92)
GAME LOW.....	2, Ashland (2/20/88)
SEASON LOW.....	382 (1982-83)
Free Throw Percentage (min. 10 made/20 att.)	
GAME HIGH.....	1.000 (24-of-24), vs Indiana (11/12/13)
SEASON HIGH.....	.794 (409-515), (2012-13)
GAME LOW.....	.433 (13-of-30), Kentucky (11/21/03)
SEASON LOW.....	.483 (224-464), (1978-79)

Rebounds	
GAME HIGH.....	65, vs Shippensburg (11/19/95)
SEASON HIGH.....	1,244 (1991-92)
GAME LOW.....	18, IUPUI (3/2/13)
SEASON LOW.....	132 (1978-79)
Assists	
GAME HIGH.....	31, at Southern Indiana (2/7/91)
SEASON HIGH.....	551 (1994-95)
GAME LOW.....	1, Wichita State (11/8/13)
	1, Hampton (1/29/86)
SEASON LOW.....	125 (1980-81)
Blocks	
GAME HIGH.....	11, vs Indiana Tech (11/23/10)
	11, vs Kalamazoo (12/2/05)
SEASON HIGH.....	119 (2009-10)
GAME LOW.....	0, Several times
SEASON LOW.....	18 (1986-87)
Steals	
GAME HIGH.....	25, vs Kalamazoo (12/2/05)
SEASON HIGH.....	315 (1990-91)
GAME LOW.....	0, St. Bonaventure (12/2/08)
	0, UMBC (12/20/05)
SEASON LOW.....	188 (2008-09)
Turnovers	
GAME HIGH.....	40, Hampton (12/4/87)
SEASON HIGH.....	655 (1989-99)
GAME LOW.....	.5, North Dakota State (1/5/09)
SEASON LOW.....	184 (1980-81)



## FORT WAYNE INDIVIDUAL QUARTER HIGHS

Points	13	De'Jour Young, 2nd, at UIC (12/10/16)
FG Made	5	De'Jour Young, 2nd, at UIC (12/10/16)
FG Att.	7 (6x)	MR - De'Jour Young, 4th, vs IUPUI (1/28/17)
3-Pt FG Made	2 (7x)	MR - Rachel Rinehart, 2nd, at Denver (2/4/17)
3-P FG Att.	4	Anna Lappenüper, 3rd, at South Dakota State (1/5/17)
FT Made	6	De'Jour Young, 4th, vs Oakland (11/19/16)
FT Att.	8	De'Jour Young, 4th, vs Oakland (11/19/16)
Rebounds	6 (2x)	MR - De'Jour Young, 1st, at Denver (2/4/17)
Offensive Rebounds	5	De'Jour Young, 1st, at Denver (2/4/17)
Defensive Rebounds	5	De'Jour Young, 2nd, at UIC (12/10/16)
Fouls	3 (13x)	MR - Nia Thomas, 4th, at Denver (2/4/17)
Assists	3 (8x)	MR - Zaria Atkins, 3rd, vs Omaha (1/25/17)
Blocked Shots	2 (3x)	MR - Selena Lozada, 2nd, vs Western Illinois (12/28/16)
Steals	4	Rachel Rinehart, 4th, at South Dakota State (1/5/17)

## FORT WAYNE TEAM QUARTER HIGHS

Points	25 (3x)	MR - 3rd, vs North Dakota State (2/11/17)
1st Quarter Points	21	vs Oakland (11/19/16)
2nd Quarter Points	21	at UIC (12/10/16)
3rd Quarter Points	25 (2x)	MR - vs North Dakota State (2/11/17)
4th Quarter Points	25	vs Denver (1/12/17)
Fewest Points	5 (2x)	MR - 1st, at Illinois (12/2/16)
FG Made	10 (3x)	MR - 4th, vs Oral Roberts (1/21/17)
FG Att.	21	4th, at South Dakota State (1/5/17)
Highest FG Pct.	.667 (6-9)	3rd, at Wright State (12/20/16)
Lowest FG Pct.	.071 (1-14)	3rd, vs Denver (1/12/17)
3-Pt FG Made	3 (5x)	MR - 2nd, vs Denver (1/12/17)
3-Pt FG Att.	8 (2x)	MR - 3rd, at South Dakota State (1/5/17)
3-Pt FG Pct. (2 made)	1.000 (2-2) (2x)	MR - vs North Dakota State (2/11/17)
FT Made	13	4th, vs. Eastern Kentucky (12/21/16)
FT Att.	15	4th, vs. Eastern Kentucky (12/21/16)
FT Pct (5 made)	1.000 (9-9)	4th, vs Trine (11/14/16)
Rebounds	15	3rd, vs Denver (1/12/17)
Offensive Rebounds	9	3rd, vs Denver (1/12/17)
Defensive Rebounds	10	2nd, at UIC (12/10/16)
Fouls	11	3rd, vs Coastal Carolina (11/26/16)
Assists	6 (2x)	2nd, at UIC (12/10/16)
Turnovers	10	2nd, vs Oakland, (11/19/16)
Blocked Shots	3	2nd, vs Trine (11/14/16)
Steals	6 (2x)	MR - 1st, vs Omaha (1/25/17)

## OPPONENT INDIVIDUAL QUARTER HIGHS

Points	16	Larissa Lurken, 1st, at Kent State (11/30/16)
FG Made	6 (2x)	MR - Larissa Lurken, 1st, at Kent State (11/30/16)
FG Att.	8 (4x)	MR - Mikaela Shaw, 4th, vs Omaha (1/25/17)
3-Pt FG Made	3	Lauren Loven, 4th, vs Denver (1/12/17)
3-P FG Att.	4 (4x)	MR - Lauren Loven, 3rd, vs Denver (1/12/17)
FT Made	8	Briana Johnson, 3rd, at Denver (2/4/17)
FT Att.	10	Briana Johnson, 3rd, at Denver (2/4/17)
Rebounds	7	Hannah Little, 4th, vs Oakland (11/19/16)
Offensive Rebounds	3 (7x)	MR - Megan Bonar, 4th, at South Dakota (1/18/17)
Defensive Rebounds	5	Taylor Thunstedt, 1st, at North Dakota State (1/7/2017)
Fouls	3 (7x)	MR - Kennedy Childers, 4th, vs North Dakota State (2/11/17)
Assists	4 (5x)	MR - Kaitlyn Severyn, 4th, vs South Dakota (2/9/17)
Blocked Shots	3	Hannah Little, 1st, vs Oakland (11/19/16)
Steals	3 (3x)	MR - Danielle Lawrence, 3rd, vs IUPUI (1/28/17)

## OPPONENT TEAM QUARTER HIGHS

Points	32	1st, at South Dakota (1/18/17)
1st Quarter Points	31	at South Dakota (1/18/17)
2nd Quarter Points	25	at North Dakota State (1/7/17)
3rd Quarter Points	25 (3x)	MR - at Denver (2/4/17)
4th Quarter Points	30 (2x)	MR - vs Denver (1/12/17)
Fewest Points	5	at Butler (11/16/16)
FG Made	13	1st, at South Dakota (1/18/17)
FG Att.	20	1st, vs Coastal Carolina (11/26/16)
Highest FG Pct.	.909 (10-11)	1st, vs Oral Roberts (1/21/17)
Lowest FG Pct.	.154 (2-13) (2x)	MR - 1st, at Western Michigan (12/6/16)
3-Pt FG Made	4 (4x)	MR - 3rd, at Oral Roberts (12/31/16)
3-Pt FG Att.	10	4th, vs Belmont (11/11/16)
3-Pt FG Pct. (2 made)	1.000 (3-3) (3x)	MR - 1st, vs North Dakota State (2/11/17)
FT Made	11	4th, vs Oral Roberts (1/21/17)
FT Att.	14	4th, vs Oral Roberts (1/21/17)
FT Pct (5 made)	1.000 (8-8)	3rd, at South Dakota State (1/5/17)
Rebounds	18	1st, vs Belmont (11/11/16)
Offensive Rebounds	7 (3x)	MR - 2nd, vs Oral Roberts (1/21/17)
Defensive Rebounds	13	1st, vs Belmont (11/11/16)
Fouls	12	4th, vs. Eastern Kentucky (12/21/16)
Assists	8	vs South Dakota (2/9/17)
Turnovers	10	1st, vs Omaha (1/25/17)
Blocked Shots	5	1st, at South Dakota (1/18/17)
Steals	6 (3x)	MR - 3rd, vs Oakland (11/19/16)

## FORT WAYNE INDIVIDUAL RECORDS

Points	
GAME .....	43, Lindy Jones at St. Joseph's (1/27/96)
.....	43, Amanda Hyde at Southern Illinois (11/29/12)
SEASON .....	752, Lisa Miller (1991-92)
CAREER .....	2358, Lisa Miller (1988-92)

Scoring Average	
SEASON .....	26.0, Lindy Jones (1995-96)
CAREER .....	21.2, Lisa Miller (1988-92)

Field Goals Made	
GAME .....	18, Lindy Jones at St. Joseph's (1/27/96)
SEASON .....	243, Lisa Miller (1991-92)
CAREER .....	808, Lisa Miller (1988-92)

Field Goals Attempted	
GAME .....	30, Lindy Jones at St. Joseph's (1/27/96)
SEASON .....	537, Johnna Lewis-Carlisle (2007-08)
CAREER .....	1658, Johnna Lewis-Carlisle (2004-08)

Field Goal Percentage (min. 10 att.)	
GAME ....	.909 (10-of-11), Stephanie Rosado at Centenary (12/31/10)
SEASON .....	.578 (170-294), Rhonda Unverferth (1984-85)
CAREER .....	.561 (216-385), Amy Neuhouser (1988-90)

3-Point Field Goals Made	
GAME .....	9, Jamie Holderman vs SIUE (2/1/01)
.....	9, Jamie Holderman at Bellarmine (1/13/00)
SEASON .....	96, Anne Boese (2009-10)
CAREER .....	301, Anne Boese (2008-12)

3-Point Field Goals Attempted	
GAME .....	17, Anne Boese at Oral Roberts (12/29/10)
.....	17, Jordan Zuppe vs Toledo (11/29/08)
.....	17, Jamie Holderman at Missouri-St. Louis (2/15/01)
SEASON .....	96, Anne Boese, (2009-10)
CAREER .....	768, Anne Boese, (2008-12)

3-Point Field Goal Percentage (min. 5 att.)	
GAME .....	1.000 (6-of-6), Hilary O'Connell vs UMBC (12/20/05)
SEASON .....	.461 (41-89), Trish Fleming (2000-01)
CAREER .....	.413 (229-555), Haley Seibert (2011-15)

Free Throws Made	
GAME .....	22, Ashley Johnson vs North Dakota State (2/26/06)
SEASON .....	266, Lisa Miller, (1991-92)
CAREER .....	741, Lisa Miller, (1988-92)

Free Throw Attempts	
GAME .....	24, Lisa Miller at Wayne State (11/16/90)
SEASON .....	336, Lisa Miller, (1991-92)
CAREER .....	922, Lisa Miller, (1988-92)

Free Throw Percentage (min. 9 att.)	
GAME .....	1.000 (14-of-14) Haley Seibert vs NKU (12/6/14)
.....	1.000 (14-of-14) Amanda Hyde vs Indiana (11/12/13)
.....	1.000 (14-of-14) Amanda Hyde vs Purdue (12/6/12)
.....	1.000 (14-of-14) Lisa Miller vs St. Joseph's (1/2/92)
.....	1.000 (14-of-14) Lisa Miller vs Tri-State (12/3/88)
SEASON .....	.914 (127-139), Haley Seibert (2014-15)
CAREER .....	.868 (315-363), Haley Seibert (2011-15)

Rebounds.....	
GAME .....	23, Vereea Bibbs vs UALR (11/28/03)
SEASON .....	280, Pam Edwards, (1991-92)
CAREER .....	937, Lisa Miller, (1988-92)

Rebound Average	
SEASON .....	10.9, Ann McCleneghen (1979-80)
CAREER .....	8.4, Lisa Miller (1988-92)

Assists	
GAME .....	15, Wendy Recker vs Southern Indiana (1/28/95)
SEASON .....	197, Wendy Recker, (1994-95)
CAREER .....	419, Wendy Recker, (1993-96)

Assists Average	
SEASON .....	7.3, Wendy Recker (1994-95)
CAREER .....	5.1, Wendy Recker (1993-96)

Blocks	
GAME .....	8, Stephanie Rosado Indiana Tech (11/23/10)
SEASON .....	47, Stephanie Rosado, (2010-11)
CAREER .....	130, Jennie Newhard, (1992-96)

Blocks Average	
SEASON .....	1.6, Jennie Newhard (1993-94)
.....	1.6, Shalauna McMillan (1996-97)
CAREER .....	1.3, Jennie Newhard (1992-96)

Steals	
GAME .....	10, Kayla Drake at South Dakota State (1/22/11)
SEASON .....	80, Sue Hendricks, (1980-81)
CAREER .....	249, Lindy Jones, (1992-96)

Steals Average	
SEASON .....	3.5, Sue Hendricks (1980-81)
CAREER .....	2.8, Laure Renninger (1982-84)

Games Played	
SEASON .....	31, Amanda Hyde (2010-11)
.....	31, Stephanie Rosado (2010-11)
.....	31, Erin Murphy (2010-11)
.....	31, Anne Boese (2010-11)
.....	31, Jordan Zuppe (2010-11)
CAREER .....	121, Jordan Zuppe (2007-11)

Games Started	
SEASON .....	31, Anne Boese (2010-11)
.....	31, Stephanie Rosado (2010-11)
.....	31, Jordan Zuppe (2010-11)
CAREER .....	118, Jordan Zuppe (2007-11)

# THE LAST TIME FORT WAYNE...

## IN THE RANKINGS

Was Ranked ..... No. 18, 3/7/1996  
Played a Ranked (AP) Team ..... at No. 23 West Virginia, 12/13/2014 (L, 82-48)  
Defeated a Ranked (AP) Team ..... at No. 21 Michigan State, 12/1/2013 (W, 81-76)

## CONSECUTIVE GAME STREAKS

Won 5+ Consecutive Games ..... Dec. 31, 2010 - Jan. 24, 2011 (6 straight)  
Won 10+ Consecutive Games ..... Nov. 18, 1995 - Jan. 13, 1996 (14 straight)  
**Lost 5+ Consecutive Games ..... Dec. 28, 2016 - Jan. 21, 2017 (7 straight)**  
Lost 10+ Consecutive Games ..... Dec. 20, 2015 - Jan. 28, 2016 (11 straight)

## SCORING

**Scored 20-24 points ..... Rachel Rinehart (21), vs. Oral Roberts, 1/21/2017**  
Scored 25-29 points ..... Josie Fisher (28), at Western Illinois, 2/4/2016  
Scored 30-39 points ..... Kamilah Carter (30), vs. North Dakota State, 2/27/2016  
Scored ≥ 40 points ..... Amanda Hyde (41), at SIUE, 11/26/2013  
Freshman Scored 25+ points ..... Josie Fisher (28), at Western Illinois, 2/4/2016  
**Came off the bench to score 20 ..... Peyton Fallis (22), at Butler, 11/16/2016**  
Consecutive 25 point games ..... Amanda Hyde, (28), vs. Denver, 3/9/2014; (25), at UIC, 3/19/2014  
Two players scored 20 points ..... at Western Illinois, 2/4/2016  
..... Josie Fisher (28) and Kamilah Carter (22)  
Three players scored 20 points ..... vs. Omaha, 3/1/2014  
..... Haley Seibert (23), Ariana Simmons (22), Amanda Hyde (20)

**None in double figures ..... at Western Michigan, 12/6/2016**  
**One in double figures ..... Anna Lappenküper (15), vs. South Dakota, 2/9/2017**  
**Two in double figures ..... at Denver, 2/4/2017**  
..... **De'Jour Young (14) and Rachel Rinehart (10)**  
**Three in double figures ..... at Omaha, 2/15/2017**

..... **De'Jour Young (13), Selena Lozada (10) and Rachel Rinehart (10)**  
**Four in double figures ..... vs. North Dakota State, 2/11/2017**  
..... **De'Jour Young (16), Zaria Atkins (16), Rachel Rinehart (15), and Peyton Fallis (11)**  
Five in double figures ..... at Michigan State, 12/1/2013; Amanda Hyde (23),  
..... Haley Seibert (14), Rachel Mauk (14), Ariana Simmons (12), and Mur Hagerman (10)  
Six in double figures ..... vs. Trine, 12/30/2014; Keanna Gary (23), Kamilah Carter (20),  
..... Haley Seibert (12), Allyson Bunch (11), Courtney Ogle (10), and Brett Green (10)

**Scored ≥ 25 points/quarter ..... 25, 3rd quarter, vs. North Dakota State, 2/11/2017**  
Scored ≥ 50 points/half ..... 50, 1st half, vs. Grace, 11/16/2015  
Scored ≥ 100 points ..... 101, vs. Indiana Tech, 12/11/2013  
Scored ≥ 100 points/road game ..... 112, at Indiana-South Bend, 1/9/2002  
Scored ≥ 100 points/neutral site ..... 106, vs. Western Illinois, 3/10/2013 (@ Souix Falls, S.D.)  
**Scored < 10 points/quarter ..... 8, 3rd quarter, at Denver, 2/4/2017**  
**Scored ≤ 15 points/quarter ..... 12, 4th quarter, at Omaha, 2/15/2017**  
**Scored ≤ 20 points/half ..... 20, 2nd half, at South Dakota State, 1/5/2017**  
**Scored ≤ 30 points/half ..... 28, 1st half, vs. North Dakota State, 2/11/2017**  
**Scored < 50 points/game ..... 48, vs. IUPUI, 1/28/2017**

## FIELD GOAL SHOOTING

**Shot ≥ 60%/quarter ..... .600 (6-of-10), 1st quarter, vs. IUPUI, 1/28/2017**  
Shot ≥ 70%/quarter ..... —  
Shot ≥ 60%/half ..... .600 (12-of-20), 2nd half, at South Dakota State, 2/8/2015  
Shot ≥ 70%/half ..... .741 (20-of-27), 2nd half, vs. Indiana Tech, 12/11/2013  
Shot ≥ 60%/game ..... .625 (30-of-48), vs. Western Illinois, 2/21/2009  
Shot ≥ 70%/game ..... .720 (36-of-50), vs. IUPUI, 1/23/1992  
**Shot ≤ 20%/quarter ..... .200 (2-of-10), 2nd quarter, vs. North Dakota State, 2/11/2017**  
**Shot ≤ 20%/half ..... .185 (5-27), 1st half, at Western Michigan, 12/6/2016**  
**Shot ≤ 30%/quarter ..... .231 (3-of-13), 3rd quarter, at Denver, 2/4/2017**  
**Shot ≤ 30%/half ..... .292 (7-of-24), 2nd half, at Denver, 2/4/2017**  
**Shot ≤ 30%/game ..... .283 (17-of-60), at Denver, 2/4/2017**  
Shot ≤ 40%/game and won ..... .377 (23-of-61), vs. Denver, 1/30/2016  
Shot ≤ 30%/game and won ..... .288 (15-of-52), vs. Oral Roberts, 2/17/2016

## THREE-POINTERS

Made 6 ..... Kamilah Carter (6), vs. South Dakota, 2/25/2016  
Made 7 ..... Haley Seibert (7), at Omaha, 1/30/2014  
Made 8 ..... Anne Boese (8), vs. Butler, 11/20/2011  
Player Made 9 ..... Jamie Holderman (9), vs. SIU-Edwardsville, 2/1/2001  
**Attempted ≥ 10 ..... Anna Lappenküper (10), at South Dakota State, 1/5/2017**  
Attempted ≥ 15 ..... Anne Boese (17), at Oral Roberts, 12/29/2010  
Fort Wayne Made ≥ 15 ..... 16, at Chicago State, 12/4/2014  
**Fort Wayne Did not make a three-pointer ..... at Western Michigan, 12/6/2016**  
Fort Wayne Attempted ≥ 30 ..... 30, at South Dakota State, 2/13/2016  
Fort Wayne Attempted ≥ 44 ..... 48, vs. Bowling Green, 11/19/2004  
**Fort Wayne Shot 60% (min. 10 att.) ..... .600 (6-of-10), vs. Defiance, 11/12/2016**

## FREE THROWS

Made 10-of-10 or better ..... 10-10, Josie Fisher, vs. North Dakota State, 2/27/2016  
**Fort Wayne Shot 90% (min. 10 atts) ..... .944 (17-of-18), at South Dakota, 1/18/2017**  
**Fort Wayne Shot ≤ 50% ..... .500 (4-of-8), vs. IUPUI, 1/28/2017**  
Fort Wayne Made ≥ 40 ..... 40 (attempted 48) vs. Southern Indiana, 2/6/1992  
**Fort Wayne Made ≤ 5 FTs ..... 4 (attempted 8), vs. IUPUI, 1/28/2017**  
Fort Wayne Attempted ≥ 50 FTs ..... 52 (made 42), vs. Northern Kentucky, 12/21/1995  
**Fort Wayne Attempted ≤ 5 FTs ..... 5 (made 4), vs. Western Illinois, 12/28/2016**

## REBOUNDS

**Had ≥ 10 rebounds ..... De'Jour Young (11), at Denver, 2/4/2017**  
Two Players Had ≥ 10 rebounds ..... vs. USC Upstate, 11/21/2015  
..... Courtney Ogle (10) and De'Jour Young (10)  
Three Players Had ≥ 10 rebounds ..... at Saint Joseph's (IN), 2/9/1999  
..... Angie Womack (12), Katie Bruening (12), and Laura Douglas (10)  
Had ≥ 15 rebounds ..... Keanna Gary (16), at Denver, 1/9/2016  
Had ≥ 20 rebounds ..... Verea Bibbs (23), vs. UALR, 11/28/2003  
Had 10 rebounds in consecutive games ..... Keanna Gary  
..... (16), at Denver, 1/9/2016 and (11) vs. South Dakota State, 1/13/2016  
Had 10 rebounds in three consecutive games ..... Keanna Gary  
..... (16) vs. Western Illinois, 1/7/2016; (16), at Denver, 1/9/2016; and (11) vs. South Dakota State, 1/13/2016  
Had 10 rebounds in four consecutive games ..... Keanna Gary  
..... (10), vs. IUPUI, 1/1/2016; (16), vs. Western Illinois, 1/7/2016;  
..... (16), at Denver, 1/9/2016; and (11) vs. South Dakota State, 1/13/2016  
Had 10 rebounds in five consecutive games ..... Lisa Miller  
..... (13) at Kentucky Wesleyan, 2/18/1989; (10) vs. Northern Kentucky, 2/23/1989;  
..... (13) vs. Ashland, 2/25/1989; (16) vs. Wayne State, 2/28/1989; and (12) vs. Taylor, 11/17/1989  
Fort Wayne had ≥ 60 rebounds ..... vs. Shippensburg (65), 11/19/1995

## DOUBLE-DOUBLES

**Last Player ..... De'Jour Young (14 pts/11 rbs), at Denver, 2/4/2017**  
**Points & Rebounds ..... De'Jour Young (14 pts/11 rbs), at Denver, 2/4/2017**  
Points & Assists ..... Maggie Bruening (12 pts/10 ast), vs. Morehead State, 1/5/2004  
Points & Steals ..... Kayla Drake (27 pts/10 stl), at South Dakota State, 1/22/2011  
Rebounds & Assists ..... Lindsay Wernitz (10 rbs/10 ast), at Quincy, 2/17/2001  
Double-double in consecutive games ..... Keanna Gary  
..... (10 pts/10 rbs), vs. IUPUI, 1/1/2016; (10 pts/16 rbs), vs. Western Illinois, 1/7/2016  
Double-double in three consecutive games ..... Stephanie Rosado  
..... (14 pts/10 rbs), vs. Akron, 11/15/2010; (22 pts/12 rbs), at Youngstown State, 11/20/2010;  
..... (31 pts/13 rbs), vs. Indiana Tech, 11/23/2010  
Double-double in four consecutive games ..... Sarah Turner  
..... (16 pts/11 rbs), vs. Ashland, 1/4/1988; (22 pts/13 rbs), vs. Lewis, 1/9/1988;  
..... (15 pts/10 rbs), vs. Huntington 1/16/1988; (17 pts/10 rbs), vs. Kentucky Wesleyan, 1/21/1988  
Two players had double-doubles ..... at North Dakota State, 1/9/2014  
..... Amanda Hyde (35 pts/10 rbs) and Stefanie Mauk (12 pts/10 rbs)  
Three players had double-doubles ..... vs. Taylor, 11/17/1989 (@ Huntington, Ind.)  
..... Lisa Miller (20 pts/12 rbs), Robin Scott (14 pts/10 rbs), and Pam Edwards (11 pts/11 rbs)  
30 points and 10 rebounds ..... Amanda Hyde (35 pts/10 rbs), at North Dakota State, 1/9/2014  
20 points and 15 rebounds ..... Stefanie Mauk (20 pts/15 rbs), vs. Rochester, 12/22/2012  
30 points and 15 rebounds ..... Pam Edwards (31 pts/18 rbs), vs. Ashland, 1/25/1992

## ASSISTS

Had ≥ 8 assists ..... Rachel Rinehart (8), vs. Western Illinois, 1/2/2015  
Had ≥ 9 assists ..... Amanda Hyde (9), at Detroit, 12/21/2013  
Had ≥ 10 assists ..... Jordan Zuppe (11), vs. Oral Roberts, 1/29/2011  
Had ≥ 15 assists ..... Wendy Recker (15), vs. Southern Indiana, 1/28/1995  
Had 10 assists in consecutive games ..... Maggie Bruening  
..... (10), vs. Morehead State, 1/5/2004; (10), vs. Air Force, 1/7/2004  
Fort Wayne had 20-24 assists ..... 20, vs. Kent State, 11/19/2015  
Fort Wayne had 25-29 assists ..... 28, vs. Kalamazoo, 12/2/2005  
Fort Wayne had ≥ 30 assists ..... 31, vs. Southern Indiana, 2/7/1991  
**Fort Wayne had < 10 assists ..... 7, at Omaha, 2/15/2017**  
**Fort Wayne had ≤ 5 assists ..... 4, at Oral Roberts, 12/31/2016**

## BLOCKED SHOTS

Blocked 5-6 shots ..... Ariana Simmons (5), vs. Ball State, 12/29/2013  
Blocked ≥ 7 shots ..... Stephanie Rosado (8), vs. Indiana Tech, 11/23/2010  
Fort Wayne blocked ≥ 10 shots ..... 11, vs. Indiana Tech, 11/23/2010

## STEALS

**Had 5 steals ..... Rachel Rinehart vs. Western Illinois, 12/28/2016**  
**Had 6 steals ..... Rachel Rinehart vs. Oral Roberts, 1/21/2017**  
Had 7 steals ..... Haley Seibert at North Dakota State, 1/17/2015  
Had ≥ 8 steals ..... Kayla Drake (10), at South Dakota State, 1/22/2011  
Two Players Had ≥ 5 steals ..... at Milwaukee, 12/28/2015  
..... Rachel Rinehart (6) and Josie Fisher (5)  
Had 5 steals in consecutive games ..... Kayla Drake  
..... (10), at South Dakota State, 1/22/2011; (6), at North Dakota State, 1/24/2011  
Fort Wayne had ≥ 20 steals ..... 21, at Milwaukee, 12/28/2015

## TURNOVERS

**Committed ≥ 20 turnovers ..... 22, vs. Western Illinois, 12/28/2016**  
**Committed ≥ 25 turnovers ..... 25, vs. Oakland, 11/19/2016**  
Committed ≤ 5 turnovers ..... 5, at Western Illinois, 2/4/2016  
**Committed < 10 turnovers ..... 9, at Denver, 2/4/2017**

## OVERTIME

Played an OT game ..... at Denver (L, 53-50), 1/9/2016  
Played multiple overtimes ..... at North Dakota State (W, 98-89, 2ot), 1/9/2014  
Won an OT game ..... at North Dakota State (W, 98-89, 2ot), 1/9/2014  
Won in multiple overtimes ..... at North Dakota State (W, 98-89, 2ot), 1/9/2014  
Won an OT game at home ..... vs. UMKC (W, 82-76), 12/3/2011  
Won an OT game at neutral site ..... vs. Western Illinois (W, 106-101, 2ot), 3/10/2013  
Won an OT game on the road ..... at North Dakota State (W, 98-89, 2ot), 1/9/2014  
Lost an OT game ..... at Denver (L, 53-50), 1/9/2016  
Lost in multiple overtimes ..... at Hampton (L, 78-77, 2ot), 12/19/2010  
Lost an OT game at home ..... vs. Detroit (L, 81-74), 12/2/2014  
Lost an OT game on the road ..... at Denver (L, 53-50), 1/9/2016



1

YULESKA RAMIREZ-TEJEDA

Freshman | 5-7  
Cambridge, Mass.  
Cambridge Rindge and Latin

GUARD

SEASON HIGH	CATEGORY	CAREER HIGH
24, at South Dakota, 1/18/2017	Minutes	24, at South Dakota, 1/18/2017
10, at North Dakota State, 1/7/2017	Points	10, at North Dakota State, 1/7/2017
7, vs. Denver, 1/12/2017	Rebounds	7, vs. Denver, 1/12/2017
1, three times	Assists	1, three times
3, at North Dakota State, 1/7/2017	Steals	3, at North Dakota State, 1/7/2017
1, at North Dakota State, 1/7/2017	Blocks	1, at North Dakota State, 1/7/2017
5, at North Dakota State, 1/7/2017	FG Made	5, at North Dakota State, 1/7/2017
10, at North Dakota State, 1/7/2017	FG Attempts	10, at North Dakota State, 1/7/2017
	3-PT Made	
	3-PT Attempts	
4, at South Dakota, 1/18/2017	FT Made	4, at South Dakota, 1/18/2017
4, at South Dakota, 1/18/2017	FT Attempts	4, at South Dakota, 1/18/2017

## CAREER VS. SOUTH DAKOTA STATE

Season	gp-gs	min/avg	Total		3-Point		F-Throws		Rebounds											Scoring	
			fg-fga	pct	fg-fga	pct	ft-fga	pct	off	def	tot	avg	pf	fo	ast	to	blk	stl	pts	avg	
2016-17	1-0	18/18.0	2-7	.286	0-0	.000	0-0	.000	2	2	4	4.0	0	0	0	2	0	0	4	4.0	
TOTAL	1-0	18/18.0	2-7	.286	0-0	.000	0-0	.000	2	2	4	4.0	0	0	0	2	0	0	4	4.0	

SINGLE-GAME HIGHS [all-time ranking]:  
Points: 4, at South Dakota State -- 01/05/17  
Rebounds: 4, at South Dakota State -- 01/05/17  
FG made: 2, at South Dakota State -- 01/05/17  
FG attempts: 7, at South Dakota State -- 01/05/17

## SEASON STATS

Opponent	Date	qs	min	Total		3-Pointers		Free throws		Rebounds											pts	avg
				fg-fga	pct	3fg-fga	pct	ft-fga	pct	off	def	tot	avg	pf	a	t/o	blk	stl				
BELMONT	11/11/16		17	0-4	.000	0-0	.000	2-2	1.000	1	3	4	4.0	3	1	1	0	0	2	2.0		
DEFIANCE	11/12/16		11	3-5	.600	0-0	.000	1-1	1.000	1	0	1	2.5	1	0	0	0	0	7	4.5		
TRINE	11/14/16		6	0-0	.000	0-0	.000	2-2	1.000	0	2	2	2.3	3	0	0	0	0	2	3.7		
at Butler	11/16/16		10	3-4	.750	0-0	.000	0-0	.000	0	1	1	2.0	2	0	1	0	1	6	4.3		
OAKLAND	11/19/16		11	0-4	.000	0-0	.000	0-0	.000	0	1	1	1.8	0	0	0	0	0	0	3.4		
COASTAL CAROLINA	11/26/16		5	0-2	.000	0-0	.000	0-0	.000	0	0	0	1.5	0	0	1	0	1	0	2.8		
at Kent State	11/30/16		9	0-0	.000	0-0	.000	0-0	.000	1	3	4	1.9	1	0	1	0	0	0	2.4		
at Illinois	12/02/16		4	0-0	.000	0-0	.000	0-0	.000	0	2	2	1.9	0	0	1	0	0	0	2.1		
at Western Michigan	12/06/16		1	0-0	.000	0-0	.000	0-0	.000	0	0	0	1.7	0	0	1	0	0	0	1.9		
at UIC	12/10/16	dnp		-	-	-	-	-	-	-	-	-	-	-	-	-	-	-	-	-		
vs Miami (Ohio)	12/19/16		11	0-3	.000	0-0	.000	0-0	.000	2	0	2	1.7	1	0	0	0	0	0	1.7		
at Wright State	12/20/16	dnp		-	-	-	-	-	-	-	-	-	-	-	-	-	-	-	-	-		
vs Eastern Kentucky	12/21/16		2	0-0	.000	0-0	.000	0-0	.000	0	0	0	1.5	0	0	0	0	0	0	1.5		
WESTERN ILLINOIS	12/28/16		4	0-0	.000	0-0	.000	0-0	.000	0	0	0	1.4	1	0	0	0	0	0	1.4		
at Oral Roberts	12/31/16		21	1-2	.500	0-0	.000	0-0	.000	1	3	4	1.6	0	0	1	0	0	2	1.5		
at South Dakota State	01/05/17		18	2-7	.286	0-0	.000	0-0	.000	2	2	4	1.8	0	0	2	0	0	4	1.6		
at North Dakota State	01/07/17		22	5-10	.500	0-0	.000	0-0	.000	1	3	4	1.9	2	1	1	1	3	10	2.2		
DENVER	01/12/17		16	1-4	.250	0-0	.000	0-0	.000	4	3	7	2.3	0	0	2	0	0	2	2.2		
at South Dakota	01/18/17		24	2-4	.500	0-0	.000	4-4	1.000	0	3	3	2.3	0	1	1	0	0	8	2.5		
ORAL ROBERTS	01/21/17		4	1-2	.500	0-0	.000	0-0	.000	1	0	1	2.2	0	0	0	0	0	2	2.5		
OMAHA	01/25/17	dnp		-	-	-	-	-	-	-	-	-	-	-	-	-	-	-	-	-		
IUPUI	01/28/17		2	0-0	.000	0-0	.000	0-0	.000	0	0	0	2.1	0	0	0	0	0	0	2.4		
at Denver	02/04/17		2	0-0	.000	0-0	.000	0-0	.000	0	0	0	2.0	1	0	0	0	0	0	2.3		
SOUTH DAKOTA	02/09/17	dnp		-	-	-	-	-	-	-	-	-	-	-	-	-	-	-	-	-		
NORTH DAKOTA STATE	02/11/17	dnp		-	-	-	-	-	-	-	-	-	-	-	-	-	-	-	-	-		
at Omaha	02/15/17		10	1-2	.500	0-0	.000	0-0	.000	0	0	0	1.9	1	0	0	0	1	2	2.2		
Totals		0	210	19-53	.358	0-0	.000	9-9	1.000	14	26	40	1.9	16	3	13	1	6	47	2.2		

Games played: 21  
Minutes/game: 10.0  
Points/game: 2.2  
FG Pct: 35.8  
FT Pct: 100.0

Rebounds/game: 1.9  
Assists/game: 0.1  
Turnovers/game: 0.6  
Assist/turnover ratio: 0.2  
Steals/game: 0.3  
Blocks/game: 0.0

## CAREER STATS

			Total		3-Point		F-Throws		Rebounds											Scoring	
Season	gp-gs	min/avg	fg-fga	pct	fg-fga	pct	ft-fga	pct	off	def	tot	avg	pf	fo	ast	to	blk	stl	pts	avg	
2016-17	21-0	210/10.0	19-53	.358	0-0	.000	9-9	1.000	14	26	40	1.9	16	0	3	13	1	6	47	2.2	
TOTAL	21-0	210/10.0	19-53	.358	0-0	.000	9-9	1.000	14	26	40	1.9	16	0	3	13	1	6	47	2.2	





KeSHYRA  
**McCARVER**

Junior | 5-10  
Toledo, Ohio  
Whitmer

**FORWARD**

SEASON HIGH	CATEGORY	CAREER HIGH
39, vs Eastern Kentucky, 12/21/2016	Minutes	39, vs Eastern Kentucky, 12/21/2016
12, two times	Points	22, at Illinois, 11/14/2014
8, vs Defiance, 11/12/2016	Rebounds	14, at Illinois, 11/14/2014
2, at UIC, 12/10/2016	Assists	4, at Western Illinois, 1/31/2015
3, vs Defiance, 11/12/2016	Steals	3, four times
1, three times	Blocks	2, at Omaha, 2/11/2016
5, two times	FG Made	7, vs. USC Upstate, 11/21/2015
11, vs Belmont, 11/11/2016	FG Attempts	11, two times
2, two times	3-PT Made	4, vs. Grace, 11/18/2014
4, at UIC, 12/10/2016	3-PT Attempts	7, at Detroit, 12/9/2015
6, vs Eastern Kentucky, 12/21/2016	FT Made	11, at Illinois, 11/14/2014
6, vs Eastern Kentucky, 12/21/2016	FT Attempts	12, at Illinois, 11/14/2014

• Summit League Player of the Week (11/17/2014)

## CAREER VS. SOUTH DAKOTA STATE

Season	gp-gs	min/avg	Total fg-fga	pct	3-Point fg-fga	pct	F-Throws ft-fga	pct	Rebounds off	def	tot	avg	pf	fo	ast	to	blk	stl	pts	avg
2014-15	2-0	24/12.0	1-4	.250	1-2	.500	0-0	.000	0	1	1	0.5	9	1	1	2	0	1	3	1.5
2015-16	3-1	42/14.0	1-9	.111	0-4	.000	0-0	.000	1	0	1	0.3	5	0	3	4	0	3	2	0.7
2016-17	1-1	24/24.0	3-9	.333	0-1	.000	3-5	.600	4	2	6	6.0	5	1	1	0	0	1	9	9.0
TOTAL	6-2	90/15.0	5-22	.227	1-7	.143	3-5	.600	5	3	8	1.3	19	2	5	6	0	5	14	2.3

SINGLE-GAME HIGHS [all-time ranking]:

Points: 9, at South Dakota State -- 01/05/17

Rebounds: 6, at South Dakota State -- 01/05/17

Assists: 2, at South Dakota State -- 2/13/16

Steals: 3, South Dakota State -- 01/13/16

FG made: 3, at South Dakota State -- 01/05/17

FG attempts: 9, at South Dakota State -- 01/05/17

3FG made: 1, at South Dakota State -- 02/08/15

3FG attempts: 2, South Dakota State -- 01/13/16; at South Dakota State -- 02/08/15

FT made: 3, at South Dakota State -- 01/05/17

FT attempts: 5, at South Dakota State -- 01/05/17

## SEASON STATS

			Total				3-Pointers		Free throws		Rebounds														
Opponent	Date	gs	min	fg-fga	pct	3fg-fga	pct	ft-fa	pct	off	def	tot	avg	pf	a	t/o	blk	stl	pts	avg					
BELMONT	11/11/16		23	5-11	.455	2-2	1.000	0-0	.000	0	4	4	4.0	4	1	0	0	0	12	12.0					
DEFIANCE	11/12/16	*	26	3-7	.429	2-3	.667	0-0	.000	2	6	8	6.0	2	1	1	1	3	8	10.0					
TRINE	11/14/16	*	19	1-6	.167	1-3	.333	0-0	.000	2	2	4	5.3	5	0	0	0	0	3	7.7					
at Butler	11/16/16	*	22	0-5	.000	0-1	.000	2-2	1.000	1	2	3	4.8	4	1	0	0	0	2	6.3					
OAKLAND	11/19/16	*	17	1-4	.250	0-0	.000	0-0	.000	0	2	2	4.2	3	1	1	0	2	2	5.4					
COASTAL CAROLINA	11/26/16	*	19	5-9	.556	1-2	.500	1-2	.500	0	1	1	3.7	2	1	2	0	1	12	6.5					
at Kent State	11/30/16	*	23	1-7	.143	0-2	.000	0-0	.000	0	1	1	3.3	3	0	2	0	2	2	5.9					
at Illinois	12/02/16	*	30	2-5	.400	1-2	.500	1-1	1.000	4	2	6	3.6	3	1	1	0	1	6	5.9					
at Western Michigan	12/06/16	*	18	1-3	.333	0-1	.000	0-0	.000	1	2	3	3.6	4	0	1	1	0	2	5.4					
at UIC	12/10/16	*	26	3-6	.500	1-4	.250	0-1	.000	2	5	7	3.9	2	2	2	0	0	7	5.6					
vs Miami (Ohio)	12/19/16	*	32	4-9	.444	0-3	.000	3-4	.750	3	1	4	3.9	3	0	1	0	2	11	6.1					
at Wright State	12/20/16	*	34	2-5	.400	0-0	.000	3-4	.750	0	5	5	4.0	4	0	3	0	0	7	6.2					
vs Eastern Kentucky	12/21/16	*	39	2-9	.222	0-2	.000	6-6	1.000	2	2	4	4.0	2	1	3	0	1	10	6.5					
WESTERN ILLINOIS	12/28/16	*	19	3-6	.500	1-2	.500	1-2	.500	2	4	6	4.1	3	1	2	0	1	8	6.6					
at Oral Roberts	12/31/16	*	29	1-7	.143	0-1	.000	4-4	1.000	2	3	5	4.2	1	1	1	0	0	6	6.5					
at South Dakota State	01/05/17	*	24	3-9	.333	0-1	.000	3-5	.600	4	2	6	4.3	5	1	0	0	1	9	6.7					
at North Dakota State	01/07/17	*	4	0-1	.000	0-0	.000	0-0	.000	0	1	1	4.1	0	0	1	1	0	0	6.3					
DENVER	01/12/17		dnp	-	-	-	-	-	-	-	-	-	-	-	-	-	-	-	-	-					
at South Dakota	01/18/17		dnp	-	-	-	-	-	-	-	-	-	-	-	-	-	-	-	-	-					
ORAL ROBERTS	01/21/17		dnp	-	-	-	-	-	-	-	-	-	-	-	-	-	-	-	-	-					
OMAHA	01/25/17		2	0-0	.000	0-0	.000	0-0	.000	0	0	0	3.9	1	1	1	0	0	0	5.9					
IUPUI	01/28/17		19	1-6	.167	0-2	.000	2-4	.500	1	0	1	3.7	1	0	1	0	1	4	5.8					
at Denver	02/04/17		15	0-1	.000	0-0	.000	4-4	1.000	1	0	1	3.6	4	1	1	0	0	4	5.8					
SOUTH DAKOTA	02/09/17		22	4-7	.571	0-2	.000	1-2	.500	2	0	2	3.5	3	1	0	0	0	9	5.9					
NORTH DAKOTA STATE	02/11/17		20	0-2	.000	0-0	.000	3-4	.750	1	3	4	3.5	2	0	0	0	2	3	5.8					
at Omaha	02/15/17		19	0-3	.000	0-0	.000	1-2	.500	0	2	2	3.5	2	0	1	0	0	1	5.6					
Totals		16	501	42-128	.328	9-33	.273	35-47	.745	30	50	80	3.5	63	15	25	3	17	128	5.6					

Games played: 23

Minutes/game: 21.8

Points/game: 5.6

FG Pct: 32.8

3FG Pct: 27.3

FT Pct: 74.5

Rebounds/game: 3.5

Assists/game: 0.7

Turnovers/game: 1.1

Assist/turnover ratio: 0.6

Steals/game: 0.7

Blocks/game: 0.1

## CAREER STATS

Season	gp-gs	min/avg	Total fg-fga	pct	3-Point fg-fga	pct	F-Throws ft-fga	pct	Rebounds off	def	tot	avg	pf	fo	ast	to	blk	stl	pts	avg
2014-15	30-4	503/16.8	41-129	.318	19-62	.306	45-65	.692	27	75	102	3.4	97	4	29	52	4	12	146	4.9
2015-16	29-19	568/19.6	47-142	.331	21-66	.318	34-46	.739	21	63	84	2.9	84	4	22	36	3	21	149	5.1
2016-17	23-16	501/21.8	42-128	.328	9-33	.273	35-47	.745	30	50	80	3.5	63	2	15	25	3	17	128	5.6
TOTAL	82-39	1572/19.2	130-399	.326	49-161	.304	114-158	.722	78	188	266	3.2	244	10	66	113	10	50	423	5.2



SEASON HIGH	CATEGORY	CAREER HIGH
40, at North Dakota State, 1/7/2016	Minutes	40, at North Dakota State, 1/7/2016
15, vs South Dakota, 2/9/2017	Points	15, vs South Dakota, 2/9/2017
5, three times	Rebounds	5, three times
5, two times	Assists	5, two times
3, at North Dakota State, 1/7/2016	Steals	3, at North Dakota State, 1/7/2016
1, two times	Blocks	1, two times
6, vs South Dakota, 2/9/2017	FG Made	6, vs South Dakota, 2/9/2017
15, at South Dakota State, 1/5/2017	FG Attempts	15, at South Dakota State, 1/5/2017
3, vs Western Illinois, 12/28/2016	3-PT Made	3, vs Western Illinois, 12/28/2016
10, at South Dakota State, 1/5/2017	3-PT Attempts	10, at South Dakota State, 1/5/2017
7, at Oral Roberts, 12/31/2016	FT Made	7, at Oral Roberts, 12/31/2016
8, at Oral Roberts, 12/31/2016	FT Attempts	8, at Oral Roberts, 12/31/2016

- *Competed for Germany's U16 and U18 National teams*

## CAREER VS. SOUTH DAKOTA STATE

			Total		3-Point		F-Throws		Rebounds											Scoring	
Season	gp-gs	min/avg	fg-fga	pct	fg-fga	pct	ft-fa	pct	off	def	tot	avg	pf	fo	ast	to	blk	stl	pts	avg	
2016-17	1-1	39/39.0	5-15	.333	2-10	.200	0-0	.000	0	4	4	4.0	3	0	0	1	0	2	12	12.0	
TOTAL	1-1	39/39.0	5-15	.333	2-10	.200	0-0	.000	0	4	4	4.0	3	0	0	1	0	2	12	12.0	

SINGLE-GAME HIGHS [all-time ranking]:  
Points: 12, at South Dakota State -- 01/05/17  
Rebounds: 4, at South Dakota State -- 01/05/17  
Steals: 2, at South Dakota State -- 01/05/17  
FG made: 5, at South Dakota State -- 01/05/17  
FG attempts: 15, at South Dakota State -- 01/05/17  
3FG made: 2, at South Dakota State -- 01/05/17  
3FG attempts: 10, at South Dakota State -- 01/05/17

## SEASON STATS

Opponent	Date	qs	min	Total		3-Pointers		Free throws		Rebounds				pf	a	t/o	blk	stl	pts	avg	
				fg-fga	pct	3fg-fga	pct	ft-fa	pct	off	def	tot	avg								
BELMONT	11/11/16	*	33	1-4	.250	0-1	.000	0-0	.000	0	5	5	5.0	2	5	4	0	1	2	2.0	
DEFIANCE	11/12/16	*	26	2-8	.250	0-2	.000	2-2	1.000	1	3	4	4.5	0	5	2	1	0	6	4.0	
TRINE	11/14/16	*	24	2-5	.400	0-1	.000	2-2	1.000	0	1	1	3.3	5	0	3	0	0	6	4.0	
at Butler	11/16/16	*	31	2-4	.500	1-2	.500	0-0	.000	0	2	2	3.0	3	0	4	0	2	5	4.8	
OAKLAND	11/19/16	*	32	2-6	.333	0-1	.000	0-0	.000	0	1	1	2.6	1	3	6	0	2	4	4.6	
COASTAL CAROLINA	11/26/16	*	29	3-7	.429	0-1	.000	0-0	.000	0	2	2	2.5	2	3	4	0	1	6	4.8	
at Kent State	11/30/16	*	19	0-3	.000	0-1	.000	0-0	.000	0	0	0	2.1	2	1	3	0	1	0	4.1	
at Illinois	12/02/16		25	3-6	.500	1-2	.500	0-0	.000	0	1	1	2.0	0	0	5	0	0	7	4.5	
at Western Michigan	12/06/16		26	0-4	.000	0-2	.000	0-0	.000	0	5	5	2.3	1	0	5	1	0	0	4.0	
at UIC	12/10/16		20	1-3	.333	0-1	.000	2-2	1.000	1	2	3	2.4	2	2	1	0	0	4	4.0	
vs Miami (Ohio)	12/19/16		34	1-7	.143	0-3	.000	3-6	.500	1	2	3	2.5	2	1	2	0	0	5	4.1	
at Wright State	12/20/16	*	29	3-4	.750	0-1	.000	0-0	.000	1	2	3	2.5	3	1	3	0	0	6	4.3	
vs Eastern Kentucky	12/21/16		21	2-4	.500	2-3	.667	0-0	.000	0	2	2	2.5	1	0	4	0	1	6	4.4	
WESTERN ILLINOIS	12/28/16	*	36	5-8	.625	3-4	.750	0-0	.000	0	3	3	2.5	1	0	7	0	1	13	5.0	
at Oral Roberts	12/31/16	*	28	2-3	.667	0-1	.000	7-8	.875	0	3	3	2.5	5	0	1	0	0	11	5.4	
at South Dakota State	01/07/17	*	39	5-15	.333	2-10	.200	0-0	.000	0	4	4	2.6	3	0	1	0	2	12	5.8	
at North Dakota State	01/05/17	*	40	4-11	.364	2-5	.400	2-2	1.000	0	2	2	2.6	3	3	3	0	3	12	6.2	
DENVER	01/12/17	*	28	3-7	.429	1-3	.333	0-0	.000	0	2	2	2.6	4	2	1	0	0	7	6.2	
at South Dakota	01/18/17	*	33	4-14	.286	2-7	.286	0-0	.000	1	0	1	2.5	1	0	3	0	0	10	6.4	
ORAL ROBERTS	01/21/17	*	30	2-10	.200	0-4	.000	0-0	.000	1	3	4	2.6	1	2	2	0	2	4	6.3	
OMAHA	01/25/17	*	36	5-8	.625	1-1	1.000	0-0	.000	0	3	3	2.6	1	3	1	0	1	11	6.5	
IUPUI	01/28/17	*	34	2-5	.400	1-4	.250	0-0	.000	0	0	0	2.5	1	3	0	0	2	5	6.5	
at Denver	02/04/17	*	39	2-10	.200	0-3	.000	2-2	1.000	1	2	3	2.5	3	1	2	0	1	6	6.4	
SOUTH DAKOTA	02/09/17	*	32	6-10	.600	0-0	.000	3-6	.500	0	3	3	2.5	1	2	0	0	1	15	6.8	
NORTH DAKOTA STATE	02/11/17	*	38	2-9	.222	0-2	.000	0-3	.000	1	4	5	2.6	3	2	4	0	0	4	6.7	
at Omaha	02/15/17	*	35	2-6	.333	0-1	.000	0-0	.000	0	1	1	2.5	4	2	1	0	1	4	6.6	
Totals			21	797	66-181	.365	16-66	.242	23-33	.697	8	58	66	2.5	55	41	72	2	22	171	6.6

Games played: 26  
Minutes/game: 30.7  
Points/game: 6.6  
FG Pct: 36.5  
3FG Pct: 24.2  
FT Pct: 69.7

Rebounds/game: 2.5  
Assists/game: 1.6  
Turnovers/game: 2.8  
Assist/turnover ratio: 0.6  
Steals/game: 0.8  
Blocks/game: 0.1

## CAREER STATS

			Total		3-Point		F-Throws		Rebounds						Scoring					
Season	gp-gs	min/avg	fg-fga	pct	fg-fga	pct	ft-fta	pct	off	def	tot	avg	pf	fo	ast	to	blk	stl	pts	avg
2016-17	26-21	797/30.7	66-181	.365	16-66	.242	23-33	.697	8	58	66	2.5	55	2	41	72	2	22	171	6.6
TOTAL	26-21	797/30.7	66-181	.365	16-66	.242	23-33	.697	8	58	66	2.5	55	2	41	72	2	22	171	6.6



SEASON HIGH	CATEGORY	CAREER HIGH
39, two times	Minutes	39, two times
21, vs Oakland, 11/19/2016	Points	21, vs Oakland, 11/19/2016
11, two times	Rebounds	11, two times
5, three times	Assists	5, three times
4, vs Omaha, 1/25/2017	Steals	5, vs. Grace, 11/16/2015
1, five times	Blocks	2, two times
7, five times	FG Made	7, five times
18, vs Western Illinois, 12/28/2016	FG Attempts	18, vs Western Illinois, 12/28/2016
3, vs Oakland, 11/19/2016	3-PT Made	3, vs Oakland, 11/19/2016
5, two times	3-PT Attempts	5, two times
8, vs Oakland, 11/19/2016	FT Made	8, vs Oakland, 11/19/2016
10, vs Oakland, 11/19/2016	FT Attempts	10, vs Oakland, 11/19/2016

## CAREER VS. SOUTH DAKOTA STATE

Season	gp-gs	min/avg	Total fg-fga	pct	3-Point fg-fga	pct	F-Throws ft-fga	pct	Rebounds off	def	tot	avg	pf	fo	ast	to	blk	stl	pts	avg
2015-16	3-3	66/22.0	5-13	.385	1-3	.333	4-6	.667	3	7	10	3.3	7	0	1	3	1	1	15	5.0
2016-17	1-1	30/30.0	3-9	.333	0-1	.000	0-0	.000	0	6	6	6.0	4	0	5	2	0	2	6	6.0
TOTAL	4-4	96/24.0	8-22	.364	1-4	.250	4-6	.667	3	13	16	4.0	11	0	6	5	1	3	21	5.3

SINGLE-GAME HIGHS [all-time ranking]:

Points: 9, South Dakota State -- 01/13/16

Rebounds: 6, at South Dakota State -- 01/05/17; vs South Dakota State -- 03/05/16

Assists: 5, at South Dakota State -- 01/05/17

Steals: 2, at South Dakota State -- 01/05/17

Blocks: 1, vs South Dakota State -- 03/05/16

FG made: 3, at South Dakota State -- 01/05/17

FG attempts: 9, at South Dakota State -- 01/05/17

3FG made: 1, South Dakota State -- 01/13/16

3FG attempts: 2, at South Dakota State -- 2/13/16

FT made: 4, South Dakota State -- 01/13/16

FT attempts: 4, South Dakota State -- 01/13/16

## SEASON STATS

Opponent	Date	qs	min	Total		3-Pointers		Free throws		Rebounds				pf	a	t/o	blk	stl	pts	avg	
				fg-fga	pct	3fg-fga	pct	ft-fga	pct	off	def	tot	avg								
BELMONT	11/11/16	*	25	4-9	.444	0-2	.000	2-2	1.000	3	3	6	6.0	3	1	1	0	0	10	10.0	
DEFIANCE	11/12/16	*	16	6-9	.667	1-1	1.000	0-0	.000	3	1	4	5.0	1	3	2	0	0	13	11.5	
TRINE	11/14/16	*	28	6-13	.462	2-5	.400	2-2	1.000	0	1	1	3.7	4	0	3	0	3	16	13.0	
at Butler	11/16/16	*	13	1-3	.333	0-0	.000	0-0	.000	0	0	0	2.8	1	1	1	0	0	2	10.3	
OAKLAND	11/19/16	*	32	5-9	.556	3-5	.600	8-10	.800	2	3	5	3.2	4	1	4	0	0	21	12.4	
COASTAL CAROLINA	11/26/16	*	32	2-5	.400	0-2	.000	4-4	1.000	1	6	7	3.8	3	0	4	0	1	8	11.7	
at Kent State	11/30/16	*	22	4-6	.667	1-3	.333	3-4	.750	0	1	1	3.4	3	1	2	0	2	12	11.7	
at Illinois	12/02/16	*	34	3-13	.231	0-4	.000	5-6	.833	2	3	5	3.6	1	2	3	0	0	11	11.6	
at Western Michigan	12/06/16	*	33	3-12	.250	0-4	.000	3-3	1.000	2	5	7	4.0	1	1	2	0	0	9	11.3	
at UIC	12/10/16	*	36	7-15	.467	1-4	.250	2-2	1.000	2	7	9	4.5	1	4	3	0	1	17	11.9	
vs Miami (Ohio)	12/19/16	*	22	3-8	.375	0-3	.000	0-0	.000	2	1	3	4.4	2	1	2	0	0	6	11.4	
at Wright State	12/20/16	*	39	4-7	.571	0-2	.000	6-6	1.000	1	3	4	4.3	0	1	5	0	0	14	11.6	
vs Eastern Kentucky	12/21/16	*	38	7-12	.583	0-1	.000	5-6	.833	1	8	9	4.7	3	1	1	0	2	19	12.2	
WESTERN ILLINOIS	12/28/16	*	36	7-18	.389	1-4	.250	0-0	.000	0	5	5	4.7	3	0	2	0	1	15	12.4	
at Oral Roberts	12/31/16	*	31	2-4	.500	0-0	.000	4-4	1.000	1	2	3	4.6	1	2	4	0	2	8	12.1	
at South Dakota State	01/05/17	*	30	3-9	.333	0-1	.000	0-0	.000	0	6	6	4.7	4	5	2	0	2	6	11.7	
at North Dakota State	01/07/17	*	38	6-14	.429	0-2	.000	4-4	1.000	2	3	5	4.7	2	5	1	0	0	16	11.9	
DENVER	01/12/17	*	38	7-17	.412	1-3	.333	5-7	.714	5	6	11	5.1	5	5	1	1	0	20	12.4	
at South Dakota	01/18/17	*	28	6-16	.375	0-2	.000	1-1	1.000	0	2	2	4.9	4	3	3	1	0	13	12.4	
ORAL ROBERTS	01/21/17	*	37	7-16	.438	1-3	.333	1-1	1.000	3	1	4	4.9	4	2	2	0	0	16	12.6	
OMAHA	01/25/17	*	39	5-17	.294	1-3	.333	5-6	.833	4	3	7	5.0	2	3	2	0	4	16	12.8	
IUPUI	01/28/17	*	26	5-10	.500	0-2	.000	0-0	.000	3	3	6	5.0	2	2	4	0	0	10	12.6	
at Denver	02/04/17	*	30	5-17	.294	0-1	.000	4-5	.800	6	5	11	5.3	2	2	0	1	1	14	12.7	
SOUTH DAKOTA	02/09/17	*	35	3-13	.231	0-3	.000	0-1	.000	2	0	2	5.1	3	3	3	1	1	6	12.4	
NORTH DAKOTA STATE	02/11/17	*	34	6-13	.462	0-0	.000	4-5	.800	4	2	6	5.2	3	3	3	1	2	16	12.6	
at Omaha	02/15/17	*	36	6-13	.462	0-0	.000	1-2	.500	3	3	6	5.2	2	1	3	1	1	13	12.6	
Totals			26	808	123-298	.413	12-60	.200	69-81	.852	52	83	135	5.2	64	53	63	6	23	327	12.6

Games played: 26

Minutes/game: 31.1

Points/game: 12.6

FG Pct: 41.3

3FG Pct: 20.0

FT Pct: 85.2

Rebounds/game: 5.2

Assists/game: 2.0

Turnovers/game: 2.4

Assist/turnover ratio: 0.8

Steals/game: 0.9

Blocks/game: 0.2

## CAREER STATS

Season	gp-gs	min/avg	Total fg-fga	pct	3-Point fg-fga	pct	F-Throws ft-fga	pct	Rebounds off	def	tot	avg	pf	fo	ast	to	blk	stl	pts	avg
2015-16	30-21	688/22.9	72-176	.409	8-19	.421	51-72	.708	55	52	107	3.6	69	1	34	34	8	33	203	6.8
2016-17	26-26	808/31.1	123-298	.413	12-60	.200	69-81	.852	52	83	135	5.2	64	1	53	63	6	23	327	12.6
TOTAL	56-47	1496/26.7	195-474	.411	20-79	.253	120-153	.784	107	135	242	4.3	133	2	87	97	14	56	530	9.5





**SELENA LOZADA**

**15**

Senior | 6-2  
 Perth Amboy, N.J.  
 Western Guilford  
 Guilford Technical CC

**FORWARD**

SEASON HIGH	CATEGORY	CAREER HIGH
34, vs. Omaha, 1/25/2017	Minutes	34, vs. Omaha, 1/25/2017
17, vs IUPUI, 1/28/2017	Points	17, vs IUPUI, 1/28/2017
9, vs. Oral Roberts, 1/21/2017	Rebounds	9, vs. Oral Roberts, 1/21/2017
3, vs Eastern Kentucky, 12/21/2016	Assists	3, vs Eastern Kentucky, 12/21/2016
2, vs South Dakota, 2/9/2017	Steals	2, three times
3, vs Western Illinois, 12/28/2016	Blocks	3, vs Western Illinois, 12/28/2016
6, two times	FG Made	6, two times
17, at Oral Roberts, 12/31/2016	FG Attempts	17, at Oral Roberts, 12/31/2016
1, vs IUPUI, 1/28/2017	3-PT Made	1, vs IUPUI, 1/28/2017
1, two times	3-PT Attempts	1, two times
4, at Kent State, 11/30/2016	FT Made	7, vs. Trine, 11/16/2015
8, vs Defiance, 11/12/2016	FT Attempts	10, vs. Trine, 11/16/2015

• Named to the 2015-16 Summit League Winter/Spring Academic Honor Roll

## CAREER VS. SOUTH DAKOTA STATE

			Total		3-Point		F-Throws		Rebounds											Scoring	
Season	gp-gs	min/avg	fg-fga	pct	fg-fga	pct	ft-fga	pct	off	def	tot	avg	pf	fo	ast	to	blk	stl	pts	avg	
2015-16	3-0	16/5.3	0-1	.000	0-0	.000	1-6	.167	0	2	2	0.7	4	0	0	2	1	0	1	0.3	
TOTAL	3-0	16/5.3	0-1	.000	0-0	.000	1-6	.167	0	2	2	0.7	4	0	0	2	1	0	1	0.3	

SINGLE-GAME HIGHS [all-time ranking]:

Points: 1, at South Dakota State -- 2/13/16

Rebounds: 1, South Dakota State -- 01/13/16; at South Dakota State -- 2/13/16

Blocks: 1, vs South Dakota State -- 03/05/16

FG attempts: 1, South Dakota State -- 01/13/16

FT made: 1, at South Dakota State -- 2/13/16

FT attempts: 4, at South Dakota State -- 2/13/16

## SEASON STATS

				Total		3-Pointers		Free throws		Rebounds											
Opponent	Date	qs	min	fg-fga	pct	3fg-fga	pct	ft-fga	pct	off	def	tot	avg	pf	a	t/o	blk	stl	pts	avg	
BELMONT	11/11/16	*	28	6-15	.400	0-0	.000	0-2	.000	3	3	6	6.0	5	1	0	1	1	12	12.0	
DEFIANCE	11/12/16	*	13	2-6	.333	0-0	.000	3-8	.375	2	2	4	5.0	2	0	1	0	1	7	9.5	
TRINE	11/14/16	*	16	3-6	.500	0-0	.000	0-0	.000	2	3	5	5.0	3	1	1	2	0	6	8.3	
at Butler	11/16/16	*	12	1-3	.333	0-0	.000	0-0	.000	0	0	0	3.8	2	0	1	0	0	2	6.8	
OAKLAND	11/19/16		20	4-6	.667	0-0	.000	1-3	.333	3	2	5	4.0	2	0	1	0	1	9	7.2	
COASTAL CAROLINA	11/26/16	*	15	2-7	.286	0-0	.000	3-3	1.000	6	0	6	4.3	4	1	1	1	1	7	7.2	
at Kent State	11/30/16	*	27	2-3	.667	0-0	.000	4-4	1.000	1	5	6	4.6	4	0	2	1	0	8	7.3	
at Illinois	12/02/16	*	25	0-3	.000	0-1	.000	0-0	.000	1	1	2	4.3	2	0	2	1	0	0	6.4	
at Western Michigan	12/06/16	*	26	2-5	.400	0-0	.000	0-0	.000	2	0	2	4.0	4	0	2	0	0	4	6.1	
at UIC	12/10/16	*	25	2-5	.400	0-0	.000	1-1	1.000	1	3	4	4.0	3	0	2	0	0	5	6.0	
vs Miami (Ohio)	12/19/16	*	23	0-2	.000	0-0	.000	3-4	.750	0	1	1	3.7	4	0	2	0	0	3	5.7	
at Wright State	12/20/16		21	2-5	.400	0-0	.000	1-2	.500	2	0	2	3.6	4	0	2	1	1	5	5.7	
vs Eastern Kentucky	12/21/16	*	30	1-4	.250	0-0	.000	0-2	.000	3	4	7	3.8	2	3	4	0	1	2	5.4	
WESTERN ILLINOIS	12/28/16		18	0-2	.000	0-0	.000	0-0	.000	0	4	4	3.9	0	0	1	3	0	0	5.0	
at Oral Roberts	12/31/16		20	6-17	.353	0-0	.000	0-0	.000	3	3	6	4.0	3	0	1	1	1	12	5.5	
at South Dakota State	01/05/17	dnp		-	-	-	-	-	-	-	-	-	-	-	-	-	-	-	-	-	
at North Dakota State	01/07/17	dnp		-	-	-	-	-	-	-	-	-	-	-	-	-	-	-	-	-	
DENVER	01/12/17	*	22	3-11	.273	0-0	.000	3-3	1.000	2	2	4	4.0	4	0	1	1	0	9	5.7	
at South Dakota	01/18/17	*	30	2-5	.400	0-0	.000	3-3	1.000	3	4	7	4.2	0	0	0	1	1	7	5.8	
ORAL ROBERTS	01/21/17	*	32	3-9	.333	0-0	.000	2-3	.667	4	5	9	4.4	3	2	1	0	1	8	5.9	
OMAHA	01/25/17	*	34	4-7	.571	0-0	.000	1-2	.500	0	1	1	4.3	5	1	0	1	1	9	6.1	
IUPUI	01/28/17	*	29	8-11	.727	1-1	1.000	0-2	.000	1	1	2	4.2	3	1	2	0	1	17	6.6	
at Denver	02/04/17	*	26	3-11	.273	0-0	.000	2-6	.333	0	2	2	4.0	3	0	1	0	0	8	6.7	
SOUTH DAKOTA	02/09/17	*	20	1-7	.143	0-0	.000	1-2	.500	1	1	2	4.0	2	0	1	0	2	3	6.5	
NORTH DAKOTA STATE	02/11/17	*	21	3-7	.429	0-0	.000	0-0	.000	2	1	3	3.9	3	0	1	0	0	6	6.5	
at Omaha	02/15/17	*	30	4-9	.444	0-0	.000	2-2	1.000	1	0	1	3.8	4	1	4	0	1	10	6.6	
Totals			20	563	64-166	.386	1-2	.500	30-52	.577	43	48	91	3.8	71	11	34	14	14	159	6.6

Games played: 24  
 Minutes/game: 23.5  
 Points/game: 6.6  
 FG Pct: 38.6  
 3FG Pct: 50.0  
 FT Pct: 57.7

Rebounds/game: 3.8  
 Assists/game: 0.5  
 Turnovers/game: 1.4  
 Assist/turnover ratio: 0.3  
 Steals/game: 0.6  
 Blocks/game: 0.6

## CAREER STATS

			Total		3-Point		F-Throws		Rebounds											Scoring	
Season	gp-gs	min/avg	fg-fga	pct	fg-fga	pct	ft-fga	pct	off	def	tot	avg	pf	fo	ast	to	blk	stl	pts	avg	
2015-16	25-6	251/10.0	21-71	.296	0-0	.000	18-36	.500	13	27	40	1.6	41	0	2	15	4	5	60	2.4	
2016-17	24-20	563/23.5	64-166	.386	1-2	.500	30-52	.577	43	48	91	3.8	71	2	11	34	14	14	159	6.6	
TOTAL	49-26	814/16.6	85-237	.359	1-2	.500	48-88	.545	56	75	131	2.7	112	2	13	49	18	19	219	4.5	



SEASON HIGH	CATEGORY	CAREER HIGH
24, at UIC, 12/10/2016	Minutes	25, vs. Denver, 1/30/2016
9, two times	Points	9, four times
5, three times	Rebounds	6, at Northern Kentucky, 12/5/2015
2, vs Miami (Ohio), 12/19/2016	Assists	2, vs Miami (Ohio), 12/19/2016
2, two times	Steals	2, two times
1, six times	Blocks	1, nine times
4, at UIC, 12/10/2016	FG Made	4, two times
10, at Butler, 11/16/2016	FG Attempts	10, at Butler, 11/16/2016
—	3-PT Made	—
2, vs Miami (Ohio), 12/19/2016	3-PT Attempts	2, vs Miami (Ohio), 12/19/2016
3, two times	FT Made	7, at Northern Kentucky, 12/5/2015
4, three times	FT Attempts	8, at Northern Kentucky, 12/5/2015

## CAREER VS. SOUTH DAKOTA STATE

Season	gp-gs	min/avg	Total fg-fga	pct	3-Point fg-fga	pct	F-Throws ft-fga	pct	Rebounds off	def	tot	avg	pf	fo	ast	to	blk	stl	pts	avg
2015-16	3-0	16/5.3	1-1	1.000	0-0	.000	0-2	.000	0	0	0	0.0	2	0	0	1	0	0	2	0.7
2016-17	1-0	16/16.0	0-2	.000	0-0	.000	0-0	.000	1	0	1	1.0	2	0	0	1	1	0	0	0.0
TOTAL	4-0	32/8.0	1-3	.333	0-0	.000	0-2	.000	1	0	1	0.3	4	0	0	2	1	0	2	0.5

SINGLE-GAME HIGHS [all-time ranking]:

Points: 2, at South Dakota State -- 2/13/16

Rebounds: 1, at South Dakota State -- 01/05/17

Blocks: 1, at South Dakota State -- 01/05/17

FG made: 1, at South Dakota State -- 2/13/16

FG attempts: 2, at South Dakota State -- 01/05/17

FT attempts: 2, vs South Dakota State -- 03/05/16

## SEASON STATS

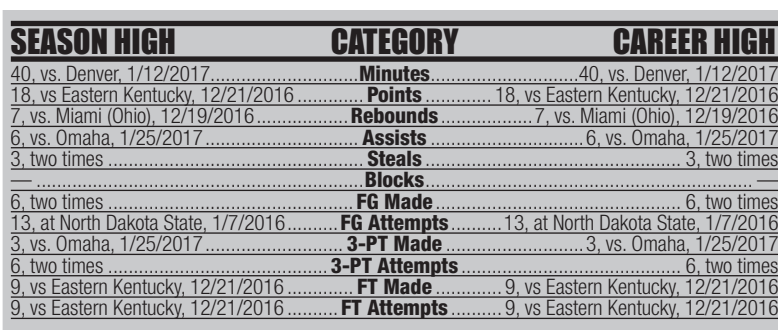
Opponent	Date	gs	min	Total		3-Pointers		Free throws		Rebounds				pf	a	t/o	blk	stl	pts	avg
				fg	pct	3fg	pct	ft	pct	off	def	tot	avg							
BELMONT	11/11/16	*	21	2-8	.250	0-0	.000	1-2	.500	0	1	1	1.0	3	0	1	0	0	5	5.0
DEFIANCE	11/12/16		20	3-8	.375	0-0	.000	0-0	.000	1	4	5	3.0	5	0	3	0	1	6	5.5
TRINE	11/14/16		18	2-5	.400	0-0	.000	1-4	.250	1	2	3	3.0	2	0	0	0	0	5	5.3
at Butler	11/16/16		25	3-10	.300	0-0	.000	3-4	.750	1	4	5	3.5	5	0	0	0	2	9	6.3
OAKLAND	11/19/16		13	1-3	.333	0-0	.000	2-2	1.000	1	0	1	3.0	4	0	1	0	0	4	5.8
COASTAL CAROLINA	11/26/16		22	2-9	.222	0-0	.000	0-0	.000	3	2	5	3.3	3	0	2	0	0	4	5.5
at Kent State	11/30/16		14	1-5	.200	0-0	.000	1-2	.500	1	0	1	3.0	5	0	1	1	0	3	5.1
at Illinois	12/02/16		21	1-3	.333	0-0	.000	0-0	.000	1	0	1	2.8	3	0	3	1	0	2	4.8
at Western Michigan	12/06/16		21	3-6	.500	0-0	.000	1-2	.500	0	2	2	2.7	3	0	0	0	1	7	5.0
at UIC	12/10/16		24	4-7	.571	0-0	.000	1-2	.500	1	1	2	2.6	4	1	2	1	2	9	5.4
vs Miami (Ohio)	12/19/16		21	1-5	.200	0-2	.000	0-0	.000	1	1	2	2.5	2	2	4	0	0	2	5.1
at Wright State	12/20/16		7	0-2	.000	0-0	.000	0-0	.000	0	2	2	2.5	1	0	1	0	0	0	4.7
vs Eastern Kentucky	12/21/16	dnp		-	-	-	-	-	-	-	-	-	-	-	-	-	-	-	-	-
WESTERN ILLINOIS	12/28/16		6	0-2	.000	0-0	.000	0-0	.000	0	1	1	2.4	1	0	0	0	0	0	4.3
at Oral Roberts	12/31/16		5	0-3	.000	0-0	.000	0-0	.000	0	0	0	2.2	5	0	1	0	0	0	4.0
at South Dakota State	01/05/17		16	0-2	.000	0-0	.000	0-0	.000	1	0	1	2.1	2	0	1	1	0	0	3.7
at North Dakota State	01/07/17		21	1-5	.200	0-0	.000	0-2	.000	1	2	3	2.2	5	0	0	0	0	2	3.6
DENVER	01/12/17		21	1-3	.333	0-1	.000	3-4	.750	1	1	2	2.2	1	1	1	1	0	5	3.7
at South Dakota	01/18/17		15	1-1	1.000	0-0	.000	1-1	1.000	0	1	1	2.1	4	0	0	1	0	3	3.7
ORAL ROBERTS	01/21/17		14	1-2	.500	0-0	.000	2-2	1.000	0	2	2	2.1	2	0	2	0	1	4	3.7
OMAHA	01/25/17		5	0-1	.000	0-0	.000	0-0	.000	2	1	3	2.2	1	0	1	0	0	0	3.5
IUPUI	01/28/17		12	0-0	.000	0-0	.000	0-0	.000	0	3	3	2.2	2	0	1	0	0	0	3.3
at Denver	02/04/17		14	0-1	.000	0-0	.000	1-2	.500	1	0	1	2.1	2	0	2	0	1	1	3.2
SOUTH DAKOTA	02/09/17		2	0-0	.000	0-0	.000	0-0	.000	0	0	0	2.0	0	0	1	0	0	0	3.1
NORTH DAKOTA STATE	02/11/17	dnp		-	-	-	-	-	-	-	-	-	-	-	-	-	-	-	-	-
at Omaha	02/15/17		2	0-1	.000	0-0	.000	0-0	.000	0	0	0	2.0	2	0	0	0	1	0	3.0
Totals		1	360	27-92	.293	0-3	.000	17-29	.586	17	30	47	2.0	67	4	28	6	9	71	3.0

Games played: 24  
Minutes/game: 15.0  
Points/game: 3.0  
FG Pct: 29.3  
3FG Pct: 0.0  
FT Pct: 58.6

Rebounds/game: 2.0  
Assists/game: 0.2  
Turnovers/game: 1.2  
Assist/turnover ratio: 0.1  
Steals/game: 0.4  
Blocks/game: 0.3

## CAREER STATS

Season	gp-gs	min/avg	Total fg-fga	pct	3-Point fg-fga	pct	F-Throws ft-fga	pct	Rebounds off	def	tot	avg	pf	fo	ast	to	blk	stl	pts	avg
2015-16	25-1	216/8.6	16-46	.348	0-0	.000	10-13	.769	10	25	35	1.4	39	0	0	10	3	5	42	1.7
2016-17	24-1	360/15.0	27-92	.293	0-3	.000	17-29	.586	17	30	47	2.0	67	5	4	28	6	9	71	3.0
TOTAL	49-2	576/11.8	43-138	.312	0-3	.000	27-42	.643	27	55	82	1.7	106	5	4	38	9	14	113	2.3



			Total		3-Point		F-Throws		Rebounds										Scoring	
Season	gp-gs	min/avg	fg-fga	pct	fg-fga	pct	ft-fta	pct	off	def	tot	avg	pf	fo	ast	to	blk	stl	pts	avg
2016-17	1-1	36/36.0	0-8	.000	0-2	.000	7-8	.875	1	1	2	2.0	1	0	5	1	0	0	7	7.0
TOTAL	1-1	36/36.0	0-8	.000	0-2	.000	7-8	.875	1	1	2	2.0	1	0	5	1	0	0	7	7.0

Points: 7, at South Dakota State -- 01/05/17  
Rebounds: 2, at South Dakota State -- 01/05/17  
Assists: 5, at South Dakota State -- 01/05/17  
FG attempts: 8, at South Dakota State -- 01/05/17  
3FG attempts: 2, at South Dakota State -- 01/05/17  
FT made: 7, at South Dakota State -- 01/05/17  
FT attempts: 8, at South Dakota State -- 01/05/17

				Total		3-Pointers		Free throws		Rebounds											
Opponent	Date	gs	min	fg-fga	pct	3fg-fga	pct	ft-fa	pct	off	def	tot	avg	pf	a	t/o	blk	stl	pts	avg	
BELMONT	11/11/16		21	1-6	.167	0-2	.000	2-2	1.000	0	2	2	2.0	1	0	2	0	0	4	4.0	
DEFIANCE	11/12/16		17	2-7	.286	0-0	.000	3-4	.750	0	0	0	1.0	1	3	1	0	3	7	5.5	
TRINE	11/14/16		22	3-6	.500	0-2	.000	0-0	.000	1	0	1	1.0	1	0	1	0	0	6	5.5	
at Butler	11/16/16		17	2-4	.500	1-2	.500	0-0	.000	0	1	1	1.0	0	1	0	0	0	5	5.5	
OAKLAND	11/19/16		13	1-3	.333	0-0	.000	4-4	1.000	0	0	0	0.8	2	1	1	0	2	6	5.6	
COASTAL CAROLINA	11/26/16		25	5-7	.714	0-1	.000	4-4	1.000	1	0	1	0.8	4	1	2	0	0	14	7.0	
at Kent State	11/30/16	*	31	3-10	.300	2-2	1.000	2-3	.667	1	1	2	1.0	2	2	2	0	0	10	7.4	
at Illinois	12/02/16	*	30	0-5	.000	0-2	.000	5-8	.625	1	3	4	1.4	1	1	1	0	1	5	7.1	
at Western Michigan	12/06/16	*	23	1-6	.167	0-0	.000	4-4	1.000	2	3	5	1.8	1	1	5	0	1	6	7.0	
at UIC	12/10/16	*	16	0-2	.000	0-0	.000	3-4	.750	0	3	3	1.9	0	0	2	0	1	3	6.6	
vs Miami (Ohio)	12/19/16	*	24	5-10	.500	2-5	.400	0-0	.000	1	6	7	2.4	3	1	4	0	1	12	7.1	
at Wright State	12/20/16	*	38	4-8	.500	2-3	.667	2-2	1.000	1	3	4	2.5	1	2	3	0	1	12	7.5	
vs Eastern Kentucky	12/21/16	*	34	4-8	.500	1-3	.333	9-9	1.000	1	4	5	2.7	1	2	5	0	2	18	8.3	
WESTERN ILLINOIS	12/28/16	*	30	2-7	.286	0-3	.000	1-1	1.000	0	1	1	2.6	3	4	4	0	1	5	8.1	
at Oral Roberts	12/31/16	*	33	5-8	.625	1-1	1.000	2-2	1.000	0	0	0	2.4	0	1	2	0	1	13	8.4	
at South Dakota State	01/05/17	*	36	0-8	.000	0-2	.000	7-8	.875	1	1	2	2.4	1	5	1	0	0	7	8.3	
at North Dakota State	01/07/17	*	38	5-13	.385	2-6	.333	0-0	.000	1	1	2	2.4	3	3	1	0	3	12	8.5	
DENVER	01/12/17	*	40	5-11	.455	2-2	1.000	4-6	.667	2	1	3	2.4	2	4	4	0	0	16	8.9	
at South Dakota	01/18/17	*	36	1-3	.333	0-2	.000	2-2	1.000	1	1	2	2.4	1	2	3	0	2	4	8.7	
ORAL ROBERTS	01/21/17	*	38	1-6	.167	0-3	.000	2-2	1.000	0	0	0	2.3	3	4	0	0	0	4	8.5	
OMAHA	01/25/17	*	39	4-9	.444	3-6	.500	4-4	1.000	0	0	0	2.1	1	6	1	0	2	15	8.8	
IUPUI	01/28/17	*	39	2-4	.500	0-0	.000	2-2	1.000	1	2	3	2.2	2	5	7	0	1	6	8.6	
at Denver	02/04/17	*	20	2-6	.333	0-3	.000	0-0	.000	0	2	2	2.2	4	2	1	0	1	4	8.4	
SOUTH DAKOTA	02/09/17	*	29	3-5	.600	2-3	.667	0-0	.000	1	1	2	2.2	0	2	2	0	0	8	8.4	
NORTH DAKOTA STATE	02/11/17	*	38	6-8	.750	1-1	1.000	3-5	.600	2	1	3	2.2	1	3	3	0	0	16	8.7</	

Games played: 26  
Minutes/game: 28.8  
Points/game: 8.5  
FG Pct: 40.1  
3FG Pct: 35.2  
FT Pct: 85.5

Rebounds/game: 2.1  
Assists/game: 2.3  
Turnovers/game: 2.3  
Assist/turnover ratio: 1.0  
Steals/game: 0.9

			Total		3-Point		F-Throws		Rebounds											Scoring	
Season	gp-gs	min/avg	fg-fga	pct	fg-fga	pct	ft-fta	pct	off	def	tot	avg	pf	fo	ast	to	blk	stl	pts	avg	
2016-17	26-20	750/28.8	69-172	.401	19-54	.352	65-76	.855	18	37	55	2.1	39	0	59	59	0	23	222	8.5	
TOTAL	26-20	750/28.8	69-172	.401	19-54	.352	65-76	.855	18	37	55	2.1	39	0	59	59	0	23	222	8.5	





SEASON HIGH	CATEGORY	CAREER HIGH
32, at Western Michigan, 12/6/2016	Minutes	32, at Western Michigan, 12/6/2016
22, at Butler, 11/16/2016	Points	22, at Butler, 11/16/2016
5, at Western Michigan, 12/6/2016	Rebounds	5, three times
2, three times	Assists	3, two times
2, two times	Steals	3, two times
1, vs Western Illinois, 12/28/2016	Blocks	1, three times
7, at Butler, 11/16/2016	FG Made	7, at Butler, 11/16/2016
11, two times	FG Attempts	14, vs. Western Michigan, 11/29/2015
4, at Butler, 11/16/2016	3-PT Made	4, at Butler, 11/16/2016
6, at Butler, 11/16/2016	3-PT Attempts	6, two times
4, two times	FT Made	4, two times
4, two times	FT Attempts	6, two times

• Named to the 2015-16 Summit League Winter/Spring Academic Honor Roll

## CAREER VS. SOUTH DAKOTA STATE

Season	gp-gs	min/avg	Total fg-fga	pct	3-Point fg-fga	pct	F-Throws ft-fa	pct	Rebounds off def tot avg	pf	fo	ast	to	blk	stl	Scoring pts avg
2015-16	3-0	42/14.0	1-8	.125	1-4	.250	4-4	1.000	2 7 9 3.0	6	0	3	4	1	0	7 2.3
TOTAL	3-0	42/14.0	1-8	.125	1-4	.250	4-4	1.000	2 7 9 3.0	6	0	3	4	1	0	7 2.3

SINGLE-GAME HIGHS [all-time ranking]:

Points: 5, South Dakota State -- 01/13/16

Rebounds: 5, vs South Dakota State -- 03/05/16

Assists: 2, vs South Dakota State -- 03/05/16

Blocks: 1, South Dakota State -- 01/13/16

FG made: 1, South Dakota State -- 01/13/16

FG attempts: 4, vs South Dakota State -- 03/05/16

3FG made: 1, South Dakota State -- 01/13/16

3FG attempts: 2, South Dakota State -- 01/13/16

FT made: 2, South Dakota State -- 01/13/16; vs South Dakota State -- 03/05/16

FT attempts: 2, South Dakota State -- 01/13/16; vs South Dakota State -- 03/05/16

## SEASON STATS

				Total		3-Pointers		Free throws		Rebounds											
Opponent	Date	gs	min	fg-fga	pct	3fg-fga	pct	ft-fa	pct	off	def	tot	avg	pf	a	t/o	blk	stl	pts	avg	
BELMONT	11/11/16	dnp	-	-	-	-	-	-	-	-	-	-	-	-	-	-	-	-	-	-	
DEFIANCE	11/12/16	dnp	-	-	-	-	-	-	-	-	-	-	-	-	-	-	-	-	-	-	
TRINE	11/14/16	26	4-10	.400	1-4	.250	3-3	1.000	1	0	1	1.0	0	1	1	0	2	12	12.0		
at Butler	11/16/16	29	7-11	.636	4-6	.667	4-4	1.000	0	1	1	1.0	1	2	4	0	1	22	17.0		
OAKLAND	11/19/16	*	29	2-9	.222	0-4	.000	0-0	.000	0	2	2	1.3	1	2	6	0	1	4	12.7	
COASTAL CAROLINA	11/26/16	27	3-9	.333	0-2	.000	0-2	.000	1	2	3	1.8	4	1	1	0	0	6	11.0		
at Kent State	11/30/16	18	0-6	.000	0-2	.000	2-2	1.000	2	1	3	2.0	4	2	1	0	0	2	9.2		
at Illinois	12/02/16	4	0-2	.000	0-0	.000	0-0	.000	0	1	1	1.8	1	0	2	0	0	0	7.7		
at Western Michigan	12/06/16	32	2-11	.182	0-3	.000	1-2	.500	1	4	5	2.3	3	1	3	0	2	5	7.3		
at UIC	12/10/16	21	0-3	.000	0-2	.000	0-0	.000	0	1	1	2.1	5	0	4	0	0	0	6.4		
vs Miami (Ohio)	12/19/16	dnp	-	-	-	-	-	-	-	-	-	-	-	-	-	-	-	-	-		
at Wright State	12/20/16	dnp	-	-	-	-	-	-	-	-	-	-	-	-	-	-	-	-	-		
vs Eastern Kentucky	12/21/16	dnp	-	-	-	-	-	-	-	-	-	-	-	-	-	-	-	-	-		
WESTERN ILLINOIS	12/28/16	20	1-3	.333	0-1	.000	0-0	.000	0	0	0	1.9	1	0	3	1	0	2	5.9		
at Oral Roberts	12/31/16	8	1-3	.333	0-0	.000	0-0	.000	1	2	3	2.0	0	0	1	0	0	2	5.5		
at South Dakota State	01/05/17	dnp	-	-	-	-	-	-	-	-	-	-	-	-	-	-	-	-	-		
at North Dakota State	01/07/17	dnp	-	-	-	-	-	-	-	-	-	-	-	-	-	-	-	-	-		
DENVER	01/12/17	dnp	-	-	-	-	-	-	-	-	-	-	-	-	-	-	-	-	-		
at South Dakota	01/18/17	dnp	-	-	-	-	-	-	-	-	-	-	-	-	-	-	-	-	-		
ORAL ROBERTS	01/21/17	7	0-0	.000	0-0	.000	0-0	.000	0	0	0	1.8	0	0	1	0	0	0	5.0		
OMAHA	01/25/17	5	0-2	.000	0-1	.000	0-0	.000	0	0	0	1.7	1	0	0	0	0	0	4.6		
IUPUI	01/28/17	13	0-3	.000	0-1	.000	0-0	.000	0	3	3	1.8	1	0	2	0	1	0	4.2		
at Denver	02/04/17	4	0-0	.000	0-0	.000	0-2	.000	0	2	2	1.8	0	0	1	0	0	0	3.9		
SOUTH DAKOTA	02/09/17	27	2-7	.286	1-2	.500	4-4	1.000	0	2	2	1.8	2	1	1	0	1	9	4.3		
NORTH DAKOTA STATE	02/11/17	24	4-8	.500	2-4	.500	1-2	.500	0	2	2	1.8	2	0	0	0	0	11	4.7		
at Omaha	02/15/17	16	2-6	.333	1-2	.500	0-0	.000	0	1	1	1.8	2	0	0	0	0	5	4.7		
Totals		1	310	28-93	.301	9-34	.265	15-21	.714	6	24	30	1.8	28	10	31	1	8	80	4.7	

Games played: 17

Minutes/game: 18.2

Points/game: 4.7

FG Pct: 30.1

3FG Pct: 26.5

FT Pct: 71.4

Rebounds/game: 1.8

Assists/game: 0.6

Turnovers/game: 1.8

Assist/turnover ratio: 0.3

Steals/game: 0.5

Blocks/game: 0.1

## CAREER STATS

Season	gp-gs	min/avg	Total fg-fga	pct	3-Point fg-fga	pct	F-Throws ft-fa	pct	Rebounds off def tot avg	pf	fo	ast	to	blk	stl	Scoring pts avg
2015-16	28-1	408/14.6	32-132	.242	11-54	.204	23-37	.622	17 38 55 2.0	57	0	23	41	2	23	98 3.5
2016-17	17-1	310/18.2	28-93	.301	9-34	.265	15-21	.714	6 24 30 1.8	28	1	10	31	1	8	80 4.7
TOTAL	45-2	718/16.0	60-225	.267	20-88	.227	38-58	.655	23 62 85 1.9	85	1	33	72	3	31	178 4.0



**RACHEL RINEHART**

Senior | 5-8  
Angola, Ind.  
Angola

**GUARD**

SEASON HIGH	CATEGORY	CAREER HIGH
40, vs. Omaha, 1/25/2017	Minutes	40, vs. Omaha, 1/25/2017
21, vs. Oral Roberts, 1/21/2017	Points	31, vs. Western Illinois, 1/2/2015
10, at Illinois, 12/2/2016	Rebounds	10, at Illinois, 12/2/2016
6, vs. Trine, 11/14/2016	Assists	8, two times
6, vs. Oral Roberts, 1/21/2017	Steals	6, two times
1, two times	Blocks	2, at Oral Roberts, 2/28/2014
10, vs. Oral Roberts, 1/21/2017	FG Made	12, vs. Western Illinois, 1/2/2015
16, at South Dakota State, 1/5/2017	FG Attempts	20, vs. Western Illinois, 1/2/2015
2, two times	3-PT Made	3, two times
6, at South Dakota State, 1/5/2017	3-PT Attempts	8, vs. Indiana, 11/12/2013
8, at UIC, 12/10/2016	FT Made	8, three times
11, at UIC, 12/10/2016	FT Attempts	11, at UIC, 12/10/2016

## CAREER VS. SOUTH DAKOTA STATE

Season	gp-gs	min/avg	Total fg-fga	pct	3-Point fg-fga	pct	F-Throws ft-fga	pct	Rebounds off	def	tot	avg	pf	fo	ast	to	blk	stl	pts	avg
2013-14	2-0	22/11.0	2-9	.222	1-6	.167	4-6	.667	0	2	2	1.0	5	0	1	2	0	1	9	4.5
2014-15	2-2	52/26.0	3-11	.273	0-4	.000	4-4	1.000	0	5	5	2.5	4	0	6	1	0	5	10	5.0
2015-16	3-3	84/28.0	3-11	.273	0-4	.000	7-11	.636	4	6	10	3.3	3	0	12	7	0	6	13	4.3
2016-17	1-1	37/37.0	6-16	.375	1-6	.167	0-0	.000	1	2	3	3.0	2	0	1	1	0	4	13	13.0
<b>TOTAL</b>	<b>8-6</b>	<b>195/24.4</b>	<b>14-47</b>	<b>.298</b>	<b>2-20</b>	<b>.100</b>	<b>15-21</b>	<b>.714</b>	<b>5</b>	<b>15</b>	<b>20</b>	<b>2.5</b>	<b>14</b>	<b>0</b>	<b>20</b>	<b>11</b>	<b>0</b>	<b>16</b>	<b>45</b>	<b>5.6</b>

SINGLE-GAME HIGHS [all-time ranking]:

Points: 13, at South Dakota State -- 01/05/17

Rebounds: 5, South Dakota State -- 01/13/16; at South Dakota State -- 2/13/16

Assists: 6, at South Dakota State -- 02/08/15; at South Dakota State -- 2/13/16

Steals: 5, at South Dakota State -- 02/08/15

FG made: 6, at South Dakota State -- 01/05/17

FG attempts: 16, at South Dakota State -- 01/05/17

3FG made: 1, at South Dakota State -- 01/05/17; at South Dakota State -- 01/11/14

3FG attempts: 6, at South Dakota State -- 01/05/17

FT made: 3, at South Dakota State -- 2/13/16

FT attempts: 5, at South Dakota State -- 2/13/16

- Named Summit League Player of the Week (12/29/14)
- 3-time Summit League Fall Academic Honor Roll (2014, 15 and 16)
- 2-time Summit League Commissioner's List of Academic Excellence (2015 and 16)
- Named Summit League Distinguished Scholar (2014-15)

## SEASON STATS

			Total			3-Pointers		Free throws		Rebounds											
Opponent	Date	gs	min	fg-fga	pct	3fg-fga	pct	ft-fa	pct	off	def	tot	avg	pf	a	t/o	blk	stl	pts	avg	
BELMONT	11/11/16	*	23	3-5	.600	1-1	1.000	0-1	.000	0	0	0	0.0	3	1	4	0	0	7	7.0	
DEFIANCE	11/12/16	*	17	3-6	.500	0-0	.000	0-0	.000	0	3	3	1.5	2	5	0	0	1	6	6.5	
TRINE	11/14/16	*	21	3-6	.500	0-1	.000	2-3	.667	2	3	5	2.7	5	6	2	0	1	8	7.0	
at Butler	11/16/16	*	29	3-5	.600	0-0	.000	4-4	1.000	1	3	4	3.0	3	5	3	0	1	10	7.8	
OAKLAND	11/19/16	*	28	3-6	.500	1-1	1.000	1-1	1.000	0	5	5	3.4	1	3	3	0	3	8	7.8	
COASTAL CAROLINA	11/26/16	*	16	0-0	.000	0-0	.000	0-0	.000	0	1	1	3.0	2	1	1	0	0	0	6.5	
at Kent State	11/30/16		26	5-6	.833	1-1	1.000	1-1	1.000	1	2	3	3.0	5	2	3	0	2	12	7.3	
at Illinois	12/02/16	*	24	1-3	.333	0-0	.000	0-0	.000	1	9	10	3.9	2	0	1	0	0	2	6.6	
at Western Michigan	12/06/16	*	19	1-9	.111	0-3	.000	0-0	.000	1	0	1	3.6	3	1	1	0	1	2	6.1	
at UIC	12/10/16	*	32	4-8	.500	0-2	.000	8-11	.727	4	1	5	3.7	4	3	3	0	2	16	7.1	
vs Miami (Ohio)	12/19/16	*	20	2-4	.500	0-2	.000	0-0	.000	3	2	5	3.8	3	2	3	0	2	4	6.8	
at Wright State	12/20/16	*	29	3-6	.500	0-2	.000	1-2	.500	1	3	4	3.8	1	2	3	0	0	7	6.8	
vs Eastern Kentucky	12/21/16	*	34	3-6	.500	2-3	.667	5-5	1.000	1	3	4	3.8	3	4	4	0	2	13	7.3	
WESTERN ILLINOIS	12/28/16	*	31	4-7	.571	0-1	.000	2-2	1.000	0	2	2	3.7	3	5	3	0	5	10	7.5	
at Oral Roberts	12/31/16	*	22	1-4	.250	0-1	.000	0-0	.000	1	4	5	3.8	2	0	2	0	2	2	7.1	
at South Dakota State	01/05/17	*	37	6-16	.375	1-6	.167	0-0	.000	1	2	3	3.8	2	1	1	0	4	13	7.5	
at North Dakota State	01/07/17	*	35	2-10	.200	0-2	.000	0-0	.000	0	2	2	3.6	2	2	2	1	3	4	7.3	
DENVER	01/12/17	*	35	6-9	.667	1-2	.500	0-0	.000	5	4	9	3.9	4	2	2	0	0	13	7.6	
at South Dakota	01/18/17	*	34	4-10	.400	0-2	.000	6-7	.857	0	4	4	3.9	4	4	3	0	0	14	7.9	
ORAL ROBERTS	01/21/17	*	38	10-15	.667	0-0	.000	1-1	1.000	1	3	4	4.0	5	1	3	0	6	21	8.6	
OMAHA	01/25/17	*	40	5-11	.455	0-1	.000	4-6	.667	1	3	4	4.0	1	3	3	0	3	14	8.9	
IUPUI	01/28/17	*	25	3-6	.500	0-0	.000	0-0	.000	0	2	2	3.9	3	1	2	0	1	6	8.7	
at Denver	02/04/17	*	37	4-12	.333	2-3	.667	0-0	.000	0	1	1	3.7	1	2	1	1	2	10	8.8	
SOUTH DAKOTA	02/09/17	*	20	0-1	.000	0-1	.000	0-0	.000	0	1	1	3.6	0	1	3	0	0	0	8.4	
NORTH DAKOTA STATE	02/11/17	*	21	5-5	1.000	0-0	.000	5-7	.714	0	6	6	3.7	4	3	0	0	3	15	8.7	
at Omaha	02/15/17	*	29	3-7	.429	1-1	1.000	3-4	.750	2	3	5	3.8	4	0	2	0	3	10	8.7	
Totals			25	722	87-183	.475	10-36	.278	43-55	.782	26	72	98	3.8	72	60	58	2	47	227	8.7

Games played: 26  
Minutes/game: 27.8  
Points/game: 8.7  
FG Pct: 47.5  
3FG Pct: 27.8  
FT Pct: 78.2

Rebounds/game: 3.8  
Assists/game: 2.3  
Turnovers/game: 2.2  
Assist/turnover ratio: 1.0  
Steals/game: 1.8  
Blocks/game: 0.1

## CAREER STATS

Season	gp-gs	min/avg	Total fg-fga	pct	3-Point fg-fga	pct	F-Throws ft-fga	pct	Rebounds off	def	tot	avg	pf	fo	ast	to	blk	stl	pts	avg
2013-14	30-0	374/12.5	43-107	.402	17-51	.333	44-66	.667	15	42	57	1.9	45	0	40	30	0	17	147	4.9
2014-15	30-29	787/26.2	94-235	.400	20-66	.303	67-91	.736	33	78	111	3.7	82	3	77	77	7	44	275	9.2
2015-16	30-23	780/26.0	70-178	.393	11-43	.256	43-66	.652	41	76	117	3.9	96	7	86	71	1	50	194	6.5
2016-17	26-25	722/27.8	87-183	.475	10-36	.278	43-55	.782	26	72	98	3.8	72	3	60	58	2	47	227	8.7
<b>TOTAL</b>	<b>116-77</b>	<b>2663/23.0</b>	<b>294-703</b>	<b>.418</b>	<b>58-196</b>	<b>.296</b>	<b>197-278</b>	<b>.709</b>	<b>115</b>	<b>268</b>	<b>383</b>	<b>3.3</b>	<b>295</b>	<b>13</b>	<b>263</b>	<b>236</b>	<b>10</b>	<b>158</b>	<b>843</b>	<b>7.3</b>



**NIA THOMAS** 2

Sophomore | 5-8  
Liberty Township, Ohio  
Lakota East  
Lincoln Trail College

**GUARD**

SEASON HIGH	CATEGORY	CAREER HIGH
13, three times	Minutes	13, three times
6, at Kent State, 11/30/2016	Points	6, at Kent State, 11/30/2016
3, two times	Rebounds	3, two times
1, vs Miami (Ohio), 12/19/2016	Assists	1, vs Miami (Ohio), 12/19/2016
2, vs North Dakota State, 2/11/2017	Steals	2, vs North Dakota State, 2/11/2017
	Blocks	
2, two times	FG Made	2, two times
4, at Kent State, 11/30/2016	FG Attempts	4, at Kent State, 11/30/2016
1, two times	3-PT Made	1, two times
1, three times	3-PT Attempts	1, three times
2, vs Miami (Ohio), 12/19/2016	FT Made	2, vs Miami (Ohio), 12/19/2016
2, four times	FT Attempts	2, four times

## SEASON STATS

Opponent	Date	gs	min	Total		3-Pointers		Free throws		Rebounds				pf	a	t/o	blk	stl	pts	avg
				fg-fga	pct	3fg-fga	pct	ft-fa	pct	off	def	tot	avg							
BELMONT	11/11/16	dnp		-	-	-	-	-	-	-	-	-	-	-	-	-	-	-	-	-
DEFIANCE	11/12/16	10	1-3	.333	0-0	.000	0-0	.000	0-0	.000	2	1	3	3.0	1	0	2	0	0	2.0
TRINE	11/14/16	dnp		-	-	-	-	-	-	-	-	-	-	-	-	-	-	-	-	-
at Butler	11/16/16	dnp		-	-	-	-	-	-	-	-	-	-	-	-	-	-	-	-	-
OAKLAND	11/19/16	1	0-0	.000	0-0	.000	0-0	.000	0-0	.000	0	0	0	1.5	0	0	0	0	0	1.0
COASTAL CAROLINA	11/26/16	3	0-0	.000	0-0	.000	0-0	.000	0-0	.000	0	0	0	1.0	0	0	0	0	0	0.7
at Kent State	11/30/16	11	2-4	.500	1-1	1.000	1-2	.500	0-0	.000	0	2	2	1.3	2	0	0	0	0	2.0
at Illinois	12/02/16	3	0-0	.000	0-0	.000	0-0	.000	0-0	.000	0	0	0	1.0	0	0	0	0	1	1.6
at Western Michigan	12/06/16	1	0-0	.000	0-0	.000	0-0	.000	0-0	.000	0	0	0	0.8	0	0	0	0	0	1.3
at UIC	12/10/16	dnp		-	-	-	-	-	-	-	-	-	-	-	-	-	-	-	-	-
vs Miami (Ohio)	12/19/16	13	1-2	.500	0-0	.000	2-2	1.000	1	2	3	1.1	3	1	1	1	0	0	4	1.7
at Wright State	12/20/16	3	0-0	.000	0-0	.000	0-0	.000	0-0	.000	0	0	0	1.0	0	0	0	0	0	1.5
vs Eastern Kentucky	12/21/16	2	0-2	.000	0-1	.000	0-0	.000	1	0	1	1.0	0	0	0	0	0	0	0	1.3
WESTERN ILLINOIS	12/28/16	dnp		-	-	-	-	-	-	-	-	-	-	-	-	-	-	-	-	-
at Oral Roberts	12/31/16	3	0-0	.000	0-0	.000	0-0	.000	0-0	.000	0	0	0	0.9	0	0	1	0	0	1.2
at South Dakota State	01/05/17	dnp		-	-	-	-	-	-	-	-	-	-	-	-	-	-	-	-	-
at North Dakota State	01/07/17	2	0-1	.000	0-0	.000	0-0	.000	0-0	.000	0	0	0	0.8	1	0	0	0	0	1.1
DENVER	01/12/17	dnp		-	-	-	-	-	-	-	-	-	-	-	-	-	-	-	-	-
at South Dakota	01/18/17	dnp		-	-	-	-	-	-	-	-	-	-	-	-	-	-	-	-	-
ORAL ROBERTS	01/21/17	dnp		-	-	-	-	-	-	-	-	-	-	-	-	-	-	-	-	-
OMAHA	01/25/17	dnp		-	-	-	-	-	-	-	-	-	-	-	-	-	-	-	-	-
IUPUI	01/28/17	1	0-0	.000	0-0	.000	0-0	.000	0-0	.000	0	0	0	0.8	0	0	0	0	0	1.0
at Denver	02/04/17	13	1-2	.500	0-0	.000	1-2	.500	0	0	0	0.7	3	0	0	0	0	0	3	1.2
SOUTH DAKOTA	02/09/17	13	2-2	1.000	1-1	1.000	0-0	.000	1	0	1	0.7	0	0	0	0	0	0	5	1.4
NORTH DAKOTA STATE	02/11/17	4	0-1	.000	0-1	.000	1-2	.500	1	0	1	0.7	0	0	0	0	0	2	1	1.4
<b>Totals</b>		<b>0</b>	<b>83</b>	<b>7-17</b>	<b>.412</b>	<b>2-4</b>	<b>.500</b>	<b>5-8</b>	<b>.625</b>	<b>6</b>	<b>5</b>	<b>11</b>	<b>0.7</b>	<b>10</b>	<b>1</b>	<b>4</b>	<b>0</b>	<b>3</b>	<b>21</b>	<b>1.4</b>

Games played: 15  
Minutes/game: 5.5  
Points/game: 1.4  
FG Pct: 41.2  
3FG Pct: 50.0  
FT Pct: 62.5

Rebounds/game: 0.7  
Assists/game: 0.1  
Turnovers/game: 0.3  
Assist/turnover ratio: 0.3  
Steals/game: 0.2



**HANNAH HESS** 5

Freshman | 5-9  
Oregon, Ohio  
Clay

**GUARD**

SEASON HIGH	CATEGORY	CAREER HIGH
	Minutes	
	Points	
	Rebounds	
	Assists	
	Steals	
	Blocks	
	FG Made	
	FG Attempts	
	3-PT Made	
	3-PT Attempts	
	FT Made	
	FT Attempts	



# FORT WAYNE SEASON STATS

RECORD:	OVERALL	HOME	AWAY	NEUTRAL
ALL GAMES	5-21	3-9	1-11	1-1
CONFERENCE	2-11	2-5	0-6	0-0
NON-CONFERENCE	3-10	1-4	1-5	1-1

#	Player	gp-gs	min	avg	Total		3-Point		F-Throw		Rebounds											
					fg-fga	fg%	3fg-fga	3fg%	ft-fga	ft%	off	def	tot	avg	pf	dq	a	to	blk	stl	pts	avg
01	Y. Ramirez-Tejeda	21-0	210	10.0	19-53	.358	0-0	.000	9-9	1.000	14	26	40	1.9	16	0	3	13	1	6	47	2.2
02	Nia Thomas	15-0	83	5.5	7-17	.412	2-4	.500	5-8	.625	6	5	11	0.7	10	0	1	4	0	3	21	1.4
03	KeShyra McCarver	23-16	501	21.8	42-128	.328	9-33	.273	35-47	.745	30	50	80	3.5	63	2	15	25	3	17	128	5.6
12	Anna Lappenküper	26-21	797	30.7	66-181	.365	16-66	.242	23-33	.697	8	58	66	2.5	55	2	41	72	2	22	171	6.6
13	De'Jour Young	26-26	808	31.1	123-298	.413	12-60	.200	69-81	.852	52	83	135	5.2	64	1	53	63	6	23	327	12.6
15	Selena Lozada	24-20	563	23.5	64-166	.386	1-2	.500	30-52	.577	43	48	91	3.8	71	2	11	34	14	14	159	6.6
21	Isis Parker	24-1	360	15.0	27-92	.293	0-3	.000	17-29	.586	17	30	47	2.0	67	5	4	28	6	9	71	3.0
22	Zaria Atkins	26-20	750	28.8	69-172	.401	19-54	.352	65-76	.855	18	37	55	2.1	39	0	59	59	0	23	222	8.5
23	Peyton Fallis	17-1	310	18.2	28-93	.301	9-34	.265	15-21	.714	6	24	30	1.8	28	1	10	31	1	8	80	4.7
31	Rachel Rinehart	26-25	722	27.8	87-183	.475	10-36	.278	43-55	.782	26	72	98	3.8	72	3	60	58	2	47	227	8.7
32	Lindley Kistler	6-0	64	10.7	9-19	.474	5-12	.417	7-10	.700	4	14	18	3.0	5	0	1	6	4	3	30	5.0
Team											50	38	88				21					
Total.....		26	5168		541-1402	.386	83-304	.273	318-421	.755	274	485	759	29.2	490	16	258	414	39	175	1483	57.0
Opponents.....		26	5174		686-1403	.489	138-347	.398	318-452	.704	271	600	871	33.5	463	9	363	391	111	191	1828	70.3

TEAM STATISTICS	FW	OPP
SCORING	1483	1828
Points per game	57.0	70.3
Scoring margin	-13.3	-
FIELD GOALS-ATT	541-1402	686-1403
Field goal pct	.386	.489
3 POINT FG-ATT	83-304	138-347
3-point FG pct	.273	.398
3-pt FG made per game	3.2	5.3
FREE THROWS-ATT	318-421	318-452
Free throw pct	.755	.704
F-Throws made per game	12.2	12.2
REBOUNDS	759	871
Rebounds per game	29.2	33.5
Rebounding margin	-4.3	-
ASSISTS	258	363
Assists per game	9.9	14.0
TURNOVERS	414	391
Turnovers per game	15.9	15.0
Turnover margin	-0.9	-
Assist/turnover ratio	0.6	0.9
STEALS	175	191
Steals per game	6.7	7.3
BLOCKS	39	111
Blocks per game	1.5	4.3
ATTENDANCE	9999	8794
Home games-Avg/Game	12-833	12-654
Neutral site-Avg/Game	-	2-472

Date	Opponent	Score	Att.
11/11/16	BELMONT	L 59-85	1049
11/12/16	DEFIANCE	W 76-58	525
11/14/16	TRINE	L 71-80	565
11/16/16	at Butler	L 64-70	565
^ 11/19/16	OAKLAND	L 61-82	1667
^ 11/26/16	COASTAL CAROLINA	L 57-72	1789
11/30/16	at Kent State	L 55-66	327
12/02/16	at Illinois	L 33-56	1173
12/06/16	at Western Michigan	L 35-61	558
12/10/16	at UIC	W 61-55	200
# 12/19/16	vs Miami (Ohio)	L 47-69	391
# 12/20/16	at Wright State	L 51-62	438
# 12/21/16	vs Eastern Kentucky	W 68-59	552
* 12/28/16	WESTERN ILLINOIS	L 53-75	568
* 12/31/16	at Oral Roberts	L 56-82	330
* 01/05/17	at South Dakota State	L 51-73	1276
* 01/07/17	at North Dakota State	L 56-68	638
* 01/12/17	DENVER	L 72-78	539
* 01/18/17	at South Dakota	L 59-87	1611
* 01/21/17	ORAL ROBERTS	L 59-75	657
* 01/25/17	OMAHA	W 65-62	546
* 01/28/17	IUPUI	L 48-62	843
* 02/04/17	at Denver	L 50-78	243
* 02/09/17	SOUTH DAKOTA	L 55-82	523
* 02/11/17	NORTH DAKOTA STATE	W 72-68	728
* 02/15/17	at Omaha	L 49-63	492

^ = at Memorial Coliseum

# = Wright State Invitational Presented by Holiday Inn

\* = Summit League game

Score by Periods	1st	2nd	3rd	4th	Totals
Fort Wayne	343	361	367	412	1483
Opponents	495	401	464	468	1828

# FORT WAYNE SUMMIT LEAGUE STATS

RECORD:	OVERALL	HOME	AWAY	NEUTRAL
ALL GAMES	2-11	2-5	0-6	0-0
CONFERENCE	2-11	2-5	0-6	0-0
NON-CONFERENCE	0-0	0-0	0-0	0-0

#	Player	gp-gs	min	avg	Total		3-Point		F-Throw		Rebounds				pf	dq	a	to	blk	stl	pts	avg
					fg-fga	fg%	3fg-fga	3fg%	ft-fta	ft%	off	def	tot	avg								
01	Y. Ramirez-Tejeda	10-0	123	12.3	13-31	.419	0-0	.000	4-4	1.000	9	14	23	2.3	5	0	2	7	1	4	30	3.0
02	Nia Thomas	6-0	36	6.0	3-6	.500	1-2	.500	2-4	.500	2	0	2	0.3	4	0	0	1	0	2	9	1.5
03	KeShyra McCarver	10-4	173	17.3	12-42	.286	1-8	.125	19-27	.704	13	15	28	2.8	22	1	6	8	1	5	44	4.4
12	Anna Lappenküper	13-13	448	34.5	44-116	.379	12-45	.267	14-21	.667	4	30	34	2.6	31	1	20	26	0	14	114	8.8
13	De'Jour Young	13-13	438	33.7	68-177	.384	4-24	.167	29-36	.806	33	41	74	5.7	37	1	36	30	6	14	169	13.0
15	Selena Lozada	11-9	282	25.6	37-96	.385	1-1	1.000	14-23	.609	17	24	41	3.7	30	1	5	13	7	8	89	8.1
21	Isis Parker	12-0	133	11.1	4-21	.190	0-1	.000	7-11	.636	6	11	17	1.4	27	2	1	10	3	3	15	1.3
22	Zaria Atkins	13-13	439	33.8	38-90	.422	11-32	.344	27-32	.844	9	11	20	1.5	21	0	44	30	0	11	114	8.8
23	Peyton Fallis	9-0	124	13.8	10-32	.313	4-11	.364	5-8	.625	1	12	13	1.4	9	0	1	9	1	2	29	3.2
31	Rachel Rinehart	13-13	404	31.1	53-113	.469	5-20	.250	21-27	.778	11	37	48	3.7	35	1	25	27	2	32	132	10.2
Team											27	15	42					11				
Total.....		13	2600		282-724	.390	39-144	.271	142-193	.736	132	210	342	26.3	221	7	140	172	21	95	745	57.3
Opponents.....		13	2600		364-680	.535	75-169	.444	150-198	.758	113	314	427	32.8	219	3	191	189	61	84	953	73.3

TEAM STATISTICS	FW	OPP	Date	Opponent	Score	Att.
SCORING	745	953	* 12/28/16	WESTERN ILLINOIS	L 53-75	568
Points per game	57.3	73.3	* 12/31/16	at Oral Roberts	L 56-82	330
Scoring margin	-16.0	-	* 01/05/17	at South Dakota State	L 51-73	1276
FIELD GOALS-ATT	282-724	364-680	* 01/07/17	at North Dakota State	L 56-68	638
Field goal pct	.390	.535	* 01/12/17	DENVER	L 72-78	539
3 POINT FG-ATT	39-144	75-169	* 01/18/17	at South Dakota	L 59-87	1611
3-point FG pct	.271	.444	* 01/21/17	ORAL ROBERTS	L 59-75	657
3-pt FG made per game	3.0	5.8	* 01/25/17	OMAHA	W 65-62	546
FREE THROWS-ATT	142-193	150-198	* 01/28/17	IUPUI	L 48-62	843
Free throw pct	.736	.758	* 02/04/17	at Denver	L 50-78	243
F-Throws made per game	10.9	11.5	* 02/09/17	SOUTH DAKOTA	L 55-82	523
REBOUNDS	342	427	* 02/11/17	NORTH DAKOTA STATE	W 72-68	728
Rebounds per game	26.3	32.8	* 02/15/17	at Omaha	L 49-63	492
Rebounding margin	-6.5	-				
ASSISTS	140	191				
Assists per game	10.8	14.7				
TURNOVERS	172	189				
Turnovers per game	13.2	14.5				
Turnover margin	+1.3	-				
Assist/turnover ratio	0.8	1.0				
STEALS	95	84				
Steals per game	7.3	6.5				
BLOCKS	21	61				
Blocks per game	1.6	4.7				
ATTENDANCE	4404	4590				
Home games-Avg/Game	7-629	6-765				
Neutral site-Avg/Game	-	0-0				

Score by Periods	1st	2nd	3rd	4th	Totals
Fort Wayne	188	173	173	211	745
Opponents	267	220	248	218	953

## TV/RADIO ROSTER



**#1 YULESKA RAMIREZ-TEJEDA**  
5-7 | Guard | Fr.  
Cambridge, Massachusetts



**#2 NIA THOMAS**  
5-8 | Guard | So.  
Liberty Township, Ohio



**#3 KeSHYRA MCCARVER**  
5-10 | Forward | Jr.  
Toledo, Ohio



**#5 HANNAH HESS**  
5-9 | Guard | Fr.  
Oregon, Ohio



**#12 ANNA LAPPENKÜPER**  
5-8 | Guard | Fr.  
Herne, Germany



**#13 De'JOUR YOUNG**  
5-7 | Guard | So.  
Fort Wayne, Indiana



**#15 SELENA LOZADA**  
6-2 | Forward | Sr.  
Perth Amboy, New Jersey



**#21 ISIS PARKER**  
6-0 | Forward | So.  
Cleveland, Ohio



**#22 ZARIA ATKINS**  
5-7 | Guard | Fr.  
Dudley, North Carolina



**#23 PEYTON FALLIS**  
5-10 | Guard | So.  
Indianapolis, Indiana



**#31 RACHEL RINEHART**  
5-8 | Guard | Sr.  
Angola, Indiana



**NIECEE NELSON**  
Head Coach  
Concordia Portland '02



**TY SHAW**  
Assistant Coach  
Albertson '02



**MARCIE ALBERTS**  
Assistant Coach  
Ohio State '97



**CAROL DUNCAN**  
Assistant Coach  
Purdue '06



**HALEY SEIBERT**  
Graduate Assistant Coach  
IPFW '15





# 1 • YULESKA RAMIREZ-TEJEDA • (YOU-less-Kuh) • G • Jr. • 5-7 • Cambridge, Mass. • Cambridge Rindge and Latin

Season	GP	GS	MPG	Pts	PPG	RPG	Ast	Blk	Stl	FG%	3FG%	FT%
	21	0	10.0	47	2.2	1.90	3	1	6	.358	.000	1.000
Career	GP	GS	MPG	Pts	PPG	RPG	Ast	Blk	Stl	FG%	3FG%	FT%
	21	0	10.0	47	2.2	1.90	3	1	6	.358	.000	1.000

Season High	Career High
10, at North Dakota State, 1/7/2017	Pts ... 10, at North Dakota State, 1/7/2017
7, vs Denver, 1/12/2017	Reb ... 7, vs Denver, 1/12/2017
1, three times	Ast ... 1, three times
3, at North Dakota State, 1/7/2017	Stl ... 3, at North Dakota State, 1/7/2017
1, at North Dakota State, 1/7/2017	Bik ... 1, at North Dakota State, 1/7/2017
5, at North Dakota State, 1/7/2017	FG ... 5, at North Dakota State, 1/7/2017
4, at South Dakota, 1/18/2017	3PT ... 4, at South Dakota, 1/18/2017
	FT ... 4, at South Dakota, 1/18/2017

Career Notes
10-point games ..... 1
5-point games ..... 4
5-rebound games ..... 1
3-steal games ..... 1



# 2 • NIA THOMAS • (KNEE-uh) • G • Fr. • 5-8 • Liberty Township, Ohio • Lakota East

Season	GP	GS	MPG	Pts	PPG	RPG	Ast	Blk	Stl	FG%	3FG%	FT%
	15	0	5.5	21	1.4	0.73	1	0	3	.412	.500	.625
Career	GP	GS	MPG	Pts	PPG	RPG	Ast	Blk	Stl	FG%	3FG%	FT%
	15	0	5.5	21	1.4	0.73	1	0	3	.412	.500	.625

Season High	Career High
6, at Kent State, 11/30/2016	Pts ..... 6, at Kent State, 11/30/2016
3, two times	Reb ..... 3, two times
1, vs Miami (Ohio), 12/19/2016	Ast ..... 1, vs Miami (Ohio), 12/19/2016
2, vs North Dakota State, 2/11/2017	Stl ..... 2, vs North Dakota State, 2/11/2017
	Bik ..... 1, two times
2, two times	FG ..... 2, two times
1, two times	3PT ..... 1, two times
2, vs Miami (Ohio), 12/19/2016	FT ..... 2, vs Miami (Ohio), 12/19/2016

Career Notes
5-point games ..... 2



# 3 • KeSHYRA McCARVER • (Key-Shy-Ruh) • F • Jr. • 5-10 • Toledo, Ohio • Whitmer

Season	GP	GS	MPG	Pts	PPG	RPG	Ast	Bk	Stl	FG%	3FG%	FT%
	23	16	21.8	128	5.6	3.48	15	3	17	.328	.273	.745
Career	GP	GS	MPG	Pts	PPG	RPG	Ast	Bk	Stl	FG%	3FG%	FT%
	82	39	19.2	423	5.2	3.24	66	10	50	.326	.304	.722

Season High	Career High
12, two times	Pts ..... 22, at Illinois, 11/14/2014
8, vs DePaul, 11/12/2016	Reb ..... 14, at Illinois, 11/14/2014
2, at UIC, 12/10/2016	Ast ..... 4, at Western Illinois, 1/31/2015
3, vs DePaul, 11/12/2016	Stl ..... 3, four times
1, three times	Bik ..... 2, at Omaha, 2/11/2016
5, two times	FG ..... 7, vs USC Upstate, 11/21/2015
2, two times	3PT ..... 4, vs Grace, 11/18/2014
6, vs Eastern Kentucky, 12/21/2016	FT ..... 11, at Illinois, 11/14/2014

Career Notes
Double-Double ..... 1
20-point games ..... 3
10-point games ..... 9
10-rebound games ..... 1
5-rebound games ..... 21
3-steal games ..... 4
3-three's games ..... 2



# 5 • HANNAH HESS • G • Fr. • 5-9 • Oregon, Ohio • Clay

Season	GP	GS	MPG	Pts	PPG	RPG	Ast	Bik	Stl	FG%	3FG%	FT%
Has Yet to Appear												
Career	GP	GS	MPG	Pts	PPG	RPG	Ast	Bik	Stl	FG%	3FG%	FT%
Has Yet to Appear												

Season High	Career High
	Pts ..... 1
	Reb ..... 1
	Ast ..... 1
	Stl ..... 1
	Bik ..... 1
	FG ..... 1
	3PT ..... 1
	FT ..... 1

Career Notes
--------------



# 12 • ANNA LAPPENKÜPER • (AHH-nuh LAH-pen-cooper) • G • Fr. • 5-8 • Herne, Germany • Otto Hahn Gymnasium

Season	GP	GS	MPG	Pts	PPG	RPG	Ast	Bk	Stl	FG%	3FG%	FT%
	26	21	30.7	171	6.6	2.54	41	2	22	.365	.242	.697
Career	GP	GS	MPG	Pts	PPG	RPG	Ast	Bk	Stl	FG%	3FG%	FT%
	26	21	30.7	171	6.6	2.54	41	2	22	.365	.242	.697

Season High	Career High
15, vs South Dakota, 2/9/2017	Pts ..... 15, vs South Dakota, 2/9/2017
5, three times	Reb ..... 5, three times
5, two times	Ast ..... 5, two times
3, at North Dakota State, 1/7/2017	Stl ..... 3, at North Dakota State, 1/7/2017
1, two times	Bik ..... 1, two times
6, vs South Dakota, 2/9/2017	FG ..... 6, vs South Dakota, 2/9/2017
3, vs Western Illinois, 12/28/2016	3PT ..... 3, vs Western Illinois, 12/28/2016
7, at Oral Roberts, 12/31/2016	FT ..... 7, at Oral Roberts, 12/31/2016

Career Notes
10-point games ..... 7
5-point games ..... 17
5-rebound games ..... 3
5-assist games ..... 2
3-three's games ..... 1
3-steal games ..... 1



# 13 • De'JOUR YOUNG • (D-zhur) • G • So. • 5-7 • Fort Wayne, Ind. • Concordia Lutheran

Season	GP	GS	MPG	Pts	PPG	RPG	Ast	Bk	Stl	FG%	3FG%	FT%
	26	26	31.1	327	12.6	5.19	53	6	23	.413	.200	.852
Career	GP	GS	MPG	Pts	PPG	RPG	Ast	Bk	Stl	FG%	3FG%	FT%
	56	47	26.7	530	9.5	4.32	87	14	56	.411	.253	.784

Season High	Career High
21, vs Oakland, 11/19/2016	Pts ..... 21, vs Oakland, 11/19/2016
11, two times	Reb ..... 11, two times
5, three times	Ast ..... 5, three times
5, vs Omaha, 1/25/2017	Stl ..... 5, vs Grace, 11/16/2015
1, two times	Bik ..... 2, two times
7, five times	FG ..... 7, five times
3, vs Oakland, 11/19/2016	3PT ..... 3, vs Oakland, 11/19/2016
8, vs Oakland, 11/19/2016	FT ..... 8, vs Oakland, 11/19/2016

Career Notes
Double-Double ..... 2
20-point games ..... 2
10-point games ..... 24
10-rebound games ..... 3
5-assist games ..... 3
3-steal games ..... 6
5-5-5 games ..... 3



# 15 • SELENA LOZADA • (Lo-zaah-Duh) • F • Sr. • 6-2 • Perth Amboy, N.J. • Western Guilford

Season	GP	GS	MPG	Pts	PPG	RPG	Ast	Blk	Stl	FG%	3FG%	FT%
	24	20	23.5	159	6.6	3.79	11	14	14	.386	.500	.577
Career	GP	GS	MPG	Pts	PPG	RPG	Ast	Blk	Stl	FG%	3FG%	FT%
	49	26	16.6	219	4.5	2.67	13	18	19	.359	.500	.545

Season High	Career High
17, vs IUPUI, 1/28/2017	Pts ..... 17, vs IUPUI, 1/28/2017
9, vs Oral Roberts, 1/21/2017	Reb ..... 9, vs Oral Roberts, 1/21/2017
3, vs Eastern Kentucky, 12/21/2016	Ast ..... 3, vs Eastern Kentucky, 12/21/2016
2, vs South Dakota, 2/9/2017	Stl ..... 2, three times
3, vs Western Illinois, 12/28/2016	Bik ..... 3, vs Western Illinois, 12/28/2016
6, two times	FG ..... 6, two times
1, vs IUPUI, 1/28/2017	3PT ..... 1, vs IUPUI, 1/28/2017
4, at Kent State, 11/30/2016	FT ..... 7, vs Trine, 11/16/2015

Career Notes
10-point games ..... 6
5-point games ..... 20
5-rebound games ..... 11



# 21 • ISIS PARKER • F • So. • 6-0 • Cleveland, Ohio • Solon

Season	GP	GS	MPG	Pts	PPG	RPG	Ast	Blk	Stl	FG%	3FG%	FT%
	24	1	15.0	71	3.0	1.96	4	6	9	.293	.000	.586
Career	GP	GS	MPG	Pts	PPG	RPG	Ast	Blk	Stl	FG%	3FG%	FT%
	49	2	11.8	113	2.3	1.67	4	9	14	.312	.000	.643

Season High	Career High
9, two times	Pts ..... 9, four times
5, three times	Reb ..... 6, at Northern Kentucky, 12/5/2015
2, vs Miami (Ohio), 12/19/2016	Ast ..... 2, vs Miami (Ohio), 12/19/2016
2, two times	Stl ..... 2, two times
1, six times	Bik ..... 1, nine times
4, at UIC, 12/10/2016	FG ..... 4, two times
	3PT ..... 1
3, two times	FT ..... 7, at Northern Kentucky, 12/5/2015

Career Notes
5-point games ..... 12
5-rebound games ..... 5

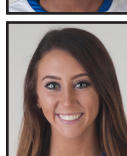


# 22 • ZARIA ATKINS • G • Fr. • 5-7 • Dudley, N.C. • Southern Wayne

22 • ZAINA ATKINS • G • H. • 5-7 • Dudley, N.C. • Southern Wayne												
Season	GP	GS	MPG	Pts	PPG	RPG	Ast	Blk	Stl	FG%	3FG%	FT%
	26	20	28.8	222	8.5	2.12	59	0	23	.401	.352	.855
Career	GP	GS	MPG	Pts	PPG	RPG	Ast	Blk	Stl	FG%	3FG%	FT%
	26	20	28.8	222	8.5	2.12	59	0	23	.401	.352	.855

Season High	Career High
18, vs Eastern Kentucky, 12/21/2016	Pts ..... 18, vs Eastern Kentucky, 12/21/2016
7, vs Miami (Ohio), 12/19/2016	Reb ..... 7, vs Miami (Ohio), 12/19/2016
6, vs Omaha, 1/25/2017	Ast ..... 6, vs Omaha, 1/25/2017
3, two times	Stl ..... 3, two times
	Bik ..... 1
6, two times	FG ..... 6, two times
3, vs Omaha, 1/25/2017	3PT ..... 3, vs Omaha, 1/25/2017
9, vs Eastern Kentucky, 12/21/2016	FT ..... 9, vs Eastern Kentucky, 12/21/2016

Career Notes
10-point games ..... 10
5-point games ..... 18
5-rebound games ..... 3
5-assist games ..... 3
3-steal games ..... 2

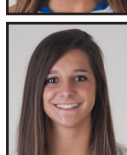


# 23 • PEYTON FALLIS • (Fau-liss) • G • So. • 5-10 • Indianapolis, Ind. • Heritage Christian

23 • PEYTON FALLS • (rau-hiss) • G • So. • 5-10 • Indianapolis, Ind. • Heritage Christian												
Season	GP	GS	MPG	Pts	PPG	RPG	Ast	Blk	Stl	FG%	3FG%	FT%
	17	1	18.2	80	4.7	1.76	10	1	8	.301	.265	.714
Career	GP	GS	MPG	Pts	PPG	RPG	Ast	Blk	Stl	FG%	3FG%	FT%
	45	2	16.0	178	4.0	1.89	33	3	31	.267	.227	.655

Season High	Career High
22, at Butler, 11/16/2016	Pts ..... 22, at Butler, 11/16/2016
5, at Western Michigan, 12/6/2016	Reb ..... 5, three times
2, three times	Ast ..... 3, two times
2, vs Trine, 11/14/2016	Stl ..... 3, two times
1, vs Western Illinois, 12/28/2016	Bik ..... 1, three times
7, at Butler, 11/16/2016	FG ..... 7, at Butler, 11/16/2016
4, at Butler, 11/16/2016	3PT ..... 4, at Butler, 11/16/2016
5, at Illinois, 12/2/2016	FT ..... 5, at Illinois, 12/2/2016

Career Notes
20-point games ..... 1
10-point games ..... 5
5-point games ..... 16
5-rebound games ..... 3
3-steal games ..... 1
3-three's games ..... 3
Games with a 3 ..... 10



# 31 • RACHEL RINEHART • G • Sr. • 5-8 • Angola, Ind. • Angola

31 • RACHEL RINEHART • G • Sr. • 5-6 • Angola, Ind. • Angola												
Season	GP	GS	MPG	Pts	PPG	RPG	Ast	Blk	Stl	FG%	3FG%	FT%
	26	25	27.8	227	8.7	3.77	60	2	47	.475	.278	.782
Career	GP	GS	MPG	Pts	PPG	RPG	Ast	Blk	Stl	FG%	3FG%	FT%
	116	77	23.0	843	7.3	3.30	263	10	158	.418	.296	.709

Season High	Career High
21, vs Oral Roberts, 1/21/2017	Pts ..... 31, vs Western Illinois, 12/2/2015
10, at Illinois, 12/2/2016	Reb ..... 10, at Illinois, 12/2/2016
6, vs Trine, 11/14/2016	Ast ..... 8, two times
6, vs Oral Roberts, 1/21/2017	Stl ..... 6, two times
1, two times	Bik ..... 2, at Oral Roberts, 2/28/2014
10, vs Oral Roberts, 1/21/2017	FG ..... 12, vs Western Illinois, 12/2/2015
2, two times	3PT ..... 3, two times
8, at UIC, 12/10/2016	FT ..... 8, three times

Career Notes
30-point games ..... 1
20-point games ..... 5
10-point games ..... 38
5-assist games ..... 16
3-steal games ..... 16
5-5-5 games ..... 6
3-three's games ..... 2



**NIECEE (KNEE-see) NELSON**  
Head Coach - 1st Year  
Concordia Portland '02



**TY SHAW**  
Assistant Coach  
Albertson '02



**MARCIE ALBERTS**  
Assistant Coach  
Ohio State '97



**CAROL DUNCAN**  
Assistant Coach  
Purdue '06



**HALEY SEIBERT**  
GA Coach  
IPFW '15