

# FORT WAYNE

# WOMEN'S BASKETBALL

## NOVEMBER (1-6)

11/6	INDIANA TECH (EXHIBITION)	W, 78-46
11/11	BELMONT	L, 85-59
11/12	DEFIANCE	W, 76-58
11/14	TRINE	L, 80-71
11/16	at Butler	L, 70-64
11/19	OAKLAND	L, 82-61
11/26	COASTAL CAROLINA	L, 72-57
11/30	at Kent State	L, 66-55

## DECEMBER (2-6)

12/2	at Illinois	L, 56-33
12/6	at Western Michigan	L, 61-35
12/10	at UIC	W, 61-55
<b>WRIGHT STATE INVITATIONAL (DEC. 19-21)</b>		
12/19	vs. Miami (Ohio)	L, 69-47
12/20	at Wright State	L, 62-51
12/21	vs. Eastern Kentucky	W, 69-58
12/28	WESTERN ILLINOIS •	L, 75-53
12/31	at Oral Roberts •	L, 82-56

## JANUARY (1-5)

1/5	at South Dakota State •	L, 73-51
1/7	at North Dakota State •	L, 68-56
1/12	DENVER •	L, 78-72
1/18	at South Dakota •	L, 87-59
1/21	ORAL ROBERTS •	L, 75-59
1/25	OMAHA •	W, 65-62
1/28	IUPUI • (PINK OUT)	2 P.M.

## FEBRUARY (0-0)

2/4	at Denver •	3 P.M.
2/9	SOUTH DAKOTA •	6 P.M.
2/11	NORTH DAKOTA STATE •	3 P.M.
2/15	at Omaha •	8 P.M.
2/18	SOUTH DAKOTA STATE •	4 P.M.
2/22	at Western Illinois •	8 P.M.
2/25	at IUPUI •	3 P.M.

## MARCH (0-0)

### SUMMIT LEAGUE TOURNAMENT (Feb. 4-7)

4-5	Quarterfinals	TBD
6	Semifinals	TBD
7	Championship	TBD

• Summit League Games

**CAPS/BOLD = Home Games | All Times Eastern**

## FORT WAYNE REFERENCES

As a part of the Fort Wayne athletic department's rebranding effort that began in 2016, we respectfully ask to refer to any athletic-related subjects as "Fort Wayne" or the "Fort Wayne Mastodons." Please refer to the school as "IPFW" or "Indiana University - Purdue University Fort Wayne". "IPFW" is not acceptable when referring to the athletic teams. References of "Fort Wayne University" or "University of Fort Wayne" **ARE NOT ACCEPTABLE IN ANY CONTEXT.** Please do not use "Lady 'Dons" when referring to women's teams.



### LAST GAME:

W, 65-62 vs Omaha (Jan. 25)

### COACH:

Niece Nelson | 1st Season

### SCORING LEADER:

De'Jour Young | 12.8 ppg

### REBOUNDING LEADER:

De'Jour Young | 5.0 rpg

### ASSIST LEADER:

Rachel Rinehart | 2.5 apg

### STEAL LEADER:

Rachel Rinehart | 1.8 spg

### BLOCK LEADER:

Selena Lozada | 0.7 bpg

## FORT WAYNE MASTODONS

4-17, 1-7 SUMMIT LEAGUE

## VS

## IUPUI JAGUARS

15-6, 5-3 SUMMIT LEAGUE



# IUPUI

### LAST GAME:

W, 76-72 at Western Illinois (Jan. 25)

### COACH:

Austin Parkinson | 7th Season

### SCORING LEADER:

Danielle Lawrence | 15.7 ppg

### REBOUNDING LEADER:

Mikale Rogers | 7.7 rpg

### ASSIST LEADER:

Danielle Lawrence | 2.3 apg

### STEAL LEADER:

Danielle Lawrence and Sydney Hall | 1.1 spg

### BLOCK LEADER:

Mikale Rogers | 2.3 bpg

### TALE OF THE TAPE

CATEGORY	FORT WAYNE	IUPUI
POINTS SCORED	57.6	67.8
POINTS ALLOWED	70.2	58.5
FG PCT.	.381	.434
OPP. FG PCT.	.474	.404
3-POINT PCT.	.269	.388
OPP. 3-POINT PCT.	.392	.319
FREE THROW PCT.	.792	.753
REBOUNDS	30.4	34.3
REBOUND MARGIN	-4.4	+1.5
ASSISTS	10.0	13.9
TURNOVERS	16.5	14.5
STEALS	6.7	6.0
BLOCKED SHOTS	1.6	3.5

## GAMEDAY INFORMATION - PINK OUT

**WHEN:** Saturday, January 28 | 2 p.m.

**WHERE:** Fort Wayne, Ind. | Gates Sports Center (1,800)

**LIVE VIDEO:** Fort Wayne Sidarm All-Access

**LIVE AUDIO:** Fort Wayne Stretch Internet | Mike Maahs, play-by-play

**LIVE STATS:** Fort Wayne Sidarm Live Stats

**SERIES HISTORY:** IUPUI leads 17-12

**LAST MEETING:** IUPUI won 63-52 | February 21, 2016 | Indianapolis, Ind.

## MASTODON PROBABLE STARTERS (SUBJECT TO CHANGE)



### Anna Lappenküper

5-8 Fr.

Herne, Germany / Otto Hahn Gymnasium

GP	GS	PPG	RPG	Ast	FG%	3FG%	FT%
21	16	6.5	2.57	31	.369	.268	.818



### De'Jour Young

5-7 So.

Fort Wayne, Ind. / Concordia Lutheran

GP	GS	PPG	RPG	Ast	FG%	3FG%	FT%
21	21	12.8	4.95	42	.422	.222	.882



### Selena Lozada

6-2 Sr.

Perth Amboy, N.J. / Western Guilford / Guilford Technical CC

GP	GS	PPG	RPG	Ast	FG%	3FG%	FT%
19	15	6.1	4.26	9	.372	.000	.625



### Zaria Atkins

5-7 Fr.

Dudley, N.C. / Southern Wayne

GP	GS	PPG	RPG	Ast	FG%	3FG%	FT%
21	15	8.8	2.14	44	.367	.340	.870



### Rachel Rinehart

5-8 Sr.

Angola, Ind. / Angola

GP	GS	PPG	RPG	Ast	FG%	3FG%	FT%
21	20	8.9	3.95	53	.474	.226	.795

## IUPUI PROBABLE STARTERS (SUBJECT TO CHANGE)

#	Name	Ht.	Cl.	Hometown	PPG	RPG	APG	FG%	3FG%	FT%
12	Caitlyn Tolen	5-10	Sr.	Otterbein, Ind.	6.5	2.0	2.2	.396	.382	.704
14	Danielle Lawrence	5-9	Jr.	Louisville, Ky.	15.7	4.4	2.3	.391	.340	.781
32	Jenna Gunn	6-0	Jr.	Mason, Ohio	6.6	6.0	2.1	.496	.200	.742
33	Mikale Rogers	6-2	Sr.	Indianapolis, Ind.	13.9	7.7	1.4	.446	.182	.718
42	Sydney Hall	5-6	So.	Fishers, Ind.	10.6	2.8	1.8	.480	.481	.789

## 2016-17 SUMMIT LEAGUE STANDINGS

(as of 1/27/2017)

Team	Summit				Overall					
	Rec.	Pct.	PF	PA	Rec.	Pct.	PF	PA	Last 10	Strk.
South Dakota	7-1	0.875	579	477	18-3	0.857	1579	1333	9-1	Won 5
South Dakota State	7-1	0.875	571	473	16-4	0.800	1384	1189	8-2	Won 6
IUPUI	5-3	0.625	492	479	15-6	0.714	1423	1229	7-3	Won 4
Western Illinois	5-3	0.625	608	557	15-6	0.714	1681	1394	7-3	Lost 2
Oral Roberts	3-5	0.375	486	503	11-10	0.524	1395	1329	4-6	Lost 1
Omaha	3-5	0.375	543	523	10-11	0.476	1452	1323	4-6	Lost 1
North Dakota State	3-5	0.375	550	619	5-16	0.238	1378	1573	3-7	Lost 4
Denver	2-6	0.250	516	585	5-16	0.238	1347	1483	2-8	Won 1
Fort Wayne	1-7	0.125	471	600	4-17	0.190	1209	1475	2-8	Won 1

## 2016-17 SUMMIT LEAGUE PLAYERS OF THE WEEK

Date	Player	Pos.	School	Jan. 30
Nov. 14	Allison Arens	G	South Dakota	Feb. 6
Nov. 21	Macy Miller	G	South Dakota State	Feb. 14
	Emily Clemens	G	Western Illinois	Feb. 20
Nov. 29	Emily Clemens	G	Western Illinois	Feb. 27
Dec. 5	Mikale Rogers	C	IUPUI	
	Maria Martianez	F	Oral Roberts	
Dec. 12	Jaycee Bradley	G	South Dakota	
	Emily Clemens	G	Western Illinois	
Dec. 19	Mikaela Shaw	G	Omaha	
Dec. 26	Mikale Rogers	C	IUPUI	
Jan. 2	Allison Arens	G	South Dakota	
Jan. 9	Taylor Higginbotham	G	Western Illinois	
Jan. 17	Morgan Blumer	G	Western Illinois	
Jan. 23	Madison Guebert	G	South Dakota State	

## SUMMIT LEAGUE COMPOSITE SCHEDULE

### Wednesday, December 28

Ind.-Northwest 36, IUPUI 89  
 Denver 64, South Dakota 70  
 South Dakota State 69, North Dakota State 66  
 Oral Roberts 67, Omaha 65

### Saturday, December 31

North Dakota State 86, Denver 80  
 South Dakota State 62, South Dakota 65  
 Western Illinois 52, IUPUI 66

### Sunday, January 1

York (Neb.) 37, Omaha 106

### Wednesday, January 4

South Dakota 73, North Dakota State 83

### Thursday, January 5

IUPUI 44, Omaha 64  
 Denver 62, Western Illinois 87

### Saturday, January 7

IUPUI 62, South Dakota 75  
 Omaha 64, South Dakota State 76  
 Oral Roberts 72, Western Illinois 76

### Wednesday, January 11

IUPUI 49, South Dakota State 68  
 Western Illinois 78, Omaha 74  
 South Dakota 69, Oral Roberts 47

### Saturday, January 14

South Dakota State 78, Oral Roberts 57  
 Denver 71, IUPUI 49  
 South Dakota 60, Omaha 52  
 North Dakota State 81, Western Illinois 110

### Wednesday, January 18

Omaha 80, North Dakota State 60  
 South Dakota State 72, Denver 63

### Thursday, January 19

Oral Roberts 41, IUPUI 53

### Saturday, January 21

Western Illinois 58, South Dakota State 73  
 Omaha 82, Denver 73  
 North Dakota State 58, IUPUI 71

### Wednesday, January 25

IUPUI 76, Western Illinois 72  
 Denver 47, Oral Roberts 45

### Thursday, January 26

North Dakota State 48, South Dakota 80

### Saturday, January 28

Western Illinois at South Dakota 2 P.M.  
 South Dakota State at Omaha 3 P.M.  
 Oral Roberts at North Dakota State 3 P.M.

### Wednesday, February 1

Western Illinois at Oral Roberts 8 P.M.  
 South Dakota at Denver 9 P.M.

### Thursday, February 2

Omaha at IUPUI 7 P.M.  
 North Dakota State at South Dakota State 8 P.M.

### Saturday, February 4

IUPUI at Oral Roberts 1:30 P.M.  
 South Dakota at South Dakota State 3 P.M.  
 Omaha at Western Illinois 5:30 P.M.

### Wednesday, February 8,

Western Illinois at North Dakota State 6 P.M.  
 Oral Roberts at South Dakota State 8 P.M.  
 IUPUI at Denver 9 P.M.

### Saturday, February 11

Omaha at Oral Roberts 1:30 P.M.  
 South Dakota State at IUPUI 3 P.M.  
 Western Illinois at Denver 3 P.M.

### Wednesday, February 15

South Dakota State at Western Illinois 8 P.M.  
 Denver at North Dakota State 8 P.M.  
 Oral Roberts at South Dakota 8 P.M.

### Saturday, February 18

Omaha at South Dakota 2 P.M.  
 IUPUI at North Dakota State 2 P.M.

### Sunday, February 19

Oral Roberts at Denver 1 P.M.

### Wednesday, February 22

South Dakota at IUPUI 7 P.M.  
 North Dakota State at Omaha 8 P.M.

### Thursday, February 23

Denver at South Dakota State 8 P.M.

### Saturday, February 25

North Dakota State at Oral Roberts 1:30 P.M.  
 Denver at Omaha 3 P.M.  
 South Dakota at Western Illinois 5:30 P.M.

## FORT WAYNE AT A GLANCE

### GENERAL INFO

Address	2101 E. Coliseum Blvd.
City/Zip	Fort Wayne, IN / 46805
Founded	1964
Enrollment	13,459
Nickname	Mastodons
Colors	Royal Blue and White
Affiliation	NCAA Division I
Conference	The Summit League
Chancellor	Vicky Carwein
Athletic Director	Kelley Hartley Hutton

### MEDIA SERVICES

Asst. Director / WBB Contact	Brian Alden
E-mail	aldenbs@ipfw.edu
Office Phone	(260) 481-6646
Cell Phone	(859) 468-8963
Office Fax	(260) 481-6002

### COACHING STAFF

Head Coach	Niecee Nelson
Alma Mater 'Yr.	Concordia Portland '02
Record at School/Yrs.	4-17 / 1st
Career Record/Yrs.	Same
Assistant Coach	Ty Shaw (1st season)
Alma Mater 'Yr.	Albertson '02
Assistant Coach	Marcie Alberts (4th season)
Alma Mater 'Yr.	Ohio State '97
Assistant Coach	Carol Duncan (1st season)
Alma Mater 'Yr.	Purdue '06
Graduate Assistant Coach	Haley Seibert (2nd season)
Alma Mater 'Yr.	IPFW '15

### SEASON IN REVIEW

2015-16 Overall Record	7-23
2015-16 Summit Record/Finish	3-13 / 7th
Letterwinners Returning/Lost	6 / 6
Starters Returning/Lost	3 / 2

### HISTORY

First Year of Basketball	1976-77
First Year of NCAA Division I Basketball	2001-02
First Year in The Summit League	2007-08
All-Time Record	461-617
All-Time Division I Record	154-300
All-Time Summit League Record	69-91
All-time NCAA Tournament Record	0-3
Years in Post-Season play	12
Last Post-Season Game	2013-14 (WBI)
Result	L, 84-71 at UIC

First Varsity Game	12/9/76 at Huntington; L, 41-38
500th Game	1/9/97 at Saint Joseph's (IN); W, 73-61
750th Game	1/25/06 vs. Butler; L, 70-60
1,000th Game	3/19/14 at UIC; L, 84-71

First Program Victory	12/11/76 vs. Grace; W, 72-31
250th Program Victory	2/10/96 at Kentucky Wesleyan; W, 91-76

FORT WAYNE MASTODONS ROSTER

No.	Name	Ht.	Pos.	Cl.	Hometown	High School / Previous School
1	Yuleska Ramirez-Tejeda ( <i>YOU-less-kuh</i> )	5-7	G	Fr.	Cambridge, Mass.	Cambridge Rindge and Latin
2	Nia Thomas ( <i>KNEE-uh</i> )	5-8	G	So.	Liberty Township, Ohio	Lakota East / Lincoln Trail College
3	KeShyra McCarver ( <i>Key-SHY-Ruh</i> )	5-10	F	Jr.	Toledo, Ohio	Whitmer
5	Hannah Hess	5-9	G	Fr.	Oregon, Ohio	Clay
12	Anna Lappenküper ( <i>AHH-nuh LAH-pen-cooper</i> )	5-8	G	Fr.	Herne, Germany	Otto Hahn Gymnasium
13	De'Jour Young ( <i>D-zhur</i> )	5-7	G	So.	Fort Wayne, Ind.	Concordia Lutheran
15	Selena Lozada ( <i>Lo-zaah-duh</i> )	6-2	F	Sr.	Perth Amboy, N.J.	Western Guilford / Guilford Technical CC
21	Isis Parker	6-0	F	So.	Cleveland, Ohio	Solon
22	Zaria Atkins	5-7	G	Fr.	Dudley, N.C.	Southern Wayne
23	Peyton Fallis ( <i>Fau-liss</i> )	5-10	G	So.	Indianapolis, Ind.	Heritage Christian
31	Rachel Rinehart	5-8	G	Sr.	Angola, Ind.	Angola

<b>Head Coach:</b> Niecee Nelson ( <i>KNEE-see</i> )
<b>Assistant Coaches:</b> Marcie Alberts, Carol Duncan and Ty Shaw
<b>Graduate Assistant Coach:</b> Haley Seibert ( <i>sigh-BERT</i> )

IUPUI JAGUARS ROSTER

No.	Name	Pos.	Ht.	Cl.	Hometown	High School / Previous School
3	Kelsi Byrd	G	5-9	Sr.	Crawfordsville, Ind.	North Montgomery
4	Holly Hoopingarner ( <i>hoop-in-GAR-ner</i> )	G	5-5	Fr.	Greenwood, Ind.	Greenwood
5	Taylor Drake	C	6-3	Fr.	Round Lake Heights, Ill.	Grant
11	Tanya Sims ( <i>tuh-MEE-uh</i> )	F	6-2	Jr.	Milwaukee, Wis.	Oak Creek / Bradley
12	Caitlyn Tolen ( <i>TOLL-en</i> )	G	5-10	Sr.	Otterbein, Ind.	Benton Central
14	Danielle Lawrence	G	5-9	Jr.	Louisville, Ky.	Butler
24	Anaiah Williams ( <i>uh-NYE-uh</i> )	F	6-2	Fr.	Cincinnati, Ohio	Fairfield
25	Daesjah Ely ( <i>DAY-shuh EE-lie</i> )	G	5-10	Fr.	Indianapolis, Ind.	Roncalli
32	Jenna Gunn	F	6-0	Jr.	Mason, Ohio	Mason
33	Mikale Rogers ( <i>MY-kale</i> )	C	6-2	Sr.	Indianapolis, Ind.	Lawrence North
35	Allex Brown	F	6-1	So.	Perrysburg, Ohio	Perrysburg
42	Sydney Hall	G	5-6	So.	Fishers, Ind.	Heritage Christian

<b>Head Coach:</b> Austin Parkinson
<b>Associate Head Coach:</b> Maria Marchesano ( <i>mar-keh-SAH-no</i> )
<b>Assistant Coaches:</b> Latrell Fleming ( <i>FLEH-ming</i> ) and Victoria Lipscomb

All-Time Results vs. IUPUI

2/1/1980	H	IUPUI	L, 52-60	Fort Wayne, Ind.
1/23/1981	A	IUPUI	L, 40-61	Indianapolis, Ind.
1/25/1982	H	IUPUI	L, 45-77	Fort Wayne, Ind.
12/23/1991	H	IUPUI	W, 110-70	Fort Wayne, Ind.
1/23/1992	A	IUPUI	W, 93-79	Indianapolis, Ind.
2/19/2002	A	IUPUI	L, 74-84	Indianapolis, Ind.
1/13/2003	H	IUPUI	L, 64-81	Fort Wayne, Ind.
12/23/2004	A	IUPUI	W, 70-69	Indianapolis, Ind.
12/8/2005	H	IUPUI	L, 50-59	Fort Wayne, Ind.
12/5/2006	A	IUPUI	W, 59-50	Indianapolis, Ind.
1/26/2008	A	IUPUI	W, 68-50	Indianapolis, Ind.
2/25/2008	H	IUPUI	L, 62-72 (OT)	Fort Wayne, Ind.
1/24/2009	H	IUPUI	L, 61-70	Fort Wayne, Ind.
2/23/2009	A	IUPUI	W, 61-56	Indianapolis, Ind.
3/8/2009	N	IUPUI	L, 59-61	Sioux Falls, S.D.
1/4/2010	H	IUPUI	W, 61-49	Fort Wayne, Ind.
1/30/2010	A	IUPUI	W, 66-49	Indianapolis, Ind.
1/8/2011	H	IUPUI	W, 72-55	Fort Wayne, Ind.
2/7/2011	A	IUPUI	W, 84-59	Indianapolis, Ind.
1/9/2012	H	IUPUI	W, 59-50	Fort Wayne, Ind.
2/4/2012	A	IUPUI	L, 62-76	Indianapolis, Ind.
12/28/2012	H	IUPUI	L, 74-79	Fort Wayne, Ind.
3/2/2013	A	IUPUI	L, 67-82	Indianapolis, Ind.
1/25/2014	A	IUPUI	L, 68-70	Indianapolis, Ind.
2/22/2014	H	IUPUI	W, 78-73	Fort Wayne, Ind.
1/4/2015	A	IUPUI	L, 68-78	Indianapolis, Ind.
2/11/2015	H	IUPUI	L, 68-78	Fort Wayne, Ind.
1/1/2016	H	IUPUI	L, 50-69	Fort Wayne, Ind.

Overall: 12-17  
League: 8-10  
Home: 5-9  
Away: 7-7  
Neutral: 0-1

ON THIS DATE...

JANUARY 28 (4-8)		
2016	OMAHA	L, 58-60
2012	SOUTH DAKOTA STATE	L, 66-76
2008	AT WESTERN ILLINOIS	W, 69-57
2006	LONGWOOD	L, 77-82
2002	CLEVELAND STATE	L, 65-99
1999	AT MISSOURI-ST. LOUIS	L, 86-101
1995	#3 SOUTHERN INDIANA	W, 104-94
1993	AT LEWIS	L, 55-65
1989	INDIANAPOLIS	W, 77-51
1988	AT KENTUCKY WESLEYAN	L, 70-75
1986	AT INDIANA TECH	L, 65-67
1978	AT SAINT FRANCIS (IN)	W, 46-40

ALL-TIME IN JANUARY...

BY DAY AND LOCATION	
Sunday	2-4
Monday	17-20
Tuesday	8-17
Wednesday	11-15
Thursday	37-48
Friday	2-12
Saturday	57-89
Home	83-93
Away	52-107
Neutral	0-4

ALL-TIME RECORD...

BY DAY OF THE WEEK	
Sunday	14-41
Monday	36-52
Tuesday	45-59
Wednesday	37-47
Thursday	104-124
Friday	32-52
Saturday	189-241

ALL-TIME RECORD...

BY MONTH	
November	60-84
December	110-141
January	135-203
February	139-161
March	17-29

Fort Wayne vs.

SUMMIT LEAGUE	All-Time	Under Nelson
Denver	3-5	0-1
IUPUI	12-17	0-0
North Dakota State	8-16	0-1
Omaha	5-4	1-0
Oral Roberts	5-12	0-2
South Dakota	3-9	0-1
South Dakota State	1-28	0-1
Western Illinois	10-10	0-1
TOTALS	47-104	1-7

# HEAD COACH NIECEE NELSON

Niecee Nelson was appointed as Fort Wayne's women's basketball head coach on April 18, 2016. An assistant coach at the University of San Diego for 11 seasons, she is the 14th head coach in the 40-year history of the program. Nelson is no stranger to Fort Wayne, however, having served as an assistant coach for the Mastodons for one season during 2004-05, after getting her start in coaching as a graduate assistant at the University of Wyoming for two seasons (2002-04).

Nelson helped lead San Diego to an overall record of 222-124 since 2005, including five consecutive 20-win seasons and postseason WNIT appearances. The Toreros, under the direction of head coach Cindy Fisher, made one NCAA Tournament appearance since '05, winning the WCC Tournament in 2008, and have made six overall appearances in the WNIT, first advancing to the event in 2007. USD was 25-8 in 2015-16, tying for the second-most wins in program history while advancing to the third round of the WNIT.

Nelson's on court responsibilities at USD included point guard and shooting guard development, while serving as the program's offensive coordinator. She has helped develop 13 All-WCC First Team guards, including Dominique Conners, a three-time honoree and USD's all-time leader in points and steals. Nelson also helped develop Amanda Rego, the program's only WCC Player of the Year (2006-07), who was the national assist leader that season, and is the school's career leader in assists.

Nelson's off court responsibilities at USD included serving as the program's academic coordinator, budget management and ordering of team equipment, including uniforms and apparel, as well as managing team travel. Additionally, she shared in the duties of recruiting as well as the opponent scouting and game strategy. Nelson has also assisted in creating practice plans and individual workouts.

Nelson was an assistant at Fort Wayne during 2004-05, with primary responsibilities in team travel, post player development, marketing and academic support. Within two months of arriving at Fort Wayne, she was promoted to recruiting coordinator, leading the charge in overseas recruiting into Brazil and Europe.

Prior to Fort Wayne, Nelson served as a graduate assistant at Wyoming with Coach Fisher. She worked closely with the staff and team on practice and game day coaching, individual workouts, academic support, film exchange, and guard and post development.

Nelson earned 2001 NAIA All-America honors at Concordia University in Portland, Oregon. A two-time team captain, she was named to the 2001 Lutheran Brotherhood All-America Team. Nelson was a two-time All-Cascade Conference First Team selection (2001, 2002), and the 1998 Cascade Conference Freshman of the Year.

Nelson graduated from Concordia in 2002 with a Bachelor of Arts degree in Education with an emphasis in Elementary Education, adding minors in Business Marketing and Psychology. She earned a Master of Science degree in Kinesiology and Health with an emphasis in Health Promotion from Wyoming in 2004.

Niecee and her husband, Steve, have two children: son Sebastian and daughter Skyler.

# FORT WAYNE IN SUMMIT LEAGUE AND NCAA STATISTICS

TEAM	(of 345)		(of 9)
	Statistic	NCAA	Summit
Assist Turnover Ratio	0.61	304	9
Assists	210	284	9
Assists Per Game	10	322	9
Blocked Shots	34	317	9
Blocked Shots Per Game	1.6	328	9
Fewest Fouls	402	315	9
Fewest Turnovers	347	280	9
Field-Goal Percentage	38.2	242	9
Field-Goal Percentage Defense	47.4	343	9
Free Throw Attempts	337	166	6
Free Throws Made	267	63	3
Free-Throw Percentage	79.2	6	2
Personal Fouls Per Game	19.1	257	9
Rebound Margin	-4.3	283	8
Rebounds	639	308	9
Rebounds Per Game	30.43	342	9
Scoring Defense	70.2	288	7
Scoring Margin	-12.7	318	9
Scoring Offense	57.6	300	9
Steals	140	212	4
Steals Per Game	6.7	263	4
Three Pt FG Defense	39.2	344	9
Three-Point Field Goals Made	70	320	9
Three-Point Field Goals Per Game	3.3	336	9
Three-Point Field-Goal Percentage	26.9	312	9
Turnover Margin	-1.52	247	7
Turnovers Forced	15	247	4
Turnovers Per Game	16.5	202	9

## INDIVIDUAL

	NCAA	Summit
<b>Free-Throw Percentage</b>		
De'Jour Young	88.7	1
Zaria Atkins	86.2	3
<b>Steals</b>		
Rachel Rinehart	38	4
<b>Steals Per Game</b>		
Rachel Rinehart	1.81	4
As 1/27/2017		
* NCAA rank does not include schools reclassifying		

Gates Center Attendance Records			
1.	1/19/2002	Toledo	1,827
2.	12/10/2006	Indiana	1,801
3.	11/19/2004	Bowling Green	1,438
4.	12/29/2013	Ball State	1,278
5.	1/24/2015	Denver	1,215
6.	1/13/1996	Southern Indiana	1,150
7.	12/6/2014	Northern Kentucky	1,147
8.	12/6/2012	Purdue	1,124
9.	11/12/2013	Indiana	1,085
10.	11/11/2016	Belmont	1,049

# Season and Career Totals

2016-17 Career

<b>DOUBLE-DOUBLES</b>		
KeShyra McCarver	-	1
De'Jour Young	1	1

<b>30-PLUS POINT GAMES</b>		
Rachel Rinehart	-	1

<b>20-PLUS POINT GAMES</b>		
Rachel Rinehart	1	5
KeShyra McCarver	-	3
Peyton Fallis	1	1
De'Jour Young	1	1

<b>DOUBLE-DIGIT SCORING GAMES</b>		
Rachel Rinehart	10	35
De'Jour Young	15	20
KeShyra McCarver	4	9
Zaria Atkins	9	9
Anna Lappenküper	6	6
Peyton Fallis	2	4
Selena Lozada	2	4
Lindley Kistler	1	1
Yuleska Ramirez-Tejeda	1	1

<b>10-PLUS REBOUND GAMES</b>		
De'Jour Young	1	2
KeShyra McCarver	-	1
Rachel Rinehart	1	1

<b>5-PLUS ASSIST GAMES</b>		
Rachel Rinehart	4	17
De'Jour Young	3	3
Anna Lappenküper	2	2
Zaria Atkins	2	2

<b>3-PLUS STEAL GAMES</b>		
Rachel Rinehart	5	13
De'Jour Young	2	6
KeShyra McCarver	1	4
Peyton Fallis	-	2
Zaria Atkins	2	1
Yuleska Ramirez-Tejeda	1	1
Anna Lappenküper	1	1

<b>3-PLUS THREE-POINT FG GAMES</b>		
KeShyra McCarver	-	3
Rachel Rinehart	1	3
Peyton Fallis	1	2
Lindley Kistler	1	1
Anna Lappenküper	1	1
Zaria Atkins	1	1

<b>STARTS</b>		
Rachel Rinehart	20	73
De'Jour Young	21	41
KeShyra McCarver	16	37
Selena Lozada	15	20
Anna Lappenküper	16	16
Zaria Atkins	15	15
Isis Parker	1	2
Peyton Fallis	1	2

<b>5-5-5 GAMES</b>		
At least 5 in three categories (pts, rbs, ast, stl or blk)		
Rachel Rinehart	2	6
De'Jour Young	3	3



## Single Game Stat Leaders

2016-17 Career

### TEAM LEADER IN POINTS

Rachel Rinehart	4	11
De'Jour Young	11	11
KeShyra McCarver	1	3
Zaria Atkins	3	3
Selena Lozada	1	1
Lindley Kistler	1	1
Peyton Fallis	1	1

### TEAM LEADER IN REBOUNDS

De'Jour Young	10	16
Rachel Rinehart	2	12
KeShyra McCarver	4	10
Selena Lozada	5	6
Isis Parker	1	2
Lindley Kistler	1	1
Zaria Atkins	1	1

### TEAM LEADER IN ASSISTS

Rachel Rinehart	11	35
De'Jour Young	5	9
Zaria Atkins	6	6
Anna Lappenküper	4	4
KeShyra McCarver	-	3
Peyton Fallis	2	2
Isis Parker	1	1

### TEAM LEADER IN STEALS

Rachel Rinehart	9	35
De'Jour Young	6	13
Zaria Atkins	6	6
KeShyra McCarver	5	5
Anna Lappenküper	4	4
Peyton Fallis	1	3
Selena Lozada	3	3
Yuleska Ramirez-Tejeda	2	2
Isis Parker	1	1
Nia Thomas	1	1

### TEAM LEADER IN BLOCKS

Selena Lozada	11	13
KeShyra McCarver	3	7
Isis Parker	5	7
De'Jour Young	2	6
Rachel Rinehart	1	3
Lindley Kistler	2	2
Anna Lappenküper	2	2
Peyton Fallis	-	1
Yuleska Ramirez-Tejeda	1	1

### POINTS OFF THE BENCH

Rachel Rinehart	1	8
KeShyra McCarver	1	7
Peyton Fallis	3	7
Isis Parker	4	5
Yuleska Ramirez-Tejeda	4	4
De'Jour Young	-	3
Anna Lappenküper	3	3
Selena Lozada	3	3
Lindley Kister	1	1
Zaria Atkins	1	1

## Miscellaneous Game Stats

### SCORES FIRST

Fort Wayne	5
Opponents	16

### HOW FORT WAYNE SCORED FIRST POINT

Free Throw	3
Jumper	6
Layup	11
Three-Pointer	1

### FIRST FORT WAYNE POINT SCORED BY

KeShyra McCarver	5
De'Jour Young	5
Anna Lappenküper	3
Rachel Rinehart	3
Peyton Fallis	2
Isis Parker	1
Selena Lozada	1
Zaria Atkins	1

### SCORING RUNS OF 10-0 OR BETTER

Fort Wayne	4
Opponents	17

### TIP-OFFS CONTROLLED

Fort Wayne	4
Opponents	17

Selena Lozada 1/15 (.067)

KeShyra McCarver 3/6 (.500)

### FORT WAYNE'S FIRST SUBSTITUTION

Isis Parker	11
Peyton Fallis	6
Anna Lappenküper	3
Yuleska Ramirez-Tejeda	3
Zaria Atkins	1
Lindley Kistler	1
Selena Lozada	1

### PLAYERS FOULED OUT

Fort Wayne	14
Opponents	6

Isis Parker	5
Rachel Rinehart	3
Anna Lappenküper	2
KeShyra McCarver	2
Selena Lozada	1
Peyton Fallis	1

### THREE- AND FOUR-POINT PLAYS

Fort Wayne	22
Opponents	18

Rachel Rinehart	8	27
KeShyra McCarver	2	12
De'Jour Young	3	6
Zaria Atkins	3	3
Selena Lozada	3	3
Peyton Fallis	1	2
Isis Parker	1	2
Yuleska Ramirez-Tejeda	1	1

### BENCH POINTS

Fort Wayne	317 (15.1 ppg.)
Opponents	403 (19.2 ppg.)

### LARGEST HALFTIME LEAD

12 (35-23) vs Defiance (11/12/16)

### LARGEST HALFTIME DEFICIT

28 (45-17) vs Miami (Ohio) (12/19/16)

### LARGEST WIN

18 (76-58) vs Defiance (11/12/16)

### LARGEST DEFEAT

28 (87-59) at South Dakota (1/18/17)

### LARGEST LEAD

19 (42-23, 7:06, 3rd) vs Defiance (11/12/16)

### LARGEST DEFICIT

34 (44-10, 2:43, 2nd) vs Miami (Ohio) (12/19/16)

### LARGEST DEFICIT OVERCOME TO WIN

8 (34-26, 3:47, 2nd) vs Eastern Kentucky (12/21/16)

### LARGEST LEAD GIVEN UP IN LOSS

10 (2 times)

MR - (27-17, 7:07, 2nd) vs. Oakland (11/19/16)

### MOST CONSECUTIVE POINTS

11 (3 times)

MR - (6:07 - 2:34 1st) at South Dakota State (11/5/17)

### MOST CONSECUTIVE POINTS BY OPP.

19 (2:28 1st - 5:32 2nd) vs Miami (Ohio) (12/19/16)

### LONGEST WINNING STREAK

-

### LONGEST LOSING STREAK

7 (2 times)

MR - (12/28/16-1/21/17)

### LARGEST HOME CROWD

1,789 vs Coastal Carolina (11/26/16)

### LARGEST ROAD CROWD

1,611 at South Dakota (1/18/17)

### MOST TIME LEADING

36:48 vs Defiance (11/12/16)

### MOST TIME LEADING IN LOSS

19:41 vs Denver (1/12/17)

### MOST TIME WITH SCORE TIED

9:07 vs. Omaha (1/25/17)

### MOST TIME TRAILING

39:50 at Oral Roberts (12/31/16)

### MOST LEAD CHANGES

10 vs Trine (11/14/16)

### MOST TIE SCORES

12 vs. Omaha (1/25/17)

## STARTING LINEUPS

Game	G	G	G	G/F	F
Indiana Tech (Ex)	Lappenküper	Young	Rinehart	Parker	Lozada
Belmont	Lappenküper	Young	Rinehart	Parker	Lozada
Defiance	Lappenküper	Young	Rinehart	McCarver	Lozada
Trine	Lappenküper	Young	Rinehart	McCarver	Lozada
at Butler	Lappenküper	Young	Rinehart	McCarver	Lozada
Oakland	Lappenküper	Young	Rinehart	Fallis	McCarver
Coastal Carolina	Lappenküper	Young	Rinehart	McCarver	Lozada
at Kent State	Lappenküper	Young	Atkins	McCarver	Lozada
at Illinois	Atkins	Young	Rinehart	McCarver	Lozada
at Western Michigan	Atkins	Young	Rinehart	McCarver	Lozada
at UIC	Atkins	Young	Rinehart	McCarver	Lozada
vs. Miami (Ohio)	Atkins	Young	Rinehart	McCarver	Lozada
at Wright State	Atkins	Young	Rinehart	Lappenküper	McCarver
vs. Eastern Kentucky	Atkins	Young	Rinehart	McCarver	Lozada
Western Illinois	Atkins	Young	Rinehart	Lappenküper	McCarver
at Oral Roberts	Atkins	Young	Rinehart	Lappenküper	McCarver
at South Dakota State	Atkins	Young	Rinehart	Lappenküper	McCarver
at North Dakota State	Atkins	Young	Rinehart	Lappenküper	McCarver
Denver	Atkins	Young	Rinehart	Lappenküper	Lozada
at South Dakota	Atkins	Young	Rinehart	Lappenküper	Lozada
Oral Roberts	Atkins	Young	Rinehart	Lappenküper	Lozada
Omaha	Atkins	Young	Rinehart	Lappenküper	Lozada
IUPUI (Pink Out)					
at Denver					
South Dakota					
North Dakota State					
at Omaha					
South Dakota State					
at Western Illinois					
at IUPUI					
<b>BY ROTATION</b>					
0-1	Lappenküper	Young	Rinehart	Parker	Lozada
1-3	Lappenküper	Young	Rinehart	McCarver	Lozada
0-1	Lappenküper	Young	Rinehart	Fallis	McCarver
0-1	Lappenküper	Young	Atkins	McCarver	Lozada
2-3	Atkins	Young	Rinehart	McCarver	Lozada
0-5	Atkins	Young	Rinehart	Lappenküper	McCarver
1-3	Atkins	Young	Rinehart	Lappenküper	Lozada

## Fort Wayne vs.

16-17 OPPONENTS	All-Time	Under Nelson
Belmont	0-3	0-1
Butler	4-6	0-1
Coastal Carolina	2-2	0-1
Defiance	1-1	1-0
Denver	3-5	0-1
Eastern Kentucky	1-1	1-0
Illinois	0-5	0-1
IUPUI	12-17	0-0
Kent State	1-1	0-1
Miami (Ohio)	1-2	0-1
North Dakota State	8-16	0-1
Oakland	8-16	0-1
Omaha	5-4	1-0
Oral Roberts	5-12	0-2
South Dakota	3-9	0-1
South Dakota State	1-28	0-1
Trine	16-5	0-1
UIC	1-3	1-0
Western Illinois	10-10	0-1
Western Michigan	1-4	0-1
Wright State	5-8	0-1
<b>TOTALS</b>	<b>88-158</b>	<b>4-17</b>

## WHY MASTODONS?...

It all started about 10,000 years ago...

That's when mastodons roamed the southern Great Lakes region of North America. These stocky versions of modern elephants reached heights of about ten feet at the shoulder, with tusks that curved upward that were six feet or more in length. Mastodons were browsers who fed mostly on leaves and twigs from small trees and shrubs.

One such mastodon found its final resting place about two miles south of Angola, Indiana, on land that would eventually become part of Orsie Routsong's farm. In the fall of 1968, Routsong decided to expand a small pond on his property. An excavator was hired and instructed to pile the excavated material around the edge of the pond. Several days after the excavation was finished a heavy rain storm pounded the piles of dirt.

The next day, a young neighbor boy of Routsong's discovered a large bone in one of the dirt piles. Routsong knew it was something out of the ordinary, so he called Jack Sunderman, chair of the IPFW Geology Department, to identify the bone, and to ask for advice on what to do with it. Sunderman says his first question was, "How big is the bone," with Routsong's answer being "pretty big, maybe 3 or 4 feet long."

When Sunderman got to the farm, he identified the bone as a leg bone of a mastodon. He told Routsong a skeleton like this would have scientific and instructional value if a large portion of it could be located. Routsong agreed, and also agreed to have the IPFW Geology Department do the excavation. Sunderman got two more faculty members, Geoffrey Matthews and Bernd Erdtmann, and several geology students to help in the project.

After all the mastodon bones were collected, cleaned, and preserved, Routsong agreed to have the adult mastodon skeleton placed on permanent display at IPFW; the skull of a nearby baby mastodon is now on loan to Science Central.

In the spring of 1970, The Communicator (IPFW's student newspaper) began a drive to come up with a mascot for IPFW. Some of the suggested choices included the Boiler-Hoosiers, Warhawks, Marauders, Frontiersmen, Pioneers, Elfs, and Hobbits. Those names and others came from student suggestions. Steve Pettyjohn, who served as the student body president in 1968-69, wrote a letter to the editor about the school mascot. In his letter, Pettyjohn extolled the virtues of choosing the mastodon as IPFW's mascot: "It sounds different, strange - that's exactly why. It's different and yes, even strange. For God's Sakes, let's have the courage to be a little different."

In the meantime, former Indiana Congressman Mark Souder, who served as student body president in 1969-70, recalls being lobbied by the Geology Club to choose the mastodon.

According to Nusbaumer, "Souder appointed a committee in student government to select a name although he was lobbying hard for the mastodon." After some discussion on the subject, Souder says a vote was taken by the committee and the mastodon came out the winner. Souder finished his recollection with these thoughts. "History shows that the advocacy of the geology club was correct. The fast, decisive action of the elected student government—though it did not please everyone and was not a precedent that the University desired to see—has also been upheld by history as IPFW regularly scores high in any list of unique university nicknames; even in this era when everybody strives to be different. We did it decades ago."

## WHAT IS A MASTODON?...

### (ACCORDING TO WIKIPEDIA)

Mastodons are any species of extinct proboscideans (mammals with tusks and long, muscular trunks) in the genus Mammut, distantly related to elephants, that inhabited North and Central America during the late Miocene or late Pliocene up to their extinction at the end of the Pleistocene 10,000 to 11,000 years ago. Mastodons lived in herds and were predominantly forest dwelling animals that fed on a mixed diet of browsing and grazing with a seasonal preference for browsing, in contrast to living elephants that are mostly grazing animals.

Modern reconstructions based on partial and skeletal remains reveal that mastodons were very similar in appearance to elephants and, to a lesser degree, mammoths, though not closely related to either one. Compared to mammoths, mastodons had shorter legs, a longer body and were more heavily muscled, a build similar to that of the current Asian elephants. The average body size of the species was around 2.3 m (7 ft 7 in) in height at the shoulders, corresponding to a large female or a small male, but large males could grow up to 2.8 m (9 ft 2 in) in height and weigh as much as 4.5 tonnes (5 short tons).

IPFW WHEN...	2016-17	NELSON
Overall	4-17	4-17
Home	2-7	2-7
Road	1-9	1-9
Neutral	1-1	1-1
At Memorial Coliseum	0-2	0-2
Summit League	1-7	1-7
Summit League Home	1-3	1-3
Summit League Road	0-4	0-4
Non-League	3-10	3-10
Non-League Home	1-4	1-4
Non-League Road	1-5	1-5
Following a win	0-3	0-3
Following a loss	4-13	4-13
Against top 25 (AP) teams	0-0	0-0
Against Mid-Major top 25 teams	0-1	0-1
In Overtime	0-0	0-0
In Multiple Overtimes	0-0	0-0
Regular Season Tournaments	1-2	1-2
Postseason	0-0	0-0
Wins Tip	1-3	1-3
Scores First	1-4	1-4
Leads after 1st quarter	2-4	2-4
Trails after 1st quarter	2-13	2-13
Tied after 1st quarter	0-0	0-0
Leads at half	3-3	3-3
Trails at half	1-13	1-13
Tied at half	0-1	0-1
Leading with 5:00 left	3-0	3-0
Trailing with 5:00 left	1-17	1-17
Tied with 5:00 left	0-0	0-0
Shoots 50% or better	0-0	0-0
Shoots less than 50%	5-16	5-16
Opponent shoots ≥ 50%	0-6	0-6
Opponent shoots < 50%	4-11	4-11
Shoots better than opp.	3-1	3-1
Shoots worse than opp.	1-16	1-16
Makes 5+ 3-Pt. shots	3-5	3-5
Makes 9+ 3-Pt. shots	0-0	0-0
More 3-Pt. made than opp.	3-5	3-5
Has equal 3-Pt. made	0-0	0-0
Fewer 3-Pt. made than opp.	1-12	1-12
Shoots 3-Pt. better than opp.	3-3	3-3
Shoots 3-Pt. worse than opp.	1-14	1-14
Shoots 3-Pt. 35% or better	3-5	3-5
Shoots 3-Pt. less than 35%	1-11	1-11
Opp. Shoots 3-Pt. 35% or better	0-16	0-16
Opp. Shoots 3-Pt. less than 35%	4-1	4-1
More FTs made than opp.	4-7	4-7
Has equal FTs made	0-1	0-1
Fewer FTs made than opp.	0-9	0-9
Out-rebounds opp.	3-5	3-5
Has equal rebounds	0-1	0-1
Is out-rebounded	1-11	1-11
More turnovers than opp.	2-11	2-11
Has equal turnovers as opp.	0-0	0-0
Fewer turnovers than opp.	2-6	2-6
More assists than opp.	1-2	1-2
Has equal assists	2-0	2-0
Fewer assists than opp.	1-15	1-15
More blocks than opp.	0-2	0-2
Has equal blocks	0-1	0-1
Fewer blocks than opp.	4-14	4-14
More steals than opp.	3-4	3-4
Has equal steals	0-0	0-0
Fewer steals than opp.	1-13	1-13
More fouls than opp.	1-12	1-12
Has equal fouls	0-0	0-0
Fewer fouls than opp.	3-5	3-5

Plays in the state of Indiana	2-8	2-8
Plays outside Indiana	2-9	2-9
Plays in Eastern Time Zone	3-12	3-12
Plays in Central Time Zone	1-5	1-5
Playe in Mountain Time Zone	0-0	0-0
Plays in Pacific Time Zone	0-0	0-0
Plays during the day	2-9	2-9
Plays at night (5pm or later)	2-8	2-8
Plays in November	1-6	1-6
Plays in December	2-6	2-6
Plays in January	1-5	1-5
Plays in February	0-0	0-0
Plays in March	0-0	0-0
Plays on Sunday	0-0	0-0
Plays on Monday	0-2	0-2
Plays on Tuesday	0-2	0-2
Plays on Wednesday	2-4	2-4
Plays on Thursday	0-2	0-2
Plays on Friday	0-2	0-2
Plays on Saturday	2-5	2-5
Attendance is ≤ 999	4-11	4-11
Attendance is ≥ 1,000	0-6	0-6
Margin is 1 point	0-0	0-0
Margin is between 2-5	1-0	1-0
Margin is between 6-10	2-3	2-3
Margin is between 11-20	1-5	1-5
Margin is more than 20	0-8	0-8
Scores ≤ 49 pts.	0-3	0-3
Scores 50-59 pts.	0-10	0-10
Scores 60-69 pts.	3-2	3-2
Scores 70-79 pts.	1-2	1-2
Scores 80-89 pts.	0-0	0-0
Scores 90-99 pts.	0-0	0-0
Scores 100+ pts.	0-0	0-0
Opponent Scores ≤ 49 pts.	0-0	0-0
Opponent scores 50-59 pts.	3-1	3-1
Opponent scores 60-69 pts.	1-5	1-5
Opponent scores 70-79 pts.	0-6	0-6
Opponent scores 80-89 pts.	0-5	0-5
Opponent scores 90-99 pts.	0-0	0-0
Opponent scores 100+ pts.	0-0	0-0
Force 20 or more turnovers	1-3	1-3
Make 10 or more steals	2-3	2-3
1 or more 20+ point scorer	0-4	0-4
No 20+ point scorer	4-13	4-13
≤ 2 players score 10+ pts.	2-10	2-10
3 players score 10+ pts.	0-6	0-6
4+ players score 10+ pts.	2-1	2-1
≥ 1 player with 10+ reb.	0-2	0-2
≥ 1 player with double-double	0-1	0-1
≥ 1 player with 5+ 3-Pt. made	0-0	0-0
No player with 5+ 3-Pt. made	4-17	4-17
No IPFW player fouls out	1-8	1-8
1+ IPFW player fouls out	3-9	3-9
More bench points	2-5	2-5
Has equal bench points	0-0	0-0
Fewer bench points	2-12	2-12
More points in the paint	2-2	2-2
Has equal points in the paint	0-1	0-1
Fewer points in the paint	2-14	2-14
More points off turnovers	2-4	2-4
Has equal points off turnovers	0-1	0-1
Fewer points off turnovers	2-12	2-12
More 2nd chance points	3-8	3-8
Has equal 2nd chance points	0-1	0-1
Fewer 2nd chance points	1-8	1-8
More fast break points	1-1	1-1
Has equal fast break points	0-4	0-4
Fewer fast break points	3-12	3-12

## BUSY MASTODONS...

The Mastodons wrapped up a busy opening weekend as the team played three games in four days to begin the season. Fort Wayne was the only team in Division I to have played three games through the first four days of the season (Nov. 11-14).

## MAKING THE ROUNDS...

Of the current 32 Division I basketball conferences, Fort Wayne has taken on at least one school, currently or when they played, in all but four of those leagues. The four remaining conferences the Mastodons have yet to play are: Colonial Athletic Association, Ivy League, Southwestern Athletic Conference, and West Coast Conference. Three other leagues (Big Sky Conference, Pacific 12 Conference, and Southland Conference) Fort Wayne played a current member while they were a part of another conference.

## SEASON OPENERS...

The Fort Wayne women's basketball team has an all-time record of 16-25 in its season openers, after falling to Belmont on Nov. 11.

## SUMMIT LEAGUE PRESEASON POLL...

Fort Wayne was picked to finish ninth in the Summit League preseason poll of the league's head coaches. The Mastodons received 80 points as coaches were not allowed to vote for their own teams.

South Dakota State was tabbed as the preseason favorite to win the 2016-17 Summit League Championship, receiving 30 first-place votes to finish atop the poll with 542 points.

### 2016-17 Summit League Preseason Poll

Place	Team	Points (1st)
1.	South Dakota State	542 (30)
2.	IUPUI	438
3.	South Dakota	393 (3)
4.	Oral Roberts	391 (1)
5.	Omaha	325
6.	Western Illinois	250
7.	North Dakota State	156
8.	Denver	150
9.	Fort Wayne	80

### Preseason Player of the Year:

Macy Miller, South Dakota State

### First Team

Name	School	Pos.	Year
Danielle Lawrence	IUPUI	G	Jr.
Macy Miller	South Dakota State	G	Jr.
Clarissa Ober	South Dakota State	C	Sr.
Mikale Rogers	IUPUI	C	Sr.
Mikaela Shaw	Omaha	F	Sr.
Ellie Thompson	South Dakota State	F	Jr.

### Second Team

Name	School	Pos.	Year
Madison Guebert	South Dakota State	G	So.
Faith Ihim	Oral Roberts	F	Jr.
Kaylan Mayberry	Oral Roberts	G	Sr.
Taylor Thunstedt	North Dakota State	G	Jr.
Kerri Young	South Dakota State	G/F	Sr.



## FORT WAYNE INDIVIDUAL GAME HIGHS

Points	22	Peyton Fallis at Butler (11/16/16)
Field Goals Made	10	Rachel Rinehart vs Oral Roberts (01/21/17)
Field Goal Att.	18	De'Jour Young vs Western Illinois (12/28/16)
FG Pct (min 5 made)	.833 (5-6)	Rachel Rinehart at Kent State (11/30/16)
	.833 (5-6)	Lindley Kistler vs Defiance (11/12/16)
3-Point FG Made	4	Peyton Fallis at Butler (11/16/16)
3-Point FG Att.	10	Anna Lappenkuper at South Dakota State (01/05/17)
3-Pt FG Pct (min 2 made)	1.000 (2-2)	Zaria Atkins vs Denver (01/12/17)
	1.000 (2-2)	Zaria Atkins at Kent State (11/30/16)
	1.000 (2-2)	KeShyra McCarver vs Belmont (11/11/16)
Free Throws Made	9	Zaria Atkins vs Eastern Kentucky (12/21/16)
Free Throw Att.	11	Rachel Rinehart at UIC (12/10/16)
FT Pct (min 7 made)	1.000 (9-9)	Zaria Atkins vs Eastern Kentucky (12/21/16)
Rebounds	11	De'Jour Young vs Denver (01/12/17)
Assists	6	Zaria Atkins vs Omaha (01/25/17)
	6	Rachel Rinehart vs Trine (11/14/16)
Steals	6	Rachel Rinehart vs Oral Roberts (01/21/17)
Blocked Shots	3	Selena Lozada vs Western Illinois (12/28/16)
Turnovers	7	Anna Lappenkuper vs Western Illinois (12/28/16)

## FORT WAYNE TEAM GAME HIGHS

POINTS	76	DEFIANCE (11/12/16)
FIELD GOALS MADE	30	DEFIANCE (11/12/16)
FIELD GOAL ATTEMPTS	66	at South Dakota State (01/05/17)
	66	BELMONT (11/11/16)
FIELD GOAL PERCENTAGE	.486 (18-37)	at Wright State (12/20/16)
3 PT FIELD GOALS MADE	6	at Butler (11/16/16)
3 PT FG ATTEMPTS	20	DEFIANCE (11/12/16)
	20	at South Dakota State (01/05/17)
3 PT FG PERCENTAGE	.600 (6-10)	TRINE (11/14/16)
FREE THROWS MADE	25	DEFIANCE (11/12/16)
FREE THROW ATTEMPTS	28	vs Eastern Kentucky (12/21/16)
FREE THROW PERCENTAGE	.944 (17-18)	vs Eastern Kentucky (12/21/16)
	.944 (17-18)	at South Dakota (01/18/17)
REBOUNDS	40	at Oral Roberts (12/31/16)
	40	DENVER (01/12/17)
ASSISTS	17	DEFIANCE (11/12/16)
	17	DEFIANCE (11/12/16)
STEALS	12	at North Dakota State (01/07/17)
	12	OAKLAND (11/19/16)
BLOCKED SHOTS	4	WESTERN ILLINOIS (12/28/16)
	4	TRINE (11/14/16)
TURNOVERS	25	OAKLAND (11/19/16)
FOULS	31	at Kent State (11/30/16)

## FORT WAYNE TEAM GAME LOWS

POINTS	33	at Illinois (12/02/16)
FIELD GOALS MADE	10	at Illinois (12/02/16)
FIELD GOAL ATTEMPTS	37	at Wright State (12/20/16)
FIELD GOAL PERCENTAGE	.232 (13-56)	at Western Michigan (12/06/16)
3 PT FIELD GOALS MADE	0	at Western Michigan (12/06/16)
3 PT FG ATTEMPTS	4	at Oral Roberts (12/31/16)
3 PT FG PERCENTAGE	.000 (0-13)	at Western Michigan (12/06/16)
FREE THROWS MADE	4	WESTERN ILLINOIS (12/28/16)
FREE THROW ATTEMPTS	5	WESTERN ILLINOIS (12/28/16)
FREE THROW PERCENTAGE	.588 (10-17)	DEFIANCE (11/12/16)
REBOUNDS	22	OMAHA (01/25/17)
ASSISTS	4	at Illinois (12/02/16)
	4	at Western Michigan (12/06/16)
	4	at Oral Roberts (12/31/16)
STEALS	0	DENVER (01/12/17)
BLOCKED SHOTS	0	OAKLAND (11/19/16)
	0	vs Miami (Ohio) (12/19/16)
	0	vs Eastern Kentucky (12/21/16)
	0	ORAL ROBERTS (01/21/17)
TURNOVERS	9	at South Dakota State (01/05/17)
	9	at North Dakota State (01/07/17)
	9	OMAHA (01/25/17)
FOULS	12	vs Eastern Kentucky (12/21/16)

## OPPONENT INDIVIDUAL GAME HIGHS

Points	31	Kelsey Tietje vs Defiance (11/12/16)
Field Goals Made	13	Kelsey Tietje vs Defiance (11/12/16)
Field Goal Att.	22	Kelsey Tietje vs Defiance (11/12/16)
FG Pct (min 5 made)	1.000 (8-8)	Ellie Thompson at South Dakota State (01/05/17)
3-Point FG Made	8	Lauren Loven vs Denver (01/12/17)
3-Point FG Att.	11	Lauren Loven vs Denver (01/12/17)
3-Pt FG Pct (min 2 made)	1.000 (3-3)	Kaylan Mayberry at Oral Roberts (12/31/16)
Free Throws Made	10	Maria Martiane vs Oral Roberts (01/21/17)
Free Throw Att.	11	Briana Johnson vs Denver (01/12/17)
	11	Larissa Lurken at Kent State (11/30/16)
FT Pct (min 7 made)	1.000 (10-10)	Maria Martiane vs Oral Roberts (01/21/17)
Rebounds	14	Hannah Little vs Oakland (11/19/16)
Assists	11	Whitney Schalk vs Defiance (11/12/16)
Steals	6	Taylor Gleason vs Oakland (11/19/16)
Blocked Shots	5	Marley Hill at Western Michigan (12/06/16)
Turnovers	9	Larissa Lurken at Kent State (11/30/16)

## OPPONENT TEAM GAME HIGHS

POINTS	87	at South Dakota (01/18/17)
FIELD GOALS MADE	34	at South Dakota (01/18/17)
FIELD GOAL ATTEMPTS	63	BELMONT (11/11/16)
FIELD GOAL PERCENTAGE	.563 (27-48)	at South Dakota State (01/05/17)
3 PT FIELD GOALS MADE	10	at Oral Roberts (12/31/16)
3 PT FG ATTEMPTS	10	BELMONT (11/11/16)
3 PT FG PERCENTAGE	.26	BELMONT (11/11/16)
FREE THROWS MADE	.714 (10-14)	at Oral Roberts (12/31/16)
FREE THROW ATTEMPTS	25	TRINE (11/14/16)
FREE THROW PERCENTAGE	35	TRINE (11/14/16)
REBOUNDS	.900 (9-10)	at Wright State (12/20/16)
	45	at North Dakota State (01/07/17)
	45	BELMONT (11/11/16)
ASSISTS	18	at North Dakota State (01/07/17)
	18	WESTERN ILLINOIS (12/28/16)
STEALS	15	OAKLAND (11/19/16)
BLOCKED SHOTS	8	at Western Michigan (12/06/16)
	8	OAKLAND (11/19/16)
TURNOVERS	22	at North Dakota State (01/07/17)
FOULS	27	at UIC (12/10/16)

## OPPONENT TEAM GAME LOWS

POINTS	55	at UIC (12/10/16)
FIELD GOALS MADE	20	at UIC (12/10/16)
FIELD GOAL ATTEMPTS	48	at Kent State (11/30/16)
	48	at South Dakota State (01/05/17)
FIELD GOAL PERCENTAGE	.367 (22-60)	at Illinois (12/02/16)
3 PT FIELD GOALS MADE	2	COASTAL CAROLINA (11/26/16)
3 PT FG ATTEMPTS	2	at South Dakota State (01/05/17)
3 PT FG PERCENTAGE	.231 (3-13)	COASTAL CAROLINA (11/26/16)
FREE THROWS MADE	5	vs Eastern Kentucky (12/21/16)
FREE THROW ATTEMPTS	5	at Illinois (12/02/16)
FREE THROW PERCENTAGE	.9	WESTERN ILLINOIS (12/28/16)
REBOUNDS	.500 (5-10)	at Illinois (12/02/16)
	26	at Wright State (12/20/16)
ASSISTS	10	TRINE (11/14/16)
	10	at South Dakota State (01/05/17)
STEALS	3	at South Dakota State (01/05/17)
	3	at North Dakota State (01/07/17)
	3	DENVER (01/12/17)
BLOCKED SHOTS	0	COASTAL CAROLINA (11/26/16)
TURNOVERS	8	at Illinois (12/02/16)
	8	DENVER (01/12/17)
FOULS	11	BELMONT (11/11/16)

## FORT WAYNE TEAM RECORDS (MIN. 20 GAMES)

Record	
MOST WINS.....	23 (1995-96)
MOST LOSSES.....	24 (1998-99)
MOST GAMES PLAYED.....	31 (2010-11)
Points	
GAME HIGH.....	117, vs Tri-State (12/3/88)
SEASON HIGH.....	2,431 (1989-90)
GAME LOW.....	28, Indiana State (12/28/02)
SEASON LOW.....	1,110 (1978-79)
Field Goals Made	
GAME HIGH.....	48, at Southern Indiana (2/7/91)
SEASON HIGH.....	901 (1989-90)
GAME LOW.....	11, Wichita State (11/8/2013)
	11, Winthrop (12/23/05)
SEASON LOW.....	443 (1978-79)
Field Goal Attempts	
GAME HIGH.....	92, at Purdue (11/21/04)
SEASON HIGH.....	1,864 (2007-08)
GAME LOW.....	38, Wichita State (11/8/13)
SEASON LOW.....	1,263 (1978-79)
Field Goal Percentage	
GAME HIGH.....	.720 (36-of-50), at IUPUI (1/23/92)
SEASON HIGH.....	.492 (877-1782), (1991-92)
GAME LOW.....	.163 (15-of-92), Purdue (11/21/04)
LOW SEASON.....	.331 (595-1798), (2004-05)
3-Point Field Goals Made	
GAME HIGH.....	18, at Missouri-St. Louis (2/15/01)
SEASON HIGH.....	271 (2013-14)
GAME LOW.....	0, Several times
SEASON LOW.....	13 (1992-93)

3-Point Field Goal Attempts	
GAME HIGH.....	48, vs Bowling Green (11/19/04)
	48, vs Grace (12/11/99)
SEASON HIGH.....	743 (2013-14)
GAME LOW.....	0, Several times
SEASON LOW.....	59 (1992-93)
3-Point Field Goal Percentage (min. 10 att.)	
GAME HIGH.....	.800 (8-of-10), at Cleveland State (1/26/04)
SEASON HIGH.....	.430 (89-207), (1989-90)
GAME LOW.....	.000 (0-of-10), St. Joseph's (1/3/91)
LOW SEASON.....	.220 (44-200), (1997-98)
Free Throws Made	
GAME HIGH.....	42, vs NKU (12/21/95)
SEASON HIGH.....	604 (1995-96)
GAME LOW.....	1, Indianapolis (2/20/97)
	1, Indianapolis (3/6/1993)
SEASON LOW.....	214 (1979-80)
Free Throw Attempts	
GAME HIGH.....	52, vs NKU (12/21/95)
	52, at Wayne State (11/16/90)
SEASON HIGH.....	821 (1991-92)
GAME LOW.....	2, Ashland (2/20/88)
SEASON LOW.....	382 (1982-83)
Free Throw Percentage (min. 10 made/20 att.)	
GAME HIGH.....	1.000 (24-of-24), vs Indiana (11/12/13)
SEASON HIGH.....	.794 (409-515), (2012-13)
GAME LOW.....	.433 (13-of-30), Kentucky (11/21/03)
SEASON LOW.....	.483 (224-464), (1978-79)

Rebounds	
GAME HIGH.....	65, vs Shippensburg (11/19/95)
SEASON HIGH.....	1,244 (1991-92)
GAME LOW.....	18, IUPUI (3/2/13)
SEASON LOW.....	132 (1978-79)
Assists	
GAME HIGH.....	31, at Southern Indiana (2/7/91)
SEASON HIGH.....	551 (1994-95)
GAME LOW.....	1, Wichita State (11/8/13)
	1, Hampton (11/29/86)
SEASON LOW.....	125 (1980-81)
Blocks	
GAME HIGH.....	11, vs Indiana Tech (11/23/10)
	11, vs Kalamazoo (12/2/05)
SEASON HIGH.....	119 (2009-10)
GAME LOW.....	0, Several times
SEASON LOW.....	18 (1986-87)
Steals	
GAME HIGH.....	25, vs Kalamazoo (12/2/05)
SEASON HIGH.....	315 (1990-91)
GAME LOW.....	0, St. Bonaventure (12/2/08)
	0, UMBC (12/20/05)
SEASON LOW.....	188 (2008-09)
Turnovers	
GAME HIGH.....	40, Hampton (12/4/87)
SEASON HIGH.....	655 (1989-99)
GAME LOW.....	.5, North Dakota State (1/5/09)
SEASON LOW.....	184 (1980-81)



## FORT WAYNE INDIVIDUAL QUARTER HIGHS

Points	13	De'Jour Young, 2nd, at UIC (12/10/16)
FG Made	5	De'Jour Young, 2nd, at UIC (12/10/16)
FG Att.	7 (5x)	MR - De'Jour Young, 1st, at South Dakota (1/18/17)
3-Pt FG Made	2 (6x)	MR - Anna Lappenüper, 1st, at South Dakota (1/18/17)
3-P FG Att.	4	Anna Lappenüper, 3rd, at South Dakota State (1/5/17)
FT Made	6	De'Jour Young, 4th, vs Oakland (11/19/16)
FT Att.	8	De'Jour Young, 4th, vs Oakland (11/19/16)
Rebounds	6	De'Jour Young, 3rd, vs Denver (1/12/17)
Offensive Rebounds	4	De'Jour Young, 3rd, vs Denver (1/12/17)
Defensive Rebounds	5	De'Jour Young, 2nd, at UIC (12/10/16)
Fouls	3 (11x)	MR - Selena Lozada, 4th, vs Omaha (1/25/17)
Assists	3 (8x)	MR - Zaria Atkins, 3rd, vs Omaha (1/25/17)
Blocked Shots	2 (3x)	MR - Selena Lozada, 2nd, vs Western Illinois (12/28/16)
Steals	4	Rachel Rinehart, 4th, at South Dakota State (1/5/17)

## FORT WAYNE TEAM QUARTER HIGHS

Points	25	3rd, vs Defiance (11/12/16)
1st Quarter Points	21	vs Oakland (11/19/16)
2nd Quarter Points	21	at UIC (12/10/16)
3rd Quarter Points	25	vs Defiance (11/12/16)
4th Quarter Points	25	vs Denver (1/12/17)
Fewest Points	5 (2x)	MR - 1st, at Illinois (12/2/16)
FG Made	10 (3x)	MR - 4th, vs Oral Roberts (1/21/17)
FG Att.	21	4th, at South Dakota State (1/5/17)
Highest FG Pct.	.667 (6-9)	3rd, at Wright State (12/20/16)
Lowest FG Pct.	.071 (1-14)	3rd, vs Denver (1/12/17)
3-Pt FG Made	3 (5x)	MR - 2nd, vs Denver (1/12/17)
3-Pt FG Att.	8 (2x)	MR - 3rd, at South Dakota State (1/5/17)
3-Pt FG Pct. (2 made)	1.000 (2-2)	2nd, vs Defiance (11/12/16)
FT Made	13	4th, vs. Eastern Kentucky (12/21/16)
FT Att.	15	4th, vs. Eastern Kentucky (12/21/16)
FT Pct (5 made)	1.000 (9-9)	4th, vs Trine (11/14/16)
Rebounds	15	3rd, vs Denver (1/12/17)
Offensive Rebounds	9	3rd, vs Denver (1/12/17)
Defensive Rebounds	10	2nd, at UIC (12/10/16)
Fouls	11	3rd, vs Coastal Carolina (11/26/16)
Assists	6 (2x)	2nd, at UIC (12/10/16)
Turnovers	10	2nd, vs Oakland, (11/19/16)
Blocked Shots	3	2nd, vs Trine (11/14/16)
Steals	6 (2x)	MR - 1st, vs Omaha (1/25/17)

## OPPONENT INDIVIDUAL QUARTER HIGHS

Points	16	Larissa Lurken, 1st, at Kent State (11/30/16)
FG Made	6 (2x)	MR - Larissa Lurken, 1st, at Kent State (11/30/16)
FG Att.	8 (4x)	MR - Mikaela Shaw, 4th, vs Omaha (1/25/17)
3-Pt FG Made	3	Lauren Loven, 4th, vs Denver (1/12/17)
3-P FG Att.	4 (4x)	MR - Lauren Loven, 3rd, vs Denver (1/12/17)
FT Made	6	Maria Martiane, 4th, vs Oral Roberts (1/21/17)
FT Att.	6 (2x)	MR - Maria Martiane, 4th, vs Oral Roberts (1/21/17)
Rebounds	7	Hannah Little, 4th, vs Oakland (11/19/16)
Offensive Rebounds	3 (7x)	MR - Megan Bonar, 4th, at South Dakota (1/18/17)
Defensive Rebounds	5	Taylor Thunstedt, 1st, at North Dakota State (1/7/2017)
Fouls	3 (3x)	MR - Jalen O'Bannon, 4th, vs Eastern Kentucky (12/21/16)
Assists	4 (4x)	MR - Lauren Dickerson, 1st, vs Miami (Ohio), 12/19/16)
Blocked Shots	3	Hannah Little, 1st, vs Oakland (11/19/16)
Steals	3 (2x)	MR - Taylor Gleason, 3rd, vs Oakland (11/19/16)

## OPPONENT TEAM QUARTER HIGHS

Points	32	1st, at South Dakota (1/18/17)
1st Quarter Points	31	at South Dakota (1/18/17)
2nd Quarter Points	21	vs Belmont (11/11/16)
3rd Quarter Points	25 (2x)	MR - at South Dakota (1/18/17)
4th Quarter Points	30 (2x)	MR - vs Denver (1/12/17)
Fewest Points	5	at Butler (11/16/16)
FG Made	13	1st, at South Dakota (1/18/17)
FG Att.	20	1st, vs Coastal Carolina (11/26/16)
Highest FG Pct.	.909 (10-11)	1st, vs Oral Roberts (1/21/17)
Lowest FG Pct.	.154 (2-13) (2x)	MR - 1st, at Western Michigan (12/6/16)
3-Pt FG Made	4 (4x)	MR - 3rd, at Oral Roberts (12/31/16)
3-Pt FG Att.	10	4th, vs Belmont (11/11/16)
3-Pt FG Pct. (2 made)	1.000 (3-3) (2x)	MR - 1st, vs Oral Roberts (1/21/17)
FT Made	11	4th, vs Oral Roberts (1/21/17)
FT Att.	14	4th, vs Oral Roberts (1/21/17)
FT Pct (5 made)	1.000 (8-8)	3rd, at South Dakota State (1/5/17)
Rebounds	18	1st, vs Belmont (11/11/16)
Offensive Rebounds	7 (3x)	MR - 2nd, vs Oral Roberts (1/21/17)
Defensive Rebounds	13	1st, vs Belmont (11/11/16)
Fouls	12	4th, vs. Eastern Kentucky (12/21/16)
Assists	7 (2x)	MR - 2nd, vs Omaha (1/25/17)
Turnovers	10	1st, vs Omaha (1/25/17)
Blocked Shots	5	1st, at South Dakota (1/18/17)
Steals	6 (3x)	MR - 3rd, vs Oakland (11/19/16)

## FORT WAYNE INDIVIDUAL RECORDS

Points	
GAME .....	43, Lindy Jones at St. Joseph's (1/27/96)
.....	43, Amanda Hyde at Southern Illinois (11/29/12)
SEASON .....	752, Lisa Miller (1991-92)
CAREER .....	2358, Lisa Miller (1988-92)

Scoring Average	
SEASON .....	26.0, Lindy Jones (1995-96)
CAREER .....	21.2, Lisa Miller (1988-92)

Field Goals Made	
GAME .....	18, Lindy Jones at St. Joseph's (1/27/96)
SEASON .....	243, Lisa Miller (1991-92)
CAREER .....	808, Lisa Miller (1988-92)

Field Goals Attempted	
GAME .....	30, Lindy Jones at St. Joseph's (1/27/96)
SEASON .....	537, Johnna Lewis-Carlisle (2007-08)
CAREER .....	1658, Johnna Lewis-Carlisle (2004-08)

Field Goal Percentage (min. 10 att.)	
GAME ....	.909 (10-of-11), Stephanie Rosado at Centenary (12/31/10)
SEASON .....	.578 (170-294), Rhonda Unverferth (1984-85)
CAREER .....	.561 (216-385), Amy Neuhouser (1988-90)

3-Point Field Goals Made	
GAME .....	9, Jamie Holderman vs SIUE (2/1/01)
.....	9, Jamie Holderman at Bellarmine (1/13/00)
SEASON .....	96, Anne Boese (2009-10)
CAREER .....	301, Anne Boese (2008-12)

3-Point Field Goals Attempted	
GAME .....	17, Anne Boese at Oral Roberts (12/29/10)
.....	17, Jordan Zuppe vs Toledo (11/29/08)
.....	17, Jamie Holderman at Missouri-St. Louis (2/15/01)
SEASON .....	96, Anne Boese, (2009-10)
CAREER .....	768, Anne Boese, (2008-12)

3-Point Field Goal Percentage (min. 5 att.)	
GAME .....	1.000 (6-of-6), Hilary O'Connell vs UMBC (12/20/05)
SEASON .....	.461 (41-89), Trish Fleming (2000-01)
CAREER .....	.413 (229-555), Haley Seibert (2011-15)

Free Throws Made	
GAME .....	22, Ashley Johnson vs North Dakota State (2/26/06)
SEASON .....	266, Lisa Miller, (1991-92)
CAREER .....	741, Lisa Miller, (1988-92)

Free Throw Attempts	
GAME .....	24, Lisa Miller at Wayne State (11/16/90)
SEASON .....	336, Lisa Miller, (1991-92)
CAREER .....	922, Lisa Miller, (1988-92)

Free Throw Percentage (min. 9 att.)	
GAME .....	1.000 (14-of-14) Haley Seibert vs NKU (12/6/14)
.....	1.000 (14-of-14) Amanda Hyde vs Indiana (11/12/13)
.....	1.000 (14-of-14) Amanda Hyde vs Purdue (12/6/12)
.....	1.000 (14-of-14) Lisa Miller vs St. Joseph's (1/2/92)
.....	1.000 (14-of-14) Lisa Miller vs Tri-State (12/3/88)
SEASON .....	.914 (127-139), Haley Seibert (2014-15)
CAREER .....	.868 (315-363), Haley Seibert (2011-15)

Rebounds.....	
GAME .....	23, Vereba Bibbs vs UALR (11/28/03)
SEASON .....	280, Pam Edwards, (1991-92)
CAREER .....	937, Lisa Miller, (1988-92)

Rebound Average	
SEASON .....	10.9, Ann McCleneghen (1979-80)
CAREER .....	8.4, Lisa Miller (1988-92)

Assists	
GAME .....	15, Wendy Recker vs Southern Indiana (1/28/95)
SEASON .....	197, Wendy Recker, (1994-95)
CAREER .....	419, Wendy Recker, (1993-96)

Assists Average	
SEASON .....	7.3, Wendy Recker (1994-95)
CAREER .....	5.1, Wendy Recker (1993-96)

Blocks	
GAME .....	8, Stephanie Rosado Indiana Tech (11/23/10)
SEASON .....	47, Stephanie Rosado, (2010-11)
CAREER .....	130, Jennie Newhard, (1992-96)

Blocks Average	
SEASON .....	1.6, Jennie Newhard (1993-94)
.....	1.6, Shalaura McMillan (1996-97)
CAREER .....	1.3, Jennie Newhard (1992-96)

Steals	
GAME .....	10, Kayla Drake at South Dakota State (1/22/11)
SEASON .....	80, Sue Hendricks, (1980-81)
CAREER .....	249, Lindy Jones, (1992-96)

Steals Average	
SEASON .....	3.5, Sue Hendricks (1980-81)
CAREER .....	2.8, Laure Renninger (1982-84)

Games Played	
SEASON .....	31, Amanda Hyde (2010-11)
.....	31, Stephanie Rosado (2010-11)
.....	31, Erin Murphy (2010-11)
.....	31, Anne Boese (2010-11)
.....	31, Jordan Zuppe (2010-11)
CAREER .....	121, Jordan Zuppe (2007-11)

Games Started	
SEASON .....	31, Anne Boese (2010-11)
.....	31, Stephanie Rosado (2010-11)
.....	31, Jordan Zuppe (2010-11)
CAREER .....	118, Jordan Zuppe (2007-11)

# THE LAST TIME FORT WAYNE...

## IN THE RANKINGS

Was Ranked ..... No. 18, 3/7/1996  
Played a Ranked (AP) Team ..... at No. 23 West Virginia, 12/13/2014 (L, 82-48)  
Defeated a Ranked (AP) Team ..... at No. 21 Michigan State, 12/1/2013 (W, 81-76)

## CONSECUTIVE GAME STREAKS

Won 5+ Consecutive Games ..... Dec. 31, 2010 - Jan. 24, 2011 (6 straight)  
Won 10+ Consecutive Games ..... Nov. 18, 1995 - Jan. 13, 1996 (14 straight)  
**Lost 5+ Consecutive Games ..... Dec. 28, 2016 - Jan. 21, 2017 (7 straight)**  
Lost 10+ Consecutive Games ..... Dec. 20, 2015 - Jan. 28, 2016 (11 straight)

## SCORING

**Scored 20-24 points ..... Rachel Rinehart (21), vs. Oral Roberts, 1/21/2017**  
Scored 25-29 points ..... Josie Fisher (28), at Western Illinois, 2/4/2016  
Scored 30-39 points ..... Kamilah Carter (30), vs. North Dakota State, 2/27/2016  
Scored ≥ 40 points ..... Amanda Hyde (41), at SIUE, 11/26/2013  
Freshman Scored 25+ points ..... Josie Fisher (28), at Western Illinois, 2/4/2016  
**Came off the bench to score 20 ..... Peyton Fallis (22), at Butler, 11/16/2016**  
Consecutive 25 point games ..... Amanda Hyde, (28), vs. Denver, 3/9/2014; (25), at UIC, 3/19/2014  
Two players scored 20 points ..... at Western Illinois, 2/4/2016  
..... Josie Fisher (28) and Kamilah Carter (22)  
Three players scored 20 points ..... vs. Omaha, 3/1/2014  
..... Haley Seibert (23), Ariana Simmons (22), Amanda Hyde (20)

**None in double figures ..... at Western Michigan, 12/6/2016**  
**One in double figures ..... De'Jour Young (11), at Illinois, 12/2/2016**  
**Two in double figures ..... vs. Oral Roberts, 1/21/2017**  
..... Rachel Rinehart (21) and De'Jour Young (16)

**Three in double figures ..... at South Dakota, 1/18/2017**  
..... Rachel Rinehart (14), De'Jour Young (13) and Anna Lappenküper (10)  
**Four in double figures ..... vs. Omaha, 1/25/2017**  
..... De'Jour Young (16), Zaria Atkins (15), Rachel Rinehart (14), and Anna Lappenküper (11)

Five in double figures ..... at Michigan State, 12/1/2013; Amanda Hyde (23),  
..... Haley Seibert (14), Rachel Mauk (14), Ariana Simmons (12), and Mur Hagerman (10)  
Six in double figures ..... vs. Trine, 12/30/2014; Keanna Gary (23), Kamilah Carter (20),  
..... Haley Seibert (12), Allyson Bunch (11), Courtney Ogle (10), and Brett Green (10)

**Scored ≥ 25 points/quarter ..... 25, 4th quarter, vs. Denver, 1/12/2017**  
Scored ≥ 50 points/half ..... 50, 1st half, vs. Grace, 11/16/2015  
Scored ≥ 100 points ..... 101, vs. Indiana Tech, 12/11/2013  
Scored ≥ 100 points/road game ..... 112, at Indiana-South Bend, 1/9/2002  
Scored ≥ 100 points/neutral site ..... 106, vs. Western Illinois, 3/10/2013 (@ Souix Falls, S.D.)  
**Scored < 10 points/quarter ..... 6, 3rd quarter, vs. Oral Roberts, 1/21/2017**  
**Scored ≤ 15 points/quarter ..... 13, 3rd quarter, vs. Omaha, 1/25/2017**  
**Scored ≤ 20 points/half ..... 20, 2nd half, at South Dakota State, 1/5/2017**  
**Scored ≤ 30 points/half ..... 27, 2nd half, vs. Oral Roberts, 1/21/2017**  
**Scored ≤ 50 points/game ..... 47, vs. Miami (Ohio), 12/19/2016**

## FIELD GOAL SHOOTING

**Shot ≥ 60%/quarter ..... 615 (8-of-13), 1st quarter, vs. Oral Roberts, 1/21/2017**  
Shot ≥ 70%/quarter ..... —  
Shot ≥ 60%/half ..... 600 (12-of-20), 2nd half, at South Dakota State, 2/8/2015  
Shot ≥ 70%/half ..... 741 (20-of-27), 2nd half, vs. Indiana Tech, 12/11/2013  
Shot ≥ 60%/game ..... 625 (30-of-48), vs. Western Illinois, 2/21/2009  
Shot ≥ 70%/game ..... 720 (36-of-50), vs. IUPUI, 1/23/1992  
**Shot ≤ 20%/quarter ..... 133 (2-of-15), 3rd quarter, vs. Oral Roberts, 1/21/2017**  
**Shot ≤ 20%/half ..... 185 (5-27), 1st half, at Western Michigan, 12/6/2016**  
**Shot ≤ 30%/quarter ..... 231 (3-of-13), 2nd quarter, at South Dakota, 1/18/2017**  
**Shot ≤ 30%/half ..... 206 (7-of-34), 2nd half, at South Dakota State, 1/5/2017**  
**Shot ≤ 30%/game ..... 288 (19-of-66), at South Dakota State, 1/5/2017**  
Shot ≤ 40%/game and won ..... 377 (23-of-61), vs. Denver, 1/30/2016  
Shot ≤ 30%/game and won ..... 288 (15-of-52), vs. Oral Roberts, 2/17/2016

## THREE-POINTERS

Made 6 ..... Kamilah Carter (6), vs. South Dakota, 2/25/2016  
Made 7 ..... Haley Seibert (7), at Omaha, 1/30/2014  
Made 8 ..... Anne Boese (8), vs. Butler, 11/20/2011  
Player Made 9 ..... Jamie Holderman (9), vs. SIU-Edwardsville, 2/1/2001  
**Attempted ≥ 10 ..... Anna Lappenküper (10), at South Dakota State, 1/5/2017**  
Attempted ≥ 15 ..... Anne Boese (17), at Oral Roberts, 12/29/2010  
Fort Wayne Made ≥ 15 ..... 16, at Chicago State, 12/4/2014  
**Fort Wayne Did not make a three-pointer ..... at Western Michigan, 12/6/2016**  
Fort Wayne Attempted ≥ 30 ..... 30, at South Dakota State, 2/13/2016  
Fort Wayne Attempted ≥ 44 ..... 48, vs. Bowling Green, 11/19/2004  
**Fort Wayne Shot 60% (min. 10 att.) ..... 600 (6-of-10), vs. Defiance, 11/12/2016**

## FREE THROWS

Made 10-of-10 or better ..... 10-10, Josie Fisher, vs. North Dakota State, 2/27/2016  
**Fort Wayne Shot 90% (min. 10 atts) ..... 944 (17-of-18), at South Dakota, 1/18/2017**  
Fort Wayne Shot ≤ 50% ..... 222 (2-of-9), at Omaha, 2/11/2016  
Fort Wayne Made ≥ 40 ..... 40 (attempted 48) vs. Southern Indiana, 2/6/1992  
**Fort Wayne Made ≤ 5 FTs ..... 4 (attempted 5), vs. Western Illinois, 12/28/2016**  
Fort Wayne Attempted ≥ 50 FTs ..... 52 (made 42), vs. Northern Kentucky, 12/21/1995  
**Fort Wayne Attempted ≤ 5 FTs ..... 5 (made 4), vs. Western Illinois, 12/28/2016**

## REBOUNDS

**Had ≥ 10 rebounds ..... De'Jour Young (11), vs. Denver, 1/12/2017**  
Two Players Had ≥ 10 rebounds ..... vs. USC Upstate, 11/21/2015  
..... Courtney Ogle (10) and De'Jour Young (10)  
Three Players Had ≥ 10 rebounds ..... at Saint Joseph's (IN), 2/9/1999  
..... Angie Womack (12), Katie Bruening (12), and Laura Douglas (10)  
Had ≥ 15 rebounds ..... Keanna Gary (16), at Denver, 1/9/2016  
Had ≥ 20 rebounds ..... Verea Bibbs (23), vs. UALR, 11/28/2003  
Had 10 rebounds in consecutive games ..... Keanna Gary  
..... (16), at Denver, 1/9/2016 and (11) vs. South Dakota State, 1/13/2016  
Had 10 rebounds in three consecutive games ..... Keanna Gary  
..... (16) vs. Western Illinois, 1/7/2016; (16), at Denver, 1/9/2016; and (11) vs. South Dakota State, 1/13/2016  
Had 10 rebounds in four consecutive games ..... Keanna Gary  
..... (10), vs. IUPUI, 1/1/2016; (16), vs. Western Illinois, 1/7/2016;  
..... (16), at Denver, 1/9/2016; and (11) vs. South Dakota State, 1/13/2016  
Had 10 rebounds in five consecutive games ..... Lisa Miller  
..... (13) at Kentucky Wesleyan, 2/18/1989; (10) vs. Northern Kentucky, 2/23/1989;  
..... (13) vs. Ashland, 2/25/1989; (16) vs. Wayne State, 2/28/1989; and (12) vs. Taylor, 11/17/1989  
Fort Wayne had ≥ 60 rebounds ..... vs. Shippensburg (65), 11/19/1995

## DOUBLE-DOUBLES

**Last Player ..... De'Jour Young (20 pts/11 rbs), vs. Denver, 1/12/2017**  
**Points & Rebounds ..... De'Jour Young (20 pts/11 rbs), vs. Denver, 1/12/2017**  
Points & Assists ..... Maggie Bruening (12 pts/10 ast), vs. Morehead State, 1/5/2004  
Points & Steals ..... Kayla Drake (27 pts/10 stl), at South Dakota State, 1/22/2011  
Rebounds & Assists ..... Lindsay Wertz (10 rbs/10 ast), at Quincy, 2/17/2001  
Double-double in consecutive games ..... Keanna Gary  
..... (10 pts/10 rbs), vs. IUPUI, 1/1/2016; (10 pts/16 rbs), vs. Western Illinois, 1/7/2016  
Double-double in three consecutive games ..... Stephanie Rosado  
..... (14 pts/10 rbs), vs. Akron, 11/15/2010; (22 pts/12 rbs), at Youngstown State, 11/20/2010;  
..... (31 pts/13 rbs), vs. Indiana Tech, 11/23/2010  
Double-double in four consecutive games ..... Sarah Turner  
..... (16 pts/11 rbs), vs. Ashland, 1/4/1988; (22 pts/13 rbs), vs. Lewis, 1/9/1988;  
..... (15 pts/10 rbs), vs. Huntington 1/16/1988; (17 pts/10 rbs), vs. Kentucky Wesleyan, 1/21/1988  
Two players had double-doubles ..... at North Dakota State, 1/9/2014  
..... Amanda Hyde (35 pts/10 rbs) and Stefanie Mauk (12 pts/10 rbs)  
Three players had double-doubles ..... vs. Taylor, 11/17/1989 (@ Huntington, Ind.)  
..... Lisa Miller (20 pts/12 rbs), Robin Scott (14 pts/10 rbs), and Pam Edwards (11 pts/11 rbs)  
30 points and 10 rebounds ..... Amanda Hyde (35 pts/10 rbs), at North Dakota State, 1/9/2014  
20 points and 15 rebounds ..... Stefanie Mauk (20 pts/15 rbs), vs. Rochester, 12/22/2012  
30 points and 15 rebounds ..... Pam Edwards (31 pts/18 rbs), vs. Ashland, 1/25/1992

## ASSISTS

Had ≥ 8 assists ..... Rachel Rinehart (8), vs. Western Illinois, 1/2/2015  
Had ≥ 9 assists ..... Amanda Hyde (9), at Detroit, 12/21/2013  
Had ≥ 10 assists ..... Jordan Zuppe (11), vs. Oral Roberts, 1/29/2011  
Had ≥ 15 assists ..... Wendy Recker (15), vs. Southern Indiana, 1/28/1995  
Had 10 assists in consecutive games ..... Maggie Bruening  
..... (10), vs. Morehead State, 1/5/2004; (10), vs. Air Force, 1/7/2004  
Fort Wayne had 20-24 assists ..... 20, vs. Kent State, 11/19/2015  
Fort Wayne had 25-29 assists ..... 28, vs. Kalamazoo, 12/2/2005  
Fort Wayne had ≥ 30 assists ..... 31, vs. Southern Indiana, 2/7/1991  
**Fort Wayne had < 10 assists ..... 6, at Wright State, 12/20/2016**  
**Fort Wayne had ≤ 5 assists ..... 4, at Oral Roberts, 12/31/2016**

## BLOCKED SHOTS

Blocked 5-6 shots ..... Ariana Simmons (5), vs. Ball State, 12/29/2013  
Blocked ≥ 7 shots ..... Stephanie Rosado (8), vs. Indiana Tech, 11/23/2010  
Fort Wayne blocked ≥ 10 shots ..... 11, vs. Indiana Tech, 11/23/2010

## STEALS

**Had 5 steals ..... Rachel Rinehart vs. Western Illinois, 12/28/2016**  
**Had 6 steals ..... Rachel Rinehart vs. Oral Roberts, 1/21/2017**  
Had 7 steals ..... Haley Seibert at North Dakota State, 1/17/2015  
Had ≥ 8 steals ..... Kayla Drake (10), at South Dakota State, 1/22/2011  
Two Players Had ≥ 5 steals ..... at Milwaukee, 12/28/2015  
..... Rachel Rinehart (6) and Josie Fisher (5)  
Had 5 steals in consecutive games ..... Kayla Drake  
..... (10), at South Dakota State, 1/22/2011; (6), at North Dakota State, 1/24/2011  
Fort Wayne had ≥ 20 steals ..... 21, at Milwaukee, 12/28/2015

## TURNOVERS

**Committed ≥ 20 turnovers ..... 22, vs. Western Illinois, 12/28/2016**  
**Committed ≥ 25 turnovers ..... 25, vs. Oakland, 11/19/2016**  
Committed ≤ 5 turnovers ..... 5, at Western Illinois, 2/4/2016  
**Committed < 10 turnovers ..... 9, vs. Omaha, 1/25/2017**

## OVERTIME

Played an OT game ..... at Denver (L, 53-50), 1/9/2016  
Played multiple overtimes ..... at North Dakota State (W, 98-89, 2ot), 1/9/2014  
Won an OT game ..... at North Dakota State (W, 98-89, 2ot), 1/9/2014  
Won in multiple overtimes ..... at North Dakota State (W, 98-89, 2ot), 1/9/2014  
Won an OT game at home ..... vs. UMKC (W, 82-76), 12/3/2011  
Won an OT game at neutral site ..... vs. Western Illinois (W, 106-101, 2ot), 3/10/2013  
Won an OT game on the road ..... at North Dakota State (W, 98-89, 2ot), 1/9/2014  
Lost an OT game ..... at Denver (L, 53-50), 1/9/2016  
Lost in multiple overtimes ..... at Hampton (L, 78-77, 2ot), 12/19/2010  
Lost an OT game at home ..... vs. Detroit (L, 81-74), 12/2/2014  
Lost an OT game on the road ..... at Denver (L, 53-50), 1/9/2016



1

YULESKA RAMIREZ-TEJEDA

Freshman | 5-7  
Cambridge, Mass.  
Cambridge Rindge and Latin

GUARD

SEASON HIGH	CATEGORY	CAREER HIGH
24, at South Dakota, 1/18/2017	Minutes	24, at South Dakota, 1/18/2017
10, at North Dakota State, 1/7/2017	Points	10, at North Dakota State, 1/7/2017
7, vs. Denver, 1/12/2017	Rebounds	7, vs. Denver, 1/12/2017
1, three times	Assists	1, three times
3, at North Dakota State, 1/7/2017	Steals	3, at North Dakota State, 1/7/2017
1, at North Dakota State, 1/7/2017	Blocks	1, at North Dakota State, 1/7/2017
5, at North Dakota State, 1/7/2017	FG Made	5, at North Dakota State, 1/7/2017
10, at North Dakota State, 1/7/2017	FG Attempts	10, at North Dakota State, 1/7/2017
	3-PT Made	
	3-PT Attempts	
4, at South Dakota, 1/18/2017	FT Made	4, at South Dakota, 1/18/2017
4, at South Dakota, 1/18/2017	FT Attempts	4, at South Dakota, 1/18/2017

## SEASON STATS

Opponent	Date	gs	min	Total		3-Pointers		Free throws		Rebounds				pf	a	t/o	blk	stl	pts	avg
				fg-fga	pct	3fg-fga	pct	ft-fga	pct	off	def	tot	avg							
BELMONT	11/11/16	17		0-4	.000	0-0	.000	2-2	1.000	1	3	4	4.0	3	1	1	0	0	2	2.0
DEFIANCE	11/12/16	11		3-5	.600	0-0	.000	1-1	1.000	1	0	1	2.5	1	0	0	0	0	7	4.5
TRINE	11/14/16	6		0-0	.000	0-0	.000	2-2	1.000	0	2	2	2.3	3	0	0	0	0	2	3.7
at Butler	11/16/16	10		3-4	.750	0-0	.000	0-0	.000	0	1	1	2.0	2	0	1	0	1	6	4.3
OAKLAND	11/19/16	11		0-4	.000	0-0	.000	0-0	.000	0	1	1	1.8	0	0	0	0	0	0	3.4
COASTAL CAROLINA	11/26/16	5		0-2	.000	0-0	.000	0-0	.000	0	0	0	1.5	0	0	1	0	1	0	2.8
at Kent State	11/30/16	9		0-0	.000	0-0	.000	0-0	.000	1	3	4	1.9	1	0	1	0	0	0	2.4
at Illinois	12/02/16	4		0-0	.000	0-0	.000	0-0	.000	0	2	2	1.9	0	0	1	0	0	0	2.1
at Western Michigan	12/06/16	1		0-0	.000	0-0	.000	0-0	.000	0	0	0	1.7	0	0	1	0	0	0	1.9
at UIC	12/10/16	dnp		-	-	-	-	-	-	-	-	-	-	-	-	-	-	-	-	-
vs Miami (Ohio)	12/19/16	11		0-3	.000	0-0	.000	0-0	.000	2	0	2	1.7	1	0	0	0	0	0	1.7
at Wright State	12/20/16	dnp		-	-	-	-	-	-	-	-	-	-	-	-	-	-	-	-	-
vs Eastern Kentucky	12/21/16	2		0-0	.000	0-0	.000	0-0	.000	0	0	0	1.5	0	0	0	0	0	0	1.5
WESTERN ILLINOIS	12/28/16	4		0-0	.000	0-0	.000	0-0	.000	0	0	0	1.4	1	0	0	0	0	0	1.4
at Oral Roberts	12/31/16	21		1-2	.500	0-0	.000	0-0	.000	1	3	4	1.6	0	0	1	0	0	2	1.5
at South Dakota State	01/05/17	18		2-7	.286	0-0	.000	0-0	.000	2	2	4	1.8	0	0	2	0	0	4	1.6
at North Dakota State	01/07/17	22		5-10	.500	0-0	.000	0-0	.000	1	3	4	1.9	2	1	1	1	3	10	2.2
DENVER	01/12/17	16		1-4	.250	0-0	.000	0-0	.000	4	3	7	2.3	0	0	2	0	0	2	2.2
at South Dakota	01/18/17	24		2-4	.500	0-0	.000	4-4	1.000	0	3	3	2.3	0	1	1	0	0	8	2.5
ORAL ROBERTS	01/21/17	4		1-2	.500	0-0	.000	0-0	.000	1	0	1	2.2	0	0	0	0	0	2	2.5
OMAHA	01/25/17	dnp		-	-	-	-	-	-	-	-	-	-	-	-	-	-	-	-	-
Totals		0	196	18-51	.353	0-0	.000	9-9	1.000	14	26	40	2.2	14	3	13	1	5	45	2.5

Games played: 18  
 Minutes/game: 10.9  
 Points/game: 2.5  
 FG Pct: 35.3  
 FT Pct: 100.0

Rebounds/game: 2.2  
 Assists/game: 0.2  
 Turnovers/game: 0.7  
 Assist/turnover ratio: 0.2  
 Steals/game: 0.3  
 Blocks/game: 0.1

## CAREER STATS

			Total		3-Point		F-Throws		Rebounds										Scoring	
Season	gp-gs	min/avg	fg-fga	pct	fg-fga	pct	ft-fga	pct	off	def	tot	avg	pf	fo	ast	to	blk	stl	pts	avg
2016-17	18-0	196/10.9	18-51	.353	0-0	.000	9-9	1.000	14	26	40	2.2	14	0	3	13	1	5	45	2.5
TOTAL	18-0	196/10.9	18-51	.353	0-0	.000	9-9	1.000	14	26	40	2.2	14	0	3	13	1	5	45	2.5





SEASON HIGH	CATEGORY	CAREER HIGH
39, vs Eastern Kentucky, 12/21/2016	Minutes	39, vs Eastern Kentucky, 12/21/2016
12, two times	Points	22, at Illinois, 11/14/2014
8, vs Defiance, 11/12/2016	Rebounds	14, at Illinois, 11/14/2014
2, at UIC, 12/10/2016	Assists	4, at Western Illinois, 1/31/2015
3, vs Defiance, 11/12/2016	Steals	3, four times
1, three times	Blocks	2, at Omaha, 2/11/2016
5, two times	FG Made	7, vs. USC Upstate, 11/21/2015
11, vs Belmont, 11/11/2016	FG Attempts	11, two times
2, two times	3-PT Made	4, vs. Grace, 11/18/2014
4, at UIC, 12/10/2016	3-PT Attempts	7, at Detroit, 12/9/2015
6, vs Eastern Kentucky, 12/21/2016	FT Made	11, at Illinois, 11/14/2014
6, vs Eastern Kentucky, 12/21/2016	FT Attempts	12, at Illinois, 11/14/2014

• Summit League Player of the Week (11/17/2014)

## CAREER VS. IUPUI

Season	gp-gs	min/avg	Total fg-fga	pct	3-Point fg-fga	pct	F-Throws ft-fga	pct	Rebounds off	def	tot	avg	pf	fo	ast	to	blk	stl	pts	avg
2014-15	2-0	20/10.0	0-2	.000	0-2	.000	2-2	1.000	1	1	2	1.0	4	0	2	2	0	0	2	1.0
2015-16	2-1	44/22.0	3-13	.231	1-5	.200	0-0	.000	2	5	7	3.5	4	0	1	4	0	2	7	3.5
TOTAL	4-1	64/16.0	3-15	.200	1-7	.143	2-2	1.000	3	6	9	2.3	8	0	3	6	0	2	9	2.3

SINGLE-GAME HIGHS [all-time ranking]:

Points: 3, at IUPUI -- 2/21/16

Rebounds: 4, at IUPUI -- 2/21/16

Assists: 1, at IUPUI -- 01/04/15; IUPUI -- 02/11/15; at IUPUI -- 2/21/16

FG made: 1, at IUPUI -- 2/21/16

FG attempts: 5, at IUPUI -- 2/21/16

3FG made: 1, at IUPUI -- 2/21/16

3FG attempts: 3, at IUPUI -- 2/21/16

FT made: 2, at IUPUI -- 01/04/15

FT attempts: 2, at IUPUI -- 01/04/15

## SEASON STATS

			Total			3-Pointers		Free throws		Rebounds													
Opponent	Date	gs	min	fg-fga	pct	3fg-fga	pct	ft-fa	pct	off	def	tot	avg	pf	a	t/o	blk	stl	pts	avg			
BELMONT	11/11/16		23	5-11	.455	2-2	1.000	0-0	.000	0	4	4	4.0	4	1	0	0	0	12	12.0			
DEFIANCE	11/12/16	*	26	3-7	.429	2-3	.667	0-0	.000	2	6	8	6.0	2	1	1	1	3	8	10.0			
TRINE	11/14/16	*	19	1-6	.167	1-3	.333	0-0	.000	2	2	4	5.3	5	0	0	0	0	3	7.7			
at Butler	11/16/16	*	22	0-5	.000	0-1	.000	2-2	1.000	1	2	3	4.8	4	1	0	0	0	2	6.3			
OAKLAND	11/19/16	*	17	1-4	.250	0-0	.000	0-0	.000	0	2	2	4.2	3	1	1	0	2	2	5.4			
COASTAL CAROLINA	11/26/16	*	19	5-9	.556	1-2	.500	1-2	.500	0	1	1	3.7	2	1	2	0	1	12	6.5			
at Kent State	11/30/16	*	23	1-7	.143	0-2	.000	0-0	.000	0	1	1	3.3	3	0	2	0	2	2	5.9			
at Illinois	12/02/16	*	30	2-5	.400	1-2	.500	1-1	1.000	4	2	6	3.6	3	1	1	0	1	6	5.9			
at Western Michigan	12/06/16	*	18	1-3	.333	0-1	.000	0-0	.000	1	2	3	3.6	4	0	1	1	0	2	5.4			
at UIC	12/10/16	*	26	3-6	.500	1-4	.250	0-1	.000	2	5	7	3.9	2	2	2	0	0	7	5.6			
vs Miami (Ohio)	12/19/16	*	32	4-9	.444	0-3	.000	3-4	.750	3	1	4	3.9	3	0	1	0	2	11	6.1			
at Wright State	12/20/16	*	34	2-5	.400	0-0	.000	3-4	.750	0	5	5	4.0	4	0	3	0	0	7	6.2			
vs Eastern Kentucky	12/21/16	*	39	2-9	.222	0-2	.000	6-6	1.000	2	2	4	4.0	2	1	3	0	1	10	6.5			
WESTERN ILLINOIS	12/28/16	*	19	3-6	.500	1-2	.500	1-2	.500	2	4	6	4.1	3	1	2	0	1	8	6.6			
at Oral Roberts	12/31/16	*	29	1-7	.143	0-1	.000	4-4	1.000	2	3	5	4.2	1	1	1	0	0	6	6.5			
at South Dakota State	01/05/17	*	24	3-9	.333	0-1	.000	3-5	.600	4	2	6	4.3	5	1	0	0	1	9	6.7			
at North Dakota State	01/07/17	*	4	0-1	.000	0-0	.000	0-0	.000	0	1	1	4.1	0	0	1	1	0	0	6.3			
DENVER	01/12/17		dnp	-	-	-	-	-	-	-	-	-	-	-	-	-	-	-	-	-			
at South Dakota	01/18/17		dnp	-	-	-	-	-	-	-	-	-	-	-	-	-	-	-	-	-			
ORAL ROBERTS	01/21/17		dnp	-	-	-	-	-	-	-	-	-	-	-	-	-	-	-	-	-			
OMAHA	01/25/17		2	0-0	.000	0-0	.000	0-0	.000	0	0	0	3.9	1	1	1	0	0	0	5.9			
Totals		16	406	37-109	.339	9-29	.310	24-31	.774	25	45	70	3.9	51	13	22	3	14	107	5.9			

Games played: 18

Minutes/game: 22.6

Points/game: 5.9

FG Pct: 33.9

3FG Pct: 31.0

FT Pct: 77.4

Rebounds/game: 3.9

Assists/game: 0.7

Turnovers/game: 1.2

Assist/turnover ratio: 0.6

Steals/game: 0.8

Blocks/game: 0.2

## CAREER STATS

Season	gp-gs	min/avg	Total fg-fga	pct	3-Point fg-fga	pct	F-Throws ft-fga	pct	Rebounds off	def	tot	avg	pf	fo	ast	to	blk	stl	pts	avg
2014-15	30-4	503/16.8	41-129	.318	19-62	.306	45-65	.692	27	75	102	3.4	97	4	29	52	4	12	146	4.9
2015-16	29-19	568/19.6	47-142	.331	21-66	.318	34-46	.739	21	63	84	2.9	84	4	22	36	3	21	149	5.1
2016-17	18-16	406/22.6	37-109	.339	9-29	.310	24-31	.774	25	45	70	3.9	51	2	13	22	3	14	107	5.9
TOTAL	77-39	1477/19.2	125-380	.329	49-157	.312	103-142	.725	73	183	256	3.3	232	10	64	110	10	47	402	5.2





**12**  
**ANNA LAPPENKÜPER**

Freshman | 5-8  
Herne, Germany  
Otto Hahn Gymnasium

**GUARD**

SEASON HIGH	CATEGORY	CAREER HIGH
40, at North Dakota State, 1/7/2016	<b>Minutes</b>	40, at North Dakota State, 1/7/2016
13, vs Western Illinois, 12/28/2016	<b>Points</b>	13, vs Western Illinois, 12/28/2016
5, two times	<b>Rebounds</b>	5, two times
5, two times	<b>Assists</b>	5, two times
3, at North Dakota State, 1/7/2016	<b>Steals</b>	3, at North Dakota State, 1/7/2016
1, two times	<b>Blocks</b>	1, two times
5, three times	<b>FG Made</b>	5, three times
15, at South Dakota State, 1/5/2017	<b>FG Attempts</b>	15, at South Dakota State, 1/5/2017
3, vs Western Illinois, 12/28/2016	<b>3-PT Made</b>	3, vs Western Illinois, 12/28/2016
10, at South Dakota State, 1/5/2017	<b>3-PT Attempts</b>	10, at South Dakota State, 1/5/2017
7, at Oral Roberts, 12/31/2016	<b>FT Made</b>	7, at Oral Roberts, 12/31/2016
8, at Oral Roberts, 12/31/2016	<b>FT Attempts</b>	8, at Oral Roberts, 12/31/2016

• Competed for Germany's U16 and U18 National teams

## SEASON STATS

				Total		3-Pointers		Free throws		Rebounds											
Opponent	Date	gs	min	fg-fga	pct	3fg-fga	pct	ft-fa	pct	off	def	tot	avg	pf	a	t/o	blk	stl	pts	avg	
BELMONT	11/11/16	*	33	1-4	.250	0-1	.000	0-0	.000	0	5	5	5.0	2	5	4	0	1	2	2.0	
DEFIANCE	11/12/16	*	26	2-8	.250	0-2	.000	2-2	1.000	1	3	4	4.5	0	5	2	1	0	6	4.0	
TRINE	11/14/16	*	24	2-5	.400	0-1	.000	2-2	1.000	0	1	1	3.3	5	0	3	0	0	6	4.7	
at Butler	11/16/16	*	31	2-4	.500	1-2	.500	0-0	.000	0	2	2	3.0	3	0	4	0	2	5	4.8	
OAKLAND	11/19/16	*	32	2-6	.333	0-1	.000	0-0	.000	0	1	1	2.6	1	3	6	0	2	4	4.6	
COASTAL CAROLINA	11/26/16	*	29	3-7	.429	0-1	.000	0-0	.000	0	2	2	2.5	2	3	4	0	1	6	4.8	
at Kent State	11/30/16	*	19	0-3	.000	0-1	.000	0-0	.000	0	0	0	2.1	2	1	3	0	1	0	4.1	
at Illinois	12/02/16		25	3-6	.500	1-2	.500	0-0	.000	0	1	1	2.0	0	0	5	0	0	7	4.5	
at Western Michigan	12/06/16		26	0-4	.000	0-2	.000	0-0	.000	0	5	5	2.3	1	0	5	1	0	0	4.0	
at UIC	12/10/16		20	1-3	.333	0-1	.000	2-2	1.000	1	2	3	2.4	2	2	1	0	0	4	4.0	
vs Miami (Ohio)	12/19/16		34	1-7	.143	0-3	.000	3-6	.500	1	2	3	2.5	2	1	2	0	0	5	4.1	
at Wright State	12/20/16	*	29	3-4	.750	0-1	.000	0-0	.000	1	2	3	2.5	3	1	3	0	0	6	4.3	
vs Eastern Kentucky	12/21/16		21	2-4	.500	2-3	.667	0-0	.000	0	2	2	2.5	1	0	4	0	1	6	4.4	
WESTERN ILLINOIS	12/28/16	*	36	5-8	.625	3-4	.750	0-0	.000	0	3	3	2.5	1	0	7	0	1	13	5.0	
at Oral Roberts	12/31/16	*	28	2-3	.667	0-1	.000	7-8	.875	0	3	3	2.5	5	0	1	0	0	11	5.4	
at South Dakota State	01/05/17	*	39	5-15	.333	2-10	.200	0-0	.000	0	4	4	2.6	3	0	1	0	2	12	5.8	
at North Dakota State	01/07/17	*	40	4-11	.364	2-5	.400	2-2	1.000	0	2	2	2.6	3	3	3	0	3	12	6.2	
DENVER	01/12/17	*	28	3-7	.429	1-3	.333	0-0	.000	0	2	2	2.6	4	2	1	0	0	7	6.2	
at South Dakota	01/18/17	*	33	4-14	.286	2-7	.286	0-0	.000	1	0	1	2.5	1	0	3	0	0	10	6.4	
ORAL ROBERTS	01/21/17	*	30	2-10	.200	0-4	.000	0-0	.000	1	3	4	2.6	1	2	2	0	2	4	6.3	
OMAHA	01/25/17	*	36	5-8	.625	1-1	1.000	0-0	.000	0	3	3	2.6	1	3	1	0	1	11	6.5	
Totals			16	619	52-141	.369	15-56	.268	18-22	.818	6	48	54	2.6	43	31	65	2	17	137	6.5

Games played: 21  
Minutes/game: 29.5  
Points/game: 6.5  
FG Pct: 36.9  
3FG Pct: 26.8  
FT Pct: 81.8

Rebounds/game: 2.6  
Assists/game: 1.5  
Turnovers/game: 3.1  
Assist/turnover ratio: 0.5  
Steals/game: 0.8  
Blocks/game: 0.1

## CAREER STATS

			Total		3-Point		F-Throws		Rebounds											Scoring	
Season	gp-gs	min/avg	fg-fga	pct	fg-fga	pct	ft-fa	pct	off	def	tot	avg	pf	fo	ast	to	blk	stl	pts	avg	
2016-17	21-16	619/29.5	52-141	.369	15-56	.268	18-22	.818	6	48	54	2.6	43	2	31	65	2	17	137	6.5	
TOTAL	21-16	619/29.5	52-141	.369	15-56	.268	18-22	.818	6	48	54	2.6	43	2	31	65	2	17	137	6.5	



SEASON HIGH	CATEGORY	CAREER HIGH
39, two times	Minutes	39, two times
21, vs Oakland, 11/19/2016	Points	21, vs Oakland, 11/19/2016
11, vs. Denver, 1/12/2017	Rebounds	11, vs. Denver, 1/12/2017
5, three times	Assists	5, three times
4, vs Omaha, 1/25/2017	Steals	5, vs. Grace, 11/16/2015
1, two times	Blocks	2, two times
7, five times	FG Made	7, five times
18, vs Western Illinois, 12/28/2016	FG Attempts	18, vs Western Illinois, 12/28/2016
3, vs Oakland, 11/19/2016	3-PT Made	3, vs Oakland, 11/19/2016
5, two times	3-PT Attempts	5, two times
8, vs Oakland, 11/19/2016	FT Made	8, vs Oakland, 11/19/2016
10, vs Oakland, 11/19/2016	FT Attempts	10, vs Oakland, 11/19/2016

## CAREER VS. IUPUI

Season	gp-gs	min/avg	Total fg-fga	pct	3-Point fg-fga	pct	F-Throws ft-fga	pct	Rebounds off	def	tot	avg	pf	fo	ast	to	blk	stl	pts	avg
2015-16	2-2	47/23.5	5-11	.455	0-1	.000	2-4	.500	2	0	2	1.0	6	0	1	2	0	3	12	6.0
TOTAL	2-2	47/23.5	5-11	.455	0-1	.000	2-4	.500	2	0	2	1.0	6	0	1	2	0	3	12	6.0

SINGLE-GAME HIGHS [all-time ranking]:

Points: 5, at IUPUI -- 2/21/16

Rebounds: 1, at IUPUI -- 2/21/16

Assists: 1, at IUPUI -- 2/21/16

Steals: 2, at IUPUI -- 2/21/16

FG made: 2, at IUPUI -- 2/21/16

FG attempts: 6, at IUPUI -- 2/21/16

3FG attempts: 1, at IUPUI -- 2/21/16

FT made: 1, at IUPUI -- 2/21/16

FT attempts: 3, at IUPUI -- 2/21/16

## SEASON STATS

				Total		3-Pointers		Free throws		Rebounds											
Opponent	Date	qs	min	fg-fga	pct	3fg-fga	pct	ft-fga	pct	off	def	tot	avg	pf	a	t/o	blk	stl	pts	avg	
BELMONT	11/11/16	*	25	4-9	.444	0-2	.000	2-2	1.000	3	3	6	6.0	3	1	1	0	0	10	10.0	
DEFIANCE	11/12/16	*	16	6-9	.667	1-1	1.000	0-0	.000	3	1	4	5.0	1	3	2	0	0	13	11.5	
TRINE	11/14/16	*	28	6-13	.462	2-5	.400	2-2	1.000	0	1	1	3.7	4	0	3	0	3	16	13.0	
at Butler	11/16/16	*	13	1-3	.333	0-0	.000	0-0	.000	0	0	0	2.8	1	1	1	0	0	2	10.3	
OAKLAND	11/19/16	*	32	5-9	.556	3-5	.600	8-10	.800	2	3	5	3.2	4	1	4	0	0	21	12.4	
COASTAL CAROLINA	11/26/16	*	32	2-5	.400	0-2	.000	4-4	1.000	1	6	7	3.8	3	0	4	0	1	8	11.7	
at Kent State	11/30/16	*	22	4-6	.667	1-3	.333	3-4	.750	0	1	1	3.4	3	1	2	0	2	12	11.7	
at Illinois	12/02/16	*	34	3-13	.231	0-4	.000	5-6	.833	2	3	5	3.6	1	2	3	0	0	11	11.6	
at Western Michigan	12/06/16	*	33	3-12	.250	0-4	.000	3-3	1.000	2	5	7	4.0	1	1	2	0	0	9	11.3	
at UIC	12/10/16	*	36	7-15	.467	1-4	.250	2-2	1.000	2	7	9	4.5	1	4	3	0	1	17	11.9	
vs Miami (Ohio)	12/19/16	*	22	3-8	.375	0-3	.000	0-0	.000	2	1	3	4.4	2	1	2	0	0	6	11.4	
at Wright State	12/20/16	*	39	4-7	.571	0-2	.000	6-6	1.000	1	3	4	4.3	0	1	5	0	0	14	11.6	
vs Eastern Kentucky	12/21/16	*	38	7-12	.583	0-1	.000	5-6	.833	1	8	9	4.7	3	1	1	0	2	19	12.2	
WESTERN ILLINOIS	12/28/16	*	36	7-18	.389	1-4	.250	0-0	.000	0	5	5	4.7	3	0	2	0	1	15	12.4	
at Oral Roberts	12/31/16	*	31	2-4	.500	0-0	.000	4-4	1.000	1	2	3	4.6	1	2	4	0	2	8	12.1	
at South Dakota State	01/05/17	*	30	3-9	.333	0-1	.000	0-0	.000	0	6	6	4.7	4	5	2	0	2	6	11.7	
at North Dakota State	01/07/17	*	38	6-14	.429	0-2	.000	4-4	1.000	2	3	5	4.7	2	5	1	0	0	16	11.9	
DENVER	01/12/17	*	38	7-17	.412	1-3	.333	5-7	.714	5	6	11	5.1	5	5	1	1	0	20	12.4	
at South Dakota	01/18/17	*	28	6-16	.375	0-2	.000	1-1	1.000	0	2	2	4.9	4	3	3	1	0	13	12.4	
ORAL ROBERTS	01/21/17	*	37	7-16	.438	1-3	.333	1-1	1.000	3	1	4	4.9	4	2	2	0	0	16	12.6	
OMAHA	01/25/17	*	39	5-17	.294	1-3	.333	5-6	.833	4	3	7	5.0	2	3	2	0	4	16	12.8	
Totals			21	647	98-232	.422	12-54	.222	60-68	.882	34	70	104	5.0	52	42	50	2	18	268	12.8

Games played: 21

Minutes/game: 30.8

Points/game: 12.8

FG Pct: 42.2

3FG Pct: 22.2

FT Pct: 88.2

Rebounds/game: 5.0

Assists/game: 2.0

Turnovers/game: 2.4

Assist/turnover ratio: 0.8

Steals/game: 0.9

Blocks/game: 0.1

## CAREER STATS

Season	gp-gs	min/avg	Total fg-fga	pct	3-Point fg-fga	pct	F-Throws ft-fga	pct	Rebounds off	def	tot	avg	pf	fo	ast	to	blk	stl	pts	avg
2015-16	30-21	688/22.9	72-176	.409	8-19	.421	51-72	.708	55	52	107	3.6	69	1	34	34	8	33	203	6.8
2016-17	21-21	647/30.8	98-232	.422	12-54	.222	60-68	.882	34	70	104	5.0	52	1	42	50	2	18	268	12.8
TOTAL	51-42	1335/26.2	170-408	.417	20-73	.274	111-140	.793	89	122	211	4.1	121	2	76	84	10	51	471	9.2



**SELENA LOZADA**

Senior | 6-2  
Perth Amboy, N.J.  
Western Guilford  
Guilford Technical CC

**FORWARD**

SEASON HIGH	CATEGORY	CAREER HIGH
34, vs. Omaha, 1/25/2017	Minutes	34, vs. Omaha, 1/25/2017
12, two times	Points	13, vs. Trine, 11/16/2015
9, vs. Oral Roberts, 1/21/2017	Rebounds	9, vs. Oral Roberts, 1/21/2017
3, vs Eastern Kentucky, 12/21/2016	Assists	3, vs Eastern Kentucky, 12/21/2016
1, ten times	Steals	2, two times
3, vs Western Illinois, 12/28/2016	Blocks	3, vs Western Illinois, 12/28/2016
6, two times	FG Made	6, two times
17, at Oral Roberts, 12/31/2016	FG Attempts	17, at Oral Roberts, 12/31/2016
	3-PT Made	
1, at Illinois, 12/2/2016	3-PT Attempts	1, at Illinois, 12/2/2016
4, at Kent State, 11/30/2016	FT Made	7, vs. Trine, 11/16/2015
8, vs Defiance, 11/12/2016	FT Attempts	10, vs. Trine, 11/16/2015

• Named to the 2015-16 Summit League Winter/Spring Academic Honor Roll

CAREER VS. IUPUI

			Total		3-Point		F-Throws		Rebounds											Scoring	
Season	gp-gs	min/avg	fg-fga	pct	fg-fga	pct	ft-fa	pct	off	def	tot	avg	pf	fo	ast	to	blk	stl	pts	avg	
2015-16	1-0	4/4.0	0-1	.000	0-0	.000	0-0	.000	0	0	0	0.0	3	0	0	0	0	0	0	0.0	
TOTAL	1-0	4/4.0	0-1	.000	0-0	.000	0-0	.000	0	0	0	0.0	3	0	0	0	0	0	0	0.0	

SINGLE-GAME HIGHS [all-time ranking]:  
FG attempts: 1, at IUPUI -- 2/21/16

SEASON STATS

Opponent	Date	qs	min	Total		3-Pointers		Free throws		Rebounds				pf	a	t/o	blk	stl	pts	avg	
				fg-fga	pct	3fg-fga	pct	ft-fa	pct	off	def	tot	avg								
BELMONT	11/11/16	*	28	6-15	.400	0-0	.000	0-2	.000	3	3	6	6.0	5	1	0	1	1	12	12.0	
DEFIANCE	11/12/16	*	13	2-6	.333	0-0	.000	3-8	.375	2	2	4	5.0	2	0	1	0	1	7	9.5	
TRINE	11/14/16	*	16	3-6	.500	0-0	.000	0-0	.000	2	3	5	5.0	3	1	1	2	0	6	8.3	
at Butler	11/16/16	*	12	1-3	.333	0-0	.000	0-0	.000	0	0	0	3.8	2	0	1	0	0	2	6.8	
OAKLAND	11/19/16		20	4-6	.667	0-0	.000	1-3	.333	3	2	5	4.0	2	0	1	0	1	9	7.2	
COASTAL CAROLINA	11/26/16	*	15	2-7	.286	0-0	.000	3-3	1.000	6	0	6	4.3	4	1	1	1	1	7	7.2	
at Kent State	11/30/16	*	27	2-3	.667	0-0	.000	4-4	1.000	1	5	6	4.6	4	0	2	1	0	8	7.3	
at Illinois	12/02/16	*	25	0-3	.000	0-1	.000	0-0	.000	1	1	2	4.3	2	0	2	1	0	0	6.4	
at Western Michigan	12/06/16	*	26	2-5	.400	0-0	.000	0-0	.000	2	0	2	4.0	4	0	2	0	0	4	6.1	
at UIC	12/10/16	*	25	2-5	.400	0-0	.000	1-1	1.000	1	3	4	4.0	3	0	2	0	0	5	6.0	
vs Miami (Ohio)	12/19/16	*	23	0-2	.000	0-0	.000	3-4	.750	0	1	1	3.7	4	0	2	0	0	3	5.7	
at Wright State	12/20/16		21	2-5	.400	0-0	.000	1-2	.500	2	0	2	3.6	4	0	2	1	1	5	5.7	
vs Eastern Kentucky	12/21/16	*	30	1-4	.250	0-0	.000	0-2	.000	3	4	7	3.8	2	3	4	0	1	2	5.4	
WESTERN ILLINOIS	12/28/16		18	0-2	.000	0-0	.000	0-0	.000	0	4	4	3.9	0	0	1	3	0	0	5.0	
at Oral Roberts	12/31/16		20	6-17	.353	0-0	.000	0-0	.000	3	3	6	4.0	3	0	1	1	1	12	5.5	
at South Dakota State	01/05/17	dnp		-	-	-	-	-	-	-	-	-	-	-	-	-	-	-	-	-	
at North Dakota State	01/07/17	dnp		-	-	-	-	-	-	-	-	-	-	-	-	-	-	-	-	-	
DENVER	01/12/17	*	22	3-11	.273	0-0	.000	3-3	1.000	2	2	4	4.0	4	0	1	1	0	9	5.7	
at South Dakota	01/18/17	*	30	2-5	.400	0-0	.000	3-3	1.000	3	4	7	4.2	0	0	0	1	1	7	5.8	
ORAL ROBERTS	01/21/17	*	32	3-9	.333	0-0	.000	2-3	.667	4	5	9	4.4	3	2	1	0	1	8	5.9	
OMAHA	01/25/17	*	34	4-7	.571	0-0	.000	1-2	.500	0	1	1	4.3	5	1	0	1	1	9	6.1	
Totals			15	437	45-121	.372	0-1	.000	25-40	.625	38	43	81	4.3	56	9	25	14	10	115	6.1

Games played: 19  
 Minutes/game: 23.0  
 Points/game: 6.1  
 FG Pct: 37.2  
 3FG Pct: 0.0  
 FT Pct: 62.5

Rebounds/game: 4.3  
 Assists/game: 0.5  
 Turnovers/game: 1.3  
 Assist/turnover ratio: 0.4  
 Steals/game: 0.5  
 Blocks/game: 0.7

CAREER STATS

			Total		3-Point		F-Throws		Rebounds											Scoring	
Season	gp-gs	min/avg	fg-fga	pct	fg-fga	pct	ft-fa	pct	off	def	tot	avg	pf	fo	ast	to	blk	stl	pts	avg	
2015-16	25-6	251/10.0	21-71	.296	0-0	.000	18-36	.500	13	27	40	1.6	41	0	2	15	4	5	60	2.4	
2016-17	19-15	437/23.0	45-121	.372	0-1	.000	25-40	.625	38	43	81	4.3	56	2	9	25	14	10	115	6.1	
TOTAL	44-21	688/15.6	66-192	.344	0-1	.000	43-76	.566	51	70	121	2.8	97	2	11	40	18	15	175	4.0	



SEASON HIGH	CATEGORY	CAREER HIGH
24, at UIC, 12/10/2016	Minutes	25, vs. Denver, 1/30/2016
9, two times	Points	9, four times
5, three times	Rebounds	6, at Northern Kentucky, 12/5/2015
2, vs Miami (Ohio), 12/19/2016	Assists	2, vs Miami (Ohio), 12/19/2016
2, two times	Steals	2, two times
1, six times	Blocks	1, nine times
4, at UIC, 12/10/2016	FG Made	4, two times
10, at Butler, 11/16/2016	FG Attempts	10, at Butler, 11/16/2016
—	3-PT Made	—
2, vs Miami (Ohio), 12/19/2016	3-PT Attempts	2, vs Miami (Ohio), 12/19/2016
3, two times	FT Made	7, at Northern Kentucky, 12/5/2015
4, three times	FT Attempts	8, at Northern Kentucky, 12/5/2015

## CAREER VS. IUPUI

Season	gp-gs	min/avg	Total fg-fga	pct	3-Point fg-fga	pct	F-Throws ft-fga	pct	Rebounds off	def	tot	avg	pf	fo	ast	to	blk	stl	pts	avg
2015-16	2-0	17/8.5	1-5	.200	0-0	.000	0-0	.000	0	3	3	1.5	6	0	0	4	1	0	2	1.0
TOTAL	2-0	17/8.5	1-5	.200	0-0	.000	0-0	.000	0	3	3	1.5	6	0	0	4	1	0	2	1.0

SINGLE-GAME HIGHS [all-time ranking]:

Points: 2, at IUPUI -- 2/21/16

Rebounds: 1, at IUPUI -- 2/21/16

FG made: 1, at IUPUI -- 2/21/16

FG attempts: 4, at IUPUI -- 2/21/16

## SEASON STATS

Opponent	Date	gs	min	Total fg-fga	pct	3-Pointers 3fg-fga	pct	Free throws ft-fga	pct	Rebounds off	def	tot	avg	pf	a	t/o	blk	stl	pts	avg
BELMONT	11/11/16	*	21	2-8	.250	0-0	.000	1-2	.500	0	1	1	1.0	3	0	1	0	0	5	5.0
DEFIANCE	11/12/16		20	3-8	.375	0-0	.000	0-0	.000	1	4	5	3.0	5	0	3	0	1	6	5.5
TRINE	11/14/16		18	2-5	.400	0-0	.000	1-4	.250	1	2	3	3.0	2	0	0	0	0	5	5.3
at Butler	11/16/16		25	3-10	.300	0-0	.000	3-4	.750	1	4	5	3.5	5	0	0	0	2	9	6.3
OAKLAND	11/19/16		13	1-3	.333	0-0	.000	2-2	1.000	1	0	1	3.0	4	0	1	0	0	4	5.8
COASTAL CAROLINA	11/26/16		22	2-9	.222	0-0	.000	0-0	.000	3	2	5	3.3	3	0	2	0	0	4	5.5
at Kent State	11/30/16		14	1-5	.200	0-0	.000	1-2	.500	1	0	1	3.0	5	0	1	1	0	3	5.1
at Illinois	12/02/16		21	1-3	.333	0-0	.000	0-0	.000	1	0	1	2.8	3	0	3	1	0	2	4.8
at Western Michigan	12/06/16		21	3-6	.500	0-0	.000	1-2	.500	0	2	2	2.7	3	0	0	0	1	7	5.0
at UIC	12/10/16		24	4-7	.571	0-0	.000	1-2	.500	1	1	2	2.6	4	1	2	1	2	9	5.4
vs Miami (Ohio)	12/19/16		21	1-5	.200	0-2	.000	0-0	.000	1	1	2	2.5	2	2	4	0	0	2	5.1
at Wright State	12/20/16		7	0-2	.000	0-0	.000	0-0	.000	0	2	2	2.5	1	0	1	0	0	0	4.7
vs Eastern Kentucky	12/21/16	dnf	-	-	-	-	-	-	-	-	-	-	-	-	-	-	-	-	-	-
WESTERN ILLINOIS	12/28/16		6	0-2	.000	0-0	.000	0-0	.000	0	1	1	2.4	1	0	0	0	0	0	4.3
at Oral Roberts	12/31/16		5	0-3	.000	0-0	.000	0-0	.000	0	0	0	2.2	5	0	1	0	0	0	4.0
at South Dakota State	01/05/17		16	0-2	.000	0-0	.000	0-0	.000	1	0	1	2.1	2	0	1	1	0	0	3.7
at North Dakota State	01/07/17		21	1-5	.200	0-0	.000	0-2	.000	1	2	3	2.2	5	0	0	0	0	2	3.6
DENVER	01/12/17		21	1-3	.333	0-1	.000	3-4	.750	1	1	2	2.2	1	1	1	1	0	5	3.7
at South Dakota	01/18/17		15	1-1	1.000	0-0	.000	1-1	1.000	0	1	1	2.1	4	0	0	1	0	3	3.7
ORAL ROBERTS	01/21/17		14	1-2	.500	0-0	.000	2-2	1.000	0	2	2	2.1	2	0	2	0	1	4	3.7
OMAHA	01/25/17		5	0-1	.000	0-0	.000	0-0	.000	2	1	3	2.2	1	0	1	0	0	0	3.5
Totals		1	330	27-90	.300	0-3	.000	16-27	.593	16	27	43	2.2	61	4	24	6	7	70	3.5

Games played: 20  
Minutes/game: 16.5  
Points/game: 3.5  
FG Pct: 30.0  
3FG Pct: 0.0  
FT Pct: 59.3

Rebounds/game: 2.2  
Assists/game: 0.2  
Turnovers/game: 1.2  
Assist/turnover ratio: 0.2  
Steals/game: 0.4  
Blocks/game: 0.3

## CAREER STATS

Season	gp-gs	min/avg	Total fg-fga	pct	3-Point fg-fga	pct	F-Throws ft-fga	pct	Rebounds off	def	tot	avg	pf	fo	ast	to	blk	stl	pts	avg
2015-16	25-1	216/8.6	16-46	.348	0-0	.000	10-13	.769	10	25	35	1.4	39	0	0	10	3	5	42	1.7
2016-17	20-1	330/16.5	27-90	.300	0-3	.000	16-27	.593	16	27	43	2.2	61	5	4	24	6	7	70	3.5
TOTAL	45-2	546/12.1	43-136	.316	0-3	.000	26-40	.650	26	52	78	1.7	100	5	4	34	9	12	112	2.5





SEASON HIGH	CATEGORY	CAREER HIGH
40, vs. Denver, 1/12/2017	Minutes	40, vs. Denver, 1/12/2017
18, vs. Eastern Kentucky, 12/21/2016	Points	18, vs. Eastern Kentucky, 12/21/2016
7, vs. Miami (Ohio), 12/19/2016	Rebounds	7, vs. Miami (Ohio), 12/19/2016
6, vs. Omaha, 1/25/2017	Assists	6, vs. Omaha, 1/25/2017
3, two times	Steals	3, two times
	Blocks	
6, at North Dakota State, 1/7/2016	FG Made	6, at North Dakota State, 1/7/2016
13, at North Dakota State, 1/7/2016	FG Attempts	13, at North Dakota State, 1/7/2016
3, vs. Omaha, 1/25/2017	3-PT Made	3, vs. Omaha, 1/25/2017
6, two times	3-PT Attempts	6, two times
9, vs Eastern Kentucky, 12/21/2016	FT Made	9, vs Eastern Kentucky, 12/21/2016
9, vs Eastern Kentucky, 12/21/2016	FT Attempts	9, vs Eastern Kentucky, 12/21/2016

## SEASON STATS

Opponent	Date	gs	min	Total	pct	3-Pointers	pct	Free throws	pct	Rebounds	off	def	tot	avg	pf	a	t/o	blk	stl	pts	avg
BELMONT	11/11/16		21	1-6	.167	0-2	.000	2-2	1.000		0	2	2	2.0	1	0	2	0	0	4	4.0
DEFIANCE	11/12/16		17	2-7	.286	0-0	.000	3-4	.750		0	0	0	1.0	1	3	1	0	3	7	5.5
TRINE	11/14/16		22	3-6	.500	0-2	.000	0-0	.000		1	0	1	1.0	1	0	1	0	0	6	5.7
at Butler	11/16/16		17	2-4	.500	1-2	.500	0-0	.000		0	1	1	1.0	0	1	0	0	0	5	5.5
OAKLAND	11/19/16		13	1-3	.333	0-0	.000	4-4	1.000		0	0	0	0.8	2	1	1	0	2	6	5.6
COASTAL CAROLINA	11/26/16		25	5-7	.714	0-1	.000	4-4	1.000		1	0	1	0.8	4	1	2	0	0	14	7.0
at Kent State	11/30/16	*	31	3-10	.300	2-2	1.000	2-3	.667		1	1	2	1.0	2	2	2	0	0	10	7.4
at Illinois	12/02/16	*	30	0-5	.000	0-2	.000	5-8	.625		1	3	4	1.4	1	1	1	0	1	5	7.1
at Western Michigan	12/06/16	*	23	1-6	.167	0-0	.000	4-4	1.000		2	3	5	1.8	1	1	5	0	1	6	7.0
at UIC	12/10/16	*	16	0-2	.000	0-0	.000	3-4	.750		0	3	3	1.9	0	0	2	0	1	3	6.6
vs Miami (Ohio)	12/19/16	*	24	5-10	.500	2-5	.400	0-0	.000		1	6	7	2.4	3	1	4	0	1	12	7.1
at Wright State	12/20/16	*	38	4-8	.500	2-3	.667	2-2	1.000		1	3	4	2.5	1	2	3	0	1	12	7.5
vs Eastern Kentucky	12/21/16	*	34	4-8	.500	1-3	.333	9-9	1.000		1	4	5	2.7	1	2	5	0	2	18	8.3
WESTERN ILLINOIS	12/28/16	*	30	2-7	.286	0-3	.000	1-1	1.000		0	1	1	2.6	3	4	4	0	1	5	8.1
at Oral Roberts	12/31/16	*	33	5-8	.625	1-1	1.000	2-2	1.000		0	0	0	2.4	0	1	2	0	1	13	8.4
at South Dakota State	01/05/17	*	36	0-8	.000	0-2	.000	7-8	.875		1	1	2	2.4	1	5	1	0	0	7	8.3
at North Dakota State	01/07/17	*	38	5-13	.385	2-6	.333	0-0	.000		1	1	2	2.4	3	3	1	0	3	12	8.5
DENVER	01/12/17	*	40	5-11	.455	2-2	1.000	4-6	.667		2	1	3	2.4	2	4	4	0	0	16	8.9
at South Dakota	01/18/17	*	36	1-3	.333	0-2	.000	2-2	1.000		1	1	2	2.4	1	2	3	0	2	4	8.7
ORAL ROBERTS	01/21/17	*	38	1-6	.167	0-3	.000	2-2	1.000		0	0	0	2.3	3	4	0	0	0	4	8.5
OMAHA	01/25/17	*	39	4-9	.444	3-6	.500	4-4	1.000		0	0	0	2.1	1	6	1	0	2	15	8.8
Totals		15	601	54-147	.367	16-47	.340	60-69	.870		14	31	45	2.1	32	44	45	0	21	184	8.8

Games played: 21  
Minutes/game: 28.6  
Points/game: 8.8  
FG Pct: 36.7  
3FG Pct: 34.0  
FT Pct: 87.0

Rebounds/game: 2.1  
Assists/game: 2.1  
Turnovers/game: 2.1  
Assist/turnover ratio: 1.0  
Steals/game: 1.0

## CAREER STATS

			Total		3-Point		F-Throws		Rebounds											Scoring	
Season	gp-gs	min/avg	fg-fga	pct	fg-fga	pct	ft-fta	pct	off	def	tot	avg	pf	fo	ast	to	blk	stl	pts	avg	
2016-17	21-15	601/28.6	54-147	.367	16-47	.340	60-69	.870	14	31	45	2.1	32	0	44	45	0	21	184	8.8	
TOTAL	21-15	601/28.6	54-147	.367	16-47	.340	60-69	.870	14	31	45	2.1	32	0	44	45	0	21	184	8.8	



**PEYTON FALLIS**

Sophomore | 5-10  
Indianapolis, Ind.  
Heritage Christian

**GUARD**

**23**

SEASON HIGH	CATEGORY	CAREER HIGH
32, at Western Michigan, 12/6/2016	Minutes	32, at Western Michigan, 12/6/2016
22, at Butler, 11/16/2016	Points	22, at Butler, 11/16/2016
5, at Western Michigan, 12/6/2016	Rebounds	5, three times
2, three times	Assists	3, two times
2, two times	Steals	3, two times
1, vs Western Illinois, 12/28/2016	Blocks	1, three times
7, at Butler, 11/16/2016	FG Made	7, at Butler, 11/16/2016
11, two times	FG Attempts	14, vs. Western Michigan, 11/29/2015
4, at Butler, 11/16/2016	3-PT Made	4, at Butler, 11/16/2016
6, at Butler, 11/16/2016	3-PT Attempts	6, two times
4, at Butler, 11/16/2016	FT Made	4, at Butler, 11/16/2016
4, at Butler, 11/16/2016	FT Attempts	6, two times

• Named to the 2015-16 Summit League Winter/Spring Academic Honor Roll

## CAREER VS. IUPUI

Season	gp-gs	min/avg	Total fg-fga	pct	3-Point fg-fga	pct	F-Throws ft-fga	pct	Rebounds off	def	tot	avg	pf	fo	ast	to	blk	stl	pts	avg
2015-16	1-0	14/14.0	0-2	.000	0-2	.000	0-0	.000	1	2	3	3.0	1	0	1	2	0	1	0	0.0
TOTAL	1-0	14/14.0	0-2	.000	0-2	.000	0-0	.000	1	2	3	3.0	1	0	1	2	0	1	0	0.0

SINGLE-GAME HIGHS [all-time ranking]:

## SEASON STATS

			Total		3-Pointers		Free throws		Rebounds													
Opponent	Date	gs	min	fg-fga	pct	3fg-fga	pct	ft-fa	pct	off	def	tot	avg	pf	a	t/o	blk	stl	pts	avg		
BELMONT	11/11/16		dnp	-	-	-	-	-	-	-	-	-	-	-	-	-	-	-	-	-		
DEFIANCE	11/12/16		dnp	-	-	-	-	-	-	-	-	-	-	-	-	-	-	-	-	-		
TRINE	11/14/16		26	4-10	.400	1-4	.250	3-3	1.000	1	0	1	1.0	0	1	1	0	2	12	12.0		
at Butler	11/16/16		29	7-11	.636	4-6	.667	4-4	1.000	0	1	1	1.0	1	2	4	0	1	22	17.0		
OAKLAND	11/19/16	*	29	2-9	.222	0-4	.000	0-0	.000	0	2	2	1.3	1	2	6	0	1	4	12.7		
COASTAL CAROLINA	11/26/16		27	3-9	.333	0-2	.000	0-2	.000	1	2	3	1.8	4	1	1	0	0	6	11.0		
at Kent State	11/30/16		18	0-6	.000	0-2	.000	2-2	1.000	2	1	3	2.0	4	2	1	0	0	2	9.2		
at Illinois	12/02/16		4	0-2	.000	0-0	.000	0-0	.000	0	1	1	1.8	1	0	2	0	0	0	7.7		
at Western Michigan	12/06/16		32	2-11	.182	0-3	.000	1-2	.500	1	4	5	2.3	3	1	3	0	2	5	7.3		
at UIC	12/10/16		21	0-3	.000	0-2	.000	0-0	.000	0	1	1	2.1	5	0	4	0	0	0	6.4		
vs Miami (Ohio)	12/19/16		dnp	-	-	-	-	-	-	-	-	-	-	-	-	-	-	-	-	-		
at Wright State	12/20/16		dnp	-	-	-	-	-	-	-	-	-	-	-	-	-	-	-	-	-		
vs Eastern Kentucky	12/21/16		dnp	-	-	-	-	-	-	-	-	-	-	-	-	-	-	-	-	-		
WESTERN ILLINOIS	12/28/16		20	1-3	.333	0-1	.000	0-0	.000	0	0	0	1.9	1	0	3	1	0	2	5.9		
at Oral Roberts	12/31/16		8	1-3	.333	0-0	.000	0-0	.000	1	2	3	2.0	0	0	1	0	0	2	5.5		
at South Dakota State	01/05/17		dnp	-	-	-	-	-	-	-	-	-	-	-	-	-	-	-	-	-		
at North Dakota State	01/07/17		dnp	-	-	-	-	-	-	-	-	-	-	-	-	-	-	-	-	-		
DENVER	01/12/17		dnp	-	-	-	-	-	-	-	-	-	-	-	-	-	-	-	-	-		
at South Dakota	01/18/17		dnp	-	-	-	-	-	-	-	-	-	-	-	-	-	-	-	-	-		
ORAL ROBERTS	01/21/17		7	0-0	.000	0-0	.000	0-0	.000	0	0	0	1.8	0	0	1	0	0	0	5.0		
OMAHA	01/25/17		5	0-2	.000	0-1	.000	0-0	.000	0	0	0	1.7	1	0	0	0	0	0	4.6		
Totals		1	226	20-69	.290	5-25	.200	10-13	.769	6	14	20	1.7	21	9	27	1	6	55	4.6		

Games played: 12  
Minutes/game: 18.8  
Points/game: 4.6  
FG Pct: 29.0  
3FG Pct: 20.0  
FT Pct: 76.9

Rebounds/game: 1.7  
Assists/game: 0.8  
Turnovers/game: 2.3  
Assist/turnover ratio: 0.3  
Steals/game: 0.5  
Blocks/game: 0.1

## CAREER STATS

Season	gp-gs	min/avg	Total fg-fga	pct	3-Point fg-fga	pct	F-Throws ft-fga	pct	Rebounds off	def	tot	avg	pf	fo	ast	to	blk	stl	pts	avg
2015-16	28-1	408/14.6	32-132	.242	11-54	.204	23-37	.622	17	38	55	2.0	57	0	23	41	2	23	98	3.5
2016-17	12-1	226/18.8	20-69	.290	5-25	.200	10-13	.769	6	14	20	1.7	21	1	9	27	1	6	55	4.6
TOTAL	40-2	634/15.9	52-201	.259	16-79	.203	33-50	.660	23	52	75	1.9	78	1	32	68	3	29	153	3.8



SEASON HIGH	CATEGORY	CAREER HIGH
40, vs. Omaha, 1/25/2017	Minutes	40, vs. Omaha, 1/25/2017
21, vs. Oral Roberts, 1/21/2017	Points	31, vs. Western Illinois, 1/2/2015
10, at Illinois, 12/2/2016	Rebounds	10, at Illinois, 12/2/2016
6, vs. Trine, 11/14/2016	Assists	8, two times
6, vs. Oral Roberts, 1/21/2017	Steals	6, two times
1, at North Dakota State, 1/7/2017	Blocks	2, at Oral Roberts, 2/28/2014
10, vs. Oral Roberts, 1/21/2017	FG Made	12, vs. Western Illinois, 1/2/2015
16, at South Dakota State, 1/5/2017	FG Attempts	20, vs. Western Illinois, 1/2/2015
2, vs. Eastern Kentucky, 12/21/2016	3-PT Made	3, two times
6, at South Dakota State, 1/5/2017	3-PT Attempts	8, vs. Indiana, 11/12/2013
8, at UIC, 12/10/2016	FT Made	8, three times
11, at UIC, 12/10/2016	FT Attempts	11, at UIC, 12/10/2016

## CAREER VS. IUPUI

Season	gp-gs	min/avg	Total fg-fga	pct	3-Point fg-fga	pct	F-Throws ft-fa	pct	Rebounds off	def	tot	avg	pf	fo	ast	to	blk	stl	pts	avg
2013-14	2-0	21/10.5	2-2	1.000	1-1	1.000	3-4	.750	0	2	2	1.0	4	0	0	6	0	2	8	4.0
2014-15	2-2	52/26.0	4-14	.286	1-3	.333	1-4	.250	2	3	5	2.5	7	1	7	4	0	1	10	5.0
2015-16	2-2	54/27.0	6-11	.545	1-1	1.000	2-5	.400	6	5	11	5.5	10	2	5	9	0	5	15	7.5
TOTAL	6-4	127/21.2	12-27	.444	3-5	.600	6-13	.462	8	10	18	3.0	21	3	12	19	0	8	33	5.5

SINGLE-GAME HIGHS [all-time ranking]:

Points: 7, IUPUI -- 02/11/15

Rebounds: 6, at IUPUI -- 2/21/16

Assists: 5, at IUPUI -- 01/04/15

Steals: 2, at IUPUI -- 2/21/16

FG made: 3, IUPUI -- 02/11/15

FG attempts: 8, IUPUI -- 02/11/15

3FG made: 1, at IUPUI -- 01/25/14; IUPUI -- 02/11/15

3FG attempts: 2, IUPUI -- 02/11/15

FT made: 2, at IUPUI -- 01/25/14

FT attempts: 4, at IUPUI -- 01/04/15

## SEASON STATS

Opponent	Date	gs	min	Total		3-Pointers		Free throws		Rebounds				pf	a	t/o	blk	stl	pts	avg	
				fg-fga	pct	3fg-fga	pct	ft-fa	pct	off	def	tot	avg								
BELMONT	11/11/16	*	23	3-5	.600	1-1	1.000	0-1	.000	0	0	0	0.0	3	1	4	0	0	7	7.0	
DEFIANCE	11/12/16	*	17	3-6	.500	0-0	.000	0-0	.000	0	3	3	1.5	2	5	0	0	1	6	6.5	
TRINE	11/14/16	*	21	3-6	.500	0-1	.000	2-3	.667	2	3	5	2.7	5	6	2	0	1	8	7.0	
at Butler	11/16/16	*	29	3-5	.600	0-0	.000	4-4	1.000	1	3	4	3.0	3	5	3	0	1	10	7.8	
OAKLAND	11/19/16	*	28	3-6	.500	1-1	1.000	1-1	1.000	0	5	5	3.4	1	3	3	0	3	8	7.8	
COASTAL CAROLINA	11/26/16	*	16	0-0	.000	0-0	.000	0-0	.000	0	1	1	3.0	2	1	1	0	0	6.5		
at Kent State	11/30/16		26	5-6	.833	1-1	1.000	1-1	1.000	1	2	3	3.0	5	2	3	0	2	12	7.3	
at Illinois	12/02/16	*	24	1-3	.333	0-0	.000	0-0	.000	1	9	10	3.9	2	0	1	0	0	2	6.6	
at Western Michigan	12/06/16	*	19	1-9	.111	0-3	.000	0-0	.000	1	0	1	3.6	3	1	1	0	1	2	6.1	
at UIC	12/10/16	*	32	4-8	.500	0-2	.000	8-11	.727	4	1	5	3.7	4	3	3	0	2	16	7.1	
vs Miami (Ohio)	12/19/16	*	20	2-4	.500	0-2	.000	0-0	.000	3	2	5	3.8	3	2	3	0	2	4	6.8	
at Wright State	12/20/16	*	29	3-6	.500	0-2	.000	1-2	.500	1	3	4	3.8	1	2	3	0	0	7	6.8	
vs Eastern Kentucky	12/21/16	*	34	3-6	.500	2-3	.667	5-5	1.000	1	3	4	3.8	3	4	4	0	2	13	7.3	
WESTERN ILLINOIS	12/28/16	*	31	4-7	.571	0-1	.000	2-2	1.000	0	2	2	3.7	3	5	3	0	5	10	7.5	
at Oral Roberts	12/31/16	*	22	1-4	.250	0-1	.000	0-0	.000	1	4	5	3.8	2	0	2	0	2	2	7.1	
at South Dakota State	01/05/17	*	37	6-16	.375	1-6	.167	0-0	.000	1	2	3	3.8	2	1	1	0	4	13	7.5	
at North Dakota State	01/07/17	*	35	2-10	.200	0-2	.000	0-0	.000	0	2	2	3.6	2	2	2	1	3	4	7.3	
DENVER	01/12/17	*	35	6-9	.667	1-2	.500	0-0	.000	5	4	9	3.9	4	2	2	0	0	13	7.6	
at South Dakota	01/18/17	*	34	4-10	.400	0-2	.000	6-7	.857	0	4	4	3.9	4	4	3	0	0	14	7.9	
ORAL ROBERTS	01/21/17	*	38	10-15	.667	0-0	.000	1-1	1.000	1	3	4	4.0	5	1	3	0	6	21	8.6	
OMAHA	01/25/17	*	40	5-11	.455	0-1	.000	4-6	.667	1	3	4	4.0	1	3	3	0	3	14	8.9	
Totals			20	590	72-152	.474	7-31	226	35-44	.795	24	59	83	4.0	60	53	50	1	38	186	8.9

Games played: 21

Minutes/game: 28.1

Points/game: 8.9

FG Pct: 47.4

3FG Pct: 22.6

FT Pct: 79.5

Rebounds/game: 4.0

Assists/game: 2.5

Turnovers/game: 2.4

Assist/turnover ratio: 1.1

Steals/game: 1.8

Blocks/game: 0.0

## CAREER STATS

Season	gp-gs	min/avg	Total fg-fga	pct	3-Point fg-fga	pct	F-Throws ft-fa	pct	Rebounds off	def	tot	avg	pf	fo	ast	to	blk	stl	pts	avg
2013-14	30-0	374/12.5	43-107	.402	17-51	.333	44-66	.667	15	42	57	1.9	45	0	40	30	0	17	147	4.9
2014-15	30-29	787/26.2	94-235	.400	20-66	.303	67-91	.736	33	78	111	3.7	82	3	77	77	7	44	275	9.2
2015-16	30-23	780/26.0	70-178	.393	11-43	.256	43-66	.652	41	76	117	3.9	96	7	86	71	1	50	194	6.5
2016-17	21-20	590/28.1	72-152	.474	7-31	.226	35-44	.795	24	59	83	4.0	60	3	53	50	1	38	186	8.9
TOTAL	111-72	2531/22.8	279-672	.415	55-191	.288	189-267	.708	113	255	368	3.3	283	13	256	228	9	149	802	7.2



**NIA THOMAS**  
 Sophomore | 5-8  
 Liberty Township, Ohio  
 Lakota East  
 Lincoln Trail College  
**GUARD**

SEASON HIGH	CATEGORY	CAREER HIGH
13, vs Miami (Ohio), 12/19/2016	Minutes	13, vs Miami (Ohio), 12/19/2016
6, at Kent State, 11/30/2016	Points	6, at Kent State, 11/30/2016
3, two times	Rebounds	3, two times
1, vs Miami (Ohio), 12/19/2016	Assists	1, vs Miami (Ohio), 12/19/2016
1, at Illinois, 12/2/2016	Steals	1, at Illinois, 12/2/2016
	Blocks	
2, at Kent State, 11/30/2016	FG Made	2, at Kent State, 11/30/2016
4, at Kent State, 11/30/2016	FG Attempts	4, at Kent State, 11/30/2016
1, at Kent State, 11/30/2016	3-PT Made	1, at Kent State, 11/30/2016
1, two times	3-PT Attempts	1, two times
2, vs Miami (Ohio), 12/19/2016	FT Made	2, vs Miami (Ohio), 12/19/2016
2, two times	FT Attempts	2, two times

## SEASON STATS

Opponent	Date	gs	min	Total		3-Pointers		Free throws		Rebounds				pf	a	t/o	blk	stl	pts	avg
				fg-fga	pct	3fg-fga	pct	ft-fga	pct	off	def	tot	avg							
BELMONT	11/11/16	dnp		-	-	-	-	-	-	-	-	-	-	-	-	-	-	-	-	-
DEFIANCE	11/12/16	10		1-3	.333	0-0	.000	0-0	.000	2	1	3	3.0	1	0	2	0	0	2	2.0
TRINE	11/14/16	dnp		-	-	-	-	-	-	-	-	-	-	-	-	-	-	-	-	-
at Butler	11/16/16	dnp		-	-	-	-	-	-	-	-	-	-	-	-	-	-	-	-	-
OAKLAND	11/19/16	1		0-0	.000	0-0	.000	0-0	.000	0	0	0	1.5	0	0	0	0	0	0	1.0
COASTAL CAROLINA	11/26/16	3		0-0	.000	0-0	.000	0-0	.000	0	0	0	1.0	0	0	0	0	0	0	0.7
at Kent State	11/30/16	11		2-4	.500	1-1	1.000	1-2	.500	0	2	2	1.3	2	0	0	0	0	6	2.0
at Illinois	12/02/16	3		0-0	.000	0-0	.000	0-0	.000	0	0	0	1.0	0	0	0	0	1	0	1.6
at Western Michigan	12/06/16	1		0-0	.000	0-0	.000	0-0	.000	0	0	0	0.8	0	0	0	0	0	0	1.3
at UIC	12/10/16	dnp		-	-	-	-	-	-	-	-	-	-	-	-	-	-	-	-	-
vs Miami (Ohio)	12/19/16	13		1-2	.500	0-0	.000	2-2	1.000	1	2	3	1.1	3	1	1	0	0	4	1.7
at Wright State	12/20/16	3		0-0	.000	0-0	.000	0-0	.000	0	0	0	1.0	0	0	0	0	0	0	1.5
vs Eastern Kentucky	12/21/16	2		0-2	.000	0-1	.000	0-0	.000	1	0	1	1.0	0	0	0	0	0	0	1.3
WESTERN ILLINOIS	12/28/16	dnp		-	-	-	-	-	-	-	-	-	-	-	-	-	-	-	-	-
at Oral Roberts	12/31/16	3		0-0	.000	0-0	.000	0-0	.000	0	0	0	0.9	0	0	1	0	0	0	1.2
at South Dakota State	01/05/17	dnp		-	-	-	-	-	-	-	-	-	-	-	-	-	-	-	-	-
at North Dakota State	01/07/17	2		0-1	.000	0-0	.000	0-0	.000	0	0	0	0.8	1	0	0	0	0	0	1.1
DENVER	01/12/17	dnp		-	-	-	-	-	-	-	-	-	-	-	-	-	-	-	-	-
at South Dakota	01/18/17	dnp		-	-	-	-	-	-	-	-	-	-	-	-	-	-	-	-	-
ORAL ROBERTS	01/21/17	dnp		-	-	-	-	-	-	-	-	-	-	-	-	-	-	-	-	-
OMAHA	01/25/17	dnp		-	-	-	-	-	-	-	-	-	-	-	-	-	-	-	-	-
Totals		0	52	4-12	.333	1-2	.500	3-4	.750	4	5	9	0.8	7	1	4	0	1	12	1.1

Games played: 11  
 Minutes/game: 4.7  
 Points/game: 1.1  
 FG Pct: 33.3  
 3FG Pct: 50.0  
 FT Pct: 75.0

Rebounds/game: 0.8  
 Assists/game: 0.1  
 Turnovers/game: 0.4  
 Assist/turnover ratio: 0.3  
 Steals/game: 0.1



**HANNAH HESS**  
 Freshman | 5-9  
 Oregon, Ohio  
 Clay  
**GUARD**

SEASON HIGH	CATEGORY	CAREER HIGH
	Minutes	
	Points	
	Rebounds	
	Assists	
	Steals	
	Blocks	
	FG Made	
	FG Attempts	
	3-PT Made	
	3-PT Attempts	
	FT Made	
	FT Attempts	



# FORT WAYNE SEASON STATS

RECORD:	OVERALL	HOME	AWAY	NEUTRAL
ALL GAMES	4-17	2-7	1-9	1-1
CONFERENCE	1-7	1-3	0-4	0-0
NON-CONFERENCE	3-10	1-4	1-5	1-1

#	Player	gp-gs	min	avg	Total		3-Point		F-Throw		Rebounds				pf	dq	a	to	blk	stl	pts	avg
					fg-fga	fg%	3fg-fga	3fg%	ft-fga	ft%	off	def	tot	avg								
01	Y. Ramirez-Tejeda	18-0	196	10.9	18-51	.353	0-0	.000	9-9	1.000	14	26	40	2.2	14	0	3	13	1	5	45	2.5
02	Nia Thomas	11-0	52	4.7	4-12	.333	1-2	.500	3-4	.750	4	5	9	0.8	7	0	1	4	0	1	12	1.1
03	KeShyra McCarver	18-16	406	22.6	37-109	.339	9-29	.310	24-31	.774	25	45	70	3.9	51	2	13	22	3	14	107	5.9
12	Anna Lappenküper	21-16	619	29.5	52-141	.369	15-56	.268	18-22	.818	6	48	54	2.6	43	2	31	65	2	17	137	6.5
13	De'Jour Young	21-21	647	30.8	98-232	.422	12-54	.222	60-68	.882	34	70	104	5.0	52	1	42	50	2	18	268	12.8
15	Selena Lozada	19-15	437	23.0	45-121	.372	0-1	.000	25-40	.625	38	43	81	4.3	56	2	9	25	14	10	115	6.1
21	Isis Parker	20-1	330	16.5	27-90	.300	0-3	.000	16-27	.593	16	27	43	2.2	61	5	4	24	6	7	70	3.5
22	Zaria Atkins	21-15	601	28.6	54-147	.367	16-47	.340	60-69	.870	14	31	45	2.1	32	0	44	45	0	21	184	8.8
23	Peyton Fallis	12-1	226	18.8	20-69	.290	5-25	.200	10-13	.769	6	14	20	1.7	21	1	9	27	1	6	55	4.6
31	Rachel Rinehart	21-20	590	28.1	72-152	.474	7-31	.226	35-44	.795	24	59	83	4.0	60	3	53	50	1	38	186	8.9
32	Lindley Kistler	6-0	64	10.7	9-19	.474	5-12	.417	7-10	.700	4	14	18	3.0	5	0	1	6	4	3	30	5.0
Team											39	33	72				16					
Total.....		21	4168		436-1143	.381	70-260	.269	267-337	.792	224	415	639	30.4	402	16	210	347	34	140	1209	57.6
Opponents.....		21	4174		554-1170	.474	109-278	.392	258-374	.690	242	488	730	34.8	374	7	290	315	87	155	1475	70.2

TEAM STATISTICS	FW	OPP
SCORING	1209	1475
Points per game	57.6	70.2
Scoring margin	-12.7	-
FIELD GOALS-ATT	436-1143	554-1170
Field goal pct	.381	.474
3 POINT FG-ATT	70-260	109-278
3-point FG pct	.269	.392
3-pt FG made per game	3.3	5.2
FREE THROWS-ATT	267-337	258-374
Free throw pct	.792	.690
F-Throws made per game	12.7	12.3
REBOUNDS	639	730
Rebounds per game	30.4	34.8
Rebounding margin	-4.3	-
ASSISTS	210	290
Assists per game	10.0	13.8
TURNOVERS	347	315
Turnovers per game	16.5	15.0
Turnover margin	-1.5	-
Assist/turnover ratio	0.6	0.9
STEALS	140	155
Steals per game	6.7	7.4
BLOCKS	34	87
Blocks per game	1.6	4.1
ATTENDANCE	7905	8059
Home games-Avg/Game	9-878	10-712
Neutral site-Avg/Game	-	2-472

Date	Opponent		Score	Att.
11/11/16	BELMONT	L	59-85	1049
11/12/16	DEFIANCE	W	76-58	525
11/14/16	TRINE	L	71-80	565
11/16/16	at Butler	L	64-70	565
^ 11/19/16	OAKLAND	L	61-82	1667
^ 11/26/16	COASTAL CAROLINA	L	57-72	1789
11/30/16	at Kent State	L	55-66	327
12/02/16	at Illinois	L	33-56	1173
12/06/16	at Western Michigan	L	35-61	558
12/10/16	at UIC	W	61-55	200
# 12/19/16	vs Miami (Ohio)	L	47-69	391
# 12/20/16	at Wright State	L	51-62	438
# 12/21/16	vs Eastern Kentucky	W	68-59	552
* 12/28/16	WESTERN ILLINOIS	L	53-75	568
* 12/31/16	at Oral Roberts	L	56-82	330
* 01/05/17	at South Dakota State	L	51-73	1276
* 01/07/17	at North Dakota State	L	56-68	638
* 01/12/17	DENVER	L	72-78	539
* 01/18/17	at South Dakota	L	59-87	1611
* 01/21/17	ORAL ROBERTS	L	59-75	657
* 01/25/17	OMAHA	W	65-62	546

^ = at Memorial Coliseum

# = Wright State Invitational Presented by Holiday Inn

\* = Summit League game

Score by Periods	1st	2nd	3rd	4th	Totals
Fort Wayne	274	305	299	331	1209
Opponents	391	321	370	393	1475

# FORT WAYNE SUMMIT LEAGUE STATS

RECORD:	OVERALL	HOME	AWAY	NEUTRAL
ALL GAMES	1-7	1-3	0-4	0-0
CONFERENCE	1-7	1-3	0-4	0-0
NON-CONFERENCE	0-0	0-0	0-0	0-0

#	Player	gp-gs	min	avg	Total		3-Point		F-Throw		Rebounds				pf	dq	a	to	blk	stl	pts	avg
					fg-fga	fg%	3fg-fga	3fg%	ft-fta	ft%	off	def	tot	avg								
01	Y. Ramirez-Tejeda	7-0	109	15.6	12-29	.414	0-0	.000	4-4	1.000	9	14	23	3.3	3	0	2	7	1	3	28	4.0
02	Nia Thomas	2-0	5	2.5	0-1	.000	0-0	.000	0-0	.000	0	0	0	0.0	1	0	0	1	0	0	0	0.0
03	KeShyra McCarver	5-4	78	15.6	7-23	.304	1-4	.250	8-11	.727	8	10	18	3.6	10	1	4	5	1	2	23	4.6
12	Anna Lappenküper	8-8	270	33.8	30-76	.395	11-35	.314	9-10	.900	2	20	22	2.8	19	1	10	19	0	9	80	10.0
13	De'Jour Young	8-8	277	34.6	43-111	.387	4-18	.222	20-23	.870	15	28	43	5.4	25	1	25	17	2	9	110	13.8
15	Selena Lozada	6-4	156	26.0	18-51	.353	0-0	.000	9-11	.818	12	19	31	5.2	15	1	3	4	7	4	45	7.5
21	Isis Parker	8-0	103	12.9	4-19	.211	0-1	.000	6-9	.667	5	8	13	1.6	21	2	1	6	3	1	14	1.8
22	Zaria Atkins	8-8	290	36.2	23-65	.354	8-25	.320	22-25	.880	5	5	10	1.3	14	0	29	16	0	9	76	9.5
23	Peyton Fallis	4-0	40	10.0	2-8	.250	0-2	.000	0-0	.000	1	2	3	0.8	2	0	0	5	1	0	4	1.0
31	Rachel Rinehart	8-8	272	34.0	38-82	.463	2-15	.133	13-16	.813	9	24	33	4.1	23	1	18	19	1	23	91	11.4
Team											16	10	26					6				
Total.....		8	1600		177-465	.381	26-100	.260	91-109	.835	82	140	222	27.8	133	7	92	105	16	60	471	58.9
Opponents.....		8	1600		232-447	.519	46-100	.460	90-120	.750	84	202	286	35.8	130	1	118	113	37	48	600	75.0

TEAM STATISTICS	FW	OPP	Date	Opponent	Score	Att.
SCORING	471	600	* 12/28/16	WESTERN ILLINOIS	L 53-75	568
Points per game	58.9	75.0	* 12/31/16	at Oral Roberts	L 56-82	330
Scoring margin	-16.1	-	* 01/05/17	at South Dakota State	L 51-73	1276
FIELD GOALS-ATT	177-465	232-447	* 01/07/17	at North Dakota State	L 56-68	638
Field goal pct	.381	.519	* 01/12/17	DENVER	L 72-78	539
3 POINT FG-ATT	26-100	46-100	* 01/18/17	at South Dakota	L 59-87	1611
3-point FG pct	.260	.460	* 01/21/17	ORAL ROBERTS	L 59-75	657
3-pt FG made per game	3.3	5.8	* 01/25/17	OMAHA	W 65-62	546
FREE THROWS-ATT	91-109	90-120				
Free throw pct	.835	.750				
F-Throws made per game	11.4	11.3				
REBOUNDS	222	286				
Rebounds per game	27.8	35.8				
Rebounding margin	-8.0	-				
ASSISTS	92	118				
Assists per game	11.5	14.8				
TURNOVERS	105	113				
Turnovers per game	13.1	14.1				
Turnover margin	+1.0	-				
Assist/turnover ratio	0.9	1.0				
STEALS	60	48				
Steals per game	7.5	6.0				
BLOCKS	16	37				
Blocks per game	2.0	4.6				
ATTENDANCE	2310	3855				
Home games-Avg/Game	4-578	4-964				
Neutral site-Avg/Game	-	0-0				

Score by Periods	1st	2nd	3rd	4th	Totals
Fort Wayne	119	117	105	130	471
Opponents	163	140	154	143	600

## TV/RADIO ROSTER



**#1 YULESKA RAMIREZ-TEJEDA**  
5-7 | Guard | Fr.  
Cambridge, Massachusetts



**#2 NIA THOMAS**  
5-8 | Guard | So.  
Liberty Township, Ohio



**#3 KeSHYRA MCCARVER**  
5-10 | Forward | Jr.  
Toledo, Ohio



**#5 HANNAH HESS**  
5-9 | Guard | Fr.  
Oregon, Ohio



**#12 ANNA LAPPENKÜPER**  
5-8 | Guard | Fr.  
Herne, Germany



**#13 De'JOUR YOUNG**  
5-7 | Guard | So.  
Fort Wayne, Indiana



**#15 SELENA LOZADA**  
6-2 | Forward | Sr.  
Perth Amboy, New Jersey



**#21 ISIS PARKER**  
6-0 | Forward | So.  
Cleveland, Ohio



**#22 ZARIA ATKINS**  
5-7 | Guard | Fr.  
Dudley, North Carolina



**#23 PEYTON FALLIS**  
5-10 | Guard | So.  
Indianapolis, Indiana



**#31 RACHEL RINEHART**  
5-8 | Guard | Sr.  
Angola, Indiana



**NIECEE NELSON**  
Head Coach  
Concordia Portland '02



**TY SHAW**  
Assistant Coach  
Albertson '02



**MARCIE ALBERTS**  
Assistant Coach  
Ohio State '97



**CAROL DUNCAN**  
Assistant Coach  
Purdue '06



**HALEY SEIBERT**  
Graduate Assistant Coach  
IPFW '15





# 1 • YULESKA RAMIREZ-TEJEDA • (YOU-less-Kuh) • G • Jr. • 5-7 • Cambridge, Mass. • Cambridge Rindge and Latin

Season	GP	GS	MPG	Pts	PPG	RPG	Ast	Blk	Stl	FG%	3FG%	FT%
	18	0	10.9	45	2.5	2.22	3	1	5	.353	.000	1.000
Career	GP	GS	MPG	Pts	PPG	RPG	Ast	Blk	Stl	FG%	3FG%	FT%
	18	0	10.9	45	2.5	2.22	3	1	5	.353	.000	1.000

Season High	Career High
10, at North Dakota State, 1/7/2017	Pts ... 10, at North Dakota State, 1/7/2017
7, vs Denver, 1/12/2017	Reb ... 7, vs Denver, 1/12/2017
1, three times	Ast ... 1, three times
3, at North Dakota State, 1/7/2017	Stl ... 3, at North Dakota State, 1/7/2017
1, at North Dakota State, 1/7/2017	Blk ... 1, at North Dakota State, 1/7/2017
5, at North Dakota State, 1/7/2017	FG ... 5, at North Dakota State, 1/7/2017
4, at South Dakota, 1/18/2017	3PT ... 4, at South Dakota, 1/18/2017
	FT ... 4, at South Dakota, 1/18/2017

Career Notes
10-point games ..... 1
5-point games ..... 4
5-rebound games ..... 1
3-steal games ..... 1



# 2 • NIA THOMAS • (KNEE-uh) • G • Fr. • 5-8 • Liberty Township, Ohio • Lakota East

Season	GP	GS	MPG	Pts	PPG	RPG	Ast	Blk	Stl	FG%	3FG%	FT%
	11	0	4.7	12	1.1	0.82	1	0	1	.333	.500	.750
Career	GP	GS	MPG	Pts	PPG	RPG	Ast	Blk	Stl	FG%	3FG%	FT%
	11	0	4.7	12	1.1	0.82	1	0	1	.333	.500	.750

Season High	Career High
6, at Kent State, 11/30/2016	Pts ..... 6, at Kent State, 11/30/2016
3, two times	Reb ..... 3, two times
1, vs Miami (Ohio), 12/19/2016	Ast ..... 1, vs Miami (Ohio), 12/19/2016
1, at Illinois, 12/2/2016	Stl ..... 1, at Illinois, 12/2/2016
	Blk ..... 1, at Illinois, 12/2/2016
2, at Kent State, 11/30/2016	FG ..... 2, at Kent State, 11/30/2016
1, at Kent State, 11/30/2016	3PT ..... 1, at Kent State, 11/30/2016
2, vs Miami (Ohio), 12/19/2016	FT ..... 2, vs Miami (Ohio), 12/19/2016

Career Notes
5-point games ..... 1



# 3 • KeSHYRA McCARVER • (Key-Shy-Ruh) • F • Jr. • 5-10 • Toledo, Ohio • Whitmer

Season	GP	GS	MPG	Pts	PPG	RPG	Ast	Blk	Stl	FG%	3FG%	FT%
	18	16	22.6	107	5.9	3.89	13	3	14	.339	.310	.774
Career	GP	GS	MPG	Pts	PPG	RPG	Ast	Blk	Stl	FG%	3FG%	FT%
	77	39	19.2	402	5.2	3.32	64	10	47	.329	.312	.725

Season High	Career High
12, two times	Pts ..... 22, at Illinois, 11/14/2014
8, vs DePaul, 11/12/2016	Reb ..... 14, at Illinois, 11/14/2014
2, at UIC, 12/10/2016	Ast ..... 4, at Western Illinois, 1/31/2015
3, vs DePaul, 11/12/2016	Stl ..... 3, four times
1, three times	Blk ..... 2, at Omaha, 2/11/2016
5, two times	FG ..... 7, vs USC Upstate, 11/21/2015
2, two times	3PT ..... 4, vs Grace, 11/18/2014
6, vs Eastern Kentucky, 12/21/2016	FT ..... 11, at Illinois, 11/14/2014

Career Notes
Double-Double ..... 1
20-point games ..... 3
10-point games ..... 9
10-rebound games ..... 1
5-rebound games ..... 21
3-steal games ..... 4
3-three's games ..... 2



# 5 • HANNAH HESS • G • Fr. • 5-9 • Oregon, Ohio • Clay

Season	GP	GS	MPG	Pts	PPG	RPG	Ast	Blk	Stl	FG%	3FG%	FT%
Has Yet to Appear												
Career	GP	GS	MPG	Pts	PPG	RPG	Ast	Blk	Stl	FG%	3FG%	FT%
Has Yet to Appear												

Season High	Career High
	Pts
	Reb
	Ast
	Stl
	Blk
	FG
	3PT
	FT

Career Notes
--------------



# 12 • ANNA LAPPENKÜPER • (AHH-nuh LAH-pen-cooper) • G • Fr. • 5-8 • Herne, Germany • Otto Hahn Gymnasium

Season	GP	GS	MPG	Pts	PPG	RPG	Ast	Blk	Stl	FG%	3FG%	FT%
	21	16	29.5	137	6.5	2.57	31	2	17	.369	.268	.818
Career	GP	GS	MPG	Pts	PPG	RPG	Ast	Blk	Stl	FG%	3FG%	FT%
	21	16	29.5	137	6.5	2.57	31	2	17	.369	.268	.818

Season High	Career High
13, vs Western Illinois, 12/28/2016	Pts ..... 13, vs Western Illinois, 12/28/2016
5, two times	Reb ..... 5, two times
5, two times	Ast ..... 5, two times
3, at North Dakota State, 1/7/2017	Stl ..... 3, at North Dakota State, 1/7/2017
1, two times	Blk ..... 1, two times
5, two times	FG ..... 5, two times
3, vs Western Illinois, 12/28/2016	3PT ..... 3, vs Western Illinois, 12/28/2016
7, at Oral Roberts, 12/31/2016	FT ..... 7, at Oral Roberts, 12/31/2016

Career Notes
10-point games ..... 6
5-point games ..... 14
5-rebound games ..... 2
5-assist games ..... 2
3-three's games ..... 1
3-steal games ..... 1



# 13 • De'JOUR YOUNG • (D-zhur) • G • So. • 5-7 • Fort Wayne, Ind. • Concordia Lutheran

Season	GP	GS	MPG	Pts	PPG	RPG	Ast	Blk	Stl	FG%	3FG%	FT%
	21	21	30.8	268	12.8	4.95	42	2	18	.422	.222	.882
Career	GP	GS	MPG	Pts	PPG	RPG	Ast	Blk	Stl	FG%	3FG%	FT%
	51	42	26.2	471	9.2	4.14	76	10	51	.417	.274	.793

Season High	Career High
21, vs Oakland, 11/19/2016	Pts ..... 21, vs Oakland, 11/19/2016
11, vs Denver, 1/12/2017	Reb ..... 11, vs Denver, 1/12/2017
5, three times	Ast ..... 5, three times
5, at Omaha, 1/25/2017	Stl ..... 5, vs Grace, 11/16/2015
1, two times	Blk ..... 2, two times
7, five times	FG ..... 7, five times
3, vs Oakland, 11/19/2016	3PT ..... 3, vs Oakland, 11/19/2016
8, vs Oakland, 11/19/2016	FT ..... 8, vs Oakland, 11/19/2016

Career Notes
Double-Double ..... 1
20-point games ..... 2
10-point games ..... 20
10-rebound games ..... 2
5-assist games ..... 3
3-steal games ..... 6
5-5 games ..... 3



# 15 • SELENA LOZADA • (Lo-zaah-Duh) • F • Sr. • 6-2 • Perth Amboy, N.J. • Western Guilford

Season	GP	GS	MPG	Pts	PPG	RPG	Ast	Blk	Stl	FG%	3FG%	FT%
	19	15	23.0	115	6.1	4.26	9	14	10	.372	.000	.625
Career	GP	GS	MPG	Pts	PPG	RPG	Ast	Blk	Stl	FG%	3FG%	FT%
	44	21	15.6	175	4.0	2.75	11	18	15	.344	.000	.566

Season High	Career High
12, two times	Pts ..... 13, vs Trine, 11/16/2015
9, at Oral Roberts, 1/21/2017	Reb ..... 9, vs Oral Roberts, 1/21/2017
3, vs Eastern Kentucky, 12/21/2016	Ast ..... 3, vs Eastern Kentucky, 12/21/2016
1, nine times	Stl ..... 2, two times
3, vs Western Illinois, 12/28/2016	Blk ..... 3, vs Western Illinois, 12/28/2016
6, two times	FG ..... 6, two times
	3PT
4, at Kent State, 11/30/2016	FT ..... 7, vs Trine, 11/16/2015

Career Notes
10-point games ..... 4
5-point games ..... 17
5-rebound games ..... 11



# 21 • ISIS PARKER • F • So. • 6-0 • Cleveland, Ohio • Solon

Season	GP	GS	MPG	Pts	PPG	RPG	Ast	Blk	Stl	FG%	3FG%	FT%
	20	1	16.5	70	3.5	2.15	4	6	7	.300	.000	.593
Career	GP	GS	MPG	Pts	PPG	RPG	Ast	Blk	Stl	FG%	3FG%	FT%
	45	2	12.1	112	2.5	1.73	4	9	12	.316	.000	.650

Season High	Career High
9, two times	Pts ..... 9, four times
5, three times	Reb ..... 6, at Northern Kentucky, 12/5/2015
2, vs Miami (Ohio), 12/19/2016	Ast ..... 2, vs Miami (Ohio), 12/19/2016
2, two times	Stl ..... 2, two times
1, six times	Blk ..... 1, nine times
4, at UIC, 12/10/2016	FG ..... 4, two times
	3PT
3, two times	FT ..... 7, at Northern Kentucky, 12/5/2015

Career Notes
5-point games ..... 12
5-rebound games ..... 5

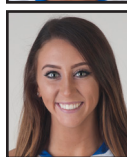


# 22 • ZARIA ATKINS • G • Fr. • 5-7 • Dudley, N.C. • Southern Wayne

Season	GP	GS	MPG	Pts	PPG	RPG	Ast	Blk	Stl	FG%	3FG%	FT%
	21	15	28.6	184	8.8	2.14	44	0	21	.367	.340	.870
Career	GP	GS	MPG	Pts	PPG	RPG	Ast	Blk	Stl	FG%	3FG%	FT%
	21	15	28.6	184	8.8	2.14	44	0	21	.367	.340	.870

Season High	Career High
18, vs Eastern Kentucky, 12/21/2016	Pts ..... 18, vs Eastern Kentucky, 12/21/2016
7, vs Miami (Ohio), 12/19/2016	Reb ..... 7, vs Miami (Ohio), 12/19/2016
6, vs Omaha, 1/25/2017	Ast ..... 6, vs Omaha, 1/25/2017
3, two times	Stl ..... 3, two times
	Blk
6, at North Dakota State, 1/7/2017	FG ..... 6, at North Dakota State, 1/7/2017
3, vs Omaha, 1/25/2017	3PT ..... 3, vs Omaha, 1/25/2017
9, vs Eastern Kentucky, 12/21/2016	FT ..... 9, vs Eastern Kentucky, 12/21/2016

Career Notes
10-point games ..... 9
5-point games ..... 15
5-rebound games ..... 3
5-assist games ..... 2
3-steal games ..... 2



# 23 • PEYTON FALLIS • (Fau-liss) • G • So. • 5-10 • Indianapolis, Ind. • Heritage Christian

Season	GP	GS	MPG	Pts	PPG	RPG	Ast	Blk	Stl	FG%	3FG%	FT%
	12	1	18.8	55	4.6	1.67	9	1	6	.290	.200	.769
Career	GP	GS	MPG	Pts	PPG	RPG	Ast	Blk	Stl	FG%	3FG%	FT%
	40	2	15.9	153	3.8	1.88	32	3	29	.259	.203	.660

Season High	Career High
22, at Butler, 11/16/2016	Pts ..... 22, at Butler, 11/16/2016
5, at Western Michigan, 12/6/2016	Reb ..... 5, three times
2, three times	Ast ..... 3, two times
1, vs Trine, 11/14/2016	Stl ..... 3, two times
1, vs Western Illinois, 12/28/2016	Blk ..... 1, three times
7, at Butler, 11/16/2016	FG ..... 7, at Butler, 11/16/2016
4, at Butler, 11/16/2016	3PT ..... 4, at Butler, 11/16/2016
5, at Illinois, 12/2/2016	FT ..... 5, at Illinois, 12/2/2016

Career Notes
20-point games ..... 1
10-point games ..... 4
5-point games ..... 15
5-rebound games ..... 3
3-steal games ..... 1
3-three's games ..... 3
Games with a 3 ..... 10



# 31 • RACHEL RINEHART • G • Sr. • 5-8 • Angola, Ind. • Angola

Season	GP	GS	MPG	Pts	PPG	RPG	Ast	Blk	Stl	FG%	3FG%	FT%
	21	20	28.1	186	8.9	3.95	53	1	38	.474	.226	.795
Career	GP	GS	MPG	Pts	PPG	RPG	Ast	Blk	Stl	FG%	3FG%	FT%
	111	72	22.8	802	7.2	3.32	256	9	149	.415	.288	.708

Season High	Career High
21, vs Oral Roberts, 1/21/2017	Pts ..... 31, vs Western Illinois, 12/2/2016
10, at Illinois, 12/2/2016	Reb ..... 10, at Illinois, 12/2/2016
6, vs Trine, 11/14/2016	Ast ..... 8, two times
6, vs Oral Roberts, 1/21/2017	Stl ..... 6, two times
1, at North Dakota State, 1/7/2017	Blk ..... 2, at Oral Roberts, 2/28/2014
10, vs Oral Roberts, 1/21/2017	FG ..... 12, vs Western Illinois, 12/2/2016
2, vs Eastern Kentucky, 12/21/2016	3PT ..... 3, two times
8, at UIC, 12/10/2016	FT ..... 8, three times

Career Notes
30-point games ..... 1
20-point games ..... 5
10-point games ..... 35
5-assist games ..... 16
3-steal games ..... 15
5-5-5 games ..... 6
3-three's games ..... 2



## NIECEE (KNEE-see) NELSON

Head Coach - 1st Year  
Concordia Portland '02



## TY SHAW

Assistant Coach  
Albertson '02



## MARCIE ALBERTS

Assistant Coach  
Ohio State '97



## CAROL DUNCAN

Assistant Coach  
Purdue '06



## HALEY SEIBERT

GA Coach  
IPFW '15