

# FORT WAYNE

# WOMEN'S BASKETBALL



## FORT WAYNE MASTODONS

3-16, 0-6 SUMMIT LEAGUE

## AT ORAL ROBERTS GOLDEN EAGLES

10-9, 2-4 SUMMIT LEAGUE



### NOVEMBER (1-6)

11/6	INDIANA TECH (EXHIBITION)	W, 78-46
11/11	BELMONT	L, 85-59
11/12	DEFIANCE	W, 76-58
11/14	TRINE	L, 80-71
11/16	at Butler	L, 70-64
11/19	OAKLAND	L, 82-61
11/26	COASTAL CAROLINA	L, 72-57
11/30	at Kent State	L, 66-55

### DECEMBER (2-6)

12/2	at Illinois	L, 56-33
12/6	at Western Michigan	L, 61-35
12/10	at UIC	W, 61-55
<b>WRIGHT STATE INVITATIONAL (DEC. 19-21)</b>		
12/19	vs. Miami (Ohio)	L, 69-47
12/20	at Wright State	L, 62-51
12/21	vs. Eastern Kentucky	W, 69-58
12/28	WESTERN ILLINOIS •	L, 75-53
12/31	at Oral Roberts •	L, 82-56

### JANUARY (0-4)

1/5	at South Dakota State •	L, 73-51
1/7	at North Dakota State •	L, 68-56
1/12	DENVER •	L, 78-72
1/18	at South Dakota •	L, 87-59
1/21	ORAL ROBERTS •	2 P.M.
1/25	OMAHA • (PINK OUT)	5 P.M.
1/28	IUPUI •	2 P.M.

### FEBRUARY (0-0)

2/4	at Denver •	3 P.M.
2/9	SOUTH DAKOTA •	6 P.M.
2/11	NORTH DAKOTA STATE •	3 P.M.
2/15	at Omaha •	8 P.M.
2/18	SOUTH DAKOTA STATE •	4 P.M.
2/22	at Western Illinois •	8 P.M.
2/25	at IUPUI •	3 P.M.

### MARCH (0-0)

<b>SUMMIT LEAGUE TOURNAMENT (Feb. 4-7)</b>		
4-5	Quarterfinals	TBD
6	Semifinals	TBD
7	Championship	TBD

• Summit League Games

**CAPS/BOLD = Home Games | All Times Eastern**

## FORT WAYNE REFERENCES

As a part of the Fort Wayne athletic department's rebranding effort that began in 2016, we respectfully ask to refer to any athletic-related subjects as "Fort Wayne" or the "Fort Wayne Mastodons." Please refer to the school as "IPFW" or "Indiana University - Purdue University Fort Wayne". "IPFW" is not acceptable when referring to the athletic teams. References of "Fort Wayne University" or "University of Fort Wayne" **ARE NOT ACCEPTABLE IN ANY CONTEXT.** Please do not use "Lady 'Dons" when referring to women's teams.



### LAST GAME:

L, 87-59 at South Dakota (Jan. 18)

### COACH:

Niece Nelson | 1st Season

### SCORING LEADER:

De'Jour Young | 12.4 ppg

### REBOUNDING LEADER:

De'Jour Young | 4.9 rpg

### ASSIST LEADER:

Rachel Rinehart | 2.6 apg

### STEAL LEADER:

Rachel Rinehart | 1.5 spg

### BLOCK LEADER:

Selena Lozada | 0.8 bpg

### TALE OF THE TAPE

CATEGORY	FORT WAYNE	ORU
POINTS SCORED	57.1	67.1
POINTS ALLOWED	70.4	61.0
FG PCT.	.377	.405
OPP. FG PCT.	.470	.382
3-POINT PCT.	.269	.318
OPP. 3-POINT PCT.	.401	.386
FREE THROW PCT.	.790	.687
REBOUNDS	31.2	38.1
REBOUND MARGIN	-3.5	-0.7
ASSISTS	9.6	11.5
TURNOVERS	17.2	14.2
STEALS	6.3	9.0
BLOCKED SHOTS	1.7	2.4

### LAST GAME:

L, 53-41 at IUPUI (Jan. 19)

### COACH:

Misti Cussen | 5th Season

### SCORING LEADER:

Faith Ihim | 13.7 ppg

### REBOUNDING LEADER:

Faith Ihim | 7.8 rpg

### ASSIST LEADER:

Kaylan Mayberry | 2.6 apg

### STEAL LEADER:

Maria Martinez | 1.9 spg

### BLOCK LEADER:

Maria Martinez | 1.2 bpg

## GAMEDAY INFORMATION

**WHEN:** Saturday, January 21 | 2 p.m.

**WHERE:** Fort Wayne, Ind. | Gates Sports Center (1,800)

**LIVE VIDEO:** Fort Wayne Sidarm All-Access

**LIVE AUDIO:** Fort Wayne Stretch Internet | Mike Maahs, play-by-play

**LIVE STATS:** Fort Wayne Sidarm Live Stats

**SERIES HISTORY:** Oral Roberts leads 11-5

**LAST MEETING:** Oral Roberts won 82-56 | December 31, 2016 | Tulsa, Okla.

## MASTODON PROBABLE STARTERS (SUBJECT TO CHANGE)



### Anna Lappenküper

5-8 Fr.

Herne, Germany / Otto Hahn Gymnasium

GP	GS	PPG	RPG	Ast	FG%	3FG%	FT%
19	14	6.4	2.47	26	.366	.275	.818



### De'Jour Young

5-7 So.

Fort Wayne, Ind. / Concordia Lutheran

GP	GS	PPG	RPG	Ast	FG%	3FG%	FT%
19	19	12.4	4.89	37	.432	.208	.885



### Selena Lozada

6-2 Sr.

Perth Amboy, N.J. / Western Guilford / Guilford Technical CC

GP	GS	PPG	RPG	Ast	FG%	3FG%	FT%
17	13	5.8	4.18	6	.362	.000	.629



### Zaria Atkins

5-7 Fr.

Dudley, N.C. / Southern Wayne

GP	GS	PPG	RPG	Ast	FG%	3FG%	FT%
19	13	8.7	2.37	34	.371	.342	.857



### Rachel Rinehart

5-8 Sr.

Angola, Ind. / Angola

GP	GS	PPG	RPG	Ast	FG%	3FG%	FT%
19	18	7.9	3.95	49	.452	.233	.811

## ORAL ROBERTS PROBABLE STARTERS (SUBJECT TO CHANGE)

#	Name	Ht.	Cl.	Hometown	PPG	RPG	APG	FG%	3FG%	FT%
1	G Kaylan Mayberry	5-6	Sr.	Tulsa, Okla.	10.9	2.6	2.6	.351	.357	.667
11	G Lakota Beatty	5-8	R-Jr.	Anadarko, Okla.	12.4	3.2	1.5	.425	.438	.786
15	F Faith Ihim	5-10	Jr.	Tulsa, Okla.	13.7	7.8	0.5	.561	.000	.519
22	G Jordan Gilbert	5-10	So.	Midwest City, Okla.	5.4	4.9	1.5	.339	.200	.656
44	F Maria Martinez	6-3	So.	Barcelona, Spain	11.4	7.0	2.1	.413	.118	.776

## 2016-17 SUMMIT LEAGUE STANDINGS

(as of 1/20/2016)

Team	Summit				Overall					
	Rec.	Pct.	PF	PA	Rec.	Pct.	PF	PA	Last 10	Strk.
South Dakota	6-1	0.857	499	429	17-3	0.850	1499	1285	9-1	Won 4
South Dakota State	6-1	0.857	498	415	15-4	0.789	1311	1131	8-2	Won 5
Western Illinois	5-1	0.833	478	408	15-4	0.789	1551	1245	9-1	Won 4
IUPUI	3-3	0.500	345	349	13-6	0.684	1276	1099	6-4	Won 2
North Dakota State	3-3	0.500	444	468	5-14	0.263	1272	1422	4-6	Lost 2
Oral Roberts	2-4	0.333	366	397	10-9	0.526	1275	1223	5-5	Lost 4
Omaha	2-4	0.333	399	385	9-10	0.474	1308	1185	5-5	Won 1
Denver	1-5	0.167	396	458	4-15	0.211	1227	1356	1-9	Lost 2
Fort Wayne	0-6	0.000	347	463	3-16	0.158	1085	1338	2-8	Lost 6

## 2016-17 SUMMIT LEAGUE PLAYERS OF THE WEEK

Date	Player	Pos.	School	Jan. 30
Nov. 14	Allison Arens	G	South Dakota	Feb. 6
Nov. 21	Macy Miller	G	South Dakota State	Feb. 14
	Emily Clemens	G	Western Illinois	Feb. 20
Nov. 29	Emily Clemens	G	Western Illinois	Feb. 27
Dec. 5	Mikale Rogers	C	IUPUI	
	Maria Martianez	F	Oral Roberts	
Dec. 12	Jaycee Bradley	G	South Dakota	
	Emily Clemens	G	Western Illinois	
Dec. 19	Mikaela Shaw	G	Omaha	
Dec. 26	Mikale Rogers	C	IUPUI	
Jan. 2	Allison Arens	G	South Dakota	
Jan. 9	Taylor Higginbotham	G	Western Illinois	
Jan. 17	Morgan Blumer	G	Western Illinois	
Jan. 23				

## SUMMIT LEAGUE COMPOSITE SCHEDULE

### Wednesday, December 28

Ind.-Northwest 36, IUPUI 89  
 Denver 64, South Dakota 70  
 South Dakota State 69, North Dakota State 66  
 Oral Roberts 67, Omaha 65

### Saturday, December 31

North Dakota State 86, Denver 80  
 South Dakota State 62, South Dakota 65  
 Western Illinois 52, IUPUI 66

### Sunday, January 1

York (Neb.) 37, Omaha 106

### Wednesday, January 4

South Dakota 73, North Dakota State 83

### Thursday, January 5

IUPUI 44, Omaha 64  
 Denver 62, Western Illinois 87

### Saturday, January 7

IUPUI 62, South Dakota 75  
 Omaha 64, South Dakota State 76  
 Oral Roberts 72, Western Illinois 76

### Wednesday, January 11

IUPUI 49, South Dakota State 68  
 Western Illinois 78, Omaha 74  
 South Dakota 69, Oral Roberts 47

### Saturday, January 14

South Dakota State 78, Oral Roberts 57  
 Denver 71, IUPUI 49  
 South Dakota 60, Omaha 52  
 North Dakota State 81, Western Illinois 110

### Wednesday, January 18

Omaha 80, North Dakota State 60  
 South Dakota State 72, Denver 63

### Thursday, January 19

Oral Roberts 41, IUPUI 53

### Saturday, January 21

Western Illinois at South Dakota State 3 P.M.  
 Omaha at Denver 3 P.M.  
 North Dakota State at IUPUI 7 P.M.

### Wednesday, January 25

IUPUI at Western Illinois 8 P.M.  
 Denver at Oral Roberts 8 P.M.

### Thursday, January 26

North Dakota State at South Dakota 8 P.M.

### Saturday, January 28

Western Illinois at South Dakota 2 P.M.  
 South Dakota State at Omaha 3 P.M.  
 Oral Roberts at North Dakota State 3 P.M.

### Wednesday, February 1

Western Illinois at Oral Roberts 8 P.M.  
 South Dakota at Denver 9 P.M.

### Thursday, February 2

Omaha at IUPUI 7 P.M.  
 North Dakota State at South Dakota State 8 P.M.

### Saturday, February 4

IUPUI at Oral Roberts 1:30 P.M.  
 South Dakota at South Dakota State 3 P.M.  
 Omaha at Western Illinois 5:30 P.M.

### Wednesday, February 8,

Western Illinois at North Dakota State 6 P.M.  
 Oral Roberts at South Dakota State 8 P.M.  
 IUPUI at Denver 9 P.M.

### Saturday, February 11

Omaha at Oral Roberts 1:30 P.M.  
 South Dakota State at IUPUI 3 P.M.  
 Western Illinois at Denver 3 P.M.

### Wednesday, February 15

South Dakota State at Western Illinois 8 P.M.  
 Denver at North Dakota State 8 P.M.  
 Oral Roberts at South Dakota 8 P.M.

### Saturday, February 18

Omaha at South Dakota 2 P.M.  
 IUPUI at North Dakota State 2 P.M.

### Sunday, February 19

Oral Roberts at Denver 1 P.M.

### Wednesday, February 22

South Dakota at IUPUI 7 P.M.  
 North Dakota State at Omaha 8 P.M.

### Thursday, February 23

Denver at South Dakota State 8 P.M.

### Saturday, February 25

North Dakota State at Oral Roberts 1:30 P.M.  
 Denver at Omaha 3 P.M.  
 South Dakota at Western Illinois 5:30 P.M.

## FORT WAYNE AT A GLANCE

### GENERAL INFO

Address	2101 E. Coliseum Blvd.
City/Zip	Fort Wayne, IN / 46805
Founded	1964
Enrollment	13,459
Nickname	Mastodons
Colors	Royal Blue and White
Affiliation	NCAA Division I
Conference	The Summit League
Chancellor	Vicky Carwein
Athletic Director	Kelley Hartley Hutton

### MEDIA SERVICES

Asst. Director / WBB Contact	Brian Alden
E-mail	aldenbs@ipfw.edu
Office Phone	(260) 481-6646
Cell Phone	(859) 468-8963
Office Fax	(260) 481-6002

### COACHING STAFF

Head Coach	Niecee Nelson
Alma Mater 'Yr.	Concordia Portland '02
Record at School/Yrs.	3-16 / 1st
Career Record/Yrs.	Same
Assistant Coach	Ty Shaw (1st season)
Alma Mater 'Yr.	Albertson '02
Assistant Coach	Marcie Alberts (4th season)
Alma Mater 'Yr.	Ohio State '97
Assistant Coach	Carol Duncan (1st season)
Alma Mater 'Yr.	Purdue '06
Graduate Assistant Coach	Haley Seibert (2nd season)
Alma Mater 'Yr.	IPFW '15

### SEASON IN REVIEW

2015-16 Overall Record	7-23
2015-16 Summit Record/Finish	3-13 / 7th
Letterwinners Returning/Lost	6 / 6
Starters Returning/Lost	3 / 2

### HISTORY

First Year of Basketball	1976-77
First Year of NCAA Division I Basketball	2001-02
First Year in The Summit League	2007-08
All-Time Record	460-616
All-Time Division I Record	153-299
All-Time Summit League Record	68-90
All-time NCAA Tournament Record	0-3
Years in Post-Season play	12
Last Post-Season Game	2013-14 (WBI)
Result	L, 84-71 at UIC

First Varsity Game	12/9/76 at Huntington; L, 41-38
500th Game	1/9/97 at Saint Joseph's (IN); W, 73-61
750th Game	1/25/06 vs. Butler; L, 70-60
1,000th Game	3/19/14 at UIC; L, 84-71

First Program Victory	12/11/76 vs. Grace; W, 72-31
250th Program Victory	2/10/96 at Kentucky Wesleyan; W, 91-76

FORT WAYNE MASTODONS ROSTER

No.	Name	Ht.	Pos.	Cl.	Hometown	High School / Previous School
1	Yuleska Ramirez-Tejeda ( <i>YOU-less-kuh</i> )	5-7	G	Fr.	Cambridge, Mass.	Cambridge Rindge and Latin
2	Nia Thomas ( <i>KNEE-uh</i> )	5-8	G	So.	Liberty Township, Ohio	Lakota East / Lincoln Trail College
3	KeShyra McCarver ( <i>Key-SHY-Ruh</i> )	5-10	F	Jr.	Toledo, Ohio	Whitmer
5	Hannah Hess	5-9	G	Fr.	Oregon, Ohio	Clay
12	Anna Lappenküper ( <i>AHH-nuh LAH-pen-cooper</i> )	5-8	G	Fr.	Herne, Germany	Otto Hahn Gymnasium
13	De'Jour Young ( <i>D-zhur</i> )	5-7	G	So.	Fort Wayne, Ind.	Concordia Lutheran
15	Selena Lozada ( <i>Lo-zaah-duh</i> )	6-2	F	Sr.	Perth Amboy, N.J.	Western Guilford / Guilford Technical CC
21	Isis Parker	6-0	F	So.	Cleveland, Ohio	Solon
22	Zaria Atkins	5-7	G	Fr.	Dudley, N.C.	Southern Wayne
23	Peyton Fallis ( <i>Fau-liss</i> )	5-10	G	So.	Indianapolis, Ind.	Heritage Christian
31	Rachel Rinehart	5-8	G	Sr.	Angola, Ind.	Angola

<b>Head Coach:</b> Niecee Nelson ( <i>KNEE-see</i> )
<b>Assistant Coaches:</b> Marcie Alberts, Carol Duncan and Ty Shaw
<b>Graduate Assistant Coach:</b> Haley Seibert ( <i>sigh-BERT</i> )

ORAL ROBERTS GOLDEN EAGLES ROSTER

No.	Name	Ht.	Pos.	Cl.	Hometown	High School / Previous School
1	Kaylan Mayberry ( <i>Kay-lan May-berry</i> )	G	Sr.	5-6	Tulsa, Okla.	Booker T. Washington
2	Jordan Doyle	G	Jr.	5-6	Broken Arrow, Okla.	Broken Arrow
3	Maria Marti ( <i>Mar-tee</i> )	F	Fr.	6-3	Banyoles, Spain	Instituto Joaquim Blume
4	Hillary Hurst	G	Fr.	5-11	Woodward, Okla.	Woodward
10	Alexa Scott	F	Fr.	5-10	Norman, Okla.	Norman North
11	Lakota Beatty ( <i>Bay-tee</i> )	G	R-Jr.	5-8	Anadarko, Okla.	Anadarko / Oklahoma State
12	Dorotyya Balla ( <i>Dor-AH-tee-uh BALL-uh</i> )	F	Sr.	6-0	Pecs, Hungary	PTE Babits Mihaly
13	Rachel Skalnik ( <i>Sk-AL-nick</i> )	G	Fr.	5-8	Owasso, Okla.	Owasso
15	Faith Ihim ( <i>Eye-Him</i> )	F	Jr.	5-10	Tulsa, Okla.	Memorial
22	Jordan Gilbert	G	R-So.	5-10	Midwest City, Okla.	Carl Albert
23	Ashley Beatty ( <i>Bay-tee</i> )	G	So.	5-8	Anadarko, Okla.	Anadarko
24	Montserrat Brotons ( <i>Mont-ser-AHT Br-uh-tahns</i> )	C	Fr.	6-4	Concentaina, Spain	Instituto Joaquim Blume
32	Holly Golden	G	Fr.	5-8	Fort Myers, Fla.	Evangelical Christian
44	Maria Martiane <span>z</span> ( <i>Mart-EE-ON-yez</i> )	F	So.	6-3	Barcelona, Spain	Instituto Joaquim Blume

<b>Head Coach:</b> Misti Cussen ( <i>CUZ-en</i> )
<b>Assistant Coaches:</b> Kyron Stokes, Janae Voelker and Chris Wallace

All-Time Results vs. Oral Roberts

1/14/2008	H	ORAL ROBERTS	L, 62-81	Fort Wayne, Ind.
2/9/2008	A	Oral Roberts	L, 71-88	Tulsa, Okla.
3/9/2008	N	Oral Roberts	L, 67-82	Tulsa, Okla.
1/12/2009	A	Oral Roberts	L, 71-78	Tulsa, Okla.
2/7/2009	H	ORAL ROBERTS	W, 67-64	Fort Wayne, Ind.
1/9/2010	A	Oral Roberts	W, 74-72	Tula, Okla.
2/8/2010	H	ORAL ROBERTS	W, 96-83	Fort Wayne, Ind.
12/29/2010	A	Oral Roberts	L, 78-91	Tulsa, Okla.
1/29/2011	H	ORAL ROBERTS	L, 74-76	Fort Wayne, Ind.
1/23/2012	A	Oral Roberts	L, 62-102	Tulsa, Okla.
2/18/2012	H	ORAL ROBERTS	L, 61-62 (OT)	Fort Wayne, Ind.
1/11/2015	H	ORAL ROBERTS	W, 73-63	Fort Wayne, Ind.
2/28/2015	A	Oral Roberts	L, 56-84	Tulsa, Okla.
1/16/2016	A	Oral Roberts	L, 59-61	Tulsa, Okla.
2/17/2016	H	ORAL ROBERTS	W, 54-48	Fort Wayne, Ind.
12/31/2016	A	Oral Roberts	L, 56-82	Tulsa, Okla.

Overall: 5-11  
League: 5-10  
Home: 4-3  
Away: 1-7  
Neutral: 0-1

ON THIS DATE...

JANUARY 21 (4-8)		
2016	AT SOUTH DAKOTA	L, 60-92
2012	AT SOUTHERN UTAH	L, 68-80
2006	AT NORTH DAKOTA STATE	L, 68-79
1999	BELLARMINE	L, 62-68
1995	AT LEWIS	W, 101-78
1993	BELLARMINE	L, 61-64
1989	AT LEWIS	L, 72-78
1988	KENTUCKY WESLEYAN	L, 71-78
1986	AT HUNTINGTON	W, 57-49
1984	OHIO NORTHERN	W, 79-77
1983	BETHEL (IN)	W, 95-32
1977	AT NOTRE DAME	L, 44-52

ALL-TIME IN JANUARY...

BY DAY AND LOCATION	
Sunday	2-4
Monday	17-20
Tuesday	8-17
Wednesday	10-15
Thursday	37-48
Friday	2-12
Saturday	57-88
Home	82-92
Away	52-107
Neutral	0-4

ALL-TIME RECORD...

BY DAY OF THE WEEK	
Sunday	14-41
Monday	36-52
Tuesday	45-59
Wednesday	36-47
Thursday	104-124
Friday	32-52
Saturday	189-240

ALL-TIME RECORD...

BY MONTH	
November	60-84
December	110-141
January	134-202
February	139-161
March	17-29

Fort Wayne vs.

SUMMIT LEAGUE	All-Time	Under Nelson
Denver	3-5	0-1
IUPUI	12-17	0-0
North Dakota State	8-16	0-1
Omaha	4-4	0-0
Oral Roberts	5-11	0-1
South Dakota	3-9	0-1
South Dakota State	1-28	0-1
Western Illinois	10-10	0-1
TOTALS	46-103	0-6

HEAD COACH NIECEE NELSON

Niecee Nelson was appointed as Fort Wayne's women's basketball head coach on April 18, 2016. An assistant coach at the University of San Diego for 11 seasons, she is the 14th head coach in the 40-year history of the program. Nelson is no stranger to Fort Wayne, however, having served as an assistant coach for the Mastodons for one season during 2004-05, after getting her start in coaching as a graduate assistant at the University of Wyoming for two seasons (2002-04).

Nelson helped lead San Diego to an overall record of 222-124 since 2005, including five consecutive 20-win seasons and postseason WNIT appearances. The Toreros, under the direction of head coach Cindy Fisher, made one NCAA Tournament appearance since '05, winning the WCC Tournament in 2008, and have made six overall appearances in the WNIT, first advancing to the event in 2007. USD was 25-8 in 2015-16, tying for the second-most wins in program history while advancing to the third round of the WNIT.

Nelson's on court responsibilities at USD included point guard and shooting guard development, while serving as the program's offensive coordinator. She has helped develop 13 All-WCC First Team guards, including Dominique Conners, a three-time honoree and USD's all-time leader in points and steals. Nelson also helped develop Amanda Rego, the program's only WCC Player of the Year (2006-07), who was the national assist leader that season, and is the school's career leader in assists.

Nelson's off court responsibilities at USD included serving as the program's academic coordinator, budget management and ordering of team equipment, including uniforms and apparel, as well as managing team travel. Additionally, she shared in the duties of recruiting as well as the opponent scouting and game strategy. Nelson has also assisted in creating practice plans and individual workouts.

Nelson was an assistant at Fort Wayne during 2004-05, with primary responsibilities in team travel, post player development, marketing and academic support. Within two months of arriving at Fort Wayne, she was promoted to recruiting coordinator, leading the charge in overseas recruiting into Brazil and Europe.

Prior to Fort Wayne, Nelson served as a graduate assistant at Wyoming with Coach Fisher. She worked closely with the staff and team on practice and game day coaching, individual workouts, academic support, film exchange, and guard and post development.

Nelson earned 2001 NAIA All-America honors at Concordia University in Portland, Oregon. A two-time team captain, she was named to the 2001 Lutheran Brotherhood All-America Team. Nelson was a two-time All-Cascade Conference First Team selection (2001, 2002), and the 1998 Cascade Conference Freshman of the Year.

Nelson graduated from Concordia in 2002 with a Bachelor of Arts degree in Education with an emphasis in Elementary Education, adding minors in Business Marketing and Psychology. She earned a Master of Science degree in Kinesiology and Health with an emphasis in Health Promotion from Wyoming in 2004.

Niecee and her husband, Steve, have two children: son Sebastian and daughter Skyler.

FORT WAYNE IN SUMMIT LEAGUE AND NCAA STATISTICS

TEAM	(of 345)		(of 9)
	Statistic	NCAA	Summit
Assist Turnover Ratio	0.56	315	9
Assists	182	301	9
Assists Per Game	9.6	331	9
Blocked Shots	33	314	9
Blocked Shots Per Game	1.7	326	9
Fewest Fouls	371	316	9
Fewest Turnovers	327	285	9
Field-Goal Percentage	37.8	251	9
Field-Goal Percentage Defense	47	342	9
Free Throw Attempts	310	171	7
Free Throws Made	245	65	3
Free-Throw Percentage	79	7	2
Personal Fouls Per Game	19.5	273	9
Rebound Margin	-3.5	268	8
Rebounds	592	299	9
Rebounds Per Game	31.16	340	9
Scoring Defense	70.4	289	7
Scoring Margin	-13.3	318	9
Scoring Offense	57.1	301	9
Steals	119	253	7
Steals Per Game	6.3	291	7
Three Pt FG Defense	40.1	344	9
Three-Point Field Goals Made	64	316	9
Three-Point Field Goals Per Game	3.4	333	9
Three-Point Field-Goal Percentage	26.9	309	9
Turnover Margin	-2.37	281	7
Turnovers Forced	14.84	249	4
Turnovers Per Game	17.2	240	9

INDIVIDUAL

	NCAA	Summit
Free-Throw Percentage		
De'Jour Young	88.5	1
Zaria Atkins	85.7	4
As 1/19/2017		
* NCAA rank does not include schools reclassifying		

Gates Center Attendance Records			
1.	1/19/2002	Toledo	1,827
2.	12/10/2006	Indiana	1,801
3.	11/19/2004	Bowling Green	1,438
4.	12/29/2013	Ball State	1,278
5.	1/24/2015	Denver	1,215
6.	1/13/1996	Southern Indiana	1,150
7.	12/6/2014	Northern Kentucky	1,147
8.	12/6/2012	Purdue	1,124
9.	11/12/2013	Indiana	1,085
10.	11/11/2016	Belmont	1,049

Season and Career Totals

2016-17 Career

DOUBLE-DOUBLES		
KeShyra McCarver	-	1
De'Jour Young	1	1

30-PLUS POINT GAMES		
Rachel Rinehart	-	1

20-PLUS POINT GAMES		
Rachel Rinehart	-	4
KeShyra McCarver	-	3
Peyton Fallis	1	1
De'Jour Young	1	1

DOUBLE-DIGIT SCORING GAMES		
Rachel Rinehart	8	33
De'Jour Young	13	18
KeShyra McCarver	4	9
Zaria Atkins	8	8
Anna Lappenküper	5	5
Peyton Fallis	2	4
Selena Lozada	2	4
Lindley Kistler	1	1
Yuleska Ramirez-Tejeda	1	1

10-PLUS REBOUND GAMES		
De'Jour Young	1	2
KeShyra McCarver	-	1
Rachel Rinehart	1	1

5-PLUS ASSIST GAMES		
Rachel Rinehart	4	17
De'Jour Young	3	3
Anna Lappenküper	2	2
Zaria Atkins	1	1

3-PLUS STEAL GAMES		
Rachel Rinehart	3	11
De'Jour Young	1	5
KeShyra McCarver	1	4
Peyton Fallis	-	2
Zaria Atkins	2	1
Yuleska Ramirez-Tejeda	1	1
Anna Lappenküper	1	1

3-PLUS THREE-POINT FG GAMES		
KeShyra McCarver	-	3
Rachel Rinehart	1	3
Peyton Fallis	1	2
Lindley Kistler	1	1
Anna Lappenküper	1	1

STARTS		
Rachel Rinehart	18	71
De'Jour Young	19	39
KeShyra McCarver	16	37
Selena Lozada	13	18
Anna Lappenküper	14	14
Zaria Atkins	13	13
Isis Parker	1	2
Peyton Fallis	1	2

5-5-5 GAMES		
At least 5 in three categories (pts, rbs, ast, stl or blk)		
Rachel Rinehart	2	6
De'Jour Young	3	3



## Single Game Stat Leaders

2016-17 Career

### TEAM LEADER IN POINTS

Rachel Rinehart	3	10
De'Jour Young	10	10
KeShyra McCarver	1	3
Zaria Atkins	3	3
Selena Lozada	1	1
Lindley Kistler	1	1
Peyton Fallis	1	1

### TEAM LEADER IN REBOUNDS

De'Jour Young	9	15
Rachel Rinehart	2	12
KeShyra McCarver	4	10
Selena Lozada	4	5
Isis Parker	1	2
Lindley Kistler	1	1
Zaria Atkins	1	1

### TEAM LEADER IN ASSISTS

Rachel Rinehart	11	35
De'Jour Young	5	9
Anna Lappenküper	4	4
Zaria Atkins	4	4
KeShyra McCarver	-	3
Peyton Fallis	2	2
Isis Parker	1	1

### TEAM LEADER IN STEALS

Rachel Rinehart	8	34
De'Jour Young	5	12
Zaria Atkins	6	6
KeShyra McCarver	5	5
Anna Lappenküper	4	4
Peyton Fallis	1	3
Selena Lozada	3	3
Yuleska Ramirez-Tejeda	2	2
Isis Parker	1	1
Nia Thomas	1	1

### TEAM LEADER IN BLOCKS

Selena Lozada	10	12
KeShyra McCarver	3	7
Isis Parker	5	7
De'Jour Young	2	6
Rachel Rinehart	1	3
Lindley Kistler	2	2
Anna Lappenküper	2	2
Peyton Fallis	-	1
Yuleska Ramirez-Tejeda	1	1

### POINTS OFF THE BENCH

Rachel Rinehart	1	8
KeShyra McCarver	1	7
Peyton Fallis	3	7
De'Jour Young	-	3
Anna Lappenküper	3	3
Selena Lozada	3	3
Isis Parker	3	4
Yuleska Ramirez-Tejeda	3	3
Lindley Kister	1	1
Zaria Atkins	1	1

## Miscellaneous Game Stats

### SCORES FIRST

Fort Wayne	4
Opponents	15

### HOW FORT WAYNE SCORED FIRST POINT

Free Throw	3
Jumper	6
Layup	9
Three-Pointer	1

### FIRST FORT WAYNE POINT SCORED BY

KeShyra McCarver	5
De'Jour Young	5
Anna Lappenküper	3
Peyton Fallis	2
Rachel Rinehart	2
Isis Parker	1
Selena Lozada	1

### SCORING RUNS OF 10-0 OR BETTER

Fort Wayne	4
Opponents	17

### TIP-OFFS CONTROLLED

Fort Wayne	4
Opponents	15

Selena Lozada 1/13 (.077)

KeShyra McCarver 3/6 (.500)

### FORT WAYNE'S FIRST SUBSTITUTION

Isis Parker	10
Peyton Fallis	5
Anna Lappenküper	3
Yuleska Ramirez-Tejeda	3
Zaria Atkins	1
Lindley Kistler	1
Selena Lozada	1

### PLAYERS FOULED OUT

Fort Wayne	13
Opponents	6

Isis Parker	5
Rachel Rinehart	2
Anna Lappenküper	2
KeShyra McCarver	2
Selena Lozada	1
Peyton Fallis	1

### THREE- AND FOUR-POINT PLAYS

Fort Wayne	20
Opponents	17

Rachel Rinehart	7	26
KeShyra McCarver	2	12
De'Jour Young	2	5
Zaria Atkins	3	3
Peyton Fallis	1	2
Selena Lozada	3	3
Isis Parker	1	2
Yuleska Ramirez-Tejeda	1	1

### BENCH POINTS

Fort Wayne	311 (16.4 ppg.)
Opponents	370 (19.5 ppg.)

### LARGEST HALFTIME LEAD

12 (35-23) vs Defiance (11/12/16)

### LARGEST HALFTIME DEFICIT

28 (45-17) vs Miami (Ohio) (12/19/16)

### LARGEST WIN

18 (76-58) vs Defiance (11/12/16)

### LARGEST DEFEAT

28 (87-59) at South Dakota (1/18/17)

### LARGEST LEAD

19 (42-23, 7:06, 3rd) vs Defiance (11/12/16)

### LARGEST DEFICIT

34 (44-10, 2:43, 2nd) vs Miami (Ohio) (12/19/16)

### LARGEST DEFICIT OVERCOME TO WIN

8 (34-26, 3:47, 2nd) vs Eastern Kentucky (12/21/16)

### LARGEST LEAD GIVEN UP IN LOSS

10 (2 times)

MR - (27-17, 7:07, 2nd) vs. Oakland (11/19/16)

### MOST CONSECUTIVE POINTS

11 (3 times)

MR - (6:07 - 2:34 1st) at South Dakota State (11/5/17)

### MOST CONSECUTIVE POINTS BY OPP.

19 (2:28 1st - 5:32 2nd) vs Miami (Ohio) (12/19/16)

### LONGEST WINNING STREAK

-

### LONGEST LOSING STREAK

7 (11/14/16 - 12/6/16)

### LARGEST HOME CROWD

1,789 vs Coastal Carolina (11/26/16)

### LARGEST ROAD CROWD

1,611 at South Dakota (1/18/17)

### MOST TIME LEADING

36:48 vs Defiance (11/12/16)

### MOST TIME LEADING IN LOSS

19:41 vs Denver (1/12/17)

### MOST TIME WITH SCORE TIED

6:12 at Wright State (12/20/16)

### MOST TIME TRAILING

39:50 at Oral Roberts (12/31/16)

### MOST LEAD CHANGES

10 vs Trine (11/14/16)

### MOST TIE SCORES

10 (2 times)

MR - at Wright State (12/20/16)

## STARTING LINEUPS

Game	G	G	G	G/F	F
Indiana Tech (Ex)	Lappenküper	Young	Rinehart	Parker	Lozada
Belmont	Lappenküper	Young	Rinehart	Parker	Lozada
Defiance	Lappenküper	Young	Rinehart	McCarver	Lozada
Trine	Lappenküper	Young	Rinehart	McCarver	Lozada
at Butler	Lappenküper	Young	Rinehart	McCarver	Lozada
Oakland	Lappenküper	Young	Rinehart	Fallis	McCarver
Coastal Carolina	Lappenküper	Young	Rinehart	McCarver	Lozada
at Kent State	Lappenküper	Young	Atkins	McCarver	Lozada
at Illinois	Atkins	Young	Rinehart	McCarver	Lozada
at Western Michigan	Atkins	Young	Rinehart	McCarver	Lozada
at UIC	Atkins	Young	Rinehart	McCarver	Lozada
vs. Miami (Ohio)	Atkins	Young	Rinehart	McCarver	Lozada
at Wright State	Atkins	Young	Rinehart	Lappenküper	McCarver
vs. Eastern Kentucky	Atkins	Young	Rinehart	McCarver	Lozada
Western Illinois	Atkins	Young	Rinehart	Lappenküper	McCarver
at Oral Roberts	Atkins	Young	Rinehart	Lappenküper	McCarver
at South Dakota State	Atkins	Young	Rinehart	Lappenküper	McCarver
at North Dakota State	Atkins	Young	Rinehart	Lappenküper	McCarver
Denver	Atkins	Young	Rinehart	Lappenküper	Lozada
at South Dakota	Atkins	Young	Rinehart	Lappenküper	Lozada
Oral Roberts					
Omaha (Pink Out)					
IUPUI					
at Denver					
South Dakota					
North Dakota State					
at Omaha					
South Dakota State					
at Western Illinois					
at IUPUI					
<b>BY ROTATION</b>					
0-1	Lappenküper	Young	Rinehart	Parker	Lozada
1-3	Lappenküper	Young	Rinehart	McCarver	Lozada
0-1	Lappenküper	Young	Rinehart	Fallis	McCarver
0-1	Lappenküper	Young	Atkins	McCarver	Lozada
2-3	Atkins	Young	Rinehart	McCarver	Lozada
0-5	Atkins	Young	Rinehart	Lappenküper	McCarver
0-2	Atkins	Young	Rinehart	Lappenküper	Lozada

## Fort Wayne vs.

16-17 OPPONENTS	All-Time	Under Nelson
Belmont	0-3	0-1
Butler	4-6	0-1
Coastal Carolina	2-2	0-1
Defiance	1-1	1-0
Denver	3-5	0-1
Eastern Kentucky	1-1	1-0
Illinois	0-5	0-1
IUPUI	12-17	0-0
Kent State	1-1	0-1
Miami (Ohio)	1-2	0-1
North Dakota State	8-16	0-1
Oakland	8-16	0-1
Omaha	4-4	0-0
Oral Roberts	5-11	0-1
South Dakota	3-9	0-1
South Dakota State	1-28	0-1
Trine	16-5	0-1
UIC	1-3	1-0
Western Illinois	10-10	0-1
Western Michigan	1-4	0-1
Wright State	5-8	0-1
<b>TOTALS</b>	<b>87-157</b>	<b>3-16</b>

## WHY MASTODONS?...

It all started about 10,000 years ago...

That's when mastodons roamed the southern Great Lakes region of North America. These stocky versions of modern elephants reached heights of about ten feet at the shoulder, with tusks that curved upward that were six feet or more in length. Mastodons were browsers who fed mostly on leaves and twigs from small trees and shrubs.

One such mastodon found its final resting place about two miles south of Angola, Indiana, on land that would eventually become part of Orsie Routsong's farm. In the fall of 1968, Routsong decided to expand a small pond on his property. An excavator was hired and instructed to pile the excavated material around the edge of the pond. Several days after the excavation was finished a heavy rain storm pounded the piles of dirt.

The next day, a young neighbor boy of Routsong's discovered a large bone in one of the dirt piles. Routsong knew it was something out of the ordinary, so he called Jack Sunderman, chair of the IPFW Geology Department, to identify the bone, and to ask for advice on what to do with it. Sunderman says his first question was, "How big is the bone," with Routsong's answer being "pretty big, maybe 3 or 4 feet long."

When Sunderman got to the farm, he identified the bone as a leg bone of a mastodon. He told Routsong a skeleton like this would have scientific and instructional value if a large portion of it could be located. Routsong agreed, and also agreed to have the IPFW Geology Department do the excavation. Sunderman got two more faculty members, Geoffrey Matthews and Bernd Erdtmann, and several geology students to help in the project.

After all the mastodon bones were collected, cleaned, and preserved, Routsong agreed to have the adult mastodon skeleton placed on permanent display at IPFW; the skull of a nearby baby mastodon is now on loan to Science Central.

In the spring of 1970, The Communicator (IPFW's student newspaper) began a drive to come up with a mascot for IPFW. Some of the suggested choices included the Boiler-Hoosiers, Warhawks, Marauders, Frontiersmen, Pioneers, Elfs, and Hobbits. Those names and others came from student suggestions. Steve Pettyjohn, who served as the student body president in 1968-69, wrote a letter to the editor about the school mascot. In his letter, Pettyjohn extolled the virtues of choosing the mastodon as IPFW's mascot: "It sounds different, strange - that's exactly why. It's different and yes, even strange. For God's Sakes, let's have the courage to be a little different."

In the meantime, former Indiana Congressman Mark Souder, who served as student body president in 1969-70, recalls being lobbied by the Geology Club to choose the mastodon.

According to Nusbaumer, "Souder appointed a committee in student government to select a name although he was lobbying hard for the mastodon." After some discussion on the subject, Souder says a vote was taken by the committee and the mastodon came out the winner. Souder finished his recollection with these thoughts. "History shows that the advocacy of the geology club was correct. The fast, decisive action of the elected student government—though it did not please everyone and was not a precedent that the University desired to see—has also been upheld by history as IPFW regularly scores high in any list of unique university nicknames; even in this era when everybody strives to be different. We did it decades ago."

## WHAT IS A MASTODON?...

### (ACCORDING TO WIKIPEDIA)

Mastodons are any species of extinct proboscideans (mammals with tusks and long, muscular trunks) in the genus Mammut, distantly related to elephants, that inhabited North and Central America during the late Miocene or late Pliocene up to their extinction at the end of the Pleistocene 10,000 to 11,000 years ago. Mastodons lived in herds and were predominantly forest dwelling animals that fed on a mixed diet of browsing and grazing with a seasonal preference for browsing, in contrast to living elephants that are mostly grazing animals.

Modern reconstructions based on partial and skeletal remains reveal that mastodons were very similar in appearance to elephants and, to a lesser degree, mammoths, though not closely related to either one. Compared to mammoths, mastodons had shorter legs, a longer body and were more heavily muscled, a build similar to that of the current Asian elephants. The average body size of the species was around 2.3 m (7 ft 7 in) in height at the shoulders, corresponding to a large female or a small male, but large males could grow up to 2.8 m (9 ft 2 in) in height and weigh as much as 4.5 tonnes (5 short tons).

IPFW WHEN...	2016-17	NELSON
Overall	3-16	3-16
Home	1-6	1-6
Road	1-9	1-9
Neutral	1-1	1-1
At Memorial Coliseum	0-2	0-2
Summit League	0-6	0-6
Summit League Home	0-2	0-2
Summit League Road	0-4	0-4
Non-League	3-10	3-10
Non-League Home	1-4	1-4
Non-League Road	1-5	1-5
Following a win	0-3	0-3
Following a loss	3-12	3-12
Against top 25 (AP) teams	0-0	0-0
Against Mid-Major top 25 teams	0-1	0-1
In Overtime	0-0	0-0
In Multiple Overtimes	0-0	0-0
Regular Season Tournaments	1-2	1-2
Postseason	0-0	0-0
Wins Tip	1-3	1-3
Scores First	1-3	1-3
Leads after 1st quarter	1-4	1-4
Trails after 1st quarter	2-12	2-12
Tied after 1st quarter	0-0	0-0
Leads at half	2-3	2-3
Trails at half	1-12	1-12
Tied at half	0-1	0-1
Leading with 5:00 left	3-0	3-0
Trailing with 5:00 left	0-16	0-16
Tied with 5:00 left	0-0	0-0
Shoots 50% or better	0-0	0-0
Shoots less than 50%	3-16	3-16
Opponent shoots ≥ 50%	0-5	0-5
Opponent shoots < 50%	3-11	3-11
Shoots better than opp.	3-1	3-1
Shoots worse than opp.	0-15	0-15
Makes 5+ 3-Pt. shots	2-5	2-5
Makes 9+ 3-Pt. shots	0-0	0-0
More 3-Pt. made than opp.	2-5	2-5
Has equal 3-Pt. made	0-0	0-0
Fewer 3-Pt. made than opp.	1-11	1-11
Shoots 3-Pt. better than opp.	2-3	2-3
Shoots 3-Pt. worse than opp.	1-13	1-13
Shoots 3-Pt. 35% or better	2-5	2-5
Shoots 3-Pt. less than 35%	1-10	1-10
Opp. Shoots 3-Pt. 35% or better	0-15	0-15
Opp. Shoots 3-Pt. less than 35%	3-1	3-1
More FTs made than opp.	3-7	3-7
Has equal FTs made	0-0	0-0
Fewer FTs made than opp.	0-9	0-9
Out-rebounds opp.	3-5	3-5
Has equal rebounds	0-1	0-1
Is out-rebounded	0-10	0-10
More turnovers than opp.	2-11	2-11
Has equal turnovers as opp.	0-0	0-0
Fewer turnovers than opp.	1-5	1-5
More assists than opp.	1-2	1-2
Has equal assists	1-0	1-0
Fewer assists than opp.	1-14	1-14
More blocks than opp.	0-2	0-2
Has equal blocks	0-1	0-1
Fewer blocks than opp.	3-13	3-13
More steals than opp.	2-3	2-3
Has equal steals	0-0	0-0
Fewer steals than opp.	1-13	1-13
More fouls than opp.	1-11	1-11
Has equal fouls	0-0	0-0
Fewer fouls than opp.	2-5	2-5

Plays in the state of Indiana	1-7	1-7
Plays outside Indiana	2-9	2-9
Plays in Eastern Time Zone	2-11	2-11
Plays in Central Time Zone	1-5	1-5
Playe in Mountain Time Zone	0-0	0-0
Plays in Pacific Time Zone	0-0	0-0
Plays during the day	2-8	2-8
Plays at night (5pm or later)	1-8	1-8
Plays in November	1-6	1-6
Plays in December	2-6	2-6
Plays in January	0-4	0-4
Plays in February	0-0	0-0
Plays in March	0-0	0-0
Plays on Sunday	0-0	0-0
Plays on Monday	0-2	0-2
Plays on Tuesday	0-2	0-2
Plays on Wednesday	1-4	1-4
Plays on Thursday	0-2	0-2
Plays on Friday	0-2	0-2
Plays on Saturday	2-4	2-4
Attendance is ≤ 999	3-10	3-10
Attendance is ≥ 1,000	0-6	0-6
Margin is 1 point	0-0	0-0
Margin is between 2-5	0-0	0-0
Margin is between 6-10	2-3	2-3
Margin is between 11-20	1-4	1-4
Margin is more than 20	0-8	0-8
Scores ≤ 49 pts.	0-3	0-3
Scores 50-59 pts.	0-9	0-9
Scores 60-69 pts.	2-2	2-2
Scores 70-79 pts.	1-2	1-2
Scores 80-89 pts.	0-0	0-0
Scores 90-99 pts.	0-0	0-0
Scores 100+ pts.	0-0	0-0
Opponent Scores ≤ 49 pts.	0-0	0-0
Opponent scores 50-59 pts.	3-1	3-1
Opponent scores 60-69 pts.	0-5	0-5
Opponent scores 70-79 pts.	0-5	0-5
Opponent scores 80-89 pts.	0-5	0-5
Opponent scores 90-99 pts.	0-0	0-0
Opponent scores 100+ pts.	0-0	0-0
Force 20 or more turnovers	0-3	0-3
Make 10 or more steals	1-2	1-2
1 or more 20+ point scorer	0-3	0-3
No 20+ point scorer	3-13	3-13
≤ 2 players score 10+ pts.	2-9	2-9
3 players score 10+ pts.	0-6	0-6
4+ players score 10+ pts.	1-1	1-1
≥ 1 player with 10+ reb.	0-2	0-2
≥ 1 player with double-double	0-1	0-1
≥ 1 player with 5+ 3-Pt. made	0-0	0-0
No player with 5+ 3-Pt. made	3-16	3-16
No IPFW player fouls out	1-8	1-8
1+ IPFW player fouls out	2-8	2-8
More bench points	2-5	2-5
Has equal bench points	0-0	0-0
Fewer bench points	1-11	1-11
More points in the paint	2-1	2-1
Has equal points in the paint	0-1	0-1
Fewer points in the paint	1-14	1-14
More points off turnovers	1-4	1-4
Has equal points off turnovers	0-1	0-1
Fewer points off turnovers	2-11	2-11
More 2nd chance points	3-7	3-7
Has equal 2nd chance points	0-1	0-1
Fewer 2nd chance points	0-8	0-8
More fast break points	1-0	1-0
Has equal fast break points	0-4	0-4
Fewer fast break points	2-12	2-12

## BUSY MASTODONS...

The Mastodons wrapped up a busy opening weekend as the team played three games in four days to begin the season. Fort Wayne was the only team in Division I to have played three games through the first four days of the season (Nov. 11-14).

## MAKING THE ROUNDS...

Of the current 32 Division I basketball conferences, Fort Wayne has taken on at least one school, currently or when they played, in all but four of those leagues. The four remaining conferences the Mastodons have yet to play are: Colonial Athletic Association, Ivy League, Southwestern Athletic Conference, and West Coast Conference. Three other leagues (Big Sky Conference, Pacific 12 Conference, and Southland Conference) Fort Wayne played a current member while they were a part of another conference.

## SEASON OPENERS...

The Fort Wayne women's basketball team has an all-time record of 16-25 in its season openers, after falling to Belmont on Nov. 11.

## SUMMIT LEAGUE PRESEASON POLL...

Fort Wayne was picked to finish ninth in the Summit League preseason poll of the league's head coaches. The Mastodons received 80 points as coaches were not allowed to vote for their own teams.

South Dakota State was tabbed as the preseason favorite to win the 2016-17 Summit League Championship, receiving 30 first-place votes to finish atop the poll with 542 points.

### 2016-17 Summit League Preseason Poll

Place	Team	Points (1st)
1.	South Dakota State	542 (30)
2.	IUPUI	438
3.	South Dakota	393 (3)
4.	Oral Roberts	391 (1)
5.	Omaha	325
6.	Western Illinois	250
7.	North Dakota State	156
8.	Denver	150
9.	Fort Wayne	80

### Preseason Player of the Year:

Macy Miller, South Dakota State

### First Team

Name	School	Pos.	Year
Danielle Lawrence	IUPUI	G	Jr.
Macy Miller	South Dakota State	G	Jr.
Clarissa Ober	South Dakota State	C	Sr.
Mikale Rogers	IUPUI	C	Sr.
Mikaela Shaw	Omaha	F	Sr.
Ellie Thompson	South Dakota State	F	Jr.

### Second Team

Name	School	Pos.	Year
Madison Guebert	South Dakota State	G	So.
Faith Ihim	Oral Roberts	F	Jr.
Kaylan Mayberry	Oral Roberts	G	Sr.
Taylor Thunstedt	North Dakota State	G	Jr.
Kerri Young	South Dakota State	G/F	Sr.



## FORT WAYNE INDIVIDUAL GAME HIGHS

Points	22		Peyton Fallis at Butler (11/16/16)
Field Goals Made	7		De'Jour Young vs Denver (01/12/17)
	7		De'Jour Young vs Western Illinois (12/28/16)
	7		De'Jour Young vs Eastern Kentucky (12/21/16)
	7		De'Jour Young at UIC (12/10/16)
	7		Peyton Fallis at Butler (11/16/16)
Field Goal Att.	18		De'Jour Young vs Western Illinois (12/28/16)
FG Pct (min 5 made)	.833	(5-6)	Rachel Rinehart at Kent State (11/30/16)
	.833	(5-6)	Rindley Kistler vs Defiance (11/12/16)
3-Point FG Made	4		Peyton Fallis at Butler (11/16/16)
3-Point FG Att.	10		Anna Lappenkuper at South Dakota State (01/05/17)
3-PT FG Pct (min 2 made)	1.000	(2-2)	Zaria Atkins vs Denver (01/12/17)
	1.000	(2-2)	Zaria Atkins at Kent State (11/30/16)
	1.000	(2-2)	KeShyra McCarver vs Belmont (11/11/16)
Free Throws Made	9		Zaria Atkins vs Eastern Kentucky (12/21/16)
Free Throw Att.	11		Rachel Rinehart at UIC (12/10/16)
FT Pct (min 7 made)	1.000	(9-9)	Zaria Atkins vs Eastern Kentucky (12/21/16)
Rebounds	11		De'Jour Young vs Denver (01/12/17)
Assists	6		Rachel Rinehart vs Trine (11/14/16)
Steals	5		Rachel Rinehart vs Western Illinois (12/28/16)
Blocked Shots	3		Selena Lozada vs Western Illinois (12/28/16)
Turnovers	7		Anna Lappenkuper vs Western Illinois (12/28/16)

## FORT WAYNE TEAM GAME HIGHS

POINTS	76		DEFIANCE (11/12/16)
FIELD GOALS MADE	30		DEFIANCE (11/12/16)
FIELD GOAL ATTEMPTS	66		at South Dakota State (01/05/17)
	66		BELMONT (11/11/16)
FIELD GOAL PERCENTAGE	.486	(18-37)	at Wright State (12/20/16)
3 PT FIELD GOALS MADE	6		at Butler (11/16/16)
	6		DEFIANCE (11/12/16)
3 PT FG ATTEMPTS	20		at South Dakota State (01/05/17)
	20		TRINE (11/14/16)
3 PT FG PERCENTAGE	.600	(6-10)	DEFIANCE (11/12/16)
FREE THROWS MADE	25		vs Eastern Kentucky (12/21/16)
FREE THROW ATTEMPTS	28		vs Eastern Kentucky (12/21/16)
FREE THROW PERCENTAGE	.944	(17-18)	at South Dakota (01/18/17)
	.944	(17-18)	at Oral Roberts (12/31/16)
REBOUNDS	40		DENVER (01/12/17)
	40		DEFIANCE (11/12/16)
ASSISTS	17		DEFIANCE (11/12/16)
STEALS	12		at North Dakota State (01/07/17)
	12		OAKLAND (11/19/16)
BLOCKED SHOTS	4		WESTERN ILLINOIS (12/28/16)
	4		TRINE (11/14/16)
TURNOVERS	25		OAKLAND (11/19/16)
FOULS	31		at Kent State (11/30/16)

## FORT WAYNE TEAM GAME LOWS

POINTS	33		at Illinois (12/02/16)
FIELD GOALS MADE	10		at Illinois (12/02/16)
FIELD GOAL ATTEMPTS	37		at Wright State (12/20/16)
FIELD GOAL PERCENTAGE	.232	(13-56)	at Western Michigan (12/06/16)
3 PT FIELD GOALS MADE	0		at Western Michigan (12/06/16)
3 PT FG ATTEMPTS	4		at Oral Roberts (12/31/16)
3 PT FG PERCENTAGE	.000	(0-13)	at Western Michigan (12/06/16)
FREE THROWS MADE	4		WESTERN ILLINOIS (12/28/16)
FREE THROW ATTEMPTS	5		WESTERN ILLINOIS (12/28/16)
FREE THROW PERCENTAGE	.588	(10-17)	DEFIANCE (11/12/16)
REBOUNDS	24		at Butler (11/16/16)
	24		WESTERN ILLINOIS (12/28/16)
	24		at North Dakota State (01/07/17)
	24		at South Dakota (01/18/17)
ASSISTS	4		at Illinois (12/02/16)
	4		at Western Michigan (12/06/16)
	4		at Oral Roberts (12/31/16)
STEALS	0		DENVER (01/12/17)
BLOCKED SHOTS	0		OAKLAND (11/19/16)
	0		vs Miami (Ohio) (12/19/16)
	0		vs Eastern Kentucky (12/21/16)
TURNOVERS	9		at South Dakota State (01/05/17)
	9		at North Dakota State (01/07/17)
FOULS	12		vs Eastern Kentucky (12/21/16)

## OPPONENT INDIVIDUAL GAME HIGHS

Points	31		Kelsey Tietje vs Defiance (11/12/16)
Field Goals Made	13		Kelsey Tietje vs Defiance (11/12/16)
Field Goal Att.	22		Kelsey Tietje vs Defiance (11/12/16)
FG Pct (min 5 made)	1.000	(8-8)	Ellie Thompson at South Dakota State (01/05/17)
3-Point FG Made	8		Lauren Loven vs Denver (01/12/17)
3-Point FG Att.	11		Lauren Loven vs Denver (01/12/17)
3-PT FG Pct (min 2 made)	1.000	(3-3)	Kaylan Mayberry at Oral Roberts (12/31/16)
Free Throws Made	8		Briana Johnson vs Denver (01/12/17)
Free Throw Att.	11		Briana Johnson vs Denver (01/12/17)
	11		Larissa Lurken at Kent State (11/30/16)
FT Pct (min 7 made)	.727	(8-11)	Briana Johnson vs Denver (01/12/17)
Rebounds	14		Hannah Little vs Oakland (11/19/16)
Assists	11		Whitney Schalk vs Defiance (11/12/16)
Steals	6		Taylor Gleason vs Oakland (11/19/16)
Blocked Shots	5		Marley Hill at Western Michigan (12/06/16)
Turnovers	9		Larissa Lurken at Kent State (11/30/16)

## OPPONENT TEAM GAME HIGHS

POINTS	87		at South Dakota (01/18/17)
FIELD GOALS MADE	34		at South Dakota (01/18/17)
FIELD GOAL ATTEMPTS	63		BELMONT (11/11/16)
FIELD GOAL PERCENTAGE	.563	(27-48)	at South Dakota State (01/05/17)
3 PT FIELD GOALS MADE	10		at Oral Roberts (12/31/16)
	10		BELMONT (11/11/16)
3 PT FG ATTEMPTS	26		BELMONT (11/11/16)
3 PT FG PERCENTAGE	.714	(10-14)	at Oral Roberts (12/31/16)
FREE THROWS MADE	25		TRINE (11/14/16)
FREE THROW ATTEMPTS	35		TRINE (11/14/16)
FREE THROW PERCENTAGE	.900	(9-10)	at Wright State (12/20/16)
REBOUNDS	45		at North Dakota State (01/07/17)
	45		BELMONT (11/11/16)
ASSISTS	18		at North Dakota State (01/07/17)
	18		WESTERN ILLINOIS (12/28/16)
STEALS	15		OAKLAND (11/19/16)
BLOCKED SHOTS	8		at Western Michigan (12/06/16)
	8		OAKLAND (11/19/16)
TURNOVERS	22		at North Dakota State (01/07/17)
FOULS	27		at UIC (12/10/16)

## OPPONENT TEAM GAME LOWS

POINTS	55		at UIC (12/10/16)
FIELD GOALS MADE	20		at UIC (12/10/16)
FIELD GOAL ATTEMPTS	48		at Kent State (11/30/16)
	48		at South Dakota State (01/05/17)
FIELD GOAL PERCENTAGE	.367	(22-60)	at Illinois (12/02/16)
3 PT FIELD GOALS MADE	2		COASTAL CAROLINA (11/26/16)
	2		at South Dakota State (01/05/17)
3 PT FG ATTEMPTS	5		COASTAL CAROLINA (11/26/16)
3 PT FG PERCENTAGE	.231	(3-13)	vs Eastern Kentucky (12/21/16)
FREE THROWS MADE	5		at Illinois (12/02/16)
FREE THROW ATTEMPTS	9		WESTERN ILLINOIS (12/28/16)
FREE THROW PERCENTAGE	.500	(5-10)	at Illinois (12/02/16)
REBOUNDS	26		at Wright State (12/20/16)
ASSISTS	10		TRINE (11/14/16)
	10		at South Dakota State (01/05/17)
STEALS	3		at South Dakota State (01/05/17)
	3		at North Dakota State (01/07/17)
	3		DENVER (01/12/17)
BLOCKED SHOTS	0		COASTAL CAROLINA (11/26/16)
TURNOVERS	8		at Illinois (12/02/16)
	8		DENVER (01/12/17)
FOULS	11		BELMONT (11/11/16)

## FORT WAYNE TEAM RECORDS (MIN. 20 GAMES)

Record	
MOST WINS.....	23 (1995-96)
MOST LOSSES.....	24 (1998-99)
MOST GAMES PLAYED.....	31 (2010-11)
Points	
GAME HIGH.....	117, vs Tri-State (12/3/88)
SEASON HIGH.....	2,431 (1989-90)
GAME LOW.....	28, Indiana State (12/28/02)
SEASON LOW.....	1,110 (1978-79)
Field Goals Made	
GAME HIGH.....	48, at Southern Indiana (2/7/91)
SEASON HIGH.....	901 (1989-90)
GAME LOW.....	11, Wichita State (11/8/2013)
	11, Winthrop (12/23/05)
SEASON LOW.....	443 (1978-79)
Field Goal Attempts	
GAME HIGH.....	92, at Purdue (11/21/04)
SEASON HIGH.....	1,864 (2007-08)
GAME LOW.....	38, Wichita State (11/8/13)
SEASON LOW.....	1,263 (1978-79)
Field Goal Percentage	
GAME HIGH.....	.720 (36-of-50), at IUPUI (1/23/92)
SEASON HIGH.....	.492 (877-1782), (1991-92)
GAME LOW.....	.163 (15-of-92), Purdue (11/21/04)
LOW SEASON.....	.331 (595-1798), (2004-05)
3-Point Field Goals Made	
GAME HIGH.....	18, at Missouri-St. Louis (2/15/01)
SEASON HIGH.....	271 (2013-14)
GAME LOW.....	0, Several times
SEASON LOW.....	13 (1992-93)

3-Point Field Goal Attempts	
GAME HIGH.....	48, vs Bowling Green (11/19/04)
	48, vs Grace (12/11/99)
SEASON HIGH.....	743 (2013-14)
GAME LOW.....	0, Several times
SEASON LOW.....	59 (1992-93)
3-Point Field Goal Percentage (min. 10 att.)	
GAME HIGH.....	.800 (8-of-10), at Cleveland State (1/26/04)
SEASON HIGH.....	.430 (89-207), (1989-90)
GAME LOW.....	.000 (0-of-10), St. Joseph's (1/3/91)
LOW SEASON.....	.220 (44-200), (1997-98)
Free Throws Made	
GAME HIGH.....	42, vs NKU (12/21/95)
SEASON HIGH.....	604 (1995-96)
GAME LOW.....	1, Indianapolis (2/20/97)
	1, Indianapolis (3/6/1993)
SEASON LOW.....	214 (1979-80)
Free Throw Attempts	
GAME HIGH.....	52, vs NKU (12/21/95)
	52, at Wayne State (11/16/90)
SEASON HIGH.....	821 (1991-92)
GAME LOW.....	2, Ashland (2/20/88)
SEASON LOW.....	382 (1982-83)
Free Throw Percentage (min. 10 made/20 att.)	
GAME HIGH.....	1.000 (24-of-24), vs Indiana (11/12/13)
SEASON HIGH.....	.794 (409-515), (2012-13)
GAME LOW.....	.433 (13-of-30), Kentucky (11/21/03)
SEASON LOW.....	.483 (224-464), (1978-79)

Rebounds	
GAME HIGH.....	65, vs Shippensburg (11/19/95)
SEASON HIGH.....	1,244 (1991-92)
GAME LOW.....	18, IUPUI (3/2/13)
SEASON LOW.....	132 (1978-79)
Assists	
GAME HIGH.....	31, at Southern Indiana (2/7/91)
SEASON HIGH.....	551 (1994-95)
GAME LOW.....	1, Wichita State (11/8/13)
	1, Hampton (11/29/86)
SEASON LOW.....	125 (1980-81)
Blocks	
GAME HIGH.....	11, vs Indiana Tech (11/23/10)
	11, vs Kalamazoo (12/2/05)
SEASON HIGH.....	119 (2009-10)
GAME LOW.....	0, Several times
SEASON LOW.....	18 (1986-87)
Steals	
GAME HIGH.....	25, vs Kalamazoo (12/2/05)
SEASON HIGH.....	315 (1990-91)
GAME LOW.....	0, St. Bonaventure (12/2/08)
	0, UMBG (12/20/05)
SEASON LOW.....	188 (2008-09)
Turnovers	
GAME HIGH.....	40, Hampton (12/4/87)
SEASON HIGH.....	655 (1989-99)
GAME LOW.....	.5, North Dakota State (1/5/09)
SEASON LOW.....	184 (1980-81)



## FORT WAYNE INDIVIDUAL QUARTER HIGHS

Points	13	De'Jour Young, 2nd, at UIC (12/10/16)
FG Made	5	De'Jour Young, 2nd, at UIC (12/10/16)
FG Att.	7 (5x)	MR - De'Jour Young, 1st, at South Dakota (1/18/17)
3-Pt FG Made	2 (6x)	MR - Anna Lappenüper, 1st, at South Dakota (1/18/17)
3-P FG Att.	4	Anna Lappenüper, 3rd, at South Dakota State (1/5/17)
FT Made	6	De'Jour Young, 4th, vs Oakland (11/19/16)
FT Att.	8	De'Jour Young, 4th, vs Oakland (11/19/16)
Rebounds	6	De'Jour Young, 3rd, vs Denver (1/12/17)
Offensive Rebounds	4	De'Jour Young, 3rd, vs Denver (1/12/17)
Defensive Rebounds	5	De'Jour Young, 2nd, at UIC (12/10/16)
Fouls	3 (9x)	MR - KeShyra McCarver, 3rd, at South Dakota State (1/5/17)
Assists	3 (7x)	MR - De'Jour Young, 2nd, vs Denver (1/12/17)
Blocked Shots	2 (3x)	MR - Selena Lozada, 2nd, vs Western Illinois (12/28/16)
Steals	4	Rachel Rinehart, 4th, at South Dakota State (1/5/17)

## FORT WAYNE TEAM QUARTER HIGHS

Points	25	3rd, vs Defiance (11/12/16)
1st Quarter Points	21	vs Oakland (11/19/16)
2nd Quarter Points	21	at UIC (12/10/16)
3rd Quarter Points	25	vs Defiance (11/12/16)
4th Quarter Points	25	vs Denver (1/12/17)
Fewest Points	5 (2x)	MR - 1st, at Illinois (12/2/16)
FG Made	10 (2x)	MR - 1st vs Denver (1/12/17)
FG Att.	21	4th, at South Dakota State (1/5/17)
Highest FG Pct.	.667 (6-9)	3rd, at Wright State (12/20/16)
Lowest FG Pct.	.071 (1-14)	3rd, vs Denver (1/12/17)
3-Pt FG Made	3 (5x)	MR - 2nd, vs Denver (1/12/17)
3-Pt FG Att.	8 (2x)	MR - 3rd, at South Dakota State (1/5/17)
3-Pt FG Pct. (2 made)	1.000 (2-2)	2nd, vs Defiance (11/12/16)
FT Made	13	4th, vs. Eastern Kentucky (12/21/16)
FT Att.	15	4th, vs. Eastern Kentucky (12/21/16)
FT Pct (5 made)	1.000 (9-9)	4th, vs Trine (11/14/16)
Rebounds	15	3rd, vs Denver (1/12/17)
Offensive Rebounds	9	3rd, vs Denver (1/12/17)
Defensive Rebounds	10	2nd, at UIC (12/10/16)
Fouls	11	3rd, vs Coastal Carolina (11/26/16)
Assists	6 (2x)	2nd, at UIC (12/10/16)
Turnovers	10	2nd, vs Oakland, (11/19/16)
Blocked Shots	3	2nd, vs Trine (11/14/16)
Steals	6	4th, at South Dakota State (1/5/17)

## OPPONENT INDIVIDUAL QUARTER HIGHS

Points	16	Larissa Lurken, 1st, at Kent State (11/30/16)
FG Made	6 (2x)	MR - Larissa Lurken, 1st, at Kent State (11/30/16)
FG Att.	8 (3x)	MR - Larissa Lurken, 1st, at Kent State (11/30/16)
3-Pt FG Made	3	Lauren Loven, 4th, vs Denver (1/12/17)
3-P FG Att.	4 (4x)	MR - Lauren Loven, 3rd, vs Denver (1/12/17)
FT Made	4 (6x)	MR - Madison Guebert, 3rd, at South Dakota State (1/5/17)
FT Att.	6	Ced Gibson, 4th, vs Coastal Carolina (11/26/16)
Rebounds	7	Hannah Little, 4th, vs Oakland (11/19/16)
Offensive Rebounds	3 (7x)	MR - Megan Bonar, 4th, at South Dakota (1/18/17)
Defensive Rebounds	5	Taylor Thunstedt, 1st, at North Dakota State (1/7/2017)
Fouls	3 (3x)	MR - Jalen O'Bannon, 4th, vs Eastern Kentucky (12/21/16)
Assists	4 (4x)	MR - Lauren Dickerson, 1st, vs Miami (Ohio), 12/19/16)
Blocked Shots	3	Hannah Little, 1st, vs Oakland (11/19/16)
Steals	3 (2x)	MR - Taylor Gleason, 3rd, vs Oakland (11/19/16)

## OPPONENT TEAM QUARTER HIGHS

Points	32	1st, at South Dakota (1/18/17)
1st Quarter Points	31	at South Dakota (1/18/17)
2nd Quarter Points	21	vs Belmont (11/11/16)
3rd Quarter Points	25 (2x)	MR - at South Dakota (1/18/17)
4th Quarter Points	30 (2x)	MR - vs Denver (1/12/17)
Fewest Points	5	at Butler (11/16/16)
FG Made	13	1st, at South Dakota (1/18/17)
FG Att.	20	1st, vs Coastal Carolina (11/26/16)
Highest FG Pct.	.800 (12-15)	1st, at Oral Roberts (12/31/16)
Lowest FG Pct.	.154 (2-13) (2x)	MR - 1st, at Western Michigan (12/6/16)
3-Pt FG Made	4 (4x)	MR - 3rd, at Oral Roberts (12/31/16)
3-Pt FG Att.	10	4th, vs Belmont (11/11/16)
3-Pt FG Pct. (2 made)	1.000 (3-3)	4th, vs Denver (1/12/17)
FT Made	8 (3x)	MR - 3rd, at South Dakota State (1/5/17)
FT Att.	13 (2x)	Mr - 3rd, vs Coastal Carolina (11/26/16)
FT Pct (5 made)	1.000 (8-8)	3rd, at South Dakota State (1/5/17)
Rebounds	18	1st, vs Belmont (11/11/16)
Offensive Rebounds	7 (2x)	MR - 4th, at South Dakota (1/18/17)
Defensive Rebounds	13	1st, vs Belmont (11/11/16)
Fouls	12	4th, vs. Eastern Kentucky (12/21/16)
Assists	7	3rd, vs. Western Illinois (12/28/16)
Turnovers	9	1st, at North Dakota State (1/7/2017)
Blocked Shots	5	1st, at South Dakota (1/18/17)
Steals	6 (3x)	MR - 3rd, vs Oakland (11/19/16)

## FORT WAYNE INDIVIDUAL RECORDS

Points	
GAME .....	43, Lindy Jones at St. Joseph's (1/27/96)
.....	43, Amanda Hyde at Southern Illinois (11/29/12)
SEASON .....	752, Lisa Miller (1991-92)
CAREER .....	2358, Lisa Miller (1988-92)

Scoring Average	
SEASON .....	26.0, Lindy Jones (1995-96)
CAREER .....	21.2, Lisa Miller (1988-92)

Field Goals Made	
GAME .....	18, Lindy Jones at St. Joseph's (1/27/96)
SEASON .....	243, Lisa Miller (1991-92)
CAREER .....	808, Lisa Miller (1988-92)

Field Goals Attempted	
GAME .....	30, Lindy Jones at St. Joseph's (1/27/96)
SEASON .....	537, Johnna Lewis-Carlisle (2007-08)
CAREER .....	1658, Johnna Lewis-Carlisle (2004-08)

Field Goal Percentage (min. 10 att.)	
GAME ....	.909 (10-of-11), Stephanie Rosado at Centenary (12/31/10)
SEASON .....	.578 (170-294), Rhonda Unverferth (1984-85)
CAREER .....	.561 (216-385), Amy Neuhouser (1988-90)

3-Point Field Goals Made	
GAME .....	9, Jamie Holderman vs SIUE (2/1/01)
.....	9, Jamie Holderman at Bellarmine (1/13/00)
SEASON .....	96, Anne Boese (2009-10)
CAREER .....	301, Anne Boese (2008-12)

3-Point Field Goals Attempted	
GAME .....	17, Anne Boese at Oral Roberts (12/29/10)
.....	17, Jordan Zuppe vs Toledo (11/29/08)
.....	17, Jamie Holderman at Missouri-St. Louis (2/15/01)
SEASON .....	96, Anne Boese, (2009-10)
CAREER .....	768, Anne Boese, (2008-12)

3-Point Field Goal Percentage (min. 5 att.)	
GAME .....	1.000 (6-of-6), Hilary O'Connell vs UMBC (12/20/05)
SEASON .....	.461 (41-89), Trish Fleming (2000-01)
CAREER .....	.413 (229-555), Haley Seibert (2011-15)

Free Throws Made	
GAME .....	22, Ashley Johnson vs North Dakota State (2/26/06)
SEASON .....	266, Lisa Miller, (1991-92)
CAREER .....	741, Lisa Miller, (1988-92)

Free Throw Attempts	
GAME .....	24, Lisa Miller at Wayne State (11/16/90)
SEASON .....	336, Lisa Miller, (1991-92)
CAREER .....	922, Lisa Miller, (1988-92)

Free Throw Percentage (min. 9 att.)	
GAME .....	1.000 (14-of-14) Haley Seibert vs NKU (12/6/14)
.....	1.000 (14-of-14) Amanda Hyde vs Indiana (11/12/13)
.....	1.000 (14-of-14) Amanda Hyde vs Purdue (12/6/12)
.....	1.000 (14-of-14) Lisa Miller vs St. Joseph's (1/2/92)
.....	1.000 (14-of-14) Lisa Miller vs Tri-State (12/3/88)
SEASON .....	.914 (127-139), Haley Seibert (2014-15)
CAREER .....	.868 (315-363), Haley Seibert (2011-15)

Rebounds.....	
GAME .....	23, Vereba Bibbs vs UALR (11/28/03)
SEASON .....	280, Pam Edwards, (1991-92)
CAREER .....	937, Lisa Miller, (1988-92)

Rebound Average	
SEASON .....	10.9, Ann McCleneghen (1979-80)
CAREER .....	8.4, Lisa Miller (1988-92)

Assists	
GAME .....	15, Wendy Recker vs Southern Indiana (1/28/95)
SEASON .....	197, Wendy Recker, (1994-95)
CAREER .....	419, Wendy Recker, (1993-96)

Assists Average	
SEASON .....	7.3, Wendy Recker (1994-95)
CAREER .....	5.1, Wendy Recker (1993-96)

Blocks	
GAME .....	8, Stephanie Rosado Indiana Tech (11/23/10)
SEASON .....	47, Stephanie Rosado, (2010-11)
CAREER .....	130, Jennie Newhard, (1992-96)

Blocks Average	
SEASON .....	1.6, Jennie Newhard (1993-94)
.....	1.6, Shalauna McMillan (1996-97)
CAREER .....	1.3, Jennie Newhard (1992-96)

Steals	
GAME .....	10, Kayla Drake at South Dakota State (1/22/11)
SEASON .....	80, Sue Hendricks, (1980-81)
CAREER .....	249, Lindy Jones, (1992-96)

Steals Average	
SEASON .....	3.5, Sue Hendricks (1980-81)
CAREER .....	2.8, Laure Renninger (1982-84)

Games Played	
SEASON .....	31, Amanda Hyde (2010-11)
.....	31, Stephanie Rosado (2010-11)
.....	31, Erin Murphy (2010-11)
.....	31, Anne Boese (2010-11)
.....	31, Jordan Zuppe (2010-11)
CAREER .....	121, Jordan Zuppe (2007-11)

Games Started	
SEASON .....	31, Anne Boese (2010-11)
.....	31, Stephanie Rosado (2010-11)
.....	31, Jordan Zuppe (2010-11)
CAREER .....	118, Jordan Zuppe (2007-11)

# THE LAST TIME FORT WAYNE...

## IN THE RANKINGS

Was Ranked ..... No. 18, 3/7/1996  
Played a Ranked (AP) Team ..... at No. 23 West Virginia, 12/13/2014 (L, 82-48)  
Defeated a Ranked (AP) Team ..... at No. 21 Michigan State, 12/1/2013 (W, 81-76)

## CONSECUTIVE GAME STREAKS

Won 5+ Consecutive Games ..... Dec. 31, 2010 - Jan. 24, 2011 (6 straight)  
Won 10+ Consecutive Games ..... Nov. 18, 1995 - Jan. 13, 1996 (14 straight)  
**Lost 5+ Consecutive Games ..... Dec. 28, 2016 - present (6 straight)**  
Lost 10+ Consecutive Games ..... Dec. 20, 2015 - Jan. 28, 2016 (11 straight)

## SCORING

**Scored 20-24 points ..... De'Jour Young (20), vs. Denver, 1/12/2017**  
Scored 25-29 points ..... Josie Fisher (28), at Western Illinois, 2/4/2016  
Scored 30-39 points ..... Kamilah Carter (30), vs. North Dakota State, 2/27/2016  
Scored ≥ 40 points ..... Amanda Hyde (41), at SIUE, 11/26/2013  
Freshman Scored 25+ points ..... Josie Fisher (28), at Western Illinois, 2/4/2016  
**Came off the bench to score 20 ..... Peyton Fallis (22), at Butler, 11/16/2016**  
Consecutive 25 point games ..... Amanda Hyde, (28), vs. Denver, 3/9/2014; (25), at UIC, 3/19/2014  
Two players scored 20 points ..... at Western Illinois, 2/4/2016  
..... Josie Fisher (28) and Kamilah Carter (22)  
Three players scored 20 points ..... vs. Omaha, 3/1/2014  
..... Haley Seibert (23), Ariana Simmons (22), Amanda Hyde (20)

**None in double figures ..... at Western Michigan, 12/6/2016**  
**One in double figures ..... De'Jour Young (11), at Illinois, 12/2/2016**  
**Two in double figures ..... at South Dakota State, 1/5/2017**  
..... Rachel Rinehart (13) and Anna Lappenküper (12)

**Three in double figures ..... at South Dakota, 1/18/2017**  
..... Rachel Rinehart (14), De'Jour Young (13) and Anna Lappenküper (10)  
**Four in double figures ..... at North Dakota State, 1/7/2017**  
**...De'Jour Young (16), Zaria Atkins (12), Anna Lappenküper (12) and Yuleska Ramirez-Tejeda (10)**

Five in double figures ..... at Michigan State, 12/1/2013; Amanda Hyde (23),  
..... Haley Seibert (14), Rachel Mauk (14), Ariana Simmons (12), and Mur Hagerman (10)  
Six in double figures ..... vs. Trine, 12/30/2014; Keanna Gary (23), Kamilah Carter (20),  
..... Haley Seibert (12), Allyson Bunch (11), Courtney Ogle (10), and Brett Green (10)

**Scored ≥ 25 points/quarter ..... 25, 4th quarter, vs. Denver, 1/12/2017**  
Scored ≥ 50 points/half ..... 50, 1st half, vs. Grace, 11/16/2015  
Scored ≥ 100 points ..... 101, vs. Indiana Tech, 12/11/2013  
Scored ≥ 100 points/road game ..... 112, at Indiana-South Bend, 1/9/2002  
Scored ≥ 100 points/neutral site ..... 106, vs. Western Illinois, 3/10/2013 (@ Souix Falls, S.D.)  
**Scored < 10 points/quarter ..... 7, 3rd quarter, vs. Denver, 1/12/2017**  
**Scored ≤ 15 points/quarter ..... 14, 4th quarter, at South Dakota, 1/18/2017**  
**Scored ≤ 20 points/half ..... 20, 2nd half, at South Dakota State, 1/5/2017**  
**Scored ≤ 30 points/half ..... 27, 2nd half, at South Dakota, 1/18/2017**  
**Scored ≤ 50 points/game ..... 47, vs. Miami (Ohio), 12/19/2016**

## FIELD GOAL SHOOTING

**Shot ≥ 60%/quarter ..... .636 (7-of-11), 2nd quarter, vs. Western Illinois, 12/28/2016**  
Shot ≥ 70%/quarter ..... —  
Shot ≥ 60%/half ..... 600 (12-of-20), 2nd half, at South Dakota State, 2/8/2015  
Shot ≥ 70%/half ..... .741 (20-of-27), 2nd half, vs. Indiana Tech, 12/11/2013  
Shot ≥ 60%/game ..... .625 (30-of-48), vs. Western Illinois, 2/21/2009  
Shot ≥ 70%/game ..... .720 (36-of-50), vs. IUPUI, 1/23/1992  
**Shot ≤ 20%/quarter ..... .071 (1-of-14), 3rd quarter, vs. Denver, 1/12/2017**  
**Shot ≤ 20%/half ..... .185 (5-27), 1st half, at Western Michigan, 12/6/2016**  
**Shot ≤ 30%/quarter ..... .231 (3-of-13), 2nd quarter, at South Dakota, 1/18/2017**  
**Shot ≤ 30%/half ..... .206 (7-of-34), 2nd half, at South Dakota State, 1/5/2017**  
**Shot ≤ 30%/game ..... .288 (19-of-66), at South Dakota State, 1/5/2017**  
Shot ≤ 40%/game and won ..... .377 (23-of-61), vs. Denver, 1/30/2016  
Shot ≤ 30%/game and won ..... .288 (15-of-52), vs. Oral Roberts, 2/17/2016

## THREE-POINTERS

Made 6 ..... Kamilah Carter (6), vs. South Dakota, 2/25/2016  
Made 7 ..... Haley Seibert (7), at Omaha, 1/30/2014  
Made 8 ..... Anne Boese (8), vs. Butler, 11/20/2011  
Player Made 9 ..... Jamie Holderman (9), vs. SIU-Edwardsville, 2/1/2001  
**Attempted ≥ 10 ..... Anna Lappenküper (10), at South Dakota State, 1/5/2017**  
Attempted ≥ 15 ..... Anne Boese (17), at Oral Roberts, 12/29/2010  
Fort Wayne Made ≥ 15 ..... 16, at Chicago State, 12/4/2014  
**Fort Wayne Did not make a three-pointer ..... at Western Michigan, 12/6/2016**  
Fort Wayne Attempted ≥ 30 ..... 30, at South Dakota State, 2/13/2016  
Fort Wayne Attempted ≥ 44 ..... 48, vs. Bowling Green, 11/19/2004  
**Fort Wayne Shot 60% (min. 10 att.) ..... 600 (6-of-10), vs. Defiance, 11/12/2016**

## FREE THROWS

Made 10-of-10 or better ..... 10-10, Josie Fisher, vs. North Dakota State, 2/27/2016  
**Fort Wayne Shot 90% (min. 10 atts) ..... .944 (17-of-18), at South Dakota, 1/18/2017**  
Fort Wayne Shot ≤ 50% ..... .222 (2-of-9), at Omaha, 2/11/2016  
Fort Wayne Made ≥ 40 ..... 40 (attempted 48) vs. Southern Indiana, 2/6/1992  
**Fort Wayne Made ≤ 5 FTs ..... 4 (attempted 5), vs. Western Illinois, 12/28/2016**  
Fort Wayne Attempted ≥ 50 FTs ..... 52 (made 42), vs. Northern Kentucky, 12/21/1995  
**Fort Wayne Attempted ≤ 5 FTs ..... 5 (made 4), vs. Western Illinois, 12/28/2016**

## REBOUNDS

**Had ≥ 10 rebounds ..... De'Jour Young (11), vs. Denver, 1/12/2017**  
Two Players Had ≥ 10 rebounds ..... vs. USC Upstate, 11/21/2015  
..... Courtney Ogle (10) and De'Jour Young (10)  
Three Players Had ≥ 10 rebounds ..... at Saint Joseph's (IN), 2/9/1999  
..... Angie Womack (12), Katie Bruening (12), and Laura Douglas (10)  
Had ≥ 15 rebounds ..... Keanna Gary (16), at Denver, 1/9/2016  
Had ≥ 20 rebounds ..... Verea Bibbs (23), vs. UALR, 11/28/2003  
Had 10 rebounds in consecutive games ..... Keanna Gary  
..... (16), at Denver, 1/9/2016 and (11) vs. South Dakota State, 1/13/2016  
Had 10 rebounds in three consecutive games ..... Keanna Gary  
..... (16) vs. Western Illinois, 1/7/2016; (16), at Denver, 1/9/2016; and (11) vs. South Dakota State, 1/13/2016  
Had 10 rebounds in four consecutive games ..... Keanna Gary  
..... (10), vs. IUPUI, 1/1/2016; (16), vs. Western Illinois, 1/7/2016;  
..... (16), at Denver, 1/9/2016; and (11) vs. South Dakota State, 1/13/2016  
Had 10 rebounds in five consecutive games ..... Lisa Miller  
..... (13) at Kentucky Wesleyan, 2/18/1989; (10) vs. Northern Kentucky, 2/23/1989;  
..... (13) vs. Ashland, 2/25/1989; (16) vs. Wayne State, 2/28/1989; and (12) vs. Taylor, 11/17/1989  
Fort Wayne had ≥ 60 rebounds ..... vs. Shippensburg (65), 11/19/1995

## DOUBLE-DOUBLES

**Last Player ..... De'Jour Young (20 pts/11 rbs), vs. Denver, 1/12/2017**  
**Points & Rebounds ..... De'Jour Young (20 pts/11 rbs), vs. Denver, 1/12/2017**  
Points & Assists ..... Maggie Bruening (12 pts/10 ast), vs. Morehead State, 1/5/2004  
Points & Steals ..... Kayla Drake (27 pts/10 stl), at South Dakota State, 1/22/2011  
Rebounds & Assists ..... Lindsay Wertz (10 rbs/10 ast), at Quincy, 2/17/2001  
Double-double in consecutive games ..... Keanna Gary  
..... (10 pts/10 rbs), vs. IUPUI, 1/1/2016; (10 pts/16 rbs), vs. Western Illinois, 1/7/2016  
Double-double in three consecutive games ..... Stephanie Rosado  
..... (14 pts/10 rbs), vs. Akron, 11/15/2010; (22 pts/12 rbs), at Youngstown State, 11/20/2010;  
..... (31 pts/13 rbs), vs. Indiana Tech, 11/23/2010  
Double-double in four consecutive games ..... Sarah Turner  
..... (16 pts/11 rbs), vs. Ashland, 1/4/1988; (22 pts/13 rbs), vs. Lewis, 1/9/1988;  
..... (15 pts/10 rbs), vs. Huntington 1/16/1988; (17 pts/10 rbs), vs. Kentucky Wesleyan, 1/21/1988  
Two players had double-doubles ..... at North Dakota State, 1/9/2014  
..... Amanda Hyde (35 pts/10 rbs) and Stefanie Mauk (12 pts/10 rbs)  
Three players had double-doubles ..... vs. Taylor, 11/17/1989 (@ Huntington, Ind.)  
..... Lisa Miller (20 pts/12 rbs), Robin Scott (14 pts/10 rbs), and Pam Edwards (11 pts/11 rbs)  
30 points and 10 rebounds ..... Amanda Hyde (35 pts/10 rbs), at North Dakota State, 1/9/2014  
20 points and 15 rebounds ..... Stefanie Mauk (20 pts/15 rbs), vs. Rochester, 12/22/2012  
30 points and 15 rebounds ..... Pam Edwards (31 pts/18 rbs), vs. Ashland, 1/25/1992

## ASSISTS

Had ≥ 8 assists ..... Rachel Rinehart (8), vs. Western Illinois, 1/2/2015  
Had ≥ 9 assists ..... Amanda Hyde (9), at Detroit, 12/21/2013  
Had ≥ 10 assists ..... Jordan Zuppe (11), vs. Oral Roberts, 1/29/2011  
Had ≥ 15 assists ..... Wendy Recker (15), vs. Southern Indiana, 1/28/1995  
Had 10 assists in consecutive games ..... Maggie Bruening  
..... (10), vs. Morehead State, 1/5/2004; (10), vs. Air Force, 1/7/2004  
Fort Wayne had 20-24 assists ..... 20, vs. Kent State, 11/19/2015  
Fort Wayne had 25-29 assists ..... 28, vs. Kalamazoo, 12/2/2005  
Fort Wayne had ≥ 30 assists ..... 31, vs. Southern Indiana, 2/7/1991  
**Fort Wayne had < 10 assists ..... 6, at Wright State, 12/20/2016**  
**Fort Wayne had ≤ 5 assists ..... 4, at Oral Roberts, 12/31/2016**

## BLOCKED SHOTS

Blocked 5-6 shots ..... Ariana Simmons (5), vs. Ball State, 12/29/2013  
Blocked ≥ 7 shots ..... Stephanie Rosado (8), vs. Indiana Tech, 11/23/2010  
Fort Wayne blocked ≥ 10 shots ..... 11, vs. Indiana Tech, 11/23/2010

## STEALS

**Had 5 steals ..... Rachel Rinehart vs. Western Illinois, 12/28/2016**  
Had 6 steals ..... Rachel Rinehart at Milwaukee, 12/28/2015  
Had 7 steals ..... Haley Seibert at North Dakota State, 1/17/2015  
Had ≥ 8 steals ..... Kayla Drake (10), at South Dakota State, 1/22/2011  
Two Players Had ≥ 5 steals ..... at Milwaukee, 12/28/2015  
..... Rachel Rinehart (6) and Josie Fisher (5)  
Had 5 steals in consecutive games ..... Kayla Drake  
..... (10), at South Dakota State, 1/22/2011; (6), at North Dakota State, 1/24/2011  
Fort Wayne had ≥ 20 steals ..... 21, at Milwaukee, 12/28/2015

## TURNOVERS

**Committed ≥ 20 turnovers ..... 22, vs. Western Illinois, 12/28/2016**  
**Committed ≥ 25 turnovers ..... 25, vs. Oakland, 11/19/2016**  
Committed ≤ 5 turnovers ..... 5, at Western Illinois, 2/4/2016  
**Committed < 10 turnovers ..... 9, at North Dakota State, 1/7/2017**

## OVERTIME

Played an OT game ..... at Denver (L, 53-50), 1/9/2016  
Played multiple overtimes ..... at North Dakota State (W, 98-89, 2ot), 1/9/2014  
Won an OT game ..... at North Dakota State (W, 98-89, 2ot), 1/9/2014  
Won in multiple overtimes ..... at North Dakota State (W, 98-89, 2ot), 1/9/2014  
Won an OT game at home ..... vs. UMKC (W, 82-76), 12/3/2011  
Won an OT game at neutral site ..... vs. Western Illinois (W, 106-101, 2ot), 3/10/2013  
Won an OT game on the road ..... at North Dakota State (W, 98-89, 2ot), 1/9/2014  
Lost an OT game ..... at Denver (L, 53-50), 1/9/2016  
Lost in multiple overtimes ..... at Hampton (L, 78-77, 2ot), 12/19/2010  
Lost an OT game at home ..... vs. Detroit (L, 81-74), 12/2/2014  
Lost an OT game on the road ..... at Denver (L, 53-50), 1/9/2016



1

YULESKA RAMIREZ-TEJEDA

Freshman | 5-7  
Cambridge, Mass.  
Cambridge Rindge and Latin

GUARD

SEASON HIGH	CATEGORY	CAREER HIGH
24, at South Dakota, 1/18/2017	Minutes	24, at South Dakota, 1/18/2017
10, at North Dakota State, 1/7/2017	Points	10, at North Dakota State, 1/7/2017
7, vs. Denver, 1/12/2017	Rebounds	7, vs. Denver, 1/12/2017
1, three times	Assists	1, three times
3, at North Dakota State, 1/7/2017	Steals	3, at North Dakota State, 1/7/2017
1, at North Dakota State, 1/7/2017	Blocks	1, at North Dakota State, 1/7/2017
5, at North Dakota State, 1/7/2017	FG Made	5, at North Dakota State, 1/7/2017
10, at North Dakota State, 1/7/2017	FG Attempts	10, at North Dakota State, 1/7/2017
	3-PT Made	
	3-PT Attempts	
4, at South Dakota, 1/18/2017	FT Made	4, at South Dakota, 1/18/2017
4, at South Dakota, 1/18/2017	FT Attempts	4, at South Dakota, 1/18/2017

## CAREER VS. ORAL ROBERTS

Season	gp-gs	min/avg	Total		3-Point		F-Throws		Rebounds											Scoring	
			fg-fga	pct	fg-fga	pct	ft-fga	pct	off	def	tot	avg	pf	fo	ast	to	blk	stl	pts	avg	
2016-17	1-0	21/21.0	1-2	.500	0-0	.000	0-0	.000	1	3	4	4.0	0	0	0	1	0	0	2	2.0	
TOTAL	1-0	21/21.0	1-2	.500	0-0	.000	0-0	.000	1	3	4	4.0	0	0	0	1	0	0	2	2.0	

SINGLE-GAME HIGHS [all-time ranking]:  
Points: 2, at Oral Roberts -- 12/31/16  
Rebounds: 4, at Oral Roberts -- 12/31/16  
FG made: 1, at Oral Roberts -- 12/31/16  
FG attempts: 2, at Oral Roberts -- 12/31/16

## SEASON STATS

Opponent	Date	qs	min	Total		3-Pointers		Free throws		Rebounds											pts	avg
				fg-fga	pct	3fg-fga	pct	ft-fga	pct	off	def	tot	avg	pf	a	t/o	blk	stl				
BELMONT	11/11/16	17	0-4	.000	0-0	.000	2-2	1.000	1	3	4	4.0	3	1	1	0	0	2	2.0			
DEFIANCE	11/12/16	11	3-5	.600	0-0	.000	1-1	1.000	1	0	1	2.5	1	0	0	0	0	7	4.5			
TRINE	11/14/16	6	0-0	.000	0-0	.000	2-2	1.000	0	2	2	2.3	3	0	0	0	0	2	3.7			
at Butler	11/16/16	10	3-4	.750	0-0	.000	0-0	.000	0	1	1	2.0	2	0	1	0	1	6	4.3			
OAKLAND	11/19/16	11	0-4	.000	0-0	.000	0-0	.000	0	1	1	1.8	0	0	0	0	0	0	3.4			
COASTAL CAROLINA	11/26/16	5	0-2	.000	0-0	.000	0-0	.000	0	0	0	1.5	0	0	1	0	1	0	2.8			
at Kent State	11/30/16	9	0-0	.000	0-0	.000	0-0	.000	1	3	4	1.9	1	0	1	0	0	0	2.4			
at Illinois	12/02/16	4	0-0	.000	0-0	.000	0-0	.000	0	2	2	1.9	0	0	1	0	0	0	2.1			
at Western Michigan	12/06/16	1	0-0	.000	0-0	.000	0-0	.000	0	0	0	1.7	0	0	1	0	0	0	1.9			
at UIC	12/10/16	dnp	-	-	-	-	-	-	-	-	-	-	-	-	-	-	-	-	-			
vs Miami (Ohio)	12/19/16	11	0-3	.000	0-0	.000	0-0	.000	2	0	2	1.7	1	0	0	0	0	0	1.7			
at Wright State	12/20/16	dnp	-	-	-	-	-	-	-	-	-	-	-	-	-	-	-	-	-			
vs Eastern Kentucky	12/21/16	2	0-0	.000	0-0	.000	0-0	.000	0	0	0	1.5	0	0	0	0	0	0	1.5			
WESTERN ILLINOIS	12/28/16	4	0-0	.000	0-0	.000	0-0	.000	0	0	0	1.4	1	0	0	0	0	0	1.4			
at Oral Roberts	12/31/16	21	1-2	.500	0-0	.000	0-0	.000	1	3	4	1.6	0	0	1	0	0	2	1.5			
at South Dakota State	01/05/17	18	2-7	.286	0-0	.000	0-0	.000	2	2	4	1.8	0	0	2	0	0	4	1.6			
at North Dakota State	01/07/17	22	5-10	.500	0-0	.000	0-0	.000	1	3	4	1.9	2	1	1	1	3	10	2.2			
DENVER	01/12/17	16	1-4	.250	0-0	.000	0-0	.000	4	3	7	2.3	0	0	2	0	0	2	2.2			
at South Dakota	01/18/17	24	2-4	.500	0-0	.000	4-4	1.000	0	3	3	2.3	0	1	1	0	0	8	2.5			
Totals		0	192	17-49	.347	0-0	.000	9-9	1.000	13	26	39	2.3	14	3	13	1	5	43	2.5		

Games played: 17  
Minutes/game: 11.3  
Points/game: 2.5  
FG Pct: 34.7  
FT Pct: 100.0

Rebounds/game: 2.3  
Assists/game: 0.2  
Turnovers/game: 0.8  
Assist/turnover ratio: 0.2  
Steals/game: 0.3  
Blocks/game: 0.1

## CAREER STATS

			Total		3-Point		F-Throws		Rebounds											Scoring	
Season	gp-gs	min/avg	fg-fga	pct	fg-fga	pct	ft-fga	pct	off	def	tot	avg	pf	fo	ast	to	blk	stl	pts	avg	
2016-17	17-0	192/11.3	17-49	.347	0-0	.000	9-9	1.000	13	26	39	2.3	14	0	3	13	1	5	43	2.5	
TOTAL	17-0	192/11.3	17-49	.347	0-0	.000	9-9	1.000	13	26	39	2.3	14	0	3	13	1	5	43	2.5	





SEASON HIGH	CATEGORY	CAREER HIGH
39, vs Eastern Kentucky, 12/21/2016	Minutes	39, vs Eastern Kentucky, 12/21/2016
12, two times	Points	22, at Illinois, 11/14/2014
8, vs Defiance, 11/12/2016	Rebounds	14, at Illinois, 11/14/2014
2, at UIC, 12/10/2016	Assists	4, at Western Illinois, 1/31/2015
3, vs Defiance, 11/12/2016	Steals	3, four times
1, three times	Blocks	2, at Omaha, 2/11/2016
5, two times	FG Made	7, vs. USC Upstate, 11/21/2015
11, vs Belmont, 11/11/2016	FG Attempts	11, two times
2, two times	3-PT Made	4, vs. Grace, 11/18/2014
4, at UIC, 12/10/2016	3-PT Attempts	7, at Detroit, 12/9/2015
6, vs Eastern Kentucky, 12/21/2016	FT Made	11, at Illinois, 11/14/2014
6, vs Eastern Kentucky, 12/21/2016	FT Attempts	12, at Illinois, 11/14/2014

• Summit League Player of the Week (11/17/2014)

## CAREER VS. ORAL ROBERTS

Season	gp-gs	min/avg	Total fg-fga	pct	3-Point fg-fga	pct	F-Throws ft-fga	pct	Rebounds off	def	tot	avg	pf	fo	ast	to	blk	stl	pts	avg
2014-15	2-0	30/15.0	1-9	.111	0-6	.000	3-4	.750	0	3	3	1.5	7	0	3	0	0	4	5	2.5
2015-16	2-1	35/17.5	3-5	.600	1-2	.500	2-3	.667	0	3	3	1.5	9	1	1	5	0	0	9	4.5
2016-17	1-1	29/29.0	1-7	.143	0-1	.000	4-4	1.000	2	3	5	5.0	1	0	1	1	0	0	6	6.0
TOTAL	5-2	94/18.8	5-21	.238	1-9	.111	9-11	.818	2	9	11	2.2	17	1	5	6	0	4	20	4.0

SINGLE-GAME HIGHS [all-time ranking]:

Points: 8, at Oral Roberts -- 01/16/16

Rebounds: 5, at Oral Roberts -- 12/31/16

Assists: 2, at Oral Roberts -- 02/28/15

Steals: 3, Oral Roberts -- 01/11/15

FG made: 3, at Oral Roberts -- 01/16/16

FG attempts: 7, at Oral Roberts -- 12/31/16

3FG made: 1, at Oral Roberts -- 01/16/16

3FG attempts: 3, Oral Roberts -- 01/11/15; at Oral Roberts -- 02/28/15

FT made: 4, at Oral Roberts -- 12/31/16

FT attempts: 4, at Oral Roberts -- 12/31/16

## SEASON STATS

Opponent	Date	gs	min	Total		3-Pointers		Free throws		Rebounds												pts	avg
				fg-fga	pct	3fg-fga	pct	ft-fa	pct	off	def	tot	avg	pf	a	t/o	blk	stl					
BELMONT	11/11/16		23	5-11	.455	2-2	1.000	0-0	.000	0	4	4	4.0	4	1	0	0	0	12	12.0			
DEFIANCE	11/12/16	*	26	3-7	.429	2-3	.667	0-0	.000	2	6	8	6.0	2	1	1	1	3	8	10.0			
TRINE	11/14/16	*	19	1-6	.167	1-3	.333	0-0	.000	2	2	4	5.3	5	0	0	0	0	3	7.7			
at Butler	11/16/16	*	22	0-5	.000	0-1	.000	2-2	1.000	1	2	3	4.8	4	1	0	0	0	2	6.3			
OAKLAND	11/19/16	*	17	1-4	.250	0-0	.000	0-0	.000	0	2	2	4.2	3	1	1	0	2	2	5.4			
COASTAL CAROLINA	11/26/16	*	19	5-9	.556	1-2	.500	1-2	.500	0	1	1	3.7	2	1	2	0	1	12	6.5			
at Kent State	11/30/16	*	23	1-7	.143	0-2	.000	0-0	.000	0	1	1	3.3	3	0	2	0	2	2	5.9			
at Illinois	12/02/16	*	30	2-5	.400	1-2	.500	1-1	1.000	4	2	6	3.6	3	1	1	0	1	6	5.9			
at Western Michigan	12/06/16	*	18	1-3	.333	0-1	.000	0-0	.000	1	2	3	3.6	4	0	1	1	0	2	5.4			
at UIC	12/10/16	*	26	3-6	.500	1-4	.250	0-1	.000	2	5	7	3.9	2	2	2	0	0	7	5.6			
vs Miami (Ohio)	12/19/16	*	32	4-9	.444	0-3	.000	3-4	.750	3	1	4	3.9	3	0	1	0	2	11	6.1			
at Wright State	12/20/16	*	34	2-5	.400	0-0	.000	3-4	.750	0	5	5	4.0	4	0	3	0	0	7	6.2			
vs Eastern Kentucky	12/21/16	*	39	2-9	.222	0-2	.000	6-6	1.000	2	2	4	4.0	2	1	3	0	1	10	6.5			
WESTERN ILLINOIS	12/28/16	*	19	3-6	.500	1-2	.500	1-2	.500	2	4	6	4.1	3	1	2	0	1	8	6.6			
at Oral Roberts	12/31/16	*	29	1-7	.143	0-1	.000	4-4	1.000	2	3	5	4.2	1	1	1	0	0	6	6.5			
at South Dakota State	01/05/17	*	24	3-9	.333	0-1	.000	3-5	.600	4	2	6	4.3	5	1	0	0	1	9	6.7			
at North Dakota State	01/07/17	*	4	0-1	.000	0-0	.000	0-0	.000	0	1	1	4.1	0	0	1	1	0	0	6.3			
DENVER	01/12/17		dnp	-	-	-	-	-	-	-	-	-	-	-	-	-	-	-	-	-			
at South Dakota	01/18/17		dnp	-	-	-	-	-	-	-	-	-	-	-	-	-	-	-	-	-			
Totals		16	404	37-109	.339	9-29	.310	24-31	.774	25	45	70	4.1	50	12	21	3	14	107	6.3			

Games played: 17

Minutes/game: 23.8

Points/game: 6.3

FG Pct: 33.9

3FG Pct: 31.0

FT Pct: 77.4

Rebounds/game: 4.1

Assists/game: 0.7

Turnovers/game: 1.2

Assist/turnover ratio: 0.6

Steals/game: 0.8

Blocks/game: 0.2

## CAREER STATS

Season	gp-gs	min/avg	Total fg-fga	pct	3-Point fg-fga	pct	F-Throws ft-fga	pct	Rebounds off	def	tot	avg	pf	fo	ast	to	blk	stl	pts	avg
2014-15	30-4	503/16.8	41-129	.318	19-62	.306	45-65	.692	27	75	102	3.4	97	4	29	52	4	12	146	4.9
2015-16	29-19	568/19.6	47-142	.331	21-66	.318	34-46	.739	21	63	84	2.9	84	4	22	36	3	21	149	5.1
2016-17	17-16	404/23.8	37-109	.339	9-29	.310	24-31	.774	25	45	70	4.1	50	2	12	21	3	14	107	6.3
TOTAL	76-39	1475/19.4	125-380	.329	49-157	.312	103-142	.725	73	183	256	3.4	231	10	63	109	10	47	402	5.3





# 12

## ANNA LAPPENKÜPER

Freshman | 5-8  
Herne, Germany  
Otto Hahn Gymnasium

**GUARD**

SEASON HIGH	CATEGORY	CAREER HIGH
40, at North Dakota State, 1/7/2016	Minutes	40, at North Dakota State, 1/7/2016
13, vs Western Illinois, 12/28/2016	Points	13, vs Western Illinois, 12/28/2016
5, two times	Rebounds	5, two times
5, two times	Assists	5, two times
3, at North Dakota State, 1/7/2016	Steals	3, at North Dakota State, 1/7/2016
1, two times	Blocks	1, two times
5, two times	FG Made	5, two times
15, at South Dakota State, 1/5/2017	FG Attempts	15, at South Dakota State, 1/5/2017
3, vs Western Illinois, 12/28/2016	3-PT Made	3, vs Western Illinois, 12/28/2016
10, at South Dakota State, 1/5/2017	3-PT Attempts	10, at South Dakota State, 1/5/2017
7, at Oral Roberts, 12/31/2016	FT Made	7, at Oral Roberts, 12/31/2016
8, at Oral Roberts, 12/31/2016	FT Attempts	8, at Oral Roberts, 12/31/2016

• Competed for Germany's U16 and U18 National teams

## CAREER VS. ORAL ROBERTS

Season	gp-gs	min/avg	Total fg-fga	pct	3-Point fg-fga	pct	F-Throws ft-fa	pct	Rebounds off	def	tot	avg	pf	fo	ast	to	blk	stl	Scoring pts	avg
2016-17	1-1	28/28.0	2-3	.667	0-1	.000	7-8	.875	0	3	3	3.0	5	1	0	1	0	0	11	11.0
TOTAL	1-1	28/28.0	2-3	.667	0-1	.000	7-8	.875	0	3	3	3.0	5	1	0	1	0	0	11	11.0

SINGLE-GAME HIGHS [all-time ranking]:  
Points: 11, at Oral Roberts -- 12/31/16  
Rebounds: 3, at Oral Roberts -- 12/31/16  
FG made: 2, at Oral Roberts -- 12/31/16  
FG attempts: 3, at Oral Roberts -- 12/31/16  
3FG attempts: 1, at Oral Roberts -- 12/31/16  
FT made: 7, at Oral Roberts -- 12/31/16  
FT attempts: 8, at Oral Roberts -- 12/31/16

## SEASON STATS

Opponent	Date	gs	min	Total		3-Pointers		Free throws		Rebounds				pf	a	t/o	blk	stl	pts	avg	
				fg-fga	pct	3fg-fga	pct	ft-fa	pct	off	def	tot	avg								
BELMONT	11/11/16	*	33	1-4	.250	0-1	.000	0-0	.000	0	5	5	5.0	2	5	4	0	1	2	2.0	
DEFIANCE	11/12/16	*	26	2-8	.250	0-2	.000	2-2	1.000	1	3	4	4.5	0	5	2	1	0	6	4.0	
TRINE	11/14/16	*	24	2-5	.400	0-1	.000	2-2	1.000	0	1	1	3.3	5	0	3	0	0	6	4.7	
at Butler	11/16/16	*	31	2-4	.500	1-2	.500	0-0	.000	0	2	2	3.0	3	0	4	0	2	5	4.8	
OAKLAND	11/19/16	*	32	2-6	.333	0-1	.000	0-0	.000	0	1	1	2.6	1	3	6	0	2	4	4.6	
COASTAL CAROLINA	11/26/16	*	29	3-7	.429	0-1	.000	0-0	.000	0	2	2	2.5	2	3	4	0	1	6	4.8	
at Kent State	11/30/16	*	19	0-3	.000	0-1	.000	0-0	.000	0	0	0	2.1	2	1	3	0	1	0	4.1	
at Illinois	12/02/16		25	3-6	.500	1-2	.500	0-0	.000	0	1	1	2.0	0	0	5	0	0	7	4.5	
at Western Michigan	12/06/16		26	0-4	.000	0-2	.000	0-0	.000	0	5	5	2.3	1	0	5	1	0	0	4.0	
at UIC	12/10/16		20	1-3	.333	0-1	.000	2-2	1.000	1	2	3	2.4	2	2	1	0	0	4	4.0	
vs Miami (Ohio)	12/19/16		34	1-7	.143	0-3	.000	3-6	.500	1	2	3	2.5	2	1	2	0	0	5	4.1	
at Wright State	12/20/16	*	29	3-4	.750	0-1	.000	0-0	.000	1	2	3	2.5	3	1	3	0	0	6	4.3	
vs Eastern Kentucky	12/21/16		21	2-4	.500	2-3	.667	0-0	.000	0	2	2	2.5	1	0	4	0	1	6	4.4	
WESTERN ILLINOIS	12/28/16	*	36	5-8	.625	3-4	.750	0-0	.000	0	3	3	2.5	1	0	7	0	1	13	5.0	
at Oral Roberts	12/31/16	*	28	2-3	.667	0-1	.000	7-8	.875	0	3	3	2.5	5	0	1	0	0	11	5.4	
at South Dakota State	01/05/17	*	39	5-15	.333	2-10	.200	0-0	.000	0	4	4	2.6	3	0	1	0	2	12	5.8	
at North Dakota State	01/07/17	*	40	4-11	.364	2-5	.400	2-2	1.000	0	2	2	2.6	3	3	3	0	3	12	6.2	
DENVER	01/12/17	*	28	3-7	.429	1-3	.333	0-0	.000	0	2	2	2.6	4	2	1	0	0	7	6.2	
at South Dakota	01/18/17	*	33	4-14	.286	2-7	.286	0-0	.000	1	0	1	2.5	1	0	3	0	0	10	6.4	
Totals			14	553	45-123	.366	14-51	.275	18-22	.818	5	42	47	2.5	41	26	62	2	14	122	6.4

Games played: 19  
Minutes/game: 29.1  
Points/game: 6.4  
FG Pct: 36.6  
3FG Pct: 27.5  
FT Pct: 81.8

Rebounds/game: 2.5  
Assists/game: 1.4  
Turnovers/game: 3.3  
Assist/turnover ratio: 0.4  
Steals/game: 0.7  
Blocks/game: 0.1

## CAREER STATS

Season	gp-gs	min/avg	Total fg-fga	pct	3-Point fg-fga	pct	F-Throws ft-fa	pct	Rebounds off	def	tot	avg	pf	fo	ast	to	blk	stl	Scoring pts	avg
2016-17	19-14	553/29.1	45-123	.366	14-51	.275	18-22	.818	5	42	47	2.5	41	2	26	62	2	14	122	6.4
TOTAL	19-14	553/29.1	45-123	.366	14-51	.275	18-22	.818	5	42	47	2.5	41	2	26	62	2	14	122	6.4



SEASON HIGH	CATEGORY	CAREER HIGH
39, at Wright State, 12/20/2016	Minutes	39, at Wright State, 12/20/2016
21, vs Oakland, 11/19/2016	Points	21, vs Oakland, 11/19/2016
11, vs. Denver, 1/12/2017	Rebounds	11, vs. Denver, 1/12/2017
5, three times	Assists	5, three times
3, vs Trine, 11/14/2016	Steals	5, vs. Grace, 11/16/2015
1, two times	Blocks	2, two times
7, four times	FG Made	7, four times
18, vs Western Illinois, 12/28/2016	FG Attempts	18, vs Western Illinois, 12/28/2016
3, vs Oakland, 11/19/2016	3-PT Made	3, vs Oakland, 11/19/2016
5, two times	3-PT Attempts	5, two times
8, vs Oakland, 11/19/2016	FT Made	8, vs Oakland, 11/19/2016
10, vs Oakland, 11/19/2016	FT Attempts	10, vs Oakland, 11/19/2016

## CAREER VS. ORAL ROBERTS

Season	gp-gs	min/avg	Total fg-fga	pct	3-Point fg-fga	pct	F-Throws ft-fga	pct	Rebounds off	def	tot	avg	pf	fo	ast	to	blk	stl	pts	avg
2015-16	2-2	60/30.0	5-13	.385	3-3	1.000	3-5	.600	2	6	8	4.0	5	0	1	2	2	1	16	8.0
2016-17	1-1	31/31.0	2-4	.500	0-0	.000	4-4	1.000	1	2	3	3.0	1	0	2	4	0	2	8	8.0
TOTAL	3-3	91/30.3	7-17	.412	3-3	1.000	7-9	.778	3	8	11	3.7	6	0	3	6	2	3	24	8.0

SINGLE-GAME HIGHS [all-time ranking]:

Points: 8, at Oral Roberts -- 01/16/16; Oral Roberts -- 02/17/16; at Oral Roberts -- 12/31/16

Rebounds: 6, Oral Roberts -- 02/17/16

Assists: 2, at Oral Roberts -- 12/31/16

Steals: 2, at Oral Roberts -- 12/31/16

Blocks: 2, at Oral Roberts -- 01/16/16

FG made: 3, Oral Roberts -- 02/17/16

FG attempts: 8, at Oral Roberts -- 01/16/16

3FG made: 2, Oral Roberts -- 02/17/16

3FG attempts: 2, Oral Roberts -- 02/17/16

FT made: 4, at Oral Roberts -- 12/31/16

FT attempts: 4, at Oral Roberts -- 01/16/16; at Oral Roberts -- 12/31/16

## SEASON STATS

				Total		3-Pointers		Free throws		Rebounds											
Opponent	Date	qs	min	fg-fga	pct	3fg-fga	pct	ft-fa	pct	off	def	tot	avg	pf	a	t/o	blk	stl	pts	avg	
BELMONT	11/11/16	*	25	4-9	.444	0-2	.000	2-2	1.000	3	3	6	6.0	3	1	1	0	0	10	10.0	
DEFIANCE	11/12/16	*	16	6-9	.667	1-1	1.000	0-0	.000	3	1	4	5.0	1	3	2	0	0	13	11.5	
TRINE	11/14/16	*	28	6-13	.462	2-5	.400	2-2	1.000	0	1	1	3.7	4	0	3	0	3	16	13.0	
at Butler	11/16/16	*	13	1-3	.333	0-0	.000	0-0	.000	0	0	0	2.8	1	1	1	0	0	2	10.3	
OAKLAND	11/19/16	*	32	5-9	.556	3-5	.600	8-10	.800	2	3	5	3.2	4	1	4	0	0	21	12.4	
COASTAL CAROLINA	11/26/16	*	32	2-5	.400	0-2	.000	4-4	1.000	1	6	7	3.8	3	0	4	0	1	8	11.7	
at Kent State	11/30/16	*	22	4-6	.667	1-3	.333	3-4	.750	0	1	1	3.4	3	1	2	0	2	12	11.7	
at Illinois	12/02/16	*	34	3-13	.231	0-4	.000	5-6	.833	2	3	5	3.6	1	2	3	0	0	11	11.6	
at Western Michigan	12/06/16	*	33	3-12	.250	0-4	.000	3-3	1.000	2	5	7	4.0	1	1	2	0	0	9	11.3	
at UIC	12/10/16	*	36	7-15	.467	1-4	.250	2-2	1.000	2	7	9	4.5	1	4	3	0	1	17	11.9	
vs Miami (Ohio)	12/19/16	*	22	3-8	.375	0-3	.000	0-0	.000	2	1	3	4.4	2	1	2	0	0	6	11.4	
at Wright State	12/20/16	*	39	4-7	.571	0-2	.000	6-6	1.000	1	3	4	4.3	0	1	5	0	0	14	11.6	
vs Eastern Kentucky	12/21/16	*	38	7-12	.583	0-1	.000	5-6	.833	1	8	9	4.7	3	1	1	0	2	19	12.2	
WESTERN ILLINOIS	12/28/16	*	36	7-18	.389	1-4	.250	0-0	.000	0	5	5	4.7	3	0	2	0	1	15	12.4	
at Oral Roberts	12/31/16	*	31	2-4	.500	0-0	.000	4-4	1.000	1	2	3	4.6	1	2	4	0	2	8	12.1	
at South Dakota State	01/05/17	*	30	3-9	.333	0-1	.000	0-0	.000	0	6	6	4.7	4	5	2	0	2	6	11.7	
at North Dakota State	01/07/17	*	38	6-14	.429	0-2	.000	4-4	1.000	2	3	5	4.7	2	5	1	0	0	16	11.9	
DENVER	01/12/17	*	38	7-17	.412	1-3	.333	5-7	.714	5	6	11	5.1	5	5	1	1	0	20	12.4	
at South Dakota	01/18/17	*	28	6-16	.375	0-2	.000	1-1	1.000	0	2	2	4.9	4	3	3	1	0	13	12.4	
Totals		19	571	86-199	.432	10-48	.208	54-61	.885	27	66	93	4.9	46	37	46	2	14	236	12.4	

Games played: 19  
Minutes/game: 30.1  
Points/game: 12.4  
FG Pct: 43.2  
3FG Pct: 20.8  
FT Pct: 88.5

Rebounds/game: 4.9  
Assists/game: 1.9  
Turnovers/game: 2.4  
Assist/turnover ratio: 0.8  
Steals/game: 0.7  
Blocks/game: 0.1

## CAREER STATS

Season	gp-gs	min/avg	Total fg-fga	pct	3-Point fg-fga	pct	F-Throws ft-fga	pct	Rebounds off	def	tot	avg	pf	fo	ast	to	blk	stl	pts	avg
2015-16	30-21	688/22.9	72-176	.409	8-19	.421	51-72	.708	55	52	107	3.6	69	1	34	34	8	33	203	6.8
2016-17	19-19	571/30.1	86-199	.432	10-48	.208	54-61	.885	27	66	93	4.9	46	1	37	46	2	14	236	12.4
TOTAL	49-40	1259/25.7	158-375	.421	18-67	.269	105-133	.789	82	118	200	4.1	115	2	71	80	10	47	439	9.0



**SELENA  
LOZADA**

**15**

Senior | 6-2  
 Perth Amboy, N.J.  
 Western Guilford  
 Guilford Technical CC

**FORWARD**

SEASON HIGH	CATEGORY	CAREER HIGH
30, two times	Minutes	30, two times
12, two times	Points	13, vs. Trine, 11/16/2015
7, two times	Rebounds	7, two times
3, vs Eastern Kentucky, 12/21/2016	Assists	3, vs Eastern Kentucky, 12/21/2016
1, seven times	Steals	2, two times
3, vs Western Illinois, 12/28/2016	Blocks	3, vs Western Illinois, 12/28/2016
6, two times	FG Made	6, two times
17, at Oral Roberts, 12/31/2016	FG Attempts	17, at Oral Roberts, 12/31/2016
—	3-PT Made	—
1, at Illinois, 12/2/2016	3-PT Attempts	1, at Illinois, 12/2/2016
4, at Kent State, 11/30/2016	FT Made	7, vs. Trine, 11/16/2015
8, vs Defiance, 11/12/2016	FT Attempts	10, vs. Trine, 11/16/2015

• Named to the 2015-16 Summit League Winter/Spring Academic Honor Roll

## CAREER VS. ORAL ROBERTS

			Total		3-Point		F-Throws		Rebounds											Scoring	
Season	gp-gs	min/avg	fg-fga	pct	fg-fga	pct	ft-fga	pct	off	def	tot	avg	pf	fo	ast	to	blk	stl	pts	avg	
2015-16	1-0	4/4.0	0-1	.000	0-0	.000	0-0	.000	0	1	1	1.0	3	0	0	0	0	0	0	0.0	
2016-17	1-0	20/20.0	6-17	.353	0-0	.000	0-0	.000	3	3	6	6.0	3	0	0	1	1	1	12	12.0	
TOTAL	2-0	24/12.0	6-18	.333	0-0	.000	0-0	.000	3	4	7	3.5	6	0	0	1	1	1	12	6.0	

SINGLE-GAME HIGHS [all-time ranking]:

Points: 12, at Oral Roberts -- 12/31/16

Rebounds: 6, at Oral Roberts -- 12/31/16

Steals: 1, at Oral Roberts -- 12/31/16

Blocks: 1, at Oral Roberts -- 12/31/16

FG made: 6, at Oral Roberts -- 12/31/16

FG attempts: 17, at Oral Roberts -- 12/31/16

## SEASON STATS

Opponent	Date	gs	min	Total		3-Pointers		Free throws		Rebounds										
				fg-fga	pct	3fg-fga	pct	ft-fga	pct	off	def	tot	avg	pf	a	t/o	blk	stl	pts	avg
BELMONT	11/11/16	*	28	6-15	.400	0-0	.000	0-2	.000	3	3	6	6.0	5	1	0	1	1	12	12.0
DEFIANCE	11/12/16	*	13	2-6	.333	0-0	.000	3-8	.375	2	2	4	5.0	2	0	1	0	1	7	9.5
TRINE	11/14/16	*	16	3-6	.500	0-0	.000	0-0	.000	2	3	5	5.0	3	1	1	2	0	6	8.3
at Butler	11/16/16	*	12	1-3	.333	0-0	.000	0-0	.000	0	0	0	3.8	2	0	1	0	0	2	6.8
OAKLAND	11/19/16		20	4-6	.667	0-0	.000	1-3	.333	3	2	5	4.0	2	0	1	0	1	9	7.2
COASTAL CAROLINA	11/26/16	*	15	2-7	.286	0-0	.000	3-3	1.000	6	0	6	4.3	4	1	1	1	1	7	7.2
at Kent State	11/30/16	*	27	2-3	.667	0-0	.000	4-4	1.000	1	5	6	4.6	4	0	2	1	0	8	7.3
at Illinois	12/02/16	*	25	0-3	.000	0-1	.000	0-0	.000	1	1	2	4.3	2	0	2	1	0	0	6.4
at Western Michigan	12/06/16	*	26	2-5	.400	0-0	.000	0-0	.000	2	0	2	4.0	4	0	2	0	0	4	6.1
at UIC	12/10/16	*	25	2-5	.400	0-0	.000	1-1	1.000	1	3	4	4.0	3	0	2	0	0	5	6.0
vs Miami (Ohio)	12/19/16	*	23	0-2	.000	0-0	.000	3-4	.750	0	1	1	3.7	4	0	2	0	0	3	5.7
at Wright State	12/20/16		21	2-5	.400	0-0	.000	1-2	.500	2	0	2	3.6	4	0	2	1	1	5	5.7
vs Eastern Kentucky	12/21/16	*	30	1-4	.250	0-0	.000	0-2	.000	3	4	7	3.8	2	3	4	0	1	2	5.4
WESTERN ILLINOIS	12/28/16		18	0-2	.000	0-0	.000	0-0	.000	0	4	4	3.9	0	0	1	3	0	0	5.0
at Oral Roberts	12/31/16		20	6-17	.353	0-0	.000	0-0	.000	3	3	6	4.0	3	0	1	1	1	12	5.5
at South Dakota State	01/05/17	dnp		-	-	-	-	-	-	-	-	-	-	-	-	-	-	-	-	-
at North Dakota State	01/07/17	dnp		-	-	-	-	-	-	-	-	-	-	-	-	-	-	-	-	-
DENVER	01/12/17	*	22	3-11	.273	0-0	.000	3-3	1.000	2	2	4	4.0	4	0	1	1	0	9	5.7
at South Dakota	01/18/17	*	30	2-5	.400	0-0	.000	3-3	1.000	3	4	7	4.2	0	0	0	1	1	7	5.8
Totals		13	371	38-105	.362	0-1	.000	22-35	.629	34	37	71	4.2	48	6	24	13	8	98	5.8

Games played: 17  
 Minutes/game: 21.8  
 Points/game: 5.8  
 FG Pct: 36.2  
 3FG Pct: 0.0  
 FT Pct: 62.9

Rebounds/game: 4.2  
 Assists/game: 0.4  
 Turnovers/game: 1.4  
 Assist/turnover ratio: 0.3  
 Steals/game: 0.5  
 Blocks/game: 0.8

## CAREER STATS

			Total		3-Point		F-Throws		Rebounds											Scoring	
Season	gp-gs	min/avg	fg-fga	pct	fg-fga	pct	ft-fga	pct	off	def	tot	avg	pf	fo	ast	to	blk	stl	pts	avg	
2015-16	25-6	251/10.0	21-71	.296	0-0	.000	18-36	.500	13	27	40	1.6	41	0	2	15	4	5	60	2.4	
2016-17	17-13	371/21.8	38-105	.362	0-1	.000	22-35	.629	34	37	71	4.2	48	1	6	24	13	8	98	5.8	
TOTAL	42-19	622/14.8	59-176	.335	0-1	.000	40-71	.563	47	64	111	2.6	89	1	8	39	17	13	158	3.8	



SEASON HIGH	CATEGORY	CAREER HIGH
24, at UIC, 12/10/2016	Minutes	25, vs. Denver, 1/30/2016
9, two times	Points	9, four times
5, three times	Rebounds	6, at Northern Kentucky, 12/5/2015
2, vs Miami (Ohio), 12/19/2016	Assists	2, vs Miami (Ohio), 12/19/2016
2, two times	Steals	2, two times
1, six times	Blocks	1, nine times
4, at UIC, 12/10/2016	FG Made	4, two times
10, at Butler, 11/16/2016	FG Attempts	10, at Butler, 11/16/2016
	3-PT Made	
2, vs Miami (Ohio), 12/19/2016	3-PT Attempts	2, vs Miami (Ohio), 12/19/2016
3, two times	FT Made	7, at Northern Kentucky, 12/5/2015
4, three times	FT Attempts	8, at Northern Kentucky, 12/5/2015

## CAREER VS. ORAL ROBERTS

Season	gp-gs	min/avg	Total fg-fga	pct	3-Point fg-fga	pct	F-Throws ft-fta	pct	Rebounds off	def	tot	avg	pf	fo	ast	to	blk	stl	pts	avg
2015-16	2-0	19/9.5	1-4	.250	0-0	.000	0-0	.000	0	5	5	2.5	2	0	0	0	0	0	2	1.0
2016-17	1-0	5/5.0	0-3	.000	0-0	.000	0-0	.000	0	0	0	0.0	5	1	0	1	0	0	0	0.0
TOTAL	3-0	24/8.0	1-7	.143	0-0	.000	0-0	.000	0	5	5	1.7	7	1	0	1	0	0	2	0.7

SINGLE-GAME HIGHS [all-time ranking]:

Points: 2, at Oral Roberts -- 01/16/16

Rebounds: 4, Oral Roberts -- 02/17/16

FG made: 1, at Oral Roberts -- 01/16/16

FG attempts: 3, at Oral Roberts -- 12/31/16

## SEASON STATS

Opponent	Date	gs	min	Total fg-fga	pct	3-Pointers 3fg-fga	pct	Free throws ft-fta	pct	Rebounds off	def	tot	avg	pf	a	t/o	blk	stl	pts	avg
BELMONT	11/11/16	*	21	2-8	.250	0-0	.000	1-2	.500	0	1	1	1.0	3	0	1	0	0	5	5.0
DEFIANCE	11/12/16		20	3-8	.375	0-0	.000	0-0	.000	1	4	5	3.0	5	0	3	0	1	6	5.5
TRINE	11/14/16		18	2-5	.400	0-0	.000	1-4	.250	1	2	3	3.0	2	0	0	0	0	5	5.3
at Butler	11/16/16		25	3-10	.300	0-0	.000	3-4	.750	1	4	5	3.5	5	0	0	0	2	9	6.3
OAKLAND	11/19/16		13	1-3	.333	0-0	.000	2-2	1.000	1	0	1	3.0	4	0	1	0	0	4	5.8
COASTAL CAROLINA	11/26/16		22	2-9	.222	0-0	.000	0-0	.000	3	2	5	3.3	3	0	2	0	0	4	5.5
at Kent State	11/30/16		14	1-5	.200	0-0	.000	1-2	.500	1	0	1	3.0	5	0	1	1	0	3	5.1
at Illinois	12/02/16		21	1-3	.333	0-0	.000	0-0	.000	1	0	1	2.8	3	0	3	1	0	2	4.8
at Western Michigan	12/06/16		21	3-6	.500	0-0	.000	1-2	.500	0	2	2	2.7	3	0	0	0	1	7	5.0
at UIC	12/10/16		24	4-7	.571	0-0	.000	1-2	.500	1	1	2	2.6	4	1	2	1	2	9	5.4
vs Miami (Ohio)	12/19/16		21	1-5	.200	0-2	.000	0-0	.000	1	1	2	2.5	2	2	4	0	0	2	5.1
at Wright State	12/20/16		7	0-2	.000	0-0	.000	0-0	.000	0	2	2	2.5	1	0	1	0	0	0	4.7
vs Eastern Kentucky	12/21/16	dnp		-	-	-	-	-	-	-	-	-	-	-	-	-	-	-	-	-
WESTERN ILLINOIS	12/28/16		6	0-2	.000	0-0	.000	0-0	.000	0	1	1	2.4	1	0	0	0	0	0	4.3
at Oral Roberts	12/31/16		5	0-3	.000	0-0	.000	0-0	.000	0	0	0	2.2	5	0	1	0	0	0	4.0
at South Dakota State	01/05/17		16	0-2	.000	0-0	.000	0-0	.000	1	0	1	2.1	2	0	1	1	0	0	3.7
at North Dakota State	01/07/17		21	1-5	.200	0-0	.000	0-2	.000	1	2	3	2.2	5	0	0	0	0	2	3.6
DENVER	01/12/17		21	1-3	.333	0-1	.000	3-4	.750	1	1	2	2.2	1	1	1	1	0	5	3.7
at South Dakota	01/18/17		15	1-1	1.000	0-0	.000	1-1	1.000	0	1	1	2.1	4	0	0	1	0	3	3.7
Totals		1	311	26-87	.299	0-3	.000	14-25	.560	14	24	38	2.1	58	4	21	6	6	66	3.7

Games played: 18

Minutes/game: 17.3

Points/game: 3.7

FG Pct: 29.9

3FG Pct: 0.0

FT Pct: 56.0

Rebounds/game: 2.1

Assists/game: 0.2

Turnovers/game: 1.2

Assist/turnover ratio: 0.2

Steals/game: 0.3

Blocks/game: 0.3

## CAREER STATS

Season	gp-gs	min/avg	Total fg-fga	pct	3-Point fg-fga	pct	F-Throws ft-fta	pct	Rebounds off	def	tot	avg	pf	fo	ast	to	blk	stl	pts	avg
2015-16	25-1	216/8.6	16-46	.348	0-0	.000	10-13	.769	10	25	35	1.4	39	0	0	10	3	5	42	1.7
2016-17	18-1	311/17.3	26-87	.299	0-3	.000	14-25	.560	14	24	38	2.1	58	5	4	21	6	6	66	3.7
TOTAL	43-2	527/12.3	42-133	.316	0-3	.000	24-38	.632	24	49	73	1.7	97	5	4	31	9	11	108	2.5





**ZARIA  
ATKINS**

**22**

Freshman | 5-7  
 Dudley, N.C.  
 Southern Wayne

**GUARD**

SEASON HIGH	CATEGORY	CAREER HIGH
40, vs. Denver, 1/12/2017	Minutes	40, vs. Denver, 1/12/2017
18, vs Eastern Kentucky, 12/21/2016	Points	18, vs Eastern Kentucky, 12/21/2016
5, at Western Michigan, 12/6/16	Rebounds	5, at Western Michigan, 12/6/16
5, at South Dakota State, 1/5/2017	Assists	5, at South Dakota State, 1/5/2017
3, two times	Steals	3, two times
	Blocks	
6, at North Dakota State, 1/7/2016	FG Made	6, at North Dakota State, 1/7/2016
13, at North Dakota State, 1/7/2016	FG Attempts	13, at North Dakota State, 1/7/2016
2, five times	3-PT Made	2, five times
6, at North Dakota State, 1/7/2016	3-PT Attempts	6, at North Dakota State, 1/7/2016
9, vs Eastern Kentucky, 12/21/2016	FT Made	9, vs Eastern Kentucky, 12/21/2016
9, vs Eastern Kentucky, 12/21/2016	FT Attempts	9, vs Eastern Kentucky, 12/21/2016

## CAREER VS. ORAL ROBERTS

Season	gp-gs	min/avg	Total fg-fga	pct	3-Point fg-fga	pct	F-Throws ft-fa	pct	Rebounds off	def	tot	avg	pf	fo	ast	to	blk	stl	Scoring pts	avg
2016-17	1-1	33/33.0	5-8	.625	1-1	1.000	2-2	1.000	0	0	0	0.0	0	0	1	2	0	1	13	13.0
TOTAL	1-1	33/33.0	5-8	.625	1-1	1.000	2-2	1.000	0	0	0	0.0	0	0	1	2	0	1	13	13.0

SINGLE-GAME HIGHS [all-time ranking]:

Points: 13, at Oral Roberts -- 12/31/16  
 Assists: 1, at Oral Roberts -- 12/31/16  
 Steals: 1, at Oral Roberts -- 12/31/16  
 FG made: 5, at Oral Roberts -- 12/31/16  
 FG attempts: 8, at Oral Roberts -- 12/31/16  
 3FG made: 1, at Oral Roberts -- 12/31/16  
 3FG attempts: 1, at Oral Roberts -- 12/31/16  
 FT made: 2, at Oral Roberts -- 12/31/16  
 FT attempts: 2, at Oral Roberts -- 12/31/16

## SEASON STATS

Opponent	Date	gs	min	Total fg-fga	pct	3-Pointers 3fg-fga	pct	Free throws ft-fa	pct	Rebounds off	def	tot	avg	pf	a	t/o	blk	stl	pts	avg
BELMONT	11/11/16	21	17	1-6	.167	0-2	.000	2-2	1.000	0	2	2	2.0	1	0	2	0	0	4	4.0
DEFIANCE	11/12/16	17	22	2-7	.286	0-0	.000	3-4	.750	0	0	0	1.0	1	3	1	0	3	7	5.5
TRINE	11/14/16	22	17	3-6	.500	0-2	.000	0-0	.000	1	0	1	1.0	1	0	1	0	0	6	5.7
at Butler	11/16/16	17	24	2-4	.500	1-2	.500	0-0	.000	0	1	1	1.0	0	1	0	0	0	5	5.5
OAKLAND	11/19/16	13	13	1-3	.333	0-0	.000	4-4	1.000	0	0	0	0.8	2	1	1	0	2	6	5.6
COASTAL CAROLINA	11/26/16	25	31	5-7	.714	0-1	.000	4-4	1.000	1	0	1	0.8	4	1	2	0	0	14	7.0
at Kent State	11/30/16	*	30	3-10	.300	2-2	1.000	2-3	.667	1	1	2	1.0	2	2	2	0	0	10	7.4
at Illinois	12/02/16	*	30	0-5	.000	0-2	.000	5-8	.625	1	3	4	1.4	1	1	1	0	1	5	7.1
at Western Michigan	12/06/16	*	23	1-6	.167	0-0	.000	4-4	1.000	2	3	5	1.8	1	1	5	0	1	6	7.0
at UIC	12/10/16	*	16	0-2	.000	0-0	.000	3-4	.750	0	3	3	1.9	0	0	2	0	1	3	6.6
vs Miami (Ohio)	12/19/16	*	24	5-10	.500	2-5	.400	0-0	.000	1	6	7	2.4	3	1	4	0	1	12	7.1
at Wright State	12/20/16	*	38	4-8	.500	2-3	.667	2-2	1.000	1	3	4	2.5	1	2	3	0	1	12	7.5
vs Eastern Kentucky	12/21/16	*	34	4-8	.500	1-3	.333	9-9	1.000	1	4	5	2.7	1	2	5	0	2	18	8.3
WESTERN ILLINOIS	12/28/16	*	30	2-7	.286	0-3	.000	1-1	1.000	0	1	1	2.6	3	4	4	0	1	5	8.1
at Oral Roberts	12/31/16	*	33	5-8	.625	1-1	1.000	2-2	1.000	0	0	0	2.4	0	1	2	0	1	13	8.4
at South Dakota State	01/05/17	*	36	0-8	.000	0-2	.000	7-8	.875	1	1	2	2.4	1	5	1	0	0	7	8.3
at North Dakota State	01/07/17	*	38	5-13	.385	2-6	.333	0-0	.000	1	2	2.4	3	3	1	0	0	3	12	8.5
DENVER	01/12/17	*	40	5-11	.455	2-2	1.000	4-6	.667	2	1	3	2.4	2	4	4	0	0	16	8.9
at South Dakota	01/18/17	*	36	1-3	.333	0-2	.000	2-2	1.000	1	1	2	2.4	1	2	3	0	2	4	8.7
Totals		13	524	49-132	.371	13-38	.342	54-63	.857	14	31	45	2.4	28	34	44	0	19	165	8.7

Games played: 19  
 Minutes/game: 27.6  
 Points/game: 8.7  
 FG Pct: 37.1  
 3FG Pct: 34.2  
 FT Pct: 85.7

Rebounds/game: 2.4  
 Assists/game: 1.8  
 Turnovers/game: 2.3  
 Assist/turnover ratio: 0.8  
 Steals/game: 1.0

## CAREER STATS

Season	gp-gs	min/avg	Total fg-fga	pct	3-Point fg-fga	pct	F-Throws ft-fa	pct	Rebounds off	def	tot	avg	pf	fo	ast	to	blk	stl	Scoring pts	avg
2016-17	19-13	524/27.6	49-132	.371	13-38	.342	54-63	.857	14	31	45	2.4	28	0	34	44	0	19	165	8.7
TOTAL	19-13	524/27.6	49-132	.371	13-38	.342	54-63	.857	14	31	45	2.4	28	0	34	44	0	19	165	8.7



**PEYTON FALLIS**

Sophomore | 5-10  
Indianapolis, Ind.  
Heritage Christian

**GUARD**

**23**

SEASON HIGH	CATEGORY	CAREER HIGH
32, at Western Michigan, 12/6/2016	Minutes	32, at Western Michigan, 12/6/2016
22, at Butler, 11/16/2016	Points	22, at Butler, 11/16/2016
5, at Western Michigan, 12/6/2016	Rebounds	5, three times
2, three times	Assists	3, two times
2, two times	Steals	3, two times
1, vs Western Illinois, 12/28/2016	Blocks	1, three times
7, at Butler, 11/16/2016	FG Made	7, at Butler, 11/16/2016
11, two times	FG Attempts	14, vs. Western Michigan, 11/29/2015
4, at Butler, 11/16/2016	3-PT Made	4, at Butler, 11/16/2016
6, at Butler, 11/16/2016	3-PT Attempts	6, two times
4, at Butler, 11/16/2016	FT Made	4, at Butler, 11/16/2016
4, at Butler, 11/16/2016	FT Attempts	6, two times

• Named to the 2015-16 Summit League Winter/Spring Academic Honor Roll

## CAREER VS. ORAL ROBERTS

Season	gp-gs	min/avg	Total fg-fga	pct	3-Point fg-fga	pct	F-Throws ft-fga	pct	Rebounds off	def	tot	avg	pf	fo	ast	to	blk	stl	pts	avg
2015-16	2-0	30/15.0	2-6	.333	1-2	.500	2-2	1.000	1	3	4	2.0	5	0	2	0	0	1	7	3.5
2016-17	1-0	8/8.0	1-3	.333	0-0	.000	0-0	.000	1	2	3	3.0	0	0	0	1	0	0	2	2.0
TOTAL	3-0	38/12.7	3-9	.333	1-2	.500	2-2	1.000	2	5	7	2.3	5	0	2	1	0	1	9	3.0

SINGLE-GAME HIGHS [all-time ranking]:

Points: 5, Oral Roberts -- 02/17/16

Rebounds: 4, at Oral Roberts -- 01/16/16

Assists: 2, at Oral Roberts -- 01/16/16

Steals: 1, at Oral Roberts -- 01/16/16

FG made: 1, at Oral Roberts -- 01/16/16; Oral Roberts -- 02/17/16; at Oral Roberts -- 12/31/16

FG attempts: 4, at Oral Roberts -- 01/16/16

3FG made: 1, Oral Roberts -- 02/17/16

3FG attempts: 1, at Oral Roberts -- 01/16/16; Oral Roberts -- 02/17/16

FT made: 2, Oral Roberts -- 02/17/16

FT attempts: 2, Oral Roberts -- 02/17/16

## SEASON STATS

			Total			3-Pointers		Free throws		Rebounds													
Opponent	Date	gs	min	fg-fga	pct	3fg-fga	pct	ft-fta	pct	off	def	tot	avg	pf	a	t/o	blk	stl	pts	avg			
BELMONT	11/11/16	dnp	-	-	-	-	-	-	-	-	-	-	-	-	-	-	-	-	-	-			
DEFIANCE	11/12/16	dnp	-	-	-	-	-	-	-	-	-	-	-	-	-	-	-	-	-	-			
TRINE	11/14/16	26	4-10	.400	1-4	.250	3-3	1.000	1	0	1	1.0	0	1	1	0	2	12	12.0				
at Butler	11/16/16	29	7-11	.636	4-6	.667	4-4	1.000	0	1	1	1.0	1	2	4	0	1	22	17.0				
OAKLAND	11/19/16	*	29	2-9	.222	0-4	.000	0-0	.000	0	2	2	1.3	1	2	6	0	1	4	12.7			
COASTAL CAROLINA	11/26/16	27	3-9	.333	0-2	.000	0-2	.000	1	2	3	1.8	4	1	1	0	0	6	11.0				
at Kent State	11/30/16	18	0-6	.000	0-2	.000	2-2	1.000	2	1	3	2.0	4	2	1	0	0	2	9.2				
at Illinois	12/02/16	4	0-2	.000	0-0	.000	0-0	.000	0	1	1	1.8	1	0	2	0	0	0	7.7				
at Western Michigan	12/06/16	32	2-11	.182	0-3	.000	1-2	.500	1	4	5	2.3	3	1	3	0	2	5	7.3				
at UIC	12/10/16	21	0-3	.000	0-2	.000	0-0	.000	0	1	1	2.1	5	0	4	0	0	0	6.4				
vs Miami (Ohio)	12/19/16	dnp	-	-	-	-	-	-	-	-	-	-	-	-	-	-	-	-	-	-			
at Wright State	12/20/16	dnp	-	-	-	-	-	-	-	-	-	-	-	-	-	-	-	-	-	-			
vs Eastern Kentucky	12/21/16	dnp	-	-	-	-	-	-	-	-	-	-	-	-	-	-	-	-	-	-			
WESTERN ILLINOIS	12/28/16	20	1-3	.333	0-1	.000	0-0	.000	0	0	0	1.9	1	0	3	1	0	2	5.9				
at Oral Roberts	12/31/16	8	1-3	.333	0-0	.000	0-0	.000	1	2	3	2.0	0	0	1	0	0	2	5.5				
at South Dakota State	01/05/17	dnp	-	-	-	-	-	-	-	-	-	-	-	-	-	-	-	-	-	-			
at North Dakota State	01/07/17	dnp	-	-	-	-	-	-	-	-	-	-	-	-	-	-	-	-	-	-			
DENVER	01/12/17	dnp	-	-	-	-	-	-	-	-	-	-	-	-	-	-	-	-	-	-			
at South Dakota	01/18/17	dnp	-	-	-	-	-	-	-	-	-	-	-	-	-	-	-	-	-	-			
Totals		1	214	20-67	.299	5-24	.208	10-13	.769	6	14	20	2.0	20	9	26	1	6	55	5.5			

Games played: 10  
Minutes/game: 21.4  
Points/game: 5.5  
FG Pct: 29.9  
3FG Pct: 20.8  
FT Pct: 76.9

Rebounds/game: 2.0  
Assists/game: 0.9  
Turnovers/game: 2.6  
Assist/turnover ratio: 0.3  
Steals/game: 0.6  
Blocks/game: 0.1

## CAREER STATS

Season	gp-gs	min/avg	Total fg-fga	pct	3-Point fg-fga	pct	F-Throws ft-fga	pct	Rebounds off	def	tot	avg	pf	fo	ast	to	blk	stl	pts	avg
2015-16	28-1	408/14.6	32-132	.242	11-54	.204	23-37	.622	17	38	55	2.0	57	0	23	41	2	23	98	3.5
2016-17	10-1	214/21.4	20-67	.299	5-24	.208	10-13	.769	6	14	20	2.0	20	1	9	26	1	6	55	5.5
TOTAL	38-2	622/16.4	52-199	.261	16-78	.205	33-50	.660	23	52	75	2.0	77	1	32	67	3	29	153	4.0



SEASON HIGH	CATEGORY	CAREER HIGH
37, at South Dakota State, 1/5/2017	Minutes	39, vs. Western Illinois, 1/2/2015
16, at UIC, 12/10/2016	Points	31, vs. Western Illinois, 1/2/2015
10, at Illinois, 12/2/2016	Rebounds	10, at Illinois, 12/2/2016
6, vs Trine, 11/14/2016	Assists	8, two times
5, vs Western Illinois, 12/28/2016	Steals	6, at Milwaukee, 12/28/2015
1, at North Dakota State, 1/7/2017	Blocks	2, at Oral Roberts, 2/28/2014
6, two times	FG Made	12, vs. Western Illinois, 1/2/2015
16, at South Dakota State, 1/5/2017	FG Attempts	20, vs. Western Illinois, 1/2/2015
2, vs Eastern Kentucky, 12/21/2016	3-PT Made	3, two times
6, at South Dakota State, 1/5/2017	3-PT Attempts	8, vs. Indiana, 11/12/2013
8, at UIC, 12/10/2016	FT Made	8, three times
11, at UIC, 12/10/2016	FT Attempts	11, at UIC, 12/10/2016

## CAREER VS. ORAL ROBERTS

Season	gp-gs	min/avg	Total fg-fga	pct	3-Point fg-fga	pct	F-Throws ft-fga	pct	Rebounds off	def	tot	avg	pf	fo	ast	to	blk	stl	pts	avg
2014-15	2-2	59/29.5	6-20	.300	1-4	.250	5-7	.714	3	4	7	3.5	5	0	10	6	3	3	18	9.0
2015-16	2-2	51/25.5	4-14	.286	0-1	.000	0-2	.000	0	7	7	3.5	6	0	4	3	0	3	8	4.0
2016-17	1-1	22/22.0	1-4	.250	0-1	.000	0-0	.000	1	4	5	5.0	2	0	0	2	0	2	2	2.0
TOTAL	5-5	132/26.4	11-38	.289	1-6	.167	5-9	.556	4	15	19	3.8	13	0	14	11	3	8	28	5.6

SINGLE-GAME HIGHS [all-time ranking]:

Points: 12, Oral Roberts -- 01/11/15

Rebounds: 7, at Oral Roberts -- 01/16/16

Assists: 7, Oral Roberts -- 01/11/15

Steals: 2, at Oral Roberts -- 01/16/16; at Oral Roberts -- 02/28/15; at Oral Roberts -- 12/31/16

Blocks: 2, at Oral Roberts -- 02/28/15

FG made: 4, Oral Roberts -- 01/11/15; at Oral Roberts -- 01/16/16

FG attempts: 12, at Oral Roberts -- 02/28/15

3FG made: 1, Oral Roberts -- 01/11/15

3FG attempts: 3, at Oral Roberts -- 02/28/15

FT made: 3, Oral Roberts -- 01/11/15

FT attempts: 5, Oral Roberts -- 01/11/15

## SEASON STATS

Opponent	Date	gs	min	Total		3-Pointers		Free throws		Rebounds											pts	avg
				fg-fga	pct	3fg-fga	pct	ft-fa	pct	off	def	tot	avg	pf	a	t/o	blk	stl				
BELMONT	11/11/16	*	23	3-5	.600	1-1	1.000	0-1	.000	0	0	0	0.0	3	1	4	0	0	7	7.0		
DEFIANCE	11/12/16	*	17	3-6	.500	0-0	.000	0-0	.000	0	3	3	1.5	2	5	0	0	1	6	6.5		
TRINE	11/14/16	*	21	3-6	.500	0-1	.000	2-3	.667	2	3	5	2.7	5	6	2	0	1	8	7.0		
at Butler	11/16/16	*	29	3-5	.600	0-0	.000	4-4	1.000	1	3	4	3.0	3	5	3	0	1	10	7.8		
OAKLAND	11/19/16	*	28	3-6	.500	1-1	1.000	1-1	1.000	0	5	5	3.4	1	3	3	0	3	8	7.8		
COASTAL CAROLINA	11/26/16	*	16	0-0	.000	0-0	.000	0-0	.000	0	1	1	3.0	2	1	1	0	0	0	6.5		
at Kent State	11/30/16		26	5-6	.833	1-1	1.000	1-1	1.000	1	2	3	3.0	5	2	3	0	2	12	7.3		
at Illinois	12/02/16	*	24	1-3	.333	0-0	.000	0-0	.000	1	9	10	3.9	2	0	1	0	0	2	6.6		
at Western Michigan	12/06/16	*	19	1-9	.111	0-3	.000	0-0	.000	1	0	1	3.6	3	1	1	0	1	2	6.1		
at UIC	12/10/16	*	32	4-8	.500	0-2	.000	8-11	.727	4	1	5	3.7	4	3	3	0	2	16	7.1		
vs Miami (Ohio)	12/19/16	*	20	2-4	.500	0-2	.000	0-0	.000	3	2	5	3.8	3	2	3	0	2	4	6.8		
at Wright State	12/20/16	*	29	3-6	.500	0-2	.000	1-2	.500	1	3	4	3.8	1	2	3	0	0	7	6.8		
vs Eastern Kentucky	12/21/16	*	34	3-6	.500	2-3	.667	5-5	1.000	1	3	4	3.8	3	4	4	0	2	13	7.3		
WESTERN ILLINOIS	12/28/16	*	31	4-7	.571	0-1	.000	2-2	1.000	0	2	2	3.7	3	5	3	0	5	10	7.5		
at Oral Roberts	12/31/16	*	22	1-4	.250	0-1	.000	0-0	.000	1	4	5	3.8	2	0	2	0	2	2	7.1		
at South Dakota State	01/05/17	*	37	6-16	.375	1-6	.167	0-0	.000	1	2	3	3.8	2	1	1	0	4	13	7.5		
at North Dakota State	01/07/17	*	35	2-10	.200	0-2	.000	0-0	.000	0	2	2	3.6	2	2	2	1	3	4	7.3		
DENVER	01/12/17	*	35	6-9	.667	1-2	.500	0-0	.000	5	4	9	3.9	4	2	2	0	0	13	7.6		
at South Dakota	01/18/17	*	34	4-10	.400	0-2	.000	6-7	.857	0	4	4	3.9	4	4	3	0	0	14	7.9		
Totals			18	512	57-126	.452	7-30	.233	30-37	.811	22	53	75	3.9	54	49	44	1	29	151	7.9	

Games played: 19  
Minutes/game: 26.9  
Points/game: 7.9  
FG Pct: 45.2  
3FG Pct: 23.3  
FT Pct: 81.1

Rebounds/game: 3.9  
Assists/game: 2.6  
Turnovers/game: 2.3  
Assist/turnover ratio: 1.1  
Steals/game: 1.5  
Blocks/game: 0.1

## CAREER STATS

Season	gp-gs	min/avg	Total fg-fga	pct	3-Point fg-fga	pct	F-Throws ft-fga	pct	Rebounds off	def	tot	avg	pf	fo	ast	to	blk	stl	pts	avg
2013-14	30-0	374/12.5	43-107	.402	17-51	.333	44-66	.667	15	42	57	1.9	45	0	40	30	0	17	147	4.9
2014-15	30-29	787/26.2	94-235	.400	20-66	.303	67-91	.736	33	78	111	3.7	82	3	77	77	7	44	275	9.2
2015-16	30-23	780/26.0	70-178	.393	11-43	.256	43-66	.652	41	76	117	3.9	96	7	86	71	1	50	194	6.5
2016-17	19-18	512/26.9	57-126	.452	7-30	.233	30-37	.811	22	53	75	3.9	54	2	49	44	1	29	151	7.9
TOTAL	109-70	2453/22.5	264-646	.409	55-190	.289	184-260	.708	111	249	360	3.3	277	12	252	222	9	140	767	7.0



**NIA THOMAS** 2

Sophomore | 5-8  
Liberty Township, Ohio  
Lakota East  
Lincoln Trail College

**GUARD**

SEASON HIGH	CATEGORY	CAREER HIGH
13, vs Miami (Ohio), 12/19/2016	Minutes	13, vs Miami (Ohio), 12/19/2016
6, at Kent State, 11/30/2016	Points	6, at Kent State, 11/30/2016
3, two times	Rebounds	3, two times
1, vs Miami (Ohio), 12/19/2016	Assists	1, vs Miami (Ohio), 12/19/2016
1, at Illinois, 12/2/2016	Steals	1, at Illinois, 12/2/2016
	Blocks	
2, at Kent State, 11/30/2016	FG Made	2, at Kent State, 11/30/2016
4, at Kent State, 11/30/2016	FG Attempts	4, at Kent State, 11/30/2016
1, at Kent State, 11/30/2016	3-PT Made	1, at Kent State, 11/30/2016
1, two times	3-PT Attempts	1, two times
2, vs Miami (Ohio), 12/19/2016	FT Made	2, vs Miami (Ohio), 12/19/2016
2, two times	FT Attempts	2, two times

## SEASON STATS

Opponent	Date	gs	min	Total		3-Pointers		Free throws		Rebounds				pf	a	t/o	blk	stl	pts	avg
				fg-fga	pct	3fg-fga	pct	ft-fga	pct	off	def	tot	avg							
BELMONT	11/11/16	dnp		-	-	-	-	-	-	-	-	-	-	-	-	-	-	-	-	-
DEFIANCE	11/12/16	10		1-3	.333	0-0	.000	0-0	.000	2	1	3	3.0	1	0	2	0	0	2	2.0
TRINE	11/14/16	dnp		-	-	-	-	-	-	-	-	-	-	-	-	-	-	-	-	-
at Butler	11/16/16	dnp		-	-	-	-	-	-	-	-	-	-	-	-	-	-	-	-	-
OAKLAND	11/19/16	1		0-0	.000	0-0	.000	0-0	.000	0	0	0	1.5	0	0	0	0	0	0	1.0
COASTAL CAROLINA	11/26/16	3		0-0	.000	0-0	.000	0-0	.000	0	0	0	1.0	0	0	0	0	0	0	0.7
at Kent State	11/30/16	11		2-4	.500	1-1	1.000	1-2	.500	0	2	2	1.3	2	0	0	0	0	6	2.0
at Illinois	12/02/16	3		0-0	.000	0-0	.000	0-0	.000	0	0	0	1.0	0	0	0	0	1	0	1.6
at Western Michigan	12/06/16	1		0-0	.000	0-0	.000	0-0	.000	0	0	0	0.8	0	0	0	0	0	0	1.3
at UIC	12/10/16	dnp		-	-	-	-	-	-	-	-	-	-	-	-	-	-	-	-	-
vs Miami (Ohio)	12/19/16	13		1-2	.500	0-0	.000	2-2	1.000	1	2	3	1.1	3	1	1	0	0	4	1.7
at Wright State	12/20/16	3		0-0	.000	0-0	.000	0-0	.000	0	0	0	1.0	0	0	0	0	0	0	1.5
vs Eastern Kentucky	12/21/16	2		0-2	.000	0-1	.000	0-0	.000	1	0	1	1.0	0	0	0	0	0	0	1.3
WESTERN ILLINOIS	12/28/16	dnp		-	-	-	-	-	-	-	-	-	-	-	-	-	-	-	-	-
at Oral Roberts	12/31/16	3		0-0	.000	0-0	.000	0-0	.000	0	0	0	0.9	0	0	1	0	0	0	1.2
at South Dakota State	01/05/17	dnp		-	-	-	-	-	-	-	-	-	-	-	-	-	-	-	-	-
at North Dakota State	01/07/17	2		0-1	.000	0-0	.000	0-0	.000	0	0	0	0.8	1	0	0	0	0	0	1.1
DENVER	01/12/17	dnp		-	-	-	-	-	-	-	-	-	-	-	-	-	-	-	-	-
at South Dakota	01/18/17	dnp		-	-	-	-	-	-	-	-	-	-	-	-	-	-	-	-	-
Totals		0	52	4-12	.333	1-2	.500	3-4	.750	4	5	9	0.8	7	1	4	0	1	12	1.1

Games played: 11  
Minutes/game: 4.7  
Points/game: 1.1  
FG Pct: 33.3  
3FG Pct: 50.0  
FT Pct: 75.0

Rebounds/game: 0.8  
Assists/game: 0.1  
Turnovers/game: 0.4  
Assist/turnover ratio: 0.3  
Steals/game: 0.1



**HANNAH HESS** 5

Freshman | 5-9  
Oregon, Ohio  
Clay

**GUARD**

SEASON HIGH	CATEGORY	CAREER HIGH
	Minutes	
	Points	
	Rebounds	
	Assists	
	Steals	
	Blocks	
	FG Made	
	FG Attempts	
	3-PT Made	
	3-PT Attempts	
	FT Made	
	FT Attempts	



# FORT WAYNE SEASON STATS

RECORD:	OVERALL	HOME	AWAY	NEUTRAL
ALL GAMES	3-16	1-6	1-9	1-1
CONFERENCE	0-6	0-2	0-4	0-0
NON-CONFERENCE	3-10	1-4	1-5	1-1

#	Player	gp-gs	min	avg	Total	3-Point	F-Throw	Rebounds		pf	dq	a	to	blk	stl	pts	avg
					fg-fga	fg%	3fg-fga	3fg%	ft-fa	ft%	off	def	tot	avg			
01	Y. Ramirez-Tejeda	17-0	192	11.3	17-49	.347	0-0	.000	9-9	1.000	13	26	39	2.3	14	0	3
02	Nia Thomas	11-0	52	4.7	4-12	.333	1-2	.500	3-4	.750	4	5	9	0.8	7	0	1
03	KeShyra McCarver	17-16	404	23.8	37-109	.339	9-29	.310	24-31	.774	25	45	70	4.1	50	2	12
12	Anna Lappenküper	19-14	553	29.1	45-123	.366	14-51	.275	18-22	.818	5	42	47	2.5	41	2	26
13	De'Jour Young	19-19	571	30.1	86-199	.432	10-48	.208	54-61	.885	27	66	93	4.9	46	1	37
15	Selena Lozada	17-13	371	21.8	38-105	.362	0-1	.000	22-35	.629	34	37	71	4.2	48	1	6
21	Isis Parker	18-1	311	17.3	26-87	.299	0-3	.000	14-25	.560	14	24	38	2.1	58	5	4
22	Zaria Atkins	19-13	524	27.6	49-132	.371	13-38	.342	54-63	.857	14	31	45	2.4	28	0	34
23	Peyton Fallis	10-1	214	21.4	20-67	.299	5-24	.208	10-13	.769	6	14	20	2.0	20	1	9
31	Rachel Rinehart	19-18	512	26.9	57-126	.452	7-30	.233	30-37	.811	22	53	75	3.9	54	2	49
32	Lindley Kistler	6-0	64	10.7	9-19	.474	5-12	.417	7-10	.700	4	14	18	3.0	5	0	1
Team											37	30	67			16	
Total.....		0	3768		388-1028	.377	64-238	.269	245-310	.790	205	387	592	0.0	371	14	182
Opponents.....		0	3774		501-1065	.470	101-252	.401	235-344	.683	216	443	659	0.0	344	7	261

TEAM STATISTICS	FW	OPP
SCORING	1085	1338
Points per game	57.1	70.4
Scoring margin	-13.3	-
FIELD GOALS-ATT	388-1028	501-1065
Field goal pct	.377	.470
3 POINT FG-ATT	64-238	101-252
3-point FG pct	.269	.401
3-pt FG made per game	3.4	5.3
FREE THROWS-ATT	245-310	235-344
Free throw pct	.790	.683
F-Throws made per game	12.9	12.4
REBOUNDS	592	659
Rebounds per game	31.2	34.7
Rebounding margin	-3.5	-
ASSISTS	182	261
Assists per game	9.6	13.7
TURNOVERS	327	282
Turnovers per game	17.2	14.8
Turnover margin	-2.4	-
Assist/turnover ratio	0.6	0.9
STEALS	119	145
Steals per game	6.3	7.6
BLOCKS	33	78
Blocks per game	1.7	4.1
ATTENDANCE	6702	8059
Home games-Avg/Game	7-957	10-712
Neutral site-Avg/Game	-	2-472

Date	Opponent	Score	Att.
11/11/16	BELMONT	L 59-85	1049
11/12/16	DEFIANCE	W 76-58	525
11/14/16	TRINE	L 71-80	565
11/16/16	at Butler	L 64-70	565
^ 11/19/16	OAKLAND	L 61-82	1667
^ 11/26/16	COASTAL CAROLINA	L 57-72	1789
11/30/16	at Kent State	L 55-66	327
12/02/16	at Illinois	L 33-56	1173
12/06/16	at Western Michigan	L 35-61	558
12/10/16	at UIC	W 61-55	200
# 12/19/16	vs Miami (Ohio)	L 47-69	391
# 12/20/16	at Wright State	L 51-62	438
# 12/21/16	vs Eastern Kentucky	W 68-59	552
* 12/28/16	WESTERN ILLINOIS	L 53-75	568
* 12/31/16	at Oral Roberts	L 56-82	330
* 01/05/17	at South Dakota State	L 51-73	1276
* 01/07/17	at North Dakota State	L 56-68	638
* 01/12/17	DENVER	L 72-78	539
* 01/18/17	at South Dakota	L 59-87	1611

^ = at Memorial Coliseum

# = Wright State Invitational Presented by Holiday Inn

\* = Summit League game

Score by Periods	1st	2nd	3rd	4th	Totals
Fort Wayne	239	277	280	289	1085
Opponents	356	290	338	354	1338

# FORT WAYNE SUMMIT LEAGUE STATS

RECORD:	OVERALL	HOME	AWAY	NEUTRAL
ALL GAMES	0-6	0-2	0-4	0-0
CONFERENCE	0-6	0-2	0-4	0-0
NON-CONFERENCE	0-0	0-0	0-0	0-0

#	Player	gp-gs	min	avg	Total		3-Point		F-Throw		Rebounds				pf	dq	a	to	blk	stl	pts	avg	
					fg-fga	fg%	3fg-fga	3fg%	ft-fa	ft%	off	def	tot	avg									
01	Y. Ramirez-Tejeda	6-0	105	17.5	11-27	.407	0-0	.000	4-4	1.000	8	14	22	3.7	3	0	2	7	1	3	26	4.3	
02	Nia Thomas	2-0	5	2.5	0-1	.000	0-0	.000	0-0	.000	0	0	0	0.0	1	0	0	1	0	0	0	0.0	
03	KeShyra McCarver	4-4	76	19.0	7-23	.304	1-4	.250	8-11	.727	8	10	18	4.5	9	1	3	4	1	2	23	5.8	
12	Anna Lappenküper	6-6	204	34.0	23-58	.397	10-30	.333	9-10	.900	1	14	15	2.5	17	1	5	16	0	6	65	10.8	
13	De'Jour Young	6-6	201	33.5	31-78	.397	2-12	.167	14-16	.875	8	24	32	5.3	19	1	20	13	2	5	78	13.0	
15	Selena Lozada	4-2	90	22.5	11-35	.314	0-0	.000	6-6	1.000	8	13	21	5.3	7	0	0	3	6	2	28	7.0	
21	Isis Parker	6-0	84	14.0	3-16	.188	0-1	.000	4-7	.571	3	5	8	1.3	18	2	1	3	3	0	10	1.7	
22	Zaria Atkins	6-6	213	35.5	18-50	.360	5-16	.313	16-19	.842	5	5	10	1.7	10	0	19	15	0	7	57	9.5	
23	Peyton Fallis	2-0	28	14.0	2-6	.333	0-1	.000	0-0	.000	1	2	3	1.5	1	0	0	4	1	0	4	2.0	
31	Rachel Rinehart	6-6	194	32.3	23-56	.411	2-14	.143	8-9	.889	7	18	25	4.2	17	0	14	13	1	14	56	9.3	
Team											14	7	21	6									
Total.....		6	1200		129-350	.369	20-78	.256	69-82	.841	63	112	175	29.2	102	5	64	85	15	39	347	57.8	
Opponents.....		6	1200		179-342	.523	38-74	.514	67-90	.744	58	157	215	35.8	100	1	89	80	28	38	463	77.2	

TEAM STATISTICS	FW	OPP	Date	Opponent	Score	Att.
SCORING	347	463	* 12/28/16	WESTERN ILLINOIS	L 53-75	568
Points per game	57.8	77.2	* 12/31/16	at Oral Roberts	L 56-82	330
Scoring margin	-19.3	-	* 01/05/17	at South Dakota State	L 51-73	1276
FIELD GOALS-ATT	129-350	179-342	* 01/07/17	at North Dakota State	L 56-68	638
Field goal pct	.369	.523	* 01/12/17	DENVER	L 72-78	539
3 POINT FG-ATT	20-78	38-74	* 01/18/17	at South Dakota	L 59-87	1611
3-point FG pct	.256	.514				
3-pt FG made per game	3.3	6.3				
FREE THROWS-ATT	69-82	67-90				
Free throw pct	.841	.744				
F-Throws made per game	11.5	11.2				
REBOUNDS	175	215				
Rebounds per game	29.2	35.8				
Rebounding margin	-6.7	-				
ASSISTS	64	89				
Assists per game	10.7	14.8				
TURNOVERS	85	80				
Turnovers per game	14.2	13.3				
Turnover margin	-0.8	-				
Assist/turnover ratio	0.8	1.1				
STEALS	39	38				
Steals per game	6.5	6.3				
BLOCKS	15	28				
Blocks per game	2.5	4.7				
ATTENDANCE	1107	3855				
Home games-Avg/Game	2-554	4-964				
Neutral site-Avg/Game	-	0-0				

Score by Periods	1st	2nd	3rd	4th	Totals
Fort Wayne	84	89	86	88	347
Opponents	128	109	122	104	463

## TV/RADIO ROSTER



**#1 YULESKA RAMIREZ-TEJEDA**  
5-7 | Guard | Fr.  
Cambridge, Massachusetts



**#2 NIA THOMAS**  
5-8 | Guard | So.  
Liberty Township, Ohio



**#3 KeSHYRA MCCARVER**  
5-10 | Forward | Jr.  
Toledo, Ohio



**#5 HANNAH HESS**  
5-9 | Guard | Fr.  
Oregon, Ohio



**#12 ANNA LAPPENKÜPER**  
5-8 | Guard | Fr.  
Herne, Germany



**#13 De'JOUR YOUNG**  
5-7 | Guard | So.  
Fort Wayne, Indiana



**#15 SELENA LOZADA**  
6-2 | Forward | Sr.  
Perth Amboy, New Jersey



**#21 ISIS PARKER**  
6-0 | Forward | So.  
Cleveland, Ohio



**#22 ZARIA ATKINS**  
5-7 | Guard | Fr.  
Dudley, North Carolina



**#23 PEYTON FALLIS**  
5-10 | Guard | So.  
Indianapolis, Indiana



**#31 RACHEL RINEHART**  
5-8 | Guard | Sr.  
Angola, Indiana



**NIECEE NELSON**  
Head Coach  
Concordia Portland '02



**TY SHAW**  
Assistant Coach  
Albertson '02



**MARCIE ALBERTS**  
Assistant Coach  
Ohio State '97



**CAROL DUNCAN**  
Assistant Coach  
Purdue '06



**HALEY SEIBERT**  
Graduate Assistant Coach  
IPFW '15





# 1 • YULESKA RAMIREZ-TEJEDA • (YOU-less-Kuh) • G • Jr. • 5-7 • Cambridge, Mass. • Cambridge Rindge and Latin

Season	GP	GS	MPG	Pts	PPG	RPG	Ast	Blk	Stl	FG%	3FG%	FT%
	17	0	11.3	43	2.5	2.29	3	1	5	.347	.000	1.000
Career	GP	GS	MPG	Pts	PPG	RPG	Ast	Blk	Stl	FG%	3FG%	FT%
	17	0	11.3	43	2.5	2.29	3	1	5	.347	.000	1.000

Season High	Career High
10, at North Dakota State, 1/7/2017	Pts ... 10, at North Dakota State, 1/7/2017
7, vs Denver, 1/12/2017	Reb ... 7, vs Denver, 1/12/2017
1, three times	Ast ... 1, three times
3, at North Dakota State, 1/7/2017	Stl ... 3, at North Dakota State, 1/7/2017
1, at North Dakota State, 1/7/2017	Bik ... 1, at North Dakota State, 1/7/2017
5, at North Dakota State, 1/7/2017	FG ... 5, at North Dakota State, 1/7/2017
4, at South Dakota, 1/18/2017	3PT ... 4, at South Dakota, 1/18/2017
	FT ... 4, at South Dakota, 1/18/2017

Career Notes
10-point games ..... 1
5-point games ..... 4
5-rebound games ..... 1
3-steal games ..... 1



# 2 • NIA THOMAS • (KNEE-uh) • G • Fr. • 5-8 • Liberty Township, Ohio • Lakota East

Season	GP	GS	MPG	Pts	PPG	RPG	Ast	Blk	Stl	FG%	3FG%	FT%
	11	0	4.7	12	1.1	0.82	1	0	1	.333	.500	.750
Career	GP	GS	MPG	Pts	PPG	RPG	Ast	Blk	Stl	FG%	3FG%	FT%
	11	0	4.7	12	1.1	0.82	1	0	1	.333	.500	.750

Season High	Career High
6, at Kent State, 11/30/2016	Pts ..... 6, at Kent State, 11/30/2016
3, two times	Reb ..... 3, two times
1, vs Miami (Ohio), 12/19/2016	Ast ..... 1, vs Miami (Ohio), 12/19/2016
1, at Illinois, 12/2/2016	Stl ..... 1, at Illinois, 12/2/2016
	Bik ..... 1, at Illinois, 12/2/2016
2, at Kent State, 11/30/2016	FG ..... 2, at Kent State, 11/30/2016
1, at Kent State, 11/30/2016	3PT ..... 1, at Kent State, 11/30/2016
2, vs Miami (Ohio), 12/19/2016	FT ..... 2, vs Miami (Ohio), 12/19/2016

Career Notes
5-point games ..... 1



# 3 • KeSHYRA McCARVER • (Key-Shy-Ruh) • F • Jr. • 5-10 • Toledo, Ohio • Whitmer

Season	GP	GS	MPG	Pts	PPG	RPG	Ast	Bk	Stl	FG%	3FG%	FT%
	17	16	23.8	107	6.3	4.12	12	3	14	.339	.310	.774
Career	GP	GS	MPG	Pts	PPG	RPG	Ast	Bk	Stl	FG%	3FG%	FT%
	76	39	19.4	402	5.3	3.37	63	10	47	.329	.312	.725

Season High	Career High
12, two times	Pts ..... 22, at Illinois, 11/14/2014
8, vs DePaul, 11/12/2016	Reb ..... 14, at Illinois, 11/14/2014
2, at UIC, 12/10/2016	Ast ..... 4, at Western Illinois, 1/31/2015
3, vs DePaul, 11/12/2016	Stl ..... 3, four times
1, three times	Bik ..... 2, at Omaha, 2/17/2016
5, two times	FG ..... 7, vs USC Upstate, 11/21/2015
2, two times	3PT ..... 4, vs Grace, 11/18/2014
6, vs Eastern Kentucky, 12/21/2016	FT ..... 11, at Illinois, 11/14/2014

Career Notes
Double-Double ..... 1
20-point games ..... 3
10-point games ..... 9
10-rebound games ..... 1
5-rebound games ..... 21
3-steal games ..... 4
3-three's games ..... 2



# 5 • HANNAH HESS • G • Fr. • 5-9 • Oregon, Ohio • Clay

Season	GP	GS	MPG	Pts	PPG	RPG	Ast	Bik	Stl	FG%	3FG%	FT%
Has Yet to Appear												
Career	GP	GS	MPG	Pts	PPG	RPG	Ast	Bik	Stl	FG%	3FG%	FT%
Has Yet to Appear												

Season High	Career High
	Pts .....
	Reb .....
	Ast .....
	Stl .....
	Bik .....
	FG .....
	3PT .....
	FT .....

Career Notes
--------------



# 12 • ANNA LAPPENKÜPER • (AHH-nuh LAH-pen-cooper) • G • Fr. • 5-8 • Herne, Germany • Otto Hahn Gymnasium

Season	GP	GS	MPG	Pts	PPG	RPG	Ast	Bk	Stl	FG%	3FG%	FT%
	19	14	29.1	122	6.4	2.47	26	2	14	.366	.275	.818
Career	GP	GS	MPG	Pts	PPG	RPG	Ast	Bk	Stl	FG%	3FG%	FT%
	19	14	29.1	122	6.4	2.47	26	2	14	.366	.275	.818

Season High	Career High
13, vs Western Illinois, 12/28/2016	Pts ..... 13, vs Western Illinois, 12/28/2016
5, two times	Reb ..... 5, two times
5, two times	Ast ..... 5, two times
3, at North Dakota State, 1/7/2017	Stl ..... 3, at North Dakota State, 1/7/2017
1, two times	Bik ..... 1, two times
5, two times	FG ..... 5, two times
3, vs Western Illinois, 12/28/2016	3PT ..... 3, vs Western Illinois, 12/28/2016
7, at Oral Roberts, 12/31/2016	FT ..... 7, at Oral Roberts, 12/31/2016

Career Notes
10-point games ..... 5
5-point games ..... 14
5-rebound games ..... 2
5-assist games ..... 2
3-three's games ..... 1
3-steal games ..... 1



# 13 • De'JOUR YOUNG • (D-zhur) • G • So. • 5-7 • Fort Wayne, Ind. • Concordia Lutheran

Season	GP	GS	MPG	Pts	PPG	RPG	Ast	Bk	Stl	FG%	3FG%	FT%
	19	19	30.1	236	12.4	4.89	37	2	14	.432	.208	.885
Career	GP	GS	MPG	Pts	PPG	RPG	Ast	Bk	Stl	FG%	3FG%	FT%
	49	40	25.7	439	9.0	4.08	71	10	47	.421	.269	.789

Season High	Career High
21, vs Oakland, 11/19/2016	Pts ..... 21, vs Oakland, 11/19/2016
11, vs Denver, 1/12/2017	Reb ..... 11, vs Denver, 1/12/2017
5, three times	Ast ..... 5, three times
3, vs Trine, 11/14/2016	Stl ..... 5, vs Grace, 11/16/2015
1, two times	Bik ..... 2, two times
7, four times	FG ..... 7, four times
3, vs Oakland, 11/19/2016	3PT ..... 3, vs Oakland, 11/19/2016
8, vs Oakland, 11/19/2016	FT ..... 8, vs Oakland, 11/19/2016

Career Notes
Double-Double ..... 1
20-point games ..... 2
10-point games ..... 18
10-rebound games ..... 2
5-assist games ..... 3
5-steal games ..... 5
5-5 games ..... 3



# 15 • SELENA LOZADA • (Lo-zaah-Duh) • F • Sr. • 6-2 • Perth Amboy, N.J. • Western Guilford

Season	GP	GS	MPG	Pts	PPG	RPG	Ast	Bk	Stl	FG%	3FG%	FT%
	17	13	21.8	98	5.8	4.18	6	13	8	.362	.000	.629
Career	GP	GS	MPG	Pts	PPG	RPG	Ast	Bk	Stl	FG%	3FG%	FT%
	42	19	14.8	158	3.8	2.64	8	17	13	.335	.000	.563

Season High	Career High
12, two times	Pts ..... 13, vs Trine, 11/16/2015
7, two times	Reb ..... 7, two times
3, vs Eastern Kentucky, 12/21/2016	Ast ..... 3, vs Eastern Kentucky, 12/21/2016
1, six times	Stl ..... 2, two times
3, vs Western Illinois, 12/28/2016	Bik ..... 3, vs Western Illinois, 12/28/2016
6, two times	FG ..... 6, two times
	3PT .....
4, at Kent State, 11/30/2016	FT ..... 7, vs Trine, 11/16/2015

Career Notes
10-point games ..... 4
5-point games ..... 15
5-rebound games ..... 10



# 21 • ISIS PARKER • F • So. • 6-0 • Cleveland, Ohio • Solon

Season	GP	GS	MPG	Pts	PPG	RPG	Ast	Blk	Stl	FG%	3FG%	FT%
	18	1	17.3	66	3.7	2.11	4	6	6	.299	.000	.560
Career	GP	GS	MPG	Pts	PPG	RPG	Ast	Blk	Stl	FG%	3FG%	FT%
	43	2	12.3	108	2.5	1.70	4	9	11	.316	.000	.632

Season High	Career High
9, two times	Pts ..... 9, four times
5, three times	Reb ..... 6, at Northern Kentucky, 12/5/2015
2, vs Miami (Ohio), 12/19/2016	Ast ..... 2, vs Miami (Ohio), 12/19/2016
2, two times	Stl ..... 2, two times
1, six times	Bik ..... 1, nine times
4, at UIC, 12/10/2016	FG ..... 4, two times
	3PT .....
3, two times	FT ..... 7, at Northern Kentucky, 12/5/2015

Career Notes
5-point games ..... 12
5-rebound games ..... 5

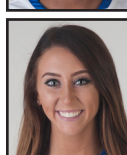


# 22 • ZARIA ATKINS • G • Fr. • 5-7 • Dudley, N.C. • Southern Wayne

22 • ZAINA ATKINS • G • H. • 5-7 • Dudley, N.C. • Southern Wayne												
Season	GP	GS	MPG	Pts	PPG	RPG	Ast	Blk	Stl	FG%	3FG%	FT%
	19	13	27.6	165	8.7	2.37	34	0	19	.371	.342	.857
Career	GP	GS	MPG	Pts	PPG	RPG	Ast	Blk	Stl	FG%	3FG%	FT%
	19	13	27.6	165	8.7	2.37	34	0	19	.371	.342	.857

Season High	Career High
18, vs Eastern Kentucky, 12/21/2016	Pts ..... 18, vs Eastern Kentucky, 12/21/2016
7, vs Miami (Ohio), 12/19/2016	Reb ..... 7, vs Miami (Ohio), 12/19/2016
5, at South Dakota State, 1/5/2017	Ast ..... 5, at South Dakota State, 1/5/2017
3, two times	Stl ..... 3, two times
	Bik ..... 3, two times
5, five times	FG ..... 5, five times
2, five times	3PT ..... 2, five times
9, vs Eastern Kentucky, 12/21/2016	FT ..... 9, vs Eastern Kentucky, 12/21/2016

Career Notes
10-point games ..... 8
5-point games ..... 15
5-rebound games ..... 3
5-assist games ..... 1
3-steal games ..... 2

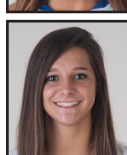


# 23 • PEYTON FALLIS • (Fau-liss) • G • So. • 5-10 • Indianapolis, Ind. • Heritage Christian

23 - FLETON FALLS - (grad 1985) - 0 - 50. 5-10 - Indianapolis, Ind. - Heritage Christian												
Season	GP	GS	MPG	Pts	PPG	RPG	Ast	Blk	Stl	FG%	3FG%	FT%
	10	1	21.4	55	5.5	2.00	9	1	6	.299	.208	.769
Career	GP	GS	MPG	Pts	PPG	RPG	Ast	Blk	Stl	FG%	3FG%	FT%
	38	2	16.4	153	4.0	1.97	32	3	29	.261	.205	.660

Season High	Career High
22, at Butler, 11/16/2016	Pts ..... 22, at Butler, 11/16/2016
5, at Western Michigan, 12/6/2016	Reb ..... 5, three times
2, three times	Ast ..... 3, two times
2, vs Trine, 11/14/2016	Stl ..... 3, two times
1, vs Western Illinois, 12/28/2016	Bik ..... 1, three times
7, at Butler, 11/16/2016	FG ..... 7, at Butler, 11/16/2016
4, at Butler, 11/16/2016	3PT ..... 4, at Butler, 11/16/2016
5, at Illinois, 12/2/2016	FT ..... 5, at Illinois, 12/2/2016

Career Notes
20-point games ..... 1
10-point games ..... 4
5-point games ..... 15
5-rebound games ..... 3
3-steal games ..... 1
3-three's games ..... 3
Games with a 3 ..... 10



# 31 • RACHEL RINEHART • G • Sr. • 5-8 • Angola, Ind. • Angola

31 • RACHIEE HINERANT • d • Sr. • 5-6 • Angola, Ind. • Angola												
Season	GP	GS	MPG	Pts	PPG	RPG	Ast	Blk	Stl	FG%	3FG%	FT%
	19	18	26.9	151	7.9	3.95	49	1	29	.452	.233	.811
Career	GP	GS	MPG	Pts	PPG	RPG	Ast	Blk	Stl	FG%	3FG%	FT%
	100	70	22.5	767	7.0	3.30	252	9	140	.409	.289	.708

Season High	Career High
16, at UIC, 12/10/2016	Pts ..... 31, vs Western Illinois, 12/2/2015
10, at Illinois, 12/2/2016	Reb ..... 10, at Illinois, 12/2/2016
6, vs Trine, 11/14/2016	Ast ..... 8, two times
5, vs Western Illinois, 12/28/2016	Stl ..... 6, at Milwaukee, 12/28/2015
1, at North Dakota State, 1/7/2017	Bik ..... 2, at Oral Roberts, 2/28/2014
2, two times	FG ..... 12, vs Western Illinois, 12/2/2015
2, vs Eastern Kentucky, 12/21/2016	3PT ..... 3, two times
8, at UIC, 12/10/2016	FT ..... 8, three times

Career Notes
30-point games ..... 1
20-point games ..... 4
10-point games ..... 4
5-assist games ..... 16
3-steal games ..... 13
5-5 games ..... 6
3-three's games ..... 2



## NIECEE (KNEE-see) NELSON

Head Coach - 1st Year  
Concordia Portland '02



## TY SHAW

Assistant Coach  
Albertson '02



## MARCIE ALBERTS

Assistant Coach  
Ohio State '97



## CAROL DUNCAN

Assistant Coach  
Purdue '06



## HALEY SEIBERT

GA Coach  
IPFW '15