

FORT WAYNE

WOMEN'S BASKETBALL



FORT WAYNE MASTODONS

3-13, 0-3 SUMMIT LEAGUE

VS.

NORTH DAKOTA STATE BISON

4-12, 2-1 SUMMIT LEAGUE



NOVEMBER (1-6)

11/6	INDIANA TECH (EXHIBITION)	W, 78-46
11/11	BELMONT	L, 85-59
11/12	DEFIANCE	W, 76-58
11/14	TRINE	L, 80-71
11/16	at Butler	L, 70-64
11/19	OAKLAND	L, 82-61
11/26	COASTAL CAROLINA	L, 72-57
11/30	at Kent State	L, 66-55

DECEMBER (2-6)

12/2	at Illinois	L, 56-33
12/6	at Western Michigan	L, 61-35
12/10	at UIC	W, 61-55
WRIGHT STATE INVITATIONAL (DEC. 19-21)		
12/19	vs. Miami (Ohio)	L, 69-47
12/20	at Wright State	L, 62-51
12/21	vs. Eastern Kentucky	W, 69-58
12/28	WESTERN ILLINOIS •	L, 75-53
12/31	at Oral Roberts •	L, 82-56

JANUARY (0-1)

1/5	at South Dakota State •	L, 73-51
1/7	at North Dakota State •	3 P.M.
1/12	DENVER •	6 P.M.
1/18	at South Dakota •	8 P.M.
1/21	ORAL ROBERTS •	2 P.M.
1/25	OMAHA • (PINK OUT)	5 P.M.
1/28	IUPUI •	2 P.M.

FEBRUARY (0-0)

2/4	at Denver •	3 P.M.
2/9	SOUTH DAKOTA •	6 P.M.
2/11	NORTH DAKOTA STATE •	3 P.M.
2/15	at Omaha •	8 P.M.
2/18	SOUTH DAKOTA STATE •	4 P.M.
2/22	at Western Illinois •	8 P.M.
2/25	at IUPUI •	3 P.M.

MARCH (0-0)

SUMMIT LEAGUE TOURNAMENT (Feb. 4-7)		
4-5	Quarterfinals	TBD
6	Semifinals	TBD
7	Championship	TBD

• Summit League Games

CAPS/BOLD = Home Games | All Times Eastern

FORT WAYNE REFERENCES

As a part of the Fort Wayne athletic department's rebranding effort that began in 2016, we respectfully ask to refer to any athletic-related subjects as "Fort Wayne" or the "Fort Wayne Mastodons." Please refer to the school as "IPFW" or "Indiana University - Purdue University Fort Wayne". "IPFW" is not acceptable when referring to the athletic teams. References of "Fort Wayne University" or "University of Fort Wayne" **ARE NOT ACCEPTABLE IN ANY CONTEXT.** Please do not use "Lady 'Dons" when referring to women's teams.



LAST GAME:

L, 73-51 at South Dakota State (Jan. 5)

COACH:

Niecee Nelson | 1st Season

SCORING LEADER:

De'Jour Young | 11.7 ppg

REBOUNDING LEADER:

De'Jour Young | 4.7 rpg

ASSIST LEADER:

Rachel Rinehart | 2.6 apg

STEAL LEADER:

Rachel Rinehart | 1.6 spg

BLOCK LEADER:

Selena Lozada | 0.7 bpg

TALE OF THE TAPE

CATEGORY	FORT WAYNE	NDSU
POINTS SCORED	56.1	66.4
POINTS ALLOWED	69.1	73.5
FG PCT.	.376	.386
OPP. FG PCT.	.461	.438
3-POINT PCT.	.266	.375
OPP. 3-POINT PCT.	.387	.313
FREE THROW PCT.	.784	.656
REBOUNDS	31.5	39.8
REBOUND MARGIN	-2.6	+1.1
ASSISTS	9.0	13.5
TURNOVERS	18.3	16.1
STEALS	6.5	5.9
BLOCKED SHOTS	1.5	2.5

LAST GAME:

W, 83-73 vs. South Dakota (Jan. 4)

COACH:

Maren Walseth | 3rd Season

SCORING LEADER:

Taylor Thunstedt | 17.4 ppg

REBOUNDING LEADER:

Brianna Jones | 7.9 rpg

ASSIST LEADER:

Sarah Jacobson | 3.7 apg

STEAL LEADER:

Sarah Jacobson | 1.5 spg

BLOCK LEADER:

Brianna Jones | 0.6 bpg

GAMEDAY INFORMATION

WHEN: Saturday, January 7 | 3 p.m. ET

WHERE: Fargo, N.D. | Scheels Center (5,700)

LIVE AUDIO: NDSU Sidarm All-Access

LIVE VIDEO: NDSU Sidarm All-Access

LIVE STATS: NDSU Live Stats

SERIES HISTORY: North Dakota State leads 15-8

LAST MEETING: Fort Wayne won 85-69 | February 27, 2016 | Fort Wayne, Ind.

MASTODON PROBABLE STARTERS (SUBJECT TO CHANGE)



KeShyra McCarver 5-10 Jr.

Toledo, Ohio / Whitmer

GP	GS	PPG	RPG	Ast	FG%	3FG%	FT%
16	15	6.7	4.31	12	.343	.310	.774



Anna Lappenküper 5-8 Fr.

Herne, Germany / Otto Hahn Gymnasium

GP	GS	PPG	RPG	Ast	FG%	3FG%	FT%
16	11	5.8	2.63	21	.374	.250	.800



De'Jour Young 5-7 So.

Fort Wayne, Ind. / Concordia Lutheran

GP	GS	PPG	RPG	Ast	FG%	3FG%	FT%
16	16	11.7	4.69	24	.441	.220	.898



Zaria Atkins 5-7 Fr.

Dudley, N.C. / Southern Wayne

GP	GS	PPG	RPG	Ast	FG%	3FG%	FT%
16	10	8.3	2.38	25	.362	.321	.873



Rachel Rinehart 5-8 Sr.

Angola, Ind. / Angola

GP	GS	PPG	RPG	Ast	FG%	3FG%	FT%
16	15	7.5	3.75	41	.464	.250	.800

NORTH DAKOTA STATE PROBABLE STARTERS (SUBJECT TO CHANGE)

#	Name	Ht.	Cl.	Hometown	PPG	RPG	APG	FG%	3FG%	FT%
11	G Taylor Thunstedt	5-8	Jr.	Spicer, Minn.	17.4	3.3	2.2	.394	.424	.767
12	G Sarah Jacobson	5-8	Fr.	Fargo, N.D.	10.1	4.1	3.7	.406	.385	.744
21	F Rylee Nudell	5-10	Fr.	Buffalo, N.D.	3.5	4.1	0.7	.388	.286	.636
24	G Tyrah Spencer	5-9	Fr.	Oakdale, Minn.	3.3	1.8	2.0	.283	.182	.778
34	F Brianna Jones	6-1	Sr.	Indianapolis, Ind.	7.9	7.9	1.2	.417	---	.531

2016-17 SUMMIT LEAGUE STANDINGS

(as of 1/5/2016)

Team	Summit				Overall					
	Rec.	Pct.	PF	PA	Rec.	Pct.	PF	PA	Last 10	Strk.
Oral Roberts	2-0	1.000	149	121	10-5	0.667	1058	947	8-2	Won 3
South Dakota	2-1	0.667	208	209	13-3	0.813	1208	1065	8-2	Lost 1
Western Illinois	2-1	0.667	214	181	12-4	0.750	1287	1018	7-3	Won 1
South Dakota State	2-1	0.667	204	182	11-4	0.733	1017	898	7-3	Won 1
North Dakota State	2-1	0.667	235	222	4-12	0.250	1063	1176	3-7	Won 2
IUPUI	1-1	0.500	110	116	11-4	0.733	1041	866	7-3	Lost 1
Omaha	1-1	0.500	129	111	8-7	0.533	1038	911	6-4	Won 2
Denver	0-3	0.000	206	243	3-13	0.188	1037	1141	1-9	Lost 7
Fort Wayne	0-3	0.000	160	230	3-13	0.188	898	1105	2-8	Lost 3

2016-17 SUMMIT LEAGUE PLAYERS OF THE WEEK

Date	Player	Pos.	School	Jan. 30
Nov. 14	Allison Arens	G	South Dakota	Feb. 6
Nov. 21	Macy Miller	G	South Dakota State	Feb. 14
	Emily Clemens	G	Western Illinois	Feb. 20
Nov. 29	Emily Clemens	G	Western Illinois	Feb. 27
Dec. 5	Mikale Rogers	C	IUPUI	
	Maria Martianez	F	Oral Roberts	
Dec. 12	Jaycee Bradley	G	South Dakota	
	Emily Clemens	G	Western Illinois	
Dec. 19	Mikaela Shaw	G	Omaha	
Dec. 26	Mikale Rogers	C	IUPUI	
Jan. 2	Allison Arens	G	South Dakota	
Jan. 9				
Jan. 17				
Jan. 23				

SUMMIT LEAGUE COMPOSITE SCHEDULE

Monday, December 12

Mayville State 44, North Dakota State 93

Wednesday, December 14

South Dakota State 30, Louisville 83

Tennessee Tech 63, IUPUI 77

Mid-American Christian 63, Oral Roberts 98

Thursday, December 15

Northwestern (Iowa) 57, South Dakota 100

Friday, December 16

Seattle 75, Denver 72

Saturday, December 17

Western Illinois 54, Chicago State 50

Oral Roberts 52, Arizona State 79

Sunday, December 18

Omaha 70, Florida A&M 50

IUPUI 72, Belmont 78

Monday, December 19

South Dakota 97, Northern Illinois 83

North Dakota State 67, UTRGV 81

Tuesday, December 20

Omaha 41, UCF 81

South Dakota 68, Southern Illinois 57

Northeastern 72, Denver 69

North Dakota State 59, UC Santa Barbara 66

Illinois State 50, Western Illinois 80

Wednesday, December 21

IUPUI 67, Purdue 62

Oral Roberts 70, Arkansas 60

South Dakota State 78, Wichita State 58

Wednesday, December 28

Ind.-Northwest 36, IUPUI 89

Denver 64, South Dakota 70

South Dakota State 69, North Dakota State 66

Oral Roberts 67, Omaha 65

Saturday, December 31

North Dakota State 86, Denver 80

South Dakota State 62, South Dakota 65

Western Illinois 52, IUPUI 66

Sunday, January 1

York (Neb.) 37, Omaha 106

Wednesday, January 4

South Dakota 73, North Dakota State 83

Thursday, January 5

IUPUI 44, Omaha 64

Denver 62, Western Illinois 87

Saturday, January 7

IUPUI at South Dakota 2 P.M.

Omaha at South Dakota State 3 P.M.

Oral Roberts at Western Illinois 5:30 P.M.

Wednesday, January 11

IUPUI at South Dakota State 8 P.M.

Western Illinois at Omaha 8 P.M.

South Dakota at Oral Roberts 8 P.M.

Saturday, January 14

South Dakota State at Oral Roberts 1:30 P.M.

Denver at IUPUI 3 P.M.

South Dakota at Omaha 3 P.M.

North Dakota State at Western Illinois 5:30 P.M.

Wednesday, January 18

Denver 64, South Dakota State 8 P.M.

South Dakota State at Denver 9 P.M.

Thursday, January 19

Oral Roberts at IUPUI 7 P.M.

Saturday, January 21

Western Illinois at South Dakota State 3 P.M.

Omaha at Denver 3 P.M.

North Dakota State at IUPUI 7 P.M.

Wednesday, January 25

IUPUI at Western Illinois 8 P.M.

Denver at Oral Roberts 8 P.M.

Thursday, January 26

North Dakota State at South Dakota 8 P.M.

Saturday, January 28

Western Illinois at South Dakota 2 P.M.

South Dakota State at Omaha 3 P.M.

Oral Roberts at North Dakota State 3 P.M.

Wednesday, February 1

Western Illinois at Oral Roberts 8 P.M.

South Dakota at Denver 9 P.M.

FORT WAYNE AT A GLANCE

GENERAL INFO

Address	2101 E. Coliseum Blvd.
City/Zip	Fort Wayne, IN / 46805
Founded	1964
Enrollment	13,459
Nickname	Mastodons
Colors	Royal Blue and White
Affiliation	NCAA Division I
Conference	The Summit League
Chancellor	Vicky Carwein
Athletic Director	Kelley Hartley Hutton

MEDIA SERVICES

Asst. Director / WBB Contact	Brian Alden
E-mail	aldenbs@ipfw.edu
Office Phone	(260) 481-6646
Cell Phone	(859) 468-8963
Office Fax	(260) 481-6002

COACHING STAFF

Head Coach	Niecee Nelson
Alma Mater 'Yr.	Concordia Portland '02
Record at School/Yrs.	3-13 / 1st
Career Record/Yrs.	Same
Assistant Coach	Ty Shaw (1st season)
Alma Mater 'Yr.	Albertson '02
Assistant Coach	Marcie Alberts (4th season)
Alma Mater 'Yr.	Ohio State '97
Assistant Coach	Carol Duncan (1st season)
Alma Mater 'Yr.	Purdue '06
Graduate Assistant Coach	Haley Seibert (2nd season)
Alma Mater 'Yr.	IPFW '15

SEASON IN REVIEW

2015-16 Overall Record	7-23
2015-16 Summit Record/Finish	3-13 / 7th
Letterwinners Returning/Lost	6 / 6
Starters Returning/Lost	3 / 2

HISTORY

First Year of Basketball	1976-77
First Year of NCAA Division I Basketball	2001-02
First Year in The Summit League	2007-08
All-Time Record	460-613
All-Time Division I Record	153-296
All-Time Summit League Record	68-87
All-time NCAA Tournament Record	0-3
Years in Post-Season play	12
Last Post-Season Game	2013-14 (WBI)
Result	L, 84-71 at UIC

First Varsity Game	12/9/76 at Huntington; L, 41-38
500th Game	1/9/97 at Saint Joseph's (IN); W, 73-61
750th Game	1/25/06 vs. Butler; L, 70-60
1,000th Game	3/19/14 at UIC; L, 84-71

First Program Victory	12/11/76 vs. Grace; W, 72-31
250th Program Victory	2/10/96 at Kentucky Wesleyan; W, 91-76

FORT WAYNE MASTODONS ROSTER

No.	Name	Ht.	Pos.	Cl.	Hometown	High School / Previous School
1	Yuleska Ramirez-Tejeda (<i>YOU-less-kuh</i>)	5-7	G	Fr.	Cambridge, Mass.	Cambridge Rindge and Latin
2	Nia Thomas (<i>KNEE-uh</i>)	5-8	G	So.	Liberty Township, Ohio	Lakota East / Lincoln Trail College
3	KeShyra McCarver (<i>Key-SHY-Ruh</i>)	5-10	F	Jr.	Toledo, Ohio	Whitmer
5	Hannah Hess	5-9	G	Fr.	Oregon, Ohio	Clay
12	Anna Lappenküper (<i>AHH-nuh LAH-pen-cooper</i>)	5-8	G	Fr.	Herne, Germany	Otto Hahn Gymnasium
13	De'Jour Young (<i>D-zhur</i>)	5-7	G	So.	Fort Wayne, Ind.	Concordia Lutheran
15	Selena Lozada (<i>Lo-zaah-duh</i>)	6-2	F	Sr.	Perth Amboy, N.J.	Western Guilford / Guilford Technical CC
21	Isis Parker	6-0	F	So.	Cleveland, Ohio	Solon
22	Zaria Atkins	5-7	G	Fr.	Dudley, N.C.	Southern Wayne
23	Peyton Fallis (<i>Fau-liss</i>)	5-10	G	So.	Indianapolis, Ind.	Heritage Christian
31	Rachel Rinehart	5-8	G	Sr.	Angola, Ind.	Angola
32	Lindley Kistler	6-0	F	Fr.	Fort Wayne, Ind.	Homestead

Head Coach: Niecee Nelson (<i>KNEE-see</i>)
Assistant Coaches: Marcie Alberts, Carol Duncan and Ty Shaw
Graduate Assistant Coach: Haley Seibert (<i>sigh-BERT</i>)

NORTH DAKOTA STATE BISON ROSTER

No.	Name	Pos.	Ht.	Cl.	Hometown	High School / Previous School
4	Megan Gamble	G	5-7	So.	Omaha, Neb.	Central
5	Anna Goodhope	F	5-11	Fr.	Sioux Falls, S.D.	Sioux Falls Washington
11	Taylor Thunstedt	G	5-8	Jr.	Spicer, Minn.	New London-Spicer
12	Sarah Jacobson	G	5-8	Fr.	Fargo, N.D.	Shanley
20	Autumn Ogden	F	5-11	Fr.	Marshall, Wis.	Monona Grove
21	Rylee Nudell	F	5-10	Fr.	Buffalo, N.D.	Maple Valley
23	Kennedy Childers	G	5-9	So.	Johnston, Iowa	Dowling Catholic
24	Tyrah Spencer	G	5-9	Fr.	Oakdale, Minn.	Bloomington Kennedy
25	Hannah Breske	G	5-11	Sr.	Casselton, N.D.	Central Cass
30	Emily Spier	F	6-1	Sr.	Buffalo, Minn.	Buffalo
32	Reilly Jacobson	F	6-2	Fr.	Waukee, Iowa	Waukee
34	Brianna Jones	F	6-1	Sr.	Indianapolis, Ind.	Warren Central / Danville Area CC

Head Coach: Maren Walseth
Assistant Coaches: Keith Dickhudt, Ryan Martin and Morgan Paige

All-Time Results vs. North Dakota State

12/7/1996	A	#1 North Dakota State	L, 55-83	Fargo, N.D.
1/21/2006	A	North Dakota State	L, 68-79	Fargo, N.D.
2/26/2006	H	NORTH DAKOTA STATE	W, 77-64	Fort Wayne, Ind.
2/8/2007	A	North Dakota State	L, 72-89	Fargo, N.D.
3/3/2007	H	NORTH DAKOTA STATE	L, 80-85	Fort Wayne, Ind.
1/7/2008	A	North Dakota State	L, 47-87	Fargo, N.D.
2/2/2008	H	NORTH DAKOTA STATE	L, 65-67	Fort Wayne, Ind.
1/5/2009	H	NORTH DAKOTA STATE	L, 59-63	Fort Wayne, Ind.
1/31/2009	A	North Dakota State	L, 65-72	Fargo, N.D.
1/23/2010	A	North Dakota State	L, 52-64	Fargo, N.D.
2/22/2010	H	NORTH DAKOTA STATE	L, 68-72	Fort Wayne, Ind.
1/24/2011	A	North Dakota State	W, 68-55	Fargo, N.D.
2/19/2011	H	NORTH DAKOTA STATE	W, 79-46	Fort Wayne, Ind.
12/29/2011	A	North Dakota State	L, 70-77	Fargo, N.D.
1/30/2012	H	NORTH DAKOTA STATE	L, 50-64	Fort Wayne, Ind.
1/10/2013	H	NORTH DAKOTA STATE	W, 65-58	Fort Wayne, Ind.
2/9/2013	A	North Dakota State	W, 70-58	Fargo, N.D.
1/9/2014	A	North Dakota State	W, 98-89 (20T)	Fargo, N.D.
2/8/2014	H	NORTH DAKOTA STATE	W, 57-51	Fort Wayne, Ind.
1/17/2015	A	North Dakota State	L, 60-81	Fargo, N.D.
2/21/2015	H	NORTH DAKOTA STATE	L, 66-72	Fort Wayne, Ind.
1/23/2016	A	North Dakota State	L, 85-94	Fargo, N.D.
2/27/2016	H	NORTH DAKOTA STATE	W, 85-69	Fort Wayne, Ind.

Overall: 8-15
League: 7-11
Home: 5-6
Away: 3-9
Neutral: 0-0

ON THIS DATE...

JANUARY 7 (4-10)		
2016	WESTERN ILLINOIS	L, 74-78
2012	WESTERN ILLINOIS	W, 73-54
2009	AT #25 IOWA STATE	L, 57-84
2008	AT NORTH DAKOTA STATE	L, 47-87
2006	RADFORD	L, 77-79 OT
2004	AT AIR FORCE	W, 83-70
2003	AT MURRAY STATE	L, 62-79
1999	INDIANAPOLIS	L, 65-96
1995	AT ASHLAND	L, 75-76
1993	AT KENTUCKY WESLEYAN	W, 61-57
1989	AT NORTHERN KENTUCKY	L, 74-91
1985	AT WRIGHT STATE	L, 72-73
1984	VS GREEN BAY	L, 76-89
1982	SAINT JOSEPH'S (IN)	W, 45-42

ALL-TIME IN JANUARY...

BY DAY AND LOCATION	
Sunday	2-4
Monday	17-20
Tuesday	8-17
Wednesday	10-14
Thursday	37-47
Friday	2-12
Saturday	57-87
Home	82-91
Away	52-105
Neutral	0-4

ALL-TIME RECORD...

BY DAY OF THE WEEK	
Sunday	14-41
Monday	36-52
Tuesday	45-59
Wednesday	36-46
Thursday	104-123
Friday	32-52
Saturday	189-239

ALL-TIME RECORD...

BY MONTH	
November	60-84
December	110-141
January	134-199
February	139-161
March	17-29

Fort Wayne vs.

SUMMIT LEAGUE	All-Time	Under Nelson
Denver	3-4	0-0
IUPUI	12-17	0-0
North Dakota State	8-15	0-0
Omaha	4-4	0-0
Oral Roberts	5-11	0-1
South Dakota	3-8	0-0
South Dakota State	1-28	0-1
Western Illinois	10-10	0-1
TOTALS	46-101	0-3

HEAD COACH NIECEE NELSON

Niecee Nelson was appointed as Fort Wayne's women's basketball head coach on April 18, 2016. An assistant coach at the University of San Diego for 11 seasons, she is the 14th head coach in the 40-year history of the program. Nelson is no stranger to Fort Wayne, however, having served as an assistant coach for the Mastodons for one season during 2004-05, after getting her start in coaching as a graduate assistant at the University of Wyoming for two seasons (2002-04).

Nelson helped lead San Diego to an overall record of 222-124 since 2005, including five consecutive 20-win seasons and postseason WNIT appearances. The Toreros, under the direction of head coach Cindy Fisher, made one NCAA Tournament appearance since '05, winning the WCC Tournament in 2008, and have made six overall appearances in the WNIT, first advancing to the event in 2007. USD was 25-8 in 2015-16, tying for the second-most wins in program history while advancing to the third round of the WNIT.

Nelson's on court responsibilities at USD included point guard and shooting guard development, while serving as the program's offensive coordinator. She has helped develop 13 All-WCC First Team guards, including Dominique Conners, a three-time honoree and USD's all-time leader in points and steals. Nelson also helped develop Amanda Rego, the program's only WCC Player of the Year (2006-07), who was the national assist leader that season, and is the school's career leader in assists.

Nelson's off court responsibilities at USD included serving as the program's academic coordinator, budget management and ordering of team equipment, including uniforms and apparel, as well as managing team travel. Additionally, she shared in the duties of recruiting as well as the opponent scouting and game strategy. Nelson has also assisted in creating practice plans and individual workouts.

Nelson was an assistant at Fort Wayne during 2004-05, with primary responsibilities in team travel, post player development, marketing and academic support. Within two months of arriving at Fort Wayne, she was promoted to recruiting coordinator, leading the charge in overseas recruiting into Brazil and Europe.

Prior to Fort Wayne, Nelson served as a graduate assistant at Wyoming with Coach Fisher. She worked closely with the staff and team on practice and game day coaching, individual workouts, academic support, film exchange, and guard and post development.

Nelson earned 2001 NAIA All-America honors at Concordia University in Portland, Oregon. A two-time team captain, she was named to the 2001 Lutheran Brotherhood All-America Team. Nelson was a two-time All-Cascade Conference First Team selection (2001, 2002), and the 1998 Cascade Conference Freshman of the Year.

Nelson graduated from Concordia in 2002 with a Bachelor of Arts degree in Education with an emphasis in Elementary Education, adding minors in Business Marketing and Psychology. She earned a Master of Science degree in Kinesiology and Health with an emphasis in Health Promotion from Wyoming in 2004.

Niecee and her husband, Steve, have two children: son Sebastian and daughter Skyler.

FORT WAYNE IN SUMMIT LEAGUE AND NCAA STATISTICS

TEAM	(of 345)		(of 9)
	Statistic	NCAA	Summit
Assist Turnover Ratio	0.49	326	9
Assists	144	291	9
Assists Per Game	9	337	9
Blocked Shots	24	322	9
Blocked Shots Per Game	1.5	331	9
Fewest Fouls	319	338	9
Fewest Turnovers	292	333	9
Field-Goal Percentage	37.7	258	9
Field-Goal Percentage Defense	46.1	340	9
Free Throw Attempts	264	110	5
Free Throws Made	207	47	2
Free-Throw Percentage	78.4	10	2
Personal Fouls Per Game	19.9	290	9
Rebound Margin	-2.6	250	8
Rebounds	504	234	9
Rebounds Per Game	31.5	338	9
Scoring Defense	69.1	267	7
Scoring Margin	-12.9	316	9
Scoring Offense	56.1	308	9
Steals	104	208	6
Steals Per Game	6.5	278	6
Three Pt FG Defense	38.7	342	9
Three-Point Field Goals Made	53	300	9
Three-Point Field Goals Per Game	3.3	330	9
Three-Point Field-Goal Percentage	26.6	309	9
Turnover Margin	-3.13	301	9
Turnovers Forced	15.13	245	4
Turnovers Per Game	18.3	269	9

INDIVIDUAL

	NCAA	Summit
Free-Throws Made		
Zaria Atkins	48	124
Free-Throw Percentage		
De'Jour Young	89.8	21
Zaria Atkins	87.3	31

As 1/5/2017
* NCAA rank does not include schools reclassifying

Gates Center Attendance Records			
1.	1/19/2002	Toledo	1,827
2.	12/10/2006	Indiana	1,801
3.	11/19/2004	Bowling Green	1,438
4.	12/29/2013	Ball State	1,278
5.	1/24/2015	Denver	1,215
6.	1/13/1996	Southern Indiana	1,150
7.	12/6/2014	Northern Kentucky	1,147
8.	12/6/2012	Purdue	1,124
9.	11/12/2013	Indiana	1,085
10.	11/11/2016	Belmont	1,049

Season and Career Totals 2016-17 Career

DOUBLE-DOUBLES		
KeShyra McCarver	-	1

30-PLUS POINT GAMES		
Rachel Rinehart	-	1

20-PLUS POINT GAMES		
Rachel Rinehart	-	4
KeShyra McCarver	-	3
Peyton Fallis	1	1
De' Jour Young	1	1

DOUBLE-DIGIT SCORING GAMES		
Rachel Rinehart	6	31
De' Jour Young	10	15
KeShyra McCarver	4	9
Zaria Atkins	6	6
Peyton Fallis	2	4
Selena Lozada	2	4
Anna Lappenküper	3	3
Lindley Kistler	1	1

10-PLUS REBOUND GAMES		
KeShyra McCarver	-	1
De' Jour Young	-	1
Rachel Rinehart	1	1

5-PLUS ASSIST GAMES		
Rachel Rinehart	4	17
Anna Lappenküper	2	2
De' Jour Young	1	1
Zaria Atkins	1	1

3-PLUS STEAL GAMES		
Rachel Rinehart	2	11
De' Jour Young	1	5
KeShyra McCarver	1	4
Peyton Fallis	-	2
Zaria Atkins	1	1

3-PLUS THREE-POINT FG GAMES		
KeShyra McCarver	-	3
Rachel Rinehart	1	3
Peyton Fallis	1	2
Lindley Kistler	1	1
Anna Lappenküper	1	1

STARTS		
Rachel Rinehart	15	68
KeShyra McCarver	15	36
De' Jour Young	16	36
Selena Lozada	11	16
Anna Lappenküper	11	11
Zaria Atkins	10	10
Isis Parker	1	2
Peyton Fallis	1	2

5-5-5 GAMES		
At least 5 in three categories (pts, rbs, ast, stl or blk)		
Rachel Rinehart	2	6
De' Jour Young	1	1

Single Game Stat Leaders

	2016-17	Career
TEAM LEADER IN POINTS		
Rachel Rinehart	2	9
De'Jour Young	8	8
KeShyra McCarver	1	3
Zaria Atkins	3	3
Selena Lozada	1	1
Lindley Kistler	1	1
Peyton Fallis	1	1

TEAM LEADER IN REBOUNDS		
De'Jour Young	7	13
Rachel Rinehart	2	12
KeShyra McCarver	4	10
Selena Lozada	3	4
Isis Parker	1	2
Lindley Kistler	1	1
Zaria Atkins	1	1

TEAM LEADER IN ASSISTS		
Rachel Rinehart	10	34
De'Jour Young	3	7
Anna Lappenküper	4	4
Zaria Atkins	4	4
KeShyra McCarver	-	3
Peyton Fallis	2	2
Isis Parker	1	1

TEAM LEADER IN STEALS		
Rachel Rinehart	7	33
De'Jour Young	5	12
KeShyra McCarver	5	5
Zaria Atkins	4	4
Anna Lappenküper	3	3
Peyton Fallis	1	3
Selena Lozada	3	3
Isis Parker	1	1
Yuleska Ramirez-Tejeda	1	1
Nia Thomas	1	1

TEAM LEADER IN BLOCKS		
Selena Lozada	8	10
KeShyra McCarver	2	6
Isis Parker	3	5
De'Jour Young	-	4
Rachel Rinehart	-	2
Lindley Kistler	2	2
Anna Lappenküper	2	2
Peyton Fallis	-	1

POINTS OFF THE BENCH		
Rachel Rinehart	1	8
KeShyra McCarver	1	7
Peyton Fallis	3	7
De'Jour Young	-	3
Anna Lappenküper	3	3
Selena Lozada	3	3
Isis Parker	1	2
Lindley Kistler	1	1
Zaria Atkins	1	1
Yuleska Ramirez-Tejeda	1	1

Miscellaneous Game Stats

SCORES FIRST	
Fort Wayne	4
Opponents	12

HOW FORT WAYNE SCORED FIRST POINT	
Free Throw	3
Jumper	4
Layup	8
Three-Pointer	1

FIRST FORT WAYNE POINT SCORED BY	
KeShyra McCarver	5
De'Jour Young	4
Peyton Fallis	2
Anna Lappenküper	2
Isis Parker	1
Selena Lozada	1
Rachel Rinehart	1

SCORING RUNS OF 10-0 OR BETTER	
Fort Wayne	3
Opponents	14

TIP-OFFS CONTROLLED	
Fort Wayne	4
Opponents	12
Selena Lozada	1/11 (.091)
KeShyra McCarver	3/5 (.600)

FORT WAYNE'S FIRST SUBSTITUTION	
Isis Parker	8
Peyton Fallis	5
Anna Lappenküper	3
Zaria Atkins	1
Lindley Kistler	1
Selena Lozada	1
Yuleska Ramirez-Tejeda	1

PLAYERS FOULED OUT	
Fort Wayne	12
Opponents	6

Isis Parker	4
Rachel Rinehart	2
Anna Lappenküper	2
KeShyra McCarver	2
Selena Lozada	1
Peyton Fallis	1

THREE- AND FOUR-POINT PLAYS	
Fort Wayne	16
Opponents	15

Rachel Rinehart	6	25
KeShyra McCarver	2	12
De'Jour Young	1	4
Zaria Atkins	3	3
Peyton Fallis	1	2
Selena Lozada	2	2
Isis Parker	-	1
Yuleska Ramirez-Tejeda	1	1

BENCH POINTS	
Fort Wayne	281 (17.6 ppg.)
Opponents	296 (18.5 ppg.)

LARGEST HALFTIME LEAD
12 (35-23) vs Defiance (11/12/16)

LARGEST HALFTIME DEFICIT
28 (45-17) vs Miami (Ohio) (12/19/16)

LARGEST WIN
18 (76-58) vs Defiance (11/12/16)

LARGEST DEFEAT
26 (3 times)
MR - (82-56) at Oral Roberts (12/31/16)

LARGEST LEAD
19 (42-23, 7:06, 3rd) vs Defiance (11/12/16)

LARGEST DEFICIT
34 (44-10, 2:43, 2nd) vs Miami (Ohio) (12/19/16)

LARGEST DEFICIT OVERCOME TO WIN
8 (34-26, 3:47, 2nd) vs Eastern Kentucky (12/21/16)

LARGEST LEAD GIVEN UP IN LOSS
10 (2 times)
(27-17, 7:07, 2nd) vs. Oakland (11/19/16)

MOST CONSECUTIVE POINTS
11 (3 times)
MR - (6:07 - 2:34 1st) at South Dakota State (11/5/17)

MOST CONSECUTIVE POINTS BY OPP.
19 (2:28 1st - 5:32 2nd) vs Miami (Ohio) (12/19/16)

LONGEST WINNING STREAK
-

LONGEST LOSING STREAK
7 (11/14/16 - 12/6/16)

LARGEST HOME CROWD
1,789 vs Coastal Carolina (11/26/16)

LARGEST ROAD CROWD
1,276 at South Dakota State (1/5/17)

MOST TIME LEADING
36:48 vs Defiance (11/12/16)

MOST TIME LEADING IN LOSS
18:49 vs Trine (11/14/16)

MOST TIME WITH SCORE TIED
6:12 at Wright State (12/20/16)

MOST TIME TRAILING
39:50 at Oral Roberts (12/31/16)

MOST LEAD CHANGES
10 vs Trine (11/14/16)

MOST TIE SCORES
10 (2 times)
MR - at Wright State (12/20/16)

STARTING LINEUPS

Game	G	G	G	G/F	F
Indiana Tech (Ex)	Lappenküper	Young	Rinehart	Parker	Lozada
Belmont	Lappenküper	Young	Rinehart	Parker	Lozada
Defiance	Lappenküper	Young	Rinehart	McCarver	Lozada
Trine	Lappenküper	Young	Rinehart	McCarver	Lozada
at Butler	Lappenküper	Young	Rinehart	McCarver	Lozada
Oakland	Lappenküper	Young	Rinehart	Fallis	McCarver
Coastal Carolina	Lappenküper	Young	Rinehart	McCarver	Lozada
at Kent State	Lappenküper	Young	Atkins	McCarver	Lozada
at Illinois	Atkins	Young	Rinehart	McCarver	Lozada
at Western Michigan	Atkins	Young	Rinehart	McCarver	Lozada
at UIC	Atkins	Young	Rinehart	McCarver	Lozada
vs. Miami (Ohio)	Atkins	Young	Rinehart	McCarver	Lozada
at Wright State	Atkins	Young	Rinehart	Lappenküper	McCarver
vs. Eastern Kentucky	Atkins	Young	Rinehart	McCarver	Lozada
Western Illinois	Atkins	Young	Rinehart	Lappenküper	McCarver
at Oral Roberts	Atkins	Young	Rinehart	Lappenküper	McCarver
at South Dakota State	Atkins	Young	Rinehart	Lappenküper	McCarver
at North Dakota State					
Denver					
at South Dakota					
Oral Roberts					
Omaha (Pink Out)					
IUPUI					
at Denver					
South Dakota					
North Dakota State					
at Omaha					
South Dakota State					
at Western Illinois					
at IUPUI					

BY ROTATION

0-1	Lappenküper	Young	Rinehart	Parker	Lozada
1-3	Lappenküper	Young	Rinehart	McCarver	Lozada
0-1	Lappenküper	Young	Rinehart	Fallis	McCarver
0-1	Lappenküper	Young	Atkins	McCarver	Lozada
2-3	Atkins	Young	Rinehart	McCarver	Lozada
0-4	Atkins	Young	Rinehart	Lappenküper	McCarver

Fort Wayne vs.

16-17 OPPONENTS	All-Time	Under Nelson
Belmont	0-3	0-1
Butler	4-6	0-1
Coastal Carolina	2-2	0-1
Defiance	1-1	1-0
Denver	3-4	0-0
Eastern Kentucky	1-1	1-0
Illinois	0-5	0-1
IUPUI	12-17	0-0
Kent State	1-1	0-1
Miami (Ohio)	1-2	0-1
North Dakota State	8-15	0-0
Oakland	8-16	0-1
Omaha	4-4	0-0
Oral Roberts	5-11	0-1
South Dakota	3-8	0-0
South Dakota State	1-28	0-1
Trine	16-5	0-1
UIC	1-3	1-0
Western Illinois	10-10	0-1
Western Michigan	1-4	0-1
Wright State	5-8	0-1
TOTALS	87-154	3-13

WHY MASTODONS?...

It all started about 10,000 years ago...

That's when mastodons roamed the southern Great Lakes region of North America. These stocky versions of modern elephants reached heights of about ten feet at the shoulder, with tusks that curved upward that were six feet or more in length. Mastodons were browsers who fed mostly on leaves and twigs from small trees and shrubs.

One such mastodon found its final resting place about two miles south of Angola, Indiana, on land that would eventually become part of Orsie Routsong's farm. In the fall of 1968, Routsong decided to expand a small pond on his property. An excavator was hired and instructed to pile the excavated material around the edge of the pond. Several days after the excavation was finished a heavy rain storm pounded the piles of dirt.

The next day, a young neighbor boy of Routsong's discovered a large bone in one of the dirt piles. Routsong knew it was something out of the ordinary, so he called Jack Sunderman, chair of the IPFW Geology Department, to identify the bone, and to ask for advice on what to do with it. Sunderman says his first question was, "How big is the bone," with Routsong's answer being "pretty big, maybe 3 or 4 feet long."

When Sunderman got to the farm, he identified the bone as a leg bone of a mastodon. He told Routsong a skeleton like this would have scientific and instructional value if a large portion of it could be located. Routsong agreed, and also agreed to have the IPFW Geology Department do the excavation. Sunderman got two more faculty members, Geoffrey Matthews and Bernd Erdtmann, and several geology students to help in the project.

After all the mastodon bones were collected, cleaned, and preserved, Routsong agreed to have the adult mastodon skeleton placed on permanent display at IPFW; the skull of a nearby baby mastodon is now on loan to Science Central.

In the spring of 1970, The Communicator (IPFW's student newspaper) began a drive to come up with a mascot for IPFW. Some of the suggested choices included the Boiler-Hoosiers, Warhawks, Marauders, Frontiersmen, Pioneers, Elfs, and Hobbits. Those names and others came from student suggestions. Steve Pettyjohn, who served as the student body president in 1968-69, wrote a letter to the editor about the school mascot. In his letter, Pettyjohn extolled the virtues of choosing the mastodon as IPFW's mascot: "It sounds different, strange - that's exactly why. It's different and yes, even strange. For God's Sakes, let's have the courage to be a little different."

In the meantime, former Indiana Congressman Mark Souder, who served as student body president in 1969-70, recalls being lobbied by the Geology Club to choose the mastodon.

According to Nusbaumer, "Souder appointed a committee in student government to select a name although he was lobbying hard for the mastodon." After some discussion on the subject, Souder says a vote was taken by the committee and the mastodon came out the winner. Souder finished his recollection with these thoughts. "History shows that the advocacy of the geology club was correct. The fast, decisive action of the elected student government—though it did not please everyone and was not a precedent that the University desired to see—has also been upheld by history as IPFW regularly scores high in any list of unique university nicknames; even in this era when everybody strives to be different. We did it decades ago."

WHAT IS A MASTODON?...

(ACCORDING TO WIKIPEDIA)

Mastodons are any species of extinct proboscideans (mammals with tusks and long, muscular trunks) in the genus Mammut, distantly related to elephants, that inhabited North and Central America during the late Miocene or late Pliocene up to their extinction at the end of the Pleistocene 10,000 to 11,000 years ago. Mastodons lived in herds and were predominantly forest dwelling animals that fed on a mixed diet of browsing and grazing with a seasonal preference for browsing, in contrast to living elephants that are mostly grazing animals.

Modern reconstructions based on partial and skeletal remains reveal that mastodons were very similar in appearance to elephants and, to a lesser degree, mammoths, though not closely related to either one. Compared to mammoths, mastodons had shorter legs, a longer body and were more heavily muscled, a build similar to that of the current Asian elephants. The average body size of the species was around 2.3 m (7 ft 7 in) in height at the shoulders, corresponding to a large female or a small male, but large males could grow up to 2.8 m (9 ft 2 in) in height and weigh as much as 4.5 tonnes (5 short tons).

IPFW WHEN...	2016-17	NELSON
Overall	3-13	3-13
Home	1-5	1-5
Road	1-7	1-7
Neutral	1-1	1-1
At Memorial Coliseum	0-2	0-2
Summit League	0-3	0-3
Summit League Home	0-1	0-1
Summit League Road	0-2	0-2
Non-League	3-10	3-10
Non-League Home	1-4	1-4
Non-League Road	1-5	1-5
Following a win	0-3	0-3
Following a loss	3-9	3-9
Against top 25 (AP) teams	0-0	0-0
Against Mid-Major top 25 teams	0-1	0-1
In Overtime	0-0	0-0
In Multiple Overtimes	0-0	0-0
Regular Season Tournaments	1-2	1-2
Postseason	0-0	0-0
Wins Tip	1-3	1-3
Scores First	1-3	1-3
Leads after 1st quarter	1-3	1-3
Trails after 1st quarter	2-10	2-10
Tied after 1st quarter	0-0	0-0
Leads at half	2-2	2-2
Trails at half	1-10	1-10
Tied at half	0-1	0-1
Leading with 5:00 left	3-0	3-0
Trailing with 5:00 left	0-13	0-13
Tied with 5:00 left	0-0	0-0
Shoots 50% or better	0-0	0-0
Shoots less than 50%	3-13	3-13
Opponent shoots ≥ 50%	0-3	0-3
Opponent shoots < 50%	3-10	3-10
Shoots better than opp.	3-1	3-1
Shoots worse than opp.	0-12	0-12
Makes 5+ 3-Pt. shots	2-4	2-4
Makes 9+ 3-Pt. shots	0-0	0-0
More 3-Pt. made than opp.	2-4	2-4
Has equal 3-Pt. made	0-0	0-0
Fewer 3-Pt. made than opp.	1-9	1-9
Shoots 3-Pt. better than opp.	2-3	2-3
Shoots 3-Pt. worse than opp.	1-10	1-10
Shoots 3-Pt. 35% or better	2-4	2-4
Shoots 3-Pt. less than 35%	1-8	1-8
Opp. Shoots 3-Pt. 35% or better	0-12	0-12
Opp. Shoots 3-Pt. less than 35%	3-1	3-1
More FTs made than opp.	3-5	3-5
Has equal FTs made	0-0	0-0
Fewer FTs made than opp.	0-8	0-8
Out-rebounds opp.	3-4	3-4
Has equal rebounds	0-1	0-1
Is out-rebounded	0-8	0-8
More turnovers than opp.	2-9	2-9
Has equal turnovers as opp.	0-0	0-0
Fewer turnovers than opp.	1-4	1-4
More assists than opp.	1-1	1-1
Has equal assists	1-0	1-0
Fewer assists than opp.	1-12	1-12
More blocks than opp.	0-2	0-2
Has equal blocks	0-0	0-0
Fewer blocks than opp.	3-11	3-11
More steals than opp.	2-2	2-2
Has equal steals	0-0	0-0
Fewer steals than opp.	1-11	1-11
More fouls than opp.	1-10	1-10
Has equal fouls	0-0	0-0
Fewer fouls than opp.	2-3	2-3

Plays in the state of Indiana	1-6	1-6
Plays outside Indiana	2-7	2-7
Plays in Eastern Time Zone	2-10	2-10
Plays in Central Time Zone	1-3	1-3
Playe in Mountain Time Zone	0-0	0-0
Plays in Pacific Time Zone	0-0	0-0
Plays during the day	2-7	2-7
Plays at night (5pm or later)	1-6	1-6
Plays in November	1-6	1-6
Plays in December	2-6	2-6
Plays in January	0-1	0-1
Plays in February	0-0	0-0
Plays in March	0-0	0-0
Plays on Sunday	0-0	0-0
Plays on Monday	0-2	0-2
Plays on Tuesday	0-2	0-2
Plays on Wednesday	1-3	1-3
Plays on Thursday	0-1	0-1
Plays on Friday	0-2	0-2
Plays on Saturday	2-3	2-3
Attendance is ≤ 999	3-8	3-8
Attendance is ≥ 1,000	0-5	0-5
Margin is 1 point	0-0	0-0
Margin is between 2-5	0-0	0-0
Margin is between 6-10	2-2	2-2
Margin is between 11-20	1-3	1-3
Margin is more than 20	0-7	0-7
Scores ≤ 49 pts.	0-3	0-3
Scores 50-59 pts.	0-7	0-7
Scores 60-69 pts.	2-2	2-2
Scores 70-79 pts.	1-1	1-1
Scores 80-89 pts.	0-0	0-0
Scores 90-99 pts.	0-0	0-0
Scores 100+ pts.	0-0	0-0
Opponent Scores ≤ 49 pts.	0-0	0-0
Opponent scores 50-59 pts.	3-1	3-1
Opponent scores 60-69 pts.	0-4	0-4
Opponent scores 70-79 pts.	0-4	0-4
Opponent scores 80-89 pts.	0-4	0-4
Opponent scores 90-99 pts.	0-0	0-0
Opponent scores 100+ pts.	0-0	0-0
Force 20 or more turnovers	0-2	0-2
Make 10 or more steals	1-1	1-1
1 or more 20+ point scorer	0-2	0-2
No 20+ point scorer	3-11	3-11
≤ 2 players score 10+ pts.	2-9	2-9
3 players score 10+ pts.	0-4	0-4
4+ players score 10+ pts.	1-0	1-0
≥ 1 player with 10+ reb.	0-1	0-1
≥ 1 player with double-double	0-0	0-0
≥ 1 player with 5+ 3-Pt. made	0-0	0-0
No player with 5+ 3-Pt. made	3-12	3-12
No IPFW player fouls out	1-7	1-7
1+ IPFW player fouls out	2-6	2-6
More bench points	2-5	2-5
Has equal bench points	0-0	0-0
Fewer bench points	1-8	1-8
More points in the paint	2-1	2-1
Has equal points in the paint	0-0	0-0
Fewer points in the paint	1-12	1-12
More points off turnovers	1-2	1-2
Has equal points off turnovers	0-1	0-1
Fewer points off turnovers	2-10	2-10
More 2nd chance points	3-5	3-5
Has equal 2nd chance points	0-0	0-0
Fewer 2nd chance points	0-8	0-8
More fast break points	1-0	1-0
Has equal fast break points	0-3	0-3
Fewer fast break points	2-10	2-10

BUSY MASTODONS...

The Mastodons wrapped up a busy opening weekend as the team played three games in four days to begin the season. Fort Wayne was the only team in Division I to have played three games through the first four days of the season (Nov. 11-14).

MAKING THE ROUNDS...

Of the current 32 Division I basketball conferences, Fort Wayne has taken on at least one school, currently or when they played, in all but four of those leagues. The four remaining conferences the Mastodons have yet to play are: Colonial Athletic Association, Ivy League, Southwestern Athletic Conference, and West Coast Conference. Three other leagues (Big Sky Conference, Pacific 12 Conference, and Southland Conference) Fort Wayne played a current member while they were a part of another conference.

SEASON OPENERS...

The Fort Wayne women's basketball team has an all-time record of 16-25 in its season openers, after falling to Belmont on Nov. 11.

SUMMIT LEAGUE PRESEASON POLL...

Fort Wayne was picked to finish ninth in the Summit League preseason poll of the league's head coaches. The Mastodons received 80 points as coaches were not allowed to vote for their own teams.

South Dakota State was tabbed as the preseason favorite to win the 2016-17 Summit League Championship, receiving 30 first-place votes to finish atop the poll with 542 points.

2016-17 Summit League Preseason Poll

Place	Team	Points (1st)
1.	South Dakota State	542 (30)
2.	IUPUI	438
3.	South Dakota	393 (3)
4.	Oral Roberts	391 (1)
5.	Omaha	325
6.	Western Illinois	250
7.	North Dakota State	156
8.	Denver	150
9.	Fort Wayne	80

Preseason Player of the Year:

Macy Miller, South Dakota State

First Team

Name	School	Pos.	Year
Danielle Lawrence	IUPUI	G	Jr.
Macy Miller	South Dakota State	G	Jr.
Clarissa Ober	South Dakota State	C	Sr.
Mikale Rogers	IUPUI	C	Sr.
Mikaela Shaw	Omaha	F	Sr.
Ellie Thompson	South Dakota State	F	Jr.

Second Team

Name	School	Pos.	Year
Madison Guebert	South Dakota State	G	So.
Faith Ihim	Oral Roberts	F	Jr.
Kaylan Mayberry	Oral Roberts	G	Sr.
Taylor Thunstedt	North Dakota State	G	Jr.
Kerri Young	South Dakota State	G/F	Sr.

FORT WAYNE INDIVIDUAL GAME HIGHS

Points	22	Peyton Fallis at Butler (11/16/16)
Field Goals Made	7	De'Jour Young vs Western Illinois (12/28/16)
	7	De'Jour Young vs Eastern Kentucky (12/21/16)
	7	De'Jour Young at UIC (12/10/16)
	7	Peyton Fallis at Butler (11/16/16)
Field Goal Att.	18	De'Jour Young vs Western Illinois (12/28/16)
FG Pct (min 5 made)	.833 (5-6)	Rachel Rinehart at Kent State (11/30/16)
	.833 (5-6)	Lindley Kistler vs Defiance (11/12/16)
3-Point FG Made	4	Peyton Fallis at Butler (11/16/16)
3-Point FG Att.	10	Anna Lappenküper at South Dakota State (01/05/17)
3-PT FG Pct (min 2 made)	1.000 (2-2)	Zaria Atkins at Kent State (11/30/16)
	1.000 (2-2)	KeShyra McCarver vs Belmont (11/11/16)
Free Throws Made	9	Zaria Atkins vs Eastern Kentucky (12/21/16)
Free Throw Att.	11	Rachel Rinehart at UIC (12/10/16)
FT Pct (min 7 made)	1.000 (9-9)	Zaria Atkins vs Eastern Kentucky (12/21/16)
Rebounds	10	Rachel Rinehart at Illinois (12/02/16)
Assists	6	Rachel Rinehart vs Trine (11/14/16)
Steals	5	Rachel Rinehart vs Western Illinois (12/28/16)
Blocked Shots	3	Selena Lozada vs Western Illinois (12/28/16)

FORT WAYNE TEAM GAME HIGHS

POINTS	76	DEFIANCE (11/12/16)
FIELD GOALS MADE	30	DEFIANCE (11/12/16)
FIELD GOAL ATTEMPTS	66	at South Dakota State (01/05/17)
	66	BELMONT (11/11/16)
FIELD GOAL PERCENTAGE	.486 (18-37)	at Wright State (12/20/16)
3 PT FIELD GOALS MADE	6	at Butler (11/16/16)
	6	DEFIANCE (11/12/16)
3 PT FG ATTEMPTS	20	at South Dakota State (01/05/17)
	20	TRINE (11/14/16)
3 PT FG PERCENTAGE	.600 (6-10)	DEFIANCE (11/12/16)
FREE THROWS MADE	25	vs Eastern Kentucky (12/21/16)
FREE THROW ATTEMPTS	28	vs Eastern Kentucky (12/21/16)
FREE THROW PERCENTAGE	.944 (17-18)	at Oral Roberts (12/31/16)
REBOUNDS	40	DEFIANCE (11/12/16)
ASSISTS	17	DEFIANCE (11/12/16)
STEALS	12	OAKLAND (11/19/16)
BLOCKED SHOTS	4	WESTERN ILLINOIS (12/28/16)
	4	TRINE (11/14/16)
TURNOVERS	25	OAKLAND (11/19/16)
FOULS	31	at Kent State (11/30/16)

FORT WAYNE TEAM GAME LOWS

POINTS	33	at Illinois (12/02/16)
FIELD GOALS MADE	10	at Illinois (12/02/16)
FIELD GOAL ATTEMPTS	37	at Wright State (12/20/16)
FIELD GOAL PERCENTAGE	.232 (13-56)	at Western Michigan (12/06/16)
3 PT FIELD GOALS MADE	0	at Western Michigan (12/06/16)
3 PT FG ATTEMPTS	4	at Oral Roberts (12/31/16)
3 PT FG PERCENTAGE	.000 (0-13)	at Western Michigan (12/06/16)
FREE THROWS MADE	4	WESTERN ILLINOIS (12/28/16)
FREE THROW ATTEMPTS	5	WESTERN ILLINOIS (12/28/16)
FREE THROW PERCENTAGE	.588 (10-17)	DEFIANCE (11/12/16)
REBOUNDS	24	at Butler (11/16/16)
	24	WESTERN ILLINOIS (12/28/16)
ASSISTS	4	at Illinois (12/02/16)
	4	at Western Michigan (12/06/16)
	4	at Oral Roberts (12/31/16)
STEALS	2	BELMONT (11/11/16)
	2	at Wright State (12/20/16)
BLOCKED SHOTS	0	OAKLAND (11/19/16)
	0	vs Miami (Ohio) (12/19/16)
	0	vs Eastern Kentucky (12/21/16)
TURNOVERS	9	at South Dakota State (01/05/17)
FOULS	12	vs Eastern Kentucky (12/21/16)

OPPONENT INDIVIDUAL GAME HIGHS

Points	31	Kelsey Tietje vs Defiance (11/12/16)
Field Goals Made	13	Kelsey Tietje vs Defiance (11/12/16)
Field Goal Att.	22	Kelsey Tietje vs Defiance (11/12/16)
FG Pct (min 5 made)	1.000 (8-8)	Ellie Thompson at South Dakota State (01/05/17)
3-Point FG Made	6	Lakota Beatty at Oral Roberts (12/31/16)
3-Point FG Att.	8	Lakota Beatty at Oral Roberts (12/31/16)
	8	Taylor Higginbotham vs Western Illinois (12/28/16)
3-PT FG Pct (min 2 made)	1.000 (3-3)	Kaylan Mayberry at Oral Roberts (12/31/16)
Free Throws Made	7	Larissa Lurken at Kent State (11/30/16)
Free Throw Att.	11	Larissa Lurken at Kent State (11/30/16)
FT Pct (min 7 made)	.636 (7-11)	Larissa Lurken at Kent State (11/30/16)
Rebounds	14	Hannah Little vs Oakland (11/19/16)
Assists	11	Whitney Schalk vs Defiance (11/12/16)
Steals	6	Taylor Gleason vs Oakland (11/19/16)
Blocked Shots	5	Marley Hill at Western Michigan (12/06/16)
Turnovers	9	Larissa Lurken at Kent State (11/30/16)

OPPONENT TEAM GAME HIGHS

POINTS	85	BELMONT (11/11/16)
FIELD GOALS MADE	33	OAKLAND (11/19/16)
FIELD GOAL ATTEMPTS	63	BELMONT (11/11/16)
FIELD GOAL PERCENTAGE	.563 (27-48)	at South Dakota State (01/05/17)
3 PT FIELD GOALS MADE	10	at Oral Roberts (12/31/16)
	10	BELMONT (11/11/16)
3 PT FG ATTEMPTS	26	BELMONT (11/11/16)
3 PT FG PERCENTAGE	.714 (10-14)	at Oral Roberts (12/31/16)
FREE THROWS MADE	25	TRINE (11/14/16)
FREE THROW ATTEMPTS	35	TRINE (11/14/16)
FREE THROW PERCENTAGE	.900 (9-10)	at Wright State (12/20/16)
REBOUNDS	45	BELMONT (11/11/16)
ASSISTS	18	WESTERN ILLINOIS (12/28/16)
STEALS	15	OAKLAND (11/19/16)
BLOCKED SHOTS	8	at Western Michigan (12/06/16)
	8	OAKLAND (11/19/16)
TURNOVERS	21	at Kent State (11/30/16)
	21	OAKLAND (11/19/16)
FOULS	27	at UIC (12/10/16)

OPPONENT TEAM GAME LOWS

POINTS	55	at UIC (12/10/16)
FIELD GOALS MADE	20	at UIC (12/10/16)
FIELD GOAL ATTEMPTS	48	at Kent State (11/30/16)
	48	at South Dakota State (01/05/17)
FIELD GOAL PERCENTAGE	.367 (22-60)	at Illinois (12/02/16)
3 PT FIELD GOALS MADE	2	COASTAL CAROLINA (11/26/16)
	2	at South Dakota State (01/05/17)
3 PT FG ATTEMPTS	5	COASTAL CAROLINA (11/26/16)
3 PT FG PERCENTAGE	.231 (3-13)	vs Eastern Kentucky (12/21/16)
FREE THROWS MADE	5	at Illinois (12/02/16)
FREE THROW ATTEMPTS	9	WESTERN ILLINOIS (12/28/16)
FREE THROW PERCENTAGE	.500 (5-10)	at Illinois (12/02/16)
REBOUNDS	26	at Wright State (12/20/16)
ASSISTS	10	TRINE (11/14/16)
	10	at South Dakota State (01/05/17)
STEALS	3	at South Dakota State (01/05/17)
BLOCKED SHOTS	0	COASTAL CAROLINA (11/26/16)
TURNOVERS	8	at Illinois (12/02/16)
FOULS	11	BELMONT (11/11/16)

FORT WAYNE TEAM RECORDS (MIN. 20 GAMES)

Record	
MOST WINS.....	23 (1995-96)
MOST LOSSES.....	24 (1998-99)
MOST GAMES PLAYED.....	31 (2010-11)
Points	
GAME HIGH.....	117, vs Tri-State (12/3/88)
SEASON HIGH.....	2,431 (1989-90)
GAME LOW.....	28, Indiana State (12/28/02)
SEASON LOW.....	1,110 (1978-79)
Field Goals Made	
GAME HIGH.....	48, at Southern Indiana (2/7/91)
SEASON HIGH.....	901 (1989-90)
GAME LOW.....	11, Wichita State (11/8/2013)
	11, Winthrop (12/23/05)
SEASON LOW.....	443 (1978-79)
Field Goal Attempts	
GAME HIGH.....	92, at Purdue (11/21/04)
SEASON HIGH.....	1,864 (2007-08)
GAME LOW.....	38, Wichita State (11/8/13)
SEASON LOW.....	1,263 (1978-79)
Field Goal Percentage	
GAME HIGH.....	.720 (36-of-50), at IUPUI (1/23/92)
SEASON HIGH.....	.492 (877-1782), (1991-92)
GAME LOW.....	.163 (15-of-92), Purdue (11/21/04)
LOW SEASON.....	.331 (595-1798), (2004-05)
3-Point Field Goals Made	
GAME HIGH.....	18, at Missouri-St. Louis (2/15/01)
SEASON HIGH.....	271 (2013-14)
GAME LOW.....	0, Several times
SEASON LOW.....	13 (1992-93)

3-Point Field Goal Attempts	
GAME HIGH.....	48, vs Bowling Green (11/19/04)
	48, vs Grace (12/11/99)
SEASON HIGH.....	743 (2013-14)
GAME LOW.....	0, Several times
SEASON LOW.....	59 (1992-93)
3-Point Field Goal Percentage (min. 10 att.)	
GAME HIGH.....	.800 (8-of-10), at Cleveland State (1/26/04)
SEASON HIGH.....	.430 (89-207), (1989-90)
GAME LOW.....	.000 (0-of-10), St. Joseph's (1/3/91)
LOW SEASON.....	.220 (44-200), (1997-98)
Free Throws Made	
GAME HIGH.....	42, vs NKU (12/21/95)
SEASON HIGH.....	604 (1995-96)
GAME LOW.....	1, Indianapolis (2/20/97)
	1, Indianapolis (3/6/1993)
SEASON LOW.....	214 (1979-80)
Free Throw Attempts	
GAME HIGH.....	52, vs NKU (12/21/95)
	52, at Wayne State (11/16/90)
SEASON HIGH.....	821 (1991-92)
GAME LOW.....	2, Ashland (2/20/88)
SEASON LOW.....	382 (1982-83)
Free Throw Percentage (min. 10 made/20 att.)	
GAME HIGH.....	1.000 (24-of-24), vs Indiana (11/12/13)
SEASON HIGH.....	.794 (409-515), (2012-13)
GAME LOW.....	.433 (13-of-30), Kentucky (11/21/03)
SEASON LOW.....	.483 (224-464), (1978-79)

Rebounds	
GAME HIGH.....	65, vs Shippensburg (11/19/95)
SEASON HIGH.....	1,244 (1991-92)
GAME LOW.....	18, IUPUI (3/2/13)
SEASON LOW.....	132 (1978-79)
Assists	
GAME HIGH.....	31, at Southern Indiana (2/7/91)
SEASON HIGH.....	551 (1994-95)
GAME LOW.....	1, Wichita State (11/8/13)
	1, Hampton (11/29/86)
SEASON LOW.....	125 (1980-81)
Blocks	
GAME HIGH.....	11, vs Indiana Tech (11/23/10)
	11, vs Kalamazoo (12/2/05)
SEASON HIGH.....	119 (2009-10)
GAME LOW.....	0, Several times
SEASON LOW.....	18 (1986-87)
Steals	
GAME HIGH.....	25, vs Kalamazoo (12/2/05)
SEASON HIGH.....	315 (1990-91)
GAME LOW.....	0, St. Bonaventure (12/2/08)
	0, UMBC (12/20/05)
SEASON LOW.....	188 (2008-09)
Turnovers	
GAME HIGH.....	40, Hampton (12/4/87)
SEASON HIGH.....	655 (1989-99)
GAME LOW.....	5, North Dakota State (1/5/09)
SEASON LOW.....	184 (1980-81)

FORT WAYNE INDIVIDUAL QUARTER HIGHS

Points	13	De'Jour Young, 2nd, at UIC (12/10/16)
FG Made	5	De'Jour Young, 2nd, at UIC (12/10/16)
FG Att.	7 (4x)	MR - Selena Lozada, 4th, at Oral Roberts (12/31/16)
3-Pt FG Made	2 (5x)	MR - Zaria Atkins, 3rd, at Wright State (12/20/16)
3-P FG Att.	4	Anna Lappenüper, 3rd, at South Dakota State (1/5/17)
FT Made	6	De'Jour Young, 4th, vs Oakland (11/19/16)
FT Att.	8	De'Jour Young, 4th, vs Oakland (11/19/16)
Rebounds	5	De'Jour Young, 2nd, at UIC (12/10/16)
Offensive Rebounds	3 (4x)	MR - KeShyra McCarver, 4th, at South Dakota State (1/5/17)
Defensive Rebounds	5	De'Jour Young, 2nd, at UIC (12/10/16)
Fouls	3 (9x)	MR - KeShyra McCarver, 3rd, at South Dakota State (1/5/17)
Assists	3 (6x)	MR - De'Jour Young, 1st, at South Dakota State (1/5/17)
Blocked Shots	2 (3x)	MR - Selena Lozada, 2nd, vs Western Illinois (12/28/16)
Steals	4	Rachel Rinehart, 4th, at South Dakota State (1/5/17)

FORT WAYNE TEAM QUARTER HIGHS

Points	25	3rd, vs Defiance (11/12/16)
1st Quarter Points	21	vs Oakland (11/19/16)
2nd Quarter Points	21	at UIC (12/10/16)
3rd Quarter Points	25	vs Defiance (11/12/16)
4th Quarter Points	23	vs Belmont (11/11/16)
Fewest Points	5 (2x)	MR - 1st, at Illinois (12/2/16)
FG Made	10	3rd, vs Defiance (11/12/16)
FG Att.	21	4th, at South Dakota State (1/5/17)
Highest FG Pct.	.667 (6-9)	3rd, at Wright State (12/20/16)
Lowest FG Pct.	.083 (1-12)	1st, at Kent State (11/30/16)
3-Pt FG Made	3 (4x)	MR - 2nd, vs. Western Illinois (12/28/16)
3-Pt FG Att.	8 (2x)	MR - 3rd, at South Dakota State (1/5/17)
3-Pt FG Pct. (2 made)	1.000 (2-2)	2nd, vs Defiance (11/12/16)
FT Made	13	4th, vs. Eastern Kentucky (12/21/16)
FT Att.	15	4th, vs. Eastern Kentucky (12/21/16)
FT Pct (5 made)	1.000 (9-9)	4th, vs Trine (11/14/16)
Rebounds	14	1st, at Western Michigan (12/6/16)
Offensive Rebounds	8 (2x)	MR - 4th, at South Dakota State (1/5/17)
Defensive Rebounds	10	2nd, at UIC (12/10/16)
Fouls	11	3rd, vs Coastal Carolina (11/26/16)
Assists	6 (2x)	2nd, at UIC (12/10/16)
Turnovers	10	2nd, vs Oakland, (11/19/16)
Blocked Shots	3	2nd, vs Trine (11/14/16)
Steals	6	4th, at South Dakota State (1/5/17)

OPPONENT INDIVIDUAL QUARTER HIGHS

Points	16	Larissa Lurken, 1st, at Kent State (11/30/16)
FG Made	6 (2x)	MR - Larissa Lurken, 1st, at Kent State (11/30/16)
FG Att.	8 (3x)	MR - Larissa Lurken, 1st, at Kent State (11/30/16)
3-Pt FG Made	2 (15x)	MR - Lakota Beatty, 4th, at Oral Roberts (12/31/16)
3-P FG Att.	4 (3x)	MR - Taylor Higginbotham, 3rd, vs Western Illinois (12/28/16)
FT Made	4 (6x)	MR - Madison Guebert, 3rd, at South Dakota State (1/5/17)
FT Att.	6	Ced Gibson, 4th, vs Costal Carolina (11/26/16)
Rebounds	7	Hannah Little, 4th, vs Oakland (11/19/16)
Offensive Rebounds	3 (6x)	MR - Lexi Smith, 3rd, at Wright State (12/20/16)
Defensive Rebounds	4 (3x)	MR - Tiffaney Flaata, 4th, at South Dakota State (1/5/17)
Fouls	3 (3x)	MR - Jalen O'Bannon, 4th, vs Eastern Kentucky (12/21/16)
Assists	4 (4x)	MR - Lauren Dickerson, 1st, vs Miami (Ohio), 12/19/16)
Blocked Shots	3	Hannah Little, 1st, vs Oakland (11/19/16)
Steals	3 (2x)	MR - Taylor Gleason, 3rd, vs Oakland (11/19/16)

OPPONENT TEAM QUARTER HIGHS

Points	30	4th, vs Oakland (11/19/16)
1st Quarter Points	29	vs. Miami (Ohio), 12/19/16)
2nd Quarter Points	21	vs Belmont (11/11/16)
3rd Quarter Points	25	vs Belmont (11/11/16)
4th Quarter Points	30	vs Oakland (11/19/16)
Fewest Points	5	at Butler (11/16/16)
FG Made	12 (2x)	MR - 1st, at Oral Roberts (12/31/16)
FG Att.	20	1st, vs Coastal Carolina (11/26/16)
Highest FG Pct.	.800 (12-15)	1st, at Oral Roberts (12/31/16)
Lowest FG Pct.	.154 (2-13) (2x)	MR - 1st, at Western Michigan (12/6/16)
3-Pt FG Made	4 (4x)	MR - 3rd, at Oral Roberts (12/31/16)
3-Pt FG Att.	10	4th, vs Belmont (11/11/16)
3-Pt FG Pct. (2 made)	1.000 (2-2)	4th, at Wright State (12/20/16)
FT Made	8 (3x)	MR - 3rd, at South Dakota State (1/5/17)
FT Att.	13 (2x)	Mr - 3rd, vs Coastal Carolina (11/26/16)
FT Pct (5 made)	1.000 (8-8)	3rd, at South Dakota State (1/5/17)
Rebounds	18	1st, vs Belmont (11/11/16)
Offensive Rebounds	7	2nd, at Kent State (11/30/16)
Defensive Rebounds	13	1st, vs Belmont (11/11/16)
Fouls	12	4th, vs. Eastern Kentucky (12/21/16)
Assists	7	3rd, vs. Western Illinois (12/28/16)
Turnovers	7 (6x)	MR - 4th, at South Dakota State (1/5/17)
Blocked Shots	4	1st, vs Oakland (11/19/16)
Steals	6 (3x)	MR - 3rd, vs Oakland (11/19/16)

FORT WAYNE INDIVIDUAL RECORDS

Points	
GAME	43, Lindy Jones at St. Joseph's (1/27/96)
.....	43, Amanda Hyde at Southern Illinois (11/29/12)
SEASON	752, Lisa Miller (1991-92)
CAREER	2358, Lisa Miller (1988-92)

Scoring Average	
SEASON	26.0, Lindy Jones (1995-96)
CAREER	21.2, Lisa Miller (1988-92)

Field Goals Made	
GAME	18, Lindy Jones at St. Joseph's (1/27/96)
SEASON	243, Lisa Miller (1991-92)
CAREER	808, Lisa Miller (1988-92)

Field Goals Attempted	
GAME	30, Lindy Jones at St. Joseph's (1/27/96)
SEASON	537, Johnna Lewis-Carlisle (2007-08)
CAREER	1658, Johnna Lewis-Carlisle (2004-08)

Field Goal Percentage (min. 10 att.)	
GAME909 (10-of-11), Stephanie Rosado at Centenary (12/31/10)
SEASON578 (170-294), Rhonda Unverferth (1984-85)
CAREER561 (216-385), Amy Neuhouser (1988-90)

3-Point Field Goals Made	
GAME	9, Jamie Holderman vs SIUE (2/1/01)
.....	9, Jamie Holderman at Bellarmine (1/13/00)
SEASON96, Anne Boese (2009-10)
CAREER301, Anne Boese (2008-12)

3-Point Field Goals Attempted	
GAME	17, Anne Boese at Oral Roberts (12/29/10)
.....	17, Jordan Zuppe vs Toledo (11/29/08)
.....	17, Jamie Holderman at Missouri-St. Louis (2/15/01)
SEASON96, Anne Boese, (2009-10)
CAREER768, Anne Boese, (2008-12)

3-Point Field Goal Percentage (min. 5 att.)	
GAME	1.000 (6-of-6), Hilary O'Connell vs UMBC (12/20/05)
SEASON461 (41-89), Trish Fleming (2000-01)
CAREER413 (229-555), Haley Seibert (2011-15)

Free Throws Made	
GAME	22, Ashley Johnson vs North Dakota State (2/26/06)
SEASON	266, Lisa Miller, (1991-92)
CAREER	741, Lisa Miller, (1988-92)

Free Throw Attempts	
GAME	24, Lisa Miller at Wayne State (11/16/90)
SEASON	336, Lisa Miller, (1991-92)
CAREER	922, Lisa Miller, (1988-92)

Free Throw Percentage (min. 9 att.)	
GAME	1.000 (14-of-14) Haley Seibert vs NKU (12/6/14)
.....	1.000 (14-of-14) Amanda Hyde vs Indiana (11/12/13)
.....	1.000 (14-of-14) Amanda Hyde vs Purdue (12/6/12)
.....	1.000 (14-of-14) Lisa Miller vs St. Joseph's (1/2/92)
.....	1.000 (14-of-14) Lisa Miller vs Tri-State (12/3/88)
SEASON914 (127-139), Haley Seibert (2014-15)
CAREER868 (315-363), Haley Seibert (2011-15)

Rebounds.....	
GAME	23, Vereea Bibbs vs UALR (11/28/03)
SEASON	280, Pam Edwards, (1991-92)
CAREER	937, Lisa Miller, (1988-92)

Rebound Average	
SEASON	10.9, Ann McCleneghen (1979-80)
CAREER	8.4, Lisa Miller (1988-92)

Assists	
GAME	15, Wendy Recker vs Southern Indiana (1/28/95)
SEASON	197, Wendy Recker, (1994-95)
CAREER	419, Wendy Recker, (1993-96)

Assists Average	
SEASON	7.3, Wendy Recker (1994-95)
CAREER	5.1, Wendy Recker (1993-96)

Blocks	
GAME	8, Stephanie Rosado Indiana Tech (11/23/10)
SEASON	47, Stephanie Rosado, (2010-11)
CAREER	130, Jennie Newhard, (1992-96)

Blocks Average	
SEASON	1.6, Jennie Newhard (1993-94)
.....	1.6, Shalauna McMillan (1996-97)
CAREER	1.3, Jennie Newhard (1992-96)

Steals	
GAME	10, Kayla Drake at South Dakota State (1/22/11)
SEASON	80, Sue Hendricks, (1980-81)
CAREER	249, Lindy Jones, (1992-96)

Steals Average	
SEASON	3.5, Sue Hendricks (1980-81)
CAREER	2.8, Laure Renninger (1982-84)

Games Played	
SEASON	31, Amanda Hyde (2010-11)
.....	31, Stephanie Rosado (2010-11)
.....	31, Erin Murphy (2010-11)
.....	31, Anne Boese (2010-11)
.....	31, Jordan Zuppe (2010-11)
CAREER	121, Jordan Zuppe (2007-11)

Games Started	
SEASON	31, Anne Boese (2010-11)
.....	31, Stephanie Rosado (2010-11)
.....	31, Jordan Zuppe (2010-11)
CAREER	118, Jordan Zuppe (2007-11)

THE LAST TIME FORT WAYNE...

IN THE RANKINGS

Was Ranked No. 18, 3/7/1996
Played a Ranked (AP) Team at No. 23 West Virginia, 12/13/2014 (L, 82-48)
Defeated a Ranked (AP) Team at No. 21 Michigan State, 12/1/2013 (W, 81-76)

CONSECUTIVE GAME STREAKS

Won 5+ Consecutive Games Dec. 31, 2010 - Jan. 24, 2011 (6 straight)
Won 10+ Consecutive Games Nov. 18, 1995 - Jan. 13, 1996 (14 straight)
Lost 5+ Consecutive Games Nov. 14, 2016 - Dec. 6, 2016 (7 straight)
Lost 10+ Consecutive Games Dec. 20, 2015 - Jan. 28, 2016 (11 straight)

SCORING

Scored 20-24 points De'Jour Young (21), vs. Oakland, 11/19/2016
Scored 25-29 points Josie Fisher (28), at Western Illinois, 2/4/2016
Scored 30-39 points Kamilah Carter (30), vs. North Dakota State, 2/27/2016
Scored ≥ 40 points Amanda Hyde (41), at SIUE, 11/26/2013
Freshman Scored 25+ points Josie Fisher (28), at Western Illinois, 2/4/2016
Came off the bench to score 20 Peyton Fallis (22), at Butler, 11/16/2016
Consecutive 25 point games Amanda Hyde, (28), vs. Denver, 3/9/2014; (25), at UIC, 3/19/2014
Two players scored 20 points at Western Illinois, 2/4/2016
..... Josie Fisher (28) and Kamilah Carter (22)
Three players scored 20 points vs. Omaha, 3/1/2014
..... Haley Seibert (23), Ariana Simmons (22), Amanda Hyde (20)

None in double figures at Western Michigan, 12/6/2016
One in double figures De'Jour Young (11), at Illinois, 12/2/2016
Two in double figures at South Dakota State, 1/5/2017
..... Rachel Rinehart (13) and Anna Lappenküper (12)

Three in double figures at Oral Roberts, 12/31/2016
..... Zaria Atkins (13), Selena Lozada (12) and Anna Lappenküper (11)
Four in double figures vs. Eastern Kentucky, 12/21/2016
..... De'Jour Young (19), Zaria Atkins (18), Rachel Rinehart (13) and KeShyra McCarver (10)

Five in double figures at Michigan State, 12/1/2013; Amanda Hyde (23),
..... Haley Seibert (14), Rachel Mauk (14), Ariana Simmons (12), and Mur Hagerman (10)
Six in double figures vs. Trine, 12/30/2014; Keanna Gary (23), Kamilah Carter (20),
..... Haley Seibert (12), Allyson Bunch (11), Courtney Ogle (10), and Brett Green (10)

Scored ≥ 25 points/quarter 25, 3rd quarter, vs. Defiance, 11/12/2016
Scored ≥ 50 points/half 50, 1st half, vs. Grace, 11/16/2015
Scored ≥ 100 points 101, vs. Indiana Tech, 12/11/2013
Scored ≥ 100 points/road game 112, at Indiana-South Bend, 1/9/2002
Scored ≥ 100 points/neutral site 106, vs. Western Illinois, 3/10/2013 (@ Souix Falls, S.D.)
Scored < 10 points/quarter 6, 4th quarter, at South Dakota State, 1/5/2017
Scored ≤ 15 points/quarter 14, 3rd quarter, at South Dakota State, 1/5/2017
Scored ≤ 20 points/half 20, 2nd half, at South Dakota State, 1/5/2017
Scored ≤ 30 points/half 25, 2nd half, vs. Western Illinois, 12/28/2016
Scored ≤ 50 points/game 47, vs. Miami (Ohio), 12/19/2016

FIELD GOAL SHOOTING

Shot ≥ 60%/quarter636 (7-of-11), 2nd quarter, vs. Western Illinois, 12/28/2016
Shot ≥ 70%/quarter —
Shot ≥ 60%/half 600 (12-of-20), 2nd half, at South Dakota State, 2/8/2015
Shot ≥ 70%/half741 (20-of-27), 2nd half, vs. Indiana Tech, 12/11/2013
Shot ≥ 60%/game625 (30-of-48), vs. Western Illinois, 2/21/2009
Shot ≥ 70%/game720 (36-of-50), vs. IUPUI, 1/23/1992
Shot ≤ 20%/quarter095 (2-of-21), 4th quarter, at South Dakota State, 1/5/2017
Shot ≤ 20%/half185 (5-27), 1st half, at Western Michigan, 12/6/2016
Shot ≤ 30%/quarter273 (3-of-11), 1st quarter, at UIC, 12/10/2016
Shot ≤ 30%/half206 (7-of-34), 2nd half, at South Dakota State, 1/5/2017
Shot ≤ 30%/game288 (19-of-66), at South Dakota State, 1/5/2017
Shot ≤ 40%/game and won377 (23-of-61), vs. Denver, 1/30/2016
Shot ≤ 30%/game and won288 (15-of-52), vs. Oral Roberts, 2/17/2016

THREE-POINTERS

Made 6 Kamilah Carter (6), vs. South Dakota, 2/25/2016
Made 7 Haley Seibert (7), at Omaha, 1/30/2014
Made 8 Anne Boese (8), vs. Butler, 11/20/2011
Player Made 9 Jamie Holderman (9), vs. SIU-Edwardsville, 2/1/2001
Attempted ≥ 10 Anna Lappenküper (10), at South Dakota State, 1/5/2017
Attempted ≥ 15 Anne Boese (17), at Oral Roberts, 12/29/2010
Fort Wayne Made ≥ 15 16, at Chicago State, 12/4/2014
Fort Wayne Did not make a three-pointer at Western Michigan, 12/6/2016
Fort Wayne Attempted ≥ 30 30, at South Dakota State, 2/13/2016
Fort Wayne Attempted ≥ 44 48, vs. Bowling Green, 11/19/2004
Fort Wayne Shot 60% (min. 10 att.) 600 (6-of-10), vs. Defiance, 11/12/2016

FREE THROWS

Made 10-of-10 or better 10-10, Josie Fisher, vs. North Dakota State, 2/27/2016
Fort Wayne Shot 90% (min. 10 atts)944 (17-of-18), at Oral Roberts, 12/31/16
Fort Wayne Shot ≤ 50%222 (2-of-9), at Omaha, 2/11/2016
Fort Wayne Made ≥ 40 40 (attempted 48) vs. Southern Indiana, 2/6/1992
Fort Wayne Made ≤ 5 FTs 4 (attempted 5), vs. Western Illinois, 12/28/2016
Fort Wayne Attempted ≥ 50 FTs 52 (made 42), vs. Northern Kentucky, 12/21/1995
Fort Wayne Attempted ≤ 5 FTs 5 (made 4), vs. Western Illinois, 12/28/2016

REBOUNDS

Had ≥ 10 rebounds Rachel Rinehart (10), at Illinois, 12/2/2016
Two Players Had ≥ 10 rebounds vs. USC Upstate, 11/21/2015
..... Courtney Ogle (10) and De'Jour Young (10)
Three Players Had ≥ 10 rebounds at Saint Joseph's (IN), 2/9/1999
..... Angie Womack (12), Katie Bruening (12), and Laura Douglas (10)
Had ≥ 15 rebounds Keanna Gary (16), at Denver, 1/9/2016
Had ≥ 20 rebounds Verea Bibbs (23), vs. UALR, 11/28/2003
Had 10 rebounds in consecutive games Keanna Gary
..... (16), at Denver, 1/9/2016 and (11) vs. South Dakota State, 1/13/2016
Had 10 rebounds in three consecutive games Keanna Gary
..... (16) vs. Western Illinois, 1/7/2016; (16), at Denver, 1/9/2016; and (11) vs. South Dakota State, 1/13/2016
Had 10 rebounds in four consecutive games Keanna Gary
..... (10), vs. IUPUI, 1/1/2016; (16), vs. Western Illinois, 1/7/2016;
..... (16), at Denver, 1/9/2016; and (11) vs. South Dakota State, 1/13/2016
Had 10 rebounds in five consecutive games Lisa Miller
..... (13) at Kentucky Wesleyan, 2/18/1989; (10) vs. Northern Kentucky, 2/23/1989;
..... (13) vs. Ashland, 2/25/1989; (16) vs. Wayne State, 2/28/1989; and (12) vs. Taylor, 11/17/1989
Fort Wayne had ≥ 60 rebounds vs. Shippensburg (65), 11/19/1995

DOUBLE-DOUBLES

Last Player Keanna Gary (16 pts/10 rbs), vs. Omaha, 1/28/2016
Points & Rebounds Keanna Gary (16 pts/10 rbs), vs. Omaha, 1/28/2016
Points & Assists Maggie Bruening (12 pts/10 ast), vs. Morehead State, 1/5/2004
Points & Steals Kayla Drake (27 pts/10 stl), at South Dakota State, 1/22/2011
Rebounds & Assists Lindsay Wertz (10 rbs/10 ast), at Quincy, 2/17/2001
Double-double in consecutive games Keanna Gary
..... (10 pts/10 rbs), vs. IUPUI, 1/1/2016; (10 pts/16 rbs), vs. Western Illinois, 1/7/2016
Double-double in three consecutive games Stephanie Rosado
..... (14 pts/10 rbs), vs. Akron, 11/15/2010; (22 pts/12 rbs), at Youngstown State, 11/20/2010;
..... (31 pts/13 rbs), vs. Indiana Tech, 11/23/2010
Double-double in four consecutive games Sarah Turner
..... (16 pts/11 rbs), vs. Ashland, 1/4/1988; (22 pts/13 rbs), vs. Lewis, 1/9/1988;
..... (15 pts/10 rbs), vs. Huntington 1/16/1988; (17 pts/10 rbs), vs. Kentucky Wesleyan, 1/21/1988
Two players had double-doubles at North Dakota State, 1/9/2014
..... Amanda Hyde (35 pts/10 rbs) and Stefanie Mauk (12 pts/10 rbs)
Three players had double-doubles vs. Taylor, 11/17/1989 (@ Huntington, Ind.)
..... Lisa Miller (20 pts/12 rbs), Robin Scott (14 pts/10 rbs), and Pam Edwards (11 pts/11 rbs)
30 points and 10 rebounds Amanda Hyde (35 pts/10 rbs), at North Dakota State, 1/9/2014
20 points and 15 rebounds Stefanie Mauk (20 pts/15 rbs), vs. Rochester, 12/22/2012
30 points and 15 rebounds Pam Edwards (31 pts/18 rbs), vs. Ashland, 1/25/1992

ASSISTS

Had ≥ 8 assists Rachel Rinehart (8), vs. Western Illinois, 1/2/2015
Had ≥ 9 assists Amanda Hyde (9), at Detroit, 12/21/2013
Had ≥ 10 assists Jordan Zuppe (11), vs. Oral Roberts, 1/29/2011
Had ≥ 15 assists Wendy Recker (15), vs. Southern Indiana, 1/28/1995
Had 10 assists in consecutive games Maggie Bruening
..... (10), vs. Morehead State, 1/5/2004; (10), vs. Air Force, 1/17/2004
Fort Wayne had 20-24 assists 20, vs. Kent State, 11/19/2015
Fort Wayne had 25-29 assists 28, vs. Kalamazoo, 12/2/2005
Fort Wayne had ≥ 30 assists 31, vs. Southern Indiana, 2/7/1991

Fort Wayne had < 10 assists 6, at Wright State, 12/20/2016
Fort Wayne had ≤ 5 assists 4, at Oral Roberts, 12/31/2016

BLOCKED SHOTS

Blocked 5-6 shots Ariana Simmons (5), vs. Ball State, 12/29/2013
Blocked ≥ 7 shots Stephanie Rosado (8), vs. Indiana Tech, 11/23/2010
Fort Wayne blocked ≥ 10 shots 11, vs. Indiana Tech, 11/23/2010

STEALS

Had 5 steals Rachel Rinehart vs. Western Illinois, 12/28/2016
Had 6 steals Rachel Rinehart at Milwaukee, 12/28/2015
Had 7 steals Haley Seibert at North Dakota State, 1/17/2015
Had ≥ 8 steals Kayla Drake (10), at South Dakota State, 1/22/2011
Two Players Had ≥ 5 steals at Milwaukee, 12/28/2015
..... Rachel Rinehart (6) and Josie Fisher (5)
Had 5 steals in consecutive games Kayla Drake
..... (10), at South Dakota State, 1/22/2011; (6), at North Dakota State, 1/24/2011
Fort Wayne had ≥ 20 steals 21, at Milwaukee, 12/28/2015

TURNOVERS

Committed ≥ 20 turnovers 22, vs. Western Illinois, 12/28/2016
Committed ≥ 25 turnovers 25, vs. Oakland, 11/19/2016
Committed ≤ 5 turnovers 5, at Western Illinois, 2/4/2016
Committed < 10 turnovers 9, at South Dakota State, 1/5/2017

OVERTIME

Played an OT game at Denver (L, 53-50), 1/9/2016
Played multiple overtimes at North Dakota State (W, 98-89, 2ot), 1/9/2014
Won an OT game at North Dakota State (W, 98-89, 2ot), 1/9/2014
Won in multiple overtimes at North Dakota State (W, 98-89, 2ot), 1/9/2014
Won an OT game at home vs. UMKC (W, 82-76), 12/3/2011
Won an OT game at neutral site vs. Western Illinois (W, 106-101, 2ot), 3/10/2013
Won an OT game on the road at North Dakota State (W, 98-89, 2ot), 1/9/2014
Lost an OT game at Denver (L, 53-50), 1/9/2016
Lost in multiple overtimes at Hampton (L, 78-77, 2ot), 12/19/2010
Lost an OT game at home vs. Detroit (L, 81-74), 12/2/2014
Lost an OT game on the road at Denver (L, 53-50), 1/9/2016



1

YULESKA RAMIREZ-TEJEDA

Freshman | 5-7
Cambridge, Mass.
Cambridge Rindge and Latin

GUARD

SEASON HIGH	CATEGORY	CAREER HIGH
21, at Oral Roberts, 12/31/2016	Minutes	21, at Oral Roberts, 12/31/2016
7, vs Defiance, 11/12/2016	Points	7, vs Defiance, 11/12/2016
4, four times	Rebounds	4, four times
1, vs Belmont, 11/11/2016	Assists	1, vs Belmont, 11/11/2016
1, two times	Steals	1, two times
	Blocks	
3, two times	FG Made	3, two times
7, at South Dakota State, 1/5/2017	FG Attempts	7, at South Dakota State, 1/5/2017
	3-PT Made	
	3-PT Attempts	
2, two times	FT Made	2, two times
2, two times	FT Attempts	2, two times

SEASON STATS

Opponent	Date	gs	min	Total		3-Pointers		Free throws		Rebounds				pf	a	t/o	blk	stl	pts	avg
				fg-fga	pct	3fg-fga	pct	ft-fta	pct	off	def	tot	avg							
BELMONT	11/11/16	17		0-4	.000	0-0	.000	2-2	1.000	1	3	4	4.0	3	1	1	0	0	2	2.0
DEFIANCE	11/12/16	11		3-5	.600	0-0	.000	1-1	1.000	1	0	1	2.5	1	0	0	0	0	7	4.5
TRINE	11/14/16	6		0-0	.000	0-0	.000	2-2	1.000	0	2	2	2.3	3	0	0	0	0	2	3.7
at Butler	11/16/16	10		3-4	.750	0-0	.000	0-0	.000	0	1	1	2.0	2	0	1	0	1	6	4.3
OAKLAND	11/19/16	11		0-4	.000	0-0	.000	0-0	.000	0	1	1	1.8	0	0	0	0	0	0	3.4
COASTAL CAROLINA	11/26/16	5		0-2	.000	0-0	.000	0-0	.000	0	0	0	1.5	0	0	1	0	1	0	2.8
at Kent State	11/30/16	9		0-0	.000	0-0	.000	0-0	.000	1	3	4	1.9	1	0	1	0	0	0	2.4
at Illinois	12/02/16	4		0-0	.000	0-0	.000	0-0	.000	0	2	2	1.9	0	0	1	0	0	0	2.1
at Western Michigan	12/06/16	1		0-0	.000	0-0	.000	0-0	.000	0	0	0	1.7	0	0	1	0	0	0	1.9
at UIC	12/10/16	dnp		-	-	-	-	-	-	-	-	-	-	-	-	-	-	-	-	-
vs Miami (Ohio)	12/19/16	11		0-3	.000	0-0	.000	0-0	.000	2	0	2	1.7	1	0	0	0	0	0	1.7
at Wright State	12/20/16	dnp		-	-	-	-	-	-	-	-	-	-	-	-	-	-	-	-	-
vs Eastern Kentucky	12/21/16	2		0-0	.000	0-0	.000	0-0	.000	0	0	0	1.5	0	0	0	0	0	0	1.5
WESTERN ILLINOIS	12/28/16	4		0-0	.000	0-0	.000	0-0	.000	0	0	0	1.4	1	0	0	0	0	0	1.4
at Oral Roberts	12/31/16	21		1-2	.500	0-0	.000	0-0	.000	1	3	4	1.6	0	0	1	0	0	2	1.5
at South Dakota State	01/05/17	18		2-7	.286	0-0	.000	0-0	.000	2	2	4	1.8	0	0	2	0	0	4	1.6
Totals		0	130	9-31	.290	0-0	.000	5-5	1.000	8	17	25	1.8	12	1	9	0	2	23	1.6

Games played: 14
Minutes/game: 9.3
Points/game: 1.6
FG Pct: 29.0
FT Pct: 100.0

Rebounds/game: 1.8
Assists/game: 0.1
Turnovers/game: 0.6
Assist/turnover ratio: 0.1
Steals/game: 0.1

CAREER STATS

			Total		3-Point		F-Throws		Rebounds											Scoring	
Season	gp-gs	min/avg	fg-fga	pct	fg-fga	pct	ft-fga	pct	off	def	tot	avg	pf	fo	ast	to	blk	stl	pts	avg	
2016-17	14-0	130/9.3	9-31	.290	0-0	.000	5-5	1.000	8	17	25	1.8	12	0	1	9	0	2	23	1.6	
TOTAL	14-0	130/9.3	9-31	.290	0-0	.000	5-5	1.000	8	17	25	1.8	12	0	1	9	0	2	23	1.6	



SEASON HIGH	CATEGORY	CAREER HIGH
39, vs Eastern Kentucky, 12/21/2016	Minutes	39, vs Eastern Kentucky, 12/21/2016
12, two times	Points	22, at Illinois, 11/14/2014
8, vs Defiance, 11/12/2016	Rebounds	14, at Illinois, 11/14/2014
2, at UIC, 12/10/2016	Assists	4, at Western Illinois, 1/31/2015
3, vs Defiance, 11/12/2016	Steals	3, four times
1, two times	Blocks	2, at Omaha, 2/11/2016
5, two times	FG Made	7, vs. USC Upstate, 11/21/2015
11, vs Belmont, 11/11/2016	FG Attempts	11, two times
2, two times	3-PT Made	4, vs. Grace, 11/18/2014
4, at UIC, 12/10/2016	3-PT Attempts	7, at Detroit, 12/9/2015
6, vs Eastern Kentucky, 12/21/2016	FT Made	11, at Illinois, 11/14/2014
6, vs Eastern Kentucky, 12/21/2016	FT Attempts	12, at Illinois, 11/14/2014

• Summit League Player of the Week (11/17/2014)

CAREER VS. NORTH DAKOTA STATE

Season	gp-gs	min/avg	Total fg-fga	pct	3-Point fg-fga	pct	F-Throws ft-fga	pct	Rebounds off	def	tot	avg	pf	fo	ast	to	blk	stl	pts	avg
2014-15	2-0	42/21.0	3-8	.375	1-2	.500	5-8	.625	4	6	10	5.0	6	0	1	1	1	1	12	6.0
2015-16	2-0	44/22.0	2-6	.333	0-2	.000	2-2	1.000	2	5	7	3.5	7	0	1	0	0	0	6	3.0
TOTAL	4-0	86/21.5	5-14	.357	1-4	.250	7-10	.700	6	11	17	4.3	13	0	2	1	1	1	18	4.5

SINGLE-GAME HIGHS [all-time ranking]:

Points: 6, at North Dakota State -- 01/17/15; North Dakota State -- 02/21/15
 Rebounds: 6, at North Dakota State -- 01/17/15
 Assists: 1, at North Dakota State -- 01/17/15; North Dakota State -- 02/27/16
 Steals: 1, at North Dakota State -- 01/17/15
 Blocks: 1, North Dakota State -- 02/21/15
 FG made: 2, at North Dakota State -- 01/17/15

FG attempts: 5, at North Dakota State -- 01/17/15
 3FG made: 1, North Dakota State -- 02/21/15
 3FG attempts: 2, at North Dakota State -- 01/23/16
 FT made: 3, North Dakota State -- 02/21/15
 FT attempts: 4, at North Dakota State -- 01/17/15; North Dakota State -- 02/21/15

SEASON STATS

Opponent	Date	gs	min	Total		3-Pointers		Free throws		Rebounds				pf	a	t/o	blk	stl	pts	avg
				fg-fga	pct	3fg-fga	pct	ft-fa	pct	off	def	tot	avg							
BELMONT	11/11/16		23	5-11	.455	2-2	1.000	0-0	.000	0	4	4	4.0	4	1	0	0	0	12	12.0
DEFIANCE	11/12/16	*	26	3-7	.429	2-3	.667	0-0	.000	2	6	8	6.0	2	1	1	1	3	8	10.0
TRINE	11/14/16	*	19	1-6	.167	1-3	.333	0-0	.000	2	2	4	5.3	5	0	0	0	0	3	7.7
at Butler	11/16/16	*	22	0-5	.000	0-1	.000	2-2	1.000	1	2	3	4.8	4	1	0	0	0	2	6.3
OAKLAND	11/19/16	*	17	1-4	.250	0-0	.000	0-0	.000	0	2	2	4.2	3	1	1	0	2	2	5.4
COASTAL CAROLINA	11/26/16	*	19	5-9	.556	1-2	.500	1-2	.500	0	1	1	3.7	2	1	2	0	1	12	6.5
at Kent State	11/30/16	*	23	1-7	.143	0-2	.000	0-0	.000	0	1	1	3.3	3	0	2	0	2	2	5.9
at Illinois	12/02/16	*	30	2-5	.400	1-2	.500	1-1	1.000	4	2	6	3.6	3	1	1	0	1	6	5.9
at Western Michigan	12/06/16	*	18	1-3	.333	0-1	.000	0-0	.000	1	2	3	3.6	4	0	1	1	0	2	5.4
at UIC	12/10/16	*	26	3-6	.500	1-4	.250	0-1	.000	2	5	7	3.9	2	2	2	0	0	7	5.6
vs Miami (Ohio)	12/19/16	*	32	4-9	.444	0-3	.000	3-4	.750	3	1	4	3.9	3	0	1	0	2	11	6.1
at Wright State	12/20/16	*	34	2-5	.400	0-0	.000	3-4	.750	0	5	5	4.0	4	0	3	0	0	7	6.2
vs Eastern Kentucky	12/21/16	*	39	2-9	.222	0-2	.000	6-6	1.000	2	2	4	4.0	2	1	3	0	1	10	6.5
WESTERN ILLINOIS	12/28/16	*	19	3-6	.500	1-2	.500	1-2	.500	2	4	6	4.1	3	1	2	0	1	8	6.6
at Oral Roberts	12/31/16	*	29	1-7	.143	0-1	.000	4-4	1.000	2	3	5	4.2	1	1	1	0	0	6	6.5
at South Dakota State	01/05/17	*	24	3-9	.333	0-1	.000	3-5	.600	4	2	6	4.3	5	1	0	0	1	9	6.7
Totals		15	400	37-108	.343	9-29	.310	24-31	.774	25	44	69	4.3	50	12	20	2	14	107	6.7

Games played: 16
 Minutes/game: 25.0
 Points/game: 6.7
 FG Pct: 34.3
 3FG Pct: 31.0
 FT Pct: 77.4

Rebounds/game: 4.3
 Assists/game: 0.8
 Turnovers/game: 1.3
 Assist/turnover ratio: 0.6
 Steals/game: 0.9
 Blocks/game: 0.1

CAREER STATS

Season	gp-gs	min/avg	Total fg-fga	pct	3-Point fg-fga	pct	F-Throws ft-fga	pct	Rebounds off	def	tot	avg	pf	fo	ast	to	blk	stl	pts	avg
2014-15	30-4	503/16.8	41-129	.318	19-62	.306	45-65	.692	27	75	102	3.4	97	4	29	52	4	12	146	4.9
2015-16	29-19	568/19.6	47-142	.331	21-66	.318	34-46	.739	21	63	84	2.9	84	4	22	36	3	21	149	5.1
2016-17	16-15	400/25.0	37-108	.343	9-29	.310	24-31	.774	25	44	69	4.3	50	2	12	20	2	14	107	6.7
TOTAL	75-38	1471/19.6	125-379	.330	49-157	.312	103-142	.725	73	182	255	3.4	231	10	63	108	9	47	402	5.4



12
ANNA LAPPENKÜPER

Freshman | 5-8
Herne, Germany
Otto Hahn Gymnasium

GUARD

SEASON HIGH	CATEGORY	CAREER HIGH
39, at South Dakota State, 1/5/2017	Minutes	39, at South Dakota State, 1/5/2017
13, vs Western Illinois, 12/28/2016	Points	13, vs Western Illinois, 12/28/2016
5, two times	Rebounds	5, two times
5, two times	Assists	5, two times
2, three times	Steals	2, three times
1, two times	Blocks	1, two times
5, two times	FG Made	5, two times
15, at South Dakota State, 1/5/2017	FG Attempts	15, at South Dakota State, 1/5/2017
3, vs Western Illinois, 12/28/2016	3-PT Made	3, vs Western Illinois, 12/28/2016
10, at South Dakota State, 1/5/2017	3-PT Attempts	10, at South Dakota State, 1/5/2017
7, at Oral Roberts, 12/31/2016	FT Made	7, at Oral Roberts, 12/31/2016
8, at Oral Roberts, 12/31/2016	FT Attempts	8, at Oral Roberts, 12/31/2016

• Competed for Germany's U16 and U18 National teams

SEASON STATS

Opponent	Date	gs	min	Total		3-Pointers		Free throws		Rebounds				pf	a	t/o	blk	stl	pts	avg
				fg-fga	pct	3fg-fga	pct	ft-fa	pct	off	def	tot	avg							
BELMONT	11/11/16	*	33	1-4	.250	0-1	.000	0-0	.000	0	5	5	5.0	2	5	4	0	1	2	2.0
DEFIANCE	11/12/16	*	26	2-8	.250	0-2	.000	2-2	1.000	1	3	4	4.5	0	5	2	1	0	6	4.0
TRINE	11/14/16	*	24	2-5	.400	0-1	.000	2-2	1.000	0	1	1	3.3	5	0	3	0	0	6	4.7
at Butler	11/16/16	*	31	2-4	.500	1-2	.500	0-0	.000	0	2	2	3.0	3	0	4	0	2	5	4.8
OAKLAND	11/19/16	*	32	2-6	.333	0-1	.000	0-0	.000	0	1	1	2.6	1	3	6	0	2	4	4.6
COASTAL CAROLINA	11/26/16	*	29	3-7	.429	0-1	.000	0-0	.000	0	2	2	2.5	2	3	4	0	1	6	4.8
at Kent State	11/30/16	*	19	0-3	.000	0-1	.000	0-0	.000	0	0	0	2.1	2	1	3	0	1	0	4.1
at Illinois	12/02/16		25	3-6	.500	1-2	.500	0-0	.000	0	1	1	2.0	0	0	5	0	0	7	4.5
at Western Michigan	12/06/16		26	0-4	.000	0-2	.000	0-0	.000	0	5	5	2.3	1	0	5	1	0	0	4.0
at UIC	12/10/16		20	1-3	.333	0-1	.000	2-2	1.000	1	2	3	2.4	2	2	1	0	0	4	4.0
vs Miami (Ohio)	12/19/16		34	1-7	.143	0-3	.000	3-6	.500	1	2	3	2.5	2	1	2	0	0	5	4.1
at Wright State	12/20/16	*	29	3-4	.750	0-1	.000	0-0	.000	1	2	3	2.5	3	1	3	0	0	6	4.3
vs Eastern Kentucky	12/21/16		21	2-4	.500	2-3	.667	0-0	.000	0	2	2	2.5	1	0	4	0	1	6	4.4
WESTERN ILLINOIS	12/28/16	*	36	5-8	.625	3-4	.750	0-0	.000	0	3	3	2.5	1	0	7	0	1	13	5.0
at Oral Roberts	12/31/16	*	28	2-3	.667	0-1	.000	7-8	.875	0	3	3	2.5	5	0	1	0	0	11	5.4
at South Dakota State	01/05/17	*	39	5-15	.333	2-10	.200	0-0	.000	0	4	4	2.6	3	0	1	0	2	12	5.8
Totals		11	452	34-91	.374	9-36	.250	16-20	.800	4	38	42	2.6	33	21	55	2	11	93	5.8

Games played: 16
Minutes/game: 28.3
Points/game: 5.8
FG Pct: 37.4
3FG Pct: 25.0
FT Pct: 80.0

Rebounds/game: 2.6
Assists/game: 1.3
Turnovers/game: 3.4
Assist/turnover ratio: 0.4
Steals/game: 0.7
Blocks/game: 0.1

CAREER STATS

Season	gp-gs	min/avg	Total		3-Point		F-Throws		Rebounds				Scoring							
			fg-fga	pct	fg-fga	pct	ft-fa	pct	off	def	tot	avg	pf	fo	ast	to	blk	stl	pts	avg
2016-17	16-11	452/28.3	34-91	.374	9-36	.250	16-20	.800	4	38	42	2.6	33	2	21	55	2	11	93	5.8
TOTAL	16-11	452/28.3	34-91	.374	9-36	.250	16-20	.800	4	38	42	2.6	33	2	21	55	2	11	93	5.8



DE'JOUR YOUNG **13**

Sophomore | 5-7
Fort Wayne, Ind.
Concordia Lutheran H.S.

GUARD

SEASON HIGH	CATEGORY	CAREER HIGH
39, at Wright State, 12/20/2016	Minutes	39, at Wright State, 12/20/2016
21, vs Oakland, 11/19/2016	Points	21, vs Oakland, 11/19/2016
9, two times	Rebounds	10, vs. USC Upstate, 11/21/2015
5, at South Dakota State, 1/5/2017	Assists	5, at South Dakota State, 1/5/2017
3, vs Trine, 11/14/2016	Steals	5, vs. Grace, 11/16/2015
—	Blocks	2, two times
7, three times	FG Made	7, three times
18, vs Western Illinois, 12/28/2016	FG Attempts	18, vs Western Illinois, 12/28/2016
3, vs Oakland, 11/19/2016	3-PT Made	3, vs Oakland, 11/19/2016
5, two times	3-PT Attempts	5, two times
8, vs Oakland, 11/19/2016	FT Made	8, vs Oakland, 11/19/2016
10, vs Oakland, 11/19/2016	FT Attempts	10, vs Oakland, 11/19/2016

CAREER VS. NORTH DAKOTA STATE

Season	gp-gs	min/avg	Total fg-fga	pct	3-Point fg-fga	pct	F-Throws ft-fga	pct	Rebounds off	def	tot	avg	pf	fo	ast	to	blk	stl	pts	avg
2015-16	2-1	45/22.5	4-8	.500	2-2	1.000	7-8	.875	2	4	6	3.0	5	0	1	3	1	3	17	8.5
TOTAL	2-1	45/22.5	4-8	.500	2-2	1.000	7-8	.875	2	4	6	3.0	5	0	1	3	1	3	17	8.5

SINGLE-GAME HIGHS [all-time ranking]:

Points: 16, North Dakota State -- 02/27/16
Rebounds: 6, North Dakota State -- 02/27/16
Assists: 1, North Dakota State -- 02/27/16
Steals: 3, North Dakota State -- 02/27/16
Blocks: 1, North Dakota State -- 02/27/16
FG made: 4, North Dakota State -- 02/27/16

FG attempts: 8, North Dakota State -- 02/27/16
3FG made: 2, North Dakota State -- 02/27/16
3FG attempts: 2, North Dakota State -- 02/27/16
FT made: 6, North Dakota State -- 02/27/16
FT attempts: 6, North Dakota State -- 02/27/16

SEASON STATS

Opponent	Date	qs	min	Total		3-Pointers		Free throws		Rebounds				pf	a	t/o	blk	stl	pts	avg	
				fg-fga	pct	3fg-fga	pct	ft-fa	pct	off	def	tot	avg								
BELMONT	11/11/16	*	25	4-9	.444	0-2	.000	2-2	1.000	3	3	6	6.0	3	1	1	0	0	10	10.0	
DEFIANCE	11/12/16	*	16	6-9	.667	1-1	1.000	0-0	.000	3	1	4	5.0	1	3	2	0	0	13	11.5	
TRINE	11/14/16	*	28	6-13	.462	2-5	.400	2-2	1.000	0	1	1	3.7	4	0	3	0	3	16	13.0	
at Butler	11/16/16	*	13	1-3	.333	0-0	.000	0-0	.000	0	0	0	2.8	1	1	1	0	0	2	10.3	
OAKLAND	11/19/16	*	32	5-9	.556	3-5	.600	8-10	.800	2	3	5	3.2	4	1	4	0	0	21	12.4	
COASTAL CAROLINA	11/26/16	*	32	2-5	.400	0-2	.000	4-4	1.000	1	6	7	3.8	3	0	4	0	1	8	11.7	
at Kent State	11/30/16	*	22	4-6	.667	1-3	.333	3-4	.750	0	1	1	3.4	3	1	2	0	2	12	11.7	
at Illinois	12/02/16	*	34	3-13	.231	0-4	.000	5-6	.833	2	3	5	3.6	1	2	3	0	0	11	11.6	
at Western Michigan	12/06/16	*	33	3-12	.250	0-4	.000	3-3	1.000	2	5	7	4.0	1	1	2	0	0	9	11.3	
at UIC	12/10/16	*	36	7-15	.467	1-4	.250	2-2	1.000	2	7	9	4.5	1	4	3	0	1	17	11.9	
vs Miami (Ohio)	12/19/16	*	22	3-8	.375	0-3	.000	0-0	.000	2	1	3	4.4	2	1	2	0	0	6	11.4	
at Wright State	12/20/16	*	39	4-7	.571	0-2	.000	6-6	1.000	1	3	4	4.3	0	1	5	0	0	14	11.6	
vs Eastern Kentucky	12/21/16	*	38	7-12	.583	0-1	.000	5-6	.833	1	8	9	4.7	3	1	1	0	2	19	12.2	
WESTERN ILLINOIS	12/28/16	*	36	7-18	.389	1-4	.250	0-0	.000	0	5	5	4.7	3	0	2	0	1	15	12.4	
at Oral Roberts	12/31/16	*	31	2-4	.500	0-0	.000	4-4	1.000	1	2	3	4.6	1	2	4	0	2	8	12.1	
at South Dakota State	01/05/17	*	30	3-9	.333	0-1	.000	0-0	.000	0	6	6	4.7	4	5	2	0	2	6	11.7	
Totals			16	467	67-152	.441	9-41	.220	44-49	.898	20	55	75	4.7	35	24	41	0	14	187	11.7

Games played: 16
Minutes/game: 29.2
Points/game: 11.7
FG Pct: 44.1
3FG Pct: 22.0
FT Pct: 89.8

Rebounds/game: 4.7
Assists/game: 1.5
Turnovers/game: 2.6
Assist/turnover ratio: 0.6
Steals/game: 0.9

CAREER STATS

Season	gp-gs	min/avg	Total fg-fga	pct	3-Point fg-fga	pct	F-Throws ft-fga	pct	Rebounds off	def	tot	avg	pf	fo	ast	to	blk	stl	pts	avg
2015-16	30-21	688/22.9	72-176	.409	8-19	.421	51-72	.708	55	52	107	3.6	69	1	34	34	8	33	203	6.8
2016-17	16-16	467/29.2	67-152	.441	9-41	.220	44-49	.898	20	55	75	4.7	35	0	24	41	0	14	187	11.7
TOTAL	46-37	1155/25.1	139-328	.424	17-60	.283	95-121	.785	75	107	182	4.0	104	1	58	75	8	47	390	8.5



**SELENA
LOZADA**

15

Senior | 6-2
 Perth Amboy, N.J.
 Western Guilford H.S.
 Guilford Technical CC

FORWARD

SEASON HIGH	CATEGORY	CAREER HIGH
30, vs Eastern Kentucky, 12/21/2016	Minutes	30, vs Eastern Kentucky, 12/21/2016
12, two times	Points	13, vs. Trine, 11/16/2015
7, vs Eastern Kentucky, 12/21/2016	Rebounds	7, vs Eastern Kentucky, 12/21/2016
3, vs Eastern Kentucky, 12/21/2016	Assists	3, vs Eastern Kentucky, 12/21/2016
1, six times	Steals	2, two times
3, vs Western Illinois, 12/28/2016	Blocks	3, vs Western Illinois, 12/28/2016
6, two times	FG Made	6, two times
17, at Oral Roberts, 12/31/2016	FG Attempts	17, at Oral Roberts, 12/31/2016
—	3-PT Made	—
1, at Illinois, 12/2/2016	3-PT Attempts	1, at Illinois, 12/2/2016
4, at Kent State, 11/30/2016	FT Made	7, vs. Trine, 11/16/2015
8, vs Defiance, 11/12/2016	FT Attempts	10, vs. Trine, 11/16/2015

• Named to the 2015-16 Summit League Winter/Spring Academic Honor Roll

SEASON STATS

				Total		3-Pointers		Free throws		Rebounds											
Opponent	Date	qs	min	fg-fga	pct	3fg-fga	pct	ft-fga	pct	off	def	tot	avg	pf	a	t/o	blk	stl	pts	avg	
BELMONT	11/11/16	*	28	6-15	.400	0-0	.000	0-2	.000	3	3	6	6.0	5	1	0	1	1	12	12.0	
DEFIANCE	11/12/16	*	13	2-6	.333	0-0	.000	3-8	.375	2	2	4	5.0	2	0	1	0	1	7	9.5	
TRINE	11/14/16	*	16	3-6	.500	0-0	.000	0-0	.000	2	3	5	5.0	3	1	1	2	0	6	8.3	
at Butler	11/16/16	*	12	1-3	.333	0-0	.000	0-0	.000	0	0	0	3.8	2	0	1	0	0	2	6.8	
OAKLAND	11/19/16		20	4-6	.667	0-0	.000	1-3	.333	3	2	5	4.0	2	0	1	0	1	9	7.2	
COASTAL CAROLINA	11/26/16	*	15	2-7	.286	0-0	.000	3-3	1.000	6	0	6	4.3	4	1	1	1	1	7	7.2	
at Kent State	11/30/16	*	27	2-3	.667	0-0	.000	4-4	1.000	1	5	6	4.6	4	0	2	1	0	8	7.3	
at Illinois	12/02/16	*	25	0-3	.000	0-1	.000	0-0	.000	1	1	2	4.3	2	0	2	1	0	0	6.4	
at Western Michigan	12/06/16	*	26	2-5	.400	0-0	.000	0-0	.000	2	0	2	4.0	4	0	2	0	0	4	6.1	
at UIC	12/10/16	*	25	2-5	.400	0-0	.000	1-1	1.000	1	3	4	4.0	3	0	2	0	0	5	6.0	
vs Miami (Ohio)	12/19/16	*	23	0-2	.000	0-0	.000	3-4	.750	0	1	1	3.7	4	0	2	0	0	3	5.7	
at Wright State	12/20/16		21	2-5	.400	0-0	.000	1-2	.500	2	0	2	3.6	4	0	2	1	1	5	5.7	
vs Eastern Kentucky	12/21/16	*	30	1-4	.250	0-0	.000	0-2	.000	3	4	7	3.8	2	3	4	0	1	2	5.4	
WESTERN ILLINOIS	12/28/16		18	0-2	.000	0-0	.000	0-0	.000	0	4	4	3.9	0	0	1	3	0	0	5.0	
at Oral Roberts	12/31/16		20	6-17	.353	0-0	.000	0-0	.000	3	3	6	4.0	3	0	1	1	1	12	5.5	
at South Dakota State	01/05/17	dnp		-	-	-	-	-	-	-	-	-	-	-	-	-	-	-	-	-	
Totals		11	319	33-89	.371	0-1	.000	16-29	.552	29	31	60	4.0	44	6	23	11	7	82	5.5	

Games played: 15
 Minutes/game: 21.3
 Points/game: 5.5
 FG Pct: 37.1
 3FG Pct: 0.0
 FT Pct: 55.2

Rebounds/game: 4.0
 Assists/game: 0.4
 Turnovers/game: 1.5
 Assist/turnover ratio: 0.3
 Steals/game: 0.5
 Blocks/game: 0.7

CAREER STATS

Season	gp-gs	min/avg	Total		3-Point		F-Throws		Rebounds				pf	fo	ast	to	blk	stl	Scoring	
			fg-fga	pct	fg-fga	pct	ft-fga	pct	off	def	tot	avg							pts	avg
2015-16	25-6	251/10.0	21-71	.296	0-0	.000	18-36	.500	13	27	40	1.6	41	0	2	15	4	5	60	2.4
2016-17	15-11	319/21.3	33-89	.371	0-1	.000	16-29	.552	29	31	60	4.0	44	1	6	23	11	7	82	5.5
TOTAL	40-17	570/14.3	54-160	.338	0-1	.000	34-65	.523	42	58	100	2.5	85	1	8	38	15	12	142	3.6



SEASON HIGH	CATEGORY	CAREER HIGH
24, at UIC, 12/10/2016	Minutes	25, vs. Denver, 1/30/2016
9, two times	Points	9, four times
5, three times	Rebounds	6, at Northern Kentucky, 12/5/2015
2, vs Miami (Ohio), 12/19/2016	Assists	2, vs Miami (Ohio), 12/19/2016
2, two times	Steals	2, two times
1, four times	Blocks	1, seven times
4, at UIC, 12/10/2016	FG Made	4, two times
10, at Butler, 11/16/2016	FG Attempts	10, at Butler, 11/16/2016
—	3-PT Made	—
2, vs Miami (Ohio), 12/19/2016	3-PT Attempts	2, vs Miami (Ohio), 12/19/2016
3, at Butler, 11/16/2016	FT Made	7, at Northern Kentucky, 12/5/2015
4, two times	FT Attempts	8, at Northern Kentucky, 12/5/2015

CAREER VS. NORTH DAKOTA STATE

Season	gp-gs	min/avg	Total fg-fga	pct	3-Point fg-fga	pct	F-Throws ft-fga	pct	Rebounds off	def	tot	avg	pf	fo	ast	to	blk	stl	pts	avg
2015-16	2-0	8/4.0	1-3	.333	0-0	.000	0-0	.000	0	1	1	0.5	3	0	0	0	0	1	2	1.0
TOTAL	2-0	8/4.0	1-3	.333	0-0	.000	0-0	.000	0	1	1	0.5	3	0	0	0	0	1	2	1.0

SINGLE-GAME HIGHS [all-time ranking]:

Points: 2, North Dakota State -- 02/27/16

Rebounds: 1, at North Dakota State -- 01/23/16

Steals: 1, North Dakota State -- 02/27/16

FG made: 1, North Dakota State -- 02/27/16

FG attempts: 3, North Dakota State -- 02/27/16

SEASON STATS

Opponent	Date	gs	min	Total		3-Pointers		Free throws		Rebounds				pf	a	t/o	blk	stl	pts	avg
				fg-fga	pct	3fg-fga	pct	ft-fa	pct	off	def	tot	avg							
BELMONT	11/11/16	*	21	2-8	.250	0-0	.000	1-2	.500	0	1	1	1.0	3	0	1	0	0	5	5.0
DEFIANCE	11/12/16		20	3-8	.375	0-0	.000	0-0	.000	1	4	5	3.0	5	0	3	0	1	6	5.5
TRINE	11/14/16		18	2-5	.400	0-0	.000	1-4	.250	1	2	3	3.0	2	0	0	0	0	5	5.3
at Butler	11/16/16		25	3-10	.300	0-0	.000	3-4	.750	1	4	5	3.5	5	0	0	0	2	9	6.3
OAKLAND	11/19/16		13	1-3	.333	0-0	.000	2-2	1.000	1	0	1	3.0	4	0	1	0	0	4	5.8
COASTAL CAROLINA	11/26/16		22	2-9	.222	0-0	.000	0-0	.000	3	2	5	3.3	3	0	2	0	0	4	5.5
at Kent State	11/30/16		14	1-5	.200	0-0	.000	1-2	.500	1	0	1	3.0	5	0	1	1	0	3	5.1
at Illinois	12/02/16		21	1-3	.333	0-0	.000	0-0	.000	1	0	1	2.8	3	0	3	1	0	2	4.8
at Western Michigan	12/06/16		21	3-6	.500	0-0	.000	1-2	.500	0	2	2	2.7	3	0	0	0	1	7	5.0
at UIC	12/10/16		24	4-7	.571	0-0	.000	1-2	.500	1	1	2	2.6	4	1	2	1	2	9	5.4
vs Miami (Ohio)	12/19/16		21	1-5	.200	0-2	.000	0-0	.000	1	1	2	2.5	2	2	4	0	0	2	5.1
at Wright State	12/20/16		7	0-2	.000	0-0	.000	0-0	.000	0	2	2	2.5	1	0	1	0	0	0	4.7
vs Eastern Kentucky	12/21/16	dnp		-	-	-	-	-	-	-	-	-	-	-	-	-	-	-	-	-
WESTERN ILLINOIS	12/28/16		6	0-2	.000	0-0	.000	0-0	.000	0	1	1	2.4	1	0	0	0	0	0	4.3
at Oral Roberts	12/31/16		5	0-3	.000	0-0	.000	0-0	.000	0	0	0	2.2	5	0	1	0	0	0	4.0
at South Dakota State	01/05/17		16	0-2	.000	0-0	.000	0-0	.000	1	0	1	2.1	2	0	1	1	0	0	3.7
Totals		1	254	23-78	.295	0-2	.000	10-18	.556	12	20	32	2.1	48	3	20	4	6	56	3.7

Games played: 15
 Minutes/game: 16.9
 Points/game: 3.7
 FG Pct: 29.5
 3FG Pct: 0.0
 FT Pct: 55.6

Rebounds/game: 2.1
 Assists/game: 0.2
 Turnovers/game: 1.3
 Assist/turnover ratio: 0.2
 Steals/game: 0.4
 Blocks/game: 0.3

CAREER STATS

Season	gp-gs	min/avg	Total fg-fga	pct	3-Point fg-fga	pct	F-Throws ft-fga	pct	Rebounds off	def	tot	avg	pf	fo	ast	to	blk	stl	pts	avg
2015-16	25-1	216/8.6	16-46	.348	0-0	.000	10-13	.769	10	25	35	1.4	39	0	0	10	3	5	42	1.7
2016-17	15-1	254/16.9	23-78	.295	0-2	.000	10-18	.556	12	20	32	2.1	48	4	3	20	4	6	56	3.7
TOTAL	40-2	470/11.8	39-124	.315	0-2	.000	20-31	.645	22	45	67	1.7	87	4	3	30	7	11	98	2.5



FORT WAYNE
22

ZARIA
ATKINS

Freshman | 5-7
Dudley, N.C.
Southern Wayne H.S.

GUARD

SEASON HIGH	CATEGORY	CAREER HIGH
38, at Wright State, 12/20/2016	Minutes	38, at Wright State, 12/20/2016
18, vs Eastern Kentucky, 12/21/2016	Points	18, vs Eastern Kentucky, 12/21/2016
5, at Western Michigan, 12/6/16	Rebounds	5, at Western Michigan, 12/6/16
5, at South Dakota State, 1/5/2017	Assists	5, at South Dakota State, 1/5/2017
3, vs Defiance, 11/12/2016	Steals	3, vs Defiance, 11/12/2016
	Blocks	
5, three times	FG Made	5, three times
10, two times	FG Attempts	10, two times
2, three times	3-PT Made	2, three times
5, vs Miami (Ohio), 12/19/2015	3-PT Attempts	5, vs Miami (Ohio), 12/19/2015
9, vs Eastern Kentucky, 12/21/2016	FT Made	9, vs Eastern Kentucky, 12/21/2016
9, vs Eastern Kentucky, 12/21/2016	FT Attempts	9, vs Eastern Kentucky, 12/21/2016

SEASON STATS

Opponent	Date	gs	min	Total		3-Pointers		Free throws		Rebounds								pts	avg		
				fg-fga	pct	3fg-fga	pct	ft-fa	pct	off	def	tot	avg	pf	a	t/o	blk	stl			
BELMONT	11/11/16		21	1-6	.167	0-2	.000	2-2	1.000	0	2	2	2.0	1	0	2	0	0	4	4.0	
DEFIANCE	11/12/16		17	2-7	.286	0-0	.000	3-4	.750	0	0	0	1.0	1	3	1	0	3	7	5.5	
TRINE	11/14/16		22	3-6	.500	0-2	.000	0-0	.000	1	0	1	1.0	1	0	1	0	0	6	5.7	
at Butler	11/16/16		17	2-4	.500	1-2	.500	0-0	.000	0	1	1	1.0	0	1	0	0	0	5	5.5	
OAKLAND	11/19/16		13	1-3	.333	0-0	.000	4-4	1.000	0	0	0	0.8	2	1	1	0	2	6	5.6	
COASTAL CAROLINA	11/26/16		25	5-7	.714	0-1	.000	4-4	1.000	1	0	1	0.8	4	1	2	0	0	14	7.0	
at Kent State	11/30/16	*	31	3-10	.300	2-2	1.000	2-3	.667	1	1	2	1.0	2	2	2	0	0	10	7.4	
at Illinois	12/02/16	*	30	0-5	.000	0-2	.000	5-8	.625	1	3	4	1.4	1	1	1	0	1	5	7.1	
at Western Michigan	12/06/16	*	23	1-6	.167	0-0	.000	4-4	1.000	2	3	5	1.8	1	1	5	0	1	6	7.0	
at UIC	12/10/16	*	16	0-2	.000	0-0	.000	3-4	.750	0	3	3	1.9	0	0	2	0	1	3	6.6	
vs Miami (Ohio)	12/19/16	*	24	5-10	.500	2-5	.400	0-0	.000	1	6	7	2.4	3	1	4	0	1	12	7.1	
at Wright State	12/20/16	*	38	4-8	.500	2-3	.667	2-2	1.000	1	3	4	2.5	1	2	3	0	1	12	7.5	
vs Eastern Kentucky	12/21/16	*	34	4-8	.500	1-3	.333	9-9	1.000	1	4	5	2.7	1	2	5	0	2	18	8.3	
WESTERN ILLINOIS	12/28/16	*	30	2-7	.286	0-3	.000	1-1	1.000	0	1	1	2.6	3	4	4	0	1	5	8.1	
at Oral Roberts	12/31/16	*	33	5-8	.625	1-1	1.000	2-2	1.000	0	0	0	2.4	0	1	2	0	1	13	8.4	
at South Dakota State	01/05/17	*	36	0-8	.000	0-2	.000	7-8	.875	1	1	2	2.4	1	5	1	0	0	7	8.3	
Totals			10	410	38-105	.362	9-28	.321	48-55	.873	10	28	38	2.4	22	25	36	0	14	133	8.3

Games played: 16
 Minutes/game: 25.6
 Points/game: 8.3
 FG Pct: 36.2
 3FG Pct: 32.1
 FT Pct: 87.3

Rebounds/game: 2.4
 Assists/game: 1.6
 Turnovers/game: 2.3
 Assist/turnover ratio: 0.7
 Steals/game: 0.9

CAREER STATS

			Total		3-Point		F-Throws		Rebounds											Scoring	
Season	gp-gs	min/avg	fg-fga	pct	fg-fga	pct	ft-fa	pct	off	def	tot	avg	pf	fo	ast	to	blk	stl	pts	avg	
2016-17	16-10	410/25.6	38-105	.362	9-28	.321	48-55	.873	10	28	38	2.4	22	0	25	36	0	14	133	8.3	
TOTAL	16-10	410/25.6	38-105	.362	9-28	.321	48-55	.873	10	28	38	2.4	22	0	25	36	0	14	133	8.3	



PORT WAYNE

23

PEYTON FALLIS

Sophomore | 5-10
Indianapolis, Ind.
Heritage Christian H.S.

GUARD

SEASON HIGH	CATEGORY	CAREER HIGH
32, at Western Michigan, 12/6/2016	Minutes	32, at Western Michigan, 12/6/2016
22, at Butler, 11/16/2016	Points	22, at Butler, 11/16/2016
5, at Western Michigan, 12/6/2016	Rebounds	5, three times
2, three times	Assists	3, two times
2, two times	Steals	3, two times
1, vs Western Illinois, 12/28/2016	Blocks	1, three times
7, at Butler, 11/16/2016	FG Made	7, at Butler, 11/16/2016
11, two times	FG Attempts	14, vs. Western Michigan, 11/29/2015
4, at Butler, 11/16/2016	3-PT Made	4, at Butler, 11/16/2016
6, at Butler, 11/16/2016	3-PT Attempts	6, two times
4, at Butler, 11/16/2016	FT Made	4, at Butler, 11/16/2016
4, at Butler, 11/16/2016	FT Attempts	6, two times

• Named to the 2015-16 Summit League Winter/Spring Academic Honor Roll

SEASON STATS

			Total			3-Pointers		Free throws		Rebounds											
Opponent	Date	gs	min	fg-fga	pct	3fg-fga	pct	ft-fga	pct	off	def	tot	avg	pf	a	t/o	blk	stl	pts	avg	
BELMONT	11/11/16	dnp	-	-	-	-	-	-	-	-	-	-	-	-	-	-	-	-	-	-	
DEFIANCE	11/12/16	dnp	-	-	-	-	-	-	-	-	-	-	-	-	-	-	-	-	-	-	
TRINE	11/14/16	26	4-10	.400	1-4	.250	3-3	1.000	1	0	1	1.0	0	1	1	0	2	12	12.0		
at Butler	11/16/16	29	7-11	.636	4-6	.667	4-4	1.000	0	1	1	1.0	1	2	4	0	1	22	17.0		
OAKLAND	11/19/16	*	29	2-9	.222	0-4	.000	0-0	.000	0	2	2	1.3	1	2	6	0	1	4	12.7	
COASTAL CAROLINA	11/26/16	27	3-9	.333	0-2	.000	0-2	.000	1	2	3	1.8	4	1	1	0	0	6	11.0		
at Kent State	11/30/16	18	0-6	.000	0-2	.000	2-2	1.000	2	1	3	2.0	4	2	1	0	0	2	9.2		
at Illinois	12/02/16	4	0-2	.000	0-0	.000	0-0	.000	0	1	1	1.8	1	0	2	0	0	0	7.7		
at Western Michigan	12/06/16	32	2-11	.182	0-3	.000	1-2	.500	1	4	5	2.3	3	1	3	0	2	5	7.3		
at UIC	12/10/16	21	0-3	.000	0-2	.000	0-0	.000	0	1	1	2.1	5	0	4	0	0	0	6.4		
vs Miami (Ohio)	12/19/16	dnp	-	-	-	-	-	-	-	-	-	-	-	-	-	-	-	-	-	-	
at Wright State	12/20/16	dnp	-	-	-	-	-	-	-	-	-	-	-	-	-	-	-	-	-	-	
vs Eastern Kentucky	12/21/16	dnp	-	-	-	-	-	-	-	-	-	-	-	-	-	-	-	-	-	-	
WESTERN ILLINOIS	12/28/16	20	1-3	.333	0-1	.000	0-0	.000	0	0	0	1.9	1	0	3	1	0	2	5.9		
at Oral Roberts	12/31/16	8	1-3	.333	0-0	.000	0-0	.000	1	2	3	2.0	0	0	1	0	0	2	5.5		
at South Dakota State	01/05/17	dnp	-	-	-	-	-	-	-	-	-	-	-	-	-	-	-	-	-	-	
Totals		1	214	20-67	.299	5-24	.208	10-13	.769	6	14	20	2.0	20	9	26	1	6	55	5.5	

Games played: 10
Minutes/game: 21.4
Points/game: 5.5
FG Pct: 29.9
3FG Pct: 20.8
FT Pct: 76.9

Rebounds/game: 2.0
Assists/game: 0.9
Turnovers/game: 2.6
Assist/turnover ratio: 0.3
Steals/game: 0.6
Blocks/game: 0.1

CAREER STATS

Season	gp-gs	min/avg	Total		3-Point		F-Throws		Rebounds										Scoring	
			fg-fga	pct	fg-fga	pct	ft-fga	pct	off	def	tot	avg	pf	fo	ast	to	blk	stl	pts	avg
2015-16	28-1	408/14.6	32-132	.242	11-54	.204	23-37	.622	17	38	55	2.0	57	0	23	41	2	23	98	3.5
2016-17	10-1	214/21.4	20-67	.299	5-24	.208	10-13	.769	6	14	20	2.0	20	1	9	26	1	6	55	5.5
TOTAL	38-2	622/16.4	52-199	.261	16-78	.205	33-50	.660	23	52	75	2.0	77	1	32	67	3	29	153	4.0



RACHEL RINEHART

Senior | 5-8
Angola, Ind.
Angola H.S.

31

GUARD

SEASON HIGH	CATEGORY	CAREER HIGH
37, at South Dakota State, 1/5/2017	Minutes	39, vs. Western Illinois, 1/2/2015
16, at UIC, 12/10/2016	Points	31, vs. Western Illinois, 1/2/2015
10, at Illinois, 12/2/2016	Rebounds	10, at Illinois, 12/2/2016
6, vs Trine, 11/14/2016	Assists	8, two times
5, vs Western Illinois, 12/28/2016	Steals	6, at Milwaukee, 12/28/2015
—	Blocks	2, at Oral Roberts, 2/28/2014
6, at South Dakota State, 1/5/2017	FG Made	12, vs. Western Illinois, 1/2/2015
16, at South Dakota State, 1/5/2017	FG Attempts	20, vs. Western Illinois, 1/2/2015
2, vs Eastern Kentucky, 12/21/2016	3-PT Made	3, two times
6, at South Dakota State, 1/5/2017	3-PT Attempts	8, vs. Indiana, 11/12/2013
8, at UIC, 12/10/2016	FT Made	8, three times
11, at UIC, 12/10/2016	FT Attempts	11, at UIC, 12/10/2016

CAREER VS. NORTH DAKOTA STATE

Season	gp-gs	min/avg	Total fg-fga	pct	3-Point fg-fga	pct	F-Throws ft-fga	pct	Rebounds off	def	tot	avg	pf	fo	ast	to	blk	stl	pts	avg
2013-14	2-0	25/12.5	2-4	.500	2-3	.667	2-2	1.000	1	2	3	1.5	3	0	2	0	0	1	8	4.0
2014-15	2-2	41/20.5	5-15	.333	2-5	.400	0-1	.000	3	3	6	3.0	4	0	2	7	0	4	12	6.0
2015-16	2-2	38/19.0	5-14	.357	0-2	.000	8-9	.889	1	2	3	1.5	8	1	3	4	0	0	18	9.0
TOTAL	6-4	104/17.3	12-33	.364	4-10	.400	10-12	.833	5	7	12	2.0	15	1	7	11	0	5	38	6.3

SINGLE-GAME HIGHS [all-time ranking]:

Points: 18, at North Dakota State -- 01/23/16

Rebounds: 6, at North Dakota State -- 01/17/15

Assists: 2, at North Dakota State -- 01/09/14; at North Dakota State -- 01/17/15; North Dakota State -- 02/27/16

Steals: 3, at North Dakota State -- 01/17/15

FG made: 5, at North Dakota State -- 01/23/16

FG attempts: 14, at North Dakota State -- 01/23/16

3FG made: 2, at North Dakota State -- 01/09/14; North Dakota State -- 02/21/15

3FG attempts: 4, North Dakota State -- 02/21/15

FT made: 8, at North Dakota State -- 01/23/16

FT attempts: 9, at North Dakota State -- 01/23/16

SEASON STATS

Opponent	Date	gs	min	Total		3-Pointers		Free throws		Rebounds				pf	a	t/o	blk	stl	pts	avg	
				fg-fga	pct	3fg-fga	pct	ft-fa	pct	off	def	tot	avg								
BELMONT	11/11/16	*	23	3-5	.600	1-1	1.000	0-1	.000	0	0	0	0.0	3	1	4	0	0	7	7.0	
DEFIANCE	11/12/16	*	17	3-6	.500	0-0	.000	0-0	.000	0	3	3	1.5	2	5	0	0	1	6	6.5	
TRINE	11/14/16	*	21	3-6	.500	0-1	.000	2-3	.667	2	3	5	2.7	5	6	2	0	1	8	7.0	
at Butler	11/16/16	*	29	3-5	.600	0-0	.000	4-4	1.000	1	3	4	3.0	3	5	3	0	1	10	7.8	
OAKLAND	11/19/16	*	28	3-6	.500	1-1	1.000	1-1	1.000	0	5	5	3.4	1	3	3	0	3	8	7.8	
COASTAL CAROLINA	11/26/16	*	16	0-0	.000	0-0	.000	0-0	.000	0	1	1	3.0	2	1	1	0	0	0	6.5	
at Kent State	11/30/16		26	5-6	.833	1-1	1.000	1-1	1.000	1	2	3	3.0	5	2	3	0	2	12	7.3	
at Illinois	12/02/16	*	24	1-3	.333	0-0	.000	0-0	.000	1	9	10	3.9	2	0	1	0	0	2	6.6	
at Western Michigan	12/06/16	*	19	1-9	.111	0-3	.000	0-0	.000	1	0	1	3.6	3	1	1	0	1	2	6.1	
at UIC	12/10/16	*	32	4-8	.500	0-2	.000	8-11	.727	4	1	5	3.7	4	3	3	0	2	16	7.1	
vs Miami (Ohio)	12/19/16	*	20	2-4	.500	0-2	.000	0-0	.000	3	2	5	3.8	3	2	3	0	2	4	6.8	
at Wright State	12/20/16	*	29	3-6	.500	0-2	.000	1-2	.500	1	3	4	3.8	1	2	3	0	0	7	6.8	
vs Eastern Kentucky	12/21/16	*	34	3-6	.500	2-3	.667	5-5	1.000	1	3	4	3.8	3	4	4	0	2	13	7.3	
WESTERN ILLINOIS	12/28/16	*	31	4-7	.571	0-1	.000	2-2	1.000	0	2	2	3.7	3	5	3	0	5	10	7.5	
at Oral Roberts	12/31/16	*	22	1-4	.250	0-1	.000	0-0	.000	1	4	5	3.8	2	0	2	0	2	7	7.1	
at South Dakota State	01/05/17	*	37	6-16	.375	1-6	.167	0-0	.000	1	2	3	3.8	2	1	1	0	4	13	7.5	
Totals			15	408	45-97	.464	6-24	.250	24-30	.800	17	43	60	3.8	44	41	37	0	26	120	7.5

Games played: 16

Minutes/game: 25.5

Points/game: 7.5

FG Pct: 46.4

3FG Pct: 25.0

FT Pct: 80.0

Rebounds/game: 3.8

Assists/game: 2.6

Turnovers/game: 2.3

Assist/turnover ratio: 1.1

Steals/game: 1.6

CAREER STATS

Season	gp-gs	min/avg	Total fg-fga	pct	3-Point fg-fga	pct	F-Throws ft-fga	pct	Rebounds off	def	tot	avg	pf	fo	ast	to	blk	stl	pts	avg
2013-14	30-0	374/12.5	43-107	.402	17-51	.333	44-66	.667	15	42	57	1.9	45	0	40	30	0	17	147	4.9
2014-15	30-29	787/26.2	94-235	.400	20-66	.303	67-91	.736	33	78	111	3.7	82	3	77	77	7	44	275	9.2
2015-16	30-23	780/26.0	70-178	.393	11-43	.256	43-66	.652	41	76	117	3.9	96	7	86	71	1	50	194	6.5
2016-17	16-15	408/25.5	45-97	.464	6-24	.250	24-30	.800	17	43	60	3.8	44	2	41	37	0	26	120	7.5
TOTAL	106-67	2349/22.2	252-617	.408	54-184	.293	178-253	.704	106	239	345	3.3	267	12	244	215	8	137	736	6.9



NIA THOMAS
 Sophomore | 5-8
 Liberty Township, Ohio
 Lakota East H.S.
 Lincoln Trail College
GUARD

SEASON HIGH	CATEGORY	CAREER HIGH
13, vs Miami (Ohio), 12/19/2016	Minutes	13, vs Miami (Ohio), 12/19/2016
6, at Kent State, 11/30/2016	Points	6, at Kent State, 11/30/2016
3, two times	Rebounds	3, two times
1, vs Miami (Ohio), 12/19/2016	Assists	1, vs Miami (Ohio), 12/19/2016
1, at Illinois, 12/2/2016	Steals	1, at Illinois, 12/2/2016
	Blocks	
2, at Kent State, 11/30/2016	FG Made	2, at Kent State, 11/30/2016
4, at Kent State, 11/30/2016	FG Attempts	4, at Kent State, 11/30/2016
1, at Kent State, 11/30/2016	3-PT Made	1, at Kent State, 11/30/2016
1, two times	3-PT Attempts	1, two times
2, vs Miami (Ohio), 12/19/2016	FT Made	2, vs Miami (Ohio), 12/19/2016
2, two times	FT Attempts	2, two times

SEASON STATS

Opponent	Date	gs	min	Total		3-Pointers		Free throws		Rebounds				pf	a	t/o	blk	stl	pts	avg
				fg-fga	pct	3fg-fga	pct	ft-fga	pct	off	def	tot	avg							
BELMONT	11/11/16	dnp		-	-	-	-	-	-	-	-	-	-	-	-	-	-	-	-	-
DEFIANCE	11/12/16	10		1-3	.333	0-0	.000	0-0	.000	2	1	3	3.0	1	0	2	0	0	2	2.0
TRINE	11/14/16	dnp		-	-	-	-	-	-	-	-	-	-	-	-	-	-	-	-	-
at Butler	11/16/16	dnp		-	-	-	-	-	-	-	-	-	-	-	-	-	-	-	-	-
OAKLAND	11/19/16	1		0-0	.000	0-0	.000	0-0	.000	0	0	0	1.5	0	0	0	0	0	0	1.0
COASTAL CAROLINA	11/26/16	3		0-0	.000	0-0	.000	0-0	.000	0	0	0	1.0	0	0	0	0	0	0	0.7
at Kent State	11/30/16	11		2-4	.500	1-1	1.000	1-2	.500	0	2	2	1.3	2	0	0	0	0	6	2.0
at Illinois	12/02/16	3		0-0	.000	0-0	.000	0-0	.000	0	0	0	1.0	0	0	0	0	1	0	1.6
at Western Michigan	12/06/16	1		0-0	.000	0-0	.000	0-0	.000	0	0	0	0.8	0	0	0	0	0	0	1.3
at UIC	12/10/16	dnp		-	-	-	-	-	-	-	-	-	-	-	-	-	-	-	-	-
vs Miami (Ohio)	12/19/16	13		1-2	.500	0-0	.000	2-2	1.000	1	2	3	1.1	3	1	1	0	0	4	1.7
at Wright State	12/20/16	3		0-0	.000	0-0	.000	0-0	.000	0	0	0	1.0	0	0	0	0	0	0	1.5
vs Eastern Kentucky	12/21/16	2		0-2	.000	0-1	.000	0-0	.000	1	0	1	1.0	0	0	0	0	0	0	1.3
WESTERN ILLINOIS	12/28/16	dnp		-	-	-	-	-	-	-	-	-	-	-	-	-	-	-	-	-
at Oral Roberts	12/31/16	3		0-0	.000	0-0	.000	0-0	.000	0	0	0	0.9	0	0	1	0	0	0	1.2
at South Dakota State	01/05/17	dnp		-	-	-	-	-	-	-	-	-	-	-	-	-	-	-	-	-
Totals		0	50	4-11	.364	1-2	.500	3-4	.750	4	5	9	0.9	6	1	4	0	1	12	1.2

Games played: 10
 Minutes/game: 5.0
 Points/game: 1.2
 FG Pct: 36.4
 3FG Pct: 50.0
 FT Pct: 75.0

Rebounds/game: 0.9
 Assists/game: 0.1
 Turnovers/game: 0.4
 Assist/turnover ratio: 0.3
 Steals/game: 0.1



HANNAH HESS
 Freshman | 5-9
 Oregon, Ohio
 Clay H.S.
GUARD

SEASON HIGH	CATEGORY	CAREER HIGH
	Minutes	
	Points	
	Rebounds	
	Assists	
	Steals	
	Blocks	
	FG Made	
	FG Attempts	
	3-PT Made	
	3-PT Attempts	
	FT Made	
	FT Attempts	

FORT WAYNE SEASON STATS

RECORD:	OVERALL	HOME	AWAY	NEUTRAL
ALL GAMES	3-13	1-5	1-7	1-1
CONFERENCE	0-3	0-1	0-2	0-0
NON-CONFERENCE	3-10	1-4	1-5	1-1

		Total					3-Point		F-Throw		Rebounds											
#	Player	gp-gs	min	avg	fg-fga	fg%	3fg-fga	3fg%	ft-fga	ft%	off	def	tot	avg	pf	dq	a	to	blk	stl	pts	avg
01	Y. Ramirez-Tejeda	14-0	130	9.3	9-31	.290	0-0	.000	5-5	1.000	8	17	25	1.8	12	0	1	9	0	2	23	1.6
02	Nia Thomas	10-0	50	5.0	4-11	.364	1-2	.500	3-4	.750	4	5	9	0.9	6	0	1	4	0	1	12	1.2
03	KeShyra McCarver	16-15	400	25.0	37-108	.343	9-29	.310	24-31	.774	25	44	69	4.3	50	2	12	20	2	14	107	6.7
12	Anna Lappenküper	16-11	452	28.3	34-91	.374	9-36	.250	16-20	.800	4	38	42	2.6	33	2	21	55	2	11	93	5.8
13	De'Jour Young	16-16	467	29.2	67-152	.441	9-41	.220	44-49	.898	20	55	75	4.7	35	0	24	41	0	14	187	11.7
15	Selena Lozada	15-11	319	21.3	33-89	.371	0-1	.000	16-29	.552	29	31	60	4.0	44	1	6	23	11	7	82	5.5
21	Isis Parker	15-1	254	16.9	23-78	.295	0-2	.000	10-18	.556	12	20	32	2.1	48	4	3	20	4	6	56	3.7
22	Zaria Atkins	16-10	410	25.6	38-105	.362	9-28	.321	48-55	.873	10	28	38	2.4	22	0	25	36	0	14	133	8.3
23	Peyton Fallis	10-1	214	21.4	20-67	.299	5-24	.208	10-13	.769	6	14	20	2.0	20	1	9	26	1	6	55	5.5
31	Rachel Rinehart	16-15	408	25.5	45-97	.464	6-24	.250	24-30	.800	17	43	60	3.8	44	2	41	37	0	26	120	7.5
32	Lindley Kistler	6-0	64	10.7	9-19	.474	5-12	.417	7-10	.700	4	14	18	3.0	5	0	1	6	4	3	30	5.0
Team											31	25	56					15				
Total.....		16	3168		319-848	.376	53-199	.266	207-264	.784	170	334	504	31.5	319	12	144	292	24	104	898	56.1
Opponents.....		16	3174		411-891	.461	84-217	.387	199-295	.675	181	365	546	34.1	293	6	217	242	64	132	1105	69.1

TEAM STATISTICS	FW	OPP
SCORING	898	1105
Points per game	56.1	69.1
Scoring margin	-12.9	-
FIELD GOALS-ATT	319-848	411-891
Field goal pct	.376	.461
3 POINT FG-ATT	53-199	84-217
3-point FG pct	.266	.387
3-pt FG made per game	3.3	5.3
FREE THROWS-ATT	207-264	199-295
Free throw pct	.784	.675
F-Throws made per game	12.9	12.4
REBOUNDS	504	546
Rebounds per game	31.5	34.1
Rebounding margin	-2.6	-
ASSISTS	144	217
Assists per game	9.0	13.6
TURNOVERS	292	242
Turnovers per game	18.3	15.1
Turnover margin	-3.1	-
Assist/turnover ratio	0.5	0.9
STEALS	104	132
Steals per game	6.5	8.3
BLOCKS	24	64
Blocks per game	1.5	4.0
ATTENDANCE	6163	5810
Home games-Avg/Game	6-1027	8-608
Neutral site-Avg/Game	-	2-472

Date	Opponent		Score	Att.
11/11/16	BELMONT	L	59-85	1049
11/12/16	DEFIANCE	W	76-58	525
11/14/16	TRINE	L	71-80	565
11/16/16	at Butler	L	64-70	565
^ 11/19/16	OAKLAND	L	61-82	1667
^ 11/26/16	COASTAL CAROLINA	L	57-72	1789
11/30/16	at Kent State	L	55-66	327
12/02/16	at Illinois	L	33-56	1173
12/06/16	at Western Michigan	L	35-61	558
12/10/16	at UIC	W	61-55	200
# 12/19/16	vs Miami (Ohio)	L	47-69	391
# 12/20/16	at Wright State	L	51-62	438
# 12/21/16	vs Eastern Kentucky	W	68-59	552
* 12/28/16	WESTERN ILLINOIS	L	53-75	568
* 12/31/16	at Oral Roberts	L	56-82	330
* 01/05/17	at South Dakota State	L	51-73	1276

^ = at Memorial Coliseum

= Wright State Invitational Presented by Holiday Inn

* = Summit League game

Score by Periods	1st	2nd	3rd	4th	Totals
Fort Wayne	187	232	241	238	898
Opponents	291	234	280	300	1105

FORT WAYNE SUMMIT LEAGUE STATS

RECORD:	OVERALL	HOME	AWAY	NEUTRAL
ALL GAMES	0-3	0-1	0-2	0-0
CONFERENCE	0-3	0-1	0-2	0-0
NON-CONFERENCE	0-0	0-0	0-0	0-0

#	Player	gp-gs	min	avg	Total		3-Point		F-Throw		Rebounds				pf	dq	a	to	blk	stl	pts	avg
					fg-fga	fg%	3fg-fga	3fg%	ft-fta	ft%	off	def	tot	avg								
01	Y. Ramirez-Tejeda	3-0	43	14.3	3-9	.333	0-0	.000	0-0	.000	3	5	8	2.7	1	0	0	3	0	0	6	2.0
02	Nia Thomas	1-0	3	3.0	0-0	.000	0-0	.000	0-0	.000	0	0	0	0.0	0	0	0	1	0	0	0	0.0
03	KeShyra McCarver	3-3	72	24.0	7-22	.318	1-4	.250	8-11	.727	8	9	17	5.7	9	1	3	3	0	2	23	7.7
12	Anna Lappenküper	3-3	103	34.3	12-26	.462	5-15	.333	7-8	.875	0	10	10	3.3	9	1	0	9	0	3	36	12.0
13	De'Jour Young	3-3	97	32.3	12-31	.387	1-5	.200	4-4	1.000	1	13	14	4.7	8	0	7	8	0	5	29	9.7
15	Selena Lozada	2-0	38	19.0	6-19	.316	0-0	.000	0-0	.000	3	7	10	5.0	3	0	0	2	4	1	12	6.0
21	Isis Parker	3-0	27	9.0	0-7	.000	0-0	.000	0-0	.000	1	1	2	0.7	8	1	0	2	1	0	0	0.0
22	Zaria Atkins	3-3	99	33.0	7-23	.304	1-6	.167	10-11	.909	1	2	3	1.0	4	0	10	7	0	2	25	8.3
23	Peyton Fallis	2-0	28	14.0	2-6	.333	0-1	.000	0-0	.000	1	2	3	1.5	1	0	0	4	1	0	4	2.0
31	Rachel Rinehart	3-3	90	30.0	11-27	.407	1-8	.125	2-2	1.000	2	8	10	3.3	7	0	6	6	0	11	25	8.3
Team											8	2	10					5				
Total.....		3	600		60-170	.353	9-39	.231	31-36	.861	28	59	87	29.0	50	3	26	50	6	24	160	53.3
Opponents.....		3	600		89-168	.530	21-39	.538	31-41	.756	23	79	102	34.0	49	0	45	40	14	25	230	76.7

TEAM STATISTICS	FW	OPP	Date	Opponent	Score	Att.
SCORING	160	230	* 12/28/16	WESTERN ILLINOIS	L 53-75	568
Points per game	53.3	76.7	* 12/31/16	at Oral Roberts	L 56-82	330
Scoring margin	-23.3	-	* 01/05/17	at South Dakota State	L 51-73	1276
FIELD GOALS-ATT	60-170	89-168				
Field goal pct	.353	.530				
3 POINT FG-ATT	9-39	21-39				
3-point FG pct	.231	.538				
3-pt FG made per game	3.0	7.0				
FREE THROWS-ATT	31-36	31-41				
Free throw pct	.861	.756				
F-Throws made per game	10.3	10.3				
REBOUNDS	87	102				
Rebounds per game	29.0	34.0				
Rebounding margin	-5.0	-				
ASSISTS	26	45				
Assists per game	8.7	15.0				
TURNOVERS	50	40				
Turnovers per game	16.7	13.3				
Turnover margin	-3.3	-				
Assist/turnover ratio	0.5	1.1				
STEALS	24	25				
Steals per game	8.0	8.3				
BLOCKS	6	14				
Blocks per game	2.0	4.7				
ATTENDANCE	568	1606				
Home games-Avg/Game	1-568	2-803				
Neutral site-Avg/Game	-	0-0				

Score by Periods	1st	2nd	3rd	4th	Totals
Fort Wayne	32	44	47	37	160
Opponents	63	53	64	50	230

TV/RADIO ROSTER



#1 YULESKA RAMIREZ-TEJEDA
5-7 | Guard | Fr.
Cambridge, Massachusetts



#2 NIA THOMAS
5-8 | Guard | So.
Liberty Township, Ohio



#3 KeSHYRA MCCARVER
5-10 | Forward | Jr.
Toledo, Ohio



#5 HANNAH HESS
5-9 | Guard | Fr.
Oregon, Ohio



#12 ANNA LAPPENKÜPER
5-8 | Guard | Fr.
Herne, Germany



#13 De'JOUR YOUNG
5-7 | Guard | So.
Fort Wayne, Indiana



#15 SELENA LOZADA
6-2 | Forward | Sr.
Perth Amboy, New Jersey



#21 ISIS PARKER
6-0 | Forward | So.
Cleveland, Ohio



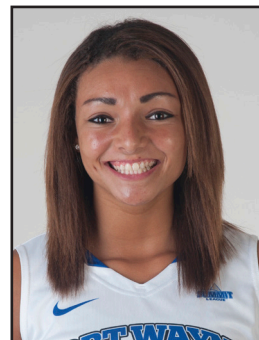
#22 ZARIA ATKINS
5-7 | Guard | Fr.
Dudley, North Carolina



#23 PEYTON FALLIS
5-10 | Guard | So.
Indianapolis, Indiana



#31 RACHEL RINEHART
5-8 | Guard | Sr.
Angola, Indiana



#32 LINDLEY KISTLER
6-0 | Forward | Fr.
Fort Wayne, Indiana



NIECEE NELSON
Head Coach
Concordia Portland '02



TY SHAW
Assistant Coach
Albertson '02



MARCIE ALBERTS
Assistant Coach
Ohio State '97



CAROL DUNCAN
Assistant Coach
Purdue '06



HALEY SEIBERT
Graduate Assistant Coach
IPFW '15

**1 • YULESKA RAMIREZ-TEJEDA • (YOU-less-Kuh) • G • Jr. • 5-7 • Cambridge, Mass. • Cambridge Rindge and Latin**

Season	GP	GS	MPG	Pts	PPG	RPG	Ast	Bik	Stl	FG%	3FG%	FT%
	14	0	9.3	23	1.6	1.79	1	0	2	.290	.000	1.000
Career	GP	GS	MPG	Pts	PPG	RPG	Ast	Bik	Stl	FG%	3FG%	FT%
	14	0	9.3	23	1.6	1.79	1	0	2	.290	.000	1.000

Season High	Career High
7, vs Defiance, 11/12/2016	Pts 7, vs Defiance, 11/12/2016
4, four times	Reb 4, four times
1, vs Belmont, 11/11/2016	Ast 1, vs Belmont, 11/11/2016
1, two times	Stl 1, two times
	Bik 3, two times
3, two times	FG 3, two times
2, vs Belmont, 11/11/2016	3PT 2, vs Belmont, 11/11/2016
	FT 2, vs Belmont, 11/11/2016

Career Notes
5-point games 2

**2 • NIA THOMAS • (KNEE-uh) • G • Fr. • 5-8 • Liberty Township, Ohio • Lakota East H.S.**

Season	GP	GS	MPG	Pts	PPG	RPG	Ast	Bik	Stl	FG%	3FG%	FT%
	10	0	5.0	12	1.2	0.90	1	0	1	.364	.500	.750
Career	GP	GS	MPG	Pts	PPG	RPG	Ast	Bik	Stl	FG%	3FG%	FT%
	10	0	5.0	12	1.2	0.90	1	0	1	.364	.500	.750

Season High	Career High
6, at Kent State, 11/30/2016	Pts 6, at Kent State, 11/30/2016
3, two times	Reb 3, two times
1, vs Miami (Ohio), 12/19/2016	Ast 1, vs Miami (Ohio), 12/19/2016
1, at Illinois, 12/2/2016	Stl 1, at Illinois, 12/2/2016
	Bik 2, at Kent State, 11/30/2016
2, at Kent State, 11/30/2016	FG 2, at Kent State, 11/30/2016
1, at Kent State, 11/30/2016	3-PT 1, at Kent State, 11/30/2016
2, vs Miami (Ohio), 12/19/2016	FT 2, vs Miami (Ohio), 12/19/2016

Career Notes
5-point games 1

**3 • KeSHYRA McCARVER • (Key-Shy-Ruh) • F • Jr. • 5-10 • Toledo, Ohio • Whitmer H.S.**

Season	GP	GS	MPG	Pts	PPG	RPG	Ast	Bik	Stl	FG%	3FG%	FT%
	16	15	25.0	107	6.7	4.31	12	2	14	.343	.310	.774
Career	GP	GS	MPG	Pts	PPG	RPG	Ast	Bik	Stl	FG%	3FG%	FT%
	75	38	19.6	402	5.4	3.40	63	9	47	.330	.312	.725

Season High	Career High
12, two times	Pts 22, at Illinois, 11/14/2014
7, vs Defiance, 11/12/2016	Reb 14, at Illinois, 11/14/2014
2, at UC, 12/10/2016	Ast 4, at Western Illinois, 1/31/2015
3, vs Defiance, 11/12/2016	Stl 3, four times
1, two times	Bik 2, at Omaha, 2/11/2016
5, two times	FG 7, vs USC Upstate, 11/21/2015
2, vs Western Illinois, 12/28/2016	3PT 4, vs Grace, 11/18/2014
6, vs Eastern Kentucky, 12/21/2016	FT 11, at Illinois, 11/14/2014

Career Notes
Double-Double 1
20-point games 3
10-point games 9
10-rebound games 1
5-rebound games 21
3-steal games 4
3-three's games 2

**5 • HANNAH HESS • G • Fr. • 5-9 • Oregon, Ohio • Clay H.S.**

Season	GP	GS	MPG	Pts	PPG	RPG	Ast	Bik	Stl	FG%	3FG%	FT%
	Has Yet to Appear											
Career	GP	GS	MPG	Pts	PPG	RPG	Ast	Bik	Stl	FG%	3FG%	FT%
	Has Yet to Appear											

Season High	Career High
	Pts 1
	Reb 1
	Ast 1
	Stl 1
	Bik 1
	FG 1
	3PT 1
	FT 1

Career Notes

**12 • ANNA LAPPENKÜPER • (AHH-nuh LAH-pen-cooper) • G • Fr. • 5-8 • Herne, Germany • Otto Hahn Gymnasium**

Season	GP	GS	MPG	Pts	PPG	RPG	Ast	Bik	Stl	FG%	3FG%	FT%
	16	11	28.3	93	5.8	2.63	21	2	11	.374	.250	.800
Career	GP	GS	MPG	Pts	PPG	RPG	Ast	Bik	Stl	FG%	3FG%	FT%
	16	11	28.3	93	5.8	2.63	21	2	11	.374	.250	.800

Season High	Career High
13, vs Western Illinois, 12/28/2016	Pts 13, vs Western Illinois, 12/28/2016
5, two times	Reb 5, two times
5, two times	Ast 5, two times
2, three times	Stl 2, three times
1, two times	Bik 1, two times
5, two times	FG 5, two times
3, vs Western Illinois, 12/28/2016	3PT 3, vs Western Illinois, 12/28/2016
7, at Oral Roberts, 12/31/2016	FT 7, at Oral Roberts, 12/31/2016

Career Notes
10-point games 3
5-point games 11
5-rebound games 2
5-assist games 2
3-three's games 1

**13 • De'JOUR YOUNG • (D-zhur) • G • So. • 5-7 • Fort Wayne, Ind. • Concordia Lutheran H.S.**

Season	GP	GS	MPG	Pts	PPG	RPG	Ast	Bik	Stl	FG%	3FG%	FT%
	16	16	29.2	187	11.7	4.69	24	0	14	.441	.220	.898
Career	GP	GS	MPG	Pts	PPG	RPG	Ast	Bik	Stl	FG%	3FG%	FT%
	46	37	25.1	390	8.5	3.96	58	8	47	.424	.283	.785

Season High	Career High
21, vs Oakland, 11/19/2016	Pts 21, vs Oakland, 11/19/2016
9, two times	Reb 10, vs USC Upstate, 11/21/2015
5, at South Dakota State, 1/5/2017	Ast 5, at South Dakota State, 1/5/2017
3, vs Trine, 11/14/2016	Stl 5, vs Grace, 11/16/2015
	Bik 2, two times
7, three times	FG 7, three times
3, vs Oakland, 11/19/2016	3PT 3, vs Oakland, 11/19/2016
8, vs Oakland, 11/19/2016	FT 8, vs Oakland, 11/19/2016

Career Notes
20-point games 1
10-point games 15
10-rebound games 1
5-assist games 1
3-steal games 5
3-three's games 1
5-5-5 games 1

**15 • SELENA LOZADA • (Lo-zaah-Duh) • F • Sr. • 6-2 • Perth Amboy, N.J. • Western Guilford H.S.**

Season	GP	GS	MPG	Pts	PPG	RPG	Ast	Bik	Stl	FG%	3FG%	FT%
	15	11	21.3	82	5.5	4.00	6	11	7	.371	.000	.552
Career	GP	GS	MPG	Pts	PPG	RPG	Ast	Bik	Stl	FG%	3FG%	FT%
	40	17	14.3	142	3.6	2.50	8	15	12	.338	.000	.523

Season High	Career High
12, two times	Pts 13, vs Trine, 11/16/2015
7, vs Eastern Kentucky, 12/21/2016	Reb 7, vs Eastern Kentucky, 12/21/2016
3, vs Eastern Kentucky, 12/21/2016	Ast 3, vs Eastern Kentucky, 12/21/2016
1, five times	Stl 2, two times
3, vs Western Illinois, 12/28/2016	Bik 3, vs Western Illinois, 12/28/2016
6, two times	FG 6, two times
4, at Kent State, 11/30/2016	3PT 7, vs Trine, 11/16/2015
	FT 7, vs Trine, 11/16/2015

Career Notes
10-point games 4
5-point games 13
5-rebound games 9

**21 • ISIS PARKER • F • So. • 6-0 • Cleveland, Ohio • Solon H.S.**

Season	GP	GS	MPG	Pts	PPG	RPG	Ast	Bik	Stl	FG%	3FG%	FT%
	15	1	16.9	56	3.7	2.13	3	4	6	.295	.000	.556
Career	GP	GS	MPG	Pts	PPG	RPG	Ast	Bik	Stl	FG%	3FG%	FT%
	40	2	11.8	98	2.5	1.68	3	7	11	.315	.000	.645

Season High	Career High
9, two times	Pts 9, four times
5, three times	Reb 6, at Northern Kentucky, 12/5/2015
2, vs Miami (Ohio), 12/19/2016	Ast 2, vs Miami (Ohio), 12/19/2016
2, two times	Stl 2, two times
1, three times	Bik 1, six times
4, at UIC, 12/10/2016	FG 4, two times
	3PT 7, at Northern Kentucky, 12/5/2015
3, at Butler, 11/16/2016	FT 7, at Northern Kentucky, 12/5/2015

Career Notes
5-point games 11
5-rebound games 5

**22 • ZARIA ATKINS • G • Fr. • 5-7 • Dudley, N.C. • Southern Wayne H.S.**

Season	GP	GS	MPG	Pts	PPG	RPG	Ast	Bik	Stl	FG%	3FG%	FT%
	16	10	25.6	133	8.3	2.38	25	0	14	.362	.321	.873
Career	GP	GS	MPG	Pts	PPG	RPG	Ast	Bik	Stl	FG%	3FG%	FT%
	16	10	25.6	133	8.3	2.38	25	0	14	.362	.321	.873

Season High	Career High
18, vs Eastern Kentucky, 12/21/2016	Pts 18, vs Eastern Kentucky, 12/21/2016
7, vs Miami (Ohio), 12/19/2016	Reb 7, vs Miami (Ohio), 12/19/2016
5, at South Dakota State, 1/5/2017	Ast 5, at South Dakota State, 1/5/2017
3, vs Defiance, 11/12/2016	Stl 3, vs Defiance, 11/12/2016
	Bik 5, three times
5, three times	FG 5, three times
2, three times	3PT 2, three times
9, vs Eastern Kentucky, 12/21/2016	FT 9, vs Eastern Kentucky, 12/21/2016

Career Notes
10-point games 6
5-point games 13
5-rebound games 3
5-assist games 1
3-steal games 1

**23 • PEYTON FALLIS • (Fau-liss) • G • So. • 5-10 • Indianapolis, Ind. • Heritage Christian H.S.**

Season	GP	GS	MPG	Pts	PPG	RPG	Ast	Bik	Stl	FG%	3FG%	FT%
	10	1	21.4	55	5.5	2.00	9	1	6	.299	.208	.769
Career	GP	GS	MPG	Pts	PPG	RPG	Ast	Bik	Stl	FG%	3FG%	FT%
	38	2	16.4	153	4.0	1.97	32	3	29	.261	.205	.660

Season High	Career High
22, at Butler, 11/16/2016	Pts 22, at Butler, 11/16/2016
5, at Western Michigan, 12/6/2016	Reb 5, three times
2, three times	Ast 3, two times
2, vs Trine, 11/14/2016	Stl 3, two times
1, vs Western Illinois, 12/28/2016	Bik 1, three times
7, at Butler, 11/16/2016	FG 7, at Butler, 11/16/2016
4, at Butler, 11/16/2016	3PT 4, at Butler, 11/16/2016
5, at Illinois, 12/2/2016	FT 5, at Illinois, 12/2/2016

Career Notes
20-point games 1
10-point games 4
5-point games 15
5-rebound games 3
3-steal games 1
3-three's games 3
Games with a 3 10

**31 • RACHEL RINEHART • G • Sr. • 5-8 • Angola, Ind. • Angola H.S.**

Season	GP	GS	MPG	Pts	PPG	RPG	Ast	Bik	Stl	FG%	3FG%	FT%
	16	15	25.5	120	7.5	3.75	41	0	26	.464	.250	.800
Career	GP	GS	MPG	Pts	PPG	RPG	Ast	Bik	Stl	FG%	3FG%	FT%
	106	67	22.2	736	6.9	3.25	244	8	137	.408	.293	.704

Season High	Career High
16, at UIC, 12/10/2016	Pts 31, vs Western Illinois, 12/2/2016
10, at Illinois, 12/2/2016	Reb 10, at Illinois, 12/2/2016
6, vs Trine, 11/14/2016	Ast 8, two times
5, vs Western Illinois, 12/28/2016	Stl 6, at Milwaukee, 12/28/2015
	Bik 2, at Oral Roberts, 2/28/2014
6, at South Dakota State, 1/5/2017	FG 12, vs Western Illinois, 12/2/2016
2, vs Eastern Kentucky, 12/21/2016	3PT 3, two times
8, at UIC, 12/10/2016	FT 8, three times

Career Notes
30-point games 1
20-point games 4
10-point games 31
5-assist games 16
3-steal games 12
5-5-5 games 6
3-three's games 2

**32 • LINDLEY KISTLER • F • Fr. • 6-0 • Fort Wayne, Ind. • Homestead H.S.**

Season	GP	GS	MPG	Pts	PPG	RPG	Ast	Bik	Stl	FG%	3FG%	FT%
	6	0	10.7	30	5.0	3.00	1	4	3	.474	.417	.700
Career	GP	GS	MPG	Pts	PPG	RPG	Ast	Bik	Stl	FG%	3FG%	FT%
	6	0	10.7	30	5.0	3.00	1	4	3	.474	.417	.700

Season High	Career High
14, vs Defiance, 11/12/2016	Pts 14, vs Defiance, 11/12/2016
6, vs Trine, 11/14/2016	Reb 6, vs Trine, 11/14/2016
1, vs Belmont, 11/11/2016	Ast 1, vs Belmont, 11/11/2016
1, three times	Stl 1, three times
2, two times	Bik 2, two times
5, vs Defiance, 11/12/2016	FG 5, vs Defiance, 11/12/2016
3, vs Defiance, 11/12/2016	3PT 3, vs Defiance, 11/12/2016
4, vs Trine, 11/14/2016	FT 4, vs Trine, 11/14/2016

Career Notes
10-point games 1
5-point games 3
5-rebound games 1
3-three's games 1
Games with a 3 3



NIECEE (KNEE-see) NELSON
Head Coach - 1st Year
Concordia Portland '02



TY SHAW
Assistant Coach
Albertson '02



MARCIE ALBERTS
Assistant Coach
Ohio State '97



CAROL DUNCAN
Assistant Coach
Purdue '06



HALEY SEIBERT
GA Coach
IPFW '15